

Hootie Patootie

by Jeremiah Ketner





Style #HPAT

Pattern #5301 PA

Reduced; block approx. 36" x 42"; 10 yards = 10 panels



Style #HPAT

Pattern #5302 PA

Reduced; rotated; blocks approx. 10 1/2" x 12" with 1/8" white border; 10 yards = 15 panels



Style #HPAT
Pattern #5303 DB
Reduced



Style #HPAT
Pattern #5303 DB
100%



Style #HPAT
Pattern #5303 P
100%



Style #HPAT
Pattern #5305 N
100%



Style #HPAT
Pattern #5305 W
100%



Style #HPAT
Pattern #5306 BC
100%



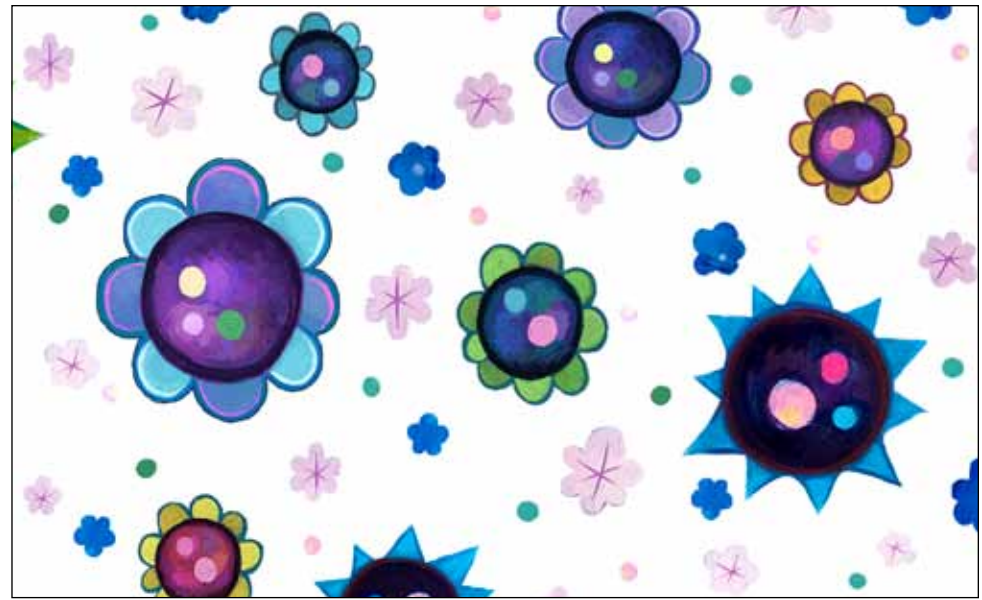
Style #HPAT
Pattern #5306 F
100%



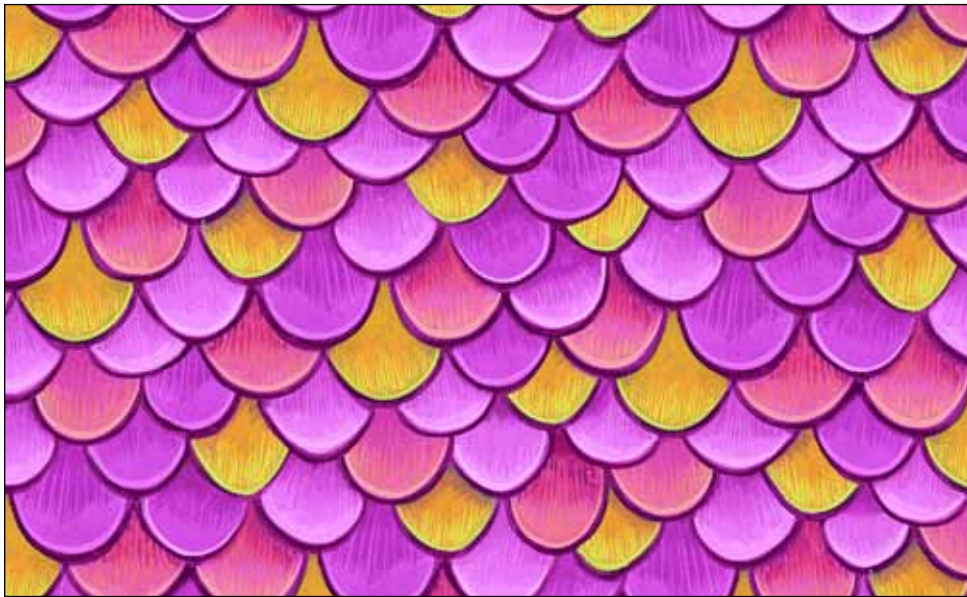
Style #HPAT
Pattern #5306 LC
100%



Style #HPAT
Pattern #5304 C
100%



Style #HPAT
Pattern #5304 W
100%



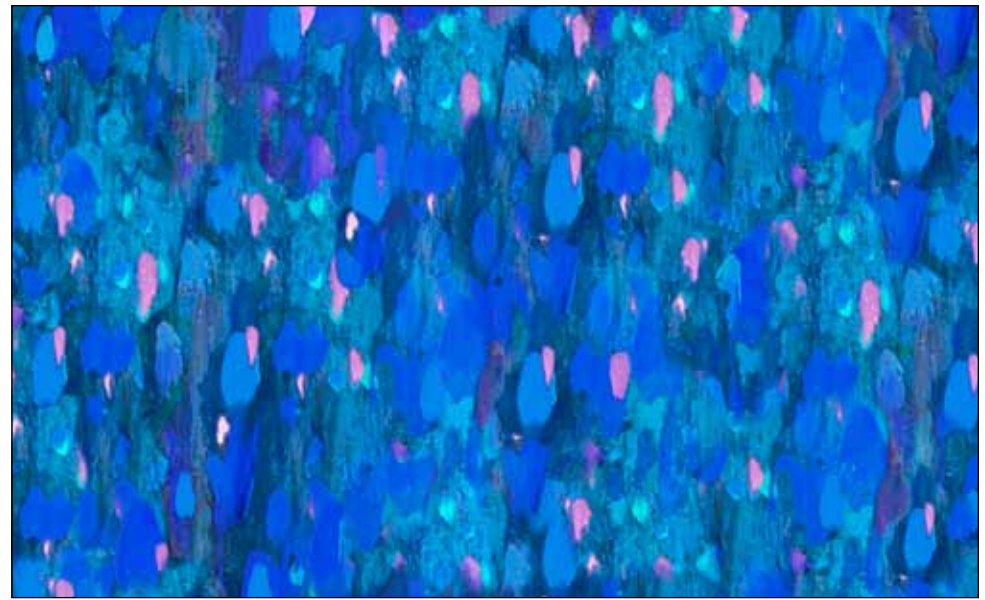
Style #HPAT
Pattern #5307 P
100%



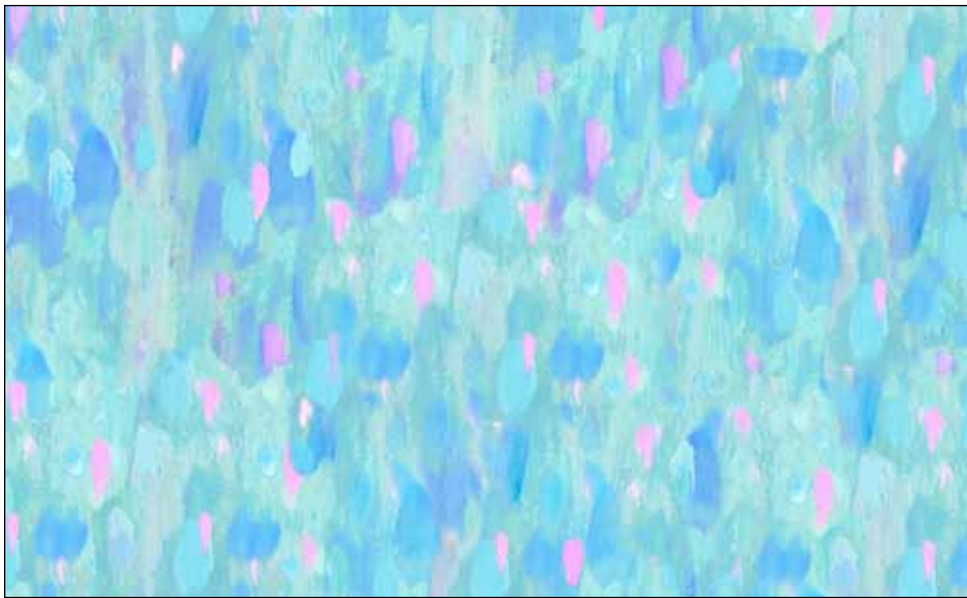
Style #HPAT
Pattern #5308 C
100%



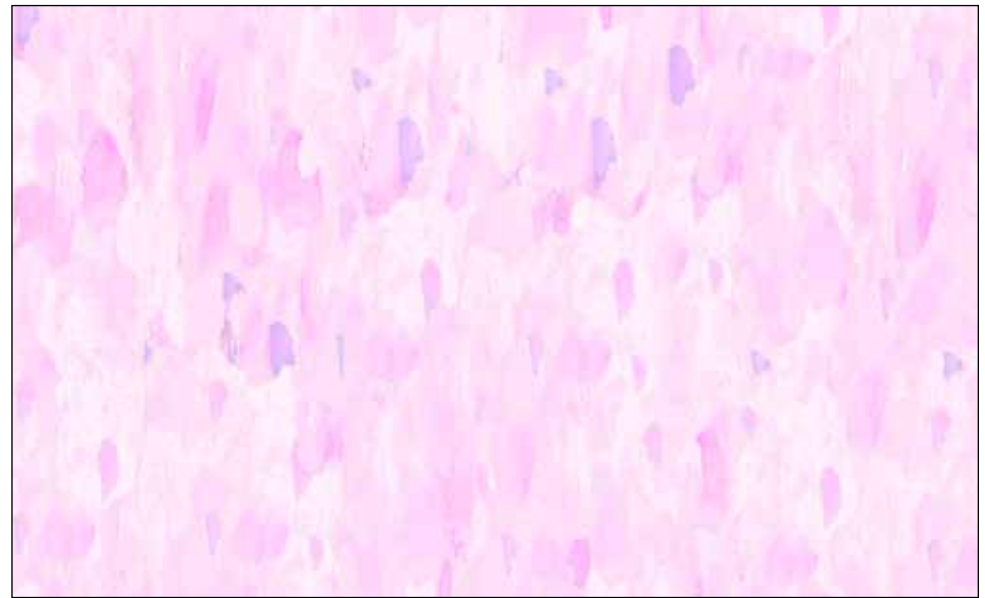
Style #HPAT
Pattern #5309 C
100%



Style #HPAT
Pattern #5309 DB
100%



Style #HPAT
Pattern #5309 LBG
100%



Style #HPAT
Pattern #5309 P
100%

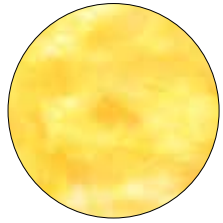


Style #HPAT
Pattern #5310 N 108"
100%

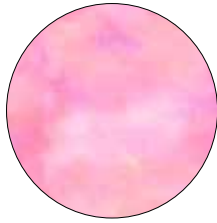


Style #HPAT
Pattern #5310 W 108"
100%

BLENDER SUGGESTIONS:



CSTO 5226 Y



CSTO 5226 P



CSTO 5226 CC



CSTO 5226 VC



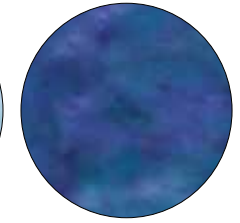
CSTO 5226 V



CSTO 5226 V V



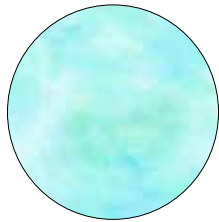
CSTO 5226 LB



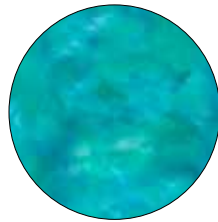
CSTO 5226 DB



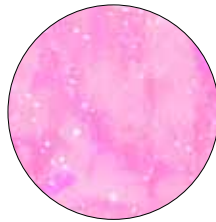
CSTO 5226 N



CSTO 5226 LBG



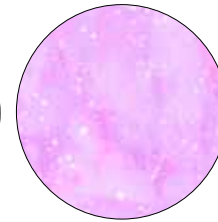
CSTO 5226 BG



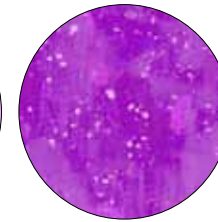
COSM 5130 P



COSM 5130 F



COSM 5130 LC



COSM 5130 C



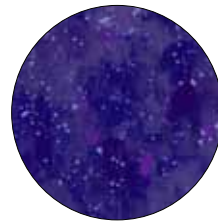
COSM 5130 CC



COSM 5130 LV



COSM 5130 V



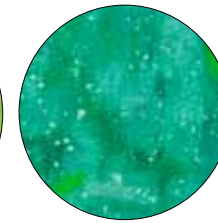
COSM 5130 V V



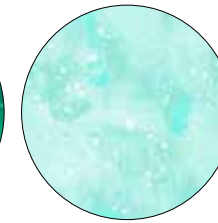
COSM 5130 DB



COSM 5130 A



COSM 5130 DG



COSM 5130 LT



COSM 5130 T



100% cotton ♦ Cold wash & dry ♦ 44"/45" ♦ Colors may vary due to printing process

Not Intended for Children's Sleepwear





Quilt size approximately: 54" x 44"

Quilt design by Stacey Day

Pattern available at:
www.pbtex.com when the fabric ships.

FABRIC REQUIREMENTS*

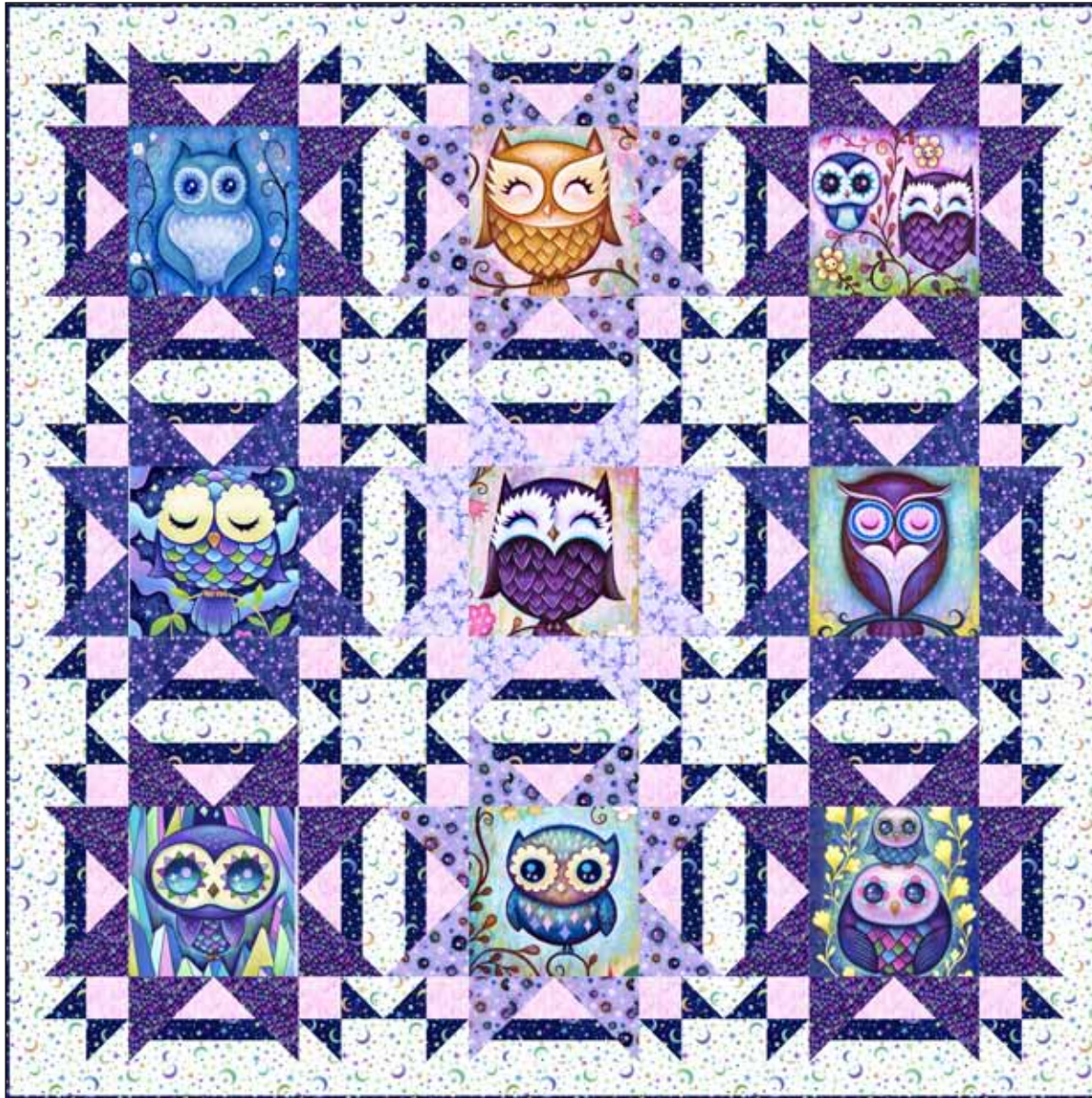
HPAT 5301 PA.....	1 panel	HPAT 5306 LC.....	1/4 yard
HPAT 5303 DB.....	1/8 yard	HPAT 5308 C.....	5/8 yard
HPAT 5303 P.....	1/4 yard	HPAT 5309 C.....	1/4 yard
HPAT 5304 C.....	1/4 yard	HPAT 5309 DB.....	1/4 yard
HPAT 5304 W.....	3/8 yard	HPAT 5309 P.....	1/4 yard
HPAT 5305 N.....	1/4 yard		
HPAT 5305 W.....	3/4 yard	Total yardage.....	4 7/8 yards
HPAT 5306 BC.....	1/4 yard		

*These yardages are estimates ONLY and may change on the pattern when it becomes available.

Kit Chart

Fabric (based on 15 yard bolts)	12	18	24
HPAT 5301 PA*	2	2	3
HPAT 5303 DB	1	1	1
HPAT 5303 P	1	1	1
HPAT 5304 C	1	1	1
HPAT 5304 W	1	1	1
HPAT 5305 N	1	1	1
HPAT 5305 W	1	1	2
HPAT 5306 BC	1	1	1
HPAT 5306 LC	1	1	1
HPAT 5308 C	1	1	2
HPAT 5309 C	1	1	1
HPAT 5309 DB	1	1	1
HPAT 5309 P	1	1	1

(*10 yards = 10 panels)



Quilt size approximately: 64" x 64"

Quilt design by Stacey Day

Pattern available at:
www.pbtext.com when the fabric ships.

FABRIC REQUIREMENTS*

HPAT 5301 PA..... 1 panel
 HPAT 5302 PA..... 1 panel
 HPAT 5304 C 3/8 yard
 HPAT 5305 N 2 yards
 HPAT 5305 W 1 3/4 yards
 HPAT 5306 BC 3/8 yard
 HPAT 5306 LC..... 3/8 yard
 HPAT 5308 C 5/8 yard
 HPAT 5309 C 1/4 yard

Total yardage 7 yards

**These yardages are estimates ONLY and may change on the pattern when it becomes available.*

Kit Chart

Fabric (based on 15 yard bolts)	12	18	24
HPAT 5301 PA*	2	3	4
HPAT 5302 PA**	1	2	2
HPAT 5304 C	1	1	1
HPAT 5305 N	2	3	4
HPAT 5305 W	2	3	3
HPAT 5306 BC	1	1	1
HPAT 5306 LC	1	1	1
HPAT 5308 C	1	1	2
HPAT 5309 C	1	1	1

* 10 yards = 10 panels

** 10 yards = 15 panels