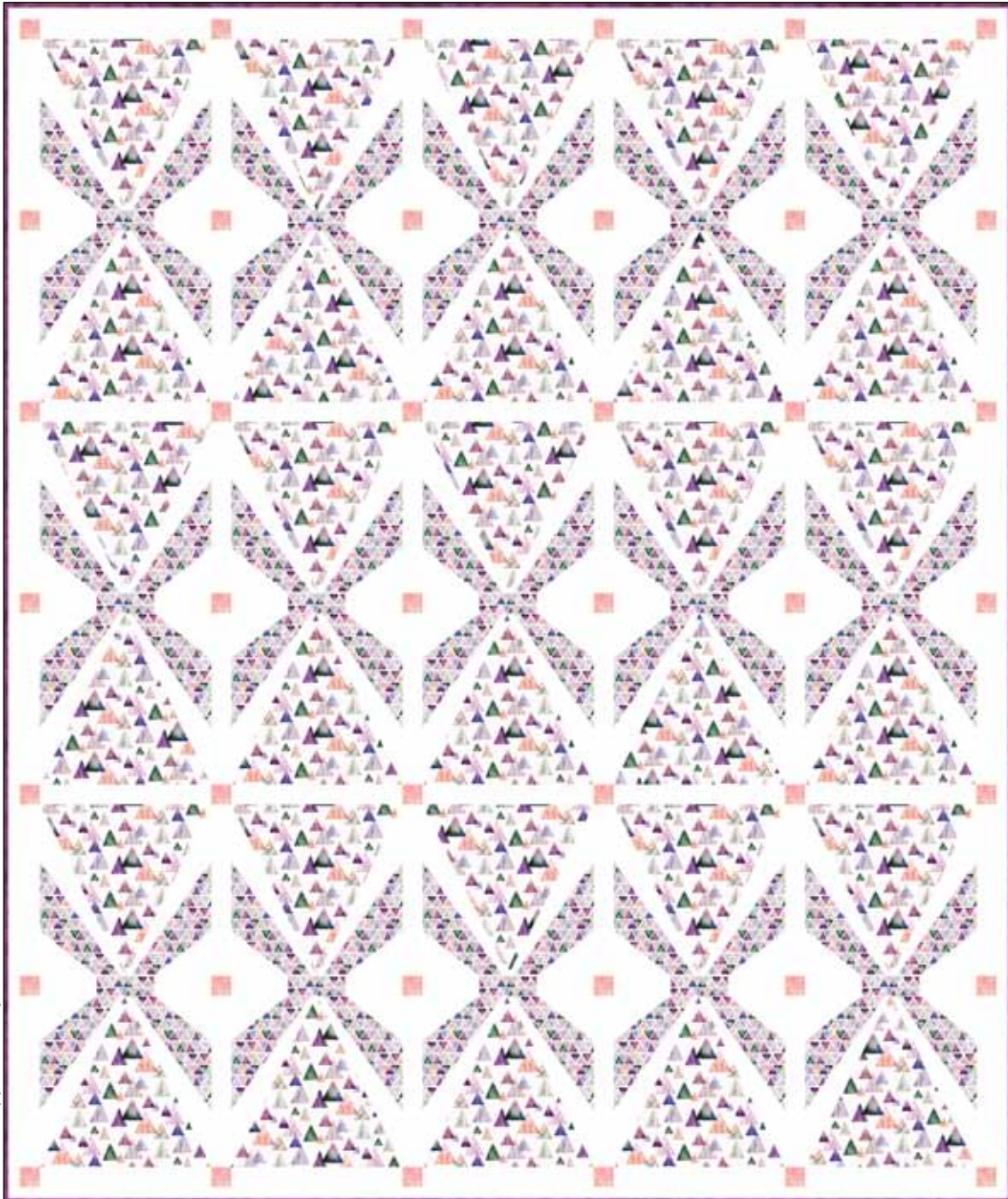


Gemstones

Quilt Design by Cyndi Hershey



Quilt size: approximately 88 1/2" x 105 1/4"



Featuring fabrics from
Gemstones by Stephanie Ryan

P&B Textiles • pbtex.com • 800-351-9087 • 208 Clock Tower Square, Portsmouth, RI 02871

Gemstones

Fabric collection by Stephanie Ryan

Quilt designed by Cyndi Hershey

Skill level: Confident Beginner • Finished Quilt Size: approximately 88 1/2" x 105 1/4"

Quilt Yardages:

Fabric A: GEMS 5221 MU	4 yards
Fabric B: GEMS 5224 MU	3 1/2 yards
Fabric C: CSTO 5226 C	1 yard
Fabric D: CSTO 5226 LJ	1/4 yard
Fabric E: RA11 774 W	6 1/2 yards
Backing: FWID 5113 P 108 "suggested	3 1/2 yards
Batting	97" x 113"

Additional supplies: template plastic, freezer paper or other material to make templates.

Cutting Instructions:

All strips are cut across the width of the fabric (perpendicular to selvages) unless noted otherwise. All seams are 1/4". Prepare templates using the masters that are provided. Use your preferred template method for cutting fabric pieces. I generally cut freezer paper templates. Then, layer fabric strips and lightly iron the template to the top strip. Pin through the layers. Align a ruler with the outer edges and use a rotary cutter to cut through the layers. You can also use a good, sharp pair of scissors to cut through the layers.

Note: You may find it helpful to make one "test" unit before you begin on the quilt blocks. Doing so can help give you understanding of the construction process.

From Fabric A:

1. Cut eight 15 7/8" strips. Use Template 1 to cut four triangles per strip by rotating the template across the strip. (Block Center)

From Fabric B:

1. Cut three 2 1/4" strips; subcut fifteen 2 1/4" x 5 1/2" rectangles. (Sashing)
2. Cut ten 11" strips; subcut thirty 11" squares. Use Template 3 to cut two shapes per square by rotating template to nest shapes together. Cut thirty shapes and thirty reverse shapes. (Blocks)

From Fabric C:

1. Cut eleven 2 1/2" strips. (Binding)

From Fabric D:

1. Cut three 2 1/4" strips; subcut forty-two 2 1/4" squares. (Sashing Squares)

From Fabric E:

1. Cut five 2 1/4" strips; subcut thirty 2 1/4" x 5 1/2" rectangles. (Sashing)
2. Cut ten 2" strips. Sew strips together end to end with diagonal seams. Trim seams and press open. From this pieced strip, cut two 2" x 89" strips and two 2" x 102 3/4" strips. (Border)
3. Cut thirty 3" strips. Use Template 2 to cut 30 and 30 reverse shapes. You can cut two shapes per strip. (Blocks)

4. Cut five 4 3/4" strips; subcut thirty 4 3/4" x 6" rectangles. Cut fifteen rectangles in half diagonally. Cut remaining fifteen rectangles in the opposite direction. This will yield thirty and thirty reverse triangles. (Blocks)
5. Cut four 15 1/2" strips; subcut fifty-six 2 1/4" x 15 1/2" rectangles. (Sashing)

Piecing Instructions:

1. Sew one Fabric E/Template 2 shape to both sides of one Fabric A/Template 1 triangle, matching seam points. Press seams open or toward E.
2. Sew one Fabric B/Template 3 shape to both sides of the Step 1 unit, matching seam points. Press seams open or toward B.
3. Sew one E triangle to the top left of the block and one reverse triangle to the top right of the block. Press seams open or toward E.
4. Repeat Steps 1-3 to make thirty blocks. *Note that Fabric A will be automatically reversed in half of the blocks, as shown.* Blocks measure 15 1/2" unfinished. (Figure 1)

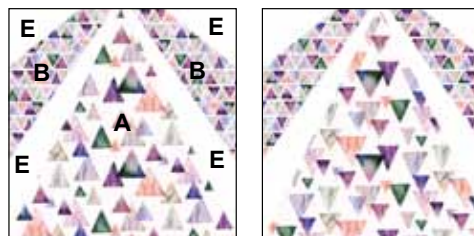


Figure 1
Make 15
of each.
15 1/2" sq.
unfinished.

5. Sew one 2 1/4" x 5 1/2" E rectangle to both sides of one 2 1/4" x 5 1/2" B rectangle. Press seams open or toward E. Repeat to make fifteen units. (Figure 2)



Figure 2 Make 15.

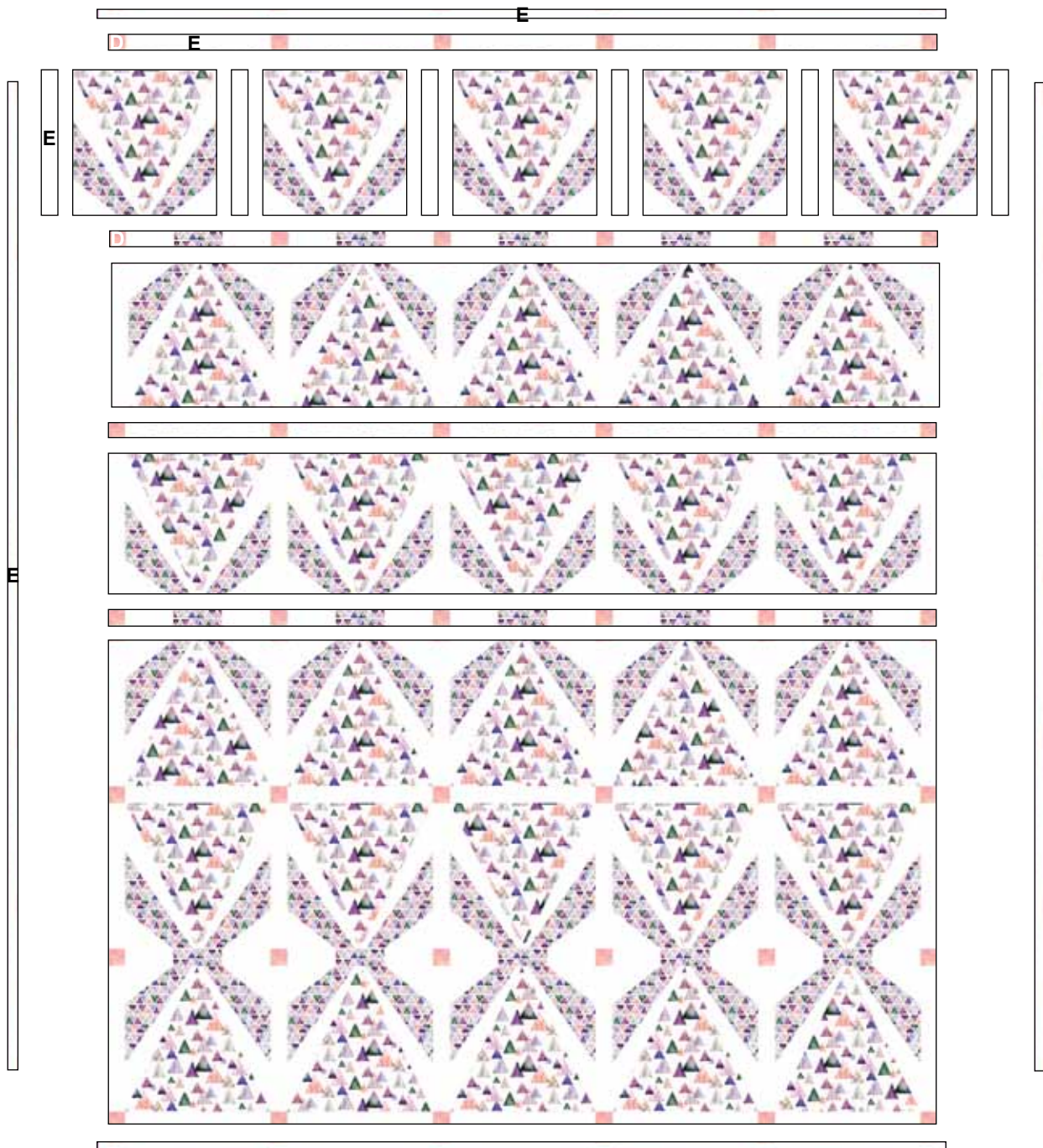
6. Sew five Step 6 sashing units alternately together with six 2 1/4" D squares. Press toward the sashing units. Repeat to make three pieced sashing rows.
7. Sew five 2 1/4" x 15 1/2" E strips alternately together with six 2 1/4" D squares. Press toward the sashing units. Repeat to make four sashing rows.
8. Refer to Quilt Diagram to lay blocks, 2 14" x 15 1/2" E strips, pieced sashing rows, and solid sashing rows into place.
9. Sew five blocks alternately together with six E sashing strips to make six block rows. Press toward the E sashing strips.
10. Sew block rows alternately together with solid and pieced sashing rows. Press toward the sashing rows.

- Sew one 2" x 102 3/4" E strip to both sides of the Quilt Center. Sew one 2" x 89" E strip to the top and bottom of the Quilt Center. Press toward E.

- Quilt as desired.
- Trim layers even with quilt top, squaring corners.
- Join eleven 2 1/2" C binding strips with diagonal seams. Press seams open. Attach binding using your favorite method.
- Make a label and sew to the back of the quilt.

Finishing:

- Press 108" backing fabric and trim to 97" x 113".
- Layer quilt, batting, and backing. Baste layers together.

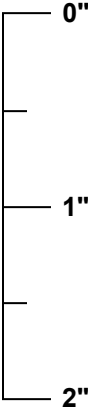


Quilt Diagram

**Template 1
Part A
100%**

Join with Template 1 Part B

Join with Template 1 Part C

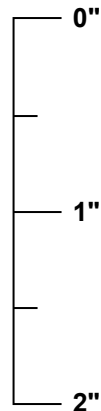


Scale Check for pdf files. When you print these templates, this ruler should measure 2 inches long. If it does not, change, "page scaling" to "none" in the print dialog box.

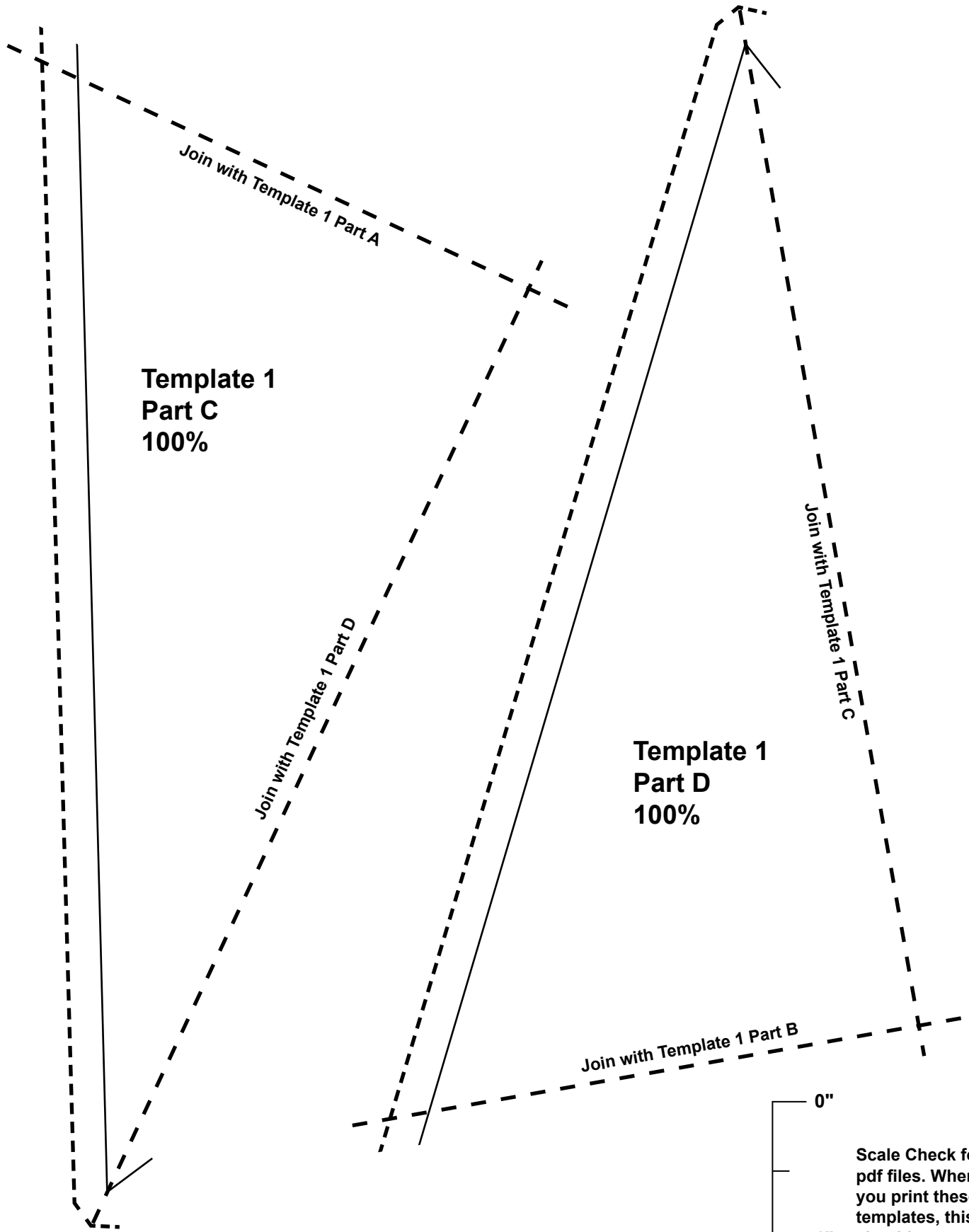
**Template 1
Part B
100%**

Join with Template 1 Part A

Join with Template 1 Part D

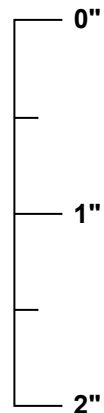


Scale Check for pdf files. When you print these templates, this ruler should measure 2 inches long. If it does not, change, "page scaling" to "none" in the print dialog box.

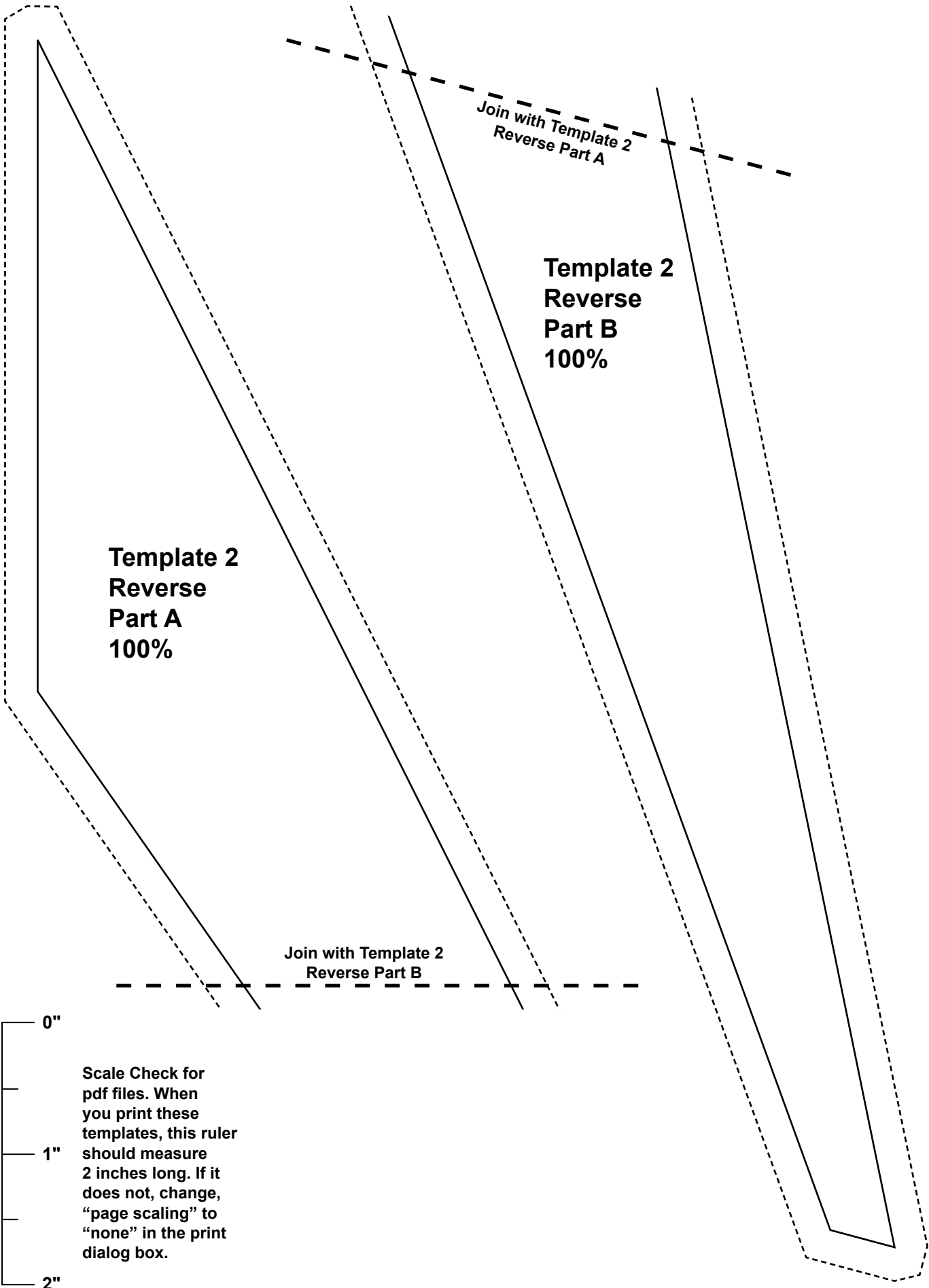


**Template 1
Part C
100%**

**Template 1
Part D
100%**



Scale Check for pdf files. When you print these templates, this ruler should measure 2 inches long. If it does not, change, "page scaling" to "none" in the print dialog box.

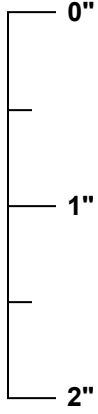


**Template 2
Reverse
Part A
100%**

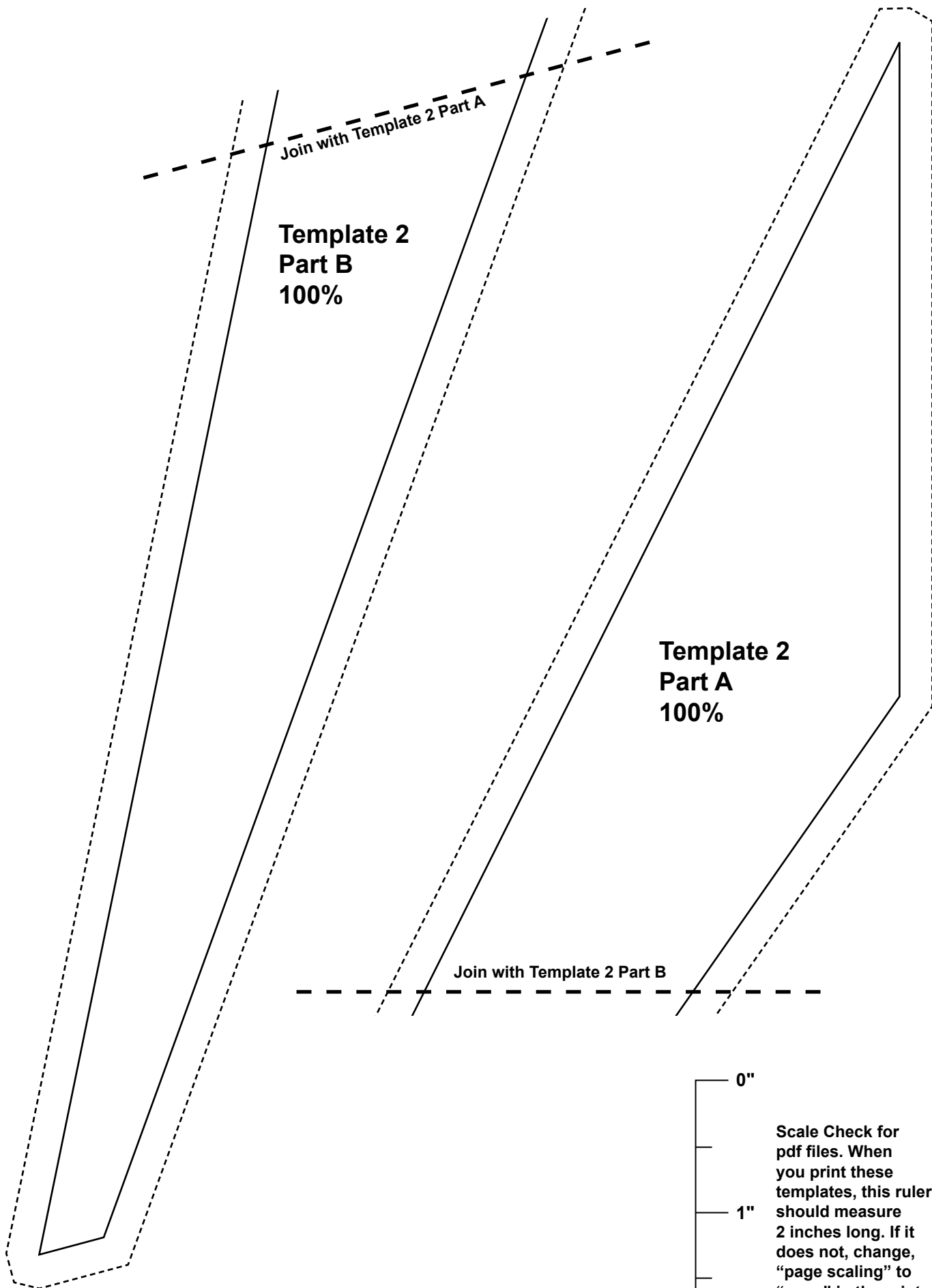
**Template 2
Reverse
Part B
100%**

*Join with Template 2
Reverse Part A*

*Join with Template 2
Reverse Part B*



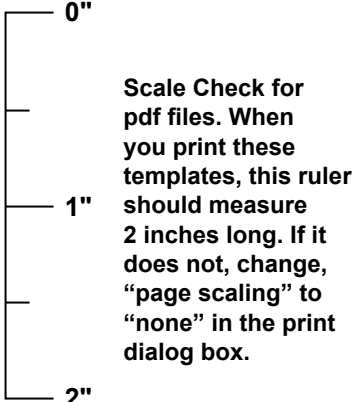
**Scale Check for
pdf files. When
you print these
templates, this ruler
should measure
2 inches long. If it
does not, change,
“page scaling” to
“none” in the print
dialog box.**

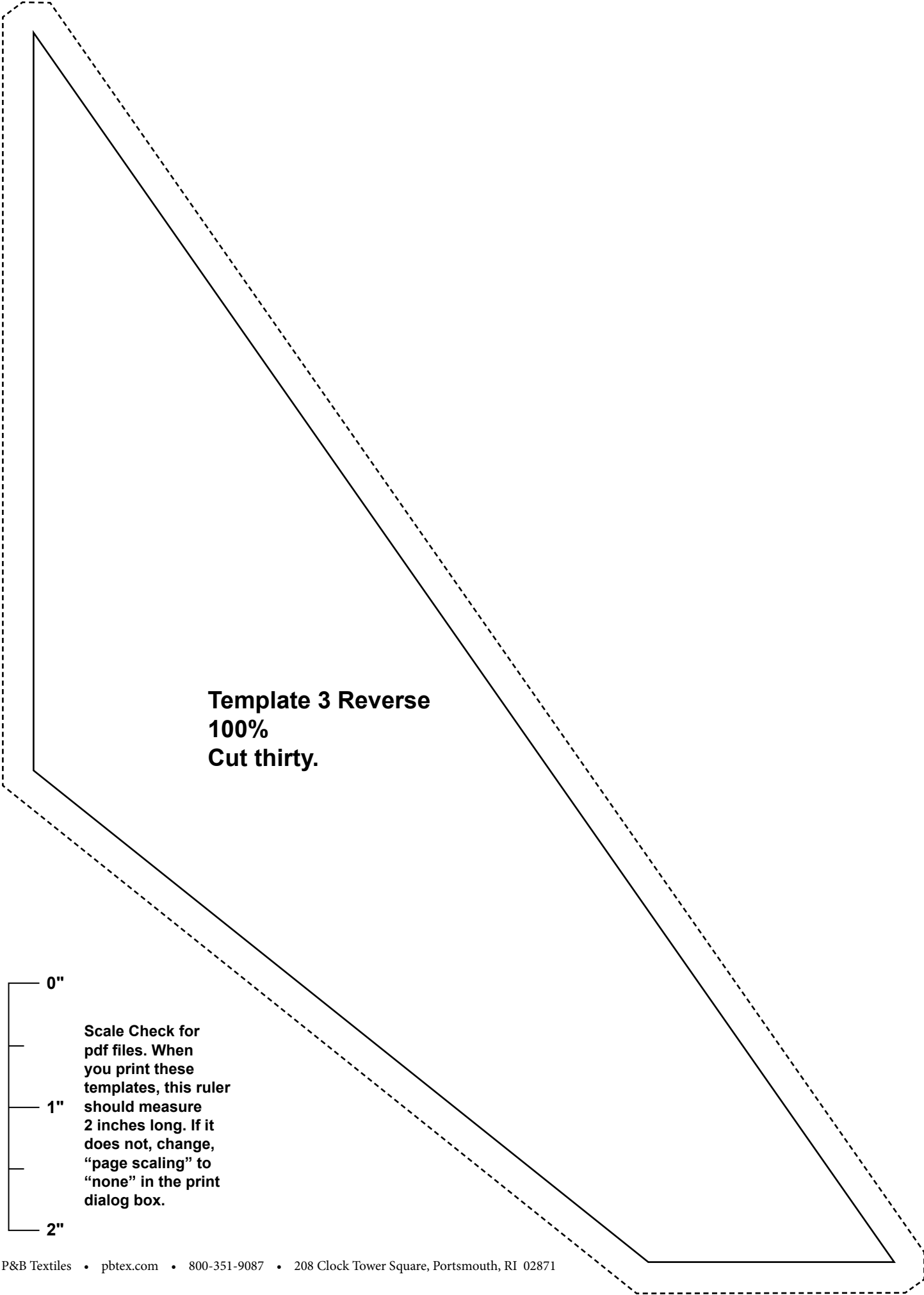


**Template 2
Part B
100%**

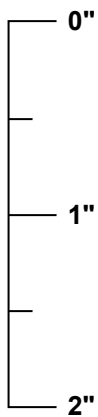
**Template 2
Part A
100%**

Join with Template 2 Part B



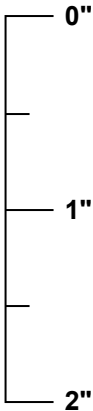


**Template 3 Reverse
100%
Cut thirty.**



**Scale Check for
pdf files. When
you print these
templates, this ruler
should measure
2 inches long. If it
does not, change,
"page scaling" to
"none" in the print
dialog box.**

Template 3
100%
Cut thirty.



Scale Check for pdf files. When you print these templates, this ruler should measure 2 inches long. If it does not, change, "page scaling" to "none" in the print dialog box.

Gemstones

Fabric Collection by Stephanie Ryan



GEMS 5219 BG



GEMS 5219 MU



GEMS 5220 BG



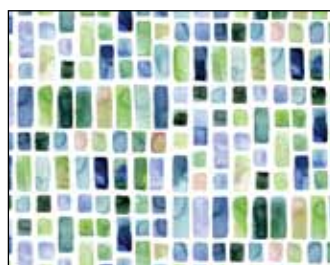
GEMS 5220 MU



GEMS 5221 BG



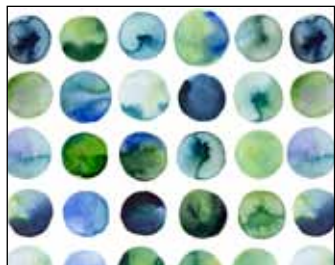
GEMS 5221 MU*



GEMS 5222 BG



GEMS 5222 MU



GEMS 5223 BG



GEMS 5223 MU



GEMS 5224 BG



GEMS 5224 MU*



GEMS 5225 BG



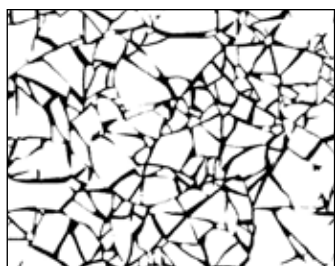
GEMS 5225 MU



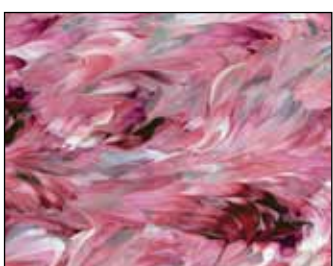
CTSO 5226 C*



CTSO 5226 LJ*



RA11 774 W*



FWID 5113 P†



BOUTIQUE

P&B Textiles • pbtex.com • 800-351-9087 • 208 Clock Tower Square, Portsmouth, RI 02871

*Fabrics used in quilt.

†Backing