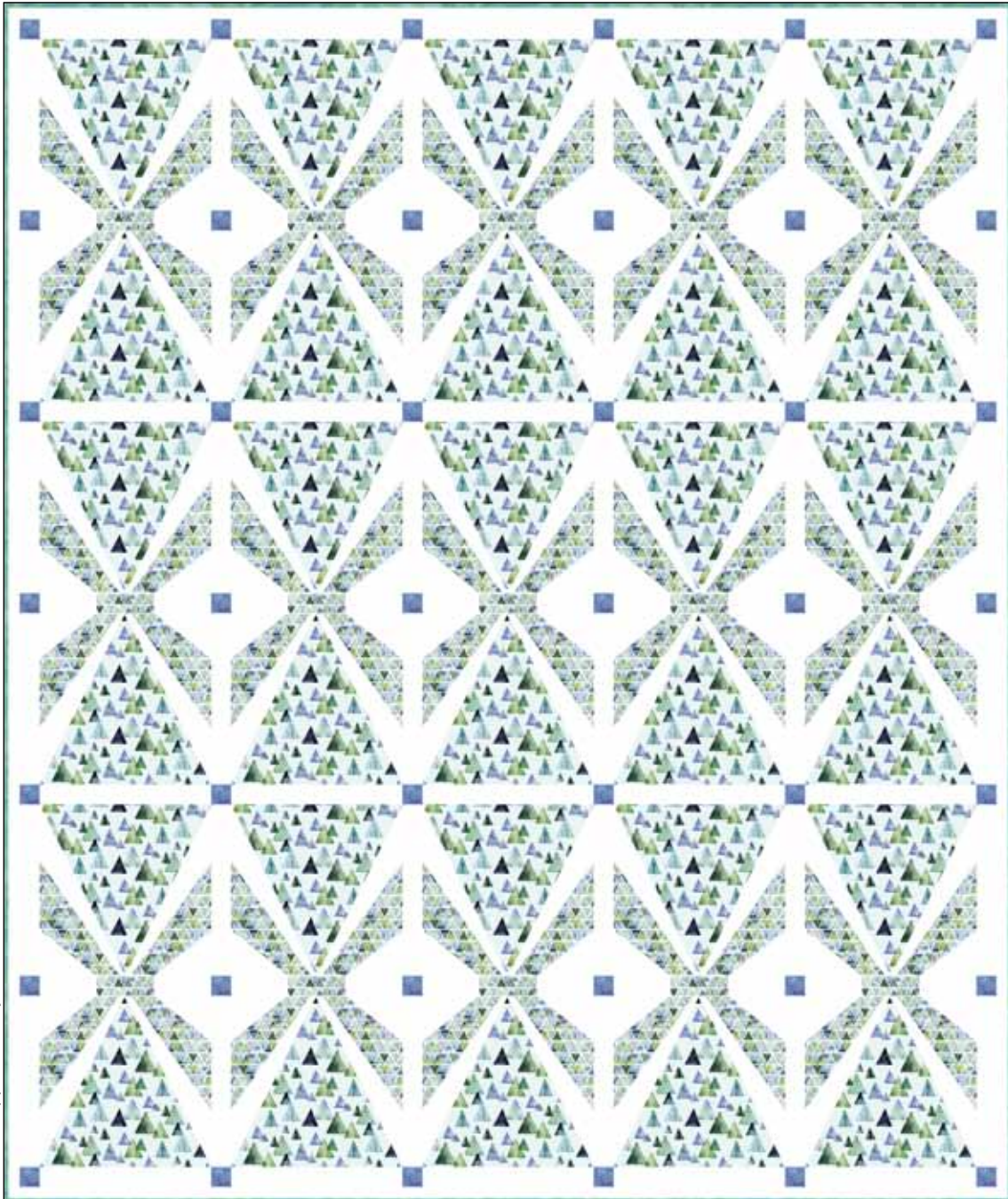


# Gemstones

Quilt Design by Cyndi Hershey



Quilt size: approximately 88 1/2" x 105 1/4"



Featuring fabrics from  
*Gemstones* by Stephanie Ryan

P&B Textiles • pbtex.com • 800-351-9087 • 208 Clock Tower Square, Portsmouth, RI 02871

# Gemstones

Fabric collection by Stephanie Ryan

Quilt designed by Cyndi Hershey

Skill level: Confident Beginner • Finished Quilt Size: approximately 88 1/2" x 105 1/4"

## Quilt Yardages:

Fabric A: <b>GEMS 5221 BG</b> .....	4 yards
Fabric B: <b>GEMS 5224 BG</b> .....	3 1/2 yards
Fabric C: <b>CSTO 5226 T</b> .....	1 yard
Fabric D: <b>CSTO 5226 B</b> .....	1/4 yard
Fabric E: <b>RA11 774 W</b> .....	6 1/2 yards
Backing: <b>FWID 5113 BT 108"</b> suggested.....	3 1/2 yards
Batting .....	97" x 113"

Additional supplies: template plastic, freezer paper or other material to make templates.

## Cutting Instructions:

All strips are cut across the width of the fabric (perpendicular to selvages) unless noted otherwise. All seams are 1/4". Prepare templates using the masters that are provided. Use your preferred template method for cutting fabric pieces. I generally cut freezer paper templates. Then, layer fabric strips and lightly iron the template to the top strip. Pin through the layers. Align a ruler with the outer edges and use a rotary cutter to cut through the layers. You can also use a good, sharp pair of scissors to cut through the layers.

**Note:** You may find it helpful to make one "test" unit before you begin on the quilt blocks. Doing so can help give you understanding of the construction process.

### From Fabric A:

1. Cut eight 15 7/8" strips. Use Template 1 to cut four triangles per strip by rotating the template across the strip. (Block Center)

### From Fabric B:

1. Cut three 2 1/4" strips; subcut fifteen 2 1/4" x 5 1/2" rectangles. (Sashing)
2. Cut ten 11" strips; subcut thirty 11" squares. Use Template 3 to cut two shapes per square by rotating template to nest shapes together. Cut thirty shapes and thirty reverse shapes. (Blocks)

### From Fabric C:

1. Cut eleven 2 1/2" strips. (Binding)

### From Fabric D:

1. Cut three 2 1/4" strips; subcut forty-two 2 1/4" squares. (Sashing Squares)

### From Fabric E:

1. Cut five 2 1/4" strips; subcut thirty 2 1/4" x 5 1/2" rectangles. (Sashing)
2. Cut ten 2" strips. Sew strips together end to end with diagonal seams. Trim seams and press open. From this pieced strip, cut two 2" x 89" strips and two 2" x 102 3/4" strips. (Border)
3. Cut thirty 3" strips. Use Template 2 to cut 30 and 30 reverse shapes. You can cut two shapes per strip. (Blocks)

4. Cut five 4 3/4" strips; subcut thirty 4 3/4" x 6" rectangles. Cut fifteen rectangles in half diagonally. Cut remaining fifteen rectangles in the opposite direction. This will yield thirty and thirty reverse triangles. (Blocks)
5. Cut four 15 1/2" strips; subcut fifty-six 2 1/4" x 15 1/2" rectangles. (Sashing)

## Piecing Instructions:

1. Sew one Fabric E/Template 2 shape to both sides of one Fabric A/Template 1 triangle, matching seam points. Press seams open or toward E.
2. Sew one Fabric B/Template 3 shape to both sides of the Step 1 unit, matching seam points. Press seams open or toward B.
3. Sew one E triangle to the top left of the block and one reverse triangle to the top right of the block. Press seams open or toward E.
4. Repeat Steps 1-3 to make thirty blocks. *Note that Fabric A will be automatically reversed in half of the blocks, as shown.* Blocks measure 15 1/2" unfinished. (Figure 1)

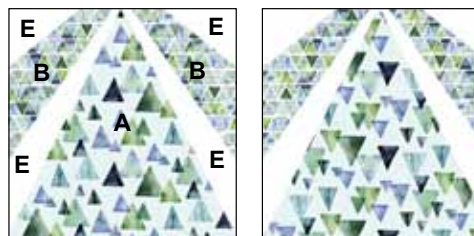


Figure 1  
Make 15  
of each.  
15 1/2" sq.  
unfinished.

5. Sew one 2 1/4" x 5 1/2" E rectangle to both sides of one 2 1/4" x 5 1/2" B rectangle. Press seams open or toward E. Repeat to make fifteen units. (Figure 2)



Figure 2 Make 15.

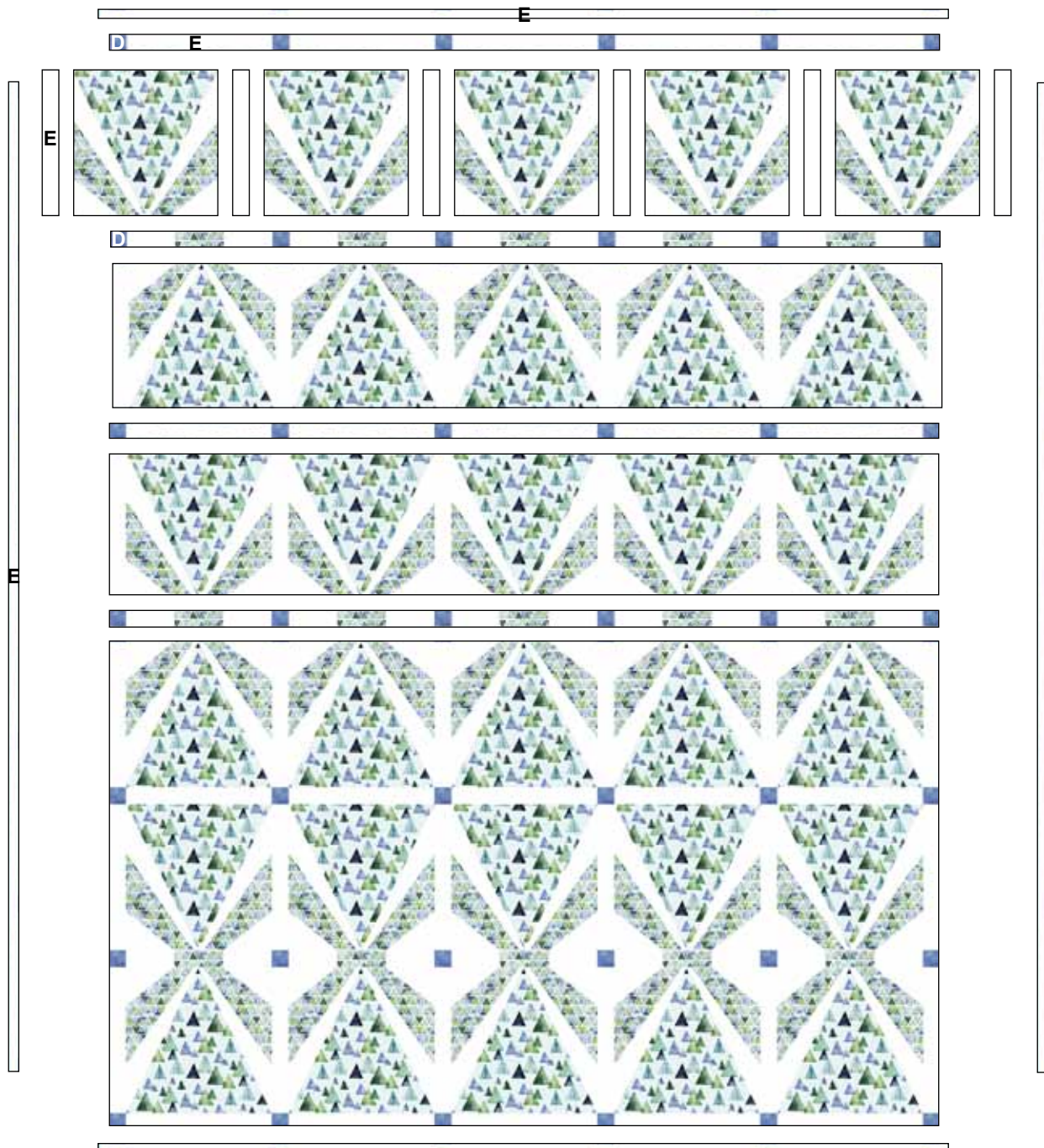
6. Sew five Step 6 sashing units alternately together with six 2 1/4" D squares. Press toward the sashing units. Repeat to make three pieced sashing rows.
7. Sew five 2 1/4" x 15 1/2" E strips alternately together with six 2 1/4" D squares. Press toward the sashing units. Repeat to make four sashing rows.
8. Refer to Quilt Diagram to lay blocks, 2 1/4" x 15 1/2" E strips, pieced sashing rows, and solid sashing rows into place.
9. Sew five blocks alternately together with six E sashing strips to make six block rows. Press toward the E sashing strips.
10. Sew block rows alternately together with solid and pieced sashing rows. Press toward the sashing rows.

- Sew one 2" x 102 3/4" E strip to both sides of the Quilt Center. Sew one 2" x 89" E strip to the top and bottom of the Quilt Center. Press toward E.

- Quilt as desired.
- Trim layers even with quilt top, squaring corners.
- Join eleven 2 1/2" C binding strips with diagonal seams. Press seams open. Attach binding using your favorite method.
- Make a label and sew to the back of the quilt.

### *Finishing:*

- Press 108" backing fabric and trim to 97" x 113".
- Layer quilt, batting, and backing. Baste layers together.

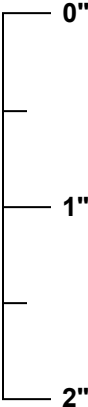


*Quilt Diagram*

**Template 1  
Part A  
100%**

Join with Template 1 Part B

Join with Template 1 Part C

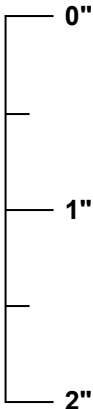


**Scale Check for pdf files. When you print these templates, this ruler should measure 2 inches long. If it does not, change, "page scaling" to "none" in the print dialog box.**

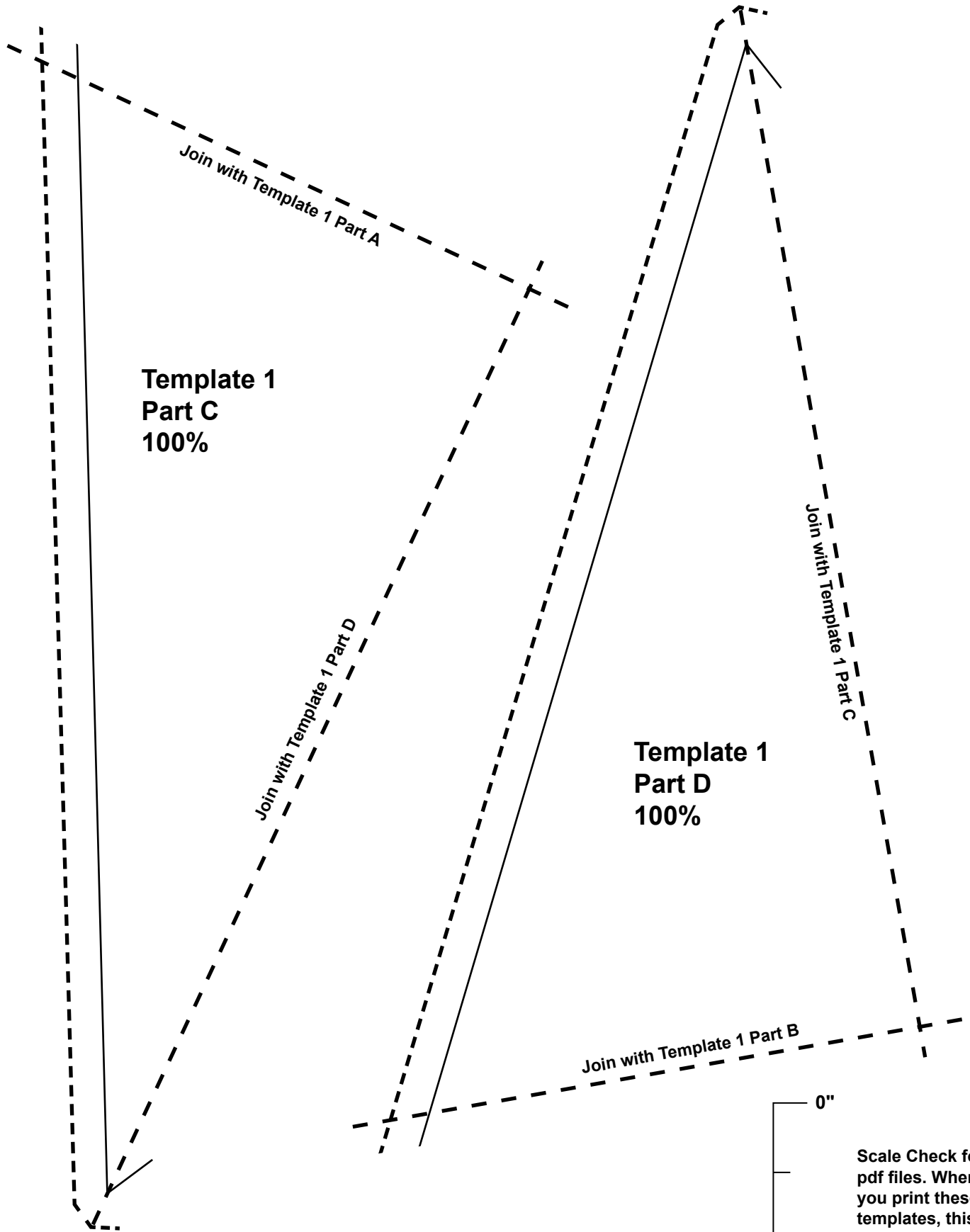
**Template 1  
Part B  
100%**

Join with Template 1 Part A

Join with Template 1 Part D

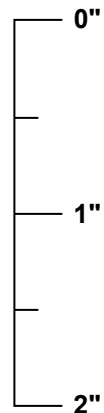


**Scale Check for pdf files. When you print these templates, this ruler should measure 2 inches long. If it does not, change, "page scaling" to "none" in the print dialog box.**

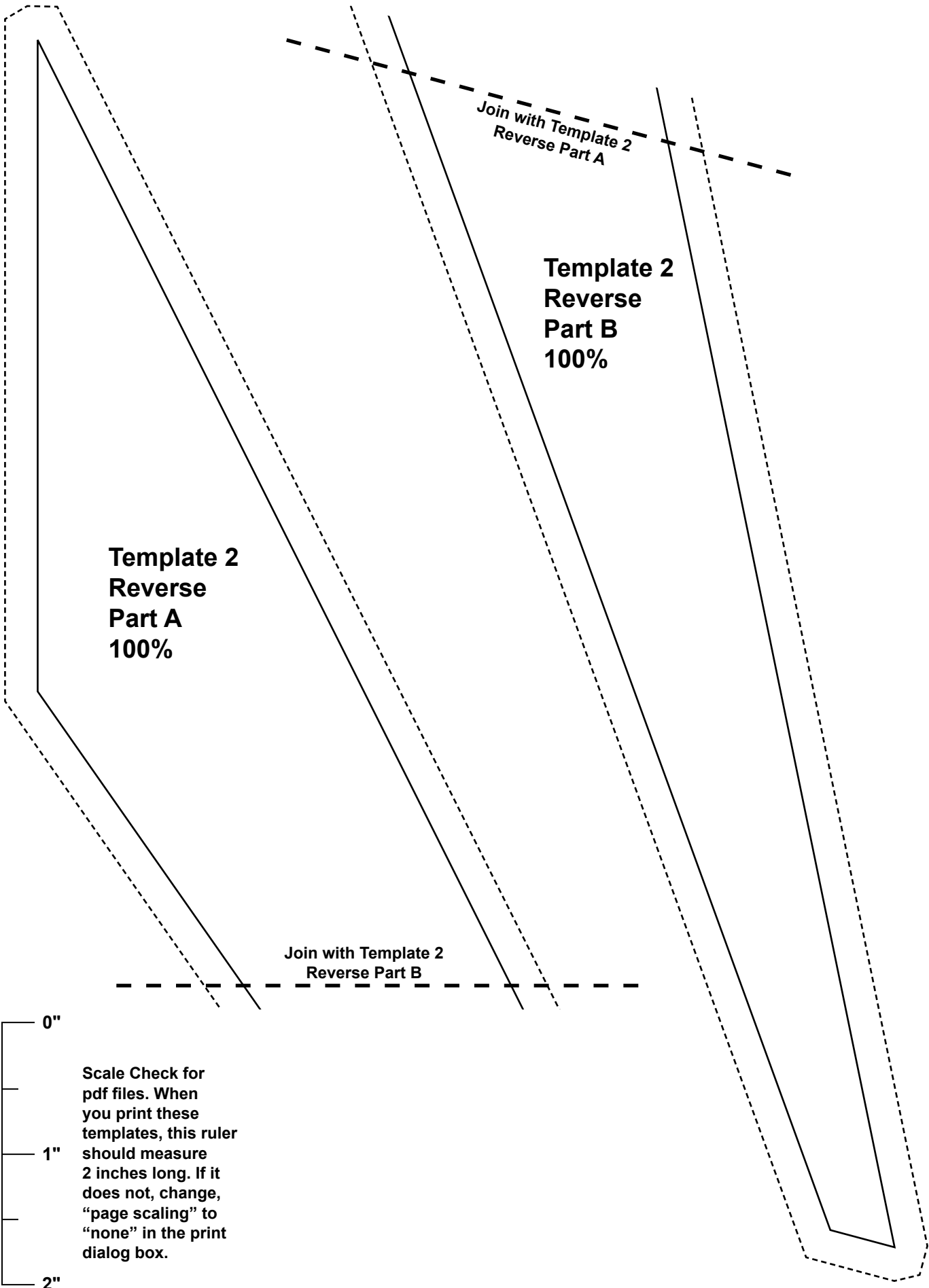


**Template 1  
Part C  
100%**

**Template 1  
Part D  
100%**



**Scale Check for pdf files. When you print these templates, this ruler should measure 2 inches long. If it does not, change, "page scaling" to "none" in the print dialog box.**

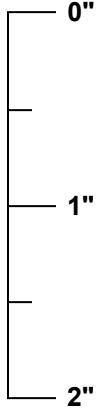


**Template 2  
Reverse  
Part A  
100%**

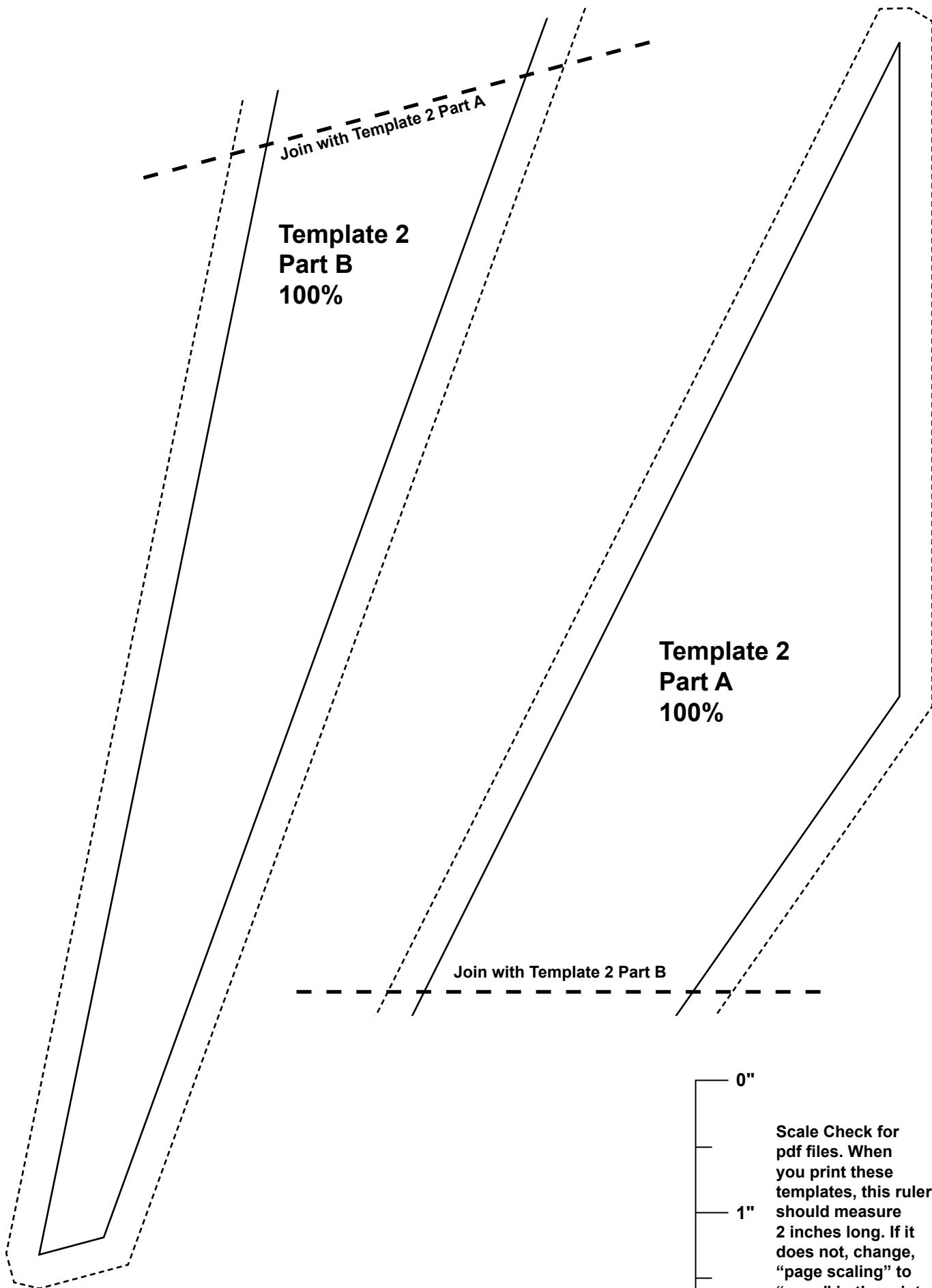
**Template 2  
Reverse  
Part B  
100%**

*Join with Template 2  
Reverse Part A*

*Join with Template 2  
Reverse Part B*



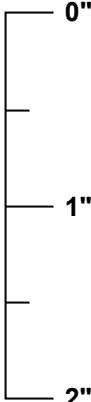
**Scale Check for  
pdf files. When  
you print these  
templates, this ruler  
should measure  
2 inches long. If it  
does not, change,  
“page scaling” to  
“none” in the print  
dialog box.**



**Template 2  
Part B  
100%**

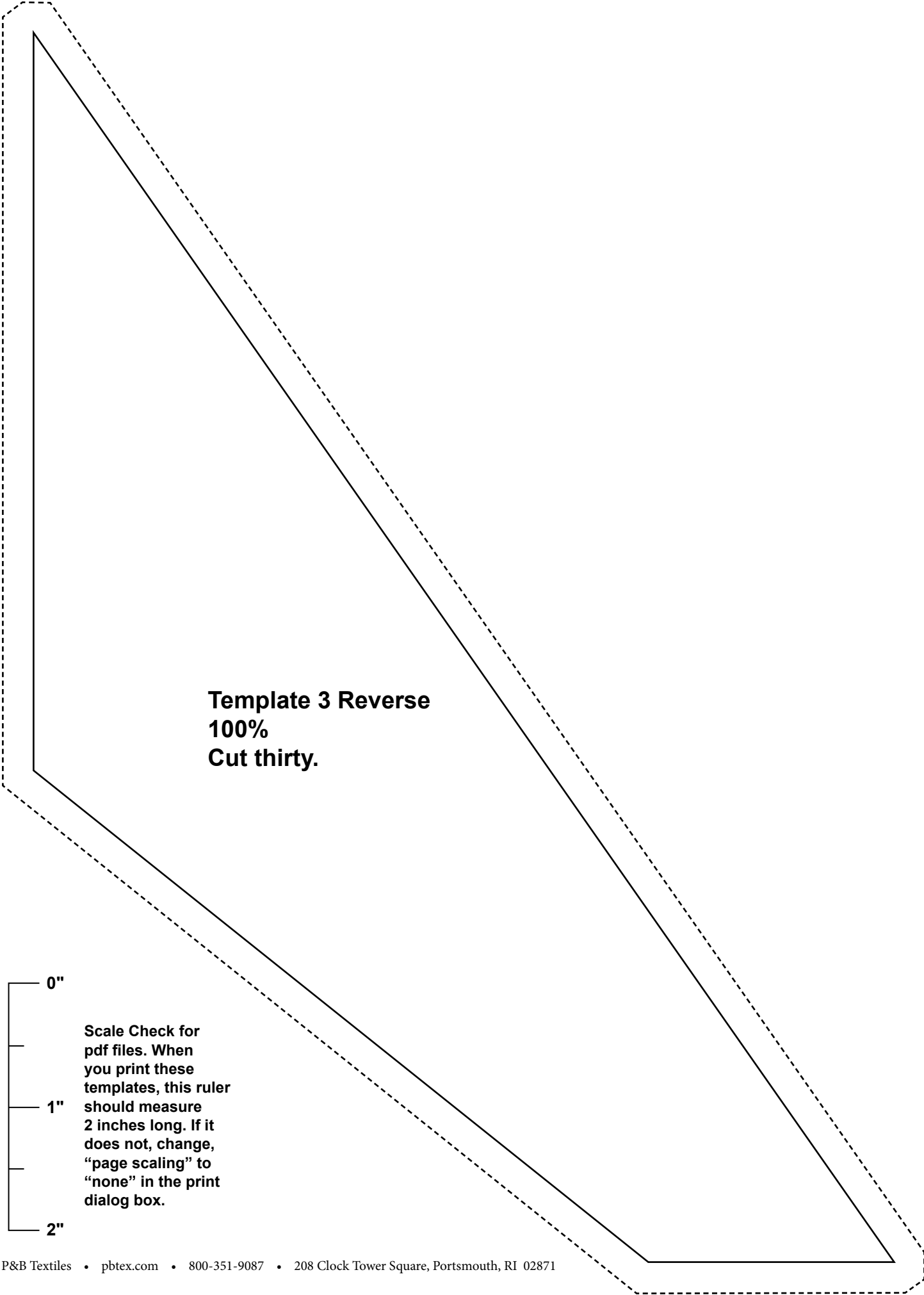
**Template 2  
Part A  
100%**

Join with Template 2 Part B

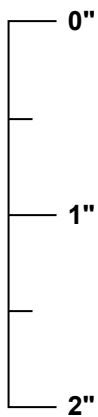


**Scale Check for pdf files. When you print these templates, this ruler should measure 2 inches long. If it does not, change, "page scaling" to "none" in the print dialog box.**



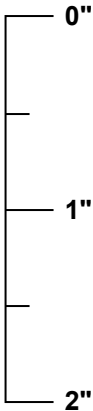


**Template 3 Reverse**  
**100%**  
**Cut thirty.**



**Scale Check for  
pdf files. When  
you print these  
templates, this ruler  
should measure  
2 inches long. If it  
does not, change,  
“page scaling” to  
“none” in the print  
dialog box.**

**Template 3**  
**100%**  
**Cut thirty.**



**Scale Check for pdf files. When you print these templates, this ruler should measure 2 inches long. If it does not, change, "page scaling" to "none" in the print dialog box.**

# Gemstones

Fabric Collection by Stephanie Ryan



GEMS 5219 BG



GEMS 5219 MU



GEMS 5220 BG



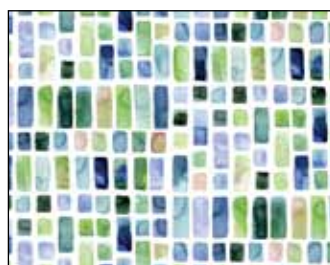
GEMS 5220 MU



GEMS 5221 BG\*



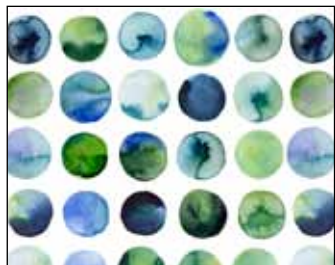
GEMS 5221 MU



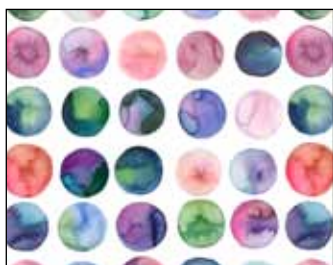
GEMS 5222 BG



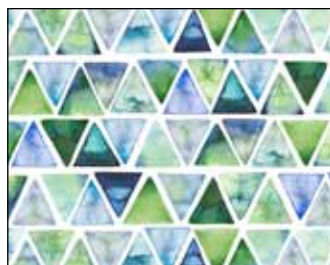
GEMS 5222 MU



GEMS 5223 BG



GEMS 5223 MU



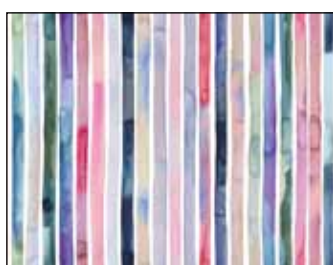
GEMS 5224 BG\*



GEMS 5224 MU



GEMS 5225 BG



GEMS 5225 MU



CTSO 5226 T\*



CTSO 5226 B\*



RA11 774 W\*



FWID 5113 BT†



BOUTIQUE

P&B Textiles • pbtex.com • 800-351-9087 • 208 Clock Tower Square, Portsmouth, RI 02871

\*Fabrics used in quilt.

†Backing