

Fresh Baked

Placemat Design by Cyndi Hershey



Placemat size: approximately 16" x 19"

Featuring fabrics from
Fresh Baked by Janelle Penner



P&B Textiles • pbtex.com • 800-351-9087 • 208 Clock Tower Square, Portsmouth, RI 02871

Fresh Baked

Fabric collection by Janelle Penner

Placemat designed by Cyndi Hershey

Skill level: Confident Beginner • Finished Placemat Size: approximately 16" x 19"

Placemat Yardages: *Makes four.*

Fabric A: FBAK 5116 E	1/4 yard
Fabric B: FBAK 5118 LT	3/8 yard
Fabric C: FBAK 5118 MU	7/8 yard
Fabric D: FBAK 5120 J	1/4 yard
Fabric E: SUE7 303 EW	1 yard
Backing: FBAK 5116 E	1 1/2 yards
Batting	four 20" x 24" rectangles

Cutting Instructions:

Please read all instructions carefully before beginning. Strips are cut across the width of fabric (perpendicular to selvages) unless otherwise stated. All seams are sewn with a 1/4" seam unless otherwise stated. Label all pieces.

From Fabric A:

1. Cut one 6 1/2" strip; subcut four 6 1/2" x 9 1/2" rectangles.

From Fabric B:

1. Cut seven 1 1/2" strips; subcut eight 1 1/2" x 13" strips and eight 1 1/2" x 18" strips. (6th Border)

From Fabric C:

1. Cut six 1 1/2" strips; subcut eight 1 1/2" x 10" strips and eight 1 1/2" x 15" strips. (4th Border)
2. Cut eight 2 1/4" strips. (Binding)

From Fabric D:

1. Cut five 1 1/4" strips; subcut eight 1 1/4" x 7 1/2" strips and eight 1 1/4" x 12" strips. (2nd Border)

From Fabric E:

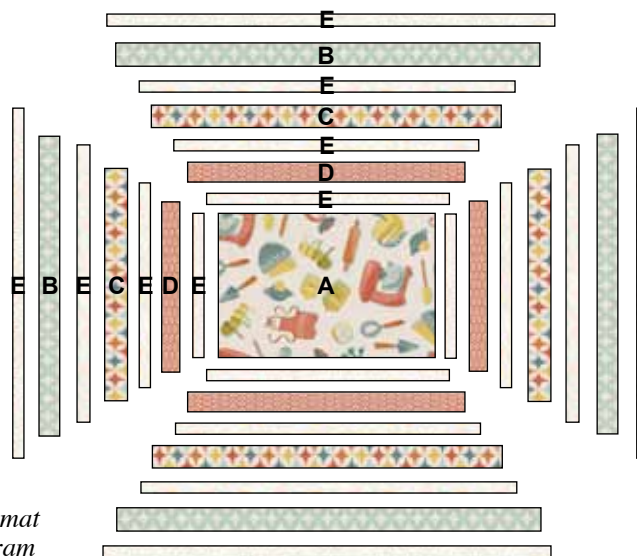
1. Cut twenty-eight 1" strips; subcut eight 1" x 6 1/2" strips, eight 1" x 10 1/2" strips, eight 1" x 9" strips, eight 1" x 13" strips, eight 1" x 12" strips, eight 1" x 16" strips, eight 1" x 15" strips, and 1" x 19" strips. (1st, 3rd, 5th, and 7th Border)

Piecing Instructions:

1. Sew one 1" x 6 1/2" E strip to both ends of one 6 1/2" x 9 1/2" A rectangle. Sew one 1" x 10 1/2" E strip to the top and bottom of the rectangle. (1st Border)
2. Sew one 1 1/4" x 7 1/2" D strip to both ends of the placemat. Sew one 1 1/4" x 12" D strip to the top and bottom of the placemat. (2nd Border)
3. Sew one 1" x 9" E strip to both ends of the placemat. Sew one 1" x 13" E strip to the top and bottom of the placemat. (3rd Border)
4. Sew one 1 1/2" x 10" C strip to both ends of the placemat. Sew one 1 1/2" x 15" C strip to the top and bottom of the placemat. (4th Border)
5. Sew one 1" x 12" E strip to both ends of the placemat. Sew one 1" x 16" E strip to the top and bottom of the placemat. (5th Border)
6. Sew one 1 1/2" x 13" B strip to both ends of the placemat. Sew one 1 1/2" x 18" B strip to the top and bottom of the placemat. (6th Border)
7. Sew one 1" x 15" E strip to both ends of the placemat. Sew one 1" x 19" E strip to the top and bottom of the placemat. (7th Border)
8. Repeat Steps 1-7 to complete the tops of four placemats.

Finishing:

1. Cut four 20" x 24" rectangles from backing fabric.
2. For each placemat, layer backing, batting, and placemat top.
3. Quilt as desired.
4. Trim layers even with placemat top squaring corners.
5. Join eight 2 1/4" C binding strips with diagonal seams. Press seams open. Attach binding using your favorite method.
6. Make a label and sew to the back of the placemat.



Placemat
Diagram

Fresh Baked

Fabric Collection by Janelle Penner



FBAK 5114 PA



FBAK 5115 LT



FBAK 5116 E*†



FBAK 5116 LT



FBAK 5117 LT



FBAK 5117 T



FBAK 5118 LT*



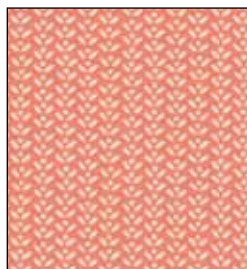
FBAK 5118 MU*



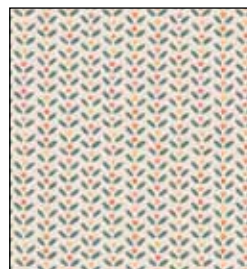
FBAK 5118 Y



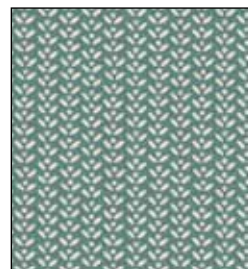
FBAK 5119 MU



FBAK 5120 J*



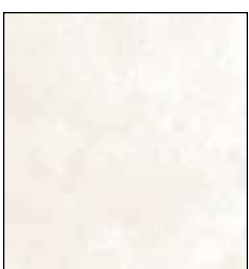
FBAK 5120 MU



FBAK 5120 T



FBAK 5121 MU



SUE7 303 EW*