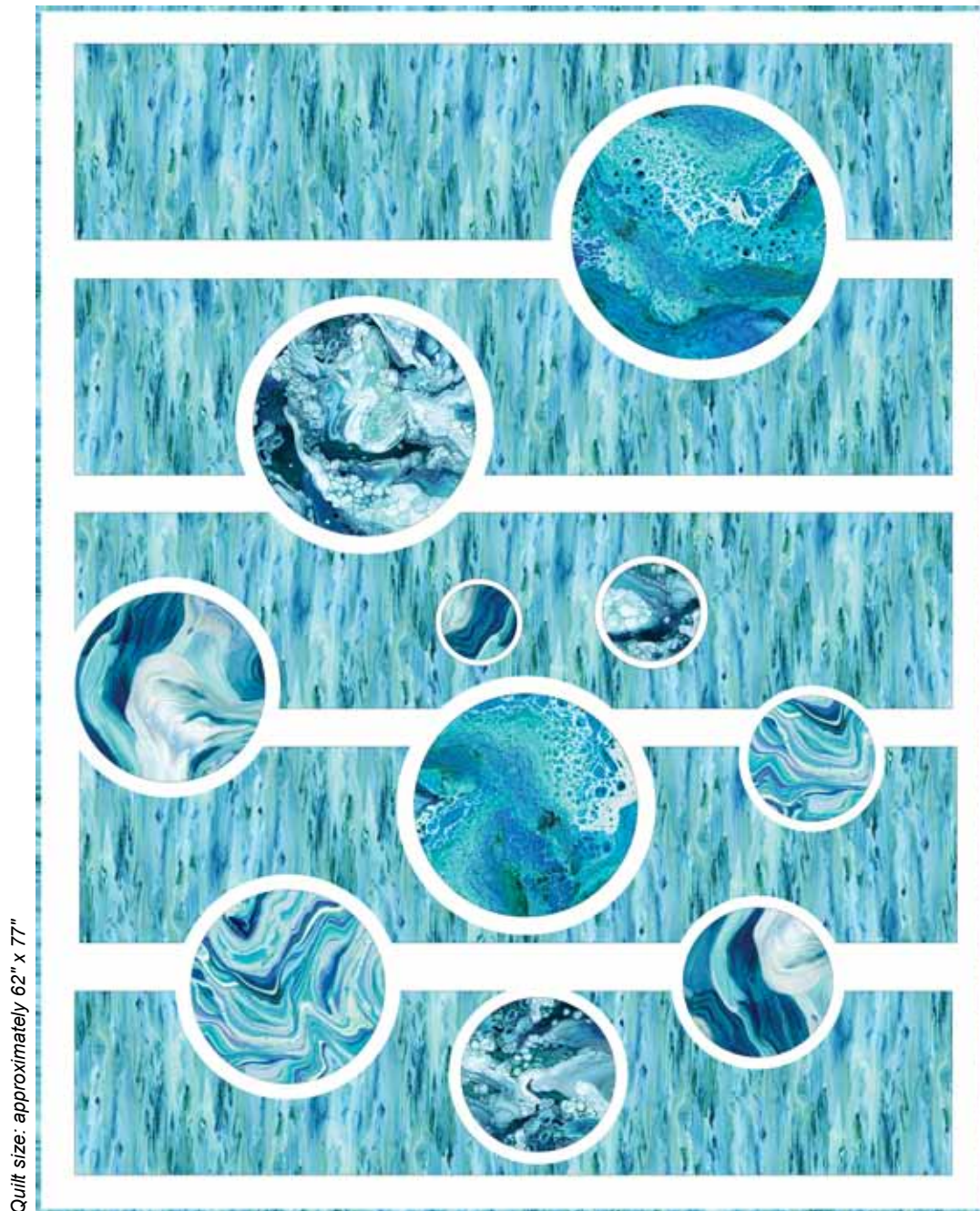
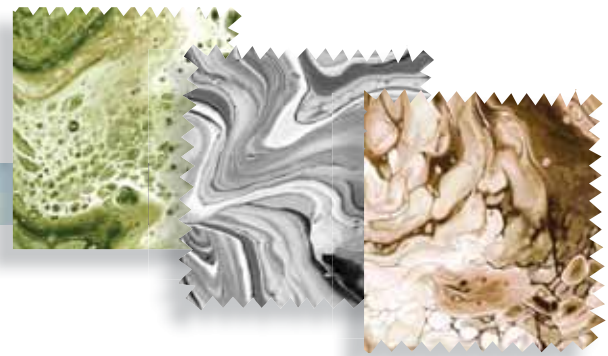


# Fluidity

Original Quilt Design by Gina Gempesaw



Quilt size: approximately 62" x 77"

*Featuring fabrics from  
Fluidity by P&B Textiles*



P&B Textiles • [pbtex.com](http://pbtex.com) • 800-351-9087 • 208 Clock Tower Square, Portsmouth, RI 02871

# Fluidity

Fabric collection by P&B Textiles

Original Quilt designed by Gina Gempesaw

Skill level: Confident Beginner • Finished Quilt Size: approximately 49" x 62"

## Yardages:

Fabric A: <b>FLUI 4137 T</b> .....	2 3/8 yards
Fabric B: <b>FLUI 4135 T</b> .....	Fat Quarter
Fabric C: <b>FLUI 4136 T</b> .....	1/2 yard
Fabric D: <b>FLUI 4138 T</b> .....	Fat Quarter
Fabric E: <b>FLUI 4139 T</b> .....	Fat Quarter
Fabric F: <b>RA12 808 W</b> .....	2 1/2 yards
Backing: <b>FLUI 4136 T suggested</b> .....	3 1/4 yards
Batting .....	57" x 70"

**Additional Supplies:** Lightweight paper backed fusible web product of choice, fine point marker or mechanical pencil and 1 1/4 yards of white fabric for lining.

## Cutting Instructions:

*Please read all instructions carefully before beginning. Strips are cut across the width of fabric (perpendicular to selvages) unless otherwise stated. All seams are sewn with a 1/4" seam unless otherwise stated. Label all pieces.*

**NOTE:** See "NOTE" at end of pattern for instructions on making fabric circles and appliqué. Then trace a circle from fusible web for each circle listed below.

### From Fabric A:

1. Cut (6) 10 1/2" WOF strips.
2. Cut (6) 2 1/2" WOF strips for binding.

### From Fabric B:

1. Cut (1) 6" diameter circle.
2. Cut (1) 10" diameter circle.

### From Fabric C:

1. Cut (1) 13 1/2" diameter circle.
2. Cut (1) 11 1/2" diameter circle.

### From Fabric D:

1. Cut (1) 4" diameter circle.
2. Cut (1) 7" diameter circle.
3. Cut (1) 10" diameter circle.

### From Fabric E:

1. Cut (1) 5" diameter circle.
2. Cut (1) 7 1/2" diameter circle.
3. Cut (1) 11 1/2" diameter circle.

### From Fabric F:

**Note:** Line each of the circle appliqués listed below to prevent the background strips from shadowing through the white and light fabrics. Read Notes at the end of the pattern.

1. Cut (4) 2 1/2" x 45 1/2" LOF strips for sashing.
2. Cut (2) 2 1/2" x 58 1/2" LOF strips for side borders.

3. Cut (2) 2 1/2" x 49 1/2" LOF strips for top and bottom borders.
4. Cut (1) 5" diameter circle.
5. Cut (1) 6" diameter circle.
6. Cut (1) 7 1/2" diameter circle.
7. Cut (1) 9" diameter circle.
8. Cut (1) 9 1/2" diameter circle.
9. Cut (1) 11 1/2" diameter circle.
10. Cut (1) 12" diameter circle.
11. Cut (2) 13 1/2" diameter circle.
12. Cut (1) 15 1/2" diameter circle.

## Piecing Instructions:

### A. Background Strips:

1. Sew 10 1/2" A strips together end to end. Press seam open. Cut five 45 1/2" lengths for background. There will be leftovers.
2. Sew the A and F1 strips together as shown in Figure 1. This quilt center should measure 45 1/2" x 58 1/2".
3. Sew an F2 strip onto both sides of quilt center. Sew the F3 strips onto the top and bottom of the Quilt (Figure 1). The quilt should measure 49 1/2" x 62 1/2"

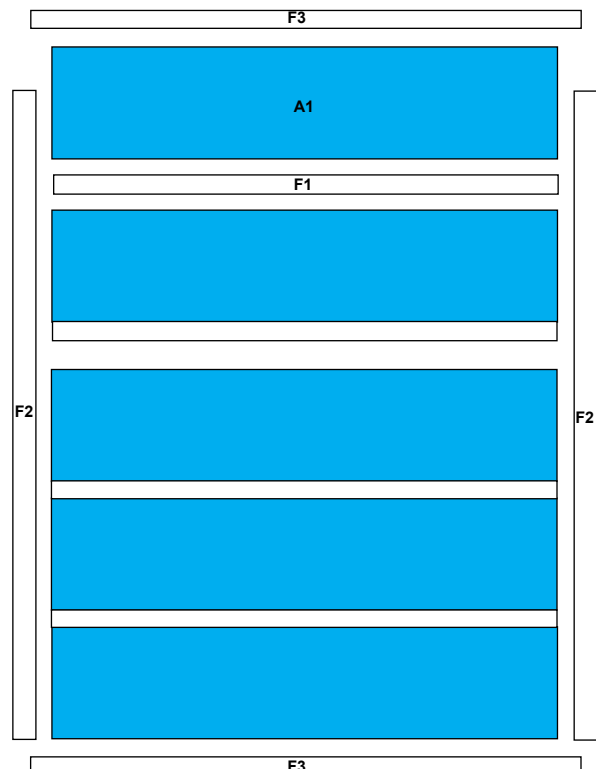


Figure 1



### B. Circles:

1. Center and fuse the D1 circle on the F4 circle.
2. Center and fuse the E1 circle on the F5 circle.
3. Center and fuse the B1 circle on the F6 circle.
4. Center and fuse the D2 circle on the F7 circle.
5. Center and fuse the E2 circle on the F8 circle.
6. Center and fuse the B2 circle on the F9 circle.
7. Center and fuse the D3 circle on the F10 circle.
8. Center and fuse the C2 circle on an F11 circle.
9. Center and fuse the E3 circle on an F11 circle.
10. Center and fuse the C1 circle on the F12 circle

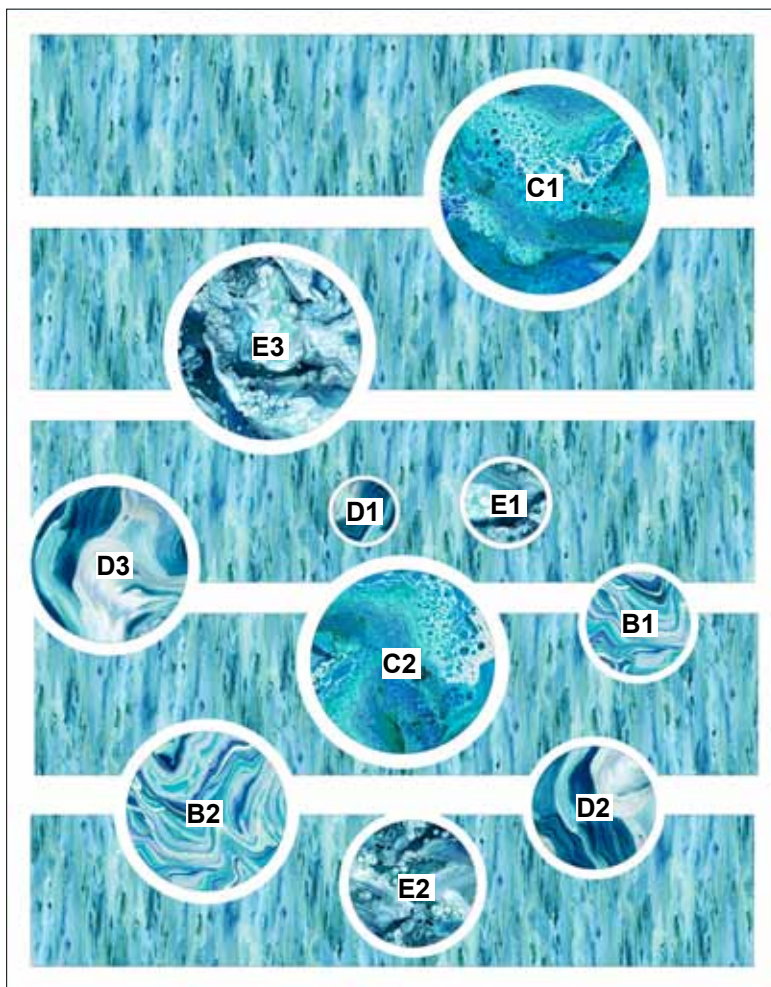
### *Quilt Assembly:*

Refer to Quilt Diagram and Photo

1. Place fused circles on the quilt as shown or as desired.
2. Appliqué the circles in place.

### *Finishing:*

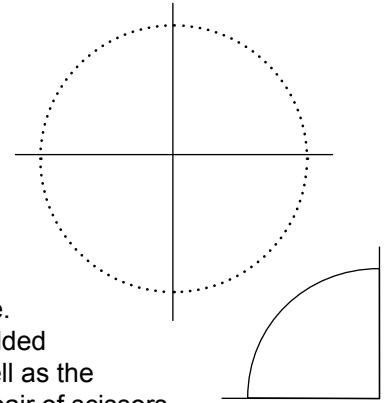
1. Prepare backing with a horizontal seam to measure 57" x 70". Press seam open.
2. Layer quilt top, batting, and backing. Baste layers together.
3. Quilt as desired.
4. Trim layers even with quilt top.
5. Join A2 binding strips with diagonal seams. Press seams open. Attach binding to quilt using your favorite method.
6. Make a label and sew to the back of the quilt.



*Quilt Diagram*

## NOTES ON MAKING FABRIC CIRCLES:

1. For smaller circles, several rulers are available. *The Cut A Round Tool*, *Easy Circle Cut Ruler* and *Creative Grids Circle Savvy* are examples of rulers to use in cutting circles.
2. For larger circles, found objects (with the correct diameter) such as a large quilt hoop may be used as a template.
3. To make any size circle, create a compass with 2 pencils tied together with a string. The length of the string between pencils is equal to the radius of the circle (1/2 of the diameter). Position one pencil at the center point of the circle while marking the outer edge of the circle with the other pencil with the string held taut. Both pencils need to be held perpendicular to the surface.
4. A pencil and a long ruler such as a yardstick can be used to draw a circle template.  
On a large piece of paper, mark the center point of the circle. With the ruler, mark the horizontal and vertical lines. Then, with the ruler measuring the radius from the center of the circle, mark with a small dash or a dot, the edge of the circle. Adjust the ruler position a few degrees and mark the outer edge again. Repeat until most of the edge of the circle is marked with a small dash or dot. Connect the small dashes/dots to draw the circle.
5. Circle templates can also be generated by a variety of computer software programs including *Electric Quilt*.
6. With larger circles, creating a half or quarter circle template may be more manageable.  
In this case, fold the fabric in half or quarters to correspond to the template. Pin the folded fabric and finger-crease the folds. Position the template, matching center points as well as the folds with the template edges. Mark the circle and cut through the layers with a good pair of scissors.



## NOTES ON LINING WHITE FABRIC CIRCLES FOR RAW EDGE APPLIQUÉ:

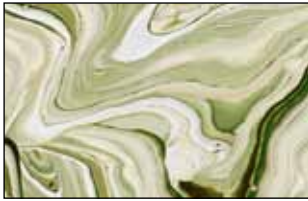
The white circles should be lined to avoid the darker background fabrics from showing through. For the lining, use a plain white fabric and fusible webbing. To line each white circle, simply layer a fusible, the lining material, another fusible and the white fabric together. Fuse layers together, draw circle on fusible side of layers and cut out circle on drawn line.

## NOTES ON RAW EDGE APPLIQUÉ:

Trace circle on the paper side of the fusible web. Rough cut around the circle and fuse to the wrong side of the appropriate fabric. Cut out circle on drawn line. Layer each colored circle on the correct lined white circle and using an applique press sheet as necessary, fuse together as listed under PIECING INSTRUCTIONS B. CIRCLES. Appliqué stitch – use your choice of appliqué stitch. A small zigzag stitch was used for this sample.

# Fluidity

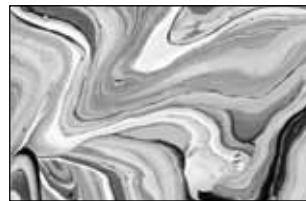
Fabric Collection  
by P&B Textiles



FLUI 4135 G



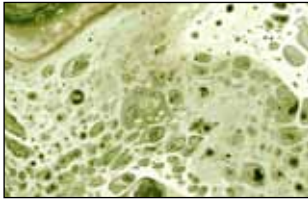
FLUI 4135 LZ



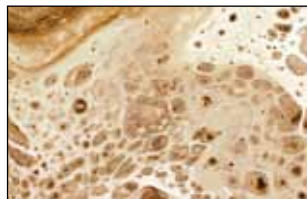
FLUI 4135 SS



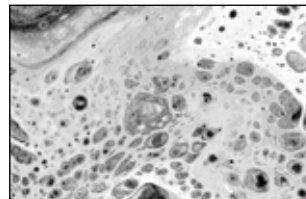
FLUI 4135 T\*



FLUI 4136 G



FLUI 4136 LZ



FLUI 4136 SS



FLUI 4136 T\* †



FLUI 4137 G



FLUI 4137 LZ



FLUI 4137 SS



FLUI 4137 T\*



FLUI 4138 G



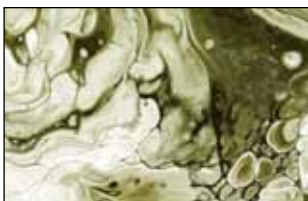
FLUI 4138 LZ



FLUI 4138 SS



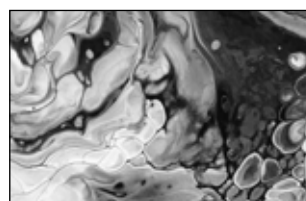
FLUI 4138 T\*



FLUI 4139 G



FLUI 4139 LZ



FLUI 4139 SS



FLUI 4139 T\*



RA12 808 W\*