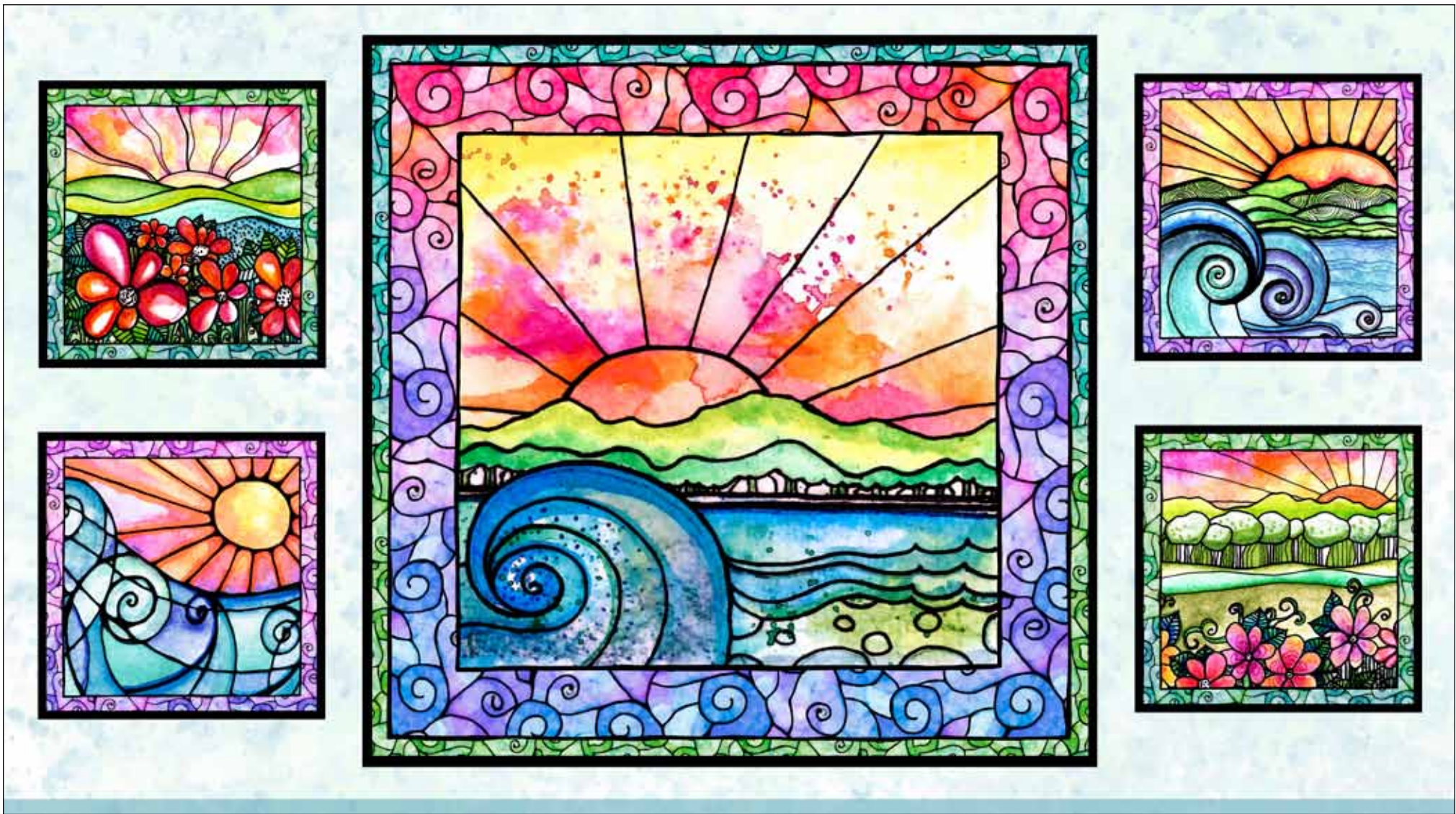


# *Flower To The Sun*

*by Robin Mead*





Style #FTSU

Pattern #5561 PA

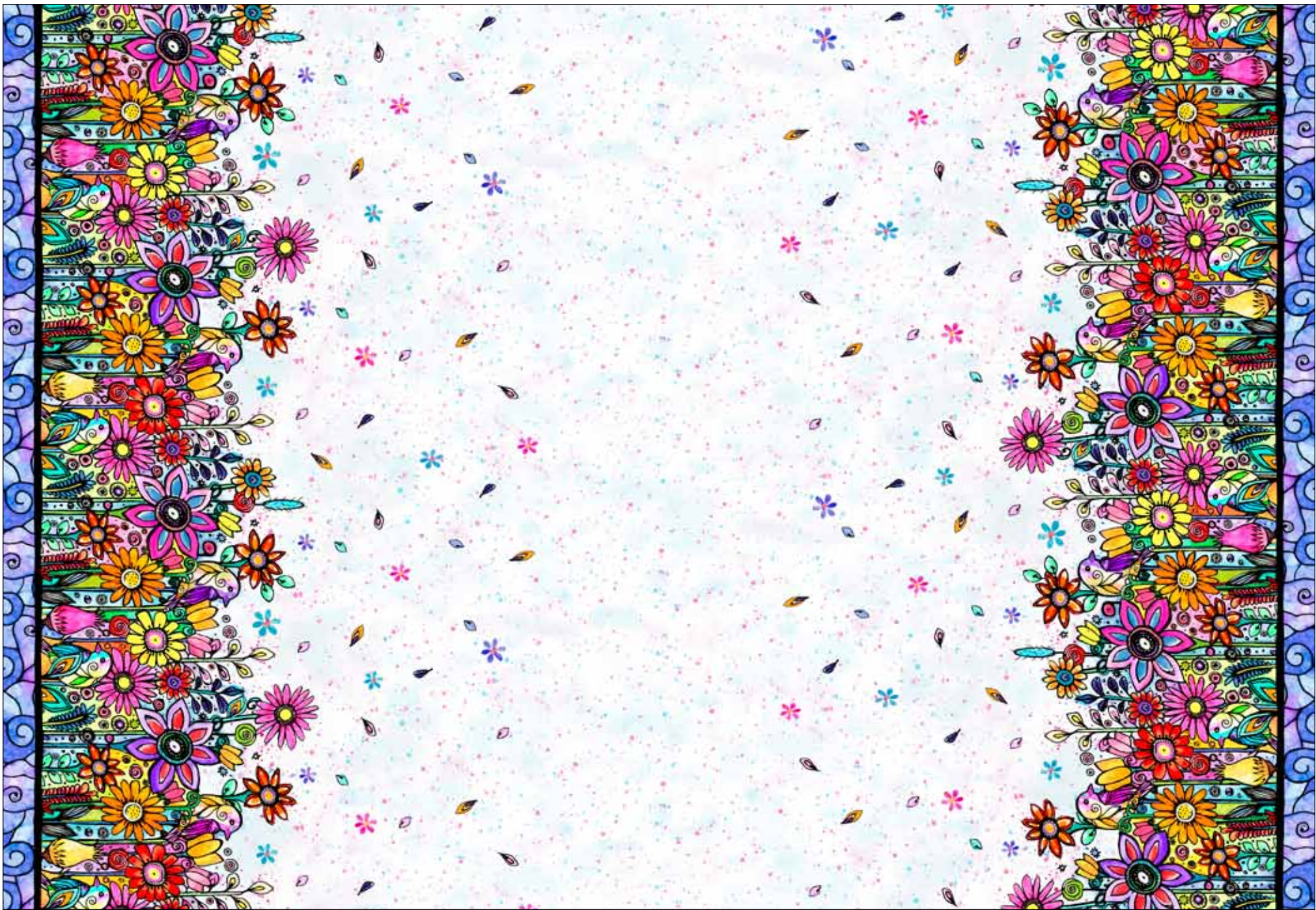
Reduced; Small blocks 8 1/2" x 8 1/2" including 1/4" border;  
large block 21 3/4" x 21 1/2" including 1/4" border; 10 yards = 15 panels





Style #FTSU  
Pattern #5561 PA  
100%





Style #FTSU

Pattern #5562 MU

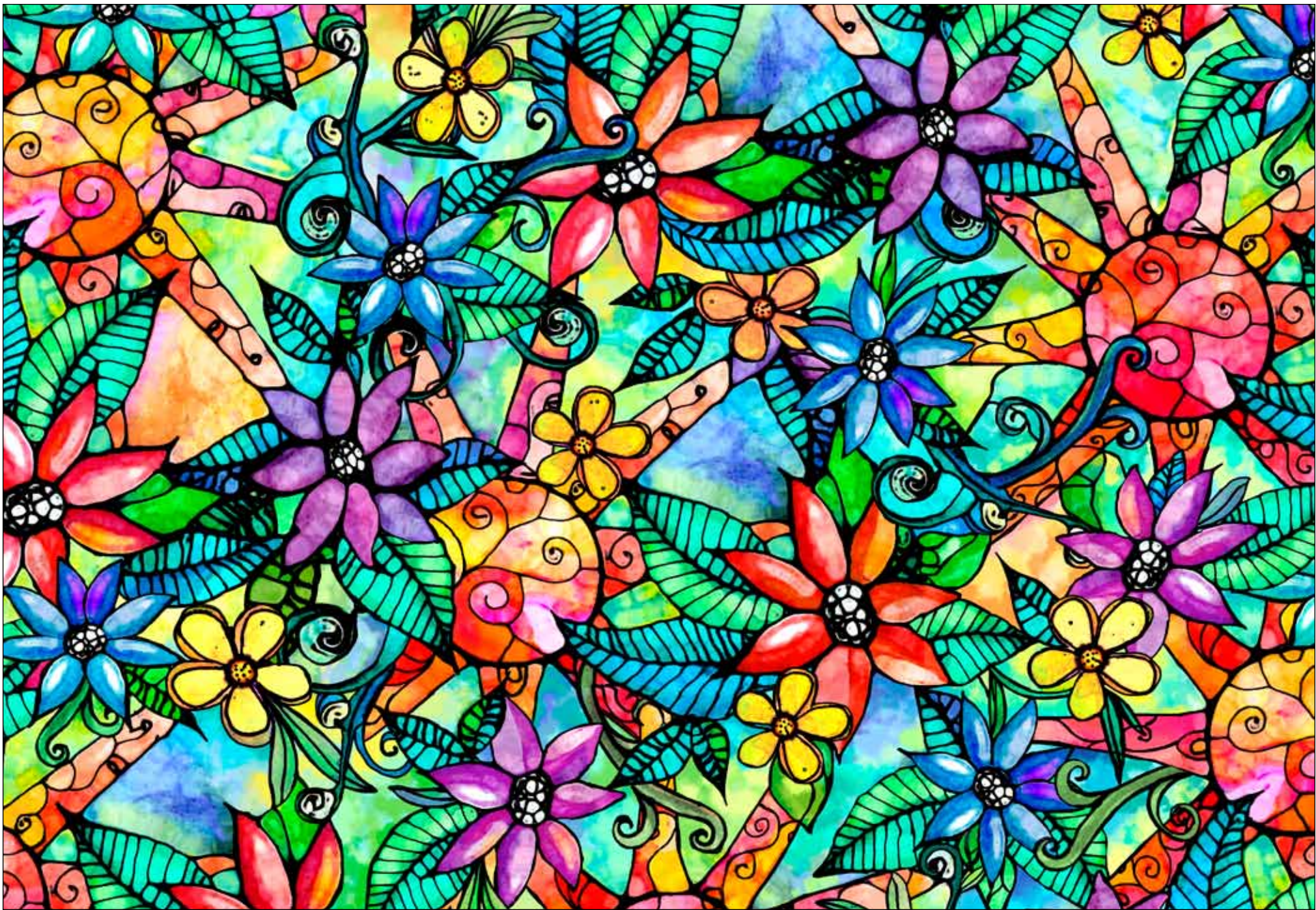
Reduced; 1" blue border; 1/4" black rule; 9" flowers and 7" tossed petals





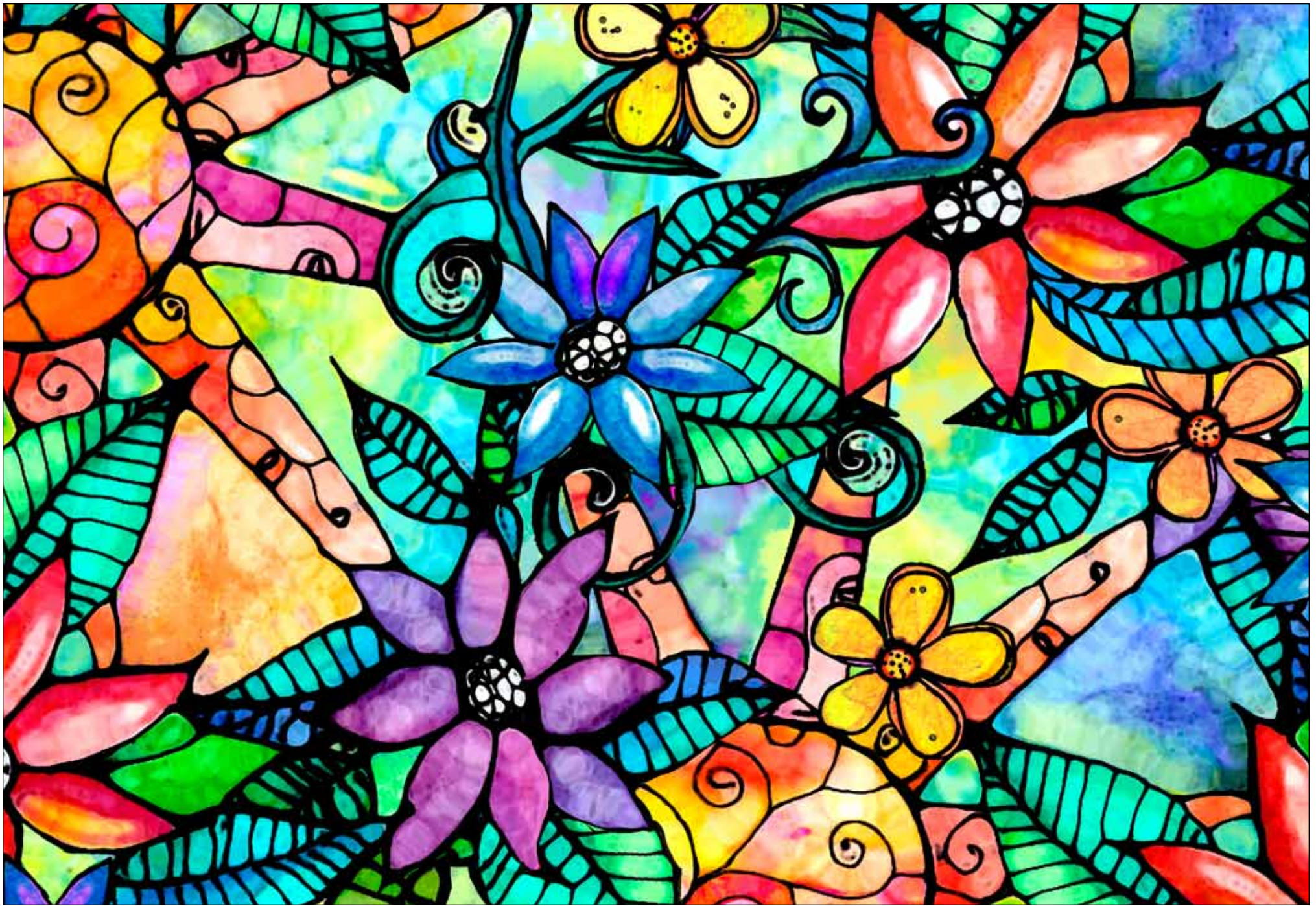
Style #FTSU  
Pattern #5562 MU  
100%





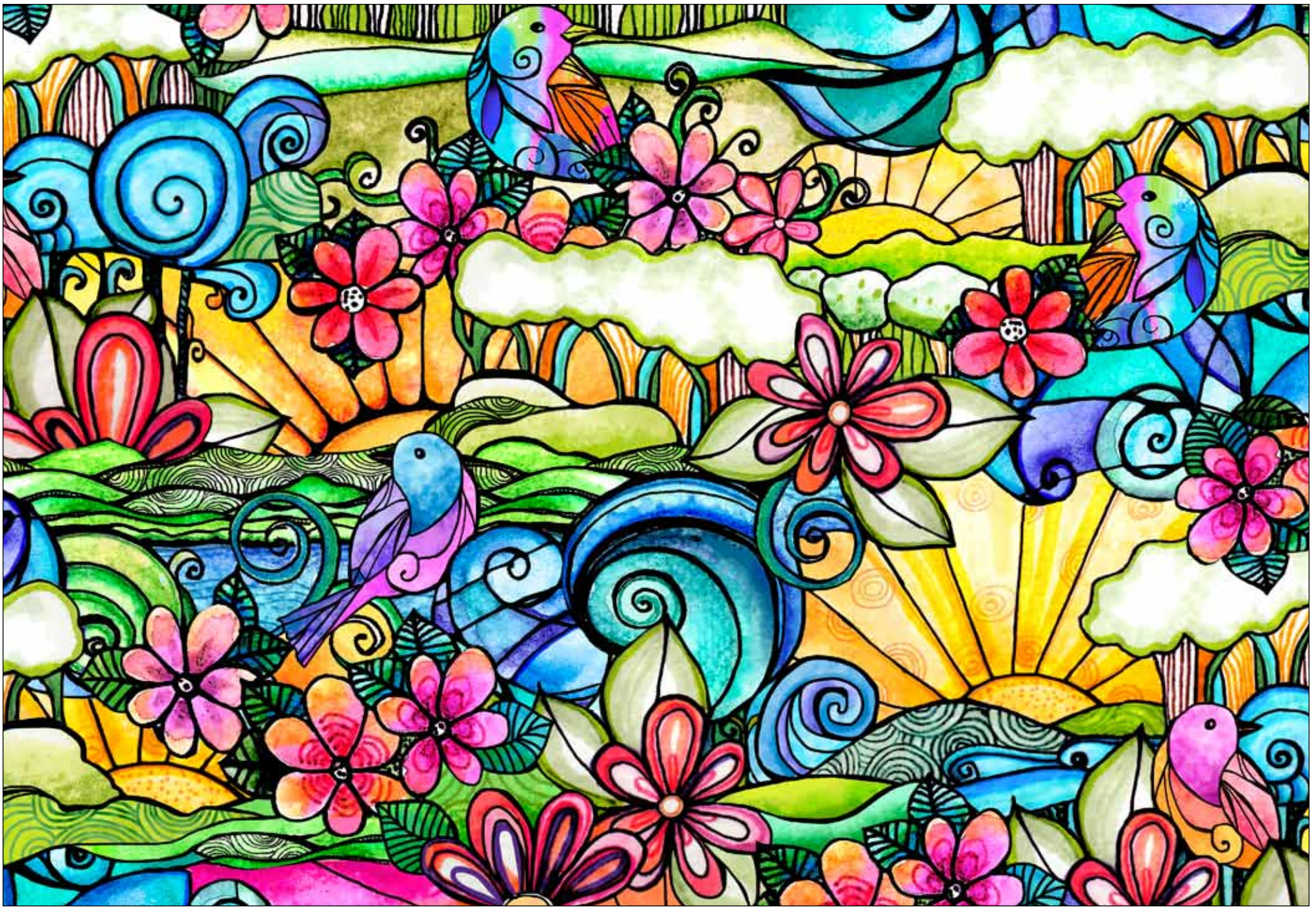
Style #FTSU  
Pattern #5563 MU  
Reduced





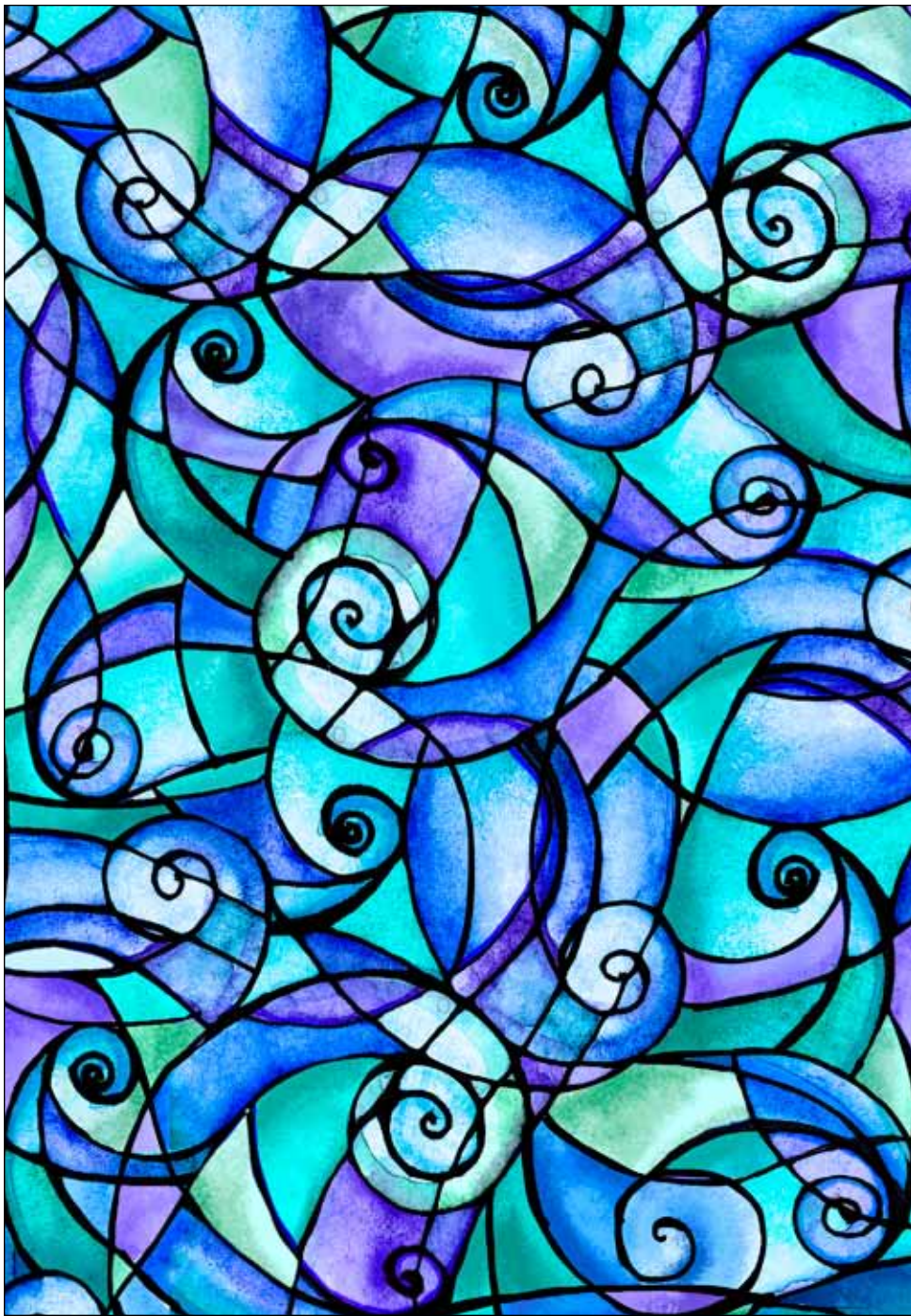
Style #FTSU  
Pattern #5563 MU  
100%





Style #FTSU  
Pattern #5564 MU  
100%





Style #FTSU  
Pattern #5565 BC  
100%

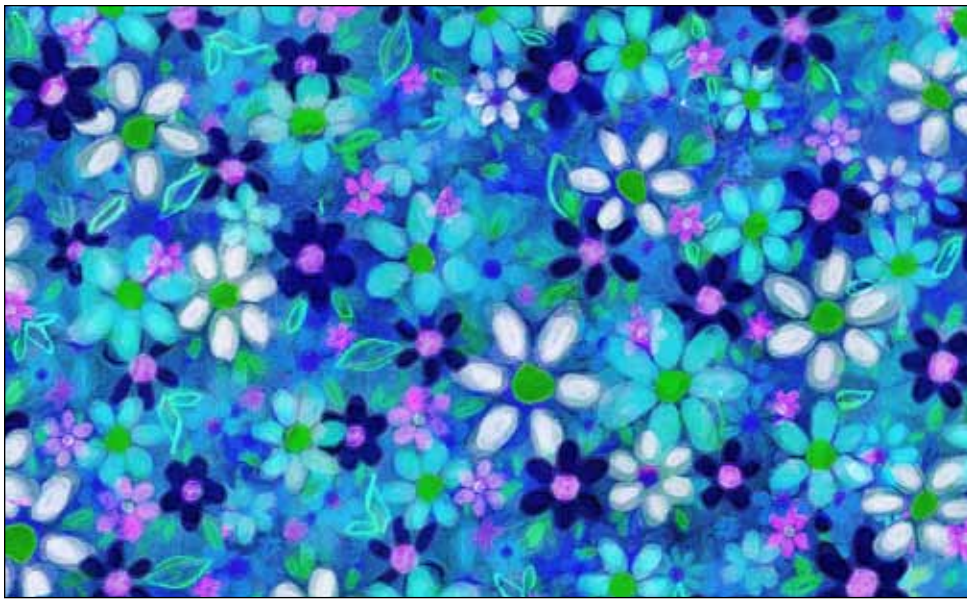


Style #FTSU  
Pattern #5565 GT  
100%



Style #FTSU  
Pattern #5565 PJ  
100%

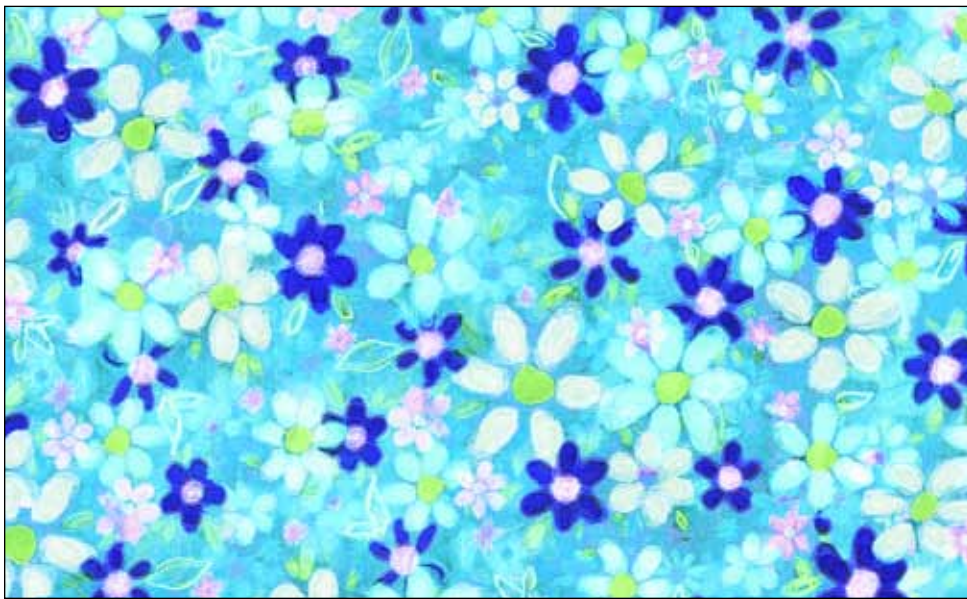




Style #FTSU  
Pattern #5566 BC  
100%



Style #FTSU  
Pattern #5566 PR  
100%



Style #FTSU  
Pattern #5566 TB  
100%



Style #FTSU  
Pattern #5566 YO  
100%





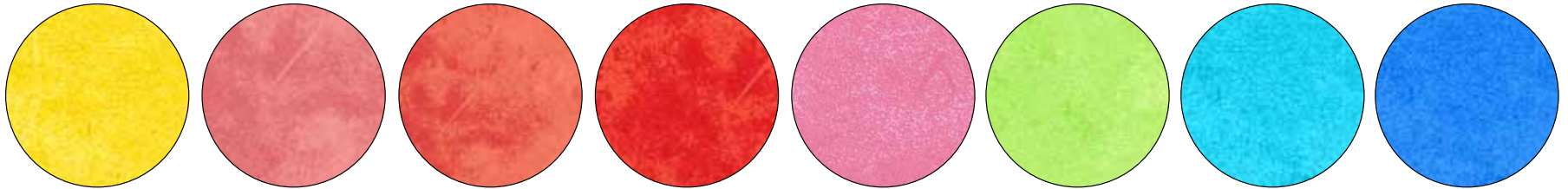
Style #FTSU  
Pattern #5567 WP  
100%



Style #FTSU  
Pattern #5567 WT  
100%



## BLENDER SUGGESTIONS:



SUEB 300 Y

SUE7 303 J

SUE7 303 O

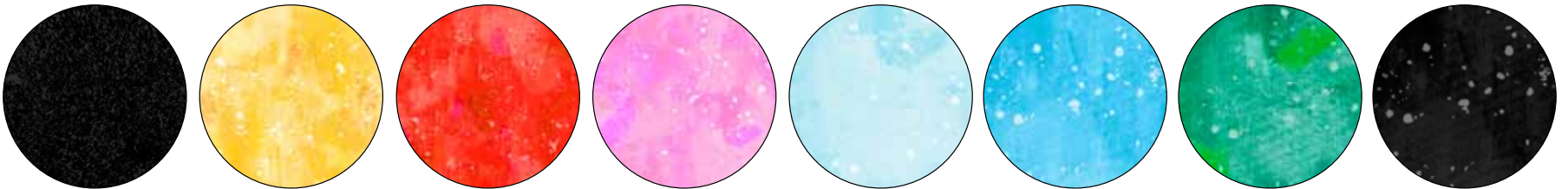
SUE7 303 RO

SUES 299 P

SUE7 303 YG

SUEB 300 T

SUEB 300 LB



SUED 300 K

COSM 5130 Y

COSM 5130 R

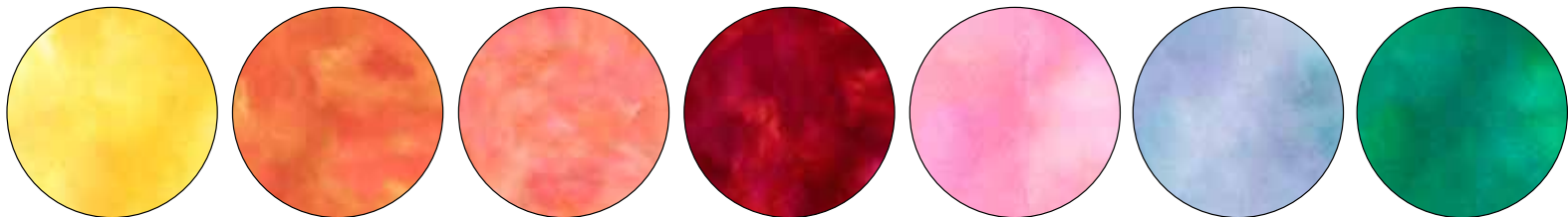
COSM 5130 P

COSM 5130 LB

COSM 5130 B

COSM 5130 DG

COSM 5130 K



CSTO 5226 Y

CSTO 5226 O

CSTO 5226 J

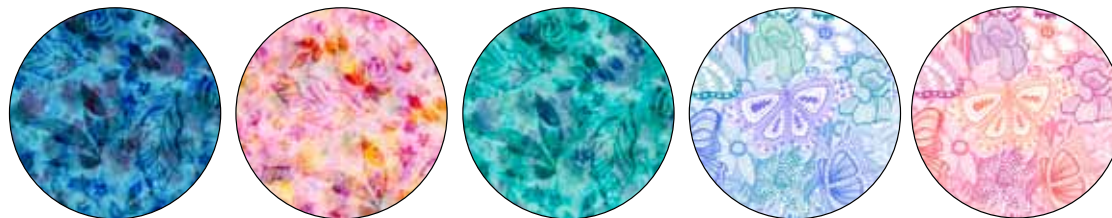
CSTO 5226 R

CSTO 5226 P

CSTO 5226 LB

CSTO 5226 G

## 108" SUGGESTIONS:



BOTW 5290 B

BOTW 5290 P

BOTW 5290 T

SKET 5242 BT

SKET 5242 PJ



100% cotton ♦ Cold wash & dry ♦ 44"/45" ♦ Colors may vary due to printing process

Not Intended for Children's Sleepwear





Basket size approximately: l to r - small 4", large 8" & medium 6"

## The Nestlings Basket by Round the Bobbin

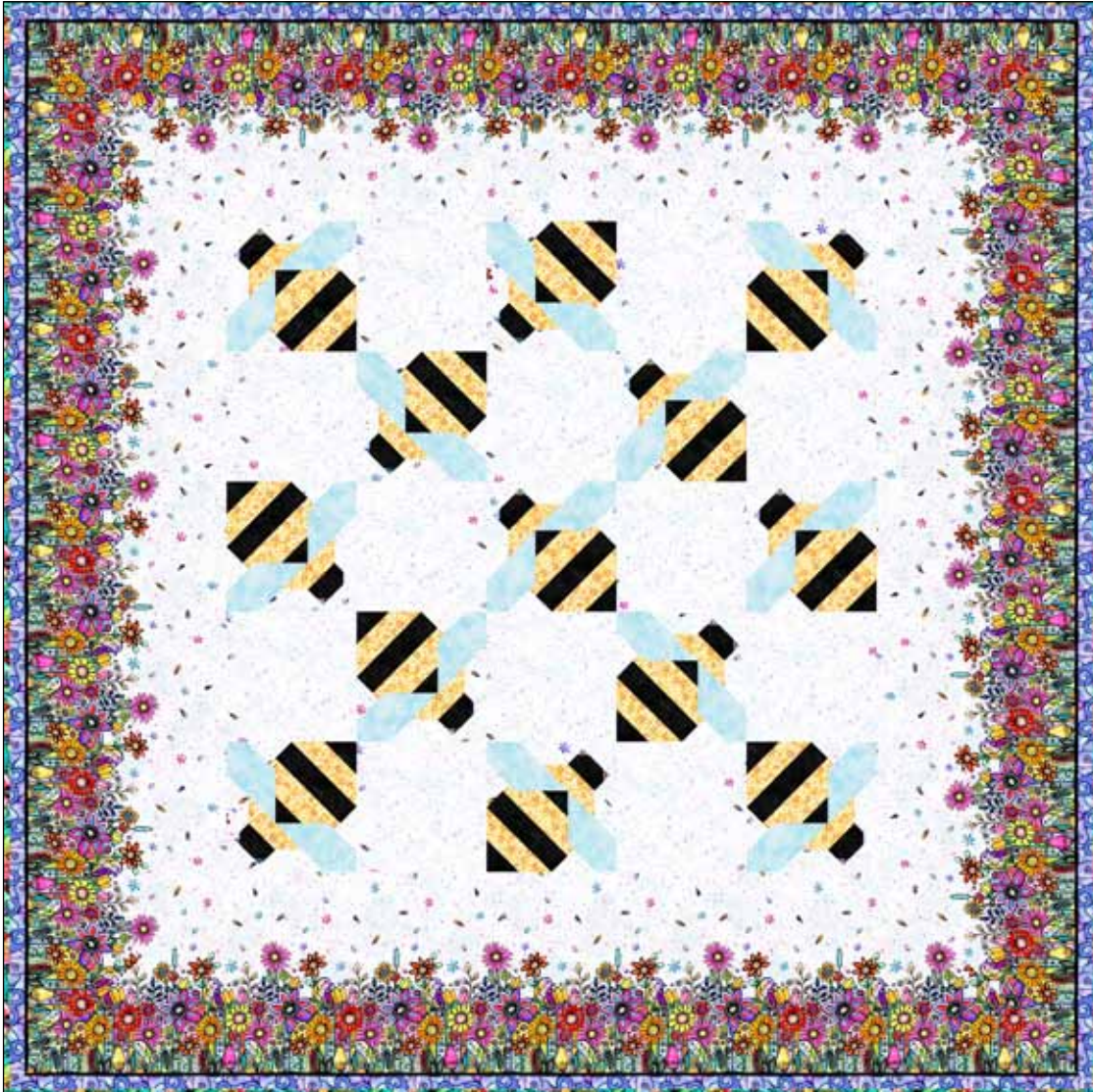
Pattern for Purchase

The Nestlings Basket pattern available directly from Round the Bobbin.

[www.aroundthebobbin.com](http://www.aroundthebobbin.com)

Fabric used: large FTSU 5563 MU/FTSU 5565 GT; medium FTSU 5564 MU/FTSU 5566 YO; small FTSU 5565 BC/FTSU 5566 TB





Quilt size approximately: 75" x 75"

## Polinate Quilt by Stacey Day

Pattern available at:  
[www.pbtex.com](http://www.pbtex.com) when the fabric ships.

### FABRIC REQUIREMENTS\*

FTSU 5562 MU .... 5 yards

FTSU 5563 MU .... 5/8 yard  
 (binding)

FTSU 5566 YO ..... 3/4 yard

SUED 300 K..... 1/2 yard

COSM 5130 LB..... 1/2 yard

Total yardage ..... 7 3/8 yards

*\*These yardages are estimates ONLY and may change on the pattern when it becomes available.*

### *Kit Chart*

Fabric (based on 15 yard bolts)	12	18	24
FTSU 5562 MU	4	6	8
FTSU 5563 MU	1	1	2
FTSU 5566 YO	1	1	2
SUED 300 K	1	1	1
COSM 5130 LB	1	1	1





Quilt size approximately: 64" x 64"

## Sunset Escapes Quilt by Stacey Day

Pattern available at:  
[www.pbtex.com](http://www.pbtex.com) when the fabric ships.

### FABRIC REQUIREMENTS\*

FTSU 5561 PA .....	1 panel	FTSU 5566 BC.....	1/4 yard
FTSU 5563 MU ....	1 yard	FTSU 5566 TB .....	1/4 yard
FTSU 5564 MU ....	1/4 yard	FTSU 5566 YO .....	1/8 yard
FTSU 5565 BC.....	1/4 yard	SUED 300 N .....	2 5/8 yards
FTSU 5565 GT.....	1/4 yard		
FTSU 5565 PJ.....	5/8 yard	Total yardage .....	6 3/8 yards
	(binding)		

*\*These yardages are estimates ONLY and may change on the pattern when it becomes available.*

### Kit Chart

Fabric (based on 15 yard bolts)	12	18	24
FTSU 5561 PA*	1	2	2
FTSU 5563 MU	1	2	2
FTSU 5564 MU	1	1	1
FTSU 5565 BC	1	1	1
FTSU 5565 GT	1	1	1
FTSU 5565 PJ	1	1	2
FTSU 5566 BC	1	1	1
FTSU 5566 TB	1	1	1
FTSU 5566 YO	1	1	1
SUED 300 N	3	4	5

\*10 yards = 15 panels