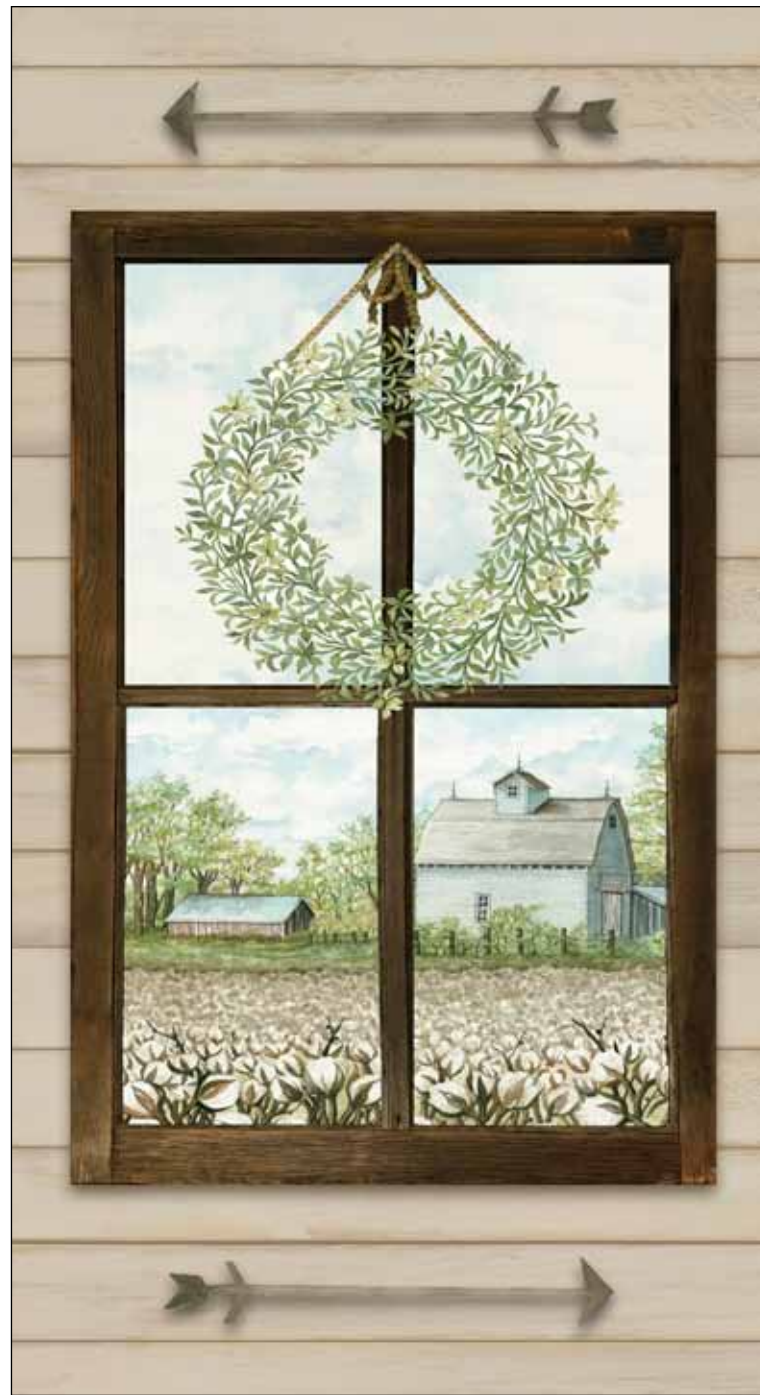


Farm View

by Cindy Jacobs





Style #FVIE
Pattern #5570 PA
Reduced; 24" x 44"; 10 yards = 15 panels



Style #FVIE
Pattern #5571 MU
Reduced



Style #FVIE
Pattern #5571 MU
100%



Style #FVIE
Pattern #5572 EW
100%



Style #FVIE
Pattern #5572 SB
100%



Style #FVIE
Pattern #5572 Z
100%



Style #FVIE
Pattern #5573 E
100%



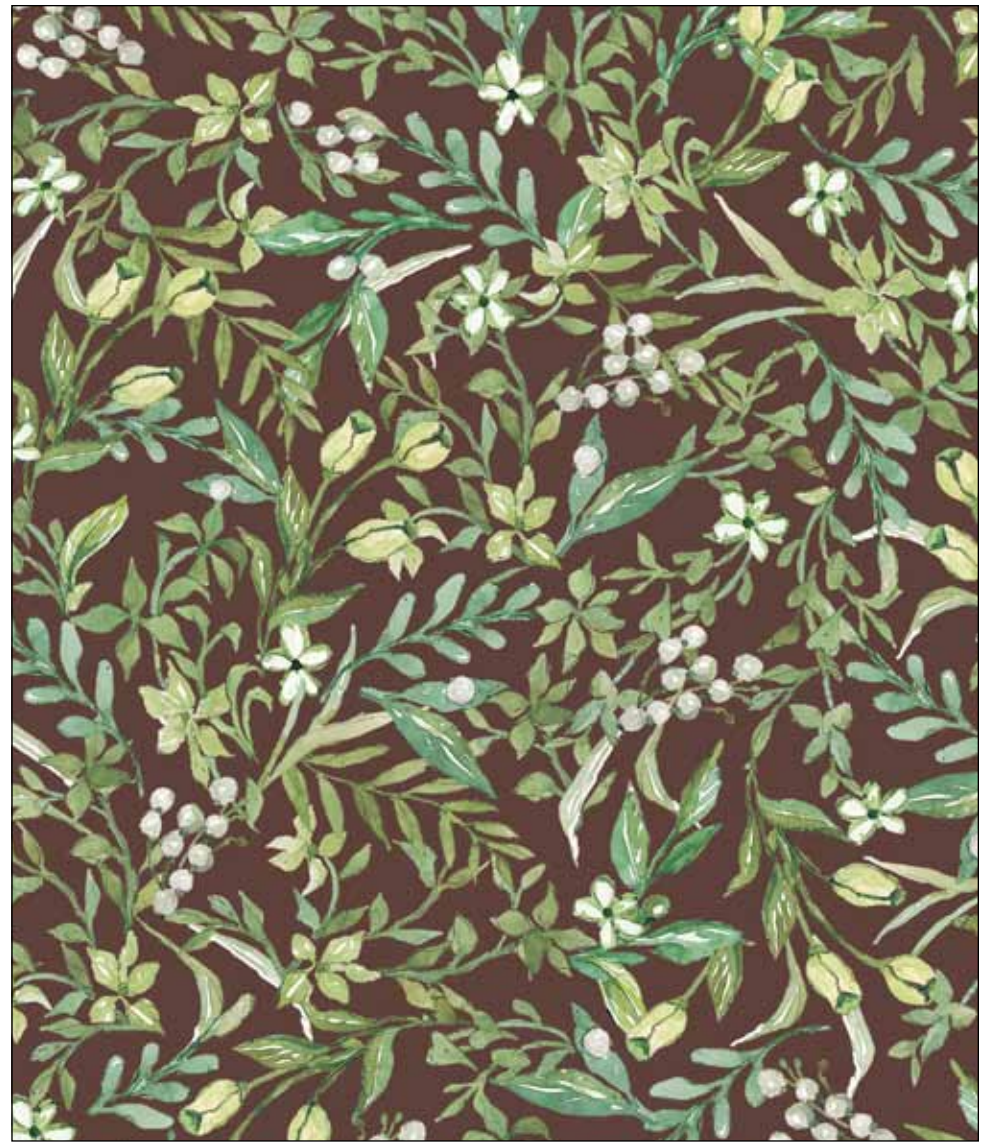
Style #FVIE
Pattern #5573 NE
100%



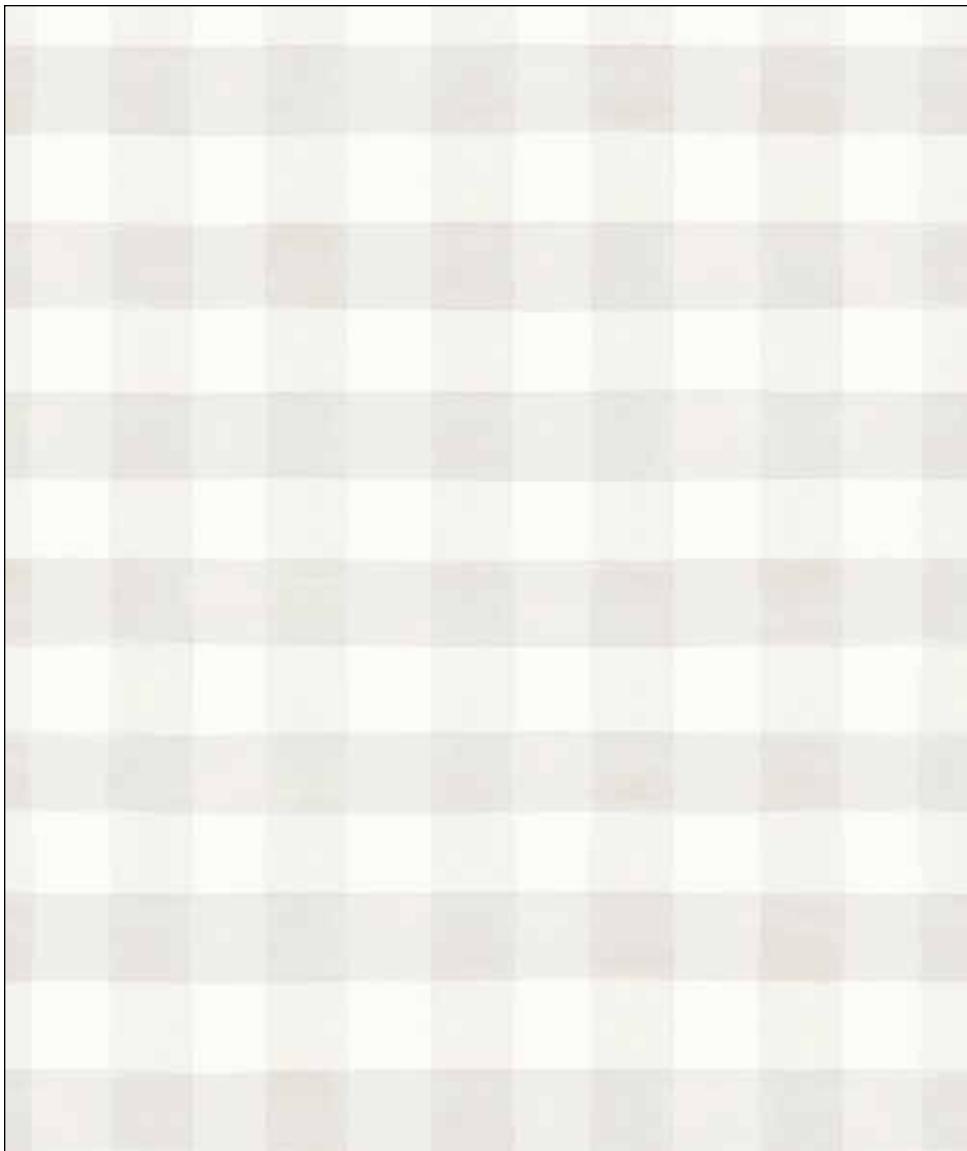
Style #FVIE
Pattern #5573 SB
100%



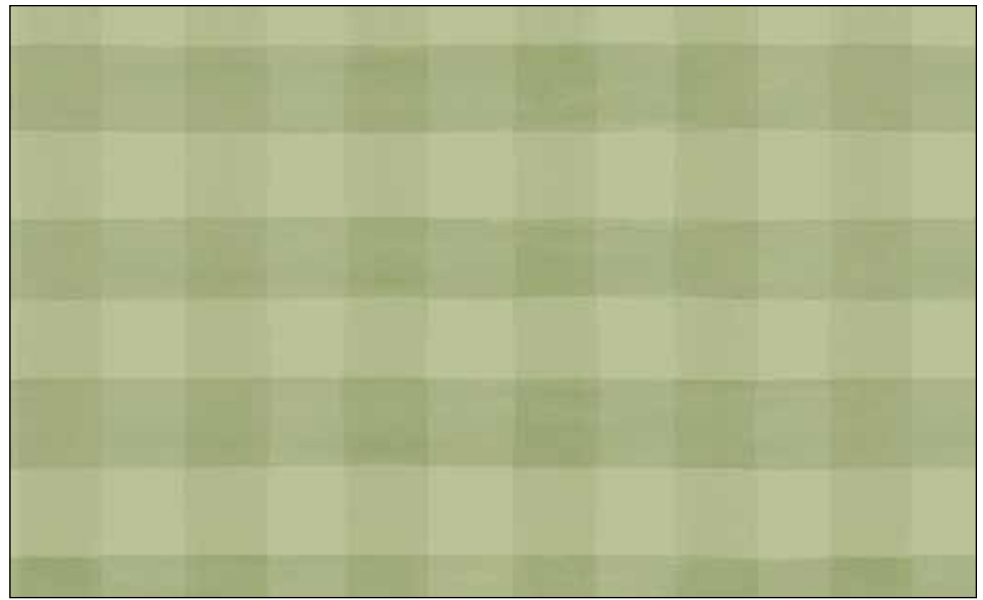
Style #FVIE
Pattern #5574 W
100%



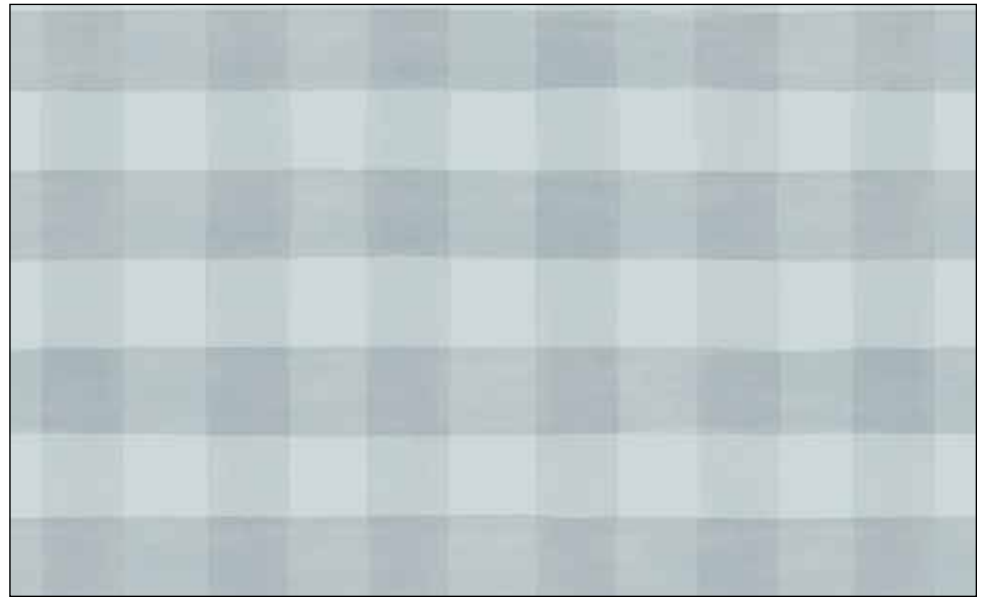
Style #FVIE
Pattern #5574 Z
100%



Style #FVIE
Pattern #5575 EW
100%

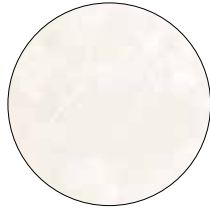


Style #FVIE
Pattern #5575 G
100%



Style #FVIE
Pattern #5575 SB
100%

BLENDER SUGGESTIONS:



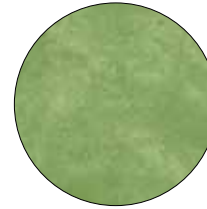
SUE7 303 EW



SUE7 303 LS



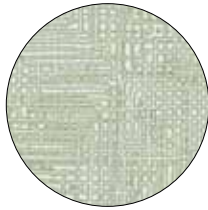
SUE7 303 S



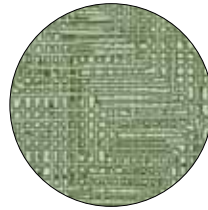
SUEM 300 M



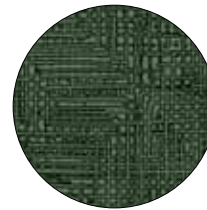
SUE7 303 HG



GRAS 5233 LG



GRAS 5233 G

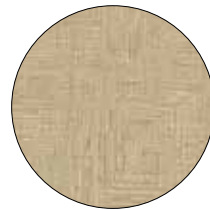


GRAS 5233 HG

108" SUGGESTIONS:



FWID 5113 WS



GROO 4973 NE



SERW 5349 LG



100% cotton ♦ Cold wash & dry ♦ 44"/45" ♦ Colors may vary due to printing process

Not Intended for Children's Sleepwear

PRECUTS AVAILABLE!

Fat Quarter Bundle (1 panel + 12 skus)..... 3 Minimum Order
5" x 5" (42 skus) 6 Minimum Order
10" x 10" (42 skus)..... 3 Minimum Order
2 1/2" strips (40 skus)..... 3 Minimum Order

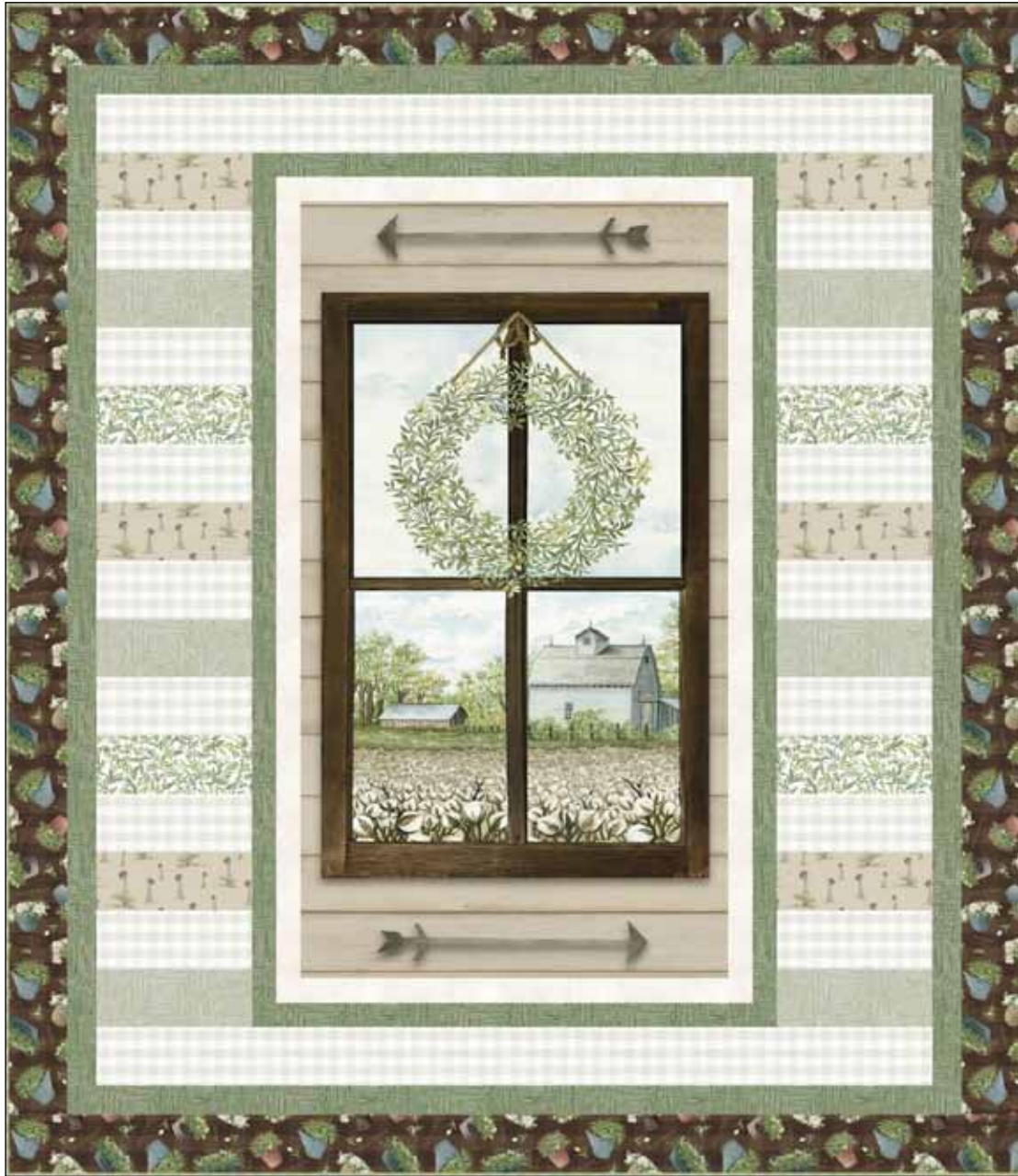


Fat Quarter



Other Bundles





Quilt size approximately: 52" x 60"

The View by Wendy Sheppard

Pattern available at:
www.pbtex.com when the fabric ships.

FABRIC REQUIREMENTS*

FVIE 5570 PA 1 panel
 SUE7 303 EW..... 1/4 yard
 GRAS 5233 G..... 5/8 yard
 GRAS 5233 LG 1/4 yard
 FVIE 5573 NE 1/4 yard
 FVIE 5572 Z 3/4 yard
 FVIE 5574 W..... 1/8 yard
 FVIE 5575 EW..... 3/4 yard
 FVIE 5575 G..... 1/2 yard
 (binding)

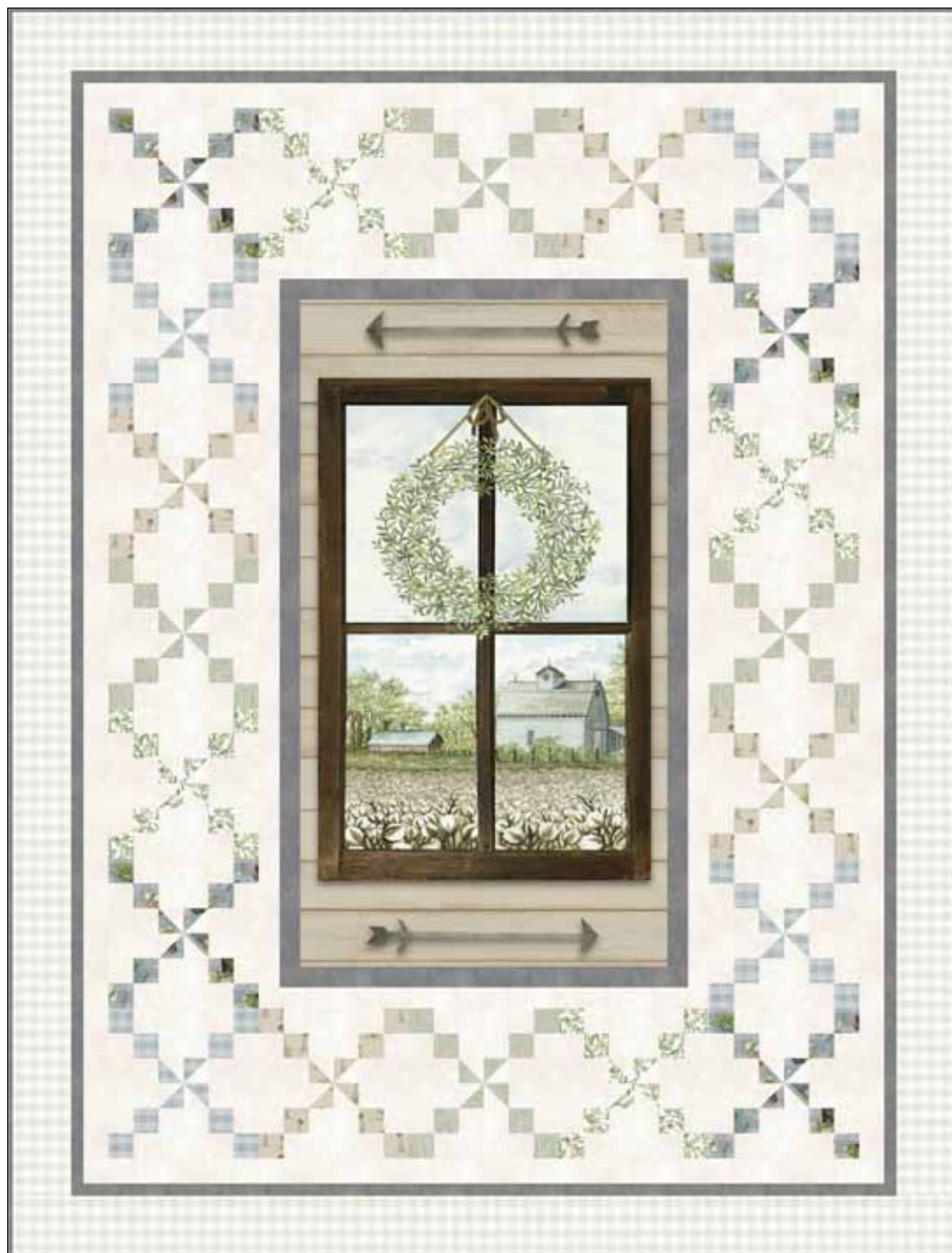
Total yardage 4 1/4 yards

*These yardages are estimates ONLY and may change on the pattern when it becomes available.

Kit Chart

Fabric (based on 15 yard bolts)	12	18	24
FVIE 5570 PA*	1	2	2
SUE7 303 EW	1	1	1
GRAS 5233 G	1	1	2
GRAS 5233 LG	1	1	1
FVIE 5573 NE	1	1	1
FVIE 5572 Z	1	1	2
FVIE 5574 W	1	1	1
FVIE 5575 EW	1	1	2
FVIE 5575 G	1	1	1

*10 yards = 15 panels



Quilt size approximately: 56 1/2" x 74 1/2"

A Day on the Farm by Wendy Sheppard

Pattern available at:
www.pbtex.com when the fabric ships.

FABRIC REQUIREMENTS*

FVIE 5570 PA1 panel
 SUE7 303 EW.....2 yard
 SUE7 303 S.....1 1/8 yards[†]
 GRAS 5233 LG1/4 yard
 FVIE 5572 SB.....1/4 yard
 FVIE 5573 NE.....1/4 yard
 FVIE 5574 W.....1/4 yard
 FVIE 5575 EW.....7/8 yard
 FVIE 5575 SB.....1/4 yard

Total yardage6 yards

[†]This includes binding

*These yardages are estimates ONLY and may change on the pattern when it becomes available.

Kit Chart

Fabric (based on 15 yard bolts)	12	18	24
FVIE 5570 PA*	1	2	2
SUE7 303 EW	2	3	4
SUE7 303 S	1	2	2
GRAS 5233 LG	1	1	1
FVIE 5572 SB	1	1	1
FVIE 5573 NE	1	1	1
FVIE 5574 W	1	1	1
FVIE 5575 EW	1	2	2
FVIE 5575 SB	1	1	1

*10 yards = 15 panels