

Farah Flowers

Quilt Design by Debby Kratovil



Quilt size: approximately 60" square



Featuring fabrics from
Farah Flowers by Crystal Designs for P&B Textiles



P&B Textiles • pbtex.com • 800-351-9087 • 208 Clock Tower Square, Portsmouth, RI 02871

Farah Flowers

Fabric collection by Crystal Designs for P&B Textiles

Quilt designed by Debby Kratovil

Skill level: Confident Beginner • Finished Quilt Size: approximately 60" square

Quilt Yardages:

Fabric A: FAFL 4186 MU	5/8 yard
Fabric B: FAFL 4187 MU	5/8 yard
Fabric C: FAFL 4189 K	1 3/8 yards
Fabric D: FAFL 4190 G	1/2 yard
Fabric E: FAFL 4191 MU	7/8 yard
Fabric F: FAFL 4192 MU	Fat Quarter
Fabric G: FAFL 4193 R	1/2 yard
Fabric H: SUE6 302 KS	1 3/8 yards
Backing: FAFL 4187 MU suggested	3 3/4 yards
Batting	68" x 68"

Additional supplies: Template plastic, matching thread for ring wedges, fusible web (approximately 1 3/4 yards of 20" WOF).

Cutting Instructions:

Please read all instructions carefully before beginning. Strips are cut across the width of fabric (perpendicular to selvages) unless otherwise stated. All seams are sewn with a 1/4" seam unless otherwise stated. Label all pieces.

From Fabric A:

1. Cut two 8 1/2" x 24 1/2" rectangles.

From Fabric B:

1. Cut seven 2 1/2" strips for binding.

From Fabric C:

1. Cut two 17 1/4" squares. Cut each on the diagonal twice to make eight quarter square triangles.
2. Cut two 8 1/2" x 16 1/2" rectangles.
3. Cut two 8 1/2" x 24 1/2" rectangles.

From Fabric D:

1. Cut six 5 3/4" x 11 3/4" rectangles.

From Fabric E:

1. Cut two 17 1/4" squares. Cut each on the diagonal twice to make eight quarter square triangles.
2. Cut two 8 1/2" x 16 1/2" rectangles.

From Fabric F:

1. Cut two 5 3/4" x 11 3/4" rectangles.

From Fabric G:

1. Cut six 5 3/4" x 11 3/4" rectangles.

From Fabric H:

1. Cut six 6 1/2" strips. Pieced together end-to-end. Press seams open. Subcut two 6 1/2" x 48 1/2" strips and two 6 1/2" x 60 1/2" strips.

Template Instructions:

1. Transfer template markings to fourteen 5 3/4" x 11 3/4" rectangles from fusible web. This is raw edge appliqué and there are no turn under seams. Apply to the wrong side of Fabric D, F and G 5 3/4" x 11 3/4" rectangles according to directions. Cut out Double Wedding Ring (DWR) templates and set aside.

Piecing Instructions:

1. Sew two C and E quarter square triangles together as shown (Figure 1). Press. Make four Hourglass blocks. They should measure 16 1/2" square.

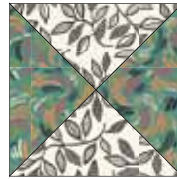


Figure 1 **Make 4.**

2. Sew the four Hourglass blocks together as shown (Figure 2). Press. Quilt center should measure 32 1/2" square.



Figure 2

3. Sew one 8 1/2" x 16 1/2" C rectangle to one 8 1/2" x 16 1/2" E rectangle on the short side. Press. Make two.
4. Sew CE strip to each side of quilt center as shown (Figure 3). Press.
5. Sew one 8 1/2" x 24 1/2" A rectangle to one 8 1/2" x 24 1/2" C rectangle on the short side. Press. Make two.
6. Sew AC strip to top and bottom of quilt center as shown (Figure 3). Press.



- ### *Finishing:*

-
- A quilt square featuring a central floral motif with red and green leaves on a white background with grey foliage. The square is surrounded by a border with a repeating pattern of small flowers and leaves.

P&B Textiles • pbtex.com • 800-351-9087 • 208 Clock Tower Square, Portsmouth, RI 02871

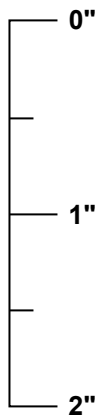
Double Ring Template

100 %

Make 6 Fabric D.

Make 2 Fabric F.

Make 6 Fabric G.



Scale Check for
pdf files. When
you print these
templates, this
ruler should
measure 2 inches
long. If it does not,
change, "page scaling"
to "none" in the
print dialog box.

Farah Flowers

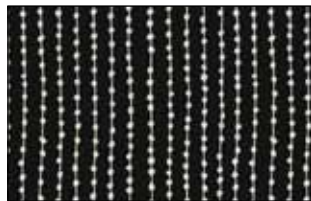
Fabric Collection
by Crystal Designs
for P&B Textiles



FAFL 4186 MU*† Fabric A



FAFL 4187 MU* Fabric B



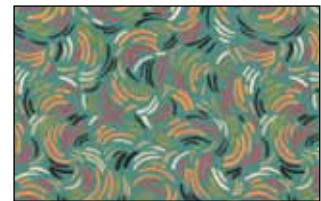
FAFL 4188 K



FAFL 4189 K* Fabric C



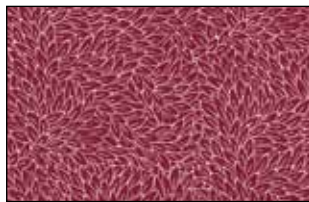
FAFL 4190 G* Fabric D



FAFL 4191 MU* Fabric E



FAFL 4192 MU* Fabric F



FAFL 4193 R* Fabric G



SUE6 302 KS* Fabric H