

# Desert Blooms

Quilt Design by Gina Gempesaw



Quilt size: approximately 48 1/2" x 56"

Featuring fabrics from  
*Desert Blooms by Laura Marshall*



P&B Textiles • pbtex.com • 800-351-9087 • 208 Clock Tower Square, Portsmouth, RI 02871

# Desert Blooms

Fabric collection by Laura Marshall

Quilt designed by Gina Gempesaw

Skill level: Confident Beginner • Finished Quilt Size: approximately 48 1/2" x 56"

## Quilt Yardages:

Fabric A: <b>DBLO 5209 PA</b> .....	1 panel
Fabric B: <b>DBLO 5214 CC</b> .....	3/8 yard
Fabric C: <b>DBLO 5210 W</b> .....	3/4 yard
Fabric D: <b>DBLO 5218 DST</b> .....	3/8 yard
Fabric E: <b>DBLO 5212 MU</b> .....	1/2 yard
Backing: <b>DBLO 5214 E suggested</b> .....	3 1/4 yards
Batting .....	57" x 64"

## Cutting Instructions:

*Please read all instructions carefully before beginning. Strips are cut across the width of fabric (perpendicular to selvages) unless otherwise stated. All seams are sewn with a 1/4" seam unless otherwise stated. Label all pieces.*

### From Fabric A:

1. Cut one 35" x 42 1/2" rectangle, centering image. (A)

### From Fabric B:

1. Cut five 2" strips. Sew strips together into one long strip.
  - a. Cut two 2" x 35" strips for the First Border (B1).
  - b. Cut two 2" x 45 1/2" strips for the First Border (B2).

### From Fabric C:

1. Cut five 4 1/2" strips. Sew strips together into one long strip.
  - a. Cut two 4 1/2" x 38" strips for the Second Border (C1).
  - b. Cut two 4 1/2" x 53 1/2" strips for the Second Border (C2).

### From Fabric D:

1. Cut five 2" strips. Sew strips together into one long strip.
  - a. Cut two 2" x 46" strips for the Third Border (D1).
  - b. Cut two 2" x 56 1/2" strips for the Third Border (D2).

### From Fabric E:

1. Cut six 2 1/4" strips. (Binding)

**Note:** *If desired, cut binding on the bias to get the diagonal stripe effect (see quilt image).*

## Assembly Instructions: Refer to Quilt Diagram.

### A. First Border

1. Sew one B1 strip onto opposite sides of the panel. Press.
2. Sew one B2 strip to the top and bottom of the panel. Press. The quilt should measure 38" x 45 1/2".

### B. Second Border

1. Sew one C1 strip onto opposite sides of the quilt. Press.
2. Sew one C2 strip onto the top and bottom of the quilt. Press. The quilt should measure 46" x 53 1/2".

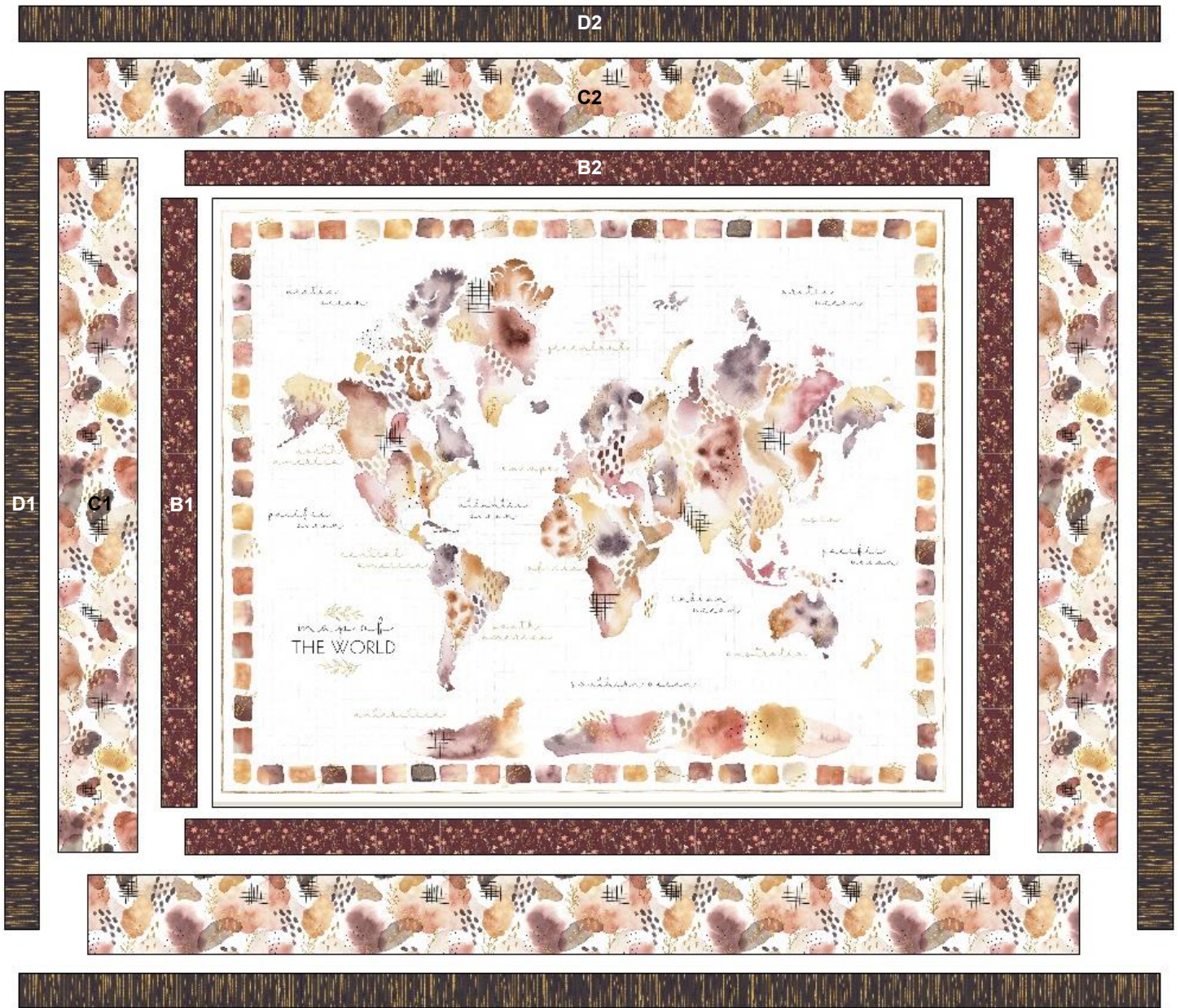
### C. Third Border

1. Sew one D1 strip onto opposite side of the quilt. Press.
2. Sew one D2 strip onto the top and bottom of the quilt. Press. The quilt should measure 49" x 56 1/2" ..

## Finishing:

1. Prepare backing with vertical seams. Press seams open. Trim backing to 57" x 64".
2. Layer quilt, batting, and backing. Baste layers together.
3. Quilt as desired.
4. Trim layers even with quilt top, squaring corners.
5. Join six 2 1/4" E binding strips with diagonal seams. Press seams open. Attach binding using your favorite method.
6. Make a label and sew to the back of the quilt.





*Quilt Diagram*



# Desert Blooms

Fabric Collection by Laura Marshall



DBLO 5209 PA\*



DBLO 5210 W\*



DBLO 5210 CC



DBLO 5211 W



DBLO 5212 MU\*



DBLO 5213 LC



DBLO 5214 CC\*



DBLO 5214 E†



DBLO 5215 C



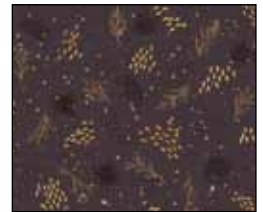
DBLO 5215 LP



DBLO 5216 S



DBLO 5216 W



DBLO 5217 DST



DBLO 5218 DST\*



DBLO 5218 W



P&B Textiles • pbtex.com • 800-351-9087 • 208 Clock Tower Square, Portsmouth, RI 02871

\*Fabrics used in quilt.

†Backing