

# Christmas Chimes

Quilt Design by Heidi Pridemore



Quilt size: approximately 51.5" square

Featuring fabrics from Christmas Chimes collection  
by Sandy Lynam Clough™ for P&B Textiles



P&B Textiles • pbtex.com • 800-351-9087 • 45 Washington Street, Pawtucket, RI 02860

# Christmas Chimes

Fabric collection by Sandy Lynam Clough™ for P&B Textiles

Original quilt design by Heidi Pridemore

Skill level: Confident Beginner • Finished Quilt Size: approximately 51 1/2" square.

## Yardages:

Fabric A: <b>CHIM 525 LS</b> .....	3/4 yard
Fabric B: <b>CHIM 527 AU</b> .....	1/2 yard
Fabric C: <b>CHIM 527 G</b> .....	7/8 yard
Fabric D: <b>CHIM 527 R</b> .....	5/8 yard
Fabric E: <b>CHIM 529 G</b> .....	1/2 yard
Fabric F: <b>CHIM 529 R</b> .....	1/3 yard
Fabric G: <b>CHIM 529 Y</b> .....	7/8 yard
Backing: <b>CHIM 528 LS</b> .....	3 1/2 yards
Batting .....	60" x 60"

## Cutting Instructions:

*Please read all instructions carefully before beginning. Strips are cut across the width of fabric unless otherwise stated. All seams are sewn with a 1/4" seam unless otherwise stated.*

### From Fabric A (CHIM 525 LS):

1. Cut four 11 1/2" squares.

### From Fabric B (CHIM 527 AU):

1. Cut four 3 1/2" strips. Sub cut:
  - a. four 3 1/2" x 11" rectangles.
  - b. one 3 1/2" x 9 1/2" rectangle.
  - c. eight 3 1/2" x 8 1/2" rectangles.
  - d. two 3 1/2" x 6 1/2" rectangles.
  - e. two 3 1/2" squares.

### From Fabric C (CHIM 527 G):

1. Cut four 6 1/2" strips.

### From Fabric D (CHIM 527 R):

1. Cut six 2 1/4" strips for binding.

### From Fabric E (CHIM 529 G):

1. Cut five 2 1/2" strips for border.

### From Fabric F (CHIM 529 R):

1. Cut two 3 1/2" strips. Sub cut: fifteen 3 1/2" squares.

### From Fabric G (CHIM 529 Y):

1. Cut two 2" strips. Sub-cut six 2" x 11 1/2" rectangles.
2. Cut three 2" x 27" strips for border.
3. Cut five 2 1/4" strips for border.

## Piecing Instructions: (Refer to Quilt Diagram)

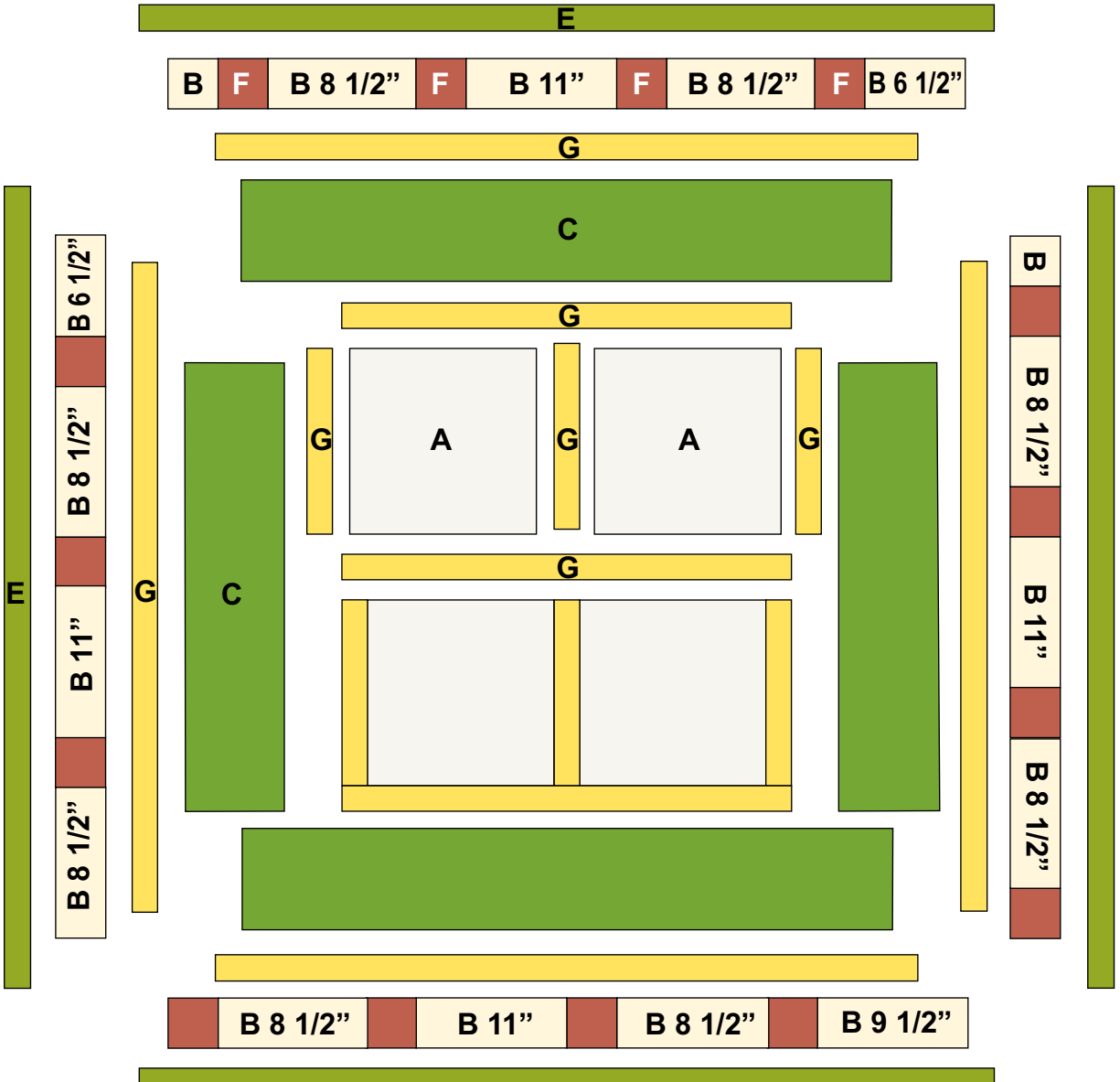
1. Sew two 11 1/2" A squares and three 2" x 11 1/2" G strips together to make one row. Press seams toward the strips. Repeat to make a second row.
2. Sew the rows alternately together with three 2" x 27" G strips to complete the 27" x 27" center unit. Press seams toward the strips.
3. Measure the sides of the center unit. Trim two C strips and sew to the sides. Press seams toward the strips. Measure top and bottom. Trim two remaining C strips and sew to top and bottom. Press seams toward the strips.
4. Repeat step 3 with 2 1/4" G strips to complete the 42" x 42" framed quilt center.
5. Referring to the Quilt Diagram for sizes of B rectangles, sew F squares and B rectangles together to make the 3 1/2" x 42" left border. Press all seams toward the F squares. Repeat to make the right border using a B square with F squares and B rectangles. Sew the borders to the sides of the framed quilt center. Press seams toward the framed quilt center.

6. Repeat to make the 3 1/2" x 48" top and bottom borders. Stitch to the top and bottom of the framed quilt center. Press seams toward the framed quilt center.

7. Repeat step 3 with 2 1/2" E strips to complete the quilt top.

## Finishing:

1. Cut two 60" backing strips. Join on the long edges and trim to make a 60" square with a vertical seam. Press seam open.
2. Layer backing, batting and quilt top. Baste layers together.
3. Quilt as desired.
4. Trim layers even with top.
5. Join six 2 1/4" D binding strips with diagonal seams. Press seams open. Press strip in half lengthwise with wrong sides together to make double-fold binding. Sew binding to quilt using your favorite method.
6. Make a label and sew to back of the quilt.



*Quilt Diagram*

# Christmas Chimes

Fabric Collection by  
Sandy Lynam Clough™ for P&B Textiles



CHIM 525 LS\*



CHIM 526 RG



CHIM 528 LS†



CHIM 527 AU\*



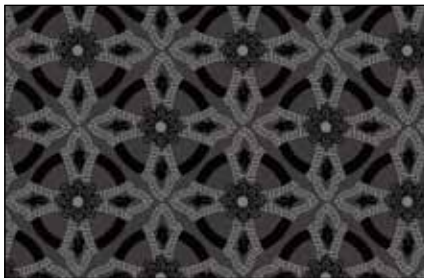
CHIM 527 G\*



CHIM 527 R\*



CHIM 529 G\*



CHIM 529 K



CHIM 529 R\*



CHIM 529 W



CHIM 529 Y\*

\*Fabrics used in quilt.

† Backing fabric.