

Bohemian Garden

by P&B Textiles





Style #BGAR
Pattern #5319 N
Reduced



Style #BGAR
Pattern #5319 N
100%



Style #BGAR
Pattern #5319 W
100%



Style #BGAR
Pattern #5320 W
100%



Style #BGAR

Pattern #5321 BW

Reduced; 15 flower borders across the width; 2 3/8" with 1/2" between



Style #BGAR
Pattern #5321 BW
100%



Style #BGAR
Pattern #5322 CC
100%



Style #BGAR
Pattern #5322 W
100%



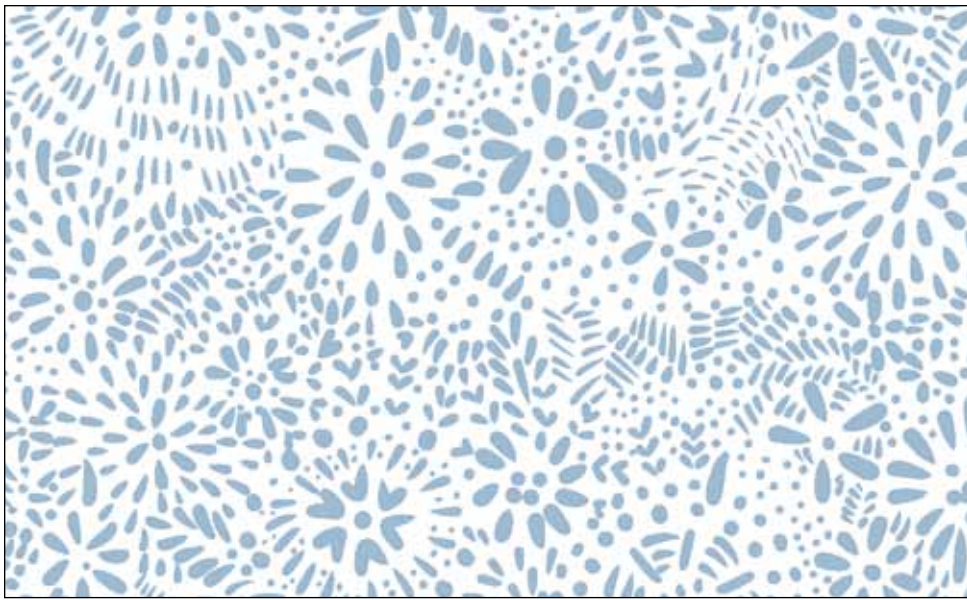
Style #BGAR
Pattern #5323 B
100%



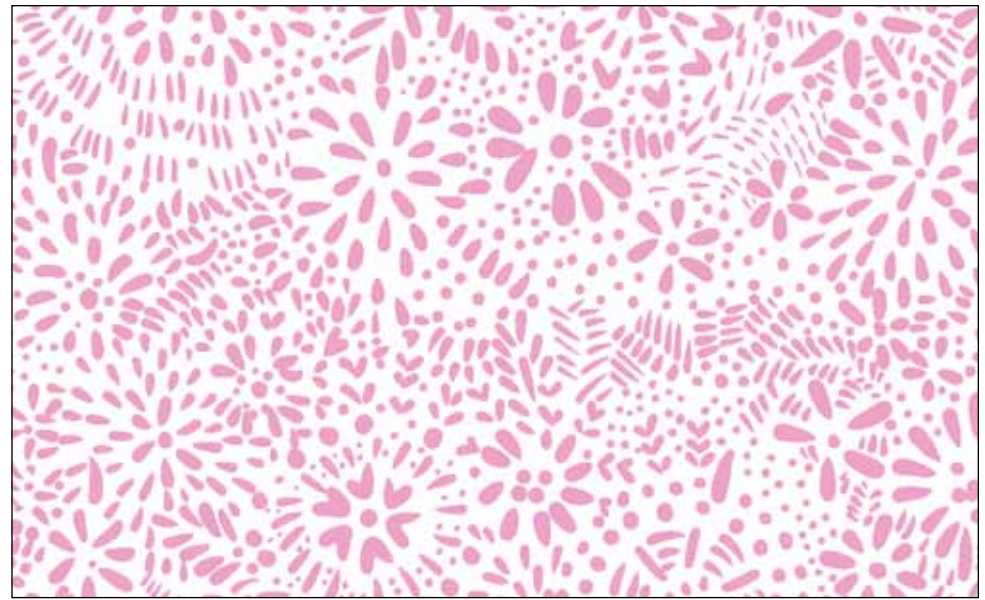
Style #BGAR
Pattern #5323 C
100%



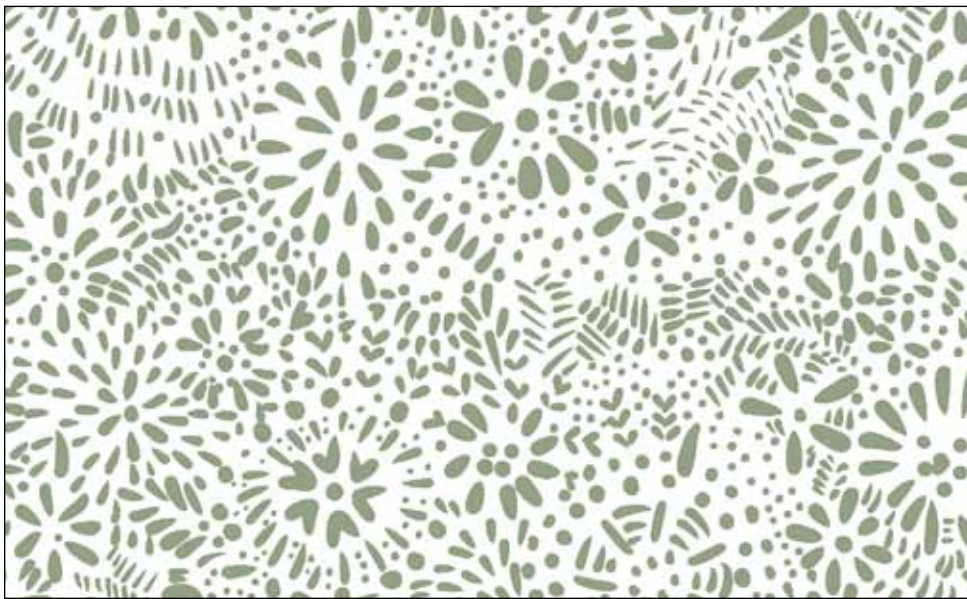
Style #BGAR
Pattern #5323 G
100%



Style #BGAR
Pattern #5324 WB
100%



Style #BGAR
Pattern #5324 WC
100%



Style #BGAR
Pattern #5324 WG
100%



Style #BGAR
Pattern #5324 WU
100%

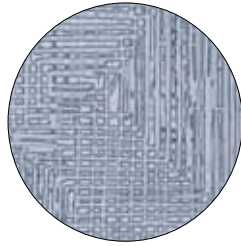
PRECUTS AVAILABLE!

Fat Quarter Bundle (13 skus).....	3 Minimum Order
5" x 5" (42 skus)	6 Minimum Order
10" x 10" (42 skus).....	3 Minimum Order
2 1/2" strips (40 skus).....	3 Minimum Order

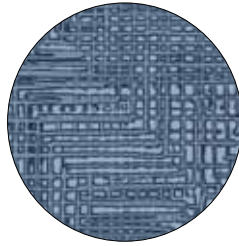


All Bundles

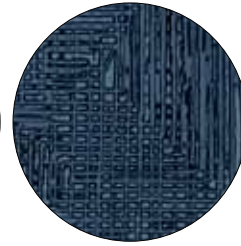
BLENDER SUGGESTIONS:



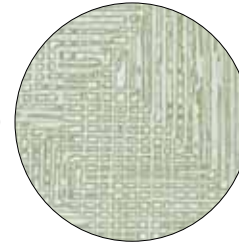
GRAS 5233 LB



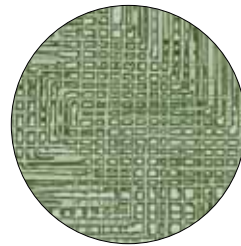
GRAS 5233 B



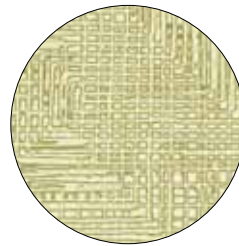
GRAS 5233 N



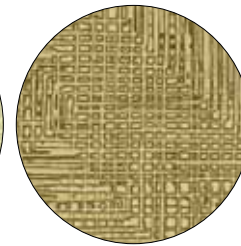
GRAS 5233 LG



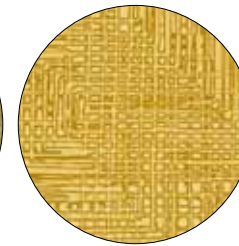
GRAS 5233 G



GRAS 5233 EA



GRAS 5233 YA



GRAS 5233 U



100% cotton ♦ Cold wash & dry ♦ 44"/45" ♦ Colors may vary due to printing process

Not Intended for Children's Sleepwear





Quilt size approximately: 62" x 80"

Quilt design by Wendy Sheppard

Pattern available at:
www.pbtex.com when the fabric ships.

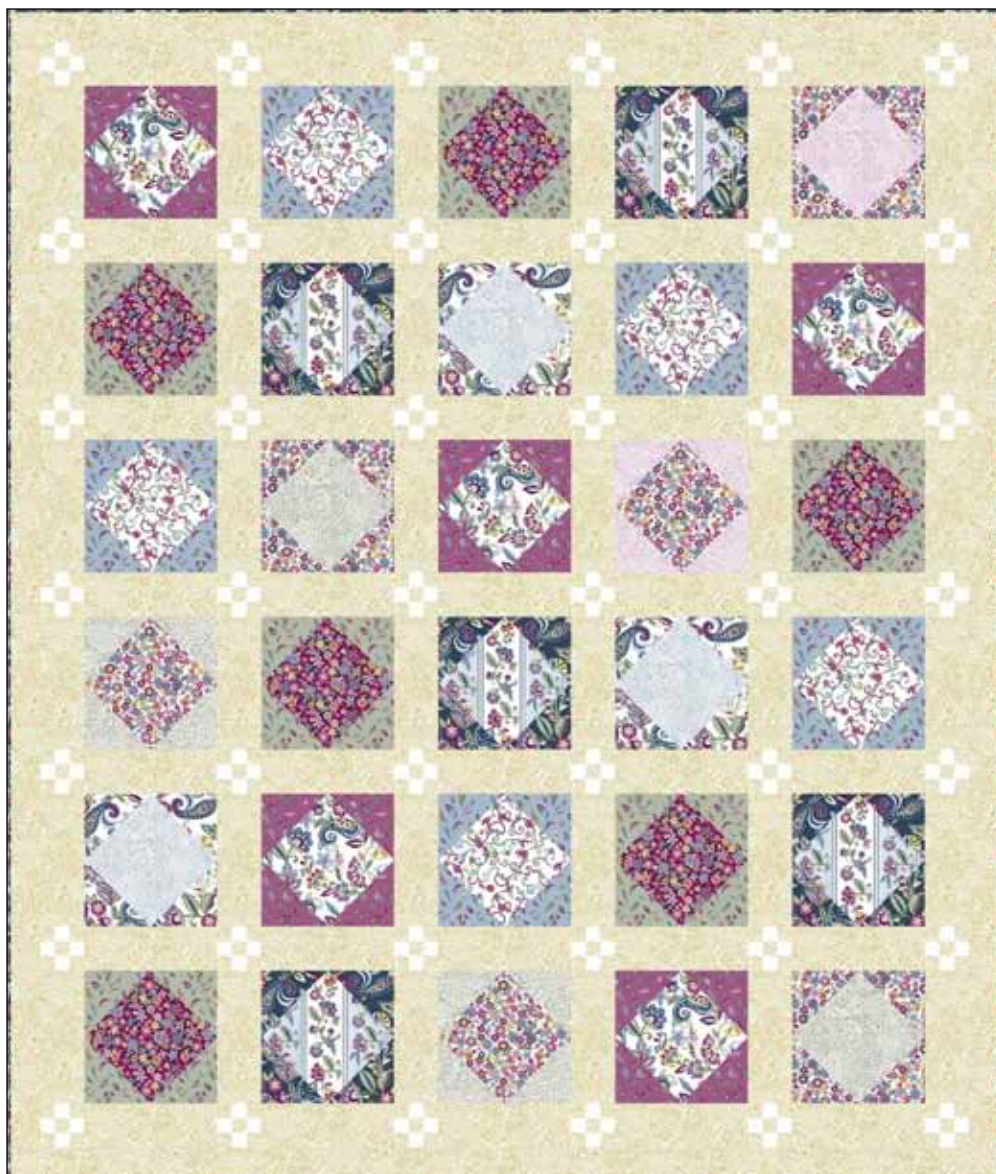
FABRIC REQUIREMENTS*

RAM6 716 W.....	2 1/2 yards	BGAR 5323 G	Fat Quarter
BGAR 5319 N.....	Fat Quarter	BGAR 5324 WB.....	1 yard
BGAR 5319 W	7/8 yard	BGAR 5324 WC.....	7/8 yard
BGAR 5320 W.....	3/8 yard	BGAR 5324 WG	1/8 yard
BGAR 5322 CC	Fat Quarter	BGAR 5324 WU	1/8 yard
BGAR 5322 W.....	Fat Quarter		
BGAR 5323 C.....	Fat Quarter	Total yardage	7 3/8 yards
BGAR 5323 B.....	Fat Quarter		

**These yardages are estimates ONLY and may change on the pattern when it becomes available.*

Kit Chart

Fabric (based on 15 yard bolts)	12	18	24
RAM6 716 W	2	3	4
BGAR 5319 N	1	1	1
BGAR 5319 W	1	1	1
BGAR 5320 W	1	1	2
BGAR 5322 CC	1	1	1
BGAR 5322 W	1	1	1
BGAR 5323 C	1	1	1
BGAR 5323 B	1	1	1
BGAR 5323 G	1	1	1
BGAR 5324 WB	1	2	2
BGAR 5324 WC	1	2	2
BGAR 5324 WG	1	1	1
BGAR 5324 WU	1	1	1



Quilt size approximately: 67" x 79"

Quilt design by Wendy Sheppard

Pattern available at:
www.pbtex.com when the fabric ships.

FABRIC REQUIREMENTS*

RAM6 716 W.....	3/8 yard	BGAR 5323 C.....	1/2 yard
BGAR 5319 N.....	1 1/8 yards	BGAR 5323 G	5/8 yard
BGAR 5319 W	5/8 yard	BGAR 5324 WB.....	3/8 yard
BGAR 5320 W.....	5/8 yard	BGAR 5324 WC.....	3/8 yard
BGAR 5321 BW.....	5/8 yard	BGAR 5324 WG	1/2 yard
BGAR 5322 CC	5/8 yard	BGAR 5324 WU	3 yards
BGAR 5322 W.....	5/8 yard		
BGAR 5323 B.....	1/2 yard	Total yardage	10 1/2 yards

*These yardages are estimates ONLY and may change on the pattern when it becomes available.

Kit Chart

Fabric (based on 15 yard bolts)	12	18	24
RAM6 716 W	1	1	1
BGAR 5319 N	1	2	2
BGAR 5319 W	1	1	2
BGAR 5320 W	1	1	2
BGAR 5321 BW	1	1	2
BGAR 5322 CC	1	1	2
BGAR 5322 W	1	1	2
BGAR 5323 B	1	1	1
BGAR 5323 C	1	1	1
BGAR 5323 G	1	1	2
BGAR 5324 WB	1	1	1
BGAR 5324 WC	1	1	1
BGAR 5324 WG	1	1	1
BGAR 5324 WU	3	4	5



Bag size approximately: 20" tall x 24" wide x 12" deep

Giant Poppins Bag by Aunties Two #AT649

Pattern for Purchase available at:
Checker, Brewer or EE Schenck

FABRIC REQUIREMENTS*

BGAR 5321 BW..... 2 yards (outside)
 BGAR 5323 B..... 1 yard (inside)
 BGAR 5322 CC 1 1/2 yards (finishing)
 Total yardage 4 1/2 yards

Kit Chart

Fabric (based on 15 yard bolts)	12	18	24
BGAR 5321 BW	2	3	4
BGAR 5323 B	1	2	2
BGAR 5322 CC	2	2	3