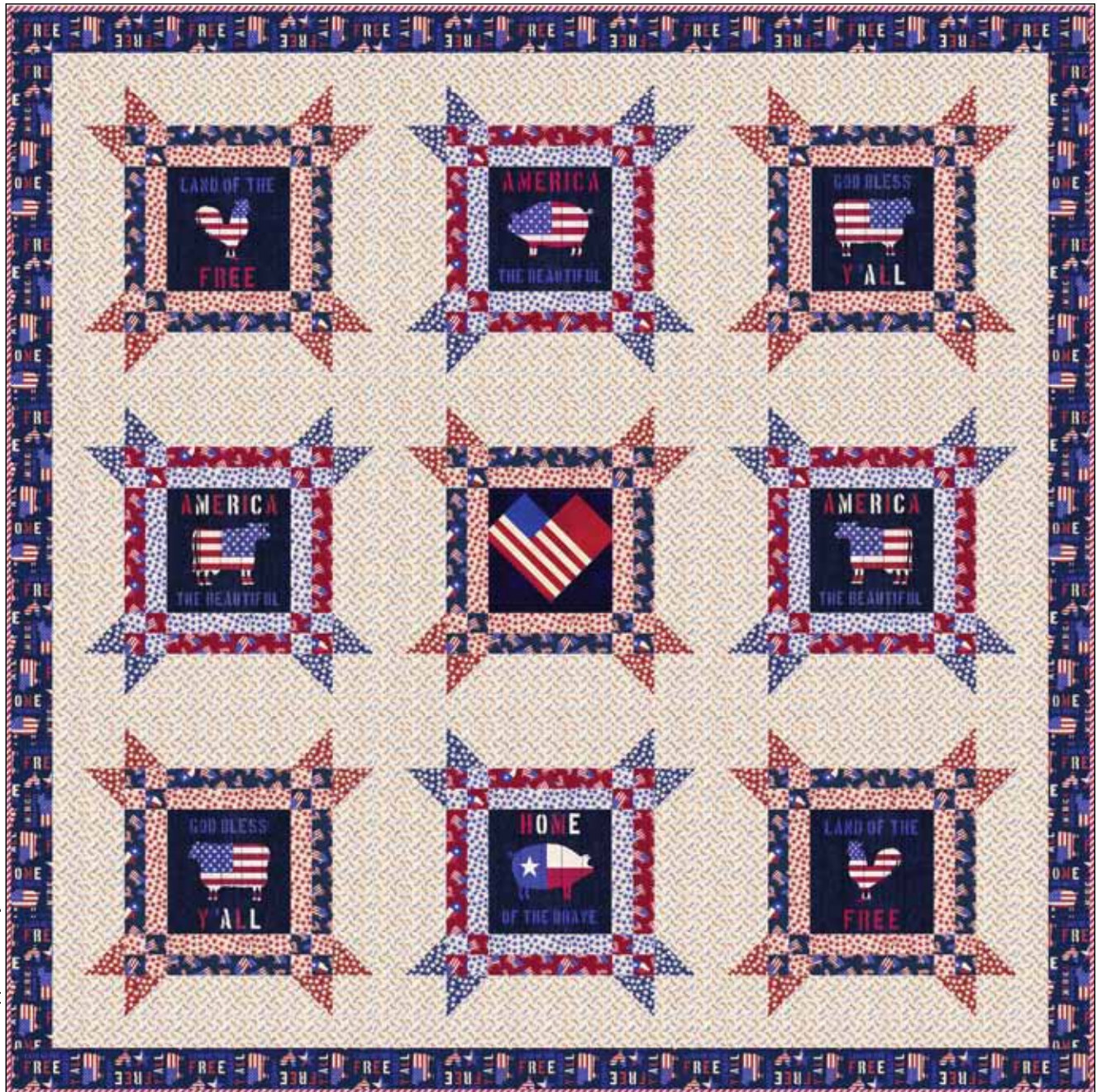


American Farm

Quilt Design by Stacey Day



Quilt size: approximately 78" x 78"

Featuring fabrics from American Farm
by Michael Mullan for P&B Textiles



P&B Textiles • pbtex.com • 800-351-9087 • 208 Clock Tower Square, Portsmouth, RI 02871

American Farm

Fabric collection by Michael Mullan for P&B Textiles

Heartland quilt design by Stacey Day

Skill level: Confident Beginner • Finished Quilt Size: approx. 78" x 78"

Quilt Yardages:

| | | | |
|-----------|------------------------------|-------|------------|
| Fabric A: | AFAR 4499 MU | | 1 panel |
| Fabric B: | AFAR 4500 MU | | 1 yard |
| Fabric C: | AFAR 4501 R | | 7/8 yard |
| Fabric D: | AFAR 4502 LB | | 1/2 yard |
| Fabric E: | AFAR 4502 LR | | 1/2 yard |
| Fabric F: | AFAR 4502 N | | 1/3 yard |
| Fabric G: | AFAR 4502 R | | 1/3 yard |
| Fabric H: | AFAR 4503 MU | | 3 yards |
| Fabric I: | AFAR 4505 N | | 1/2 yard |
| Fabric J: | AFAR 4505 R | | 1/2 yard |
| Fabric K: | SUED 300 N | | Fat Eighth |
| Fabric L: | SUED 300 E | | Fat Eighth |
| Fabric M: | SUE6 302 R | | Fat Eighth |
| Fabric N: | SUEB 300 BB | | Fat Eighth |
| Backing: | AFAR 4504 R suggested | | 5 yards |
| Batting | | | 86" x 86" |

Cutting Instructions:

Please read all instructions carefully before beginning. Strips are cut across the width of fabric (perpendicular to selvages) unless otherwise stated. All seams are sewn with a 1/4" seam unless otherwise stated. Label all pieces. LOF = length of fabric.

From Fabric A:

1. Cut eight panel blocks at 9 1/2" square centering design within each square.

From Fabric B:

1. Cut eight 3 1/2" strips. Sew together end to end with diagonal seams. Press seams open. From this pieced strip, cut two 3 1/2" x 72 1/2" strips and two 3 1/2" x 78 1/2" strips.

From Fabric C:

1. Cut thirteen 2 1/4" x WOB (width of bias) strips for binding. Sew strips together end to end to make a bias strip at least 340" long.

From Fabric D:

1. Cut six 2" strips.

From Fabric E:

1. Cut seven 2" strips.

From Fabric F:

1. Cut two 3 7/8" strips; cut sixteen 3 7/8" squares. Sub cut once on the diagonal into thirty-two triangles.

From Fabric G:

1. Cut two 3 7/8" strips; cut twenty 3 7/8" squares. Sub cut once on the diagonal into forty triangles.

From Fabric H:

1. Cut four 3 7/8" strips; cut thirty-six 3 7/8" squares. Sub cut once on the diagonal into seventy-two triangles.
2. Cut thirteen 3 1/2" strips; cut thirty-six 3 1/2" squares and thirty-six 3 1/2" x 9 1/2" rectangles.
3. Cut fourteen 2 3/4" strips. Sew strips together end to end with diagonal seams. Press seams open. From this pieced strip, cut four 72 1/2" strips and twelve 2 3/4" x 21 1/2" strips.

From Fabric I:

1. Cut seven 2" strips.

From Fabric J:

1. Cut six 2" strips.

From Fabric K:

1. Cut one 6 1/8" square; cut once on the diagonal into two triangles.
2. Cut one 5 3/4" square; cut once on each diagonal into four triangles.

From Fabric L:

1. Cut two 1" x 7 1/2" rectangles and two 1" x 5" rectangles

From Fabric M:

1. Cut two 1" x 7 1/2" rectangles, two 1" x 5" rectangles and one 4" x 5 1/2" rectangle.

From Fabric N:

1. Cut one 2 3/4" x 3 1/4" rectangle.

Piecing Instructions:

1. Using your preferred method of paper piecing, make the Foundation pieces using the fabrics listed on each piece. Remove the papers. Sew together in order (A-B-C), press. Sew two 5 3/4" K triangles to the top corners, and two 6 1/8" K triangles to the bottom of the block as shown. Trim and square to 9 1/2" x 9 1/2", set aside with the 9 1/2" A squares (Figure 1).

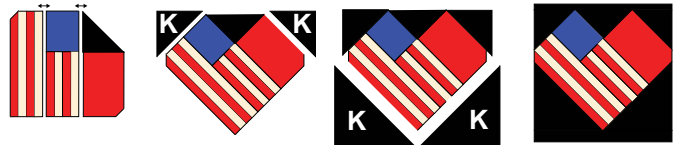


Figure 1

Center Block

2. Sew 2" E and I strips together in pairs. Sew 2" D and J strips together in pairs. From the E/I strips cut twenty 3 1/2" x 9 1/2" rectangles and forty 2" x 3 1/2" rectangles. From the D/J strips cut sixteen 3 1/2" x 9 1/2" rectangles and thirty-two 2" x 3 1/2" rectangles.
3. Sew the E/I 2" x 3 1/2" rectangles together as shown to make twenty A Units. Set aside. Sew the D/J 2" x 3 1/2" rectangles together to make sixteen B Units. Set aside (Figure 2).



Make 20 A Units.

Make 16 B Units.

Figure 2

4. Sew one $3\frac{7}{8}$ " H triangle to one $3\frac{7}{8}$ " G triangle to make forty C Units. Sew one $3\frac{7}{8}$ " H triangle to one $3\frac{7}{8}$ " F triangle to make thirty-two D Units (Figure 3).



Figure 3

5. Sew one A Unit, two C Units, and one $3\frac{1}{2}$ " H square together to make an E Unit. Make twenty E Units (Figure 4).
 6. Sew one B Unit, two D Units, and one $3\frac{1}{2}$ " H square together to make an F Unit. Make sixteen F Units (Figure 4).

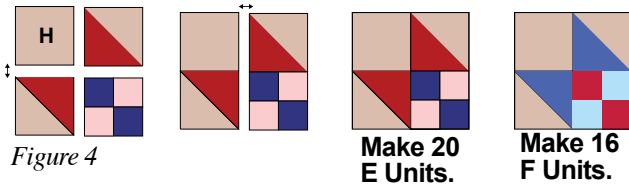


Figure 4

7. Sew one $3\frac{1}{2}$ " x $9\frac{1}{2}$ " H rectangle to the top of each E/I and D/J $3\frac{1}{2}$ " x $9\frac{1}{2}$ " rectangle. Set aside as the G and H Units (Figure 5).



Figure 5

8. Sew four E Units and four G Units to one $9\frac{1}{2}$ " A square containing either the rooster or bison motif to make an A Block. Repeat with each bison and rooster motif to make four A Blocks (Figure 6). Repeat once with Center Block. Trim and square to $21\frac{1}{2}$ " x $21\frac{1}{2}$ ".

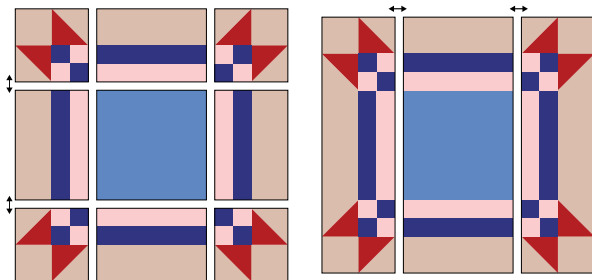
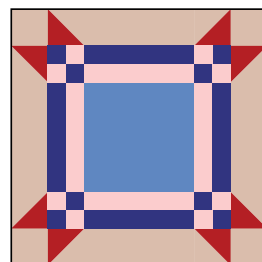
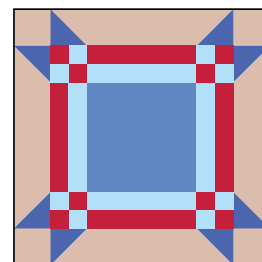


Figure 6



Make 4 A Blocks and 1 Paper Pieced Center Block.

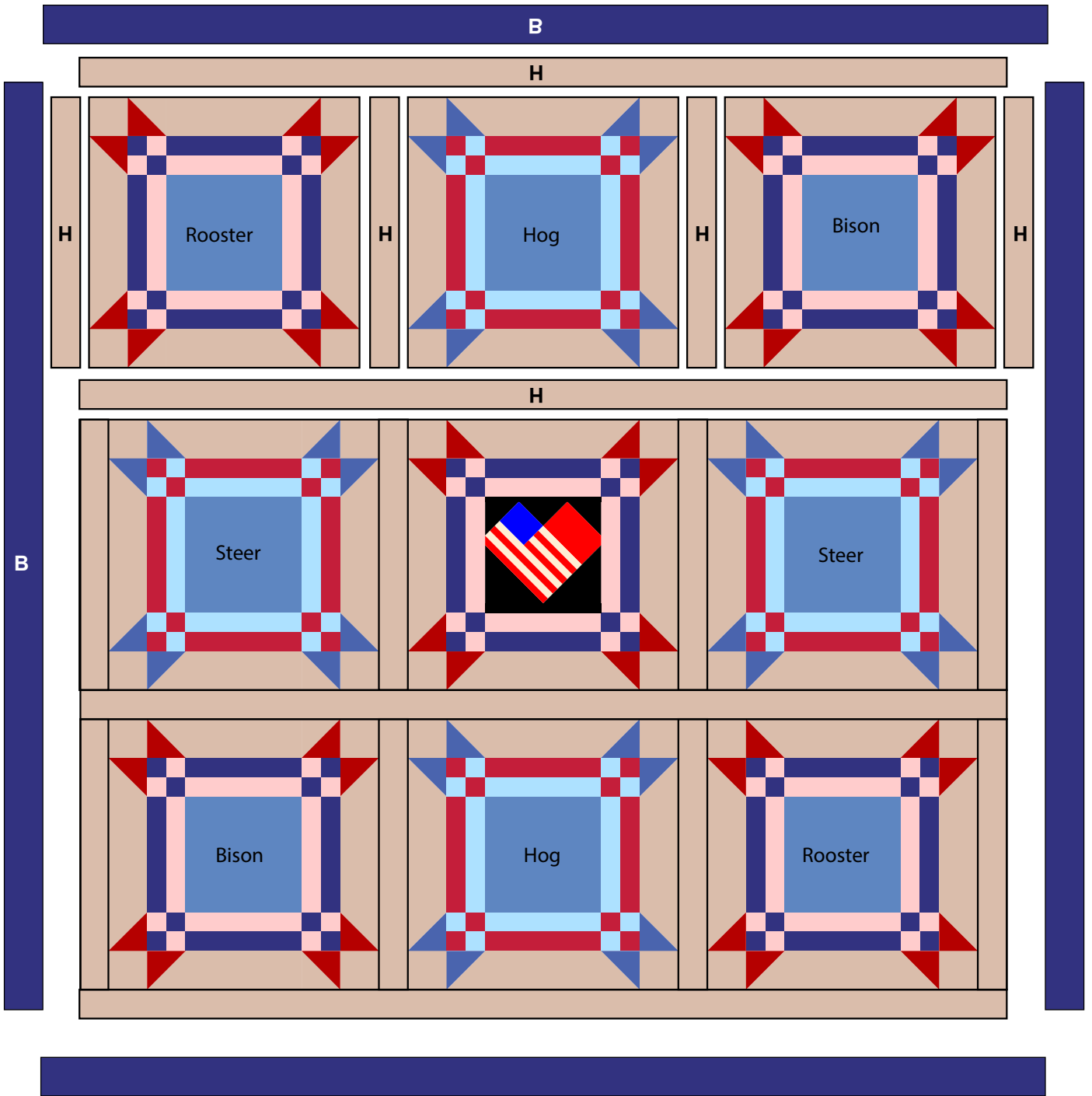


Make 4 B Blocks.

9. Sew four F Units and four H Units to one $9\frac{1}{2}$ " A square containing either the hog or steer motif to make an A Block. Repeat with each hog and steer motif to make four A Blocks. Trim and square to $21\frac{1}{2}$ " x $21\frac{1}{2}$ " (Figure 6).
 10. Sew the A and B Blocks together into rows with one $2\frac{3}{4}$ " x $21\frac{1}{2}$ " H rectangle between each, and on either end of each row, referring to the quilt diagram for block placement. Sew the rows together with one $2\frac{3}{4}$ " x $72\frac{1}{2}$ " H sash between each. Sew another $2\frac{3}{4}$ " x $72\frac{1}{2}$ " H sash to the top and bottom to complete the quilt center.
 11. Sew one $3\frac{1}{2}$ " x $72\frac{1}{2}$ " B border to each side of the quilt center. Press. Sew one $3\frac{1}{2}$ " x $78\frac{1}{2}$ " B border to the top and bottom. Press.

Finishing:

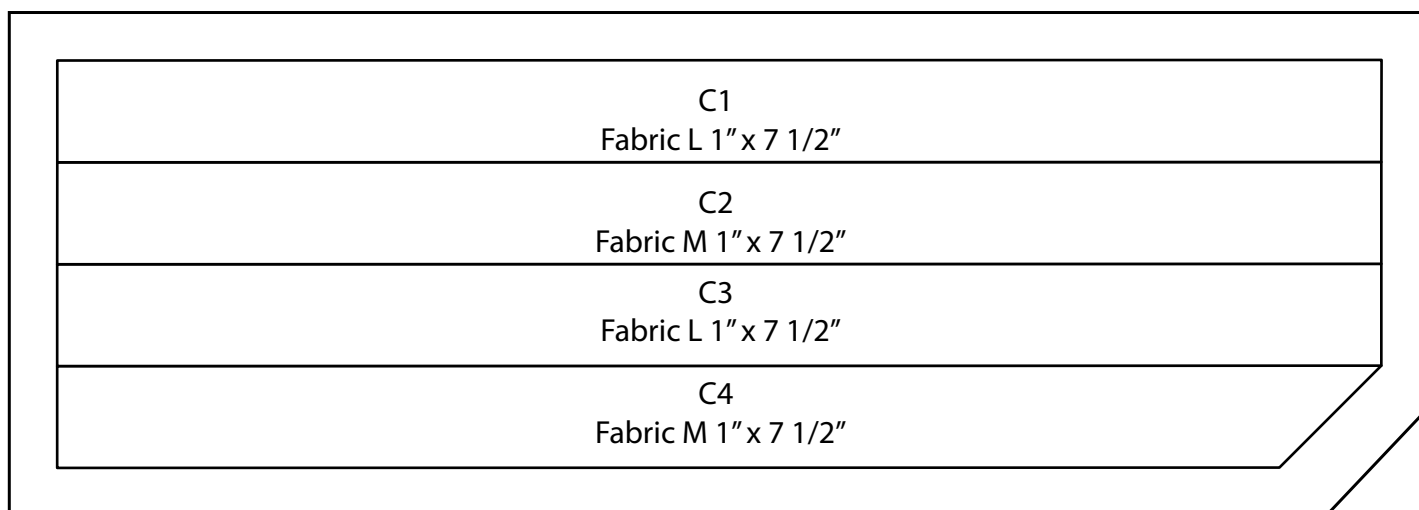
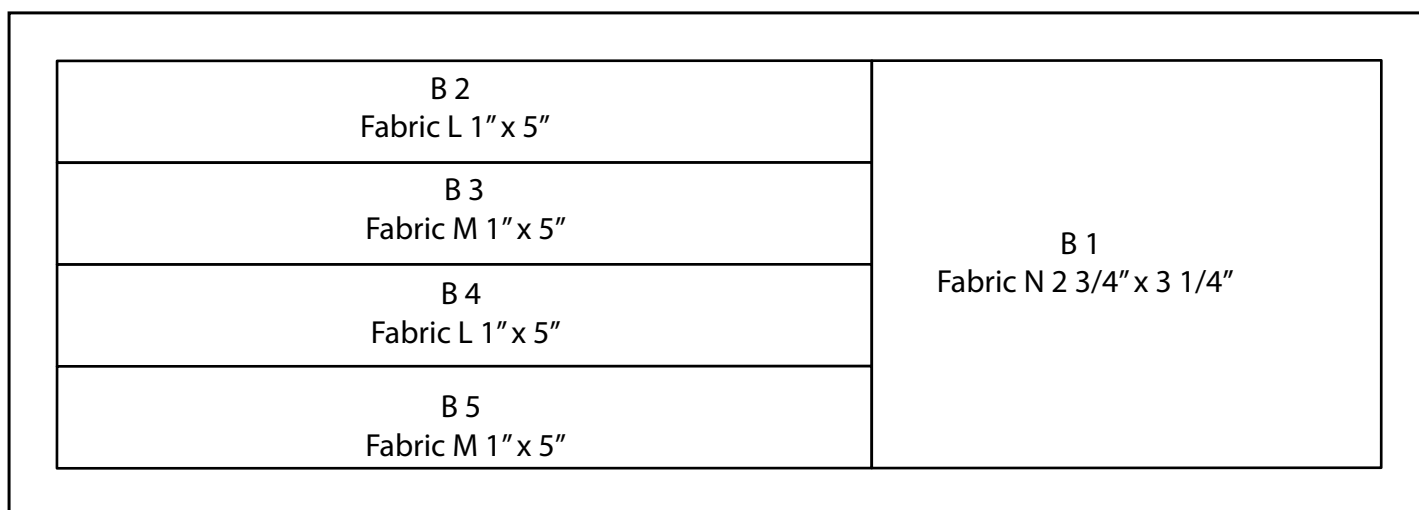
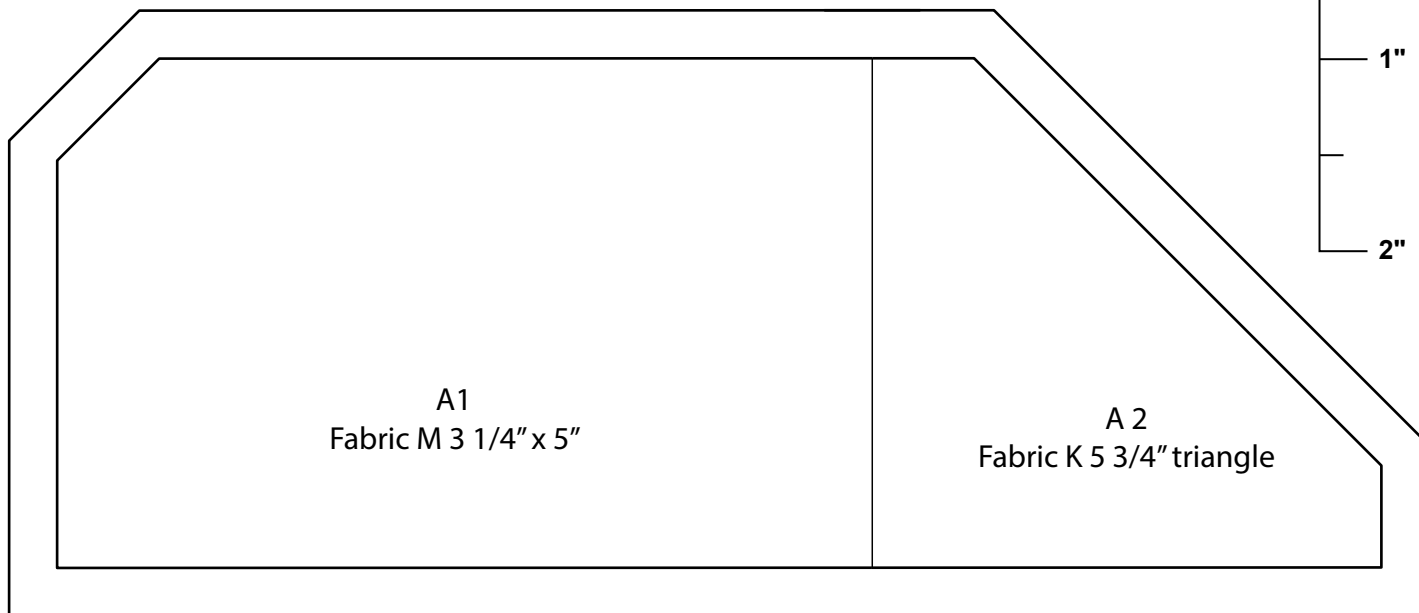
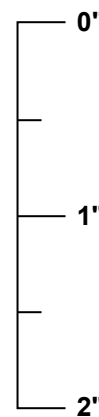
1. Prepare backing with one seam to measure 86 " x 86 ". Press seam open.
2. Layer quilt top, batting, and backing. Baste layers together.
3. Quilt as desired.
4. Trim layers even with quilt top squaring corners.
5. Join thirteen $2\frac{1}{4}$ " C binding strips with diagonal seams. Press seams open. Press strip in half lengthwise with wrong sides together to make double-fold binding. Attach binding to quilt using your favorite method.
6. Make a label and sew to the back of the quilt.



Quilt Diagram

Center Block Paper Piecing
100%
Print 1

Scale Check for pdf files. When you print these templates, this ruler should measure 2 inches long. If it does not, change, "page scaling" to "none" in the print dialog box.



American Farm

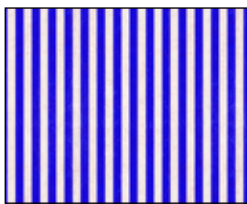
Fabric Collection by
Michael Mullan for P&B Textiles



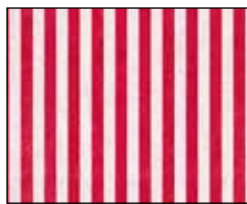
AFAR 4499 MU*



AFAR 4500 MU*



AFAR 4501 B



AFAR 4501 R*



AFAR 4502 LB*



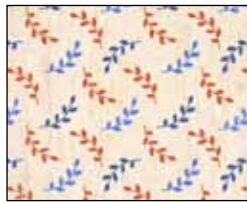
AFAR 4502 LR*



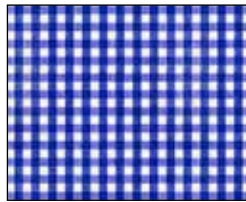
AFAR 4502 N*



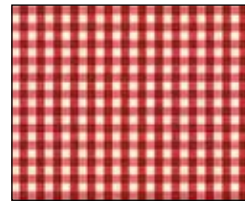
AFAR 4502 R*



AFAR 4503 MU*



AFAR 4504 B



AFAR 4504 R†



AFAR 4505 N*



AFAR 4505 R*



SUE6 302 R*



SUEB 300 BB*



SUE6 302 R*



SUEB 300 BB*