

# All Over Alaska

Tote Design by Heidi Pridemore



Tote size: approximately 14" high x 12" wide x 4" deep



Featuring fabrics from  
All Over Alaska by Alaska's Artist Jon Van Zyle for P&B Textiles



# All Over Alaska

Fabric collection by Alaska's Artist Jon Van Zyle for P&B Textiles

Tote designed by Heidi Pridemore

Skill level: Confident Beginner • Finished Tote Size: approximately 14" high x 12" wide x 4" deep

## Tote Yardages:

### Tote #1 (Makes one tote)

Fabric A: <b>ALKA 4230 MU</b> .....	1/3 yard
Fabric B: <b>SUED 300 XZ</b> .....	1/3 yard
Fabric C: <b>SUE5 301 HG</b> .....	1/4 yard
Fabric D: <b>SUED 300 XZ</b> .....	1/8 yard
Fabric E: <b>SUEB 300 LB</b> .....	1/2 yard

### Tote #2 (Makes one tote)

Fabric A: <b>ALKA 4230 NE</b> .....	1/3 yard
Fabric B: <b>SUEB 300 R</b> .....	1/3 yard
Fabric C: <b>SUED 300 Z</b> .....	1/4 yard
Fabric D: <b>SUEB 300 R</b> .....	1/8 yard
Fabric E: <b>SUEM 300 EZ</b> .....	1/2 yard

Additional material:

two pieces of 14 1/2" x 16 1/2" cotton batting per bag.

## Cutting Instructions:

Please read all instructions carefully before beginning. Strips are cut across the width of fabric (perpendicular to selvages) unless otherwise stated. All seams are sewn with a 1/4" seam unless otherwise stated. Label all pieces.

### From Fabric A:

1. Cut two 10 1/2" x 16 1/2" pieces for the bag bottom

### From Fabric B:

1. Cut two 4" x 25" strips for the straps.

### From Fabric C:

1. Cut two 3 1/2" x 16 1/2" strips for the bag top,

### From Fabric D:

1. Cut two 1 1/2" x 16 1/2" strips for the bag trim.

### From Fabric E:

1. Cut two 14 1/2" x 16 1/2" strips for the lining.

## Piecing Instructions:

1. Sew one 1 1/2" x 16 1/2" Fabric D strip to the top of one 10 1/2" x 16 1/2" Fabric A piece. Sew one 3 1/2" x 16 1/2" Fabric C strip to the top of the 1 1/2" x 16 1/2" Fabric D strip to make the bag front panel. Repeat to make the bag back panel.
2. Layer the bag front panel with one 14 1/2" x 16 1/2" cotton batting and quilt as desired. Repeat with the bag back panel.
3. Place the bag front panel and bag back panel, right sides together, Sew down each side and across the bottom of the two layers to make the bag body.

4. Place the (2) 14 1/2" x 16 1/2" Fabric E panels, right sides together. Sew down each side and across the bottom, leaving a 4" opening in one seam for turning the bag later to make the bag lining.

5. Measure and mark in from the side and down 2" on the bottom two corners of the bag body. Cut the square on each corner. Repeat with the bag lining (Figure 1),

6. Open the cut corner on the bag body and fold the opening to line up the seams on the side of the bag with the bottom seam. Stitch across the layers with a 1/4" seam allowance to make one box corner. Repeat to make a box corner on the other bottom corner of the bag body and the two bottom corners of the lining.

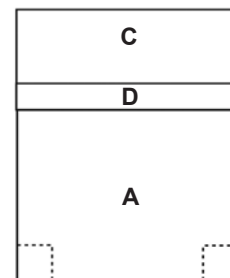


Figure 1

7. Turn the bag body right side out. Leave the lining wrong side out.

8. To make the straps, fold one 4" x 25" Fabric B strip in half lengthwise and press a centerline. Open the folded strip and fold the long edges in, aligning them with the centerline and press. Fold the strip in half a second time and press to make one 1" x 25" strip with finished edges. Refold the strap and topstitch down each long side about an 1/8" from each edge. Topstitch again 1/4" from each 1/8" topstitch. Repeat to make a second strap.

9. Position and pin one strap to the front of the bag body and one to the back of the bag body, with the handle facing down and aligning the raw edges of the strap with the raw edges of the bag body (Figure 2).

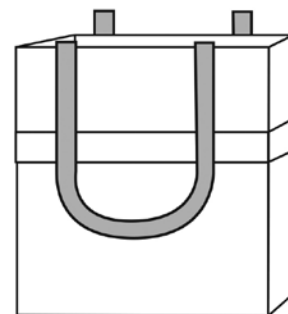


Figure 2

10. Slide the lining over the bag body and align the top raw edges on both bag and the straps. Pin in place. Sew around the bag and lining top, catching the strap ends in the seam. Go back over the strap ends to re-enforce.
11. Turn the bag right side out through the opening in the lining. Stitch the opening in the lining closed.
12. Work the bag with your hands to shape the box bottom on the bag. Press the bottom and up the four sides of the bag to create a crisp edges.
13. Top stitch 1/4" from edge around the bag top to keep the lining fabric from rolling outward.

*Optional: Top stitch 1/8" along all four sides of the bottom edges of the bag to help hold the box shape.*

# All Over Alaska

Fabric Collection by  
Alaska's Artist Jon Van Zyle  
for P&B Textiles



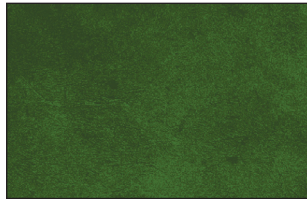
ALKA 4230 MU\*



ALKA 4230 NE\*



SUEB 300 XZ\*



SUE5 301 HG\*



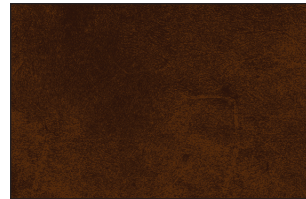
SUEB 300 R\*



SUEM 300 EZ\*



SUEB 300 LB\*



SUEB 300 Z\*