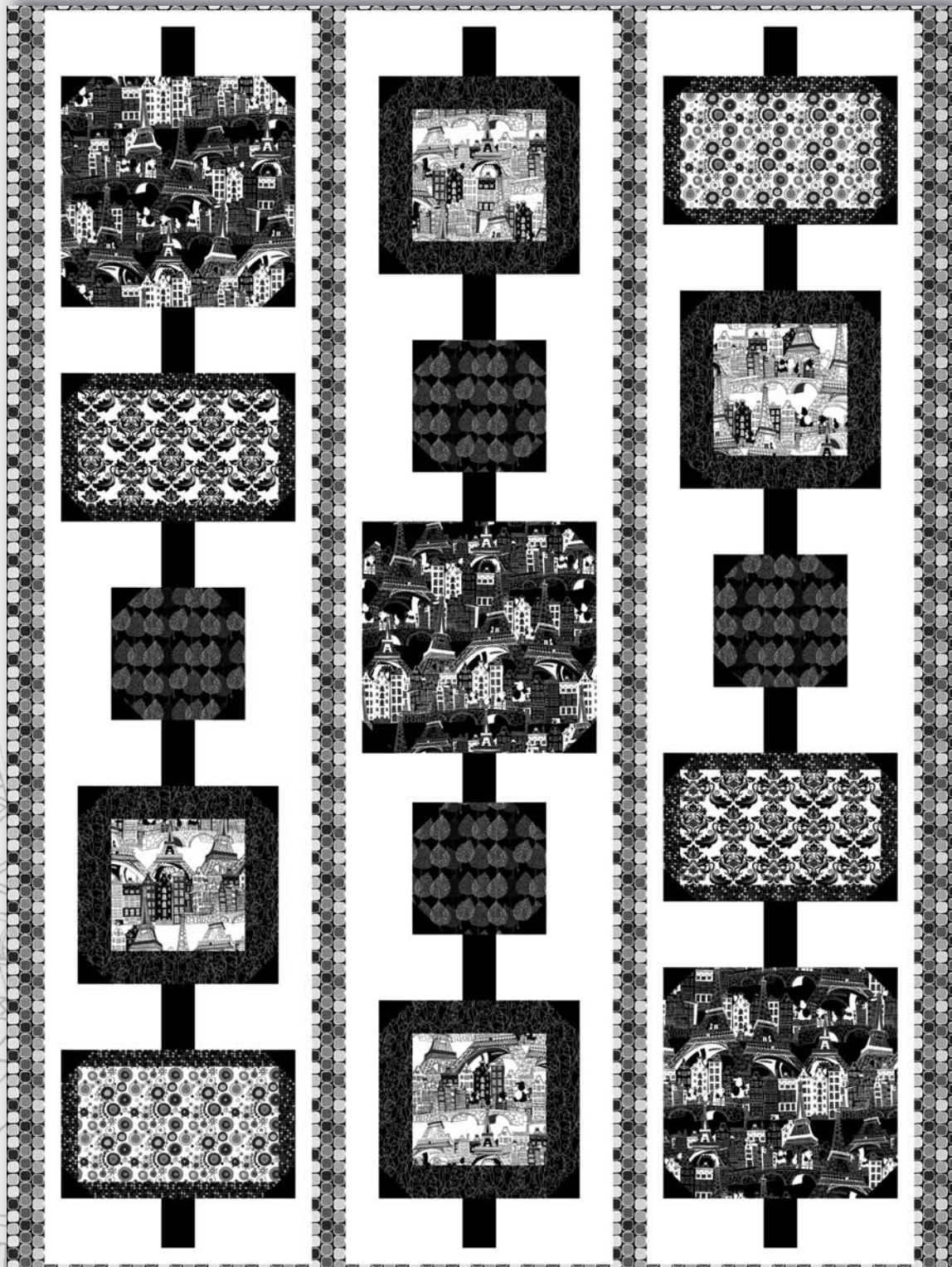


# ILLUSTRATIONS



# ILLUSTRATIONS

The Gallery quilt by Heidi Pridemore  
using the *Illustrations* fabric collection  
by P&B Textiles

Size: 56" x 76"

## YARDAGE

Fabric A	ILLU 760 K	1 yard
Fabric B	ILLU 760 W	1/3 yard
Fabric C	ILLU 762 W	1/2 yard
Fabric D	ILLU 763 K	1 1/4 yards
Fabric E	ILLU 764 K	1/2 yard
Fabric F	ILLU 765 W	1/3 yard
Fabric G	ILLU 769 K	1/2 yard
Fabric H	ILLU 767 K	1/3 yard
Fabric I	CSNE K*	5/8 yard
Fabric J	CSNE W*	2 1/8 yards
Backing	any ILLU fabric	5 yards

\* Color Spectrum solids

## CUTTING

All strips are cut across the width of the fabric.

**From Fabric A (ILLU 760 K), cut:**

(2) 14 1/2" x 42" strips; cut into (3) 14 1/2" squares

**From Fabric B (ILLU 760 W), cut:**

(1) 8 1/2" x 42" strip; cut into (4) 8 1/2" squares

**From Fabric C (ILLU 762 W), cut:**

- (1) 12 1/2" x 42" strip;  
cut into (2) 7 1/2" x 12 1/2" rectangles

**From Fabric D (ILLU 763 K), cut:**

- (8) 2 1/2" x 42" strips; piece the strips and  
cut (4) 2 1/2" x 76 1/2" strips
- (7) 2 1/2" x 42" binding strips

**From Fabric E (ILLU 764 K), cut:**

- (1) 12 1/2" x 42" strip; cut into (8) 2 1/2" x 12 1/2"  
strips and (8) 2 1/2" x 8 1/2" strips.

**From Fabric F (ILLU 765 W), cut:**

- (1) 7 1/2" x 42" strip;  
cut into (2) 7 1/2" x 12 1/2" rectangles

**From Fabric G (ILLU 769 K), cut:**

- (1) 14 1/2" x 42" strip; cut into (8) 1 1/2" x 14 1/2"  
strips and (8) 1 1/2" x 7 1/2" strips.

**From Fabric H (ILLU 767 K), cut:**

- (1) 8 1/2" x 42" strip; cut into (4) 8 1/2" squares

**From Fabric I (CSNE K), cut:**

- (4) 2 1/2" x 42" strips; cut into (60) 2 1/2" squares
- (1) 3 1/2" x 42" strip;  
cut into (8) 2 1/2" x 3 1/2" rectangle
- (1) 4 1/2" x 42" strip;  
cut into (10) 2 1/2" x 4 1/2" rectangle

**From Fabric J (CSNE W), cut:**

- (1) 16 1/2" x 42" strip; cut into (6) 1 1/2" x 16 1/2"  
strips and (8) 2 1/2" x 12 1/2" strips
- (4) 7 1/2" x 42" strips; cut into (16) 3 1/2" x 7 1/2"  
strips and (20) 4 1/2" x 7 1/2" strips
- (1) 14 1/2" x 42" strip; cut into (6) 1 1/2" x 14 1/2"  
strips and (8) 1 1/2" x 9 1/2" strips
- (1) 8 1/2" x 42" strip; cut into (8) 4 1/2" x 8 1/2" strips

## BLOCK ASSEMBLY

Refer to the quilt layout diagram as needed throughout.

**1•** Sew Fabric J 3 1/2" x 7 1/2" strips to opposite sides of a Fabric I 2 1/2" x 3 1/2" rectangle to make a 3 1/2"-wide strip. Make a total of (8) 3 1/2"-wide sashing strips.

**2•** Sew Fabric J 4 1/2" x 7 1/2" strips to opposite sides of a Fabric I 2 1/2" x 4 1/2" Fabric I rectangle to make a 4 1/2"-wide strip. Make a total of (10) 4 1/2"-wide sashing strips.

**3•** Draw a diagonal line from corner to corner on the wrong side of each Fabric I square. Place a marked square on one corner of Fabric A square, right sides together. Sew along the marked line and trim away the excess corner fabric, leaving a 1/4" seam allowance. Press the resulting triangle open. Repeat to sew marked squares to the remaining three corners of the Fabric A square to make a center unit. Make three units.



**4•** Sew Fabric J  $1\frac{1}{2}'' \times 14\frac{1}{2}''$  strips to opposite sides of a center unit from step 3 to complete Block 1. The block should measure  $16\frac{1}{2}'' \times 14\frac{1}{2}''$ . Make a total of three of Block 1.

**5•** Sew Fabric G  $1\frac{1}{2}'' \times 7\frac{1}{2}''$  strips to opposite sides of a Fabric C rectangle. Sew Fabric G  $1\frac{1}{2}'' \times 14\frac{1}{2}''$  strips to the top and bottom of the Fabric G rectangle to make a center unit. Repeat to make a second center unit.

**6•** Sew marked squares from step 3 to each corner of a center unit from step 5. Trim and press in the same way as before to complete a Block 2 center unit. Make a total of two units.

**7•** Sew Fabric G  $1\frac{1}{2}'' \times 7\frac{1}{2}''$  strips to opposite sides of Fabric F  $7\frac{1}{2}'' \times 12\frac{1}{2}''$  rectangle. Sew Fabric G  $1\frac{1}{2}'' \times 14\frac{1}{2}''$  strips to the top and bottom of the Fabric F rectangle to make a center unit.

**8•** Sew marked squares from step 3 to each corner of a center unit from step 7. Trim and press in the same way as before to complete a Block 3 center unit. Make a total of two units.

**9•** Sew Fabric J  $1\frac{1}{2}'' \times 9\frac{1}{2}''$  strips to opposite sides of each Block 2 center unit and Block 3 center unit to complete two of Block 2 and two of Block 3. The blocks should measure  $12\frac{1}{2}'' \times 9\frac{1}{2}''$ .

**10•** Sew marked squares from step 3 to each corner of a Fabric H square. Trim and press in the same way as before to complete a Block 4 center unit. Make a total of four units.

**11•** Sew Fabric J  $4\frac{1}{2}'' \times 8\frac{1}{2}''$  strips to opposite sides of a Block 4 center unit to complete Block 4. The block should measure  $16\frac{1}{2}'' \times 8\frac{1}{2}''$ . Make a total of four of Block 4.

**12•** Sew Fabric E  $2\frac{1}{2}'' \times 8\frac{1}{2}''$  strip to opposite sides of a Fabric B square. Sew Fabric E  $2\frac{1}{2}'' \times 12\frac{1}{2}''$  strips to the top and bottom of the Fabric B square to make a center unit. Make a total of four units.

**13•** Sew marked squares from step 3 to each corner of a center unit from step 12. Trim and press in the same way as before to complete a Block 5 center unit. Make a total of four units.

**14•** Sew Fabric J  $2\frac{1}{2}'' \times 12\frac{1}{2}''$  strips to opposite sides of a Block 5 center unit to complete Block 5. The block should measure  $16\frac{1}{2}'' \times 12\frac{1}{2}''$ . Make a total of four of Block 5.

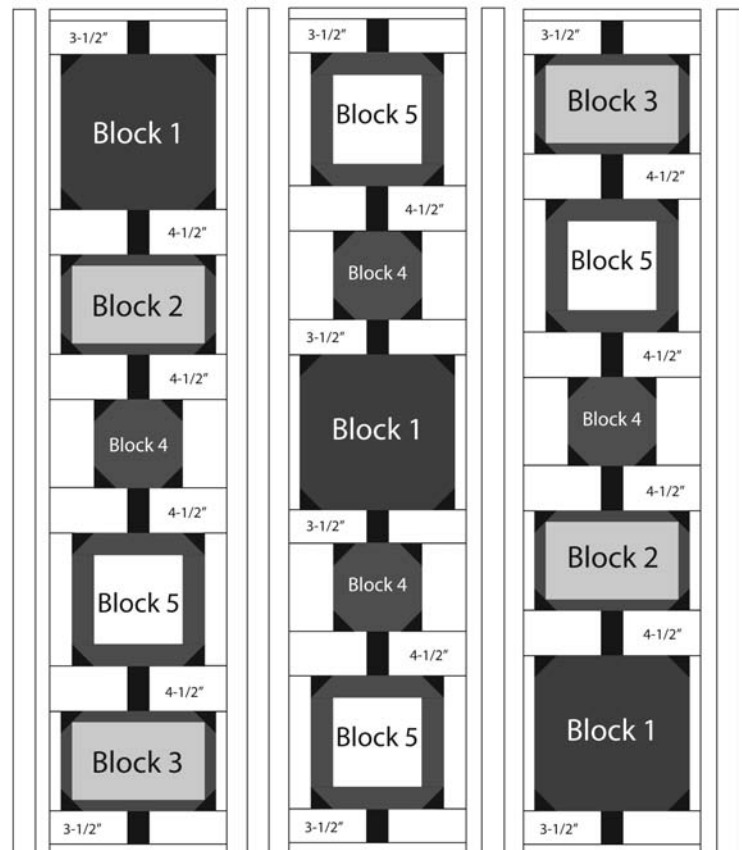
## QUILT TOP ASSEMBLY

**15•** For the left column, sew together two Fabric J  $1\frac{1}{2}'' \times 16\frac{1}{2}''$  strips, two  $3\frac{1}{2}''$ -wide sashing strips, four  $4\frac{1}{2}''$ -wide sashing strips, one of Block 1, one of Block 2, one of Block 3, one of Block 4, and one of Block 5 as shown in the quilt layout diagram. Repeat to make the right column, making sure to orient the blocks as shown in the quilt layout diagram.

**16•** For the center column, sew together two Fabric J  $1\frac{1}{2}'' \times 16\frac{1}{2}''$  strips, four  $3\frac{1}{2}''$ -wide sashing strips, two  $4\frac{1}{2}''$ -wide sashing strips, two of Block 4, two of Block 5, and one of Block 1 as shown in the quilt layout diagram.

**17•** Join the three columns and four Fabric D  $2\frac{1}{2}'' \times 76\frac{1}{2}''$  strips, alternating them as shown in the quilt layout diagram to complete the quilt top.

**18•** Layer the quilt top with batting and backing; baste. Quilt as desired. Using the Fabric D binding strips, bind the edges to finish.



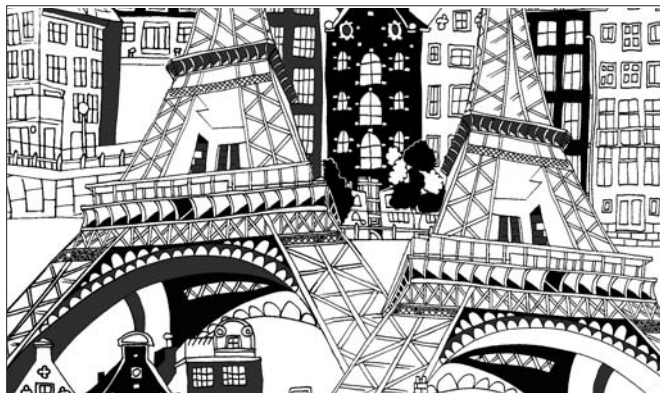
QUILT LAYOUT

# ILLUSTRATIONS

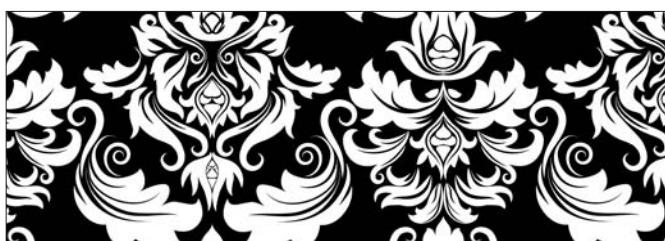
Fabric Collection by **P&B Textiles**



ILLU 760 K



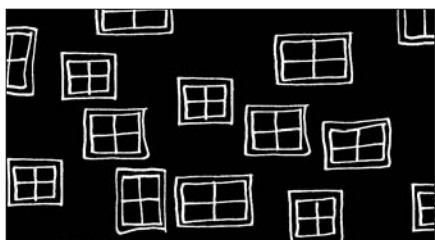
ILLU 760 W



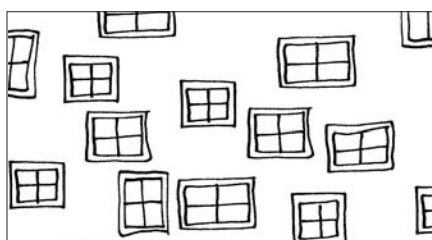
ILLU 762 K



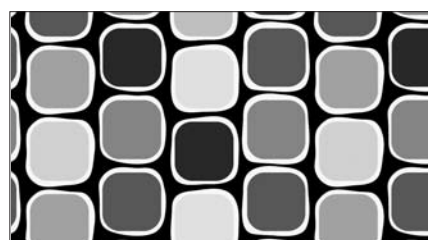
ILLU 762 W



ILLU 761 K



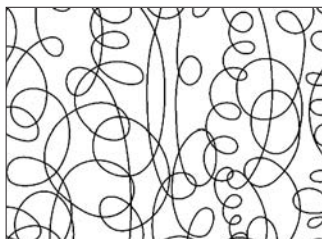
ILLU 761 W



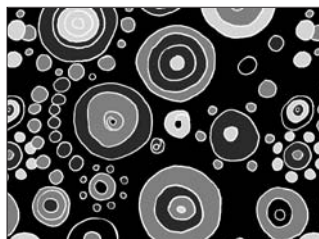
ILLU 763 K



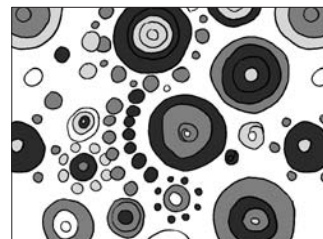
ILLU 764 K



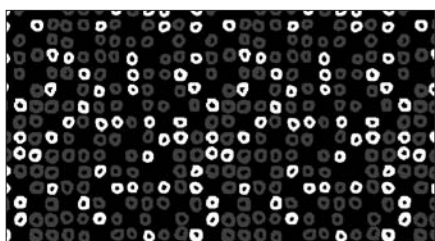
ILLU 764 W



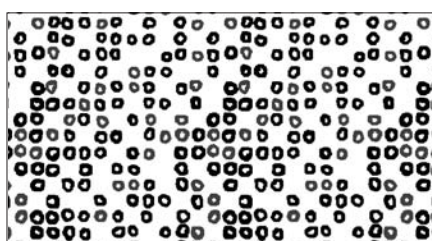
ILLU 765 K



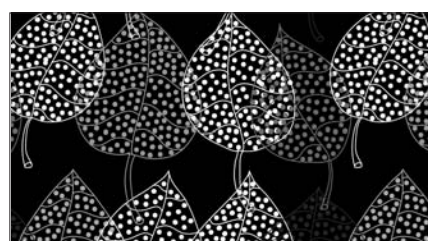
ILLU 765 W



ILLU 769 K



ILLU 769 W



ILLU 767 K



P&B Textiles ♦ [www.pbtex.com](http://www.pbtex.com) ♦ 800-351-9087  
 45-47 Washington St, Pawtucket, RI 02860 ♦ 237 W. 35th St, 11th floor, New York, NY 10001

① 100% cotton ♦ Cold wash & dry ♦ 43"/44" ♦ Colors may vary due to printing process  
 All fabrics shown at 30% scale.