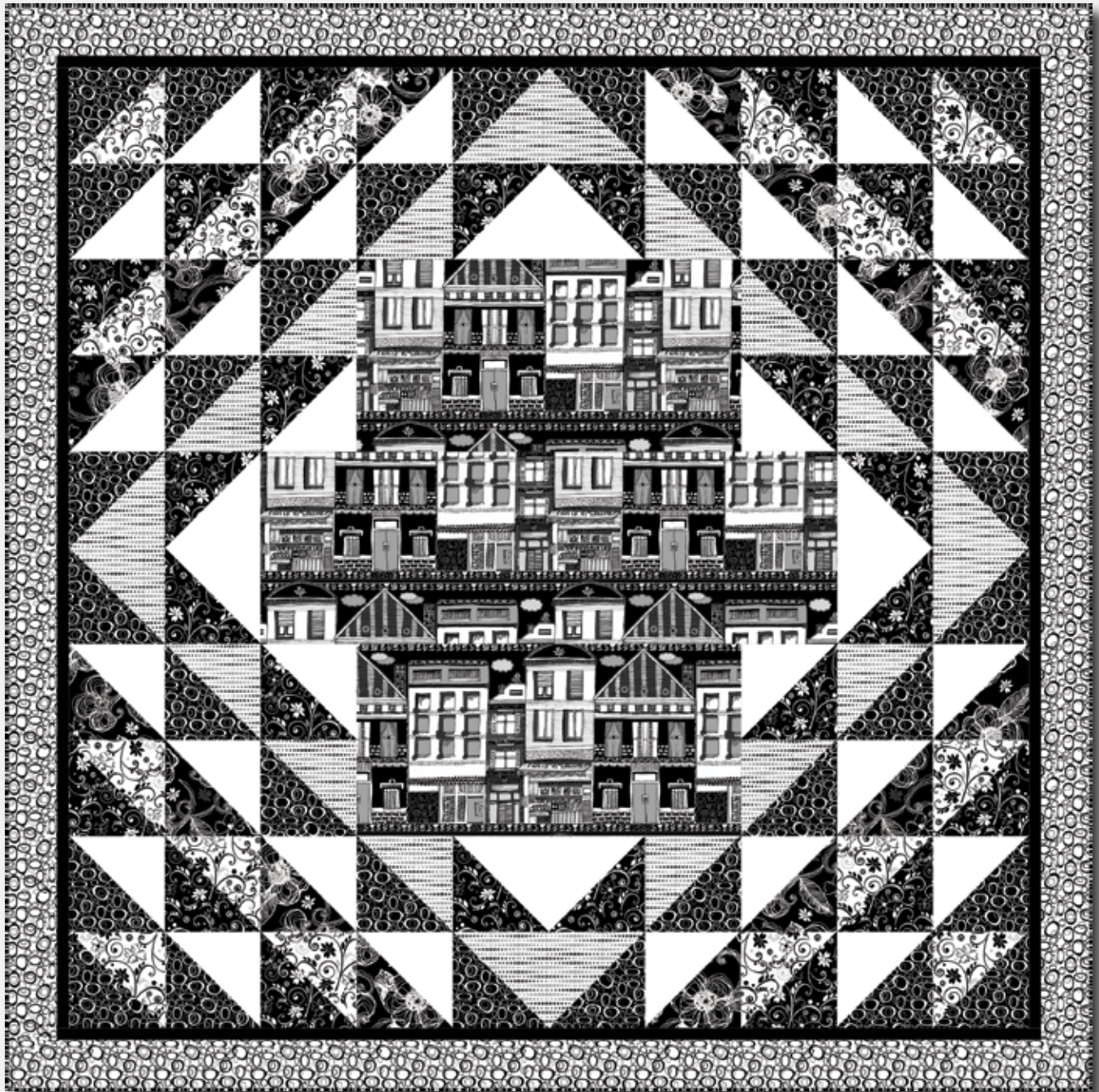


ILLUSTRATIONS 2



ILLUSTRATIONS 2

Town Square quilt by Nancy Mahoney
featuring the *Illustrations 2* collection by P&B Textiles
Quilt Size: 68" square

YARDAGE

| | | |
|----------|-----------------|-------------------------------------|
| Fabric A | ILL2 881 KW | 1 ⁵ / ₈ yards |
| Fabric B | ILL2 882 K | ¹ / ₂ yard |
| Fabric C | ILL2 883 K | ⁵ / ₈ yard |
| Fabric D | ILL2 884 KW | ¹ / ₂ yard |
| Fabric E | ILL2 884 WK | ¹ / ₂ yard |
| Fabric F | ILL2 885 W | ¹ / ₂ yard |
| Fabric G | ILL2 886 KW | ³ / ₄ yard |
| Fabric H | ILL2 886 WK | ⁷ / ₈ yard |
| Fabric I | CSNE W* | ³ / ₄ yard |
| Fabric J | CSNE K* | ³ / ₈ yard |
| Backing | Any ILL2 fabric | 4 ³ / ₈ yards |

* from the *Color Spectrum* collection

CUTTING

From fabric A (ILL2 881 KW), cut:

- (1) 12 ¹/₂" x 36 ¹/₂" strip, centering a row of houses in the middle of the strip
- (2) 12 ¹/₂" x 24 ¹/₂" strips, centering a row of houses in the middle of each strip

From fabric B (ILL2 882 K), cut:

- (2) 7" x 42" strips; crosscut into (8) 7" squares

From fabric C (ILL2 883 K), cut:

- (8) 2 ¹/₄" x 42" binding strips

From fabric D (ILL2 884 KW), cut:

- (2) 7" x 42" strips; crosscut into (12) 7" squares

From fabric E (ILL2 884 WK), cut:

- (2) 7" x 42" strips; crosscut into (8) 7" squares

From fabric F (ILL2 885 W), cut:

- (2) 7" x 42" strips; crosscut into (10) 7" squares

From fabric G (ILL2 886 KW), cut:

- (4) 7" x 42" strips; crosscut into (16) 7" squares

From fabric H (ILL2 886 WK), cut:

- (7) 3 ¹/₂" x 42" strips. Piece the strips and cut (2) 3 ¹/₂" x 68" strips and (2) 3 ¹/₂" x 62" strips.

From fabric I (CSNE W), cut:

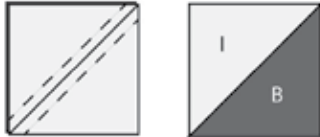
- (4) 7" x 42" strips; crosscut into (18) 7" squares

From fabric J (CSNE K), cut:

- (7) 1 ¹/₄" x 42" strips. Piece the strips and cut (2) 1 ¹/₄" x 62" strips and (2) 1 ¹/₄" x 60 ¹/₂" strips.

MAKING THE QUILT

1. Layer one fabric B square right sides together with a fabric I square. Draw a diagonal line on the wrong side of the top square. Sew $\frac{1}{4}$ " on each side of the drawn line. Cut the squares apart on the line to make two half-square-triangle units. Press the seam allowances toward the darker triangle. Trim the units to measure $6\frac{1}{2}$ " square. Repeat to make a total of 16 B/I units.



2. Repeat step 1, using six fabric D and fabric E squares to make 12 D/E units. Use six fabric D and fabric I squares to make 12 D/I units.

3. In the same way, use 10 fabric G and fabric F squares to make 20 G/F units. Note that fabric F is directional. On the wrong side of five squares, draw the line from the upper-right to the lower-left. On the five remaining squares, draw the line from upper-left to lower-right. Use four fabric G

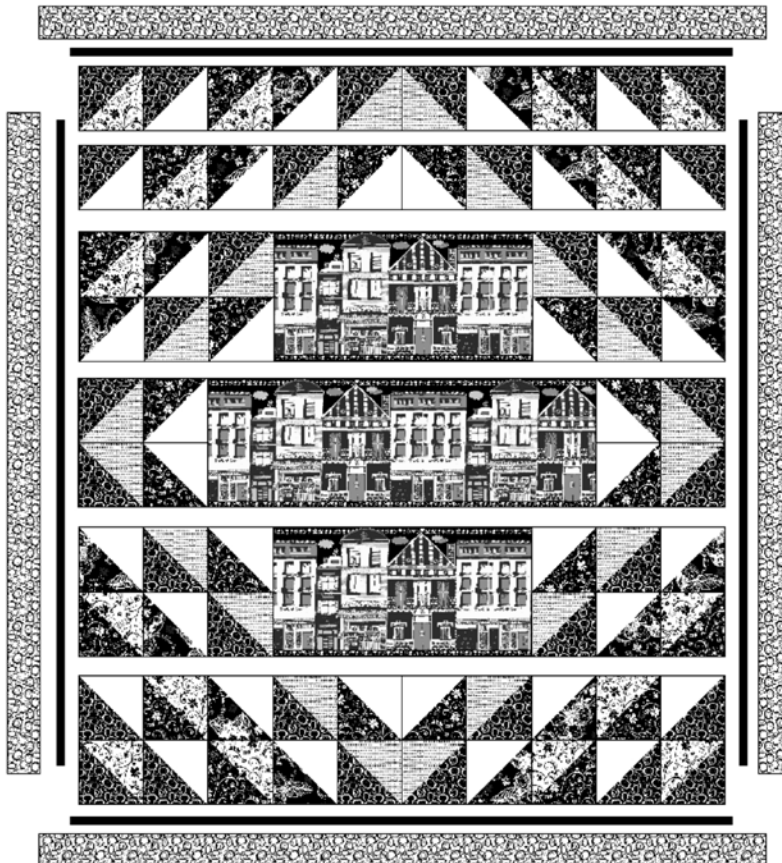
and fabric I squares to make 8 G/I units and use two fabric G and fabric E squares to make 4 G/E units.

4. Refer to the quilt photo and the quilt assembly diagram for placement guidance. Lay out the half-square-triangle units and the fabric A rectangles as shown. Join the pieces into rows. Press the seam allowances in the opposite direction from row to row. Join the rows and press. The quilt-top center should measure $60\frac{1}{2}$ " square.

5. Sew fabric J $60\frac{1}{2}$ "-long border strips to opposite sides of the quilt-top center. Then sew fabric J 62 "-long border strips to the top and bottom of the quilt top to complete the inner border.

6. Sew fabric H 62 "-long border strips to opposite sides of the quilt top center. Then sew fabric H 68 "-long border strips to the top and bottom of the quilt top to complete the outer border.

7. Layer the quilt top with batting and backing; baste. Quilt as desired. Using the fabric C binding strips, bind the edges to finish.



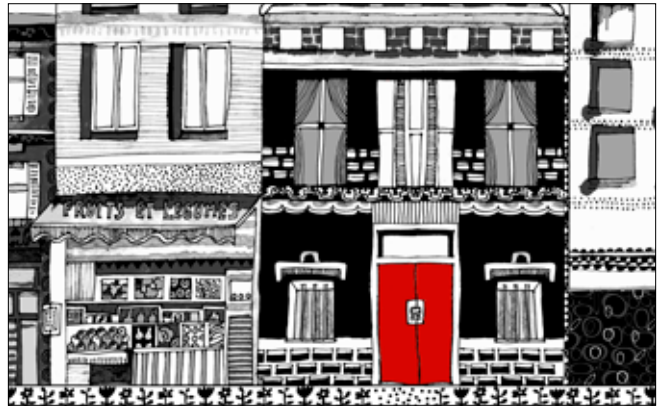
QUILT ASSEMBLY DIAGRAM

ILLUSTRATIONS 2

Fabric Collection by **P&B Textiles**



ILL2 881 KW



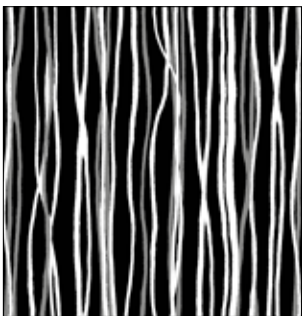
ILL2 881 WR



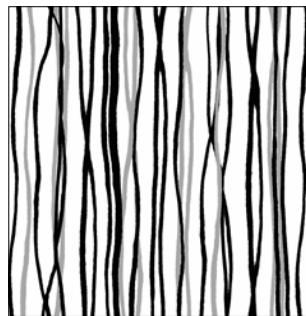
ILL2 882 K



ILL2 882 W



ILL2 883 K



ILL2 883 W



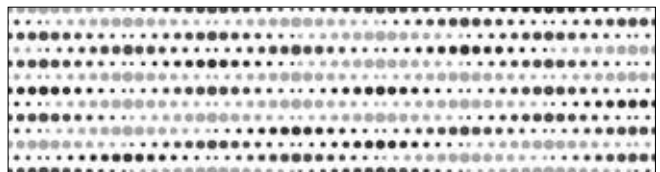
ILL2 884 KW



ILL2 884 WK



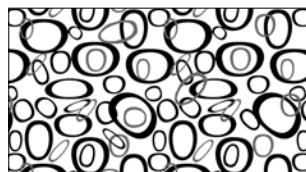
ILL2 885 K



ILL2 885 W



ILL2 886 KW



ILL2 886 WK



ILL2 887 KW



ILL2 887 WK



P&B Textiles ♦ www.pbtex.com ♦ 800-351-9087

45-47 Washington St., Pawtucket, RI 02860 ♦ 237 W. 35th St., 11th floor, New York, NY 10001

▲ 100% cotton ♦ Cold wash & dry ♦ 43" / 44" ♦ Colors may vary due to printing process

All fabrics shown at 25% scale except where indicated otherwise.