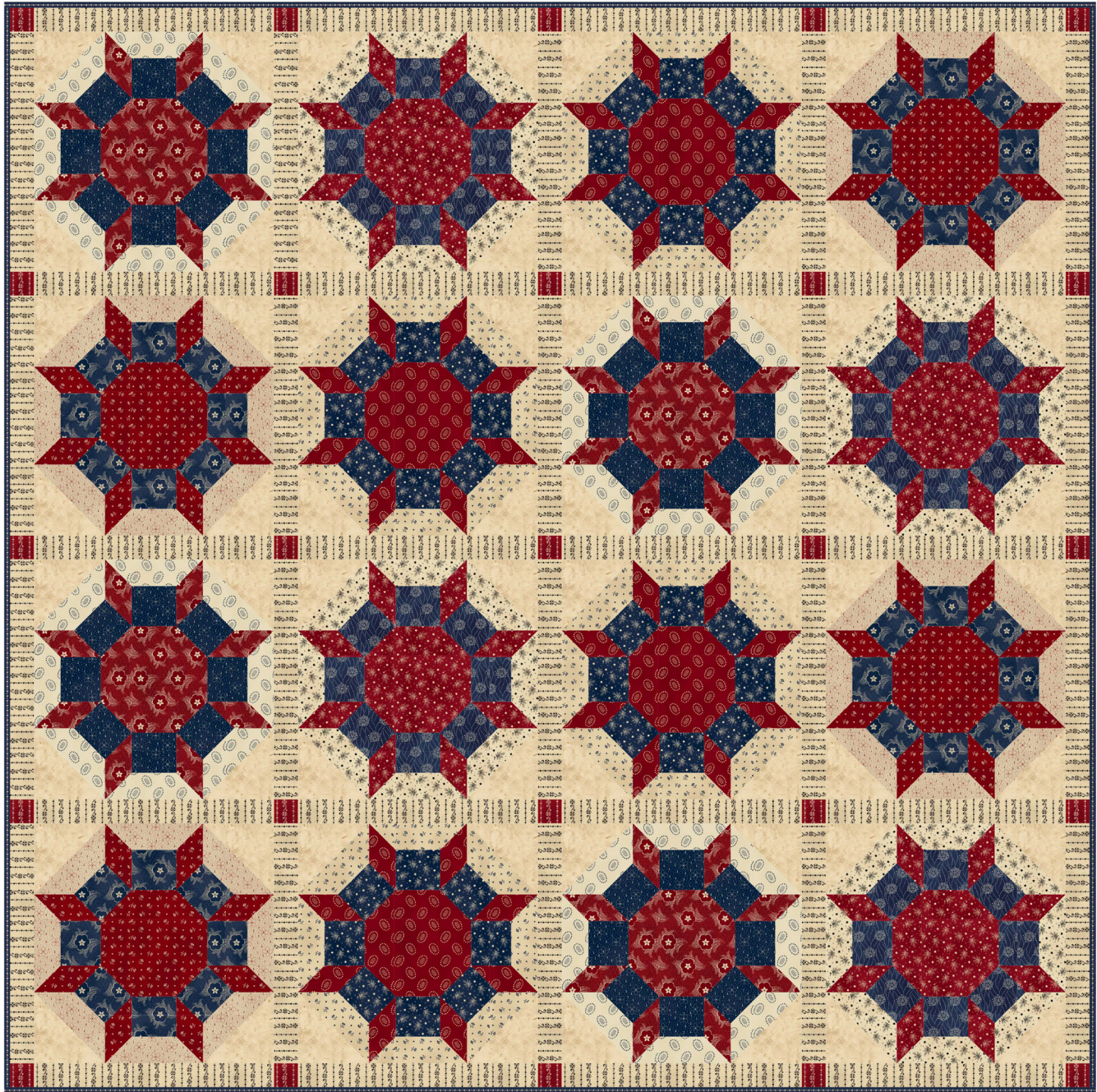


# Gettysburg Era

Honor and Glory Quilt by Stacey Day



Shown using fabrics from the line, *Gettysburg Era*,  
by Sara Morgan for Washington Street Studios

*Washington Street Studio*



A DIVISION OF P&B TEXTILES



Stacey Day  
QUILTS

# Gettysburg Era

Honor and Glory Quilt by Stacey Day

using the Gettysburg Era collection by Sara Morgan  
for Washington Street Studios Quilt Size 68"x 68"

## Yardage

Fabric A	<b>VSOL 280 E*</b>	7/8 yard
Fabric B	<b>GERA 572 N</b>	1/3 yard
Fabric C	<b>GERA 572 R</b>	2/3 yard
Fabric D	<b>GERA 573 E</b>	1/2 yard
Fabric E	<b>GERA 573 N</b>	1/3 yard
Fabric F	<b>GERA 573 R</b>	2/3 yard
Fabric G	<b>GERA 574 E</b>	1/2 yard
Fabric H	<b>GERA 574 R</b>	2/3 yard
Fabric I	<b>GERA 575 NE</b>	1/2 yard
Fabric J	<b>GERA 575 R</b>	2/3 yard
Fabric K	<b>GERA 576 E</b>	1/2 yard
Fabric L	<b>GERA 576 N</b>	1/3 yard
Fabric M	<b>GERA 577 N</b>	1/3 yard
Fabric N	<b>GERA 578 N</b>	5/8 yard
Fabric O	<b>GERA 578 NE</b>	1 1/4 yard
Fabric P	<b>GERA 578 R</b>	1/8 yard
Backing	<b>any GERA fabric</b>	4 1/3 yard

*\*From the Vintage Solids Collection*

## Cutting

*Strips are cut across the width of fabric unless otherwise stated*

### From Fabric A (VSOL 280 E), cut:

- (5) strips 5 3/8"x 42"; cut (64) pieces from Template 1

### From Fabric B (GERA 572 N), cut:

- (3) strips 3 1/4"x 42"; cut (32) pieces from Template 4

### From Fabric C (GERA 572 R), cut:

- (1) strip 7 1/4"x 42"; cut (4) pieces from Template 3
- (5) strips 2 1/4"x 42"; cut (32) pieces from Template 5

### From Fabric D (GERA 573 E), cut:

- (2) strips 7 3/8"x 42"; cut (32) pieces from Template 2

### From Fabric E (GERA 573 N), cut:

- (3) strips 3 1/4"x 42"; cut (32) pieces from Template 4

### From Fabric F (GERA 573 R), cut:

- (1) strip 7 1/4"x 42"; cut (4) pieces from Template 3
- (5) strips 2 1/4"x 42"; cut (32) pieces from Template 5

### From Fabric G (GERA 574 E), cut:

- (2) strips 7 3/8"x 42"; cut (32) pieces from Template 2

### From Fabric H (GERA 574 R), cut:

- (1) strip 7 1/4"x 42"; cut (4) pieces from Template 3
- (5) strips 2 1/4"x 42"; cut (32) pieces from Template 5

### From Fabric I (GERA 575 NE), cut:

- (2) strips 7 3/8"x 42"; cut (32) pieces from Template 2

### From Fabric J (GERA 575 R), cut:

- (1) strip 7 1/4"x 42"; cut (4) pieces from Template 3
- (5) strips 2 1/4"x 42"; cut (32) pieces from Template 5

### From Fabric K (GERA 576 E), cut:

- (2) strips 7 3/8"x 42"; cut (32) pieces from Template 2

### From Fabric L (GERA 576 N), cut:

- (3) strips 3 1/4"x 42"; cut (32) pieces from Template 4

### From Fabric M (GERA 577 N), cut:

- (3) strips 3 1/4"x 42"; cut (32) pieces from Template 4

### From Fabric N (GERA 578 N), cut:

- (8) strips 2 1/4" x 42"

### From Fabric O (GERA 578 NE), cut:

- (2) strips 15 1/2"x 42"; cut (40) rectangles, 2"x 15 1/2"

### From Fabric P (GERA 578 R), cut:

- (2) strips 2"x 42"; cut (25) squares, 2"

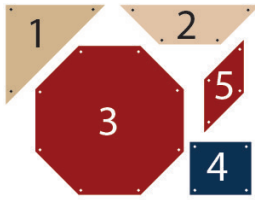
## Instructions

*This pattern is intended for hand piecing. The block used is the traditional Castle Wall block. This block can be machine pieced using careful pinning, y-seams, and inset block techniques. Pieces are finger pressed while sewing, and then heat pressed once the block is completed.*

1. Take the pieces from each of the following fabrics and set them aside together with (16) Fabric A pieces. These groupings will make four blocks each.

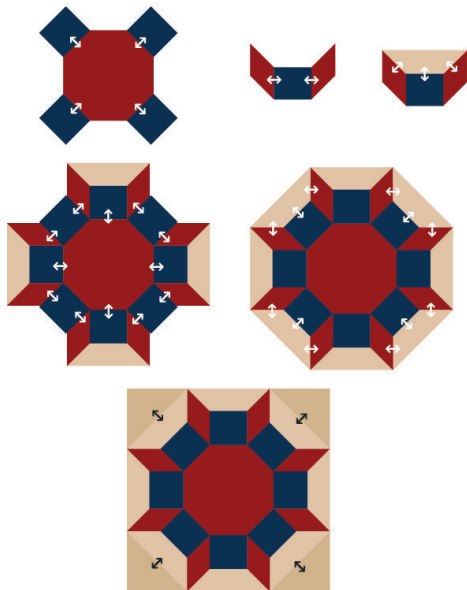
- Group A-Fabric B, Fabric J, and Fabric K
- Group B-Fabric C, Fabric G, and Fabric L
- Group C-Fabric D, Fabric F, and Fabric M
- Group D- Fabric E, Fabric H, and Fabric I

2. Take the Group A pieces and mark the seam allowance in each corner of every piece. This will be the star/stop points for sewing the blocks together.



3. Following the diagrams for reference, sew the following pieces together in the same order as written, pinning at the marked seam allowance and starting/stopping all stitching at the marks:

- (4) Template 4 to (1) Template 3
- (2) Template 5 to (1) Template 4
- (1) Template 2 to (1) Template 4/5 on straight seam, and then diagonal seams
- (4) Template 2/4/5 to (1) Template 3/4 on straight seam, and then diagonal seams
- (4) Template 2 to (1) Template 3/4/5 (now Main Piece) on straight seam, and then diagonal seams
- (4) Template 1 to (1) Main Piece



4. Repeat the sewing directions for the Group 2 templates, Group 3 Templates, and Group 4 Templates, to make (16) Castle Wall Blocks total (4 of each). Press the blocks flat, allowing the seams to settle naturally in the block. Trim and square to 15 1/2".

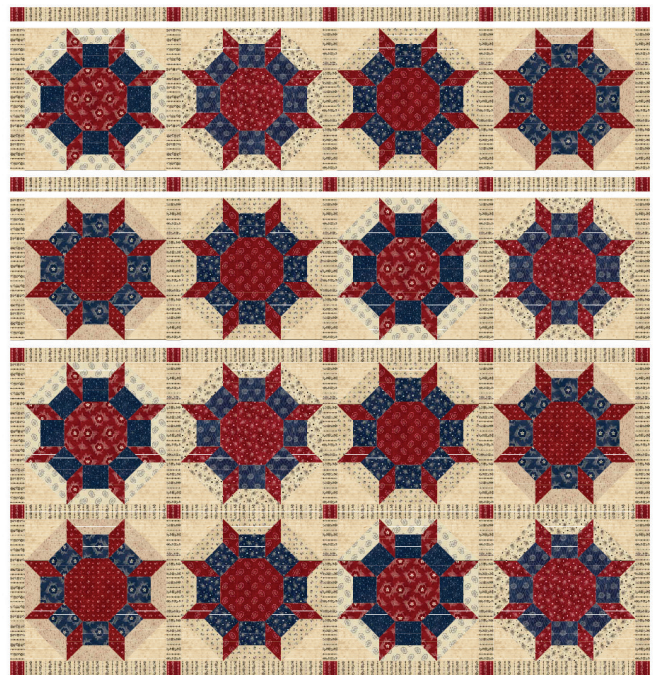
5. Take (4) of the Fabric O 2"x 15 1/2" rectangle and sew them together with a Fabric P 2" square in between each. Sew a Fabric P 2" square to either end to make a horizontal sash. Repeat to make (5) sashes total. Press towards Fabric O.

## Quilt Assembly

6. Following the layout diagram for block placement, or a layout as desired, sew (4) Castle Wall blocks together into a row, with a Fabric O 2"x 15 12" rectangle in between each block. Sew a Fabric O 2"x 15 1/2" rectangle to either end of the row. Press towards Fabric O. Repeat to make (4) rows total.

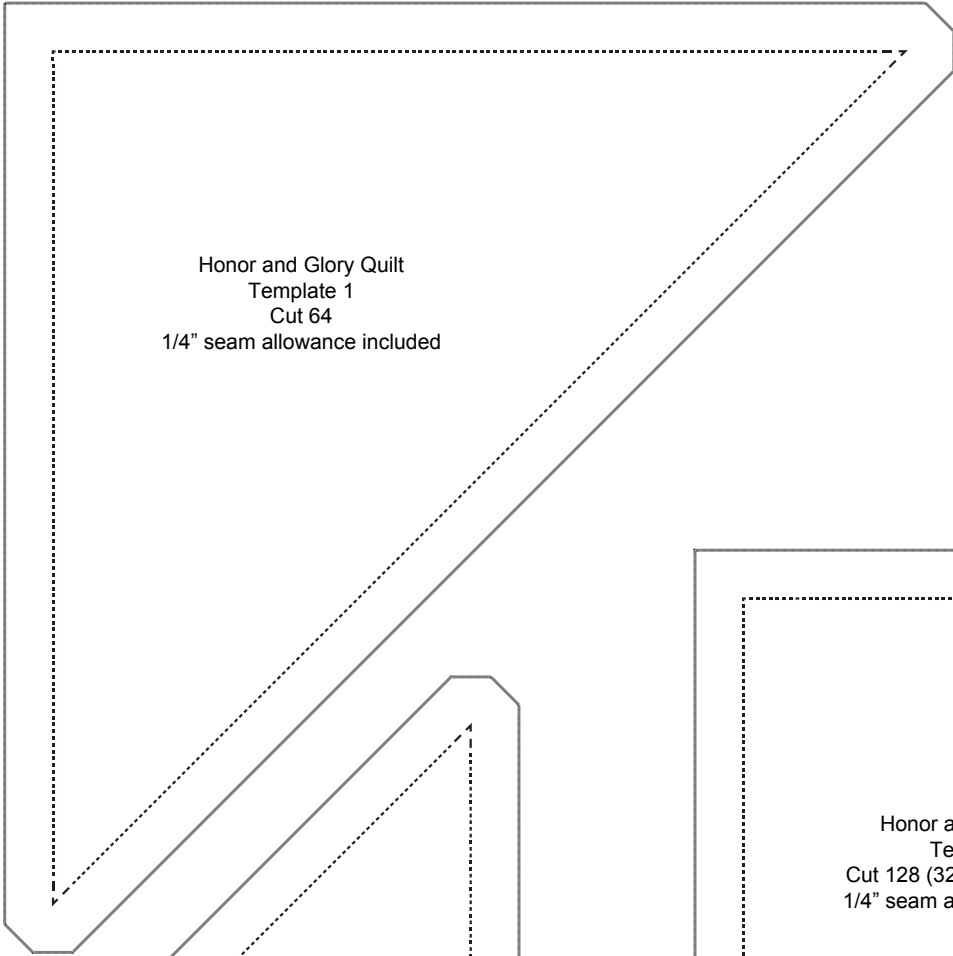
7. Sew the rows together with a horizontal sash in between each row, matching sashing seams carefully. Press towards the horizontal sashes. Sew the remaining (2) horizontal sashes to the top and bottom of the rows to finish the quilt top.

8. Layer the quilt top with batting and backing; baste. Quilt as desired. Using the Fabric N 2 1/4" wide binding strips, sew around the quilt top. Turn the binding to the back and secure in place. Label and enjoy!

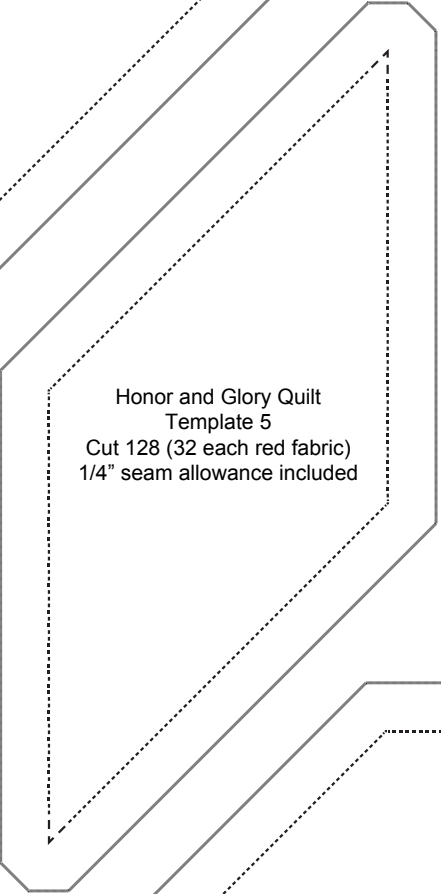




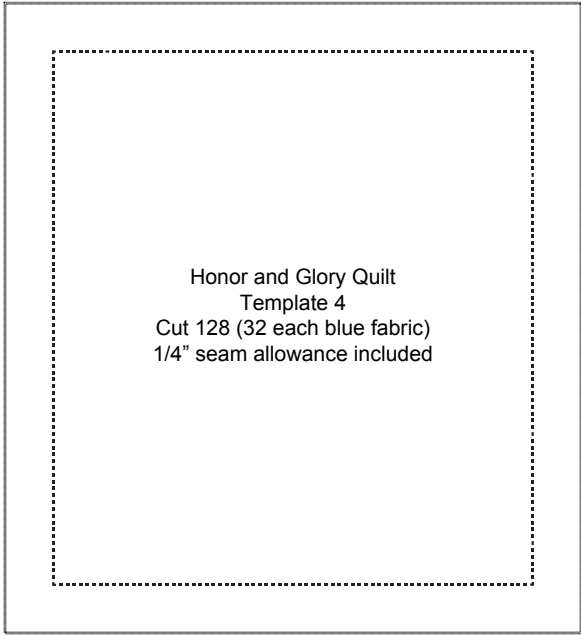
Honor and Glory Quilt  
Template 3  
Cut 16 (4 of each red fabric)  
1/4" seam allowance included



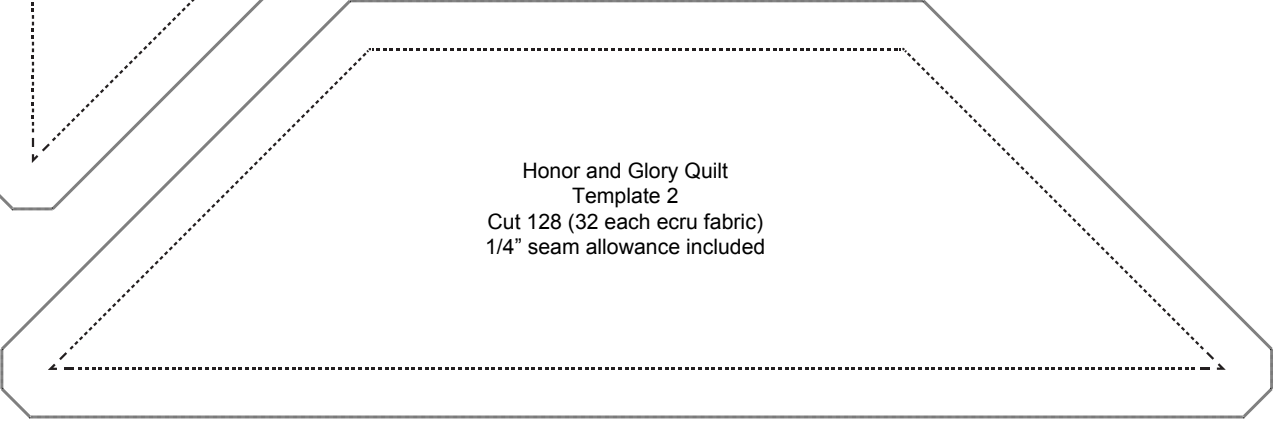
Honor and Glory Quilt  
Template 1  
Cut 64  
1/4" seam allowance included



Honor and Glory Quilt  
Template 5  
Cut 128 (32 each red fabric)  
1/4" seam allowance included



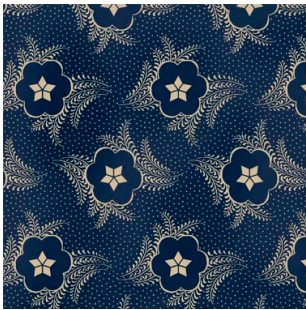
Honor and Glory Quilt  
Template 4  
Cut 128 (32 each blue fabric)  
1/4" seam allowance included



Honor and Glory Quilt  
Template 2  
Cut 128 (32 each ecru fabric)  
1/4" seam allowance included

# Gettysburg Era

Reproduction Fabric Collection By Sara Morgan



GERA 572 N



GERA 572 R



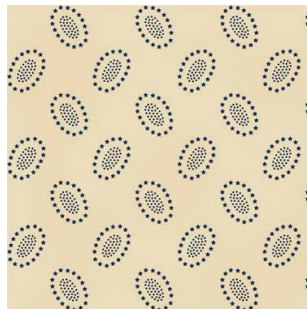
GERA 573 E



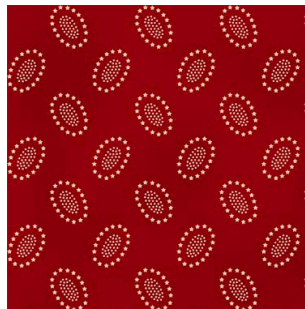
GERA 573 N



GERA 573 R



GERA 574 E



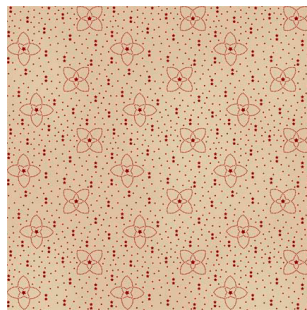
GERA 574 R



GERA 575 NE



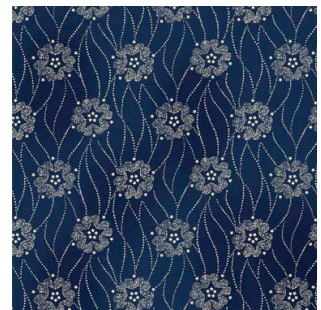
GERA 575 R



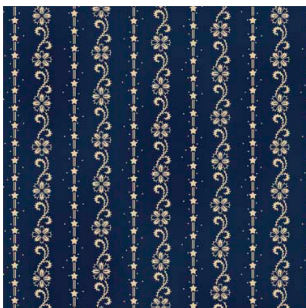
GERA 576 E



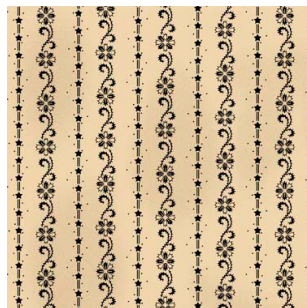
GERA 576 N



GERA 577 N



GERA 578 N



GERA 578 NE



GERA 578 R



VSOL 280 E\*

*Washington Street Studio*



A DIVISION OF P&B TEXTILES

Washington Street Studio • [www.pbtex.com/wss](http://www.pbtex.com/wss)

45-47 Washington Street, Pawtucket, RI 02860 • 800-351-9087

100% cotton

Cold wash & dry

43"/44"

Colors may vary due to printing process