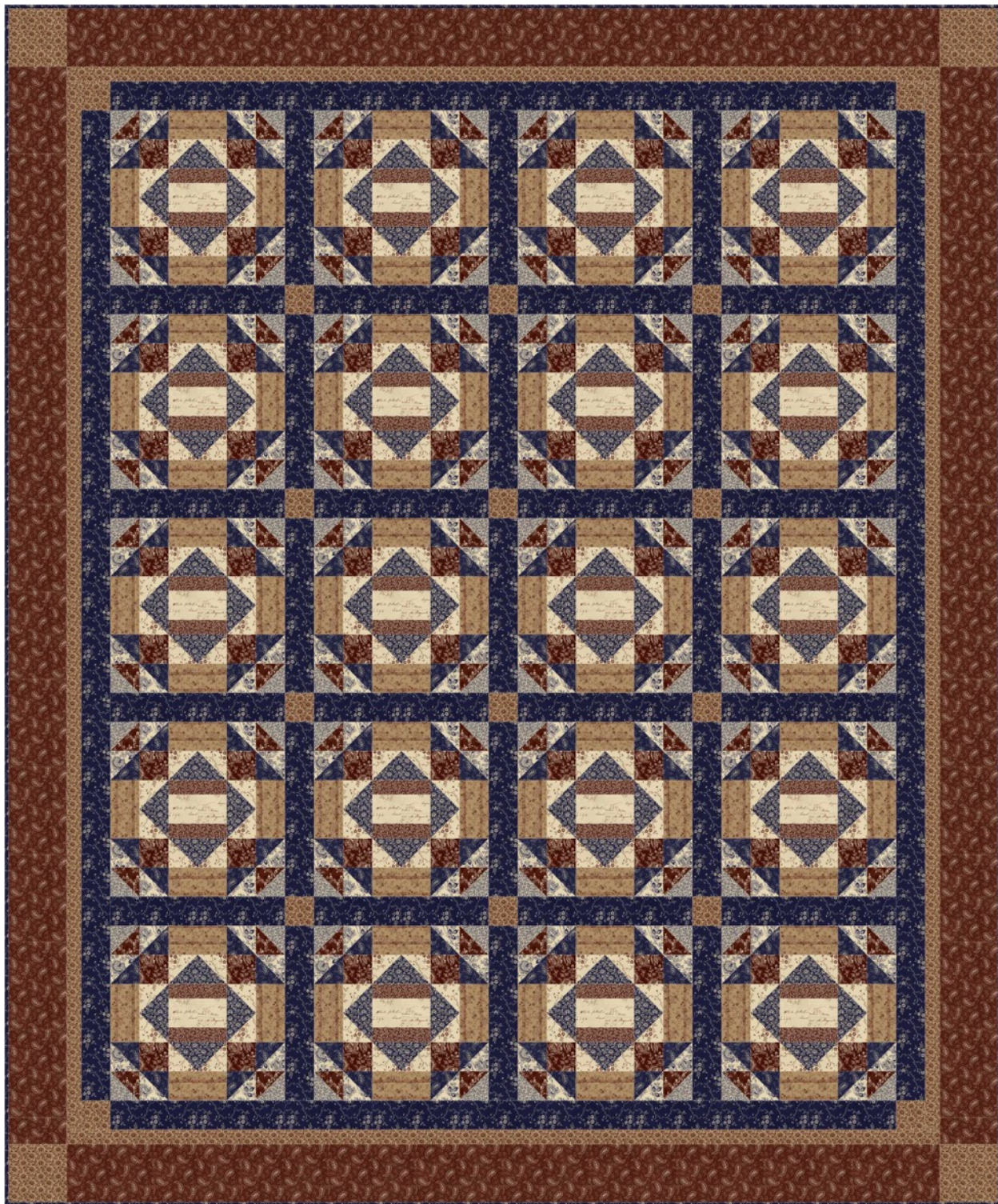


French Country

French Memories

Quilt by Kate Colleran



Washington Street Studio



A DIVISION OF P&B TEXTILES

Shown using fabrics from the line, **French Country**
by Sara Morgan for Washington Street Studio,
a division of P&B Textiles



Seams Like a Dream
QUILT DESIGNS

©2015 Kathleen C. Colleran

French Country

General instructions: Read through all directions before beginning. Sew using a $\frac{1}{4}$ " seam; seam allowances are built into the cutting directions. All pieces are sewn right sides together. Follow the arrows for pressing suggestions.

Yardage

Fabric A	FCOU 372 Z	$\frac{3}{8}$ yard
Fabric B	FCOU 373 Z	$\frac{3}{8}$ yard
Fabric C	FCOU 371 N	$\frac{1}{2}$ yard
Fabric D	FCOU 374 E	$\frac{5}{8}$ yard
Fabric E	FCOU 369 LZ	$\frac{3}{4}$ yard
Fabric F	FCOU 373 E	$\frac{3}{8}$ yard
Fabric G	FCOU 370 Z	$\frac{3}{8}$ yard
Fabric H	FCOU 368 E	$\frac{5}{8}$ yard
Fabric I	FCOU 370 N	$\frac{5}{8}$ yard
Fabric J	FCOU 367 Z	$\frac{1}{2}$ yard
Fabric K	FCOU 374 N	1 $\frac{1}{4}$ yards
Fabric L	FCOU 371 LZ	1 $\frac{1}{8}$ yards
Fabric M	FCOU 368 Z	1 $\frac{1}{8}$ yards

Backing	any FCOU fabric	5 $\frac{1}{8}$ yards
Batting	70" x 84"	

Cutting

All strips are cut across the width of the fabric.


From fabric A (FCOU 372 Z), cut:

3 strips 4 $\frac{1}{2}$ " x 42"; cut into 20 rectangles 4 $\frac{1}{2}$ " x 2 $\frac{1}{2}$ ".


From fabric B (FCOU 373 Z), cut:

2 strips 4 $\frac{1}{2}$ " x 42"; cut into 40 rectangles 4 $\frac{1}{2}$ " x 1 $\frac{1}{2}$ ".

From fabric C (FCOU 371 N), cut:

3 strips 5 $\frac{1}{4}$ " x 42"; cut into 20 squares 5 $\frac{1}{4}$ " x 5 $\frac{1}{4}$ ". Cut each square in half diagonally twice for 80 quarter square triangles (QST). 

From fabric D (FCOU 374 E), cut:

6 strips 2 $\frac{7}{8}$ " x 42"; cut into 80 squares 2 $\frac{7}{8}$ " x 2 $\frac{7}{8}$ ". Cut each square in half diagonally for 160 half square triangles (HST). 

From fabric E (FCOU 369 LZ), cut:

5 strips 4 $\frac{1}{2}$ " x 42"; cut into 80 rectangles 4 $\frac{1}{2}$ " x 2 $\frac{1}{2}$ ".

French Memories Quilt by Kate Colleran featuring the *French Country* collection by Sara Morgan for Washington Street Studio, a division of P&B Textiles.

Quilt Size: 68" x 82"

From fabric F (FCOU 373 E), cut:

3 strips 2 $\frac{7}{8}$ " x 42"; cut into 40 squares 2 $\frac{7}{8}$ " x 2 $\frac{7}{8}$ ".

From fabric G (FCOU 370 Z), cut:

3 strips 2 $\frac{7}{8}$ " x 42"; cut into 40 squares 2 $\frac{7}{8}$ " x 2 $\frac{7}{8}$ ".

From fabric H (FCOU 368 E), cut:

6 strips 2 $\frac{7}{8}$ " x 42"; cut into 80 squares 2 $\frac{7}{8}$ " x 2 $\frac{7}{8}$ ".

From fabric I (FCOU 370 N), cut:

6 strips 2 $\frac{7}{8}$ " x 42"; cut into 80 squares 2 $\frac{7}{8}$ " x 2 $\frac{7}{8}$ ".

From fabric J (FCOU 367 Z), cut:

5 strips 2 $\frac{1}{2}$ " x 42"; cut into 80 squares 2 $\frac{1}{2}$ " x 2 $\frac{1}{2}$ ".

From fabric K (FCOU 374 N), cut:

2 strips 12 $\frac{1}{2}$ " x 42"; cut into 31 sashing rectangles 12 $\frac{1}{2}$ " x 2 $\frac{1}{2}$ ".

7 strips 2 $\frac{1}{2}$ " x 42"; piece together and cut into 2 strips 2 $\frac{1}{2}$ " x 68 $\frac{1}{2}$ " for inner side borders and 2 strips 2 $\frac{1}{2}$ " x 54 $\frac{1}{2}$ " for inner top and bottom borders.

From fabric L (FCOU 371 LZ), cut:

1 strip 2 $\frac{1}{2}$ " x 42"; cut into 16 sashing squares 2 $\frac{1}{2}$ " x 2 $\frac{1}{2}$ ".

1 strip 4 $\frac{1}{2}$ " x 42"; cut into 4 border squares 4 $\frac{1}{2}$ " x 4 $\frac{1}{2}$ ".

7 strips 1 $\frac{1}{2}$ " x 42"; piece together and cut into 2 strips 1 $\frac{1}{2}$ " x 72 $\frac{1}{2}$ " for middle side borders and 2 strips 1 $\frac{1}{2}$ " x 60 $\frac{1}{2}$ " for middle top and bottom borders.

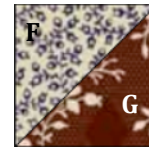
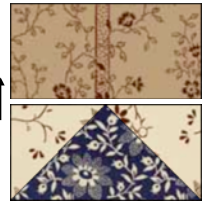
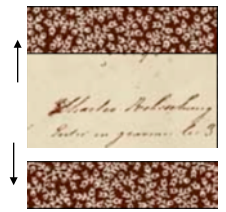
8 strips 2 $\frac{1}{4}$ " x 42"; piece together for double fold binding.

From fabric M (FCOU 368 Z), cut:

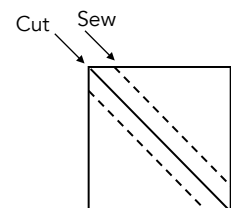
8 strips 4 $\frac{1}{2}$ " x 42"; piece together and cut into 2 strips 4 $\frac{1}{2}$ " x 74 $\frac{1}{2}$ " for outer side borders and 2 strips 4 $\frac{1}{2}$ " x 60 $\frac{1}{2}$ " for outer top and bottom borders.

Blocks

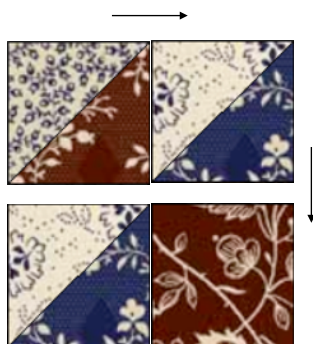
1. Sew a 1 1/2" x 4 1/2" fabric B rectangle to the top and bottom of a 2 1/2" x 4 1/2" fabric A rectangle. Make 20 center blocks.
2. Sew a fabric D half square triangle to both short sides of a fabric C quarter square triangle to make 1 flying geese unit (FG). The FG unit should measure 2 1/2" x 4 1/2". Make 4 FG units per block for a total of 80 FG units.
3. Sew a 2 1/2" x 4 1/2" fabric E rectangle to a FG unit from step 2. Make 80 units.
4. Layer one 2 7/8" fabric F square right sides together with a fabric G square. Draw a diagonal line on the wrong side of the fabric F square. Sew a 1/4" away from the line on both sides. Cut the square apart along the diagonal line to make 2 half square triangle units (HST) measuring 2 1/2" square. Repeat to make a total of 80 corner HST units.
5. Repeat step 1 with the 2 7/8" fabric H and fabric I squares to make 160 side HST units.
6. Refer to the corner unit assembly diagram and using the corner HSTs, the side HSTs and the 2 1/2" x 2 1/2" fabric J squares, make 80 corner units.
7. Refer to the block assembly diagram to sew the block together. The block should measure 12 1/2" x 12 1/2" square. Make 20 blocks.



Corner HST unit



Side HST unit



Corner Unit Assembly Diagram



Block Assembly Diagram

Quilt Assembly

1. Refer to the quilt assembly diagram. Sew the blocks into 5 rows of 4 blocks each, with the 2 ½" x 12 ½" fabric K sashing rectangles in between the blocks. Make 5 rows measuring 12 ½" x 54 ½".
2. Sew sashing rows alternating 4 fabric K sashing rectangles with 3 fabric L 2 ½" sashing squares. Make 4 sashing rows measuring 2 ½" x 54 ½".
3. Sew the rows together alternating block rows with sashing rows. The quilt top should measure 54 ½" x 68 ½".
4. Sew a 2 ½" x 68 ½" fabric K inner border to each side of the quilt. Sew a 2 ½" fabric L square to each end of a 2 ½" x 54 ½" fabric K inner border. Make 2 pieced borders and sew to the top and bottom of the quilt.
5. Sew the 1 ½" fabric L borders to the quilt first to the sides and then to the top and bottom.
6. Repeat step 4 with the 4 ½" fabric M borders and the 4 ½" fabric L squares. The quilt top should measure 68 ½" x 82 ½".
7. Layer the quilt top with batting and backing; baste. Quilt as desired. Using the 2 ¼" wide fabric K binding strips, bind the edges to finish.



Quilt Assembly Diagram

Kate Colleran Designs, LLC

seamslikeadream.com

info@seamslikeadream.com

Visit our website to see our whole line of patterns!