

Darling Ducklings

Ducklings & Pinwheels Quilt designed by Wendy Sheppard



Approximate size: 46" x 46"

Featuring fabrics from the Darling Ducklings fabric collection
by Raquel Maciel

P&B Textiles • pbtex.com • p800-351-9087 • 208 Clock Tower Square, Portsmouth, RI 02871



Darling Ducklings

Fabric collection by Raquel Maciel
Ducklings & Pinwheels Quilt designed by Wendy Sheppard
Finished size approximately: 46" x 46"

Yardage:

Fabric A	DDUC 5495 PA.....	1 panel
Fabric B	DDUC 5497 E.....	5/8 yard
Fabric C	DDUC 5498 T.....	1/8 yard
Fabric D	DDUC 5499 EB.....	1/8 yard
Fabric E	DDUC 5500 DT.....	1/4 yard
Fabric F	DDUC 5501 G.....	1/8 yard
Fabric G	DDUC 5501 R.....	* 1 yard
Fabric H	DDUC 5501 Y.....	1/8 yard
Fabric I	DDUC 5502 E.....	1 yard
Fabric J	DDUC 5502 T.....	1/8 yard
Backing	DDUC 5499 ER.....	3 1/8 yards

* Includes Binding

Cutting Instructions:

Please read all instructions carefully before beginning. Strips are cut across the width of fabric **WOF** (perpendicular to selvages) unless otherwise stated. All seams are sewn with 1/4" seam unless otherwise stated. Label all pieces.

Fabric A:

- Cut (12) 5 1/2" x 5 1/2" panel squares, centering designs. (Frame blocks)

Fabric B:

- Cut (4) 4 1/4" x WOF strips centering motifs within strips. Subcut (4) 4 1/4" x 38 1/2" strips. (Outer border)

Fabric C:

- Cut (1) 3 1/2" x WOF strip. Subcut (6) 3 1/2" x 3 1/2" squares. (Pinwheel block)

Fabric D:

- Cut (1) 3 1/2" x WOF strip. Subcut (6) 3 1/2" x 3 1/2" squares. (Pinwheel block)

Fabric E:

- Cut (2) 1 1/2" x WOF strips. Subcut (6) 1 1/2" x 5 1/2" and (6) 1 1/2" x 7 1/2" rectangles. (Frame blocks)
- Cut (1) 3 1/2" x WOF strip. Subcut (4) 3 1/2" x 3 1/2" squares. (Pinwheel blocks)

Fabric F:

- Cut (1) 3 1/2" x WOF strip. Subcut (6) 3 1/2" x 3 1/2" squares. (Pinwheel block)

Fabric G:

- Cut (1) 7 1/2" x WOF strip. Subcut (12) 1 1/2" x 7 1/2" and (12) 1 1/2" x 5 1/2" rectangles. (Frame blocks)
- Cut (4) 1" x WOF strips. Subcut (2) 1" x 37 1/2" and (2) 1" x 38 1/2" strips. (Inner border #2)
- Cut (1) 4 1/4" x WOF strip. Subcut (4) 4 1/4" x 4 1/4" squares. (Outer border corner patch blocks)
- Cut (6) 2 1/4" x WOF strips. Piece strips to make a binding strip. (Binding)

Fabric H:

- Cut (2) 1 1/2" x WOF strips. Subcut (6) 1 1/2" x 5 1/2" and (6) 1 1/2" x 7 1/2" rectangles. (Frame blocks)

Fabric I:

- Cut (3) 3 1/2" x WOF strips. Subcut (26) 3 1/2" x 3 1/2" squares. (Pinwheel blocks)
- Cut (1) 5 1/2" x WOF strip. Subcut (26) 1 1/2" x 5 1/2" rectangles. (Pinwheel blocks)
- Cut (1) 7 1/2" x WOF strip. Subcut (26) 1 1/2" x 7 1/2" rectangles. (Pinwheel blocks)
- Cut (4) 1 1/2" x WOF strips. Subcut (2) 1 1/2" x 35 1/2" and (2) 1 1/2" x 37 1/2" strips. (Inner border)

Fabric J:

- Cut (1) 3 1/2" x WOF strips. Subcut (4) 3 1/2" x 3 1/2" squares. (Pinwheel blocks)

Piecing Instructions:

Frame blocks

1. Sew (1) 1 1/2" x 5 1/2" **Fabric H** rectangle to the left, and (1) 1 1/2" x 5 1/2" **Fabric G** rectangle to the right of (1) 5 1/2" x 5 1/2" **Fabric A** square.

Then, sew (1) 1 1/2" x 7 1/2" **Fabric G** rectangle to the top, and (1) 1 1/2" x 7 1/2" **Fabric H** rectangle to the bottom to complete (1) frame block. Block measures 7 1/2" x 7 1/2" unfinished.

Refer to quilt image for specific **Fabric A** squares used, make a total of (6) blocks using **Fabric G** and **H** framing pieces, and (6) blocks using **Fabric G** and **Fabric E** framing pieces.



Diagram 1

Pinwheel blocks

1. Draw a diagonal line on the wrong side of (1) $3\frac{1}{2}$ " x $3\frac{1}{2}$ " **Fabric C**. Place square, right sides together, on (1) $3\frac{1}{2}$ " x $3\frac{1}{2}$ " **Fabric I** square. Sew $\frac{1}{4}$ " away from both sides of drawn line. Cut along drawn line to yield (2) HST units. Open and press. Align diagonal seams of units against 45-degree line on quilting ruler, square and trim units to measure 3 " x 3 " unfinished. Make a total of (4) units.

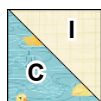


Diagram 2

2. Sew together step 1 units to make a pinwheel unit. Then sew (2) $1\frac{1}{2}$ " x $5\frac{1}{2}$ " **Fabric I** rectangles to the opposite sides of pinwheel unit, followed by (2) $1\frac{1}{2}$ " x $7\frac{1}{2}$ " **Fabric I** rectangles to the remaining opposite sides of pinwheel unit to complete (1) pinwheel block. Block measures $7\frac{1}{2}$ " x $7\frac{1}{2}$ " unfinished.

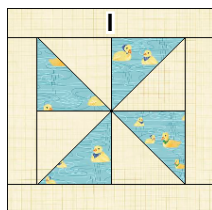


Diagram 3

Make a total number of blocks for the following fabrics:

3 blocks Fabric C	3 blocks Fabric D	3 blocks Fabric F	2 blocks Fabric E	2 blocks Fabric J

Diagram 4

Quilt Assembly:

Note: Border strips are sewn to the opposite sides of the quilt. Center and sew shorter strips first, followed by longer strips on the remaining sides.

1. Referring to quilt image for block placement guide, arrange and sew together (5) pieced blocks to make a pieced row. Make a total of (5) pieced rows.
2. Sew together pieced rows to complete quilt center.



Diagram 5

3. **Inner border #1. Fabric I.** (2) $1\frac{1}{2}$ " x $35\frac{1}{2}$ " strips, then (2) $1\frac{1}{2}$ " x $37\frac{1}{2}$ " strips.
4. **Inner border #2. Fabric G.** (2) 1 " x $37\frac{1}{2}$ " strips, then (2) 1 " x $38\frac{1}{2}$ " strips.
5. **Outer border.** Sew (2) $4\frac{1}{4}$ " x $38\frac{1}{2}$ " **Fabric B** strips to the left and right sides of quilt center. Sew (2) $4\frac{1}{4}$ " x $4\frac{1}{4}$ " **Fabric G** squares to the opposite short sides of (1) $4\frac{1}{4}$ " x $38\frac{1}{2}$ " **Fabric B** strip to make a pieced row. Make (2) pieced rows, and sew to the top and bottom of quilt center to complete quilt top.

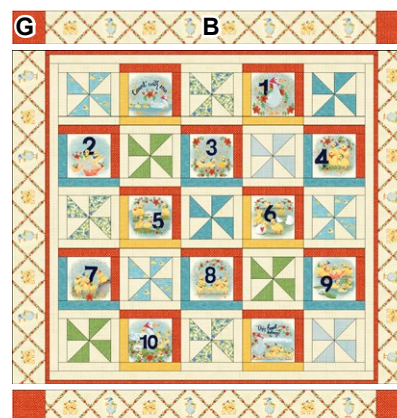


Diagram 6

Finishing:

1. Layer backing, batting and quilt top.
2. Baste the layers together. Quilt as desired.
3. Bind to complete the quilt.



Quilt Diagram

Darling Ducklings

Fabric Collection by
Raquel Maciel



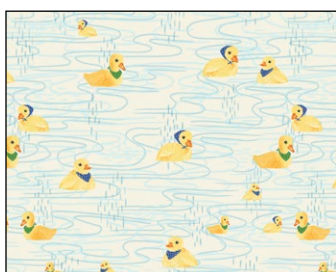
DDUC 5495 PA
Fabric A



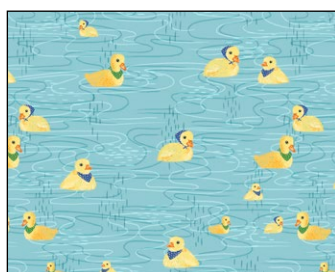
DDUC 5496 T



DDUC 5497 E
Fabric B



DDUC 5498 E



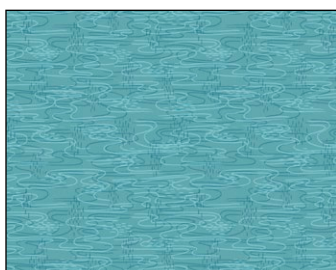
DDUC 5498 T
Fabric C



DDUC 5499 EB
Fabric D



DDUC 5499 ER †
Backing



DDUC 5500 DT
Fabric E



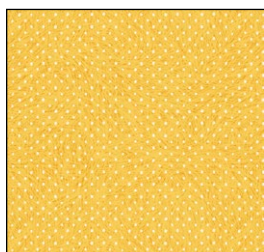
DDUC 5501 B



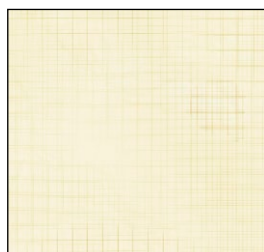
DDUC 5501 G
Fabric F



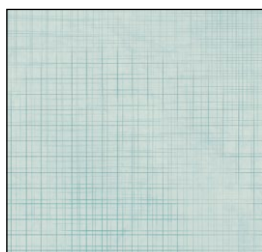
DDUC 5501 R *
Fabric G



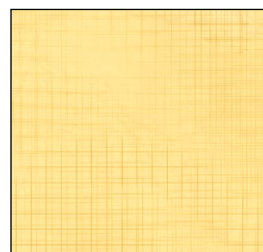
DDUC 5501 Y
Fabric H



DDUC 5502 E
Fabric I



DDUC 5502 T
Fabric J



DDUC 5502 Y

Quilt Fabrics in Bold

* Binding

† Backing

P&B Textiles • pbtex.com • p800-351-9087 • 208 Clock Tower Square, Portsmouth, RI 02871

