



Dargate Jellies c. 1830

Fabric Collection by Margo Krager
Ring O' Rosies quilt design by Toby Lischko



Quilt size: approximately 52" x 68"

Washington Street Studio



Dargate Jellies c. 1830

by Margo Krager

Ring O' Rosies quilt design by Toby Lischko

Skill Level: Confident Beginner • Finished Block Size: 8" square • Finished Quilt Size: 52" x 68"

Yardage Requirements:

Fabric A: DAJE 3152 B	Fat Quarter
Fabric B: DAJE 3152 G	Fat Quarter
Fabric C: DAJE 3152 P	Fat Quarter
Fabric D: DAJE 3152 Y	Fat Quarter
Fabric E: DAJE 3153 B	Fat Quarter
Fabric F: DAJE 3153 G	Fat Quarter
Fabric G: DAJE 3153 R	Fat Quarter
Fabric H: DAJE 3154 B	Fat Quarter
Fabric I: DAJE 3154 R	Fat Quarter
Fabric J: DAJE 3154 YY	Fat Quarter
Fabric K: DAJE 3155 G	Fat Quarter
Fabric L: DAJE 3155 R	Fat Quarter
Fabric M: DAJE 3155 YY	Fat Quarter
Fabric N: DAJE 3156 B	Fat Quarter
Fabric O: DAJE 3156 G	Fat Quarter
Fabric P: DAJE 3152 E	2 1/2 yards
Backing (DAJE 3155 MU suggested):	3 1/2 yards
Batting:	60" x 76"

Additional supplies: Template plastic:
light double-sided fusible web

Cutting Instructions:

Please read all instructions carefully before beginning. Strips are cut across the width of fabric unless otherwise stated. LOF - parallel to selvages. All seams are sewn with a 1/4" seam unless otherwise stated.

Fabric A-O: All sixteen Fat Quarters

1. Cut first (1) 2 1/4" x 20" strip from 14 of the fat quarters for binding.
2. Cut (4) 4 3/4" squares from each and (4) extra from any one of them.
3. Cut (10) 4 1/2" x 12 1/2" rectangles and (8) 4 1/2" x 11 1/2" rectangles from fat quarters.
4. Cut (4) 4 1/2" x 4 1/2" from any four different fabrics.

Fabric P: DAJE 3152 E

1. Cut first from LOF: (2) 2 1/2" x 44 1/2" and (2) 2 1/2" x 56 1/2".
2. From the remainder: cut (17) 9" squares and (18) B circles with template.

Fusible web:

1. Cut (18) B rings with template.
2. Cut (17) A rings with template.

Piecing Instructions:

Block A Assembly

1. Mix and match the 4 3/4" print squares and sew together to create a four-patch unit (Figure 1). Press. Make 18.
2. Center A full circle template on four-patch, trace around outside circle and cut out (Figure 2).
3. Following manufacturers instructions, fuse the A ring of fusible web to the back of the A circle four-patch, then center and fuse to front of 9" P square (Figure 3). Make 17. **Tip:** Crease the P squares in quarters to find the center.

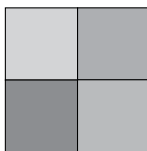


Figure 1
Make 18.

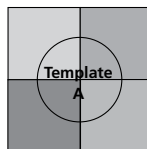


Figure 2

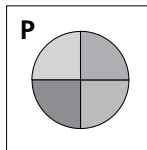


Figure 3
Make 17.

Block B Assembly

1. Fuse the B ring of fusible web to the front of the B circle. Fuse to the back of the four-patch hole (Figure 4).
2. Trim all A and B blocks to 8 1/2" square.
3. Use a buttonhole or decorative stitch around the print edge on both A and B blocks (Figure 5).

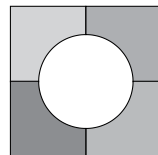


Figure 4

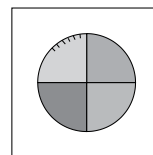
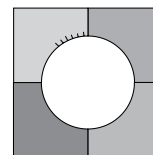


Figure 5



Quilt Assembly: (Refer to quilt diagram)

1. Following the quilt diagram, place Blocks A and B, five across and five down, alternating them in each row.

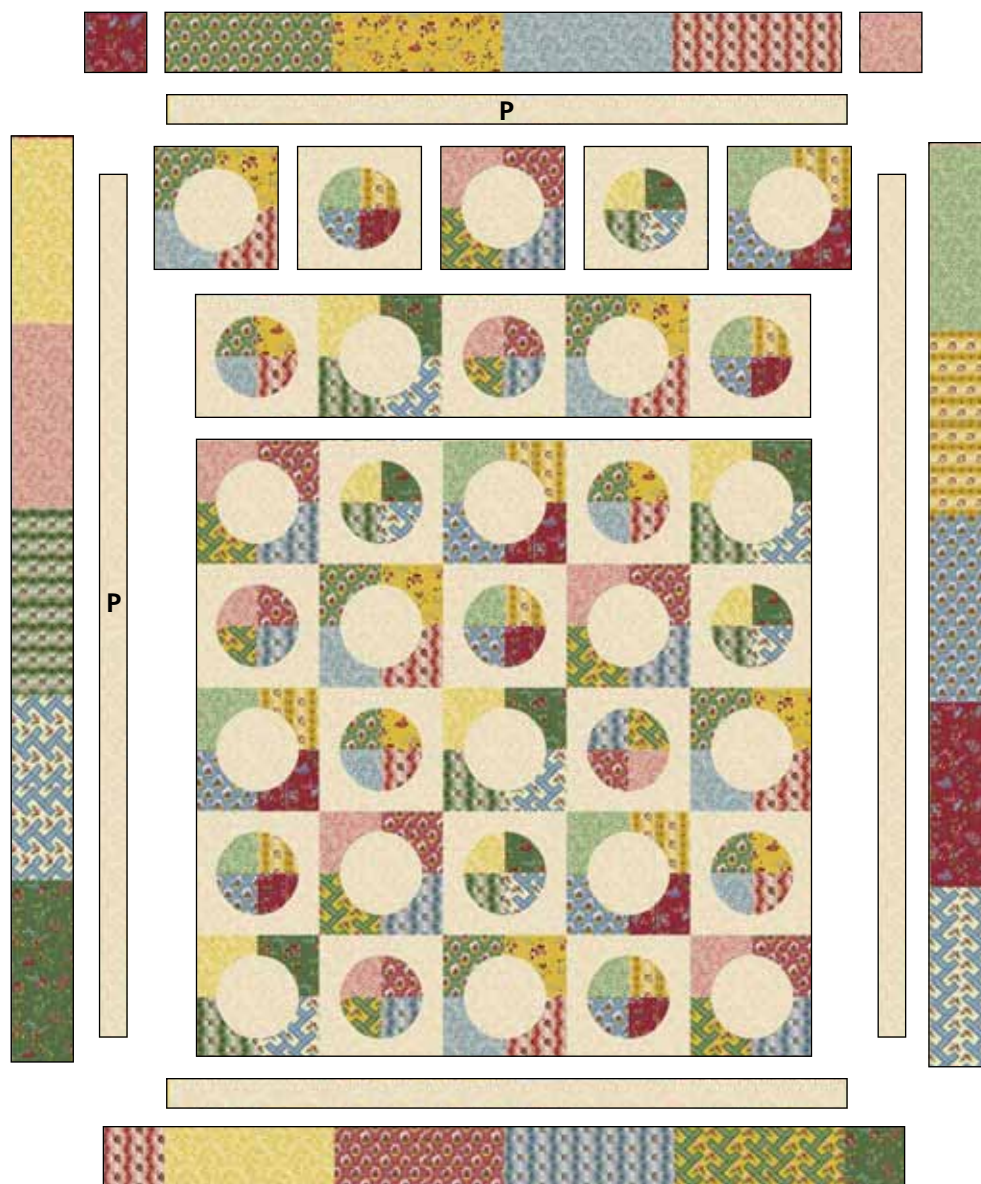


2. Sew blocks together. Press toward A Block.
3. Sew rows together matching seams. Press in either direction.
4. Sew (2) 2 1/2" x 56 1/2" P strips to either side of the quilt. Press seams toward border.
5. Sew (2) 2 1/2" x 44 1/2" P strips to the top and bottom of the quilt. Press seams toward border.
6. Sew two groups of (5) 4 1/2" x 12 1/2" rectangles along short ends to form side borders. Sew to either side. Press toward border.
7. Sew two groups of (4) 4 1/2" x 11 1/2" rectangles along short ends to form top and bottom borders. Sew a 4 1/2" print square to each end. Sew to top and bottom. Press.

Finishing:

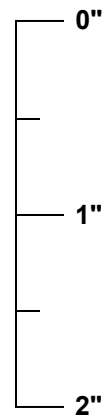
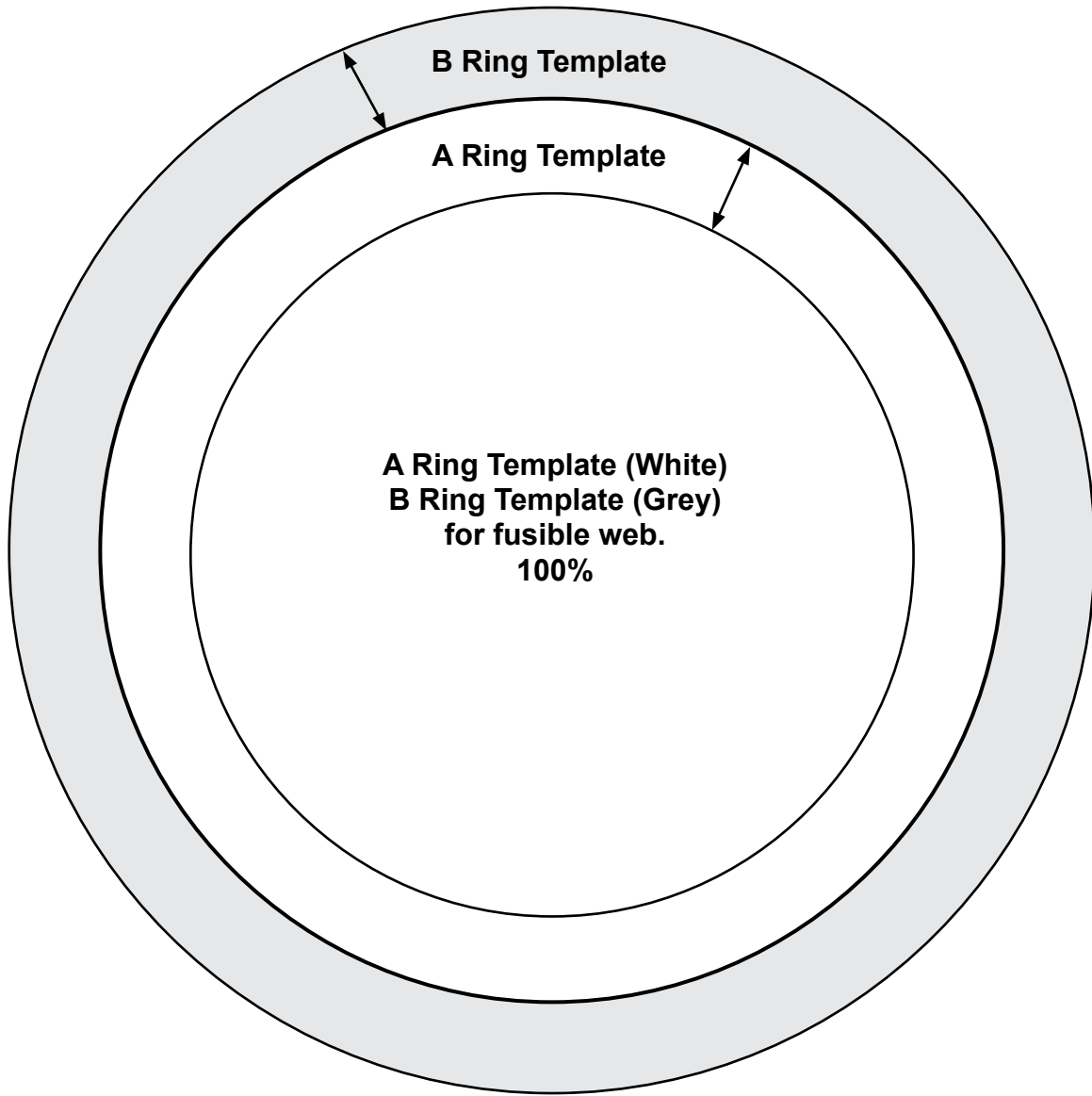
1. Press fabric well. Prepare backing to measure 60" x 76" with a horizontal seam.
2. Layer backing, batting and quilt top. Baste layers together.
3. Quilt as desired.
4. Trim layers even with top.
5. Join (14) 2 1/4" x 20" binding strips with diagonal seams. Press seams open. Press strip in half lengthwise with wrong sides together to make double-fold binding. Sew binding to quilt using your favorite method.
6. Make a label and sew to back of the quilt.

Visit Toby Lischko at: www.gatewayquiltsnstuff.com

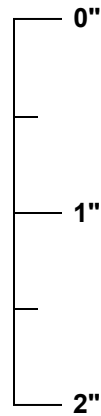
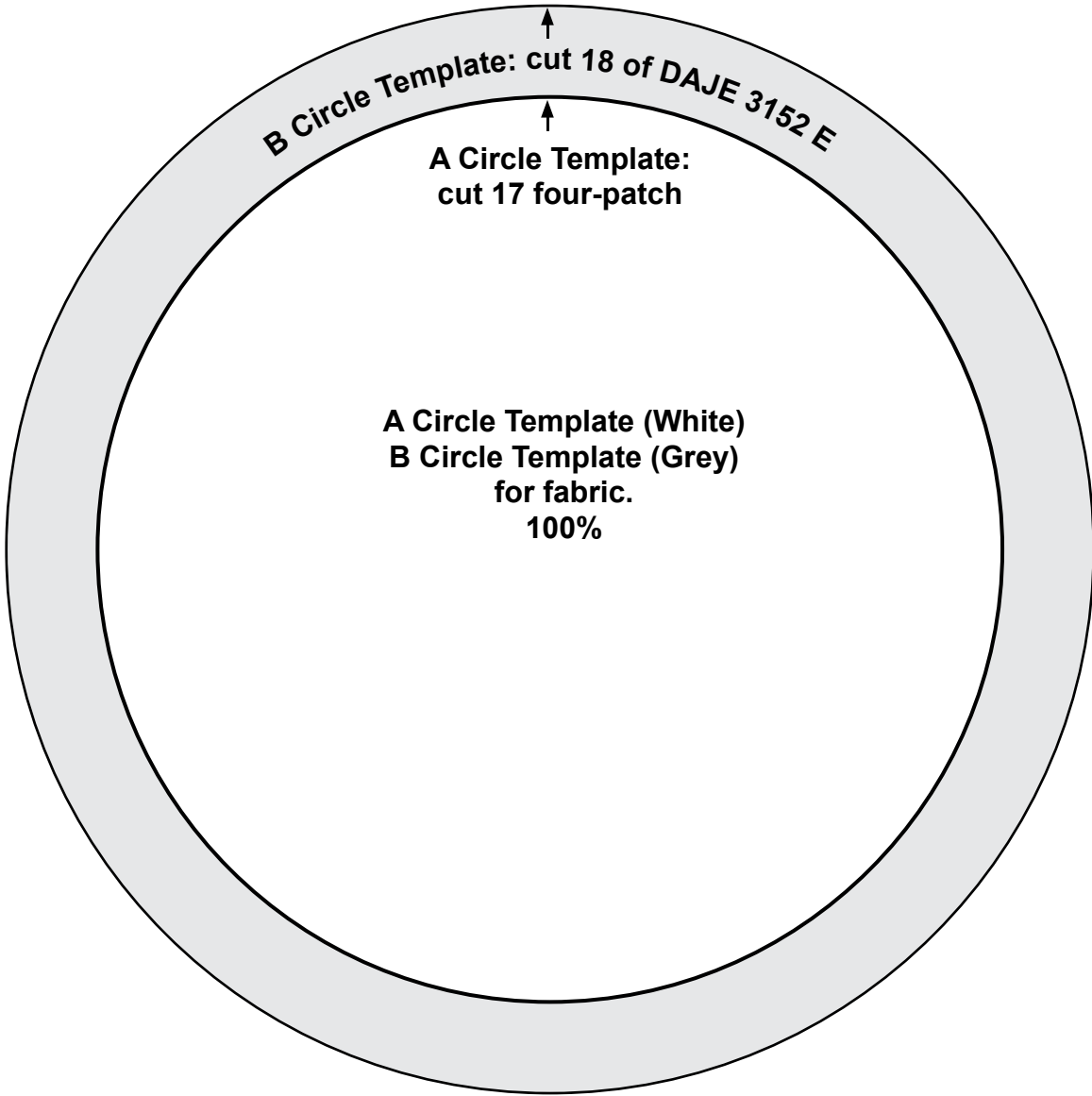


Quilt Diagram





Scale Check for pdf files. When you print these templates, this ruler should measure 2 inches long. If it does not, change, "page scaling" to "none" in the print dialog box.



Scale Check for pdf files. When you print these templates, this ruler should measure 2 inches long. If it does not, change, "page scaling" to "none" in the print dialog box.

Dargate Jellies c. 1830

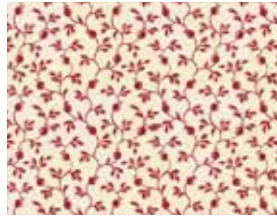
Fabric Collection
by Margo Krager



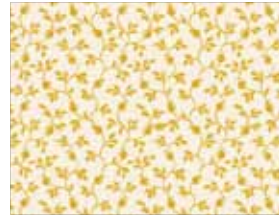
DAJE 3151 B



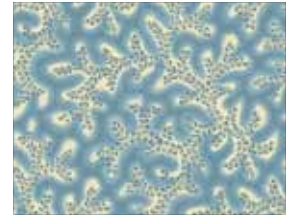
DAJE 3151 G



DAJE 3151 R



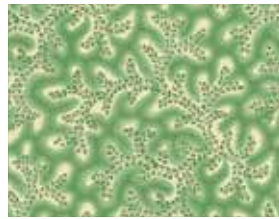
DAJE 3151 Y



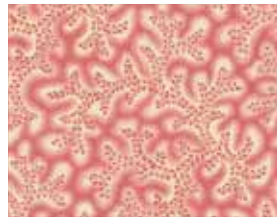
DAJE 3152 B*



DAJE 3152 E*



DAJE 3152 G*



DAJE 3152 P*



DAJE 3152 Y*



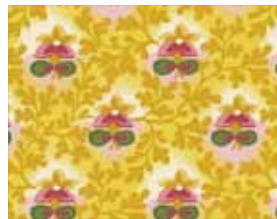
DAJE 3153 B



DAJE 3153 G*



DAJE 3153 R*



DAJE 3153 YY



DAJE 3154 B*



DAJE 3154 G



DAJE 3154 R*



DAJE 3154 YY*



DAJE 3155 G*



DAJE 3155 MU†



DAJE 3155 R*



DAJE 3155 YY*



DAJE 3156 B*



DAJE 3156 G*



DAJE 3156 R

Washington Street Studio



* Used in project
† Suggested backing

www.washingtonstreetstudio.com

Washington Street Studio • 208 Clock Tower Square, Portsmouth, RI 02871 • 800-351-9087

△ 100% cotton ♦ Cold wash & dry ♦ 43" / 44" ♦ Colors may vary due to printing process