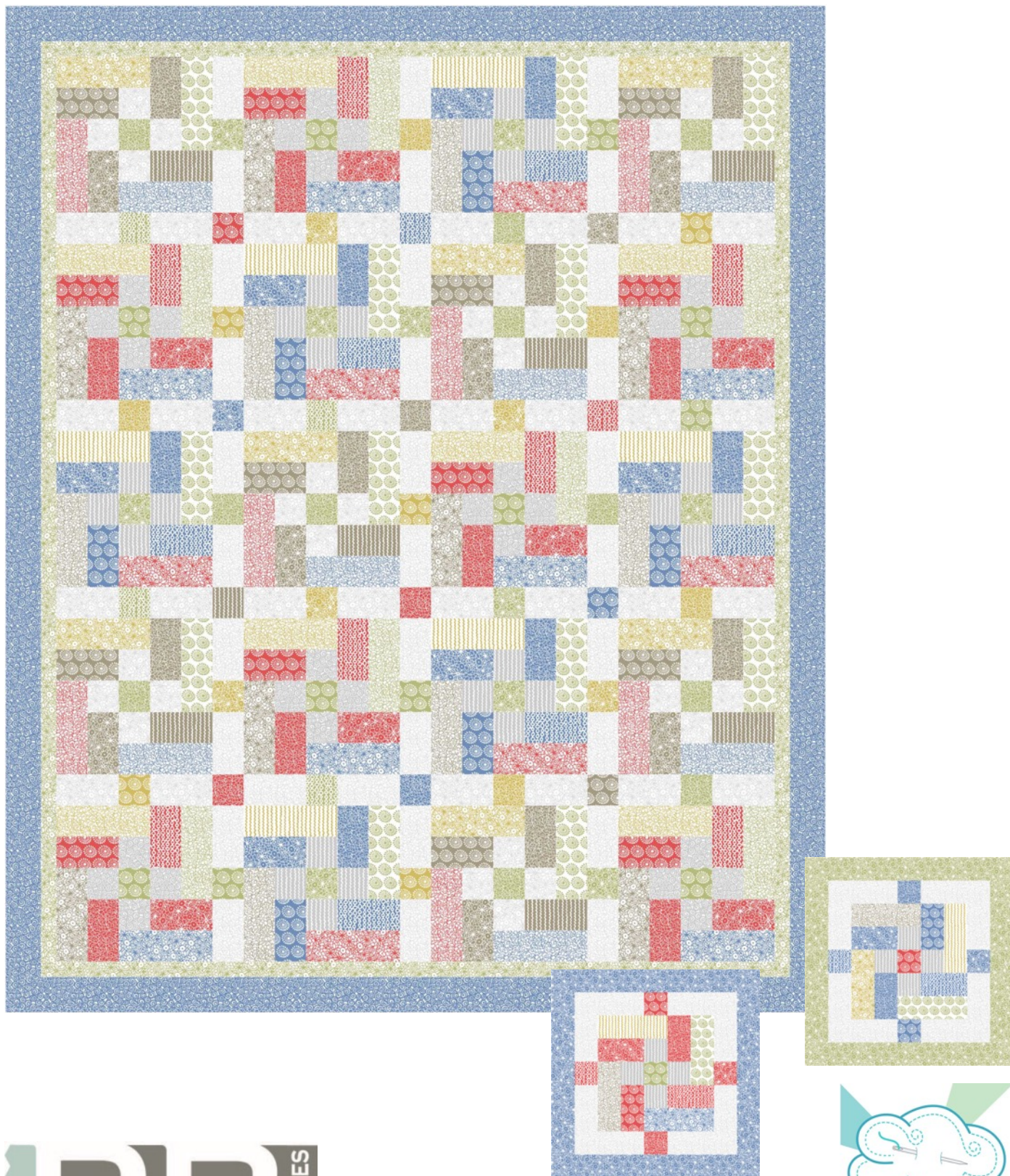


Urban Scandinavian

Colored Pieces Quilt and Pillows by Kate Colleran



Shown using fabrics from the line, **Urban Scandinavian**,
by Kirstyn Cogan for P&B Textiles



Urban Scandinavian

General instructions: Read through all directions before beginning. Sew using a ¼" seam; seam allowances are built into the cutting directions. All pieces are sewn right sides together.

Yardage

Fabric A	USCA 363 WS	½ yard
Fabric B	USCA 361 DST	⅛ yard
Fabric C	USCA 363 WU	¼ yard
Fabric D	USCA 364 DST	⅛ yard
Fabric E	USCA 361 WG	⅜ yard
Fabric F	USCA 366 DST	⅛ yard
Fabric G	USCA 364 WB	¼ yard
Fabric H	USCA 363 DST	⅛ yard
Fabric I	USCA 364 WR	¼ yard
Fabric J	USCA 364 GW	⅛ yard
Fabric K	USCA 365 WS	¼ yard
Fabric L	USCA 361 RW	⅛ yard
Fabric M	USCA 364 WU	¼ yard
Fabric N	USCA 362 RW	⅛ yard
Fabric O	USCA 364 WG	¼ yard
Fabric P	USCA 363 RW	⅛ yard
Fabric Q	USCA 363 WB	¼ yard
Fabric R	USCA 364 RW	⅛ yard
Fabric S	USCA 363 LST	¼ yard
Fabric T	USCA 361 GW	⅛ yard
Fabric U	USCA 366 SW	¼ yard
Fabric V	USCA 363 BW	⅛ yard
Fabric W	USCA 366 WU	⅛ yard
Fabric X	USCA 364 BW	⅝ yard
Fabric Y	USCA 362 BW	⅛ yard
Fabric Z	USCA 363 WR	⅛ yard
Fabric AA	USCA 361 BW	⅛ yard
Fabric BB	USCA 364 LST	⅛ yard
Fabric CC	USCA 363 GW	⅛ yard
Fabric DD	USCA 364 WS	⅜ yard
Fabric EE	USCA 364 UW	⅛ yard
Fabric FF	USCA 362 GW	⅛ yard
Fabric GG	USCA 363 UW	⅛ yard
Fabric HH	USCA 361 UW	⅛ yard
Fabric II	USCA 363 WG	⅜ yard
Fabric JJ	USCA 365 WB	⅝ yard
Backing	any USCA fabric	3 ½ yards

Colored Pieces Quilt by Kate Colleran
featuring the *Urban Scandinavian* collection
by Kirstyn Cogan for P&B Textiles.
Quilt Size: 52" x 64"

Cutting

All strips are cut across the width of the fabric.

From fabric A (USCA 363 WS), cut:

(6) 2 ½" x 42" strips; cut into (28) 2 ½" squares and (32) 2 ½" x 4 ½" rectangles.

From fabric B (USCA 361 DST), cut:

(1) 2 ½" x 42" strip; cut into (1) 2 ½" square and (7) 2 ½" x 4 ½" rectangles.

From fabric C (USCA 363 WU), cut:

(2) 2 ½" x 42" strips; cut into (7) 2 ½" x 6 ½" rectangles.

From fabric D (USCA 364 DST), cut:

(1) 2 ½" x 42" strip; cut into (1) 2 ½" square and (7) 2 ½" x 4 ½" rectangles.

From fabric E (USCA 361 WG), cut:

(3) 2 ½" x 42" strips; cut into (13) 2 ½" x 6 ½" rectangles.

From fabric F (USCA 366 DST), cut:

(1) 2 ½" x 42" strip; cut into (1) 2 ½" square and (7) 2 ½" x 4 ½" rectangles.

From fabric G (USCA 364 WB), cut:

(2) 2 ½" x 42" strips; cut into (7) 2 ½" x 6 ½" rectangles.

From fabric H (USCA 363 DST), cut:

(1) 2 ½" x 42" strip; cut into (1) 2 ½" square and (7) 2 ½" x 4 ½" rectangles.

From fabric I (USCA 364 WR), cut:

(2) 2 ½" x 42" strips; cut into (7) 2 ½" x 6 ½" rectangles.

From fabric J (USCA 364 GW), cut:

(1) 2 ½" x 42" strip; cut into (11) 2 ½" squares.

From fabric K (USCA 365 WS), cut:

(2) 2 ½" x 42" strips; cut into (28) 2 ½" squares.

From fabric L (USCA 361 RW), cut:

(1) 2 ½" x 42" strip; cut into (1) 2 ½" square and
(7) 2 ½" x 4 ½" rectangles.

From fabric M (USCA 364 WU), cut:

(2) 2 ½" x 42" strips; cut into (7) 2 ½" x 6 ½"
rectangles.

From fabric N (USCA 362 RW), cut:

(1) 2 ½" x 42" strip; cut into (1) 2 ½" square and
(7) 2 ½" x 4 ½" rectangles.

From fabric O (USCA 364 WG), cut:

(2) 2 ½" x 42" strips; cut into (7) 2 ½" x 6 ½"
rectangles.

From fabric P (USCA 363 RW), cut:

(1) 2 ½" x 42" strip; cut into (1) 2 ½" square and
(7) 2 ½" x 4 ½" rectangles.

From fabric Q (USCA 363 WB), cut:

(2) 2 ½" x 42" strips; cut into (7) 2 ½" x 6 ½"
rectangles.

From fabric R (USCA 364 RW), cut:

(1) 2 ½" x 42" strip; cut into (1) 2 ½" square and
(7) 2 ½" x 4 ½" rectangles.

From fabric S (USCA 363 LST), cut:

(2) 2 ½" x 42" strips; cut into (7) 2 ½" x 6 ½"
rectangles.

From fabric T (USCA 361 GW), cut:

(1) 2 ½" x 42" strip; cut into (11) 2 ½" squares.

From fabric U (USCA 366 SW), cut:

(2) 2 ½" x 42" strips; cut into (24) 2 ½" squares.

From fabric V (USCA 363 BW), cut:

(1) 2 ½" x 42" strip; cut into (1) 2 ½" square and
(6) 2 ½" x 4 ½" rectangles.

From fabric W (USCA 366 WU), cut:

(1) 2 ½" x 42" strip; cut into (6) 2 ½" x 6 ½"
rectangles.

From fabric X (USCA 364 BW), cut:

(1) 2 ½" x 42" strip; cut into (1) 2 ½" square and
(6) 2 ½" x 4 ½" rectangles.

(7) 2 ¼" x 42" strips; piece together for binding.

From fabric Y (USCA 362 BW), cut:

(1) 2 ½" x 42" strip; cut into (1) 2 ½" square and
(6) 2 ½" x 4 ½" rectangles.

From fabric Z (USCA 363 WR), cut:

(1) 2 ½" x 42" strip; cut into (6) 2 ½" x 6 ½"
rectangles.

From fabric AA (USCA 361 BW), cut:

(1) 2 ½" x 42" strip; cut into (1) 2 ½" square and
(6) 2 ½" x 4 ½" rectangles.

From fabric BB (USCA 364 LST), cut:

(1) 2 ½" x 42" strip; cut into (6) 2 ½" x 6 ½"
rectangles.

From fabric CC (USCA 363 GW), cut:

(1) 2 ½" x 42" strip; cut into (10) 2 ½" squares.

From fabric DD (USCA 364 WS), cut:

(4) 2 ½" x 42" strips; cut into (30) 2 ½" x 4 ½"
rectangles.

From fabric EE (USCA 364 UW), cut:

(1) 2 ½" x 42" strip; cut into (5) 2 ½" sashing
squares.

From fabric FF (USCA 362 GW), cut:

(1) 2 ½" x 42" strip; cut into (4) 2 ½" sashing
squares.

From fabric GG (USCA 363 UW), cut:

(1) 2 ½" x 42" strip; cut into (5) 2 ½" sashing
squares.

From fabric HH (USCA 361 UW), cut:

(1) 2 ½" x 42" strip; cut into (5) 2 ½" sashing
squares.

From fabric II (USCA 363 WG), cut:

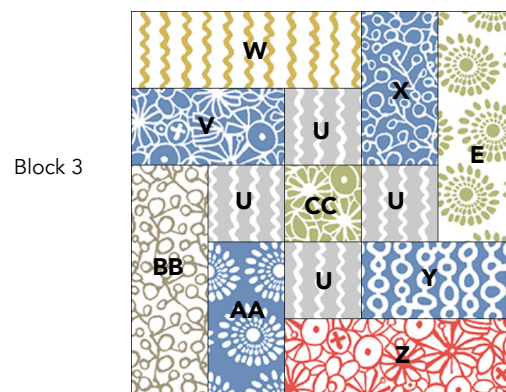
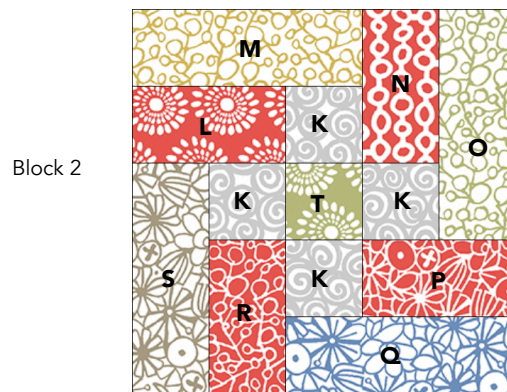
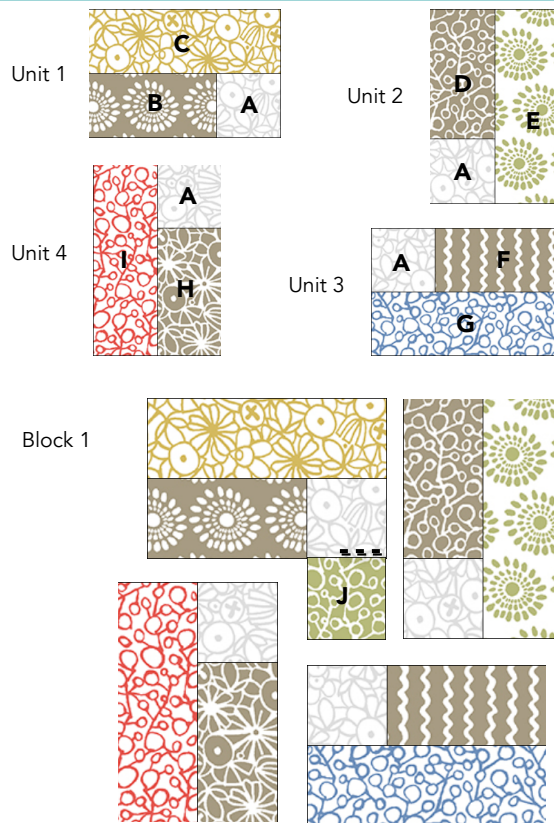
(6) 1 1/2" x 42" strips; piece together for and cut into (2) 1 1/2" x 58 1/2" inner side borders and (2) 1 1/2" x 48 1/2" inner top and bottom borders.

From fabric JJ (USCA 365 WB), cut:

(7) 2 1/2" x 42" strips; piece together for and cut into (2) 2 1/2" x 60 1/2" inner side borders and (2) 2 1/2" x 52 1/2" inner top and bottom borders.

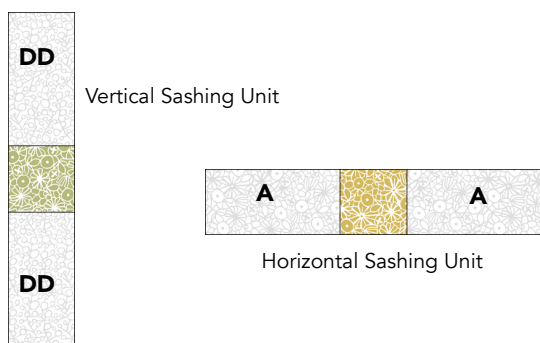
Blocks

1. Sew a 2 1/2" fabric A square to a 2 1/2" x 4 1/2" fabric B rectangle.
2. Sew a 2 1/2" x 6 1/2" fabric C rectangle to the unit from step 1. Unit 1 should measure 4 1/2" x 6 1/2".
3. Following the block diagram, make unit 2, unit 3 and unit 4 in the same manner.
4. Sew a unit 1 to a 2 1/2" fabric J square with a partial seam.
5. Sew unit 2 to the block, then unit 3 and unit 4. Finish the partial seam for unit 1. Block 1 should measure 10 1/2" square. Make 7 of block 1.
6. Follow the block diagrams and in the same manner as block 1, make 7 of block 2 and 6 of block 3.



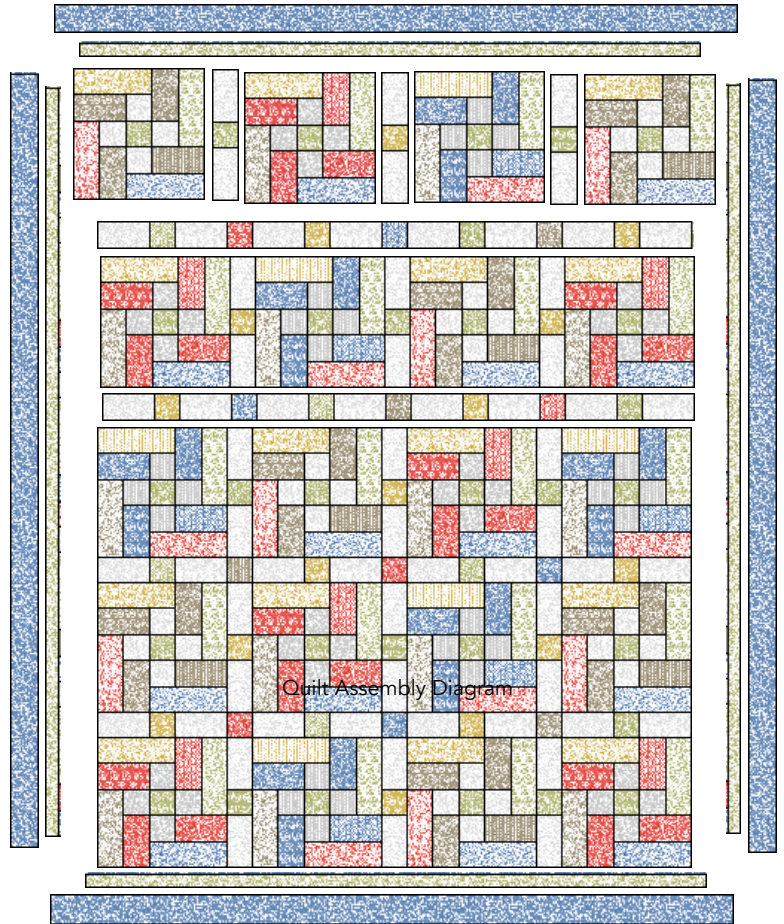
Sashing Units

1. Sew a 2 1/2" x 4 1/2" fabric DD rectangle to each side of leftover green and light umber 2 1/2" squares. Make 15 vertical sashing units.
2. Sew a 2 1/2" x 4 1/2" fabric A rectangle to each side of leftover green and light umber 2 1/2" squares. Make 16 horizontal sashing units.



Quilt Assembly

1. Refer to the quilt assembly diagram. Sew the blocks into 5 rows of 4 blocks each, alternating blocks 1, 2, and 3 with green and umber vertical sashing units in between. Make 5 rows measuring 10 ½" x 46 ½".
2. Sew sashing rows alternating green and umber horizontal sashing units with the 2 ½" red, blue and taupe squares in between the sashing units. Make 4 sashing rows measuring 2 ½" x 46 ½".
3. Sew the rows together alternating block rows with sashing rows. the quilt top should measure 46 ½" x 58 ½".
4. Sew a 1 ½" x 58 ½" fabric II inner border to each side of the quilt. Sew the 1 ½" x 48 ½" fabric II inner borders to the top and bottom of the quilt.
5. Sew the 2 ½" fabric JJ borders to the quilt in the same manner. the quilt top



Urban Scandinavian

6. Layer the quilt top with batting and backing; baste. Quilt as desired. Using the 2 ¼" wide fabric X binding strips, bind the edges to finish.

Pattern by Kate Colleran for P&B Textiles

Fabric A	USCA 366 SW	⅛ yard
Fabric B	USCA 363 RW	⅛ yard
Fabric C	USCA 366 WU	⅛ yard
Fabric D	USCA 364 RW	⅛ yard
Fabric E	USCA 361 WG	⅛ yard
Fabric F	USCA 362 RW	⅛ yard
Fabric G	USCA 363 WB	⅛ yard
Fabric H	USCA 361 RW	⅛ yard
Fabric I	USCA 364 LST	⅛ yard
Fabric J	USCA 361 GW	⅛ yard

Colored Pieces Pillows by Kate Colleran featuring the *Urban Scandinavian* collection by Kirstyn Cogan for P&B Textiles.
Pillow Size: 18" x 18"

Fabric K	USCA 364 WS	⅜ yard
Fabric L	USCA 363 BW	⅜ yard
Fabric M	USCA 361 BW	⅛ yard
Fabric N	USCA 362 BW	⅛ yard
Fabric O	USCA 364 BW	⅛ yard
Fabric P	USCA 363 WU	⅛ yard
Fabric Q	USCA 363 GW	¼ yard
Backing	any USCA fabric	¾ yard
Batting- (2) 20" squares		
Pillow Forms- (2) 18" square forms		

Cutting

All strips are cut across the width of the fabric.

From fabric A (USCA 366 SW), cut:

(1) 2 1/2" x 42" strip; cut into (8) 2 1/2" squares.

From fabric B (USCA 363 RW), cut:

(1) 2 1/2" x 42" strip; cut into (1) 2 1/2" square and (1) 2 1/2" x 4 1/2" rectangle.

From fabric C (USCA 366 WU), cut:

(1) 2 1/2" x 42" strip; cut into (2) 2 1/2" x 6 1/2" rectangles.

From fabric D (USCA 364 RW), cut:

(1) 2 1/2" x 42" strip; cut into (1) 2 1/2" square and (1) 2 1/2" x 4 1/2" rectangle.

From fabric E (USCA 361 WG), cut:

(1) 2 1/2" x 42" strip; cut into (2) 2 1/2" x 6 1/2" rectangles.

From fabric F (USCA 362 RW), cut:

(1) 2 1/2" x 42" strip; cut into (1) 2 1/2" square and (1) 2 1/2" x 4 1/2" rectangle.

From fabric G (USCA 363 WB), cut:

(1) 2 1/2" x 42" strip; cut into (1) 2 1/2" x 6 1/2" rectangle.

From fabric H (USCA 361 RW), cut:

(1) 2 1/2" x 42" strip; cut into (2) 2 1/2" squares and (1) 2 1/2" x 4 1/2" rectangle.

From fabric I (USCA 364 LST), cut:

(1) 2 1/2" x 42" strip; cut into (2) 2 1/2" x 6 1/2" rectangles.

From fabric J (USCA 361 GW), cut:

(1) 2 1/2" x 42" strip; cut into (1) 2 1/2" square.

From fabric K (USCA 364 WS), cut:

(3) 2 1/2" x 42" strips; cut into (8) 2 1/2" x 4 1/2" rectangles and (8) 2 1/2" x 6 1/2" rectangles.

From fabric L (USCA 363 BW), cut:

(3) 2 1/2" x 42" strips; cut into (1) 2 1/2" square, (1) 2 1/2" x 4 1/2" rectangle, and (2) 2 1/2" x 14 1/2" side borders and (2) 2 1/2" x 18 1/2" top and bottom borders for pillow 1.

From fabric M (USCA 361 BW), cut:

(1) 2 1/2" x 42" strip; cut into (1) 2 1/2" square and (1) 2 1/2" x 4 1/2" rectangle.

From fabric N (USCA 362 BW), cut:

(1) 2 1/2" x 42" strip; cut into (1) 2 1/2" square and (1) 2 1/2" x 4 1/2" rectangle.

From fabric O (USCA 364 BW), cut:

(1) 2 1/2" x 42" strip; cut into (1) 2 1/2" square and (1) 2 1/2" x 4 1/2" rectangle.

From fabric P (USCA 363 WU), cut:

(1) 2 1/2" x 42" strip; cut into (1) 2 1/2" x 6 1/2" rectangle.

From fabric Q (USCA 363 GW), cut:

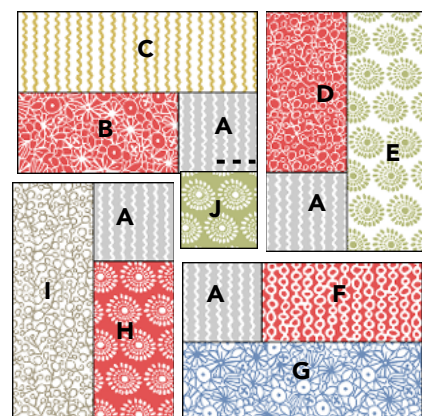
(2) 2 1/2" x 42" strips; cut into (2) 2 1/2" x 14 1/2" side borders and (2) 2 1/2" x 18 1/2" top and bottom borders for pillow 2.

From backing fabric, cut:

(2) 12 1/2" x 42" strips; cut into (4) 12 1/2" x 18 1/2" pillow back pieces.

Blocks

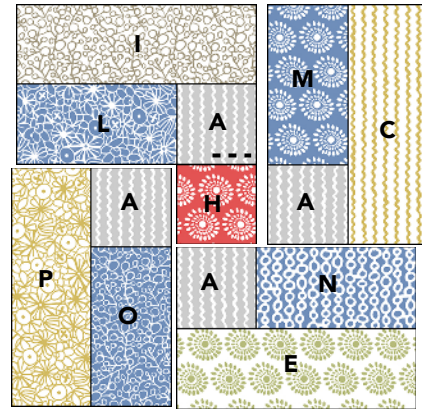
1. Follow the block diagrams and make one each of block 1 and block 2 following the block instructions on page 4.



Block 1 Diagram

Sashing Units

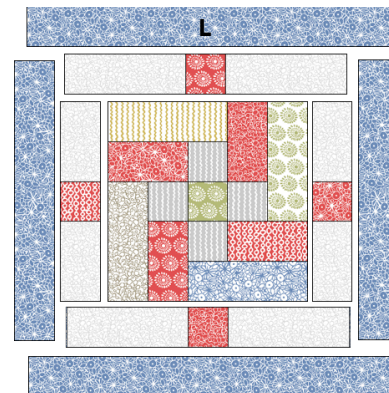
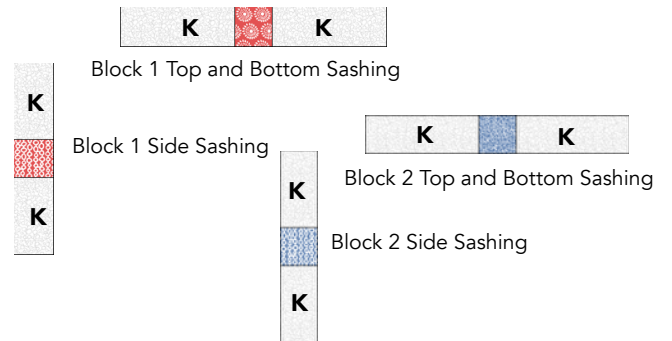
1. Sew a 2 1/2" x 4 1/2" fabric K rectangle to either side of a 2 1/2" red print square. Make 2 side sashing units.
2. Sew a 2 1/2" x 6 1/2" fabric K rectangle to either side of a 2 1/2" red print square. Make 2 top and bottom sashing units.
3. Repeat steps 2 and 3 with the fabric K rectangles and the 2 1/2" blue print squares.



Block 2 Diagram

Pillow 1

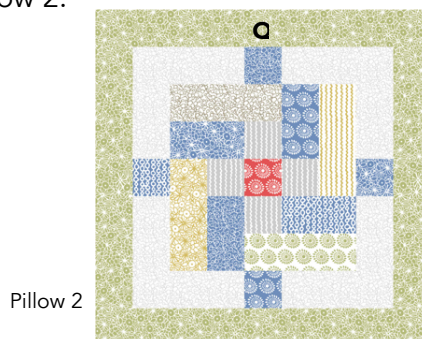
1. Follow the pillow 1 diagram and sew a side sashing to each side of block 1. Sew the top and bottom sashing to the block.
2. Sew a 2 1/2" x 14 1/2" fabric L side border to each side of the pillow top. Sew the 2 1/2" x 18 1/2" fabric L top and bottom borders to the pillow top. The pillow top should measure 18 1/2" square.
3. Layer the pillow top with batting; baste and quilt as desired. Trim the batting even with the pillow top edges.
4. On both pillow back piece, finish one 18 1/2" edge by folding the edge under 1/4" twice and then topstitching about 1/8" away from the edge.
5. Layer the pillow front right sides together with the pillow back pieces, matching raw edges and overlapping the finished edges of the pillow backs. Sew around all 4 sides of the pillow. Clip the corner seams to reduce bulk. Use a zip zap or overcast stitch to finish the raw edges, if desired.
6. Turn the pillow right sides out, push out the corners and insert the pillow form. Done!



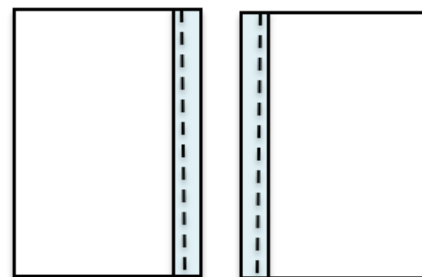
Pillow 1 Assembly Diagram

Pillow 2

1. Refer to the pillow 2 diagram and repeat the same process to make pillow 2.



Pillow 2



Pillow Backs

Seams Like A Dream Quilt Designs

seamslikeadream.com

info@seamslikeadream.com

Visit our website to see our whole line of patterns!

Urban Scandinavian

Fabric collection by **Kirstyn Cogan**



USCA 361 BW



USCA 361 DST



USCA 361 GW



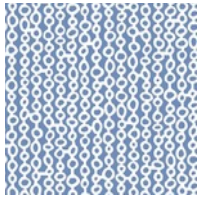
USCA 361 RW



USCA 361 UW



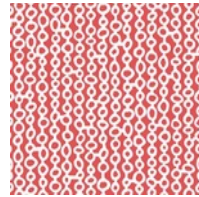
USCA 361 WG



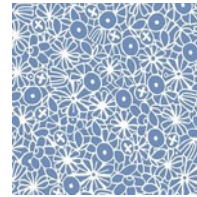
USCA 362 BW



USCA 362 GW



USCA 362 RW



USCA 363 BW



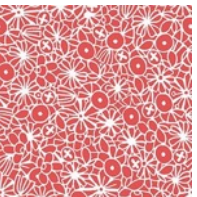
USCA 363 DST



USCA 363 GW



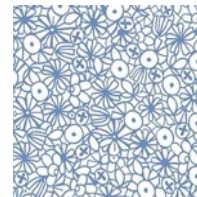
USCA 363 LST



USCA 363 RW



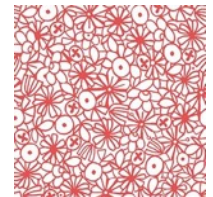
USCA 363 UW



USCA 363 WB



USCA 363 WG



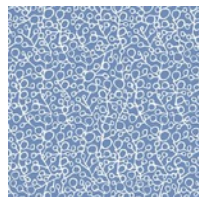
USCA 363 WR



USCA 363 WS



USCA 363 WU



USCA 364 BW



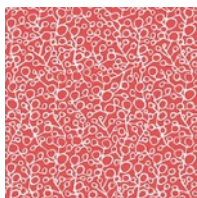
USCA 364 DST



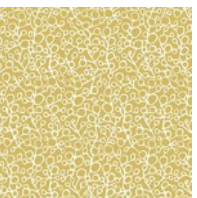
USCA 364 GW



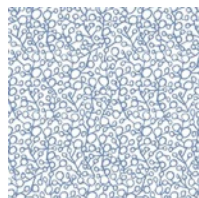
USCA 364 LST



USCA 364 RW



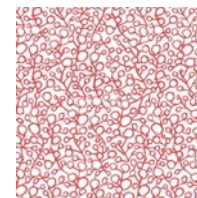
USCA 364 UW



USCA 364 WB



USCA 364 WG



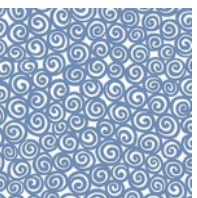
USCA 364 WR



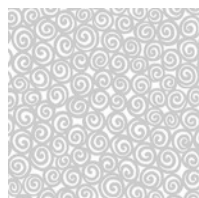
USCA 364 WS



USCA 364 WU



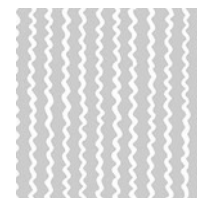
USCA 365 WB



USCA 365 WS



USCA 366 DST



USCA 366 SW



USCA 366 WU



P&B Textiles

45-47 Washington St., Pawtucket, RI 02860
100% cotton

◆ www.pbtex.com

◆ Cold wash & dry
◆ 43"/44"

◆ 800-351-9087

◆ 253 W. 35th St., 11th floor. New York, NY 10001
◆ Colors may vary due to printing process

06/15