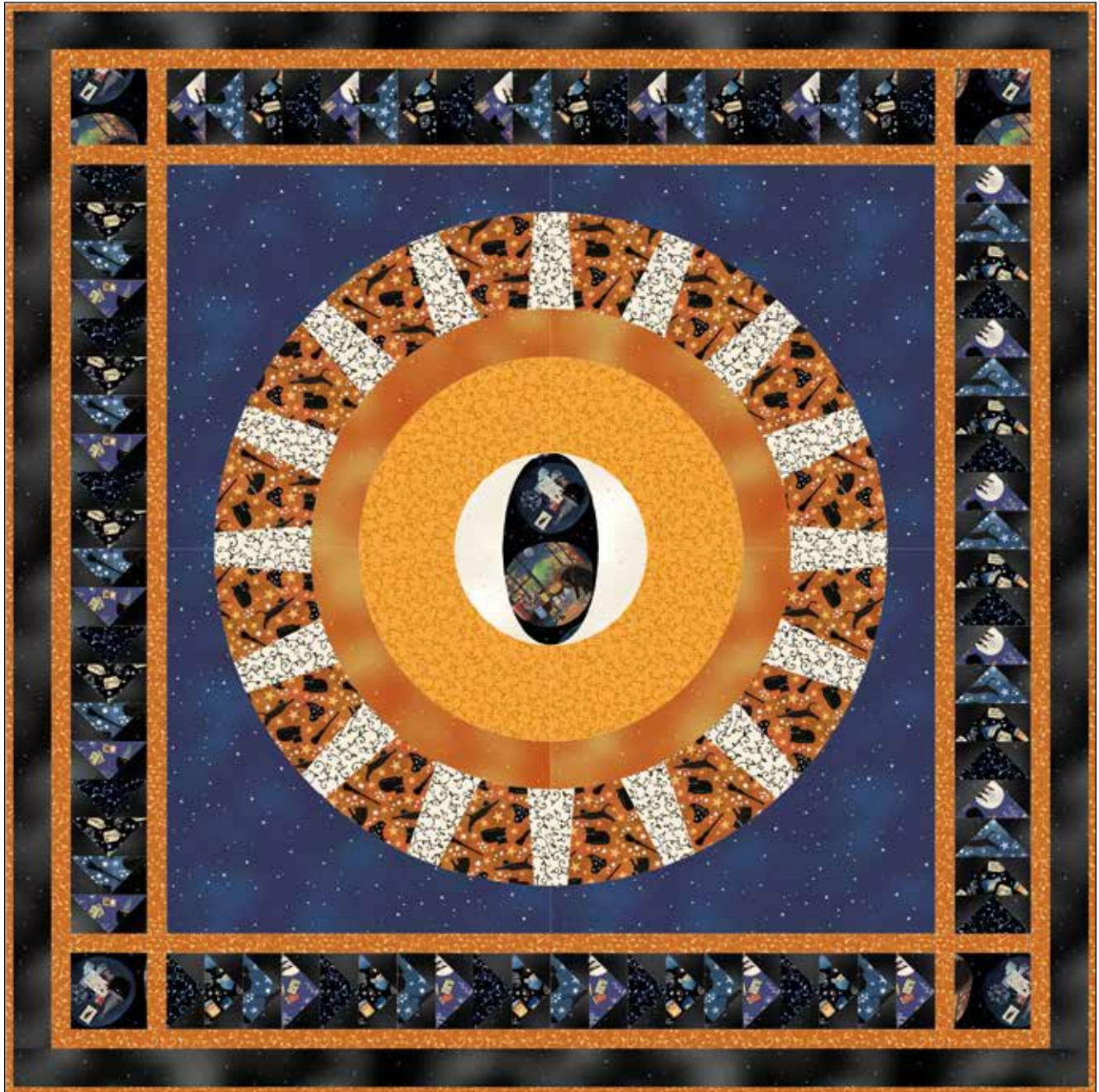


Practical Magic

Beholder Quilt Design by Stacey Day



Quilt size: approximately 56" x 56"

Featuring Fabrics: Practical Magic
by Jacqueline Wild



P&B Textiles • pbtex.com • p800-351-9087 • 208 Clock Tower Square, Portsmouth, RI 02871

Practical Magic

Fabric Collection by Jacqueline Wild

Quilt designed by Stacey Day

Finished Quilt Size: approximately 56" x 56"

Quilt Yardages:

Fabric A	PMAG 5360 K.....	1/4 yard
Fabric B	PMAG 5361 V.....	1/4 yard
Fabric C	PMAG 5362 B.....	1/4 yard
Fabric D	PMAG 5362 O.....	5/8 yard
Fabric E	PMAG 5363 K.....	1/4 yard
Fabric F	PMAG 5364 E.....	1/2 yard
Fabric G	PMAG 5364 K.....	1/4 yard
Fabric H	PMAG 5364 LO.....	3/4 yard
Fabric I	PMAG 5364 O.....	1 yard
Fabric J	PMAG 5365 BV.....	1 1/2 yards
Fabric K	PMAG 5365 E.....	1/4 yard
Fabric L	PMAG 5365 K.....	1 1/4 yards
Fabric M	PMAG 5365 O.....	7/8 yard
Backing	3 5/8 yards

Fabric J:

- Cut (4) Template 7

Fabric K:

- Cut (4) Template 1

Fabric L:

- Cut (7) 2 7/8" x WOF strips; subcut (80) 2 7/8" x 2 7/8"
- Cut (6) 2 1/2" x WOF; sew together end to end and subcut (2) 2 1/2" x 52 1/2" and (2) 2 1/2" x 56 1/2"

Fabric M:

- Cut (4) Template 3

Piecing Instructions:

The arrows in figures represent the fabric print direction. Pay attention to the fabric and unit orientations while assembling the various components.

1. Sew (4) Fabric D Template 4 pieces, (3) Fabric F Template 5 pieces, (1) Template 6, and (1) template 6r piece together as shown to make an A Unit. Make (4) A Units.

Cutting Instructions:

Please read all instructions carefully before beginning. Strips are cut across the width of fabric (perpendicular to selvages) unless otherwise stated. All seams are sewn with 1/4" seam unless otherwise stated. Label all pieces.

Fabric A

- Cut (1) piece from Template 8
- Cut (4) 4 1/2" x 4 1/2" squares

Fabric B, C, E, and G:

- Cut (1) 5 1/4" x WOF strip; cut (5) 5 1/4" x 5 1/4" squares

Fabric D:

- Cut (16) Template 4

Fabric F:

- Cut (12) Template 5
- Cut (4) Template 6
- Cut (4) Template 6r (right side down)

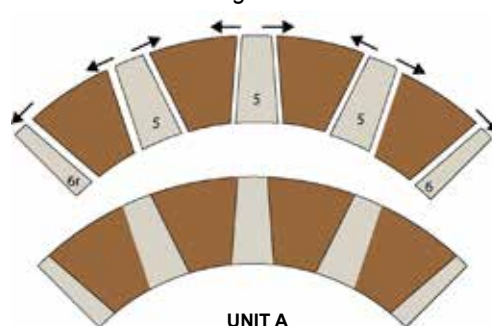
Fabric H:

- Cut (4) Template 2

Fabric I:

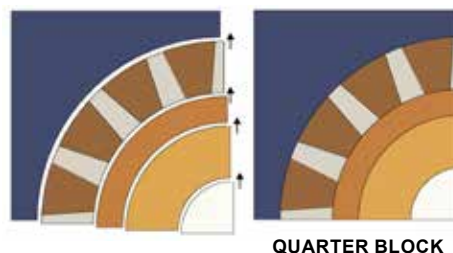
- Cut (6) 1 1/2" x WOF strips; sew together end to end and subcut (4) 1 1/2" x 52 1/2" strips
- Cut (4) 1 1/2" x 40 1/2" strips
- Cut (1) 1 1/2", subcut (8) 1 1/2" x 4 1/2" rectangles
- Cut (6) 2 1/4" x WOF; sew together end to end using diagonal seams and set aside as binding

Figure 1



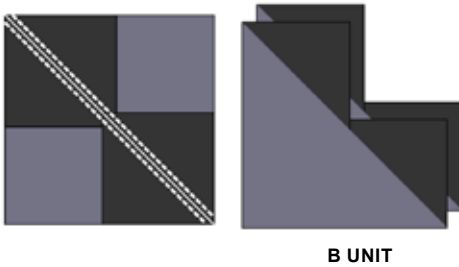
2. Sew (1) Fabric K Template 1, (1) Fabric H Template 2, (1) Fabric M template 3, (1) A Unit, and (1) Fabric J Template 7 together as shown into a Quarter Block. Make (4) Quarter blocks. Set aside.

Figure 2



- Draw a diagonal line across each Fabric L $2\frac{7}{8}$ " square. Pin (2) squares RST with a Fabric B $5\frac{1}{4}$ " square as shown. Sew $\frac{1}{4}$ " on either side of the drawn line, cut on the line, and press towards Fabric B to make (2) B Units.

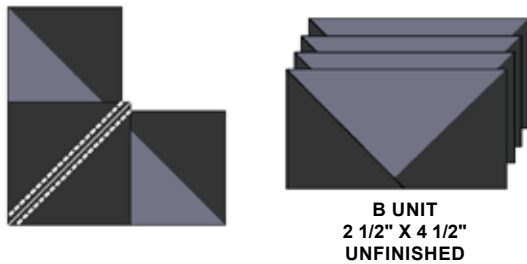
Figure 3



B UNIT

- Pin a Fabric L square to each B Unit as shown. Sew $\frac{1}{4}$ " on either side of the drawn line, cut on the line, and press towards Fabric L to make (4) completed B Units. Repeat with each Fabric B, C, E and G $5\frac{1}{4}$ " square to make (20) B Units each.

Figure 4



B UNIT
2 1/2" X 4 1/2"
UNFINISHED

- Sew (1) B Unit each of Fabric B, C, E and G together as shown into a Geese Block. Make (20) Geese Blocks.

Figure 5

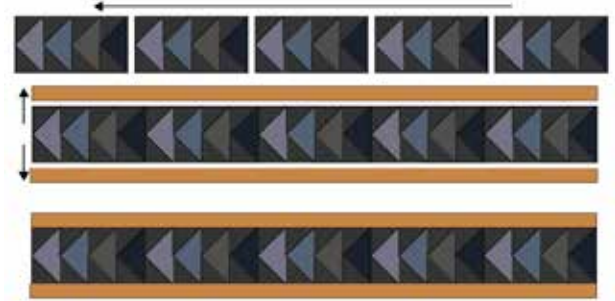


GEESE BLOCK

- Sew (5) geese blocks together into a Border Strip. Make (4). Sew (1) Fabric I $1\frac{1}{2}$ " x $40\frac{1}{2}$ " to either side of a Border strip to make the vertical border. Make (2).

- Sew (4) Fabric I $1\frac{1}{2}$ " x $4\frac{1}{2}$ " rectangles, (2) Fabric A squares, and (2) border strip together to make the Horizontal Borders. Make (2).

Figure 6



VERTICAL BORDER

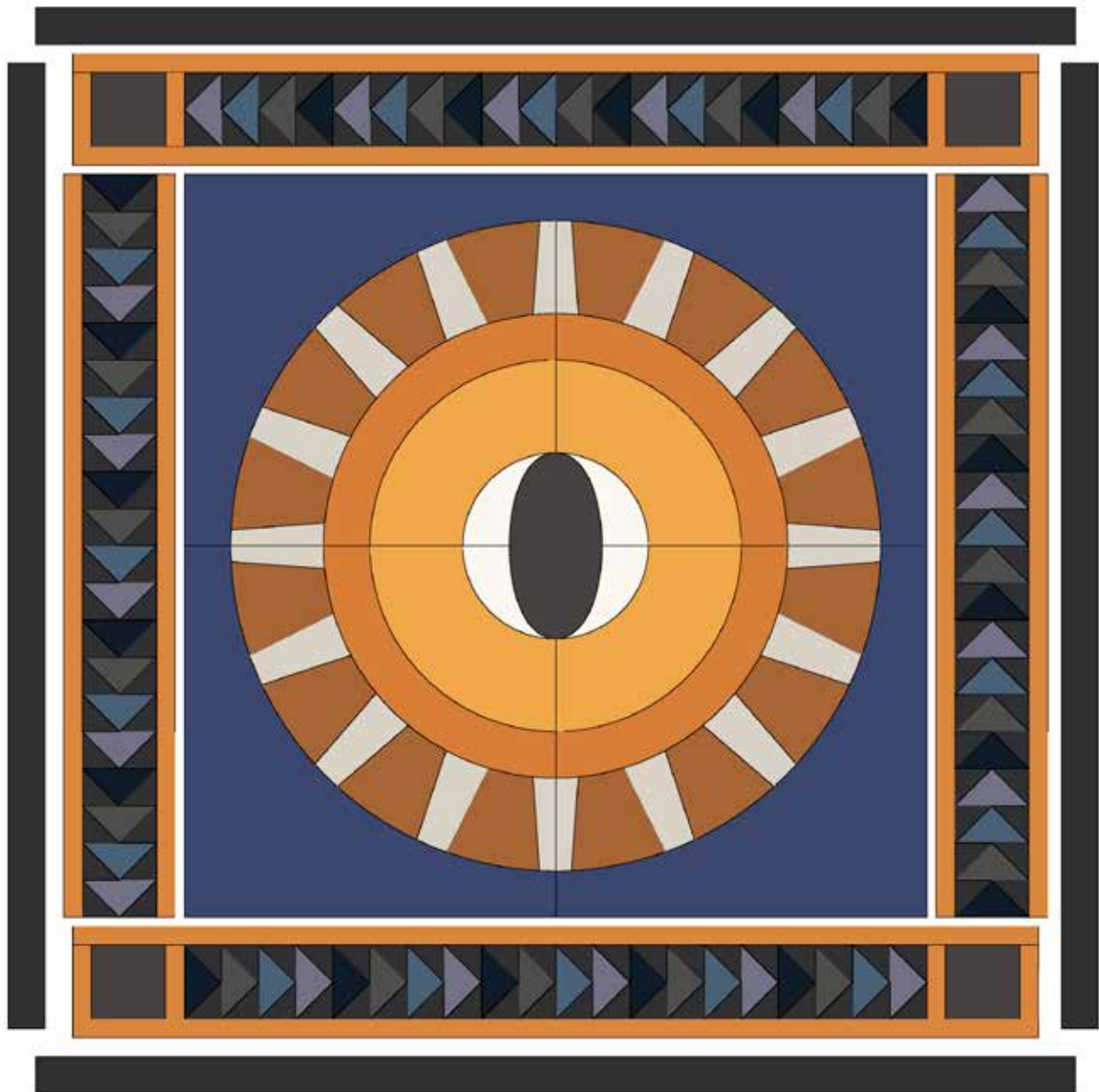


HORIZONTAL BORDER

- Sew the quarter blocks together into pairs, then together again to make the quilt center. Sew the Vertical Borders to the side of the quilt center, press, then sew the Horizontal Borders. Press. Sew the Fabric L $2\frac{1}{2}$ " x $52\frac{1}{2}$ " to the sides, press, then sew the $2\frac{1}{2}$ " x $56\frac{1}{2}$ " to the top and bottom. Press.
- Fold the Fabric A Template 8 piece in half, and half again, to mark the vertical and horizontal centres. Match the centers to the center seams of the quilt top. Using matching thread, applique Template 8 to the quilt top.

Finishing:

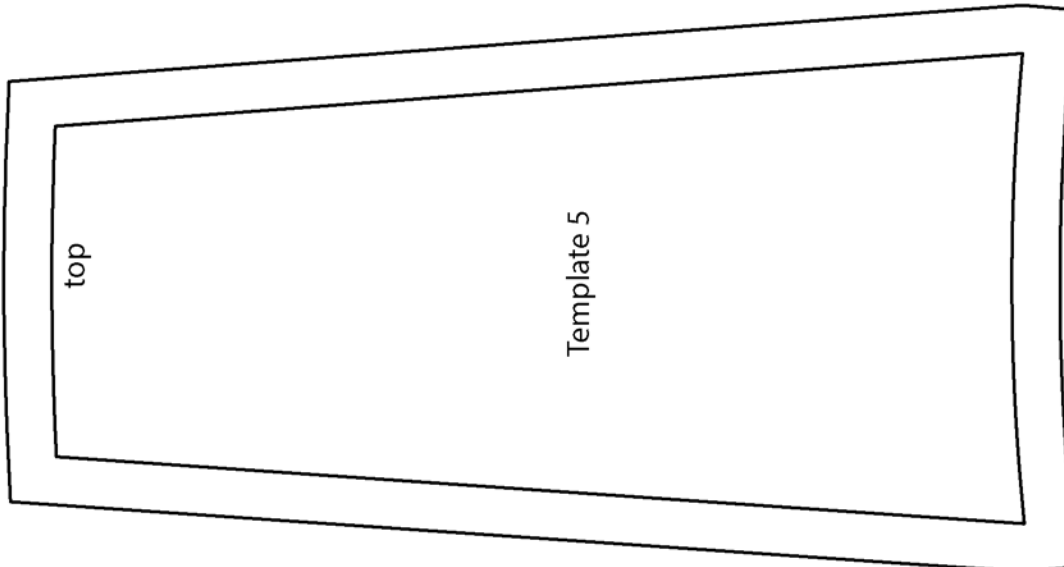
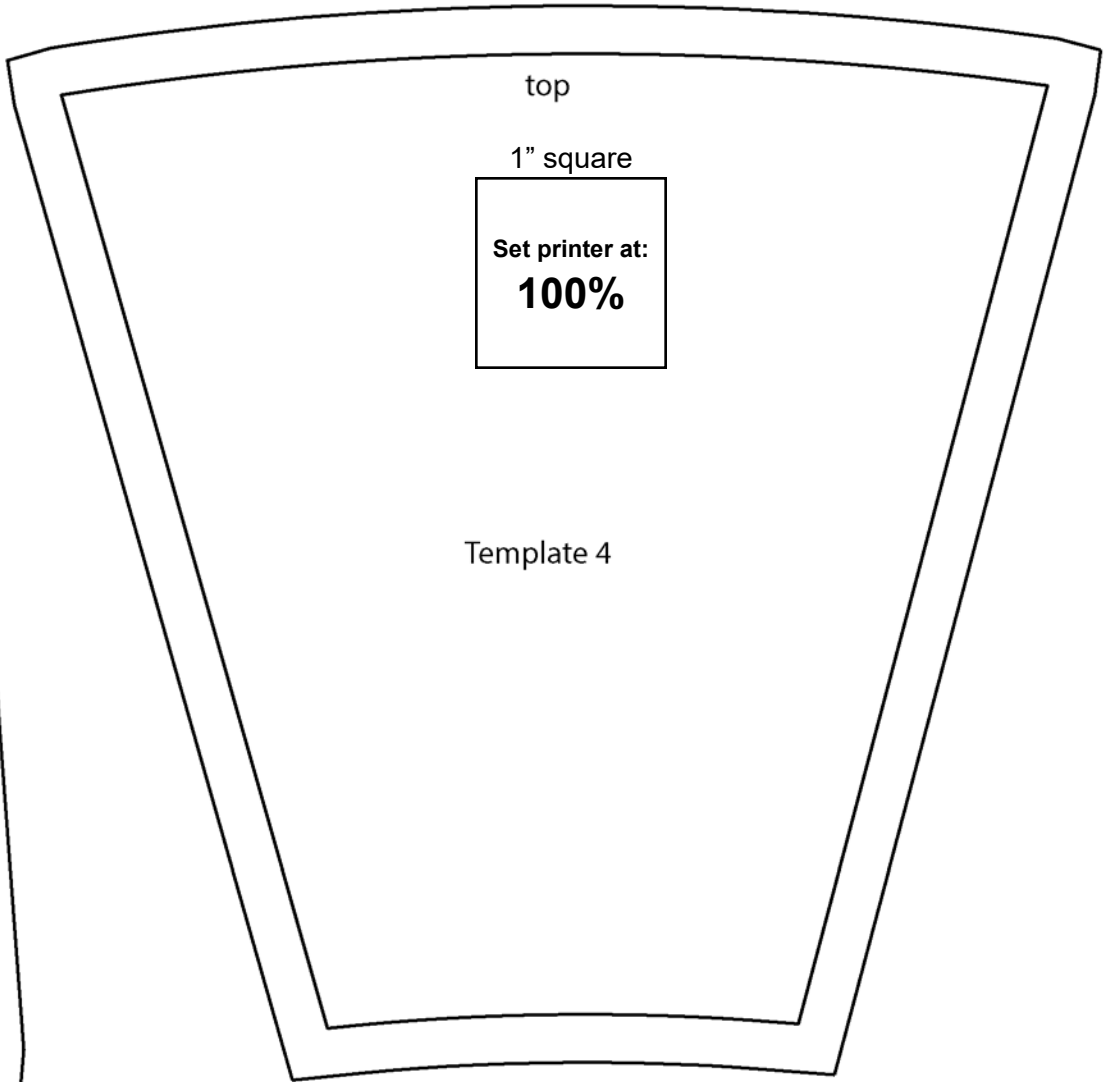
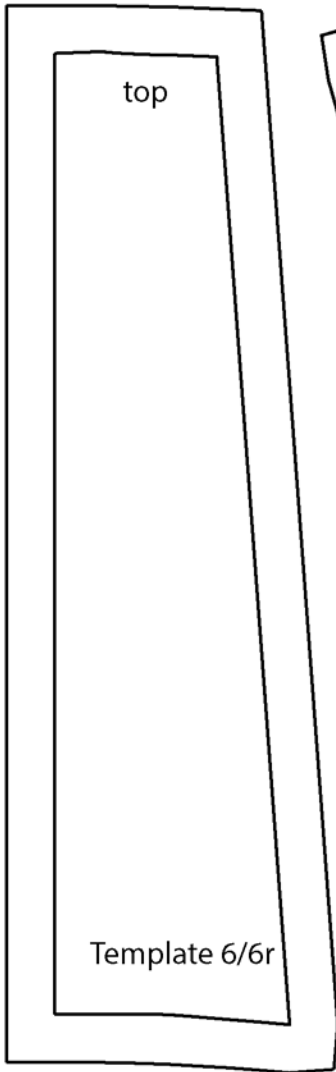
1. Prepare backing using two widths with a horizontal seam. Press seams open. Trim backing to 64" x 64".
2. Layer quilt, batting, and backing. Baste layers together.
3. Quilt as desired.
4. Trim layers even with quilt top, squaring corners.
5. Join Fabric I 2 1/4" binding strips with diagonal seams. Press seams open. Attach binding using your favorite method.
6. Make a label and sew to the back of the quilt.



Quilt Diagram

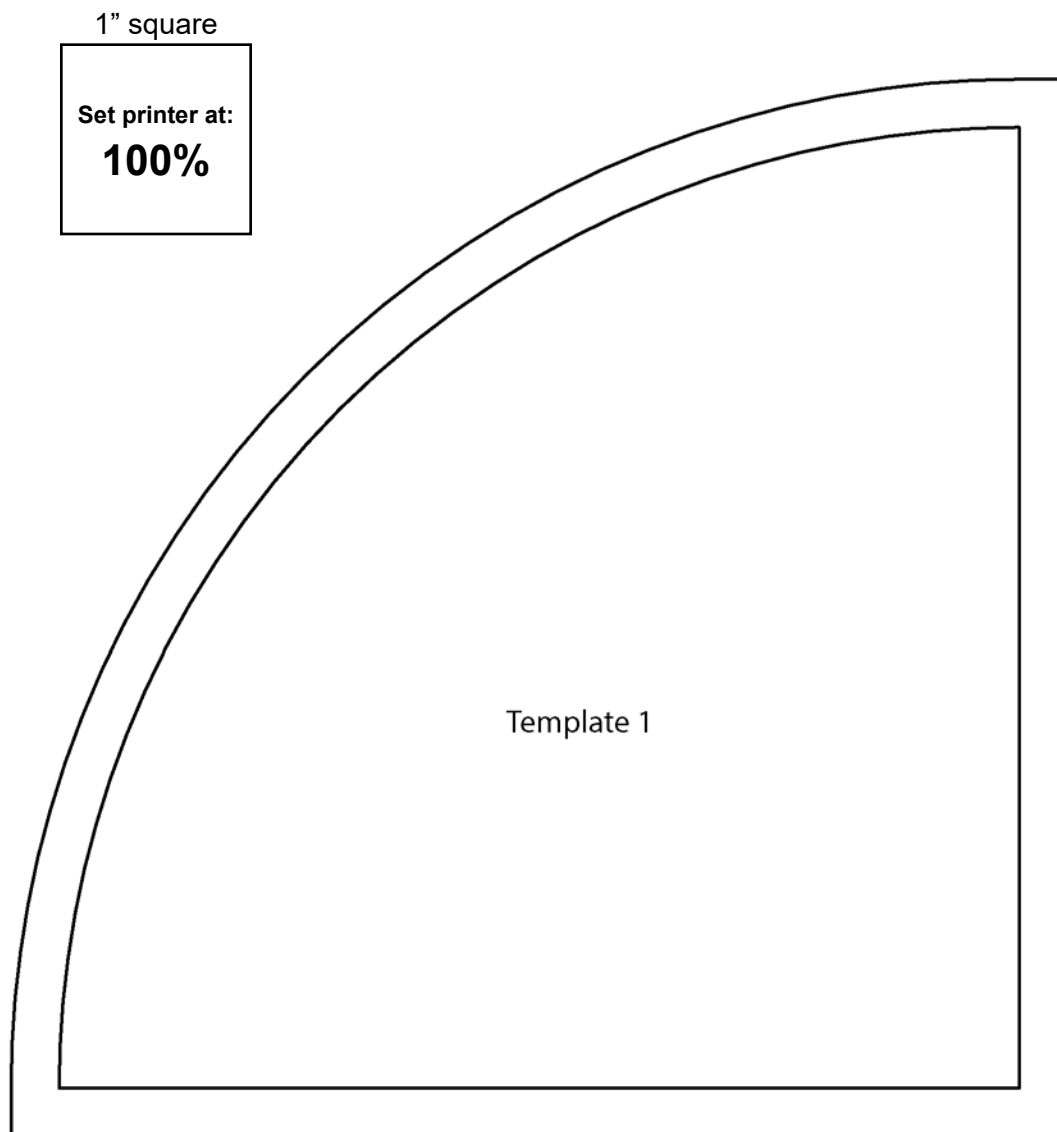
Templates:

- On each page, use the percentage square guide to adjust scale percentage in printers settings.
- If needed: After printing, use the blue grid lines to piece together the enlargements from the page.
- In some cases one template maybe on more than one page. With some type of back lighting, such as a light tablet or a window, you can perfectly match up the "Join Line" marking and then tape together.



Templates:

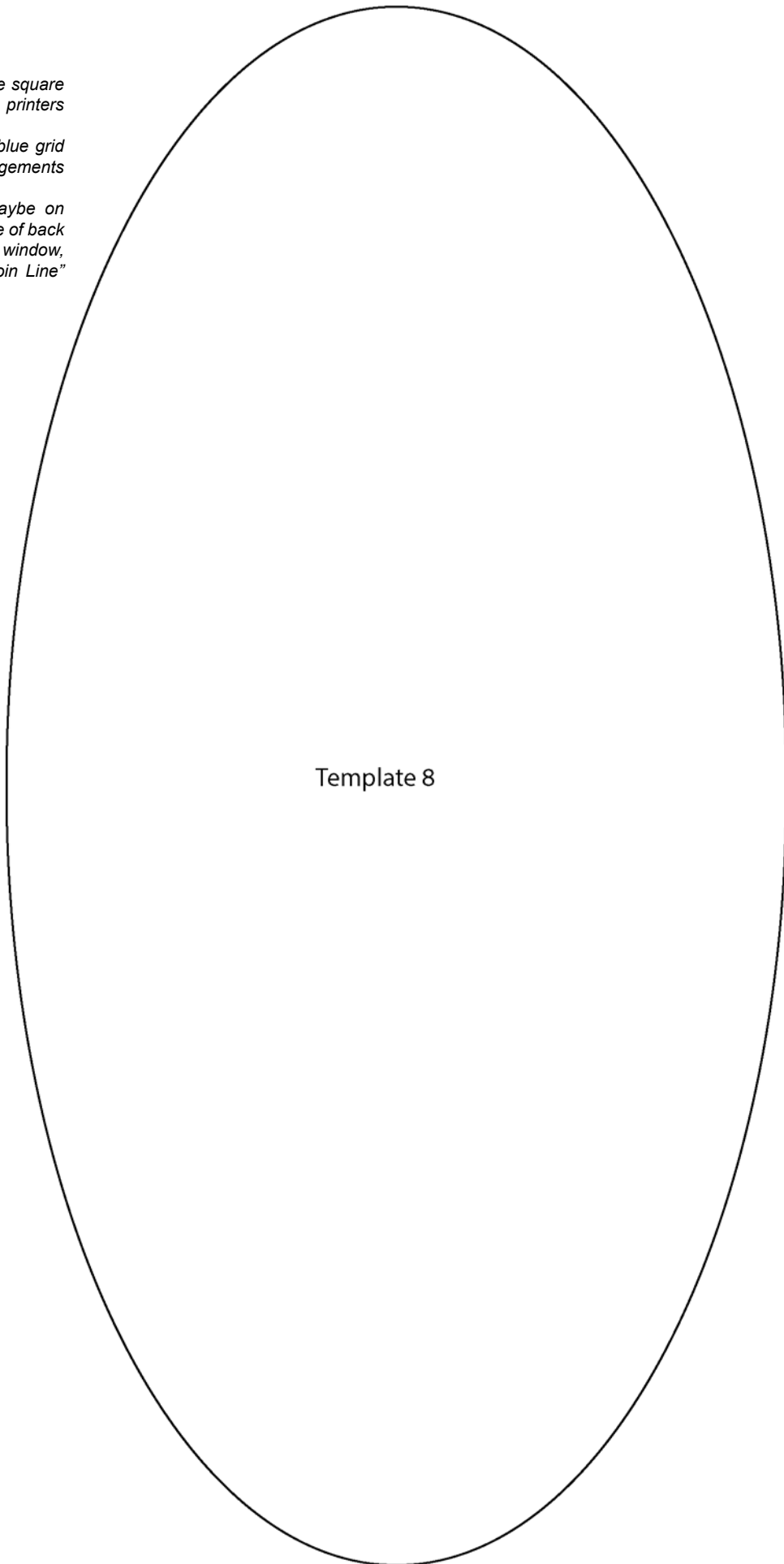
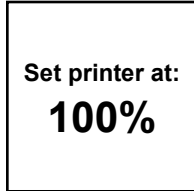
- On each page, use the percentage square guide to adjust scale percentage in printers settings.
- If needed: After printing, use the blue grid lines to piece together the enlargements from the page.
- In some cases one template maybe on more than one page. With some type of back lighting, such as a light tablet or a window, you can perfectly match up the "Join Line" marking and then tape together.



Templates:

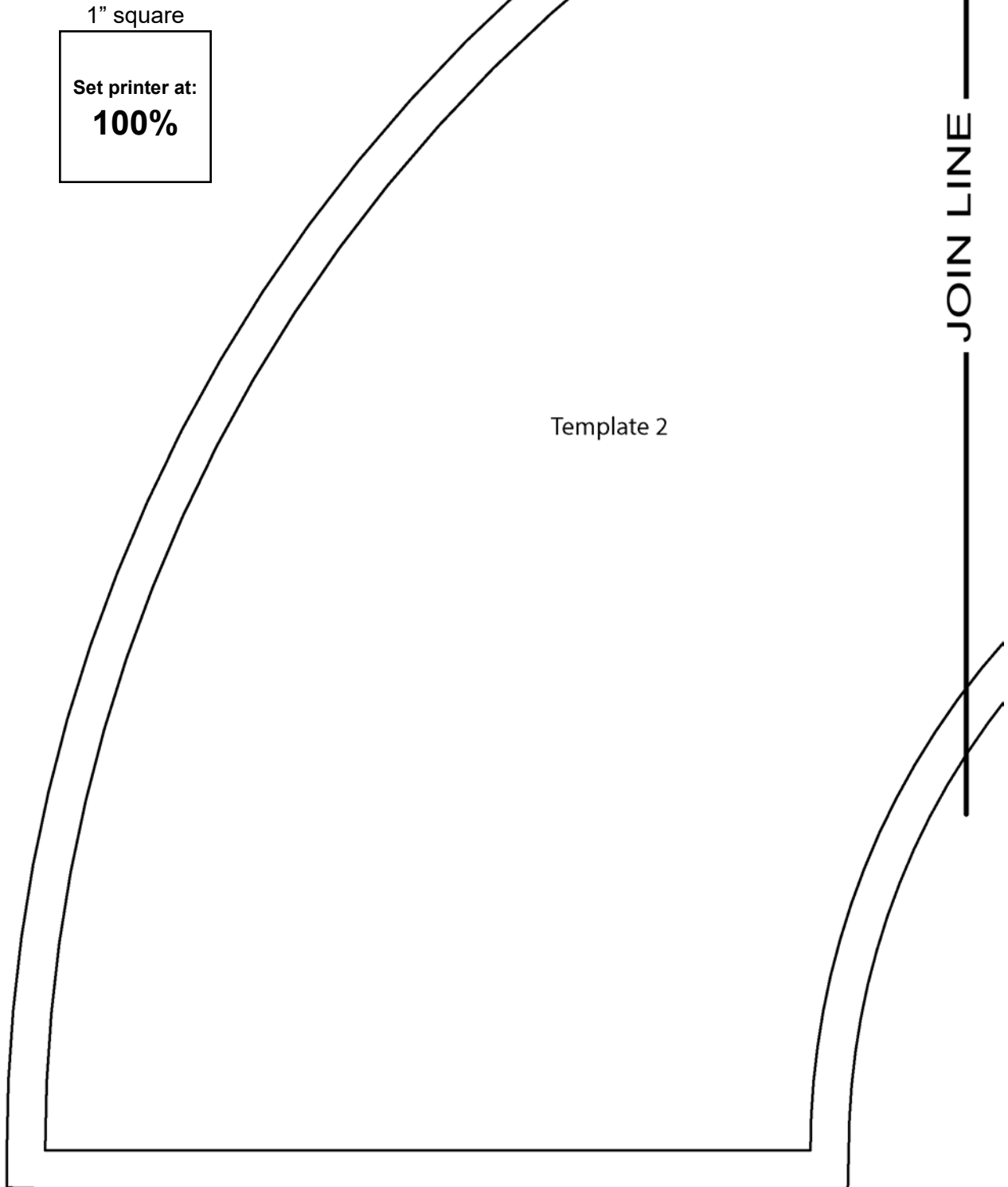
- On each page, use the percentage square guide to adjust scale percentage in printers settings.
- If needed: After printing, use the blue grid lines to piece together the enlargements from the page.
- In some cases one template maybe on more than one page. With some type of back lighting, such as a light tablet or a window, you can perfectly match up the "Join Line" marking and then tape together.

1" square



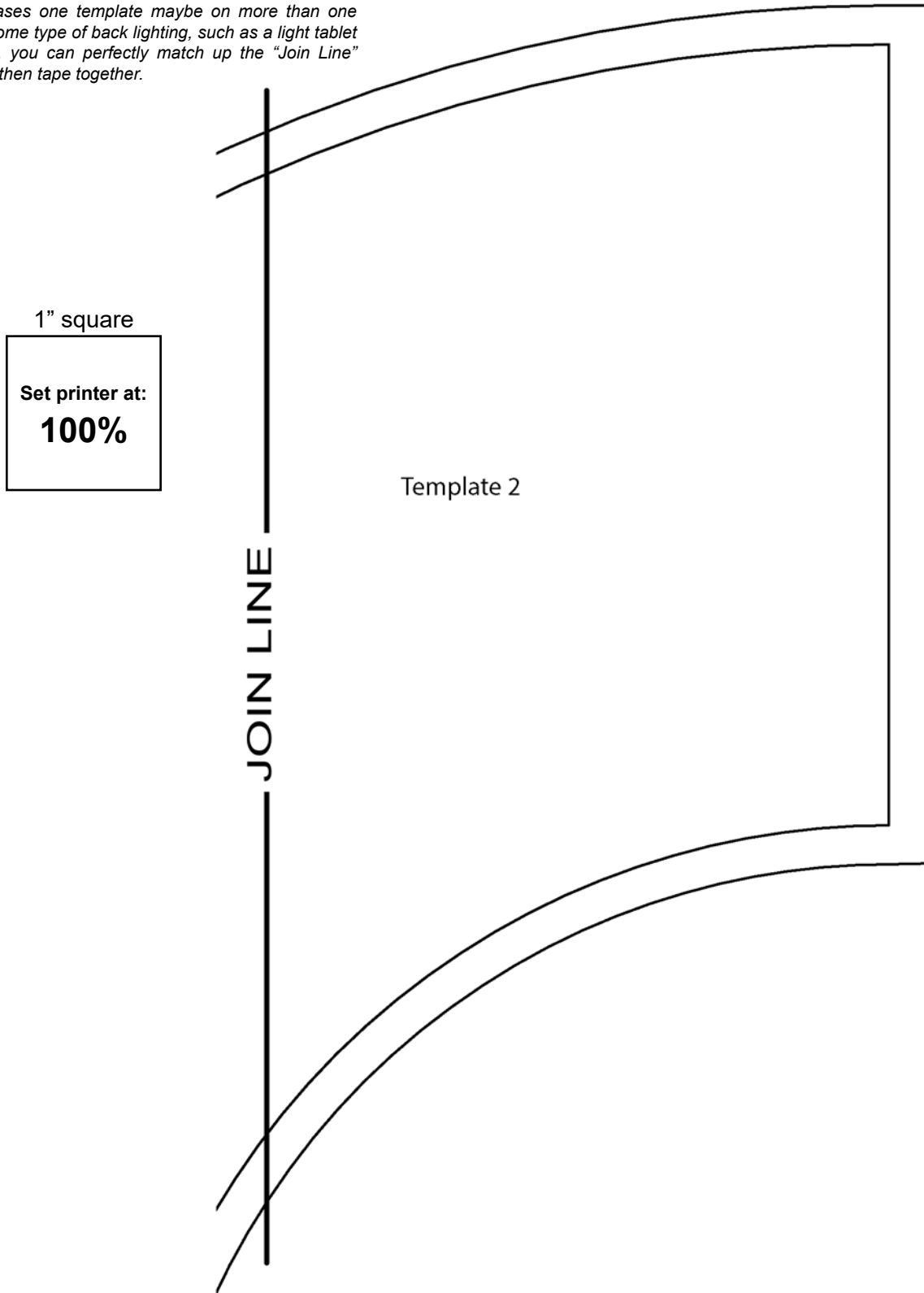
Templates:

- On each page, use the percentage square guide to adjust scale percentage in printers settings.
- If needed: After printing, use the blue grid lines to piece together the enlargements from the page.
- In some cases one template maybe on more than one page. With some type of back lighting, such as a light tablet or a window, you can perfectly match up the "Join Line" marking and then tape together.



Templates:

- On each page, use the percentage square guide to adjust scale percentage in printers settings.
- If needed: After printing, use the blue grid lines to piece together the enlargements from the page.
- In some cases one template maybe on more than one page. With some type of back lighting, such as a light tablet or a window, you can perfectly match up the "Join Line" marking and then tape together.

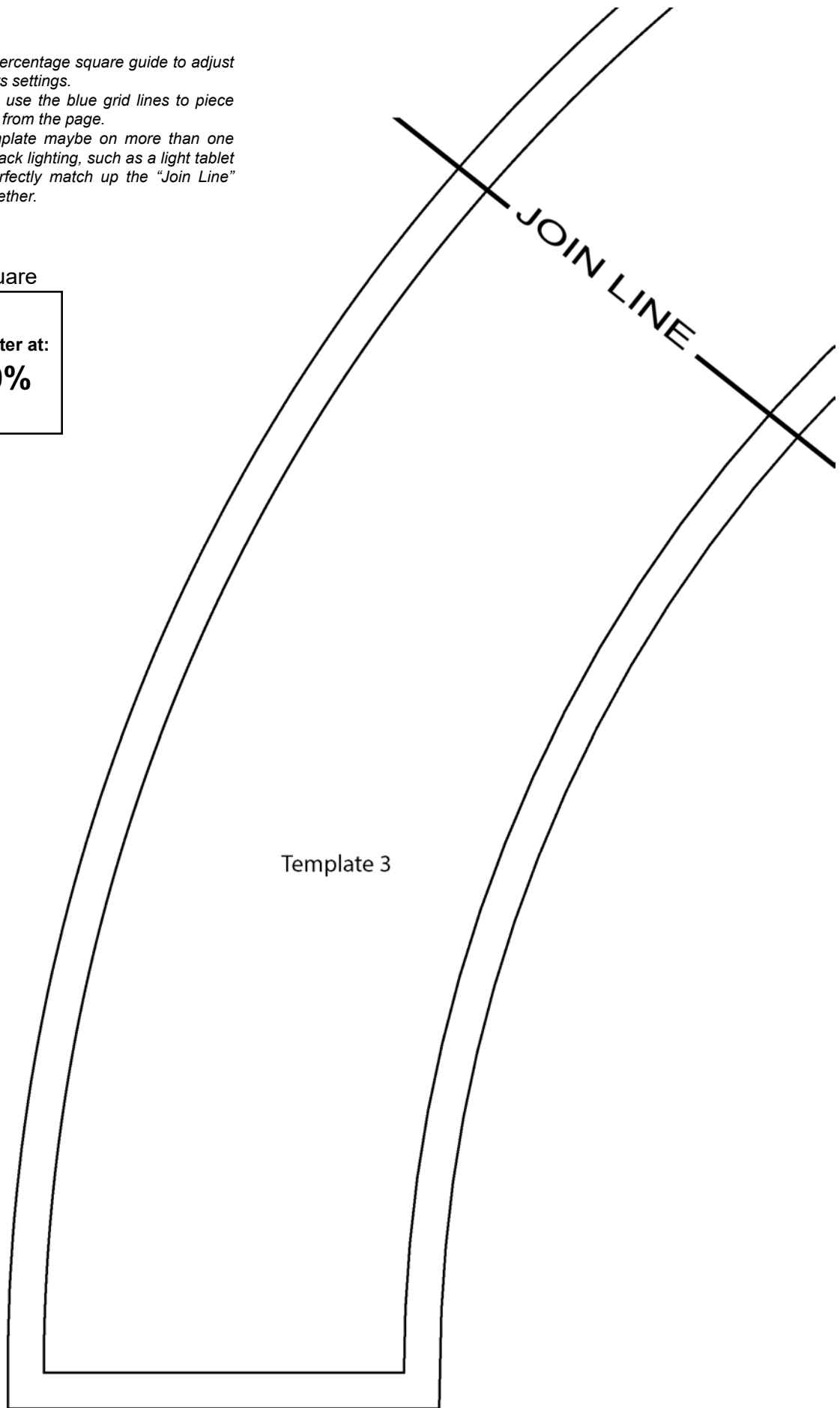


Templates:

- On each page, use the percentage square guide to adjust scale percentage in printers settings.
- If needed: After printing, use the blue grid lines to piece together the enlargements from the page.
- In some cases one template maybe on more than one page. With some type of back lighting, such as a light tablet or a window, you can perfectly match up the "Join Line" marking and then tape together.

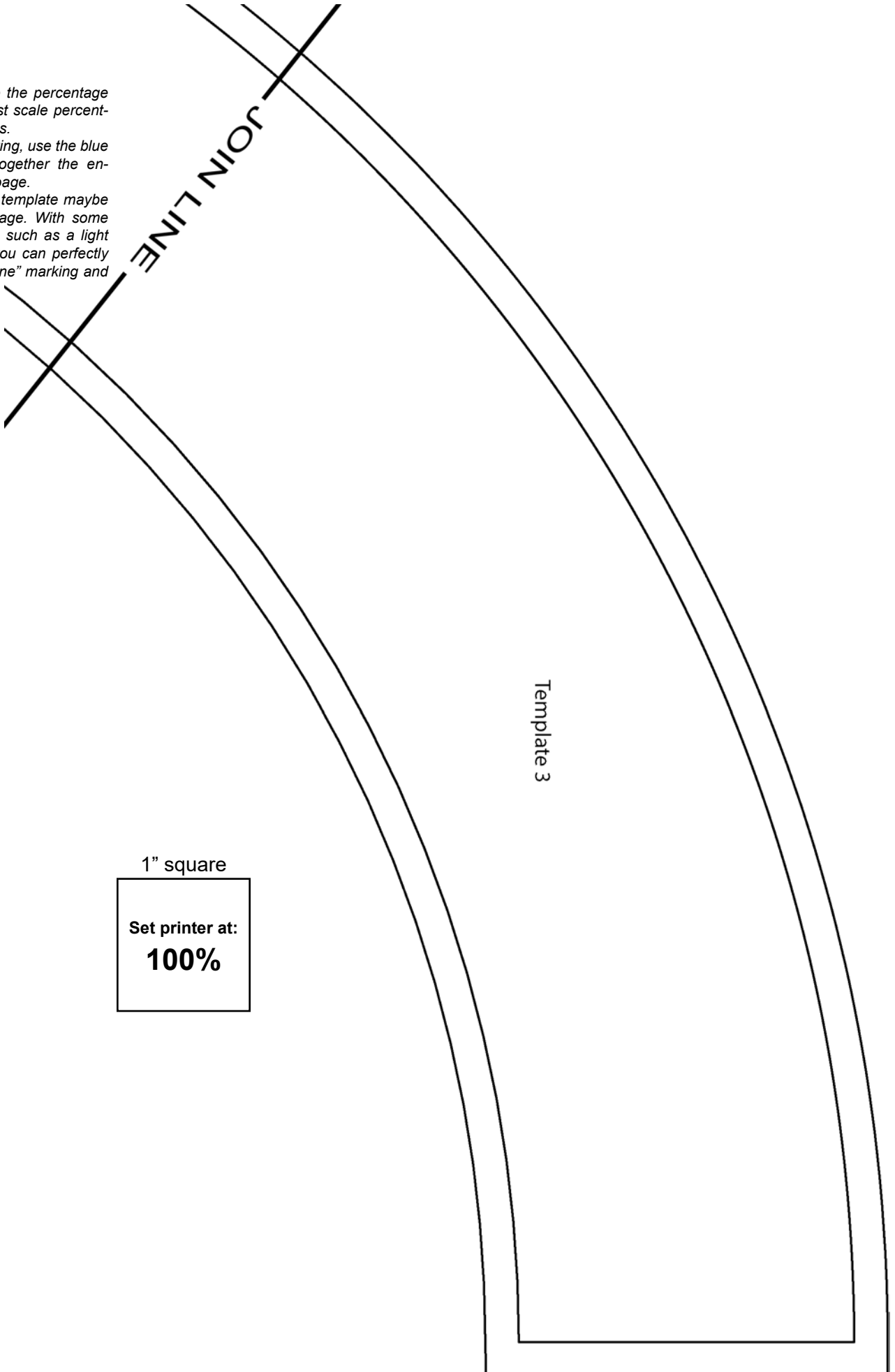
1" square

Set printer at:
100%



Templates:

- On each page, use the percentage square guide to adjust scale percentage in printers settings.
- If needed: After printing, use the blue grid lines to piece together the enlargements from the page.
- In some cases one template maybe on more than one page. With some type of back lighting, such as a light tablet or a window, you can perfectly match up the "Join Line" marking and then tape together.



1" square
Set printer at:
100%

Templates:

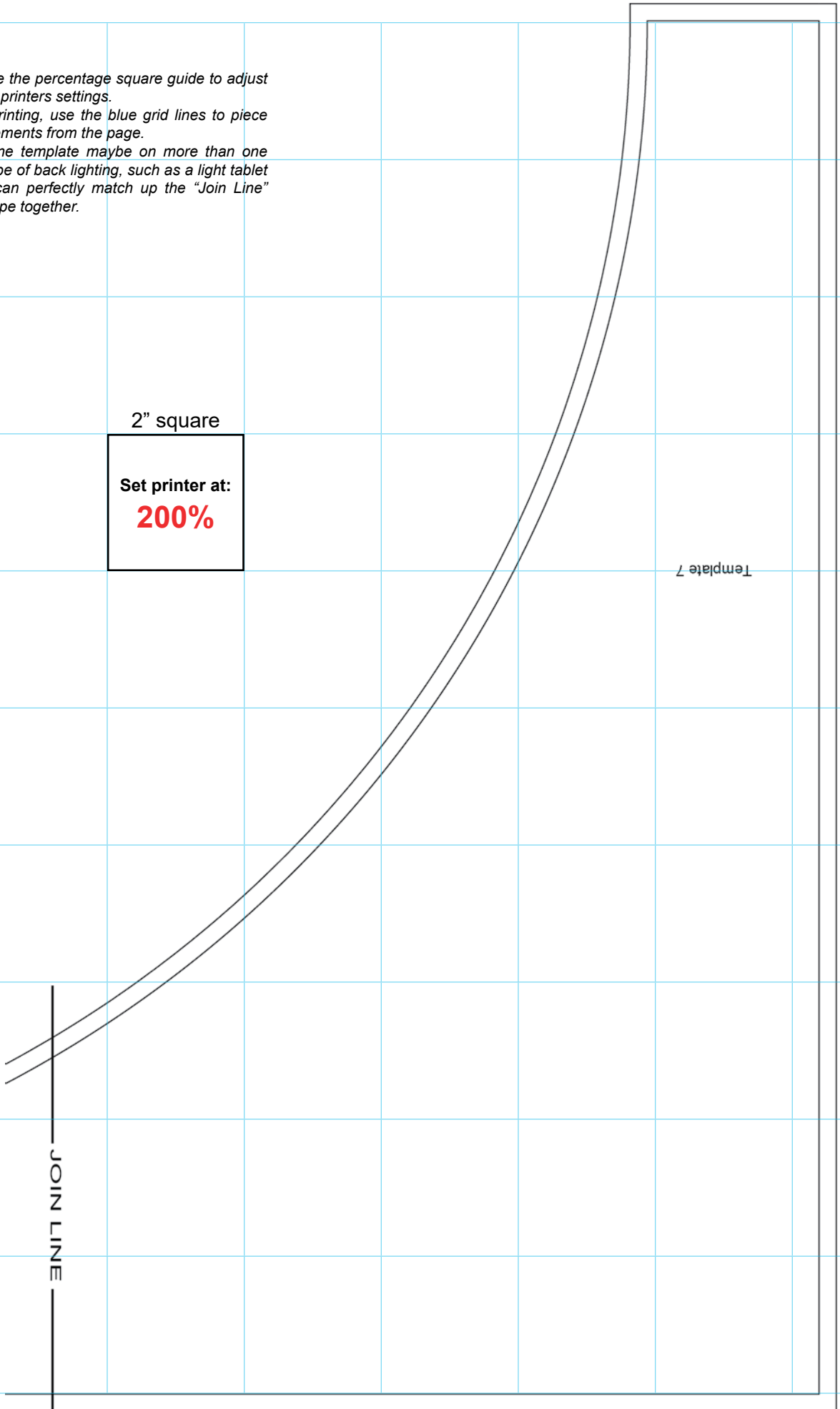
- On each page, use the percentage square guide to adjust scale percentage in printers settings.
- If needed: After printing, use the blue grid lines to piece together the enlargements from the page.
- In some cases one template maybe on more than one page. With some type of back lighting, such as a light tablet or a window, you can perfectly match up the "Join Line" marking and then tape together.

2" square

Set printer at:
200%

Template 7

JOIN LINE

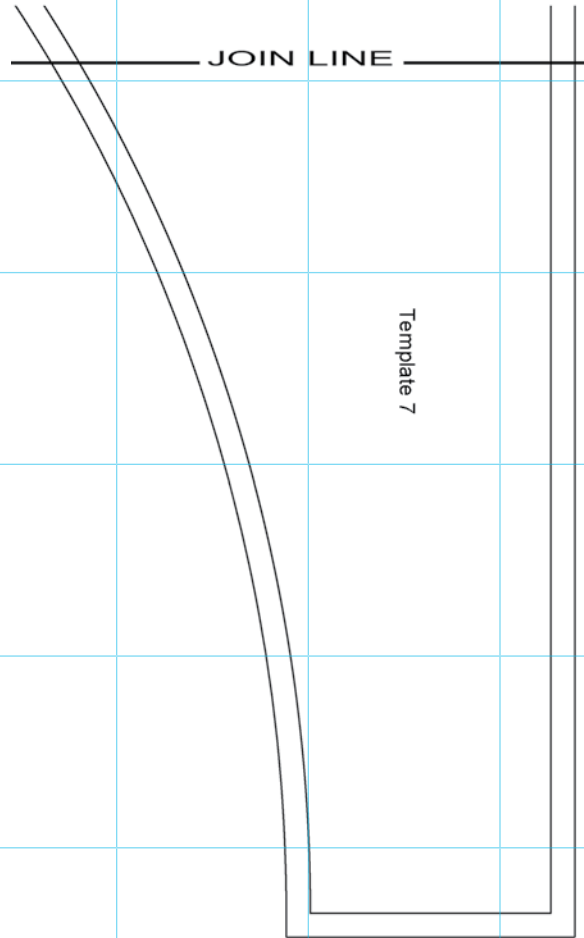


Templates:

- On each page, use the percentage square guide to adjust scale percentage in printers settings.
- If needed: After printing, use the blue grid lines to piece together the enlargements from the page.
- In some cases one template maybe on more than one page. With some type of back lighting, such as a light tablet or a window, you can perfectly match up the "Join Line" marking and then tape together.

2" square

Set printer at:
200%



Template 7

Practical Magic

Fabric Collection by
Jacqueline Wild



PMAG 5359 PA



PMAG 5361 V **Fabric B**



PMAG 5363 K **Fabric E**



PMAG 5360 K **Fabric A**



PMAG 5364 E **Fabric F**



PMAG 5364 K **Fabric G**



PMAG 5364 LO **Fabric H**



PMAG 5364 O[†] **Fabric I**



PMAG 5362 B **Fabric C**



PMAG 5362 O **Fabric D**



PMAG 5365 BV **Fabric J**



PMAG 5365 E **Fabric K**



PMAG 5365 K **Fabric L**



PMAG 5365 O **Fabric M**

Quilt Fabrics in Bold
† Suggested Backing

