

American Patch

Audrey's Treasure Quilt by Evonne Cook

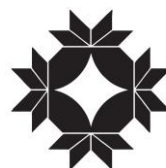


Shown using fabrics from the line, **American Patch**, by
The Rocky Mountain Quilt Museum for Washington Street Studio

Washington Street Studio



A DIVISION OF P&B TEXTILES



THE ROCKY MOUNTAIN
QUILT
MUSEUM

American Patch

Audrey's Treasure Quilt by Evonne Cook
featuring the American Patch collection by
The Rocky Mountain Quilt Museum
Quilt Size 43" x 51"

Yardage

This quilt shows nearly every print in the collection; however, every print can be used if you wish more variety in the blocks.

Fabric A APAT 264 N	5/8 yard
Fabric B APAT 264 B	7/8 yard
Fabric C APAT 264 P	5/8 yard
Each Remaining Fabric Print	1/8 yard
Backing	2¾ yards of any APAT fabric

General instructions: Read through all directions before beginning. Sew using a scant ¼" seam; seam allowances are built into the cutting directions. All pieces are sewn right sides together.

Cutting

Strips are cut across the width of fabric unless otherwise stated

From Fabric A (APAT 264 N), cut:

(5) 3½" x 42" strips for border; sides may have to be pieced

From Fabric B (APAT 264 B), cut:

(6) 4½" x 42" strips; sub cut into (49) 4½" squares for alternate blocks

From Fabric C (APAT 264 P), cut:

(1) 2½" x 42" strip for blocks
(1) 4½" x 42" strip; sub cut into (4) 4½" squares for border corners
(5) 2½" x 42" strips for binding

From each of the remaining light, medium, & dark fabric prints (EACH SKU), cut:

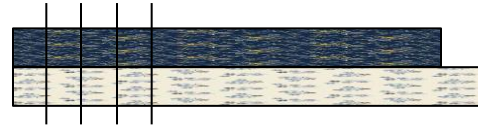
(1) 2½" x 42" strip

Sewing

1. To maximize the scrappiness of this quilt, you may want to cut some of the fabric strips being used for the 4-patch blocks in half, so strips will be 2½" x 21" instead of 2½" x 42" & you can enjoy more combinations.

2. Match your fabric strips into pairs of light & dark fabrics. You may use the medium fabrics as lights & darks depending on the other fabric you match them to. For instance, if you are using a very dark navy print, you can match it with a medium brown, but that same medium brown can match with a very light fabric to make a totally different block. Thus, you would be using the medium brown as a light in the first block, but as a dark in the second block.

3. Lay your matched pairs out & sew them together on the lengthwise. Press seams toward the dark. Crosscut them every 2½" for a total of 100 cuts.



4. Sew matched sets into (50) assorted 4-patch blocks.



5. Sew 4-patch blocks together with alternate blocks turning the blocks in different directions to make a pleasing arrangement. You will have 6 rows beginning & ending with a 4-patch block. And you will have 5 rows beginning & ending with an alternate block. See layout.

6. Continue to sew all the rows together. Press all the seams well.

Borders

7. Measure your quilt from top to bottom through the center. Cut (2) side borders at this measurement from Fabric A strips. You will have to piece these.

8. Measure your quilt from side to side & cut (2) top/bottom borders at this measurement from Fabric A strips.

9. Sew the side border strips to the quilt sides & press seams out.

10. Sew (2) 4½" squares of Fabric B to the ends of both top/bottom borders & sew them to the top & bottom of the quilt. Press seams out.

11. Quilt the quilt & bind with binding strips.

American Patch

Fabric Collection by



APAT 261 AU



APAT 261 N



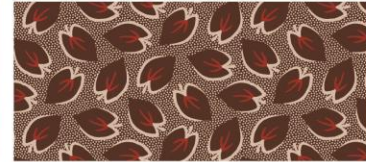
APAT 261 Z



APAT 262 LZ



APAT 262 P



APAT 262 Z



APAT 263 B



APAT 263 N



APAT 263 P



APAT 264 B



APAT 264 N



APAT 264 P



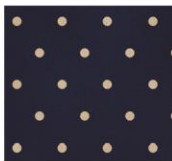
APAT 265 B



APAT 265 K



APAT 265 R



APAT 266 N



APAT 266 R



APAT 266 Z



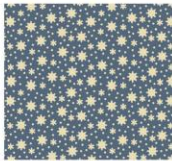
APAT 267 B



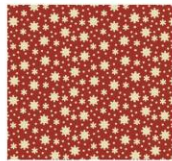
APAT 267 K



APAT 267 R



APAT 268 B



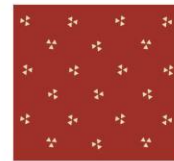
APAT 268 R



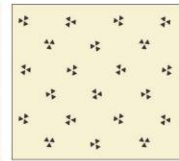
APAT 268 Z



APAT 269 N



APAT 269 R



APAT 269 W



Washington Street Studio, a division of P&B Textiles ♦ www.pbtex.com/wss ♦ 800-351-9087
45-47 Washington St., Pawtucket, RI 02860 ♦ 253 W. 35th St., 11th floor, New York, NY 10001

▲ 100% cotton ♦ Cold wash & dry ♦ 43" / 44" ♦ Colors may vary due to printing process
All images shown at 50% scale.