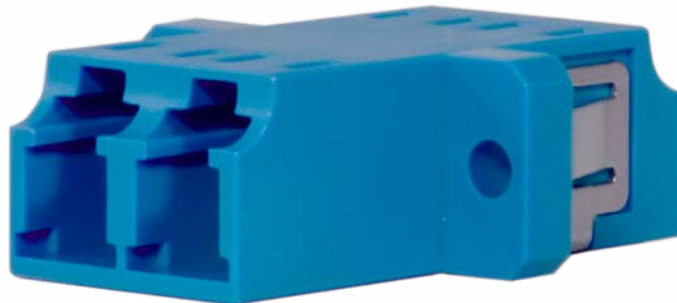


## Technical Specifications

# S2D-ADPT-LCLC

*Duplex Single Mode OS2 LC to LC Coupler*



The S2D-ADPT-LCLC, a fiber optic adapter sometimes also called a coupler, is a small device designed to terminate or link the fiber optic cables or fiber optic connectors between two fiber optic lines.

### Physical Characteristics

Connector Types End A	LC
Connector Types End B	LC
Polish Type	UPC

### Environmental Characteristics

Operating Temperature	-20~70°C (-4~158°F)
Storage Temperature	-45~85°C (-49~185°F)

### Mechanical/Optical Characteristics

Fiber Count	Duplex
Fiber Mode	Single Mode OS2
Material Color	Blue
Flammability Rate	UL94-V0
Connector Insertion Loss	≤0.2dB