



-- BBGS-18 --  
(GRAND SLAM BATTING CAGE)  
Installation Instructions



Call Jaypro Sports Equipment at 1-800-243-0533  
during regular business hours for technical support.

[www.jaypro.com](http://www.jaypro.com)

**JAYPRO SPORTS**  
BBGS-18 GRAND SLAM BATTING CAGE

**IMPORTANT NOTICE:**

- 1) BEFORE EACH USE CHECK EQUIPMENT FOR PROPER CONNECTING HARDWARE AND STRUCTURAL INTEGRITY. REPLACE DAMAGED OR MISSING HARDWARE IMMEDIATELY.
- 2) USE OF THIS EQUIPMENT OTHER THAN INTENDED, MAY BE HAZARDOUS.
- 3) ALTERATION OR MODIFICATION OF THIS EQUIPMENT MAY BE HAZARDOUS AND RESULT IN INJURY. FOR REPAIR OR REPLACEMENT, CONTACT YOUR DEALER OR JAYPRO SPORTS.

**Precautions:**

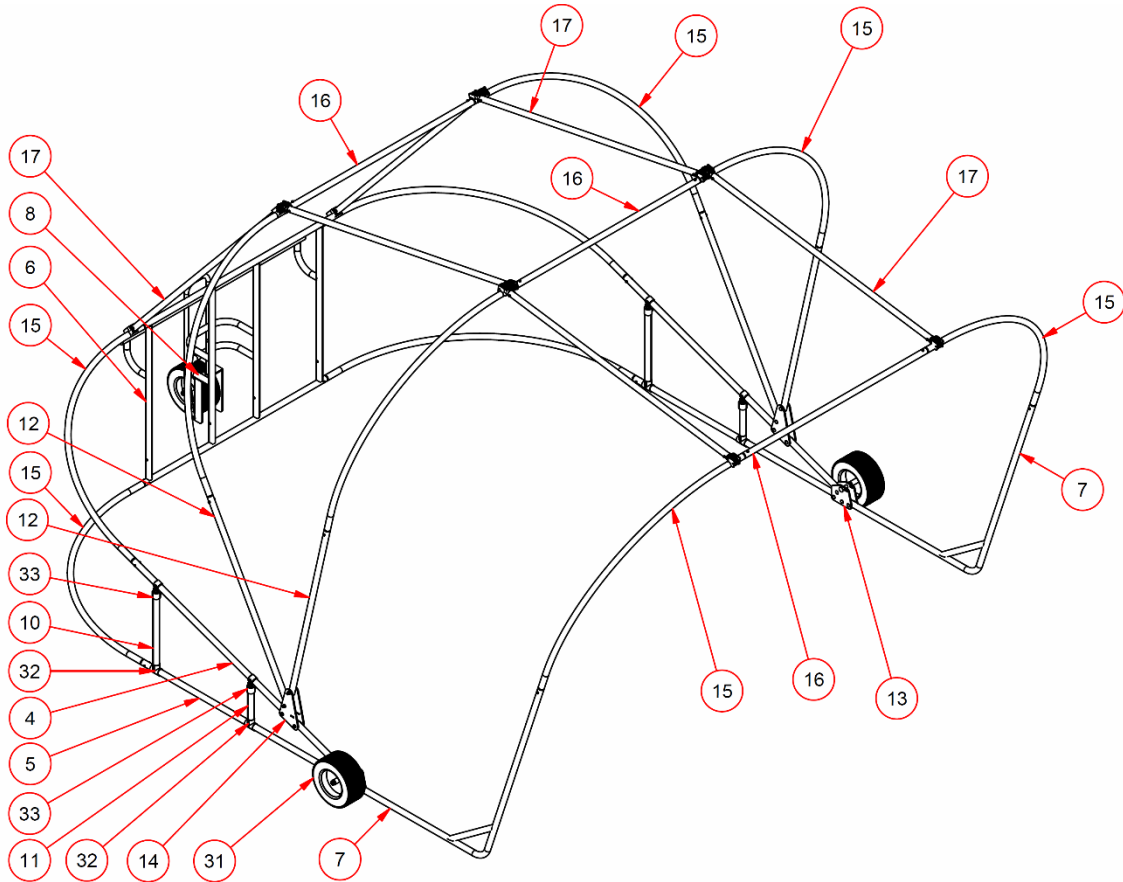
- FOLLOW ALL INSTRUCTIONS CLOSELY. DON'T SKIP ANY STEPS, OR OMIT ANY HARDWARE.
- SELECT A CLEAR, FLAT AREA FOR ASSEMBLY.
- ALWAYS BE CAREFUL WHEN USING POWER TOOLS – FOLLOW TOOL MANUFACTURER'S INSTRUCTIONS AND SAFETY PRECAUTIONS.
- ALWAYS WEAR APPROPRIATE PROTECTIVE GEAR (GOGGLES, GLOVES, STEEL-TOED SAFETY SHOES, ETC.).

**LIST OF RECOMMENDED TOOLS & SUPPLIES:**

1. POWER DRILL WITH 1/8" DIAMETER DRILL BIT(S)
2. BOX WRENCHES, ADJUSTABLE WRENCHES, OR SOCKET SET
3. RUBBER Mallet AND/OR BLOCK OF WOOD
4. LEVEL
5. PHILLIPS SCREWDRIVER (OR PHILLIPS BITS FOR DRILL)
6. RAGS, GREEN SCRUBBING PADS, CLEANING SOLUTION
7. ASSEMBLE ALL TOOLS REQUIRED (PER ABOVE LIST)
8. UNPACK ALL ITEMS, MAKE SURE EVERYTHING IS RECEIVED (PER ABOVE LIST). PICK A FLAT AREA FOR ASSEMBLY – YOU WILL NEED AT LEAST 18'X18' FOR FINAL ASSEMBLY, WITH AN ADDITIONAL AREA EQUIVALENT IN SIZE FOR TEMPORARY ASSEMBLY OF CAGE SECTIONS.

# BBGS-18 QUICK REFERENCE

( SEE EXPLODED VIEWS OF DIFFERENT SECTIONS FOR HARDWARE CALLOUTS )



ITEM	QTY	DESCRIPTION	ITEM	QTY	DESCRIPTION
1	2	1" OD x 3/4" ID x 1" LONG SLEEVE	23	20	5/16-18 x 2-1/4 HEX CAP SCREW-ZP-GrNC
2	2	1" OD x 3/4" ID x 2" LONG SLEEVE	24	18	1/2-13 UNC-Thin Nylon Lock Nut-ZP-GrNC
3	1	1" OD x 3/4" ID x 1-5/16" LONG SLEEVE	25	3	3/4"-10 STOVER LOCKNUT ZINC PLATE
4	2	HORIZONTAL FRAME PIPE x 98-3/4" LONG	26	1	3/4-10 x 9" HEX CAP SCREW-ZP-Gr5
5	2	HORIZONTAL FRAME PIPE x 91" LONG	27	52	1/2" WASHER, ZP
6	1	BGLC-7500 REAR FRAME WELDMENT	28	13	3/4 SAE WASHER-ZP-GrNC
7	2	BBGS-22 FRONT ANGLED SECTION	29	1	2-1/2" WASHER SHIM
8	1	REAR WHEEL ASSEMBLY	30	1	1 1/2" END CAP
9	1	LIFTING HANLDE WELDMENT	31	3	6/650 x 8 PNEUMATIC WHEEL
10	2	BBGS SECTION HORIZ x 27" LONG	32	4	1.90" TEE HUB
11	2	BBGS SECTION HORIZ x 12" LONG	33	4	ADJUSTABLE TEE
12	4	FRAME SIDE HINGE PIPE x 70" LONG	34	1	PRO BATTING CAGE SKIRT
13	4	GRAND SLAM WHEEL PLATE	35	1	500 FT OF BLACK LINE (ROPE)
14	4	BIG GRAND SLAM LEAGUE PLATE	36	3	2" x 60 YD BLACK GAFFERS TAPE
15	10	CURVED FRAME PIPE, SWAGED 2X	37	1	REAR WHEEL RECEIVER
16	3	UPPER FRAME HORIZONTAL PIPE x 78" LONG	38	1	REAR WHEEL JACK BRACKET
17	6	STRUT ASSY LITTLE SLAM	39	3	3/8-16 x 1 HEX CAP SCREW-ZP-GrNC
18	2	PLASTIC END PLUG 77-8	40	7	3/8 SAE WASHER-ZP-GrNC
19	2	3/4"-10 x 10" CARRIAGE BOLT, ZP	41	7	3/8-16 UNC-Nylon Lock Nut-ZP-GrNC
20	16	1/2"-13 x 3-1/2" CARRIAGE BOLT, ZP	42	4	3/8-16 x 2 1/2 CARRIAGE BOLT GRD 5
21	2	1/2"-13 x 1-1/2" CARRIAGE BOLT, ZP	43	4	9/16 - 12 FLANGE LOCK NUT - ZP - GrNC
22	20	5/16-18 UNC-Nylon Lock Nut-ZP-GrNC	44	4	9/16-12 x 2-1/2 HEX CAP SCREW-ZP-GrNC

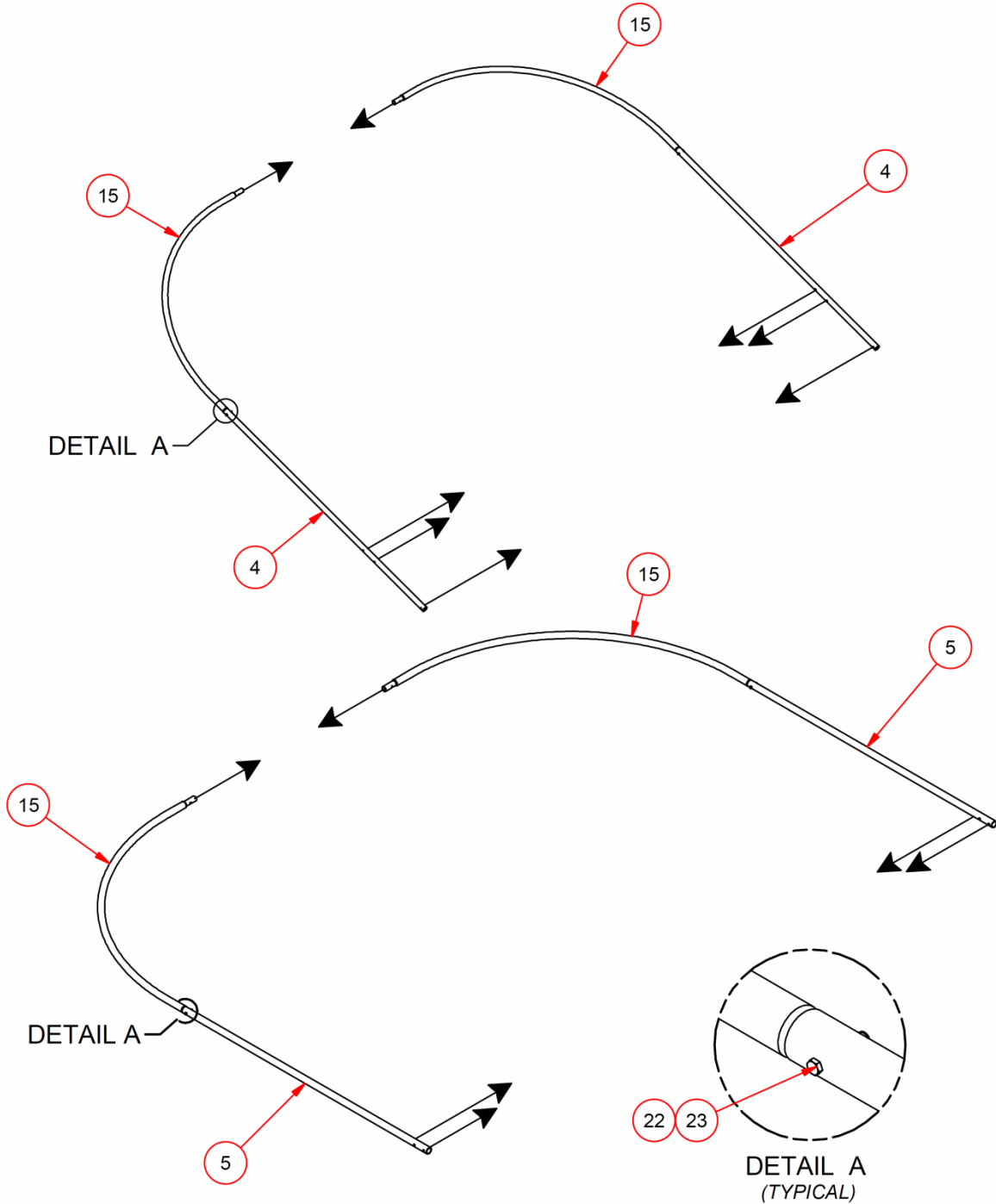
*Note: It is critical the area you select be as flat as possible, as there are steps during assembly that call for alignment of holes using a level.*

*Note: Assembly requires two people.*

## Assemble Framework:

1. Connect curved pipe (15) to pipe 98-3/4" long (4) w/ lock nut & hex bolt & connect curved pipe (15) to pipe 91" long (5) w/ lock nut & hex bolt.

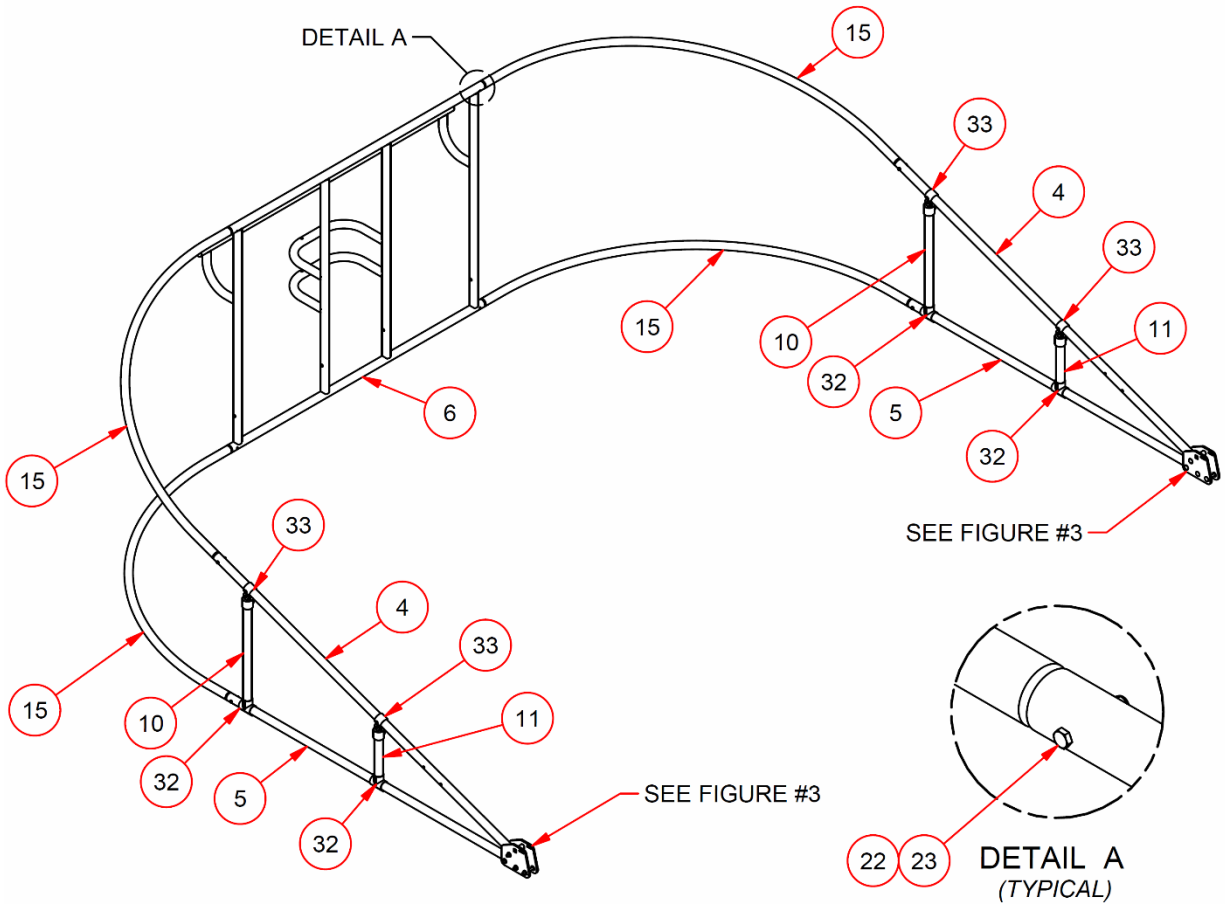
ITEM	QTY	DESCRIPTION
4	2	HORIZONTAL FRAME PIPE x 98-3/4" LONG
5	2	HORIZONTAL FRAME PIPE x 91" LONG
15	10	CURVED FRAME PIPE, SWAGED 2X
22	20	5/16-18 UNC-Nylon Lock Nut-ZP-GrNC
23	20	5/16-18 x 2-1/4 HEX CAP SCREW-ZP-GrNC



[BBS-18] FIGURE #1

2. Connect curved pipe (15) to rear welded section (6) w/ lock nut & hex bolt. *Note: Slide on collar (32) to pipe (5) & collar (33) to pipe (4).*

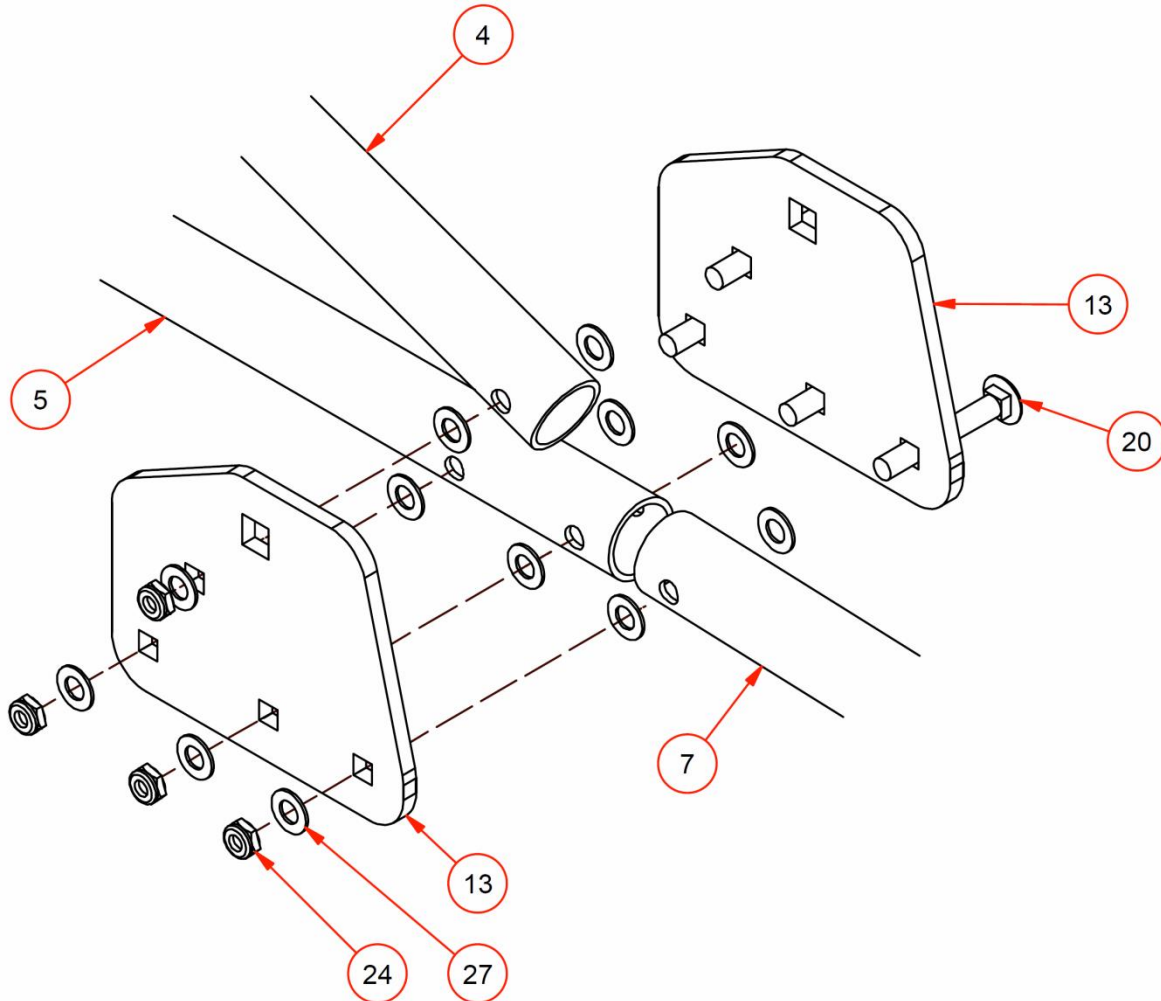
ITEM	QTY	DESCRIPTION
4	2	HORIZONTAL FRAME PIPE x 98-3/4" LONG
5	2	HORIZONTAL FRAME PIPE x 91" LONG
6	1	BGLC-7500 REAR FRAME WELDMENT
10	2	GRAND SLAM SIDE PIPE x 27" LONG
11	2	GRAND SLAM SIDE PIPE x 12" LONG
15	10	CURVED FRAME PIPE, SWAGED 2X
22	20	5/16-18 UNC-Nylon Lock Nut-ZP-GrNC
23	20	5/16-18 x 2-1/4 HEX CAP SCREW-ZP-GrNC
32	4	1.90" TEE HUB
33	4	ADJUSTABLE TEE



[BBGS-18] FIGURE #2

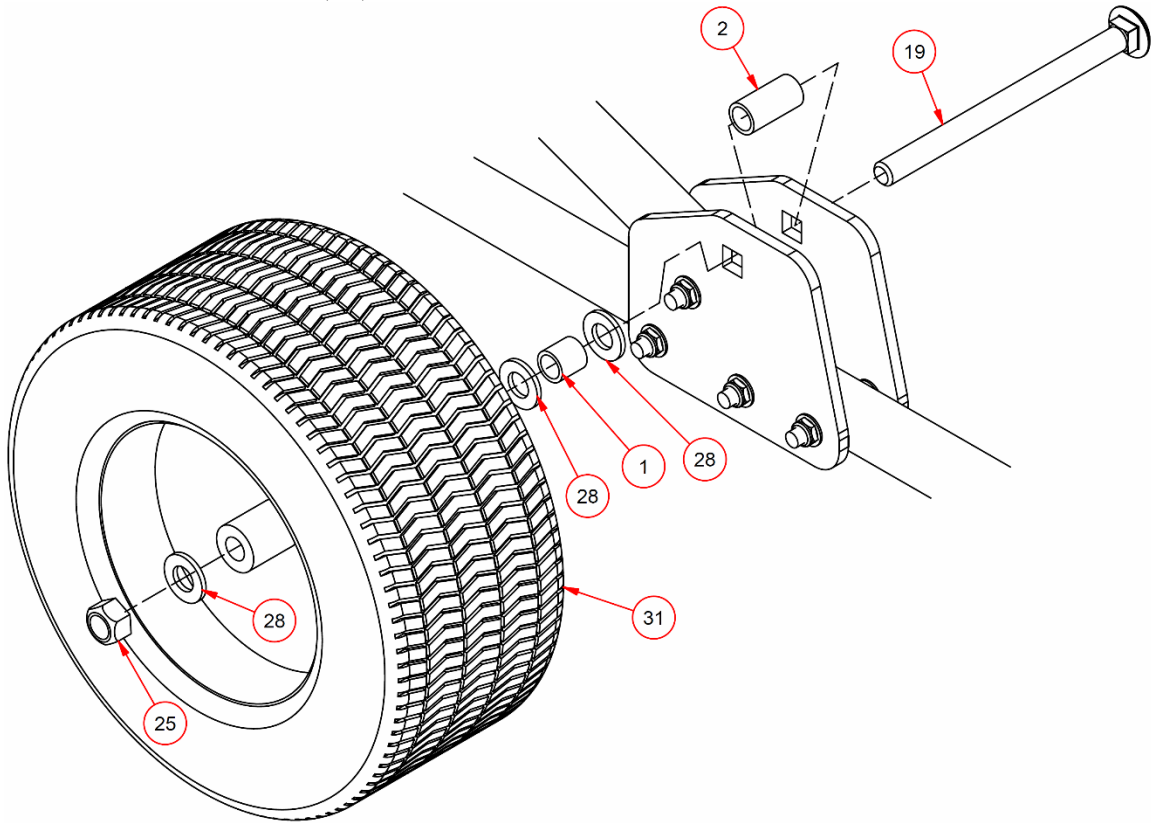
3. Assemble pipes (4), (5), (7) & plate (13) w/ 1/2" hardware as shown.  
*Note: DO NOT OVER TIGHTEN.*

ITEM	QTY	DESCRIPTION
1	2	1" OD x 3/4" ID x 1" LONG SLEEVE
2	2	1" OD x 3/4" ID x 2" LONG SLEEVE
4	2	HORIZONTAL FRAME PIPE x 98-3/4" LONG
5	2	HORIZONTAL FRAME PIPE x 91" LONG
7	2	BBGS-22 FRONT ANGLED SECTION
13	4	GRAND SLAM WHEEL PLATE
19	2	3/4"-10 x 10" CARRIAGE BOLT, ZP
20	16	1/2"-13 x 3-1/2" CARRIAGE BOLT, ZP
24	18	1/2"-13 THIN NYLON LOCK NUT, ZP
25	3	3/4"-10 STOVER LOCKNUT ZINC PLATE
27	52	1/2" WASHER, ZP
28	13	3/4" SAE FLAT WASHER, ZP
31	3	6/650 x 8 PNEUMATIC WHEEL



[BBGS-18] FIGURE #3

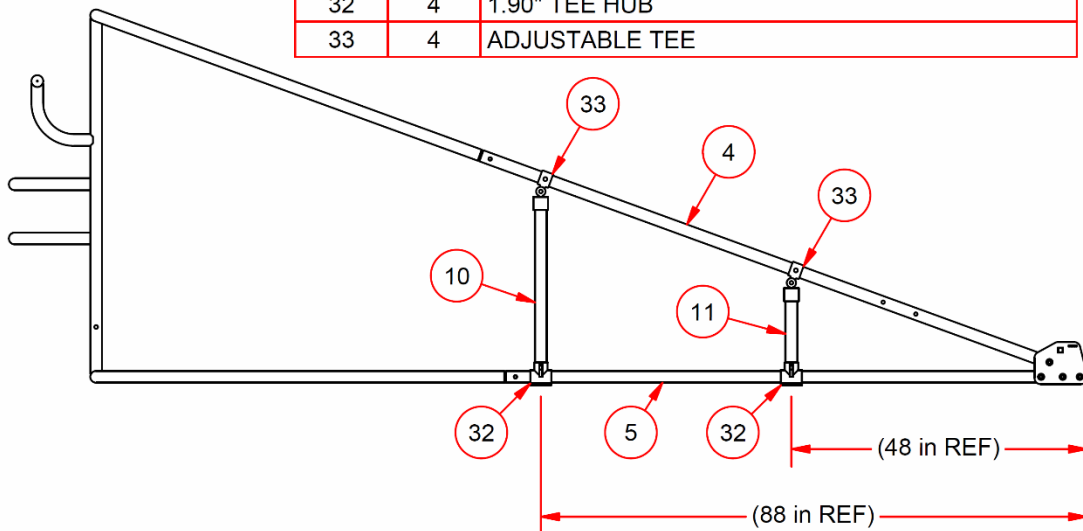
4. Assemble wheel (31) w/ hardware as shown.



[BBGS-18] FIGURE #4

5. Assemble pipes (10) & (11) to collars (32) & (33), tighten all set screws w/ Allen wrench provided.

ITEM	QTY	DESCRIPTION
4	2	HORIZONTAL FRAME PIPE x 98-3/4" LONG
5	2	HORIZONTAL FRAME PIPE x 91" LONG
10	2	GRAND SLAM SIDE PIPE x 27" LONG
11	2	GRAND SLAM SIDE PIPE x 12" LONG
32	4	1.90" TEE HUB
33	4	ADJUSTABLE TEE



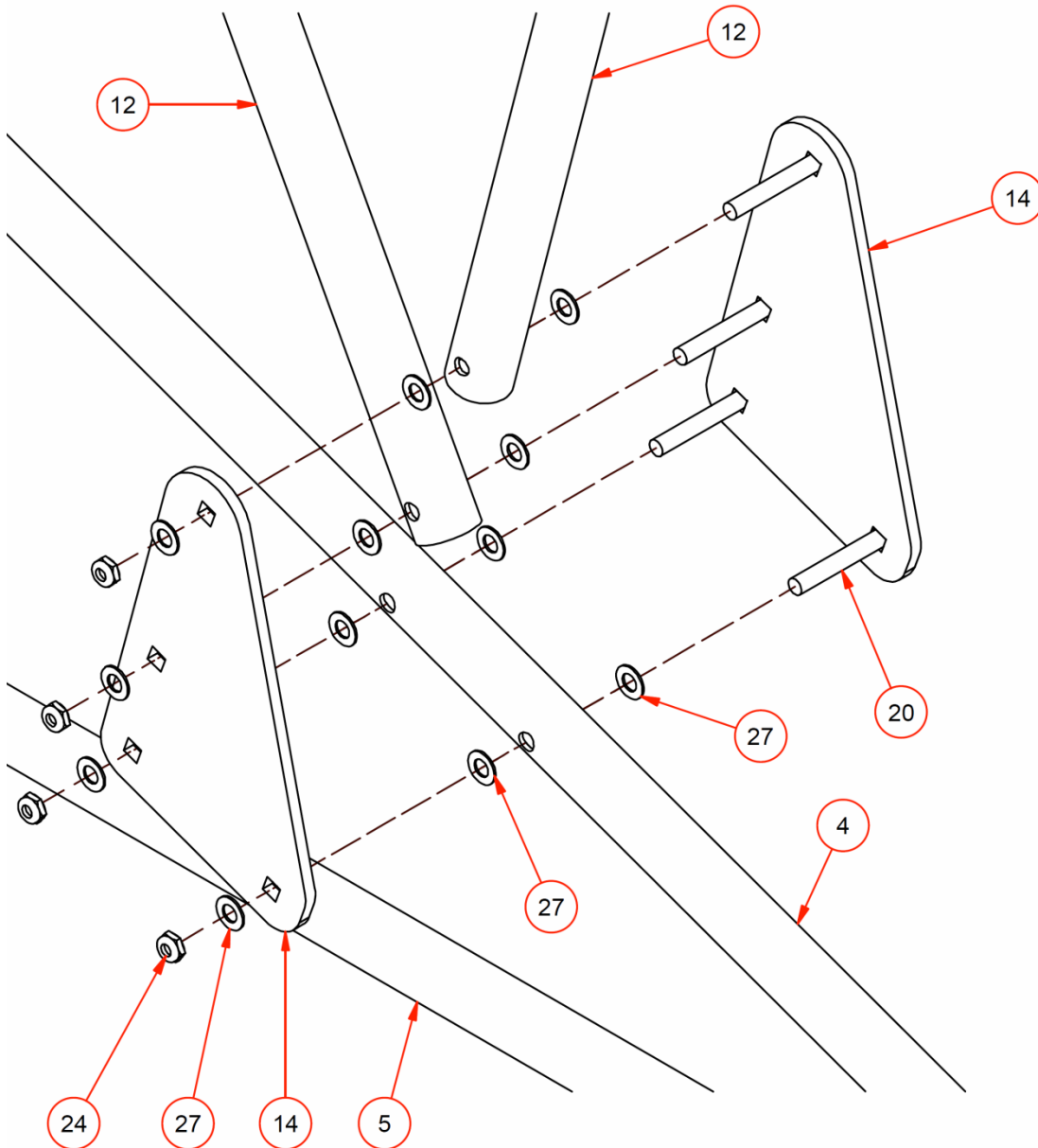
[BBGS-18] FIGURE #5

6. Assemble all parts as shown.

*Note: it is important to use the washers as shown to prevent moving parts (12) from binding.*

*Note: Do not over tighten hardware.*

ITEM	QTY	DESCRIPTION
4	2	HORIZONTAL FRAME PIPE x 98-3/4" LONG
5	2	HORIZONTAL FRAME PIPE x 91" LONG
12	4	FRAME SIDE HINGE PIPE x 70" LONG
14	4	BIG GRAND SLAM LEAGUE PLATE
20	16	1/2"-13 x 3-1/2" CARRIAGE BOLT, ZP
24	18	1/2"-13 THIN NYLON LOCK NUT, ZP
27	52	1/2" WASHER, ZP

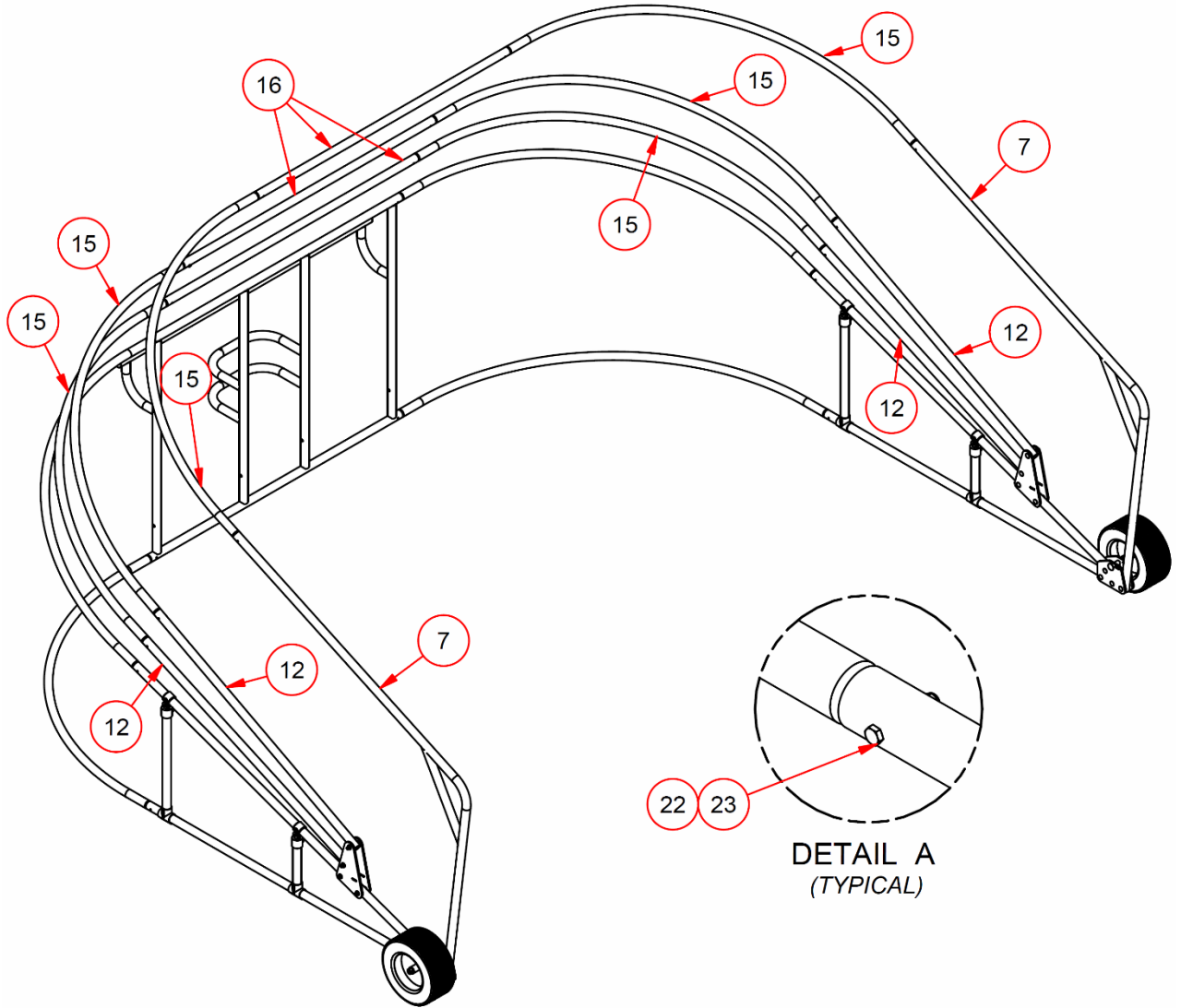


[BBGS-18] FIGURE #6



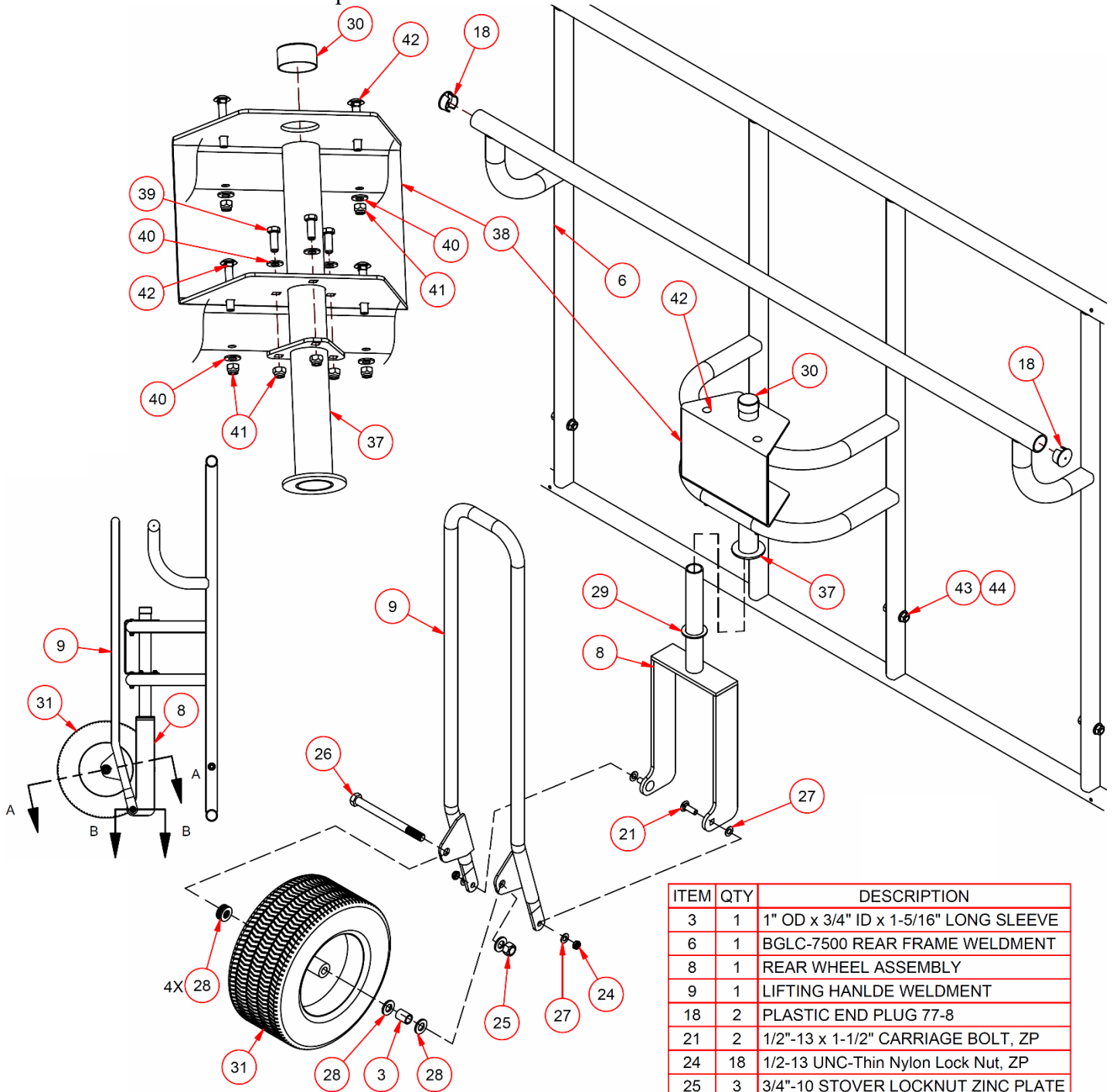
7. Assemble curved pipe (15) to 78" long pipe (16).
8. Assemble curved pipe (15) to 70" long pipe (12).
9. Assemble curved pipe (15) to L-shape pipe (7).

ITEM	QTY	DESCRIPTION
7	2	BBGS-22 FRONT ANGLED SECTION
12	4	FRAME SIDE HINGE PIPE x 70" LONG
15	10	CURVED FRAME PIPE, SWAGED 2X
16	3	UPPER FRAME HORIZONTAL PIPE x 78" L
22	20	5/16-18 UNC-Nylon Lock Nut-ZP-GrNC
23	20	5/16-18 x 2-1/4 HEX CAP SCREW-ZP-GrNC



[BBGS-18] FIGURE #7

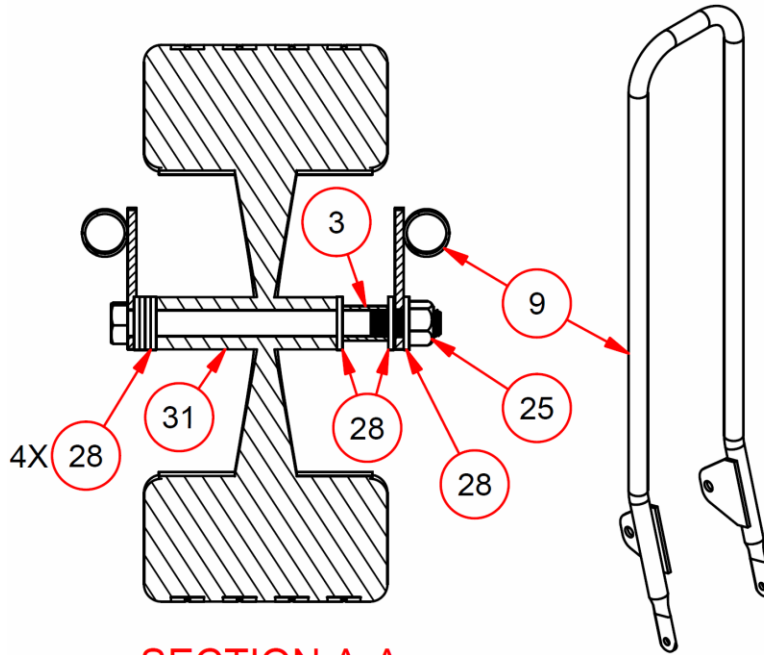
10. Assemble all parts as shown.



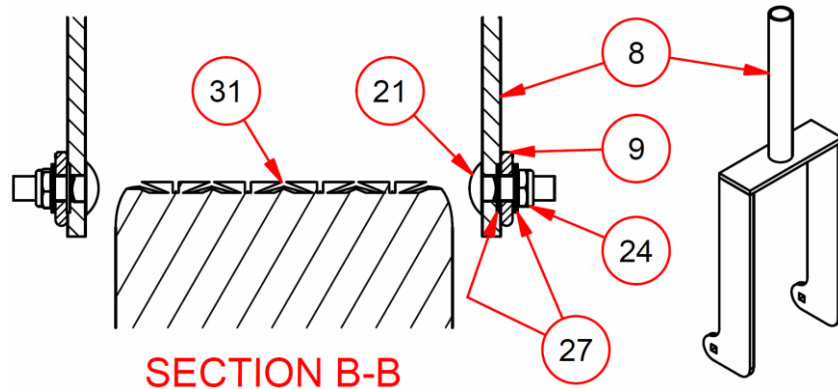
[BBGS-18] FIGURE #8

ITEM	QTY	DESCRIPTION
3	1	1" OD x 3/4" ID x 1-5/16" LONG SLEEVE
6	1	BGLC-7500 REAR FRAME WELDMENT
8	1	REAR WHEEL ASSEMBLY
9	1	LIFTING HANLDE WELDMENT
18	2	PLASTIC END PLUG 77-8
21	2	1/2"-13 x 1-1/2" CARRIAGE BOLT, ZP
24	18	1/2-13 UNC-Thin Nylon Lock Nut, ZP
25	3	3/4"-10 STOVER LOCKNUT ZINC PLATE
26	1	3/4-10 x 9" HEX CAP SCREW-ZP-Gr5
27	52	1/2" WASHER, ZP
28	13	3/4 SAE WASHER, ZP
29	1	2-1/2" WASHER SHIM
30	1	1 1/2" END CAP
31	3	6/650 x 8 PNEUMATIC WHEEL
37	1	REAR WHEEL RECEIVER
38	1	REAR WHEEL JACK BRACKET
39	3	3/8-16 x 1 HEX CAP SCREW-ZP-GrNC
40	7	3/8 SAE WASHER-ZP-GrNC
41	7	3/8-16 UNC-Nylon Lock Nut-ZP-GrNC
42	4	3/8-16 x 2 1/2 CARRIAGE BOLT GRD 5
43	4	9/16 - 12 FLANGE LOCK NUT, ZP
44	4	9/16-12 x 2-1/2 HEX CAP SCREW, ZP

ITEM	QTY	DESCRIPTION
3	1	1" OD x 3/4" ID x 1-5/16" LONG SLEEVE
8	1	REAR WHEEL ASSEMBLY
9	1	LIFTING HANDLE WELDMENT
21	2	1/2"-13 x 1-1/2" CARRIAGE BOLT, ZP
24	18	1/2-13 UNC-Thin Nylon Lock Nut, ZP
25	3	3/4"-10 STOVER LOCKNUT ZINC PLATE
27	52	1/2" WASHER, ZP
28	13	3/4 SAE WASHER, ZP
31	3	6/650 x 8 PNEUMATIC WHEEL



**SECTION A-A**

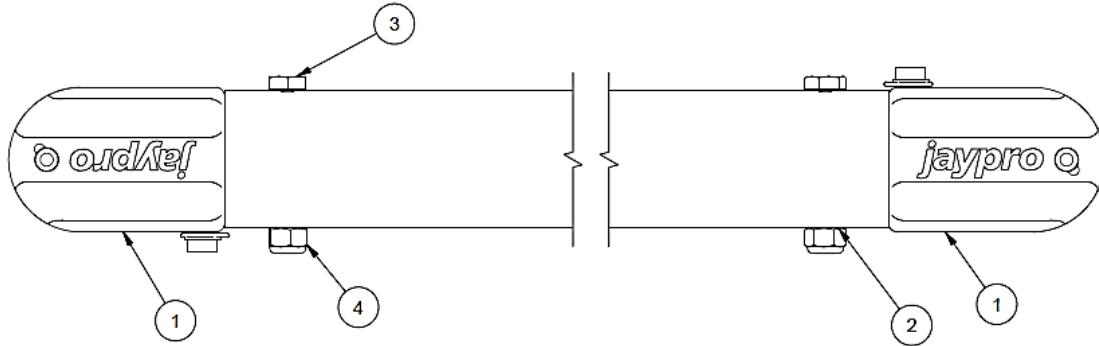


**SECTION B-B**

[BBGS-18] FIGURE #8.1

**Assemble struts: (BBS123)**

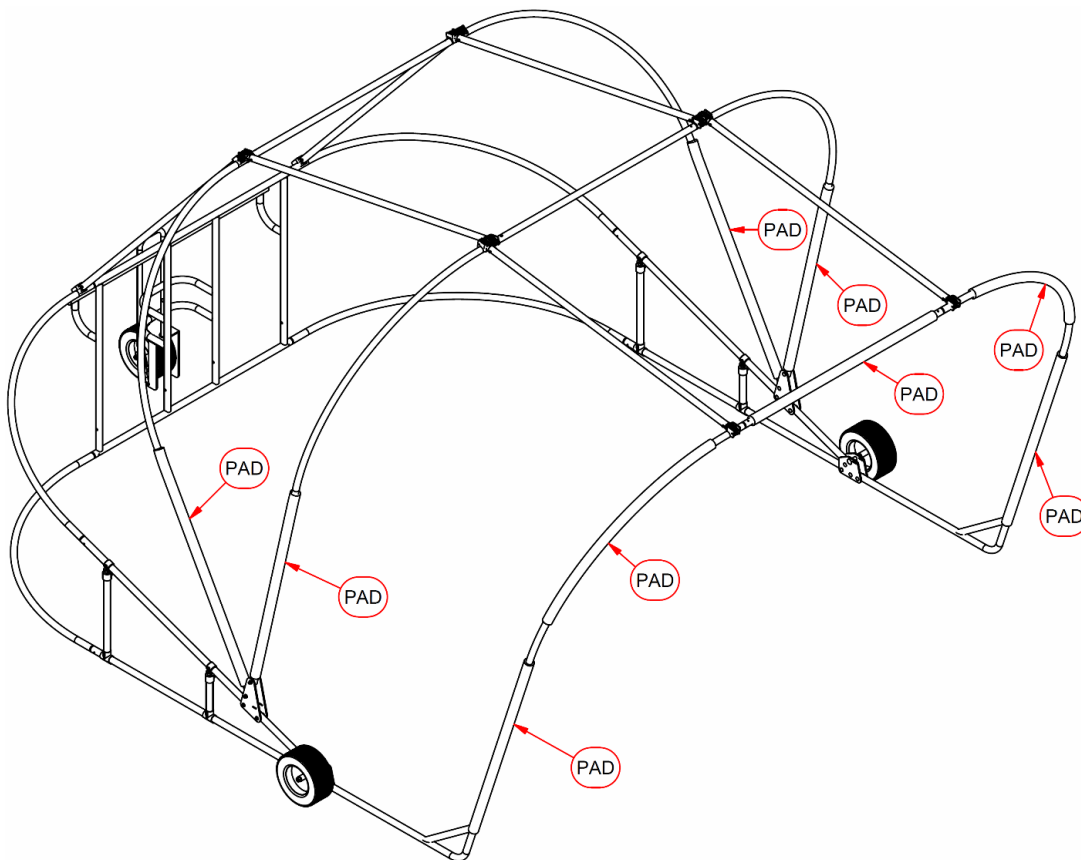
ITEM	QTY	PART #	DESCRIPTION
1	2	AF5016A	1.90" CAST STRUT CLAMP
2	1	BBS123-1	BOLT-ON LITTLE SLAM STRUT
3	2	HS5015	5/16-18 x 2-1/4 HEX CAP SCREW-ZP-GrNC
4	2	HN261	5/16-18 UNC-Nylon Lock Nut-ZP-GrNC



**After the frame is fully assembled check all hardware to make sure it is tightened and all joints are secured. Raise the upper frame arches into position, using the strut pipes, and check for alignment. (See setup instructions)**

**Attach padding:**

1. Apply foam padding as shown and secure with black gaffers tape.



[BBS-18] FIGURE #9

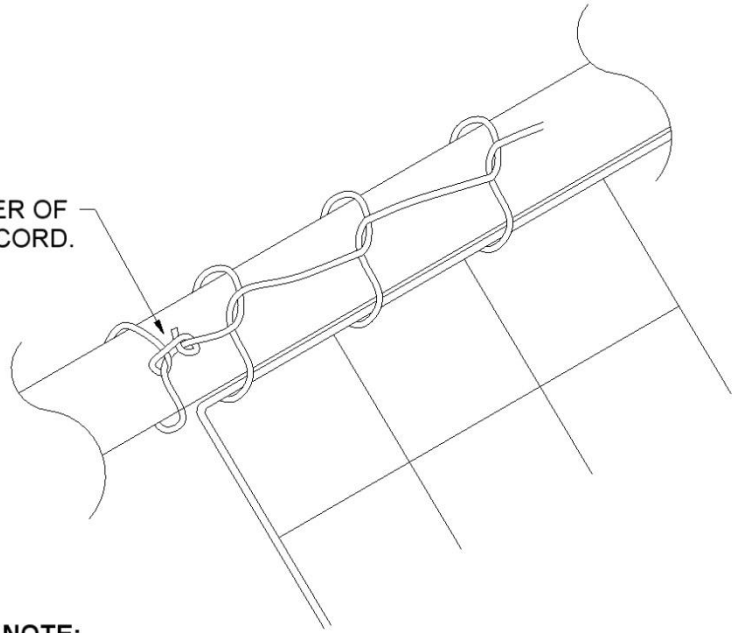


## **Attach net:**

Description: The outer perimeter of the net is to be fully laced to both the front arch and the top member of the lower frame. (See detail showing how to lace if unfamiliar with lacing). The net will be suspended off the center two arches, by about 6”.

1. Cut a couple dozen 18” long cords from the roll of 1/8” black cord.
2. Remove the net and spread it out in front of the cage.
3. Locate the tags that call out the FRONT CORNERS, FRONT TOP and MIDDLE BACK.
4. With the frame in the folded position, take the section labeled FRONT TOP and position it in the center of the top center crossbar. Using one of the temporary cords tie off the net to the crossbar. Using additional cord pieces, tie off the leading edge of the net every couple of feet to either side of the center. Continue tying off the net, working towards the front.
5. When done, verify that the net is truly centered and the labels, LEFT FRONT CORNER and RIGHT FRONT CORNER (*when looking into the cage*), are in the proper corners. Note: If the labels are reversed it means the net is upside down and the baffle will end up on the wrong side (outside) of the cage – reverse the net if needed.
6. Shift the net, from side to side, as needed to center it.
7. Once the net is properly centered, go back to the TOP FRONT center point and lace the leading edge of net securely to the front arch. Starting from the center, lace to one side and then the other.
8. After the net is fully laced to the front arch – from the rear of the cage, carefully raise the front arch section using two struts.
9. Locate the next reinforced section of the net (about 8’ back from the front edge) and loosely tie it in place to the 2<sup>nd</sup> arch using the temporary positioning cords. Again, start at the middle and work to either side, tying off every couple of feet. The net should hang at least 6” away from the tubing to lessen any potential ricochet.
10. Raise the 2<sup>nd</sup> arch, using two strut and repeat step 9 for the third arch. When complete raise the third arch into position.
11. Starting at the center, tie off (every couple of ft) the net to the top member of the lower frame. Center the net, from side to side as needed, and then fully lace the back and bottom edge of the net to the top member of the lower frame.
12. Adjust the length and position of the cords on the 2<sup>nd</sup> and 3<sup>rd</sup> arches, so the net is properly positioned. Securely tie each cord. This can be done using a stepladder, with the frame in the raised position, or by lowering the frame and adjusting one section at a time.

TIE OFF ONE CORNER OF THE NET WITH LACING CORD.



**PLEASE NOTE:**

- THE TYPE OF MATERIAL AND SIZE OF THE MESH WILL DETERMINE THE APPROPRIATE LACING DIMENSION.
- ALWAYS LACE CLOSE ENOUGH TO PREVENT THE PLAYING BALL FROM PASSING THROUGH ANY GAPS.
- USE HALF HITCH TYPE KNOTS ALONG THE LENGTH OF YOUR FRAME.
- DRAW EACH KNOT TIGHT BEFORE CONTINUING.

**Attach skirt:**

1. Fully raise the upper portion of the cage.
2. Attach the vinyl skirt to the top and bottom pipes of the lower frame, using the zip ties or black cord rope cut at 18" long.
3. For best results, start at the center and work out to the front corners.

## SET-UP AND TRANSPORT

### Raising and Lowering the Upper Cage:

*NOTE: At least two people are required for the following steps.*

**Caution:** Keep body parts clear of pinch points between pipes and fittings.

1. Two struts are required to raise and support each arch. The raising of each arch must be done in tandem, with equal pressure and extension.
2. Attach one end of two struts to top front frame horizontal pipe, secure in place with a quick release pin or locking claw. Space these apart so that one of the struts is attached at each end of the horizontal frame pipe.
3. Push up and forward on each of the struts attached in the previous step; front section of frame should be moving easily and without binding while raising struts.  
**Caution:** Watch for any binding of frame and/or netting while doing this, stop immediately if anything is caught on frame hardware. Take extreme care while doing these steps to prevent frame and/or net damage.
4. Place bottom end of struts onto next folding frame section, and secure in place with quick release pins or locking claw.
5. Take two more struts and place inboard of the previous two struts on the second frame folding section horizontal pipe. Secure using quick release pins or locking claw.
6. Push up and forward on each of the struts from the previous step; front and second sections of frame should be moving up and forward easily without binding while raising struts.
7. Repeat for the next frame section.
8. Attach the final two struts and move the entire upper frame into position. The entire front of cage may now begin to pull forward due to gravity at this point, and will come to rest on the ground.
9. Place the bottom clamp onto top pipe of the lower frame, and secure in place with quick release pins or locking claw. Some effort may be required to seat these last two fittings in place, depending on net tension and the ground formation in your assembly working area.
10. To disassemble, or 'fold', unit – reverse above steps. Use caution when lowering the frame sections to avoid injury.

After each use inspect all fittings, hardware, pipes, and net for integrity and tightness. Any damage or loose hardware may result in unsatisfactory performance or failure, Contact factory or dealer for replacement parts.



## **TRANSPORTING CAGE:**

- Cage can be transported by going forward or backward. Transporting the cage should be done with 2 or 3 people.

**Note: Cage should only be transported in the fully folded position. Never move cage when fully raised.**

1. To transport the cage fully lower the upper frame. Gather the net and baffle and secure it to the rear frame using some bungee cords.
2. Lift the rear of the cage by lowering or raising the handle. With one operator steering and keeping the rear frame raised, two others are required to push against the cage in the two corners.

## **MAINTENANCE INSTRUCTIONS**

- Conduct a thorough inspection of the cage annually looking for loose bolts and nuts. Due to normal vibration during play, fasteners may work themselves loose. Tighten adequately on a regular basis to prevent injury.
- Apply a small amount of lithium grease to any moving parts, especially axles and wheels. If wheels have zirk fittings, you may inject grease into wheel bearings using a commercially available grease gun.
- Inspect net and padding for wear; contact factory to arrange for replacements or servicing.
- Paint retouching – any commercially available rust-preventive paint is acceptable for touching up chipped paint and areas of rust. Follow paint manufacturer's suggestions for proper application of paint & primer. (All steel parts provided are either galvanized and/or powder coated for extra protection, but priming and painting should be adequate for proper maintenance of equipment after it leaves the factory.)
- Storage: Unit can be stored outside, but if possible protected from the elements. Batting cage is designed with climatized and weather resistant materials, but will age over time. Aging is accelerated if exposed to the weather, especially in Northern regions where freezing is expected during winter months. If possible, as part of seasonal storage, store indoors (net can be removed if desired to extend the life of this item; see catalog or call number listed above if replacement net is needed).