



**--- BIG LEAGUE BATTING CAGE ---**  
**BGLC-7500**



Call Jaypro Sports Equipment at 1-800-243-0533 during regular business hours for technical support.

[www.jaypro.com](http://www.jaypro.com)

**IMPORTANT NOTICE:**

1. BEFORE EACH USE CHECK EQUIPMENT FOR PROPER CONNECTING HARDWARE AND STRUCTURAL INTEGRITY. REPLACE DAMAGED OR MISSING HARDWARE IMMEDIATELY.
2. SECURELY TIGHTEN ALL NUTS AND BOLTS.
3. **NEVER** ALLOW ANYONE TO RIDE ON BATTING CAGE DURING TRANSPORT.
4. USE OF THIS EQUIPMENT OTHER THAN INTENDED, MAY BE HAZARDOUS.
5. ALTERATION OR MODIFICATION OF THIS EQUIPMENT MAY BE HAZARDOUS AND RESULT IN INJURY. FOR REPAIR OR REPLACEMENT, CONTACT YOUR DEALER OR JAYPRO SPORTS.

**LIST OF RECOMMENDED TOOLS & SUPPLIES**

ITEM	DESCRIPTION
1	POWER DRILL WITH 3/16" OR 9/64" DRILL BIT & PHILLIPS BIT
2	BOX WRENCHES, ADJUSTABLE WRENCHES, OR SOCKET SET
3	3/16" & 7/32" ALLEN WRENCH
4	RUBBER MALLET
5	LITHIUM GREASE
6	TAPERED DRIVE ROD (SUPPLIED)
7	8 FT OR 10 FT STEP LADDER
8	RAGS, GREEN SCRUBBING PADS, CLEANING SOLUTION

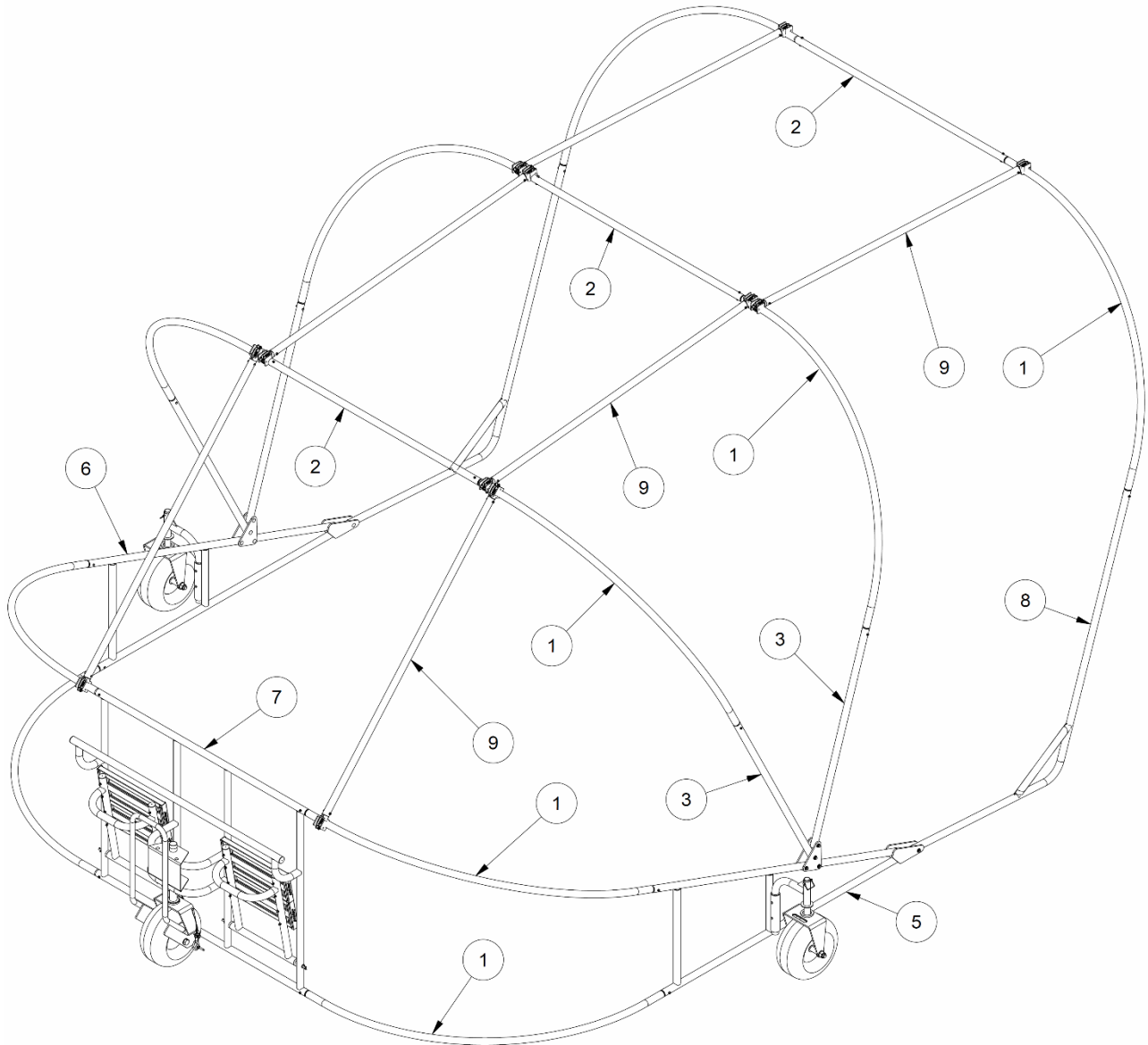
JAYPRO SPORTS  
THE BIG LEAGUE BATTING CAGE, BGLC-7500  
LIST OF MATERIALS (MAIN FRAME)  
NOTE THAT SOME ITEM NUMBERS HAVE BEEN SKIPPED INTENTIONALLY

1	10	BGLC-1	CURVED FRAME PIPE, SWAGED 2X
2	3	BGLC-2	UPPER FRAME HORIZONTAL PIPE x 78" L
3	4	BGLC-3	UPPER FRAME HINGE PIPE x 64" L
4	2	BGLC-5	9/16" x 31" SHAFT STAND
5	1	BGLC-RNGWR	RIGHT SIDE SHORT HANDLE
6	1	BGLC-RNGWL	LEFT SIDE SHORT HANDLE
7	1	BGLC-B	BGLC-7500 REAR FRAME WELDMENT
8	2	BGLC-C	BGLC FRONT FRAME SECTION
9	6	BBS123	STRUT ASSEMBLY
10	1	NGW-C	SIDE WHEEL FRAME WELDMENT
11	1	BGLC-K	REAR WHEEL RECEIVER
12	1	BGLC-LX	HANDLE
13	2	BGLC-N	COACH STAND WELDMENT
14	1	BGLC-P	REAR WHEEL JACK BRACKET
15	4	AR5299	SIDE FRAME HINGE PLATES
16	1	RW5012	18"/8.75" x 8" PNEUMATIC TIRE
17	12	HW5038	1" WASHER, ZP
18	2	HM6340	3/4" x 3/8" SLEEVE BEARING, BRONZE
19	2	HB5072	3/4"-10 x 2" CARRIAGE BOLT, ZP
20	2	HN5065	3/4"-10 NYLON LOCK NUT, ZP
22	2	NGW-S1	1.315 OD x .133w ALUM TUBE 6063 T5
23	4	HM6344	1/8" OD x 1 1/2" COTTER
24	4	HW343	3/4 SAE WASHER-ZP-GrNC
25	4	HB5038	3/8-16 x 2 1/2 CARRIAGE BOLT GRD 5
26	7	HN265	3/8-16 UNC-Nylon Lock Nut-ZP-GrNC
27	4	HW5037	9/16" FLAT WASHER, ZP
28	7	HW2047	3/8 SAE WASHER-ZP-GrNC
29	22	HW2044	1/2 SAE WASHER-ZP-GrNC
30	1	RP473	1 1/2" END CAP
36	10	HB5051	1/2"-13 x 3 1/2" CARRIAGE BOLT, ZP
37	10	HN268	1/2-13 UNC-Thin Nylon Lock Nut-ZP-GrNC
38	36	HN261	5/16-18 UNC-Nylon Lock Nut-ZP-GrNC
39	20	HS5015	5/16-18 x 2-1/4 HEX CAP SCREW-ZP-GrNC
40	6	EP0019	PLASTIC END PLUG 77-8
41	2	EP0009	1-1/4" END CAP
42	4	PLANK-A	9 1/2" x 1 1/2" x 24" PLANK
43	16	AR5044	5/16" BOLT CLIP
44	16	HB5030	5/16-18 x 3 CARRIAGE BOLT ZP
45	8	AR5045A	9 1/2" ALUMINUM SEAT PLANK END CAP
46	16	HS5035	#8 x 1/2" PAN HEAD PHILIP SCREW SELF DRILL, ZP
47	3	HS286	3/8-16 x 1 HEX CAP SCREW-ZP-GrNC
49	1	HS5356	1"-8 x 12" HEX HEAD CAP SCREW Zinc Plated
50	1	90566A253	1"-8 THIN NYLON LOCK NUT
51	1	HM6345	3/8" QUICK RELEASE PIN 1" LONG
52	1	RP5041	NYLON LANYARD 10" NL93-10-226
53	1	HS4096	1/4-20 x 3/4 HEX CAP SCREW-ZP-GrNC
54	1	HN5073	1/4-20 UNC-Thin Nylon Lock Nut-ZP-GrNC
55	2	RR5035	48" BUNGIE CORDS W/ HOOKS STL CORE

## ASSEMBLY INSTRUCTIONS

- Unpack all parts and check against parts list to ensure that all have been included.
- Inspect all parts for damage. Report any damages to the trucking company.
- Select a large clear flat area to assemble the cage.

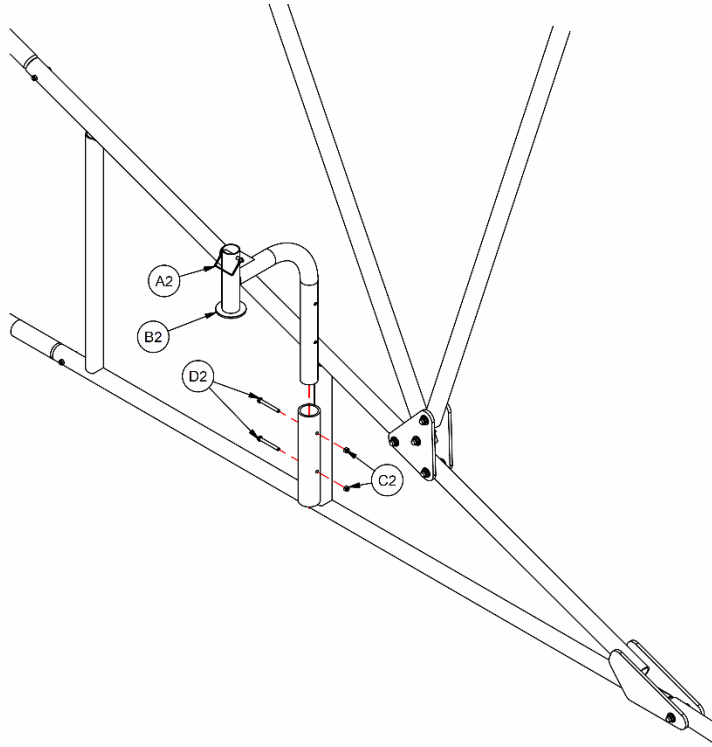
### **BGLC-7500 QUICK REFERENCE (SEE EXPLODED VIEWS OF DIFFERENT SECTIONS FOR HARDWARE CALLOUTS)**



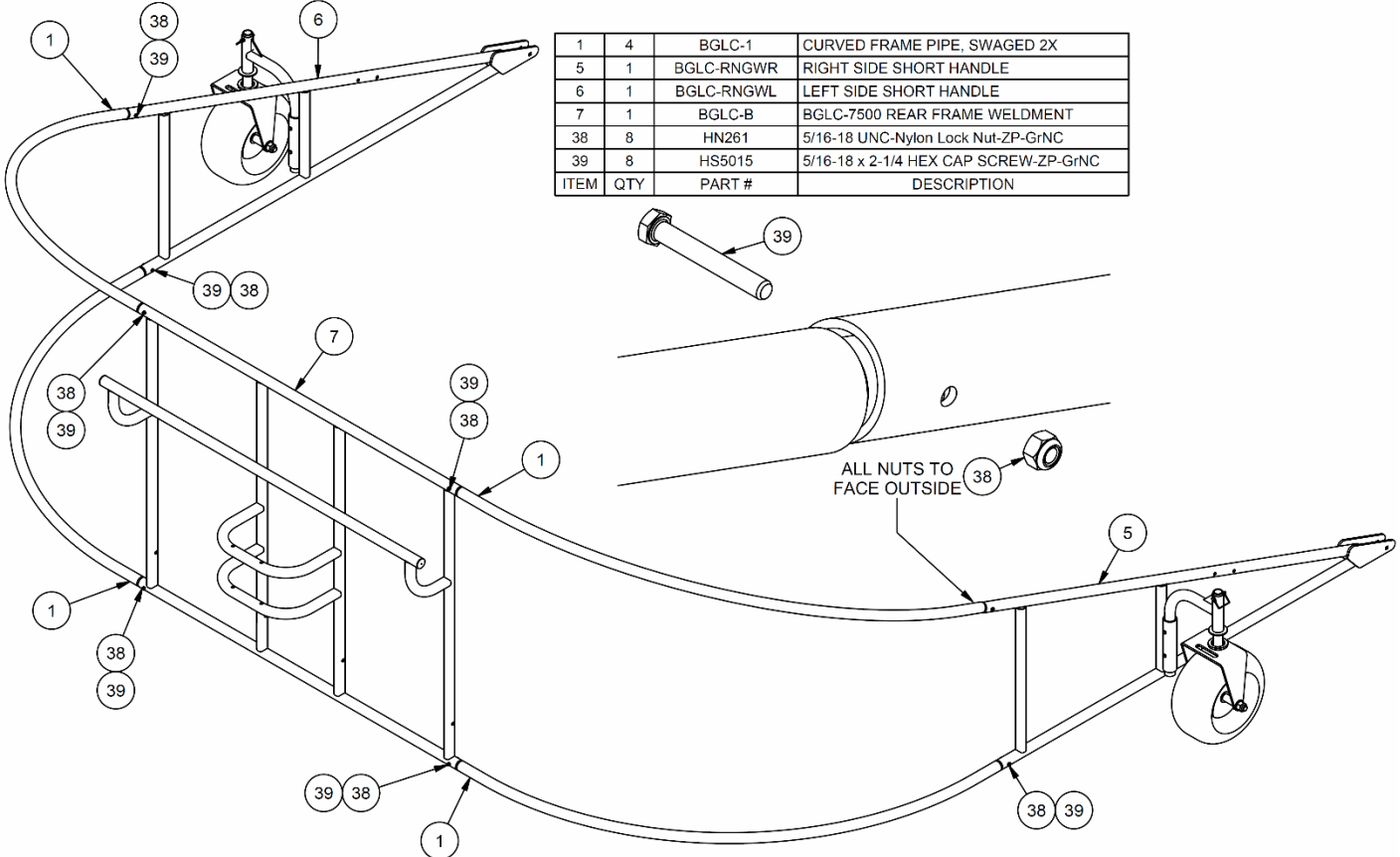
1	10	BGLC-1	CURVED FRAME PIPE, SWAGED 2X
2	3	BGLC-2	UPPER FRAME HORIZONTAL PIPE x 78" L
3	4	BGLC-3	UPPER FRAME HINGE PIPE x 64" L
5	1	BGLC-RNGWR	RIGHT SIDE SHORT HANDLE
6	1	BGLC-RNGWL	LEFT SIDE SHORT HANDLE
7	1	BGLC-B	BGLC-7500 REAR FRAME WELDMENT
8	2	BGLC-C	BGLC FRONT FRAME SECTION
9	6	BBLS123	STRUT ASSEMBLY
ITEM	QTY	PART #	DESCRIPTION

**Assemble side frames: (Attach wheel frames)**

Preassembled Side Frame Parts List			
ITEM	QTY	PART NUMBER	DESCRIPTION
A2	1	HM233	5/16 x 2 3/4 WIRE LOCK PIN ZP
B2	1	NGW-A	WHEEL SWIVEL ARM
C2	2	HN261	5/16-18 UNC-Nylon Lock Nut-ZP-GrNC
D2	2	HS5024	5/16-18 x 2-3/4 HEX CAP SCREW-ZP-GrNC

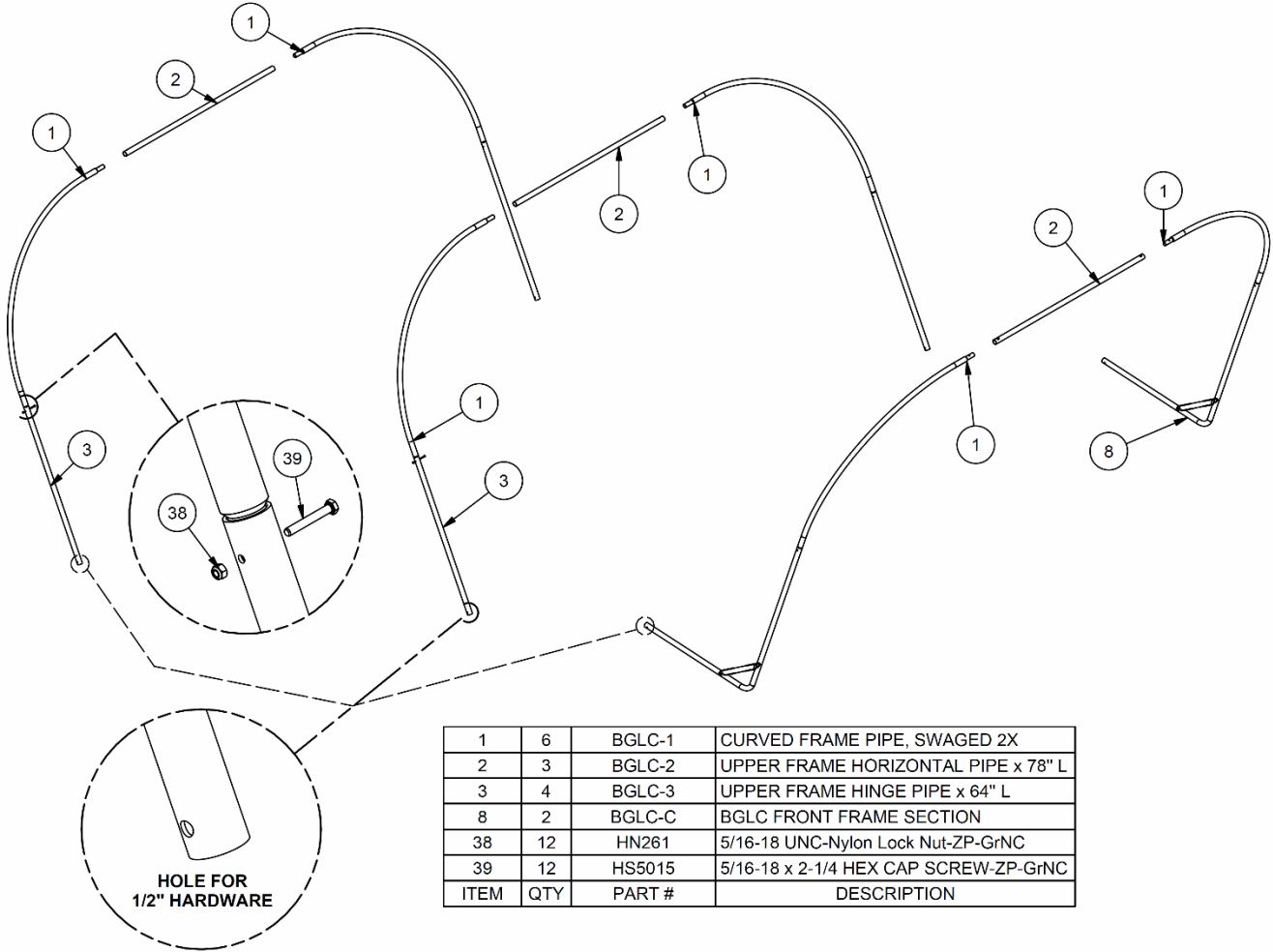


**Assemble lower frame: (Note: Used tapered drive rod (supplied) to help align holes)**



**Build and attach top frames sections: (One at a time)**

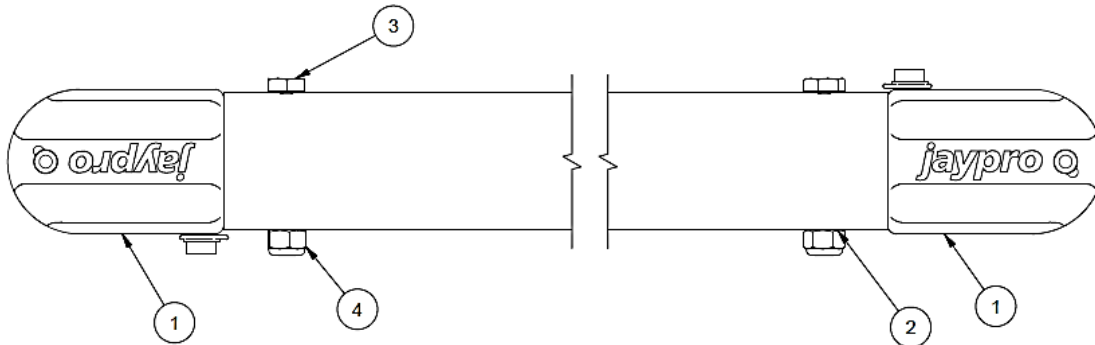
1. Note that one end of pipe is for 1/2" hardware for item # 3 & 8.



1	6	BGLC-1	CURVED FRAME PIPE, SWAGED 2X
2	3	BGLC-2	UPPER FRAME HORIZONTAL PIPE x 78" L
3	4	BGLC-3	UPPER FRAME HINGE PIPE x 64" L
8	2	BGLC-C	BGLC FRONT FRAME SECTION
38	12	HN261	5/16-18 UNC-Nylon Lock Nut-ZP-GrNC
39	12	HS5015	5/16-18 x 2-1/4 HEX CAP SCREW-ZP-GrNC
ITEM	QTY	PART #	DESCRIPTION

**Assemble struts: (BBL123)**

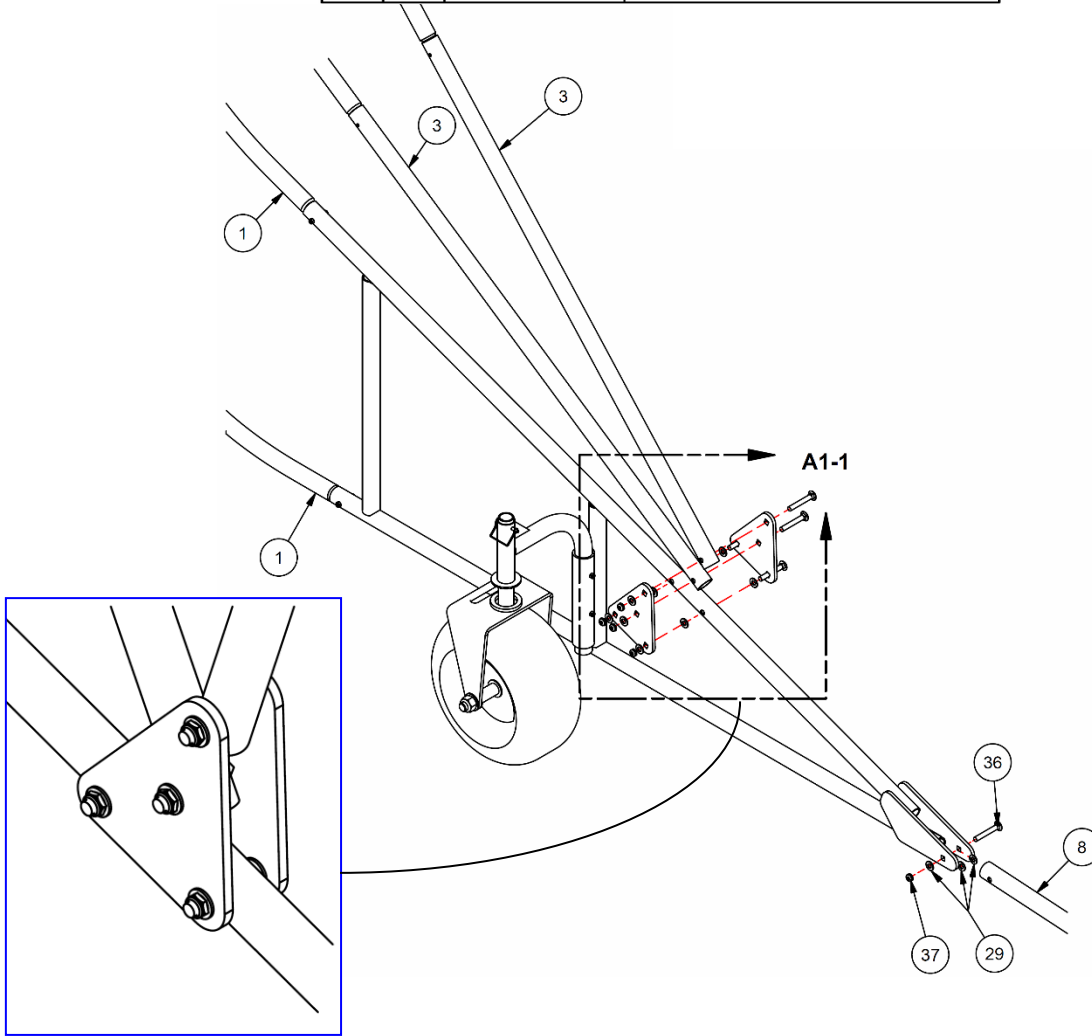
ITEM	QTY	PART #	DESCRIPTION
1	2	AF5016A	1.90" CAST STRUT CLAMP
2	1	BBL123-1	BOLT-ON LITTLE SLAM STRUT
3	2	HS5015	5/16-18 x 2-1/4 HEX CAP SCREW-ZP-GrNC
4	2	HN261	5/16-18 UNC-Nylon Lock Nut-ZP-GrNC

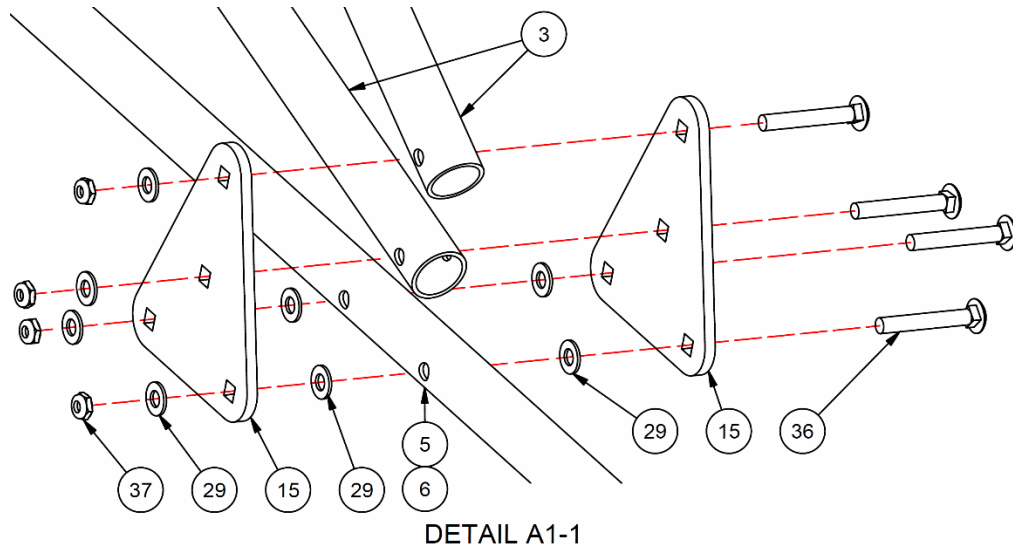


**Attach side hinge support frame:**

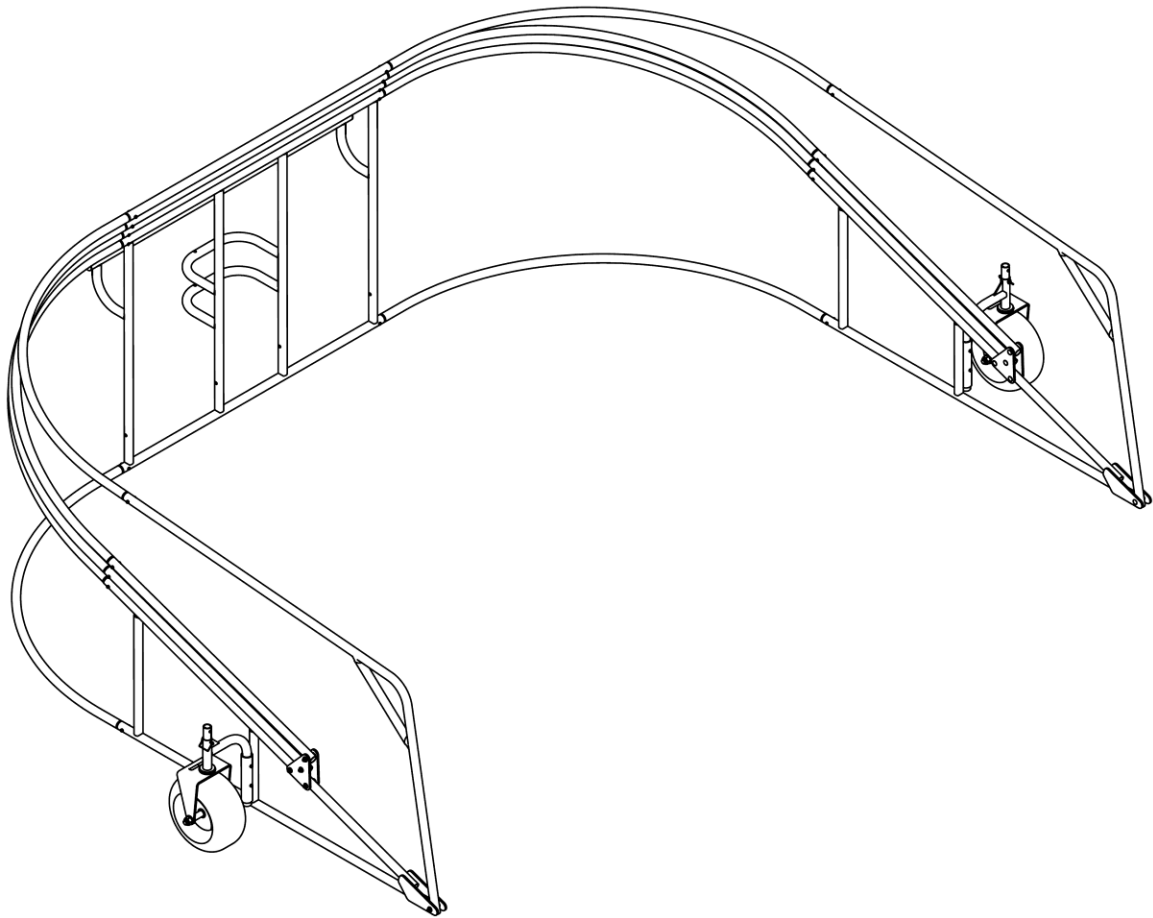
NOTE:  
1) QTY IS FOR BOTH SIDES.

1	10	BGLC-1	CURVED FRAME PIPE, SWAGED 2X
3	4	BGLC-3	UPPER FRAME HINGE PIPE x 64" L
5	1	BGLC-RNGWR	RIGHT SIDE SHORT HANDLE
6	1	BGLC-RNGWL	LEFT SIDE SHORT HANDLE
8	2	BGLC-C	BGLC FRONT FRAME SECTION
29	22	HW2044	1/2 SAE WASHER-ZP-GrNC
36	10	HB5051	1/2"-13 x 3 1/2" CARRIAGE BOLT, ZP
37	10	HN268	1/2-13 UNC-Thin Nylon Lock Nut-ZP-GrNC
ITEM	QTY	PART #	DESCRIPTION

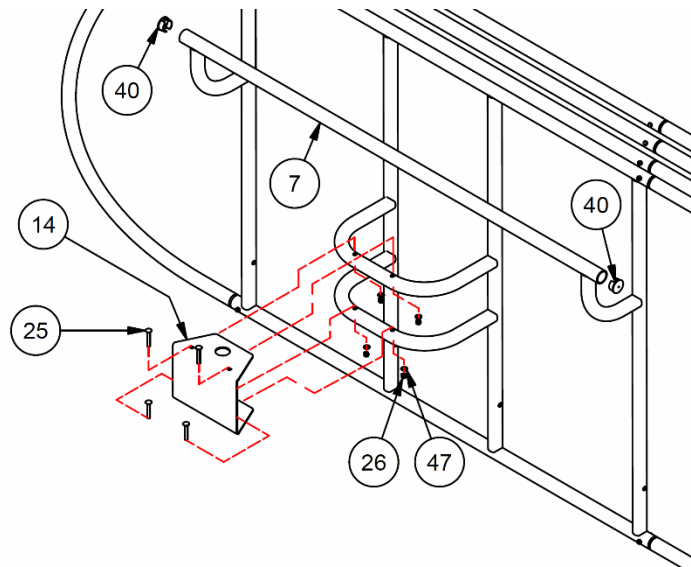
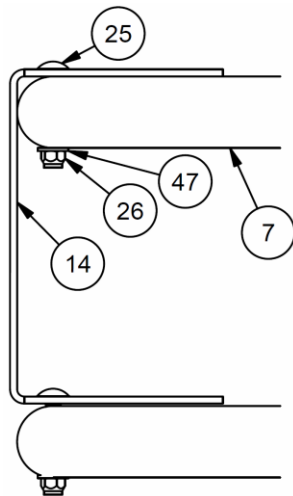




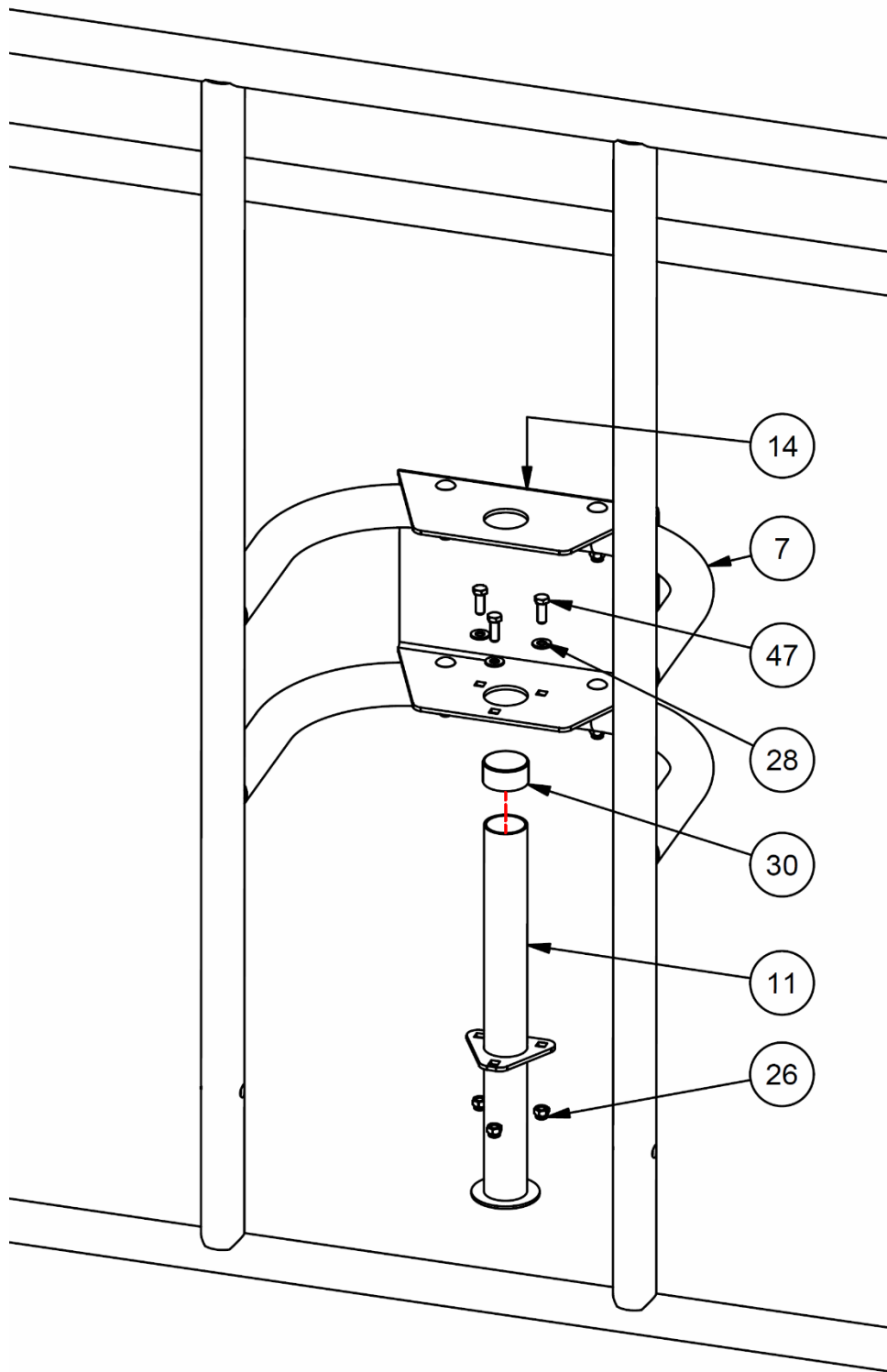




**Attach rear wheel support frame:**



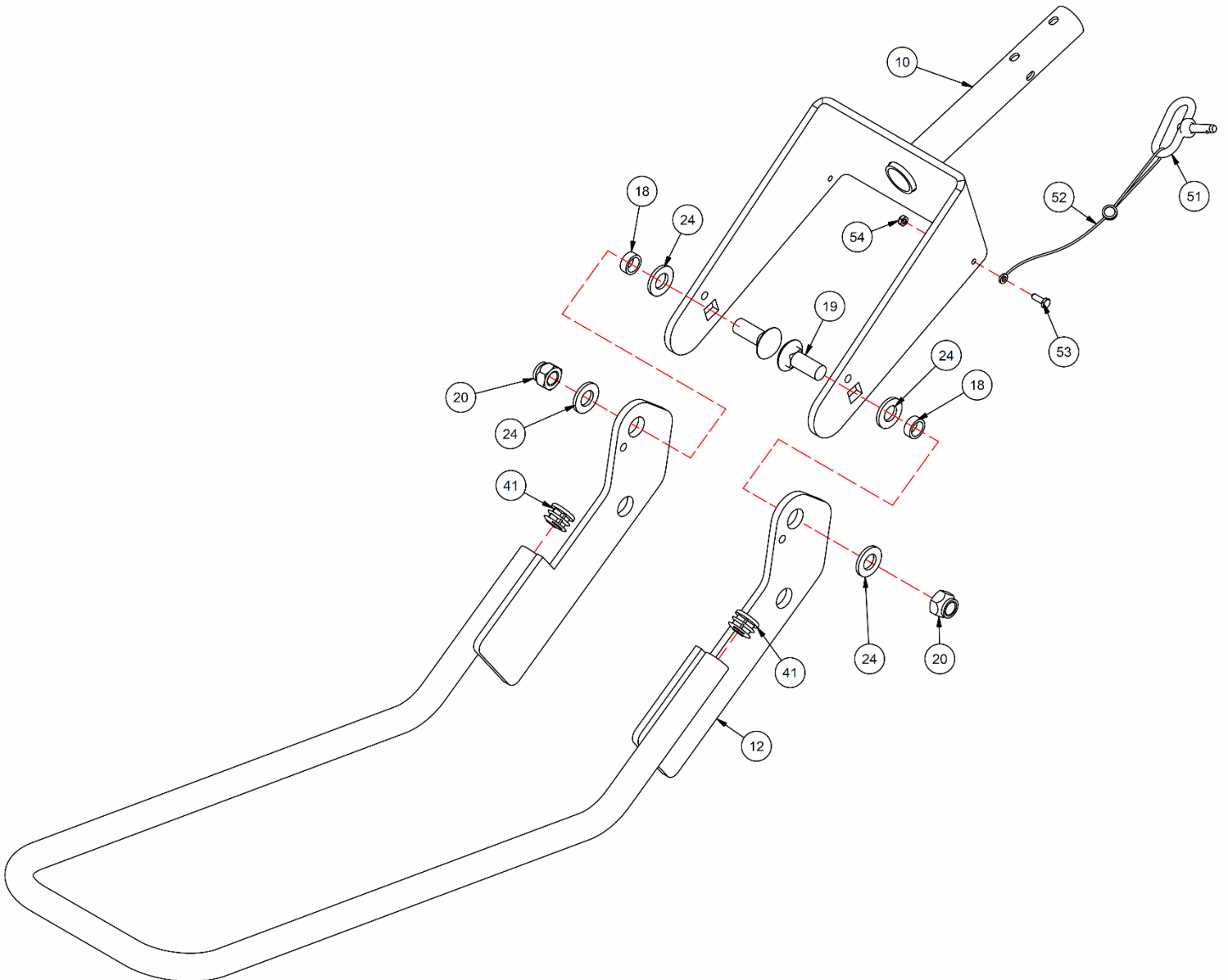
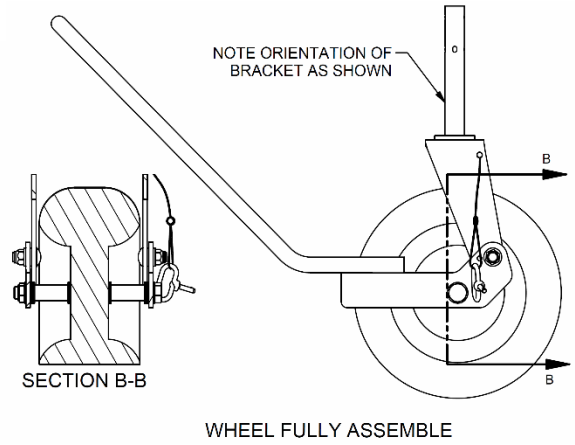
7	1	BGLC-B	BGLC-7500 REAR FRAME WELDMENT
14	1	BGLC-P	REAR WHEEL JACK BRACKET
25	4	HB5038	3/8-16 x 2 1/2 CARRIAGE BOLT GRD 5
47	4	HW2047	3/8 SAE WASHER-ZP-GrNC
26	4	HN265	3/8-16 UNC-Nylon Lock Nut-ZP-GrNC
40	2	EP0019	PLASTIC END PLUG 77-8
ITEM	QTY	PART #	DESCRIPTION



7	1	BGLC-B	BGLC-7500 REAR FRAME WELDMENT
11	1	BGLC-K	REAR WHEEL RECEIVER
14	1	BGLC-P	REAR WHEEL JACK BRACKET
26	3	HN265	3/8-16 UNC-Nylon Lock Nut-ZP-GrNC
28	3	HW2047	3/8 SAE WASHER-ZP-GrNC
30	1	RP473	1 1/2" END CAP
47	3	HS286	3/8-16 x 1 HEX CAP SCREW-ZP-GrNC
ITEM	QTY	PART #	DESCRIPTION

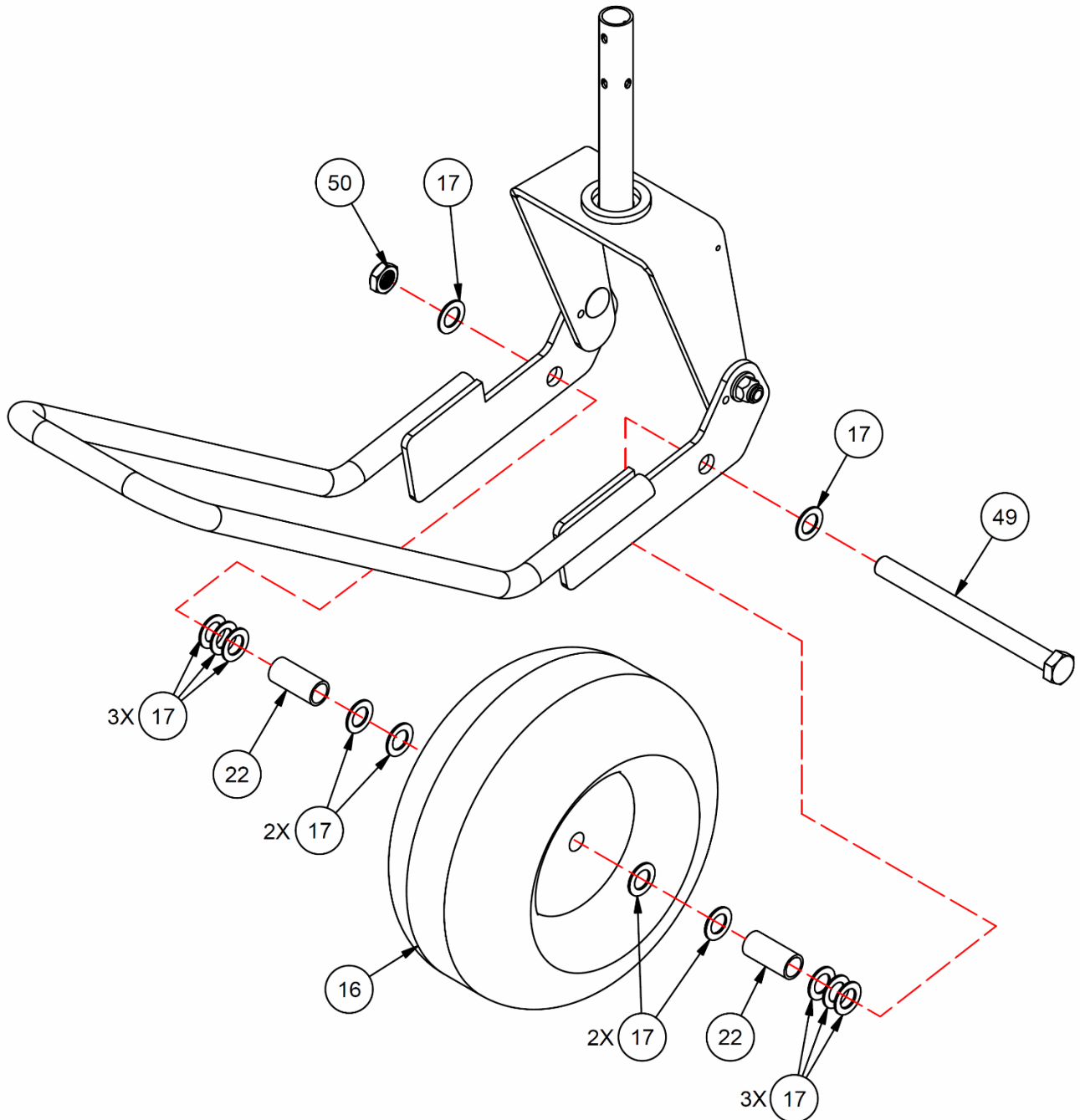
**Build rear wheel frame assembly with handle:**

10	1	NGW-C	SIDE WHEEL FRAME WELDMENT
12	1	BGLC-LX	HANDLE
18	2	HM6340	3/4" x 3/8" SLEEVE BEARING, BRONZE
19	2	HB5072	3/4"-10 x 2" CARRIAGE BOLT, ZP
20	2	HN5065	3/4"-10 NYLON LOCK NUT, ZP
24	4	HW343	3/4 SAE WASHER-ZP-GrNC
41	2	EP0009	1-1/4" END CAP
51	1	HM6345	3/8" QUICK RELEASE PIN 1" LONG
52	1	RP5041	NYLON LANYARD 10" NL93-10-226
53	1	HS4096	1/4-20 x 3/4 HEX CAP SCREW-ZP-GrNC
54	1	HN5073	1/4-20 UNC-Thin Nylon Lock Nut-ZP-GrNC
ITEM	QTY	PART #	DESCRIPTION



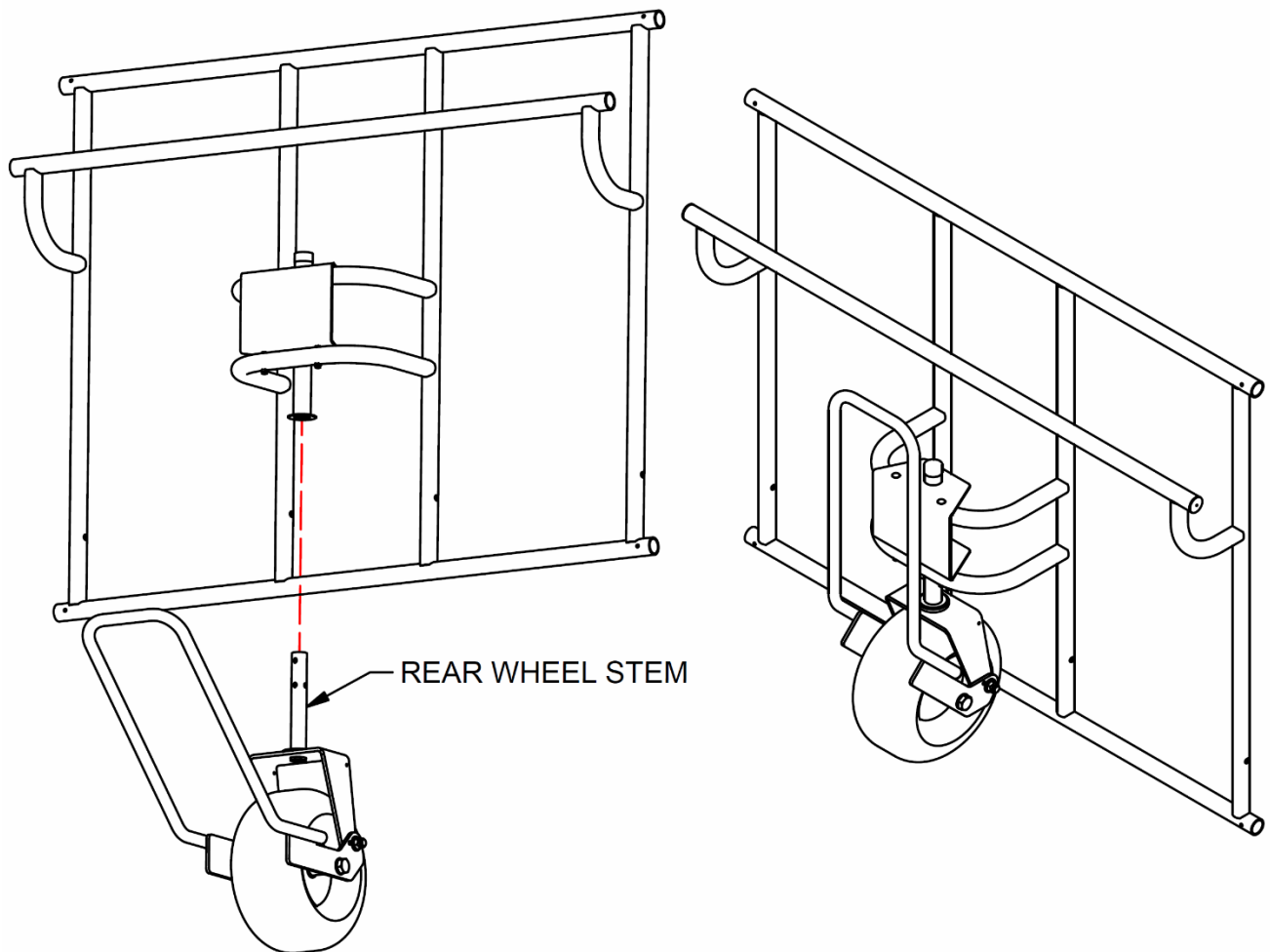
**Install rear wheel:**

16	1	RW5012	18"/8.75" x 8" PNEUMATIC TIRE
17	12	HW5038	1" WASHER, ZP
22	2	NGW-S1	1.315 OD x .133w ALUM TUBE 6063 T5
49	1	HS5356	1"-8 x 12" HEX HEAD CAP SCREW Zinc Plated
50	1	90566A253	1"-8 THIN NYLON LOCK NUT
ITEM	QTY	PART #	DESCRIPTION



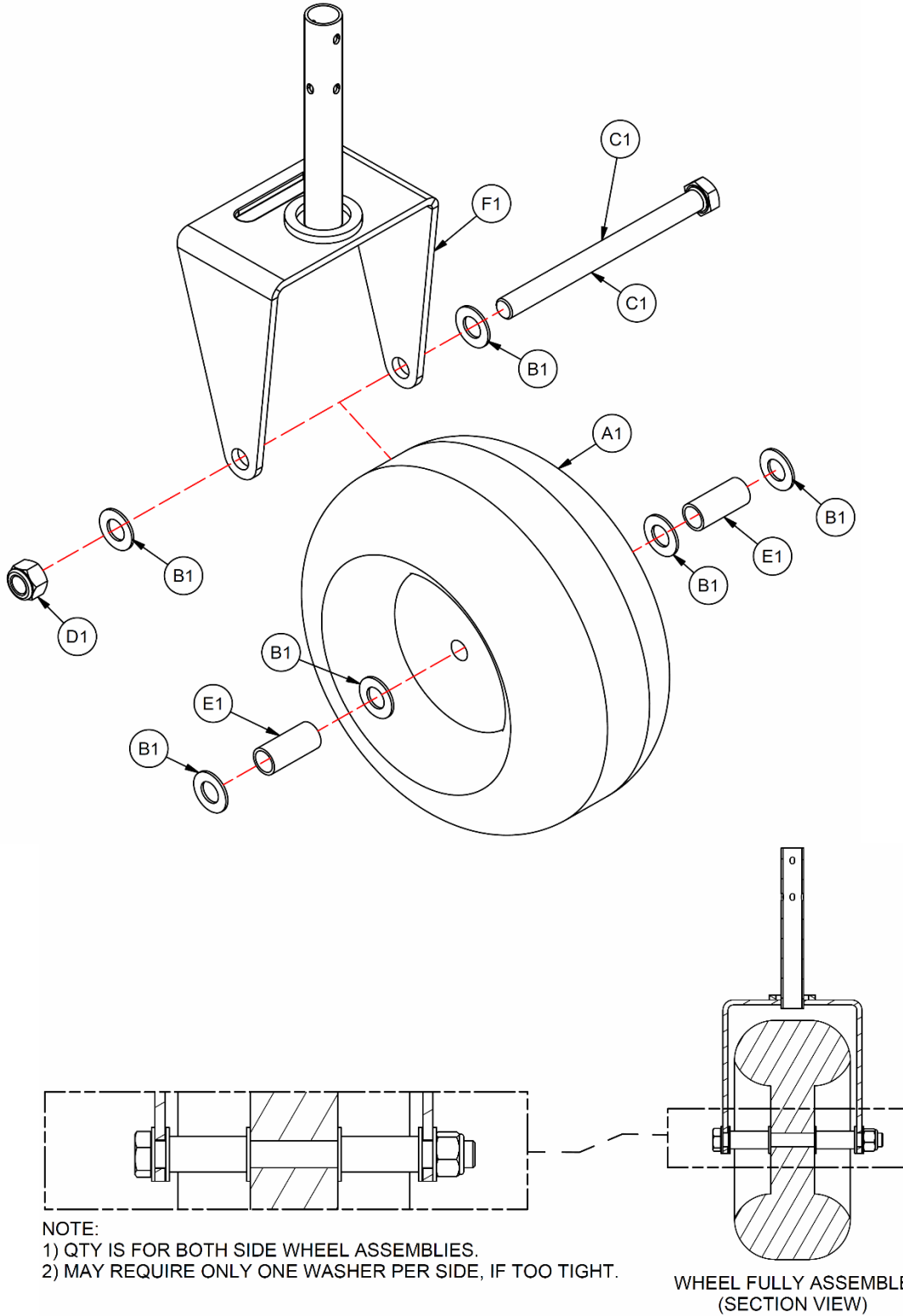
**Install rear wheel assembly:**

- 1) Apply a light amount of lithium grease to the length of the rear wheel stem.
- 2) Lift the rear frame and slide the rear wheel stem into the receiver.



**Build side wheel assembly:**

A1	1	RW5012	18"/8.75" x 8" PNEUMATIC TIRE
B1	6	HW5038	1" GRD 8 SAE FLAT WASHER ZINC PLTD
C1	1	HS5356	1"-8 x 12" HEX HEAD CAP SCREW Zinc Plated
D1	1	HN5086	1"-8 NYLON LOCK NUT ZP
E1	2	NGW-S1	1.315 OD x .133w ALUM TUBE 6063 T5
F1	1	RGN-BL	LEFT HANDLE WHEEL
ITEM	QTY	PART #	DESCRIPTION
Preassembled Wheel Parts List			



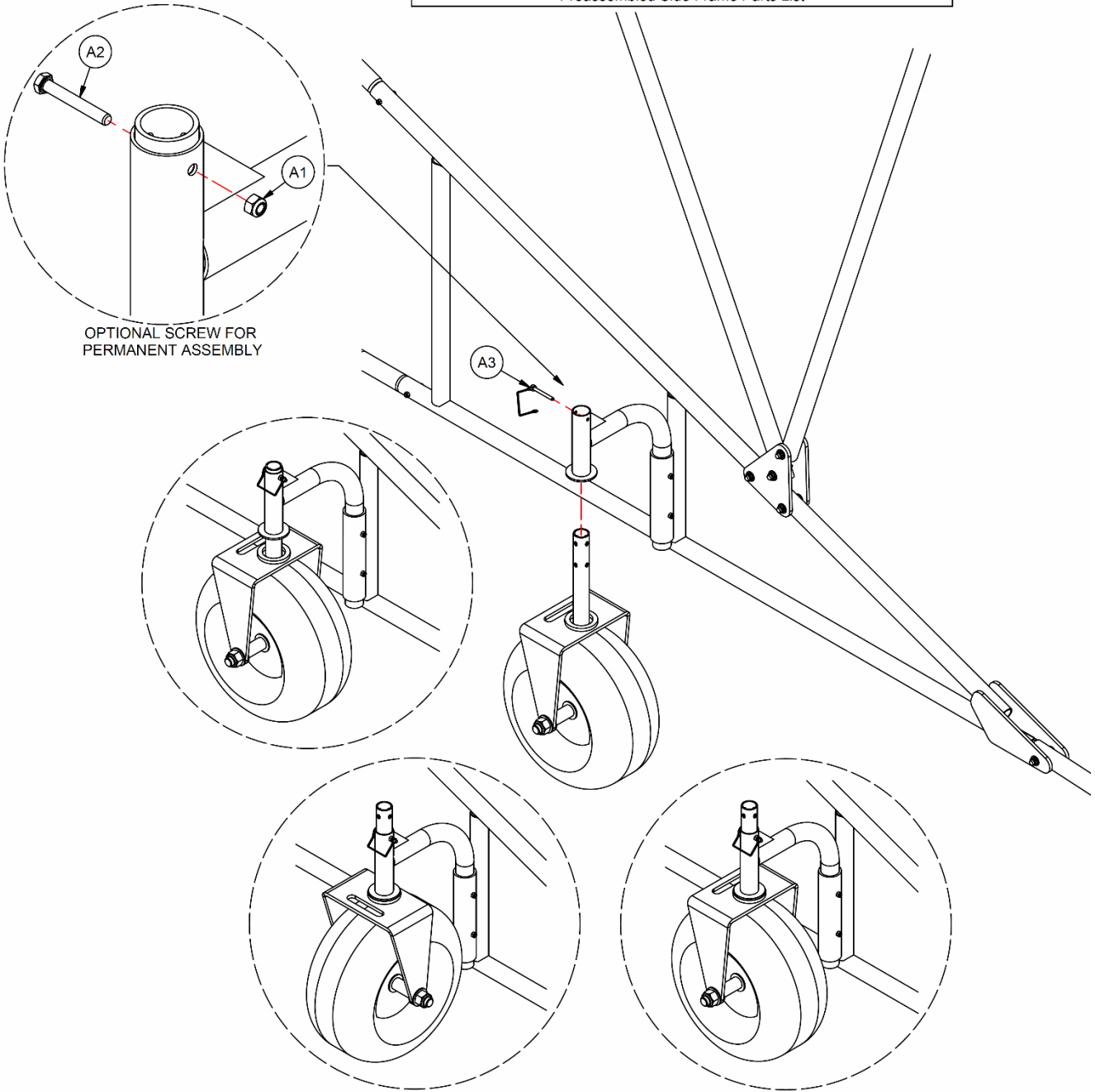
**NOTE:**

- 1) QTY IS FOR BOTH SIDE WHEEL ASSEMBLIES.
- 2) MAY REQUIRE ONLY ONE WASHER PER SIDE, IF TOO TIGHT.

WHEEL FULLY ASSEMBLE  
(SECTION VIEW)

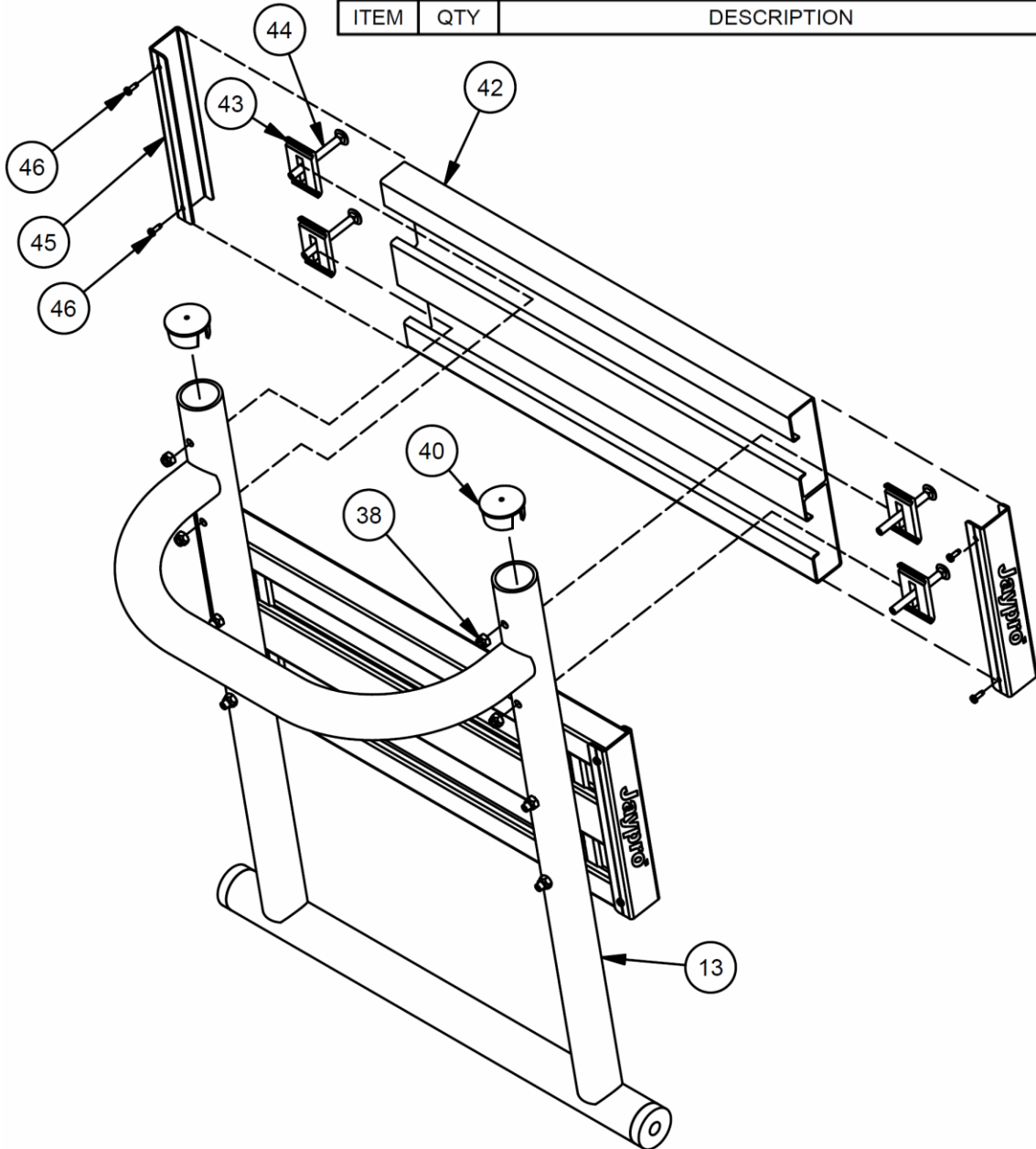
**Install side wheel assembly:**

A1	1	HN261	5/16-18 UNC-Nylon Lock Nut-ZP-GrNC
A2	1	HS5015	5/16-18 x 2-1/4 HEX CAP SCREW-ZP-GrNC
A3	1	HM233	5/16 x 2 3/4 WIRE LOCK PIN ZP
ITEM	QTY	PART NUMBER	DESCRIPTION
Preassembled Side Frame Parts List			

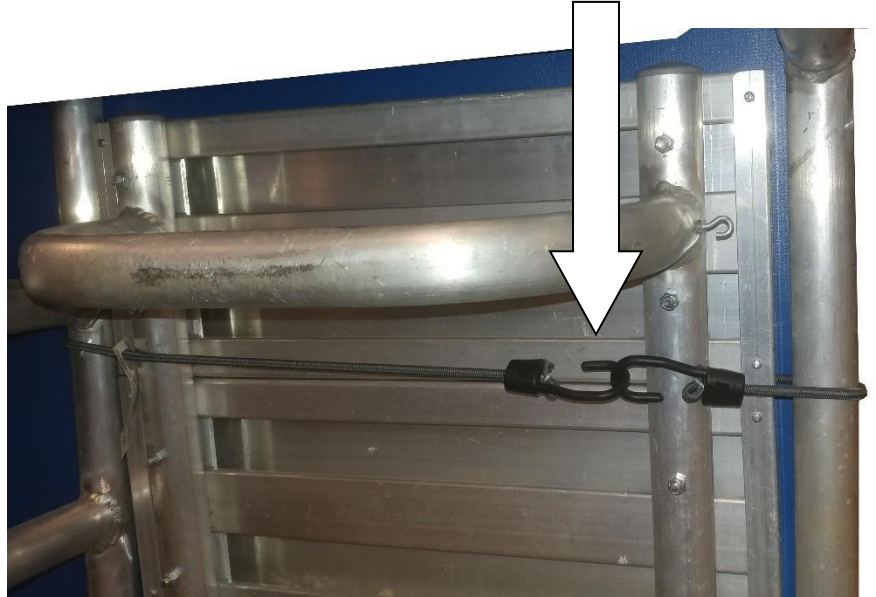
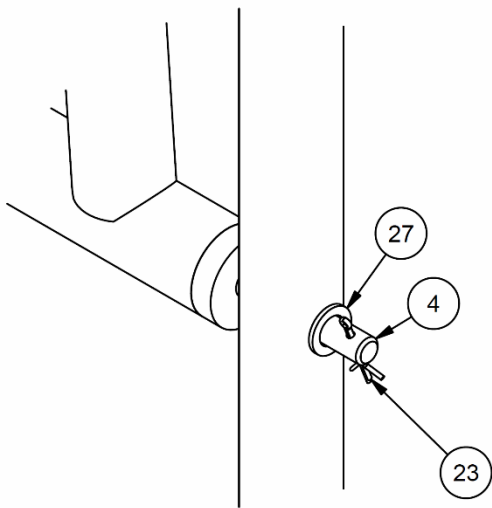
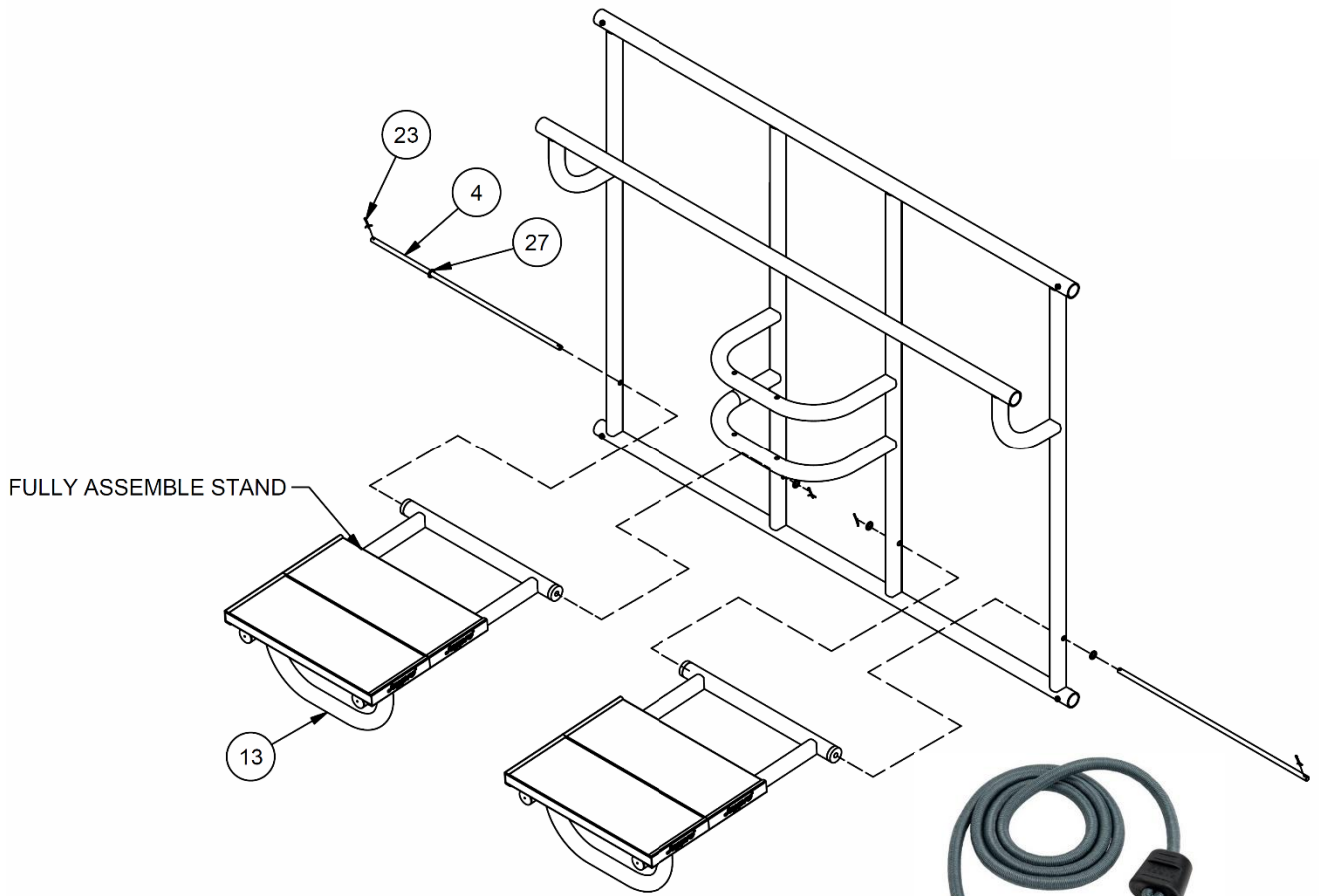


**Coaches stand:**

13	2	COACH STAND WELDMENT
23	4	1/8" OD x 1 1/2" COTTER
27	4	9/16" FLAT WASHER, ZP
38	16	5/16-18 UNC-Nylon Lock Nut-ZP-GrNC
40	4	PLASTIC END PLUG 77-8
42	4	9 1/2" x 1 1/2" x 24" PLANK
43	16	5/16" BOLT CLIP
44	16	5/16-18 x 3 CARRIAGE BOLT ZP
45	8	9 1/2" ALUMINUM SEAT PLANK END CAP
46	16	#8 x 1/2" PAN HEAD PHILIP SCREW SELF DRILL, ZP
55	1	3/8" BUNGEE CORD
56	1	3/8" J-HOOK w/ CLAMPING WIRE
ITEM	QTY	DESCRIPTION







4	2	9/16" x 31" SHAFT STAND
13	2	COACH STAND WELDMENT
23	4	1/8" OD x 1 1/2" COTTER
27	4	9/16" FLAT WASHER, ZP
ITEM	QTY	DESCRIPTION

After the frame is fully assembled check all hardware to make sure it is tightened and all joints are secured. Raise the upper frame arches into position, using the strut pipes, and check for alignment. (See setup instructions)

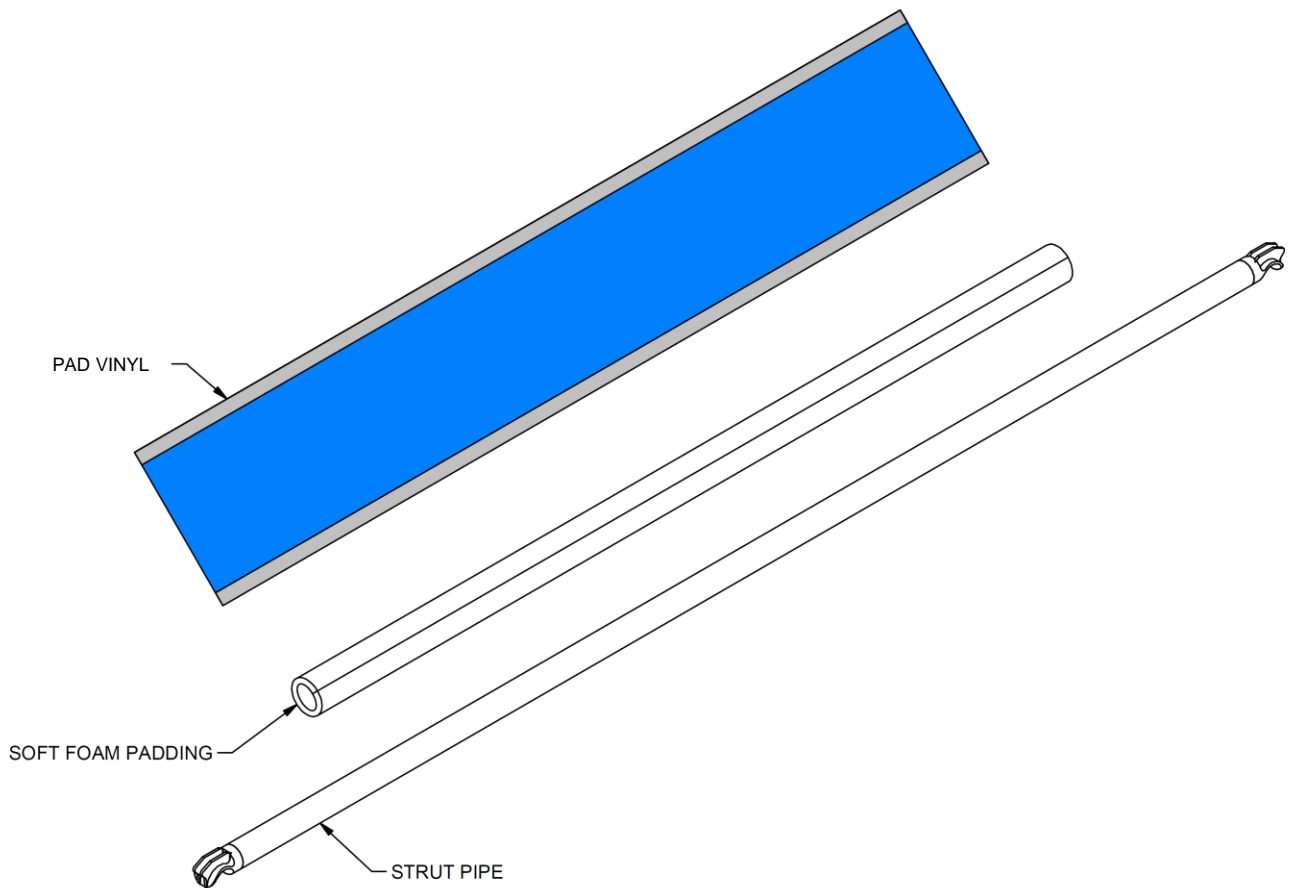
- Before installing the net and padding wipe frame clean with a clean rag or scrubbing pad.

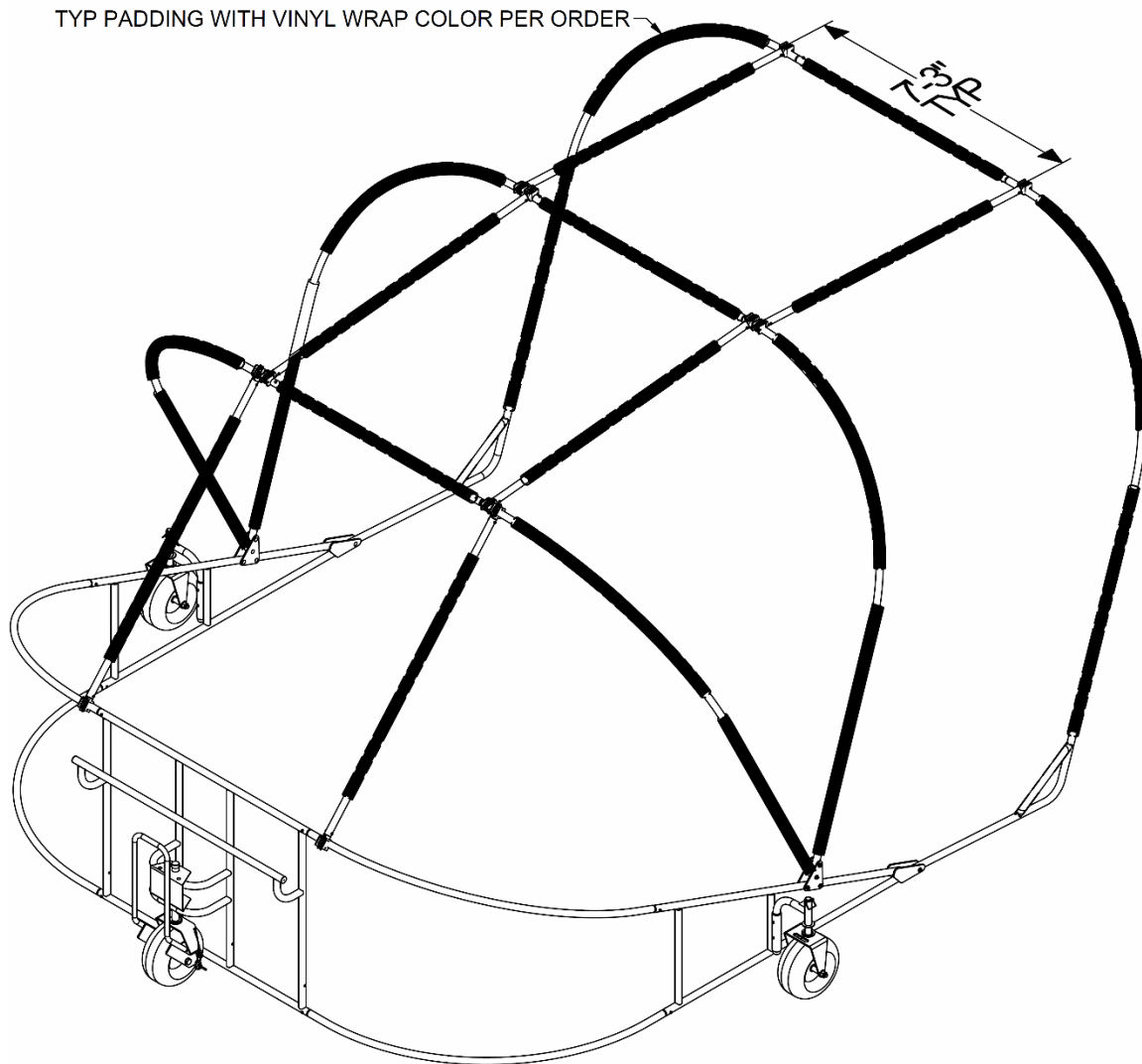
**LIST OF MATERIALS (Net and Padding)**

ITEM	QTY	PART #	DESCRIPTION
1	1	BLN-3	NET WITH BAFFLE
2	1	SKT-75	VINYL SKIRT
3	1	THUD-46	THUD PAD
4	1	CR0016	1/8" CORD (300 FT ROLL)
5	1	RP5012	ZIP TIES (BAG OF 100)
6	4	RP5066	ADJUSTABLE 6 FOOT STRAP
7	21	FM0028	SOFT FOAM PADDING (OPTIONAL)
8	4	FG5206	BLACK GAFFERS TAPE (OPTIONAL)
9	21	RPAD-UKITXX	PAD VINYL (OPTIONAL)

**Optional Ricochet Padding P/N: BGLC-75KF**

1. Attach the ricochet padding to the frame and strut members as shown, using black gaffer tape.
2. The pad material is slit along its length. Open the padding up and slide it over the pipe members. Cover each pad section with the velcro edged vinyl wrap.



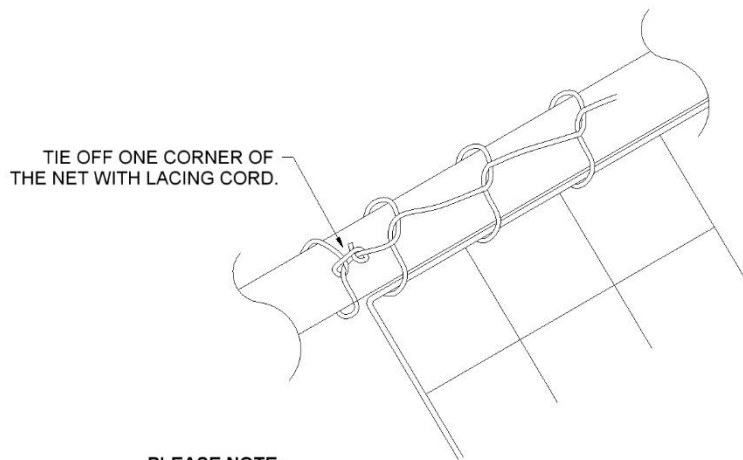


**Attach net:**

Description: The outer perimeter of the net is to be fully laced to both the front arch and the top member of the lower frame. (See detail showing how to lace if unfamiliar with lacing). The net will be suspended off the center two arches, by about 6”.

1. Cut a couple dozen 18” long cords from the roll of 1/8” black cord.
2. Remove the net and spread it out in front of the cage.
3. Locate the tags that call out the FRONT CORNERS, FRONT TOP and MIDDLE BACK.
4. With the frame in the folded position, take the section labeled FRONT TOP and position it in the center of the top center crossbar. Using one of the temporary cords tie off the net to the crossbar. Using additional cord pieces, tie off the leading edge of the net every couple of feet to either side of the center. Continue tying off the net, working towards the front.
5. When done, verify that the net is truly centered and the labels, LEFT FRONT CORNER and RIGHT FRONT CORNER (*when looking into the cage*), are in the proper corners. Note: If the labels are reversed it means the net is upside down and the baffle will end up on the wrong side (outside) of the cage – reverse the net if needed.
6. Shift the net, from side to side, as needed to center it.
7. Once the net is properly centered, go back to the TOP FRONT center point and lace the leading edge of net securely to the front arch. Starting from the center, lace to one side and then the other.

8. After the net is fully laced to the front arch – from the rear of the cage, carefully raise the front arch section using two struts.
9. Locate the next reinforced section of the net (about 8’ back from the front edge) and loosely tie it in place to the 2<sup>nd</sup> arch using the temporary positioning cords. Again, start at the middle and work to either side, tying off every couple of feet. The net should hang at least 6” away from the tubing to lessen any potential ricochet.
10. Raise the 2<sup>nd</sup> arch, using two strut and repeat step 9 for the third arch. When complete raise the third arch into position.
11. Starting at the center, tie off (every couple of feet) the net to the top member of the lower frame. Center the net, from side to side as needed, and then fully lace the back and bottom edge of the net to the top member of the lower frame.
12. Adjust the length and position of the cords on the 2<sup>nd</sup> and 3<sup>rd</sup> arches, so the net is properly positioned. Securely tie each cord. This can be done using a stepladder, with the frame in the raised position, or by lowering the frame and adjusting one section at a time.



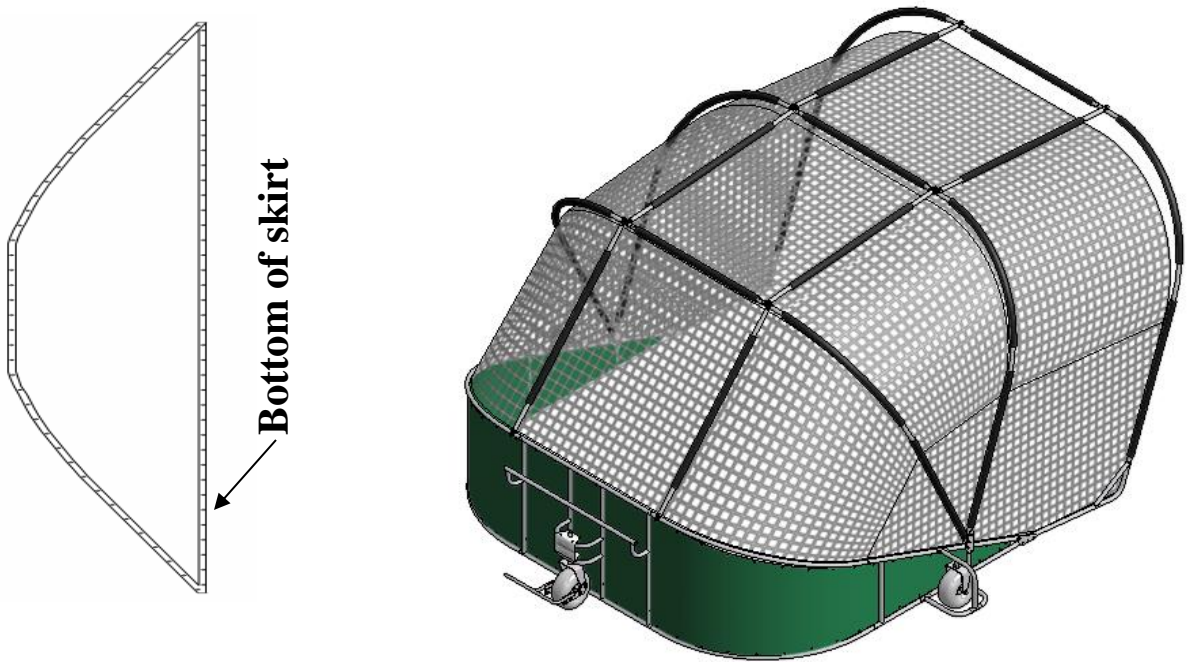
**PLEASE NOTE:**

- THE TYPE OF MATERIAL AND SIZE OF THE MESH WILL DETERMINE THE APPROPRIATE LACING DIMENSION.
- ALWAYS LACE CLOSE ENOUGH TO PREVENT THE PLAYING BALL FROM PASSING THROUGH ANY GAPS.
- USE HALF HITCH TYPE KNOTS ALONG THE LENGTH OF YOUR FRAME.
- DRAW EACH KNOT TIGHT BEFORE CONTINUING.



**Attach skirt:**

1. Fully raise the upper portion of the cage.
2. Attach the vinyl skirt to the top and bottom pipes of the lower frame, using the zip ties.
3. For best results, start at the center and work out to the front corners.



**Attach thud pad:**

1. With the cage in the open position, attach the thud pad to the upper member of the rear frame; using 18" lengths of the 1/8" cord.
2. Center the pad vertically.





## SET-UP AND TRANSPORT

### Raising and Lowering the Upper Cage:

*NOTE: At least two people are required for the following steps.*

**Caution:** Keep body parts clear of pinch points between pipes and fittings.

1. Two struts are required to raise and support each arch. The raising of each arch must be done in tandem, with equal pressure and extension.
2. Attach one end of two struts to top front frame horizontal pipe, secure in place with a quick release pin or locking claw. Space these apart so that one of the struts is attached at each end of the horizontal frame pipe.
3. Push up and forward on each of the struts attached in the previous step; front section of frame should be moving easily and without binding while raising struts.  
**Caution:** Watch for any binding of frame and/or netting while doing this, stop immediately if anything is caught on frame hardware. Take extreme care while doing these steps to prevent frame and/or net damage.
4. Place bottom end of struts onto next folding frame section, and secure in place with quick release pins or locking claw.
5. Take two more struts and place inboard of the previous two struts on the second frame folding section horizontal pipe. Secure using quick release pins or locking claw.
6. Push up and forward on each of the struts from the previous step; front and second sections of frame should be moving up and forward easily without binding while raising struts.
7. Repeat for the next frame section.
8. Attach the final two struts and move the entire upper frame into position. The entire front of cage may now begin to pull forward due to gravity at this point and will come to rest on the ground.

9. Place the bottom clamp onto top pipe of the lower frame, and secure in place with quick release pins or locking claw. Some effort may be required to seat these last two fittings in place, depending on net tension and the ground formation in your assembly working area.
10. To disassemble, or 'fold', unit – reverse above steps. Use caution when lowering the frame sections to avoid injury.

After each use inspect all fittings, hardware, pipes, and net for integrity and tightness. Any damage or loose hardware may result in unsatisfactory performance or failure, Contact factory or dealer for replacement parts.

## TRANSPORTING CAGE:

Cage can be transported by going forward or backward. Transporting the cage should be done with 2 or 3 people.

**Note: Cage should only be transported in the fully folded position. Never move cage when fully raised.**

1. To transport the cage fully lower the upper frame. Gather the net and baffle and secure it to the rear frame using the adjustable 6-foot strap (RP5066).
2. Lift the rear of the cage by lowering or raising the handle. With one operator steering and keeping the rear frame raised, two others are required to push against the cage in the two corners.

To transport the cage sideways, rotate side wheels by releasing the retaining pins and rotating the wheels 90 degrees. Reinsert retaining pins.

## MAINTENANCE INSTRUCTIONS

Conduct a thorough inspection of the cage annually looking for loose bolts and nuts. Due to normal vibration during play, fasteners may work themselves loose. Tighten adequately on a regular basis to prevent injury.

Apply a small amount of lithium grease to any moving parts, especially axles and wheels. If wheels have zirk fittings, you may inject grease into wheel bearings using a commercially available grease gun.

Inspect net and padding for wear; contact factory to arrange for replacements or servicing.

Paint retouching – any commercially available rust-preventive paint is acceptable for touching up chipped paint and areas of rust. Follow paint manufacturer's suggestions for proper application of paint & primer. (All steel parts provided are either galvanized and/or powder coated for extra protection but priming and painting should be adequate for proper maintenance of equipment after it leaves the factory.)

Storage: Unit can be stored outside, but if possible protected from the elements. Batting cage is designed with climatized and weather resistant materials but will age over time. Aging is accelerated if exposed to the weather, especially in Northern regions where freezing is expected during winter months. If possible, as part of seasonal storage, store indoors (net can be removed if desired to extend the life of this item; see catalog or call number listed above if replacement net is needed).

For replacement parts, information, or questions, please call Jaypro Sports at 1-800-243-0533 or find us online at [www.jaypro.com](http://www.jaypro.com)