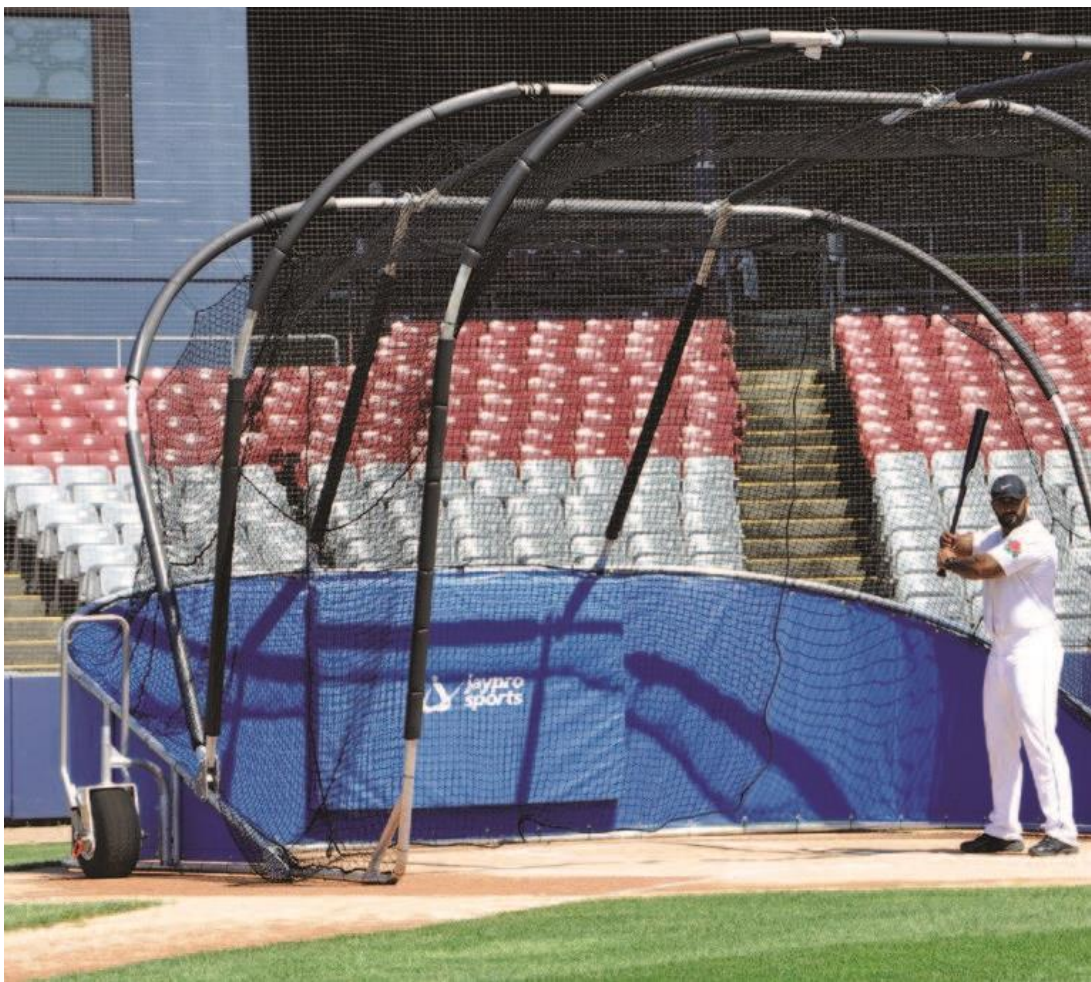




--- ALL STAR BATTING CAGE ---
BMR-1



Call Jaypro Sports Equipment at 1-800-243-0533 during regular business hours for technical support.

www.jaypro.com

IMPORTANT NOTICE:

1. BEFORE EACH USE CHECK EQUIPMENT FOR PROPER CONNECTING HARDWARE AND STRUCTURAL INTEGRITY. REPLACE DAMAGED OR MISSING HARDWARE IMMEDIATELY.
2. SECURELY TIGHTEN ALL NUTS AND BOLTS.
3. **NEVER** ALLOW ANYONE TO RIDE ON BATTING CAGE DURING TRANSPORT.
4. USE OF THIS EQUIPMENT OTHER THAN INTENDED, MAY BE HAZARDOUS.
5. ALTERATION OR MODIFICATION OF THIS EQUIPMENT MAY BE HAZARDOUS AND RESULT IN INJURY. FOR REPAIR OR REPLACEMENT, CONTACT YOUR DEALER OR JAYPRO SPORTS.

LIST OF RECOMMENDED TOOLS & SUPPLIES

ITEM	DESCRIPTION
1	POWER DRILL WITH 3/16" OR 9/64" DRILL BIT & PHILLIPS BIT
2	BOX WRENCHES, ADJUSTABLE WRENCHES, OR SOCKET SET
3	3/16" & 7/32" ALLEN WRENCH
4	RUBBER MALLET
5	LITHIUM GREASE
6	TAPERED DRIVE ROD (SUPPLIED)
7	8 FT OR 10 FT STEP LADDER
8	RAGS, GREEN SCRUBBING PADS, CLEANING SOLUTION

ALL STAR BATTING CAGE, BMR-1
MASTER PARTS LIST (NO KITS)

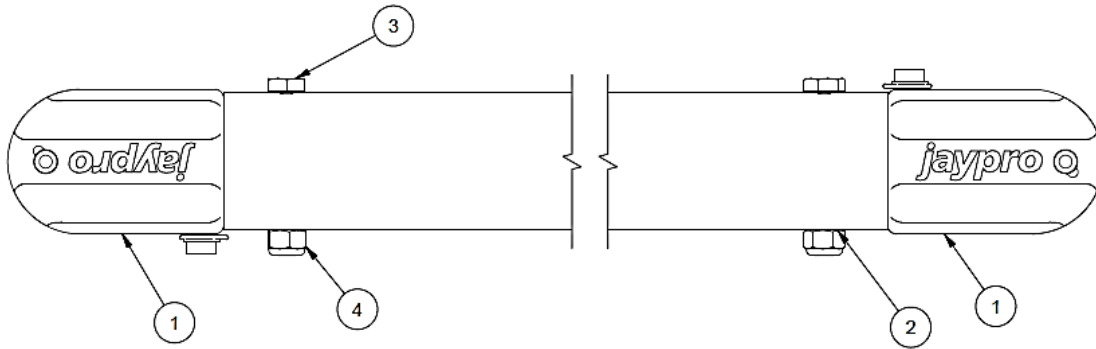
1	10	BGLC-1	CURVED FRAME PIPE, SWAGED 2X
2	3	BGLC-2	UPPER FRAME HORIZONTAL PIPE x 78" L
3	4	BGLC-3	UPPER FRAME HINGE PIPE x 64" L
4	2	BGLC-5	9/16" x 31" SHAFT STAND
5	1	BGLC-NGA	RIGHT SIDE WELDED SECTION
6	1	BGLC-NGB	LEFT SIDE WELDED SECTION
7	1	BGLC-B	BGLC-7500 REAR FRAME WELDMENT
8	2	BGLC-C	BGLC FRONT FRAME SECTION
9	6	BBLS123	STRUT ASSY LITTLE SLAM
10	3	NGW-C	SIDE WHEEL FRAME WELDMENT
11	1	BGLC-K	REAR WHEEL RECEIVER
12	3	BGLC-LX	HANDLE
13	2	BGLC-N	COACH STAND WELDMENT
14	1	BGLC-P	REAR WHEEL JACK BRACKET
15	4	AR5299	SIDE FRAME HINGE PLATES
16	3	RW5012	18"/8.75" x 8" PNEUMATIC TIRE
17	36	HW5038	1" WASHER, ZP
18	6	HM6340	3/4" x 3/8" SLEEVE BEARING, BRONZE
19	6	HB5072	3/4"-10 x 2" CARRIAGE BOLT, ZP
20	6	HN5065	3/4"-10 UNC-Nylon Lock Nut-ZP-GrNC
21	N/A	N/A	N/A
22	4	HM6344	1/8" OD x 1 1/2" COTTER
23	12	HW343	3/4 SAE WASHER-ZP-GrNC
24	4	HB5038	3/8-16 x 2 1/2 CARRIAGE BOLT GRD 5
25	7	HN265	3/8-16 UNC-Nylon Lock Nut-ZP-GrNC
26	4	HW5037	9/16" FLAT WASHER, ZP
27	7	HW2047	3/8 SAE WASHER-ZP-GrNC
28	22	HW2044	1/2 SAE WASHER-ZP-GrNC
29	1	RP473	1 1/2" END CAP
30	10	HB5051	1/2"-13 x 3 1/2" CARRIAGE BOLT, ZP
31	10	HN268	1/2-13 UNC-Thin Nylon Lock Nut-ZP-GrNC
32	50	HN261	5/16-18 UNC-Nylon Lock Nut-ZP-GrNC
33	14	HS5015	5/16-18 x 2-1/4 HEX CAP SCREW-ZP-GrNC
34	6	EP0019	PLASTIC END PLUG 77-8
35	6	EP0009	1-1/4" END CAP
36	4	PLANK-A	9 1/2" x 1 1/2" x 24" PLANK
37	16	AR5044	5/16" BOLT CLIP
38	16	HB5030	5/16-18 x 3 CARRIAGE BOLT ZP
39	8	AR5045A	9 1/2" ALUMINUM SEAT PLANK END CAP
40	16	HS5035	#8 x 1/2" PAN HEAD PHILIP SCREW SELF DRILL, ZP
41	3	HS286	3/8-16 x 1 HEX CAP SCREW-ZP-GrNC
42	3	HS5356	1"-8 x 12" HEX HEAD CAP SCREW Zinc Plated
43	3	90566A253	1"-8 THIN NYLON LOCK NUT
44	3	HM6345	3/8" QUICK RELEASE PIN 1" LONG
45	3	RP5041	NYLON LANYARD 10" NL93-10-226
46	3	HS4096	1/4-20 x 3/4 HEX CAP SCREW-ZP-GrNC
47	3	HN5073	1/4-20 UNC-Thin Nylon Lock Nut-ZP-GrNC
48	20	HS5024	5/16-18 x 2-3/4 HEX CAP SCREW-ZP-GrNC
49	2	RR5035	48" BUNGIE CORDS W/ HOOKS STL CORE
50	4	AR-RT-03A	CLAMP RIGHT
51	4	AR-RT-03B	CLAMP LEFT
52	8	AR-RT-01A	STANDARD PIPE CLAMP
53	2	HM233	5/16 x 2 3/4 WIRE LOCK PIN ZP
54	2	NGW-A	WHEEL SWIVEL ARM
55	6	NGW-S1	WHEEL TUBE SPACER

ASSEMBLY INSTRUCTIONS

- Unpack all parts and check against parts list to ensure that all have been included.
- Inspect all parts for damage. Report any damages to the trucking company.
- Select a large clear flat area to assemble the cage.

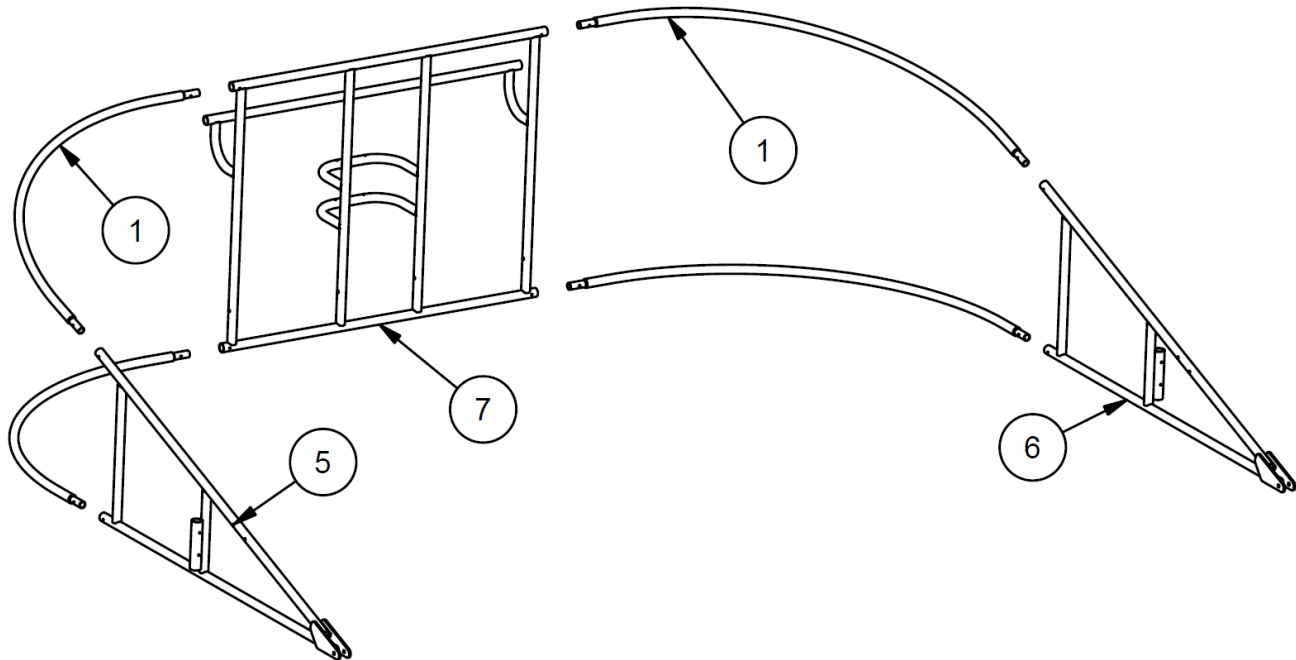
Assemble struts: (BBLs123)

ITEM	QTY	PART #	DESCRIPTION
1	2	AF5016A	1.90" CAST STRUT CLAMP
2	1	BBLs123-1	BOLT-ON LITTLE SLAM STRUT
3	2	HS5015	5/16-18 x 2-1/4 HEX CAP SCREW-ZP-GrNC
4	2	HN261	5/16-18 UNC-Nylon Lock Nut-ZP-GrNC



Assemble lower frame: (Attach wheel frames)

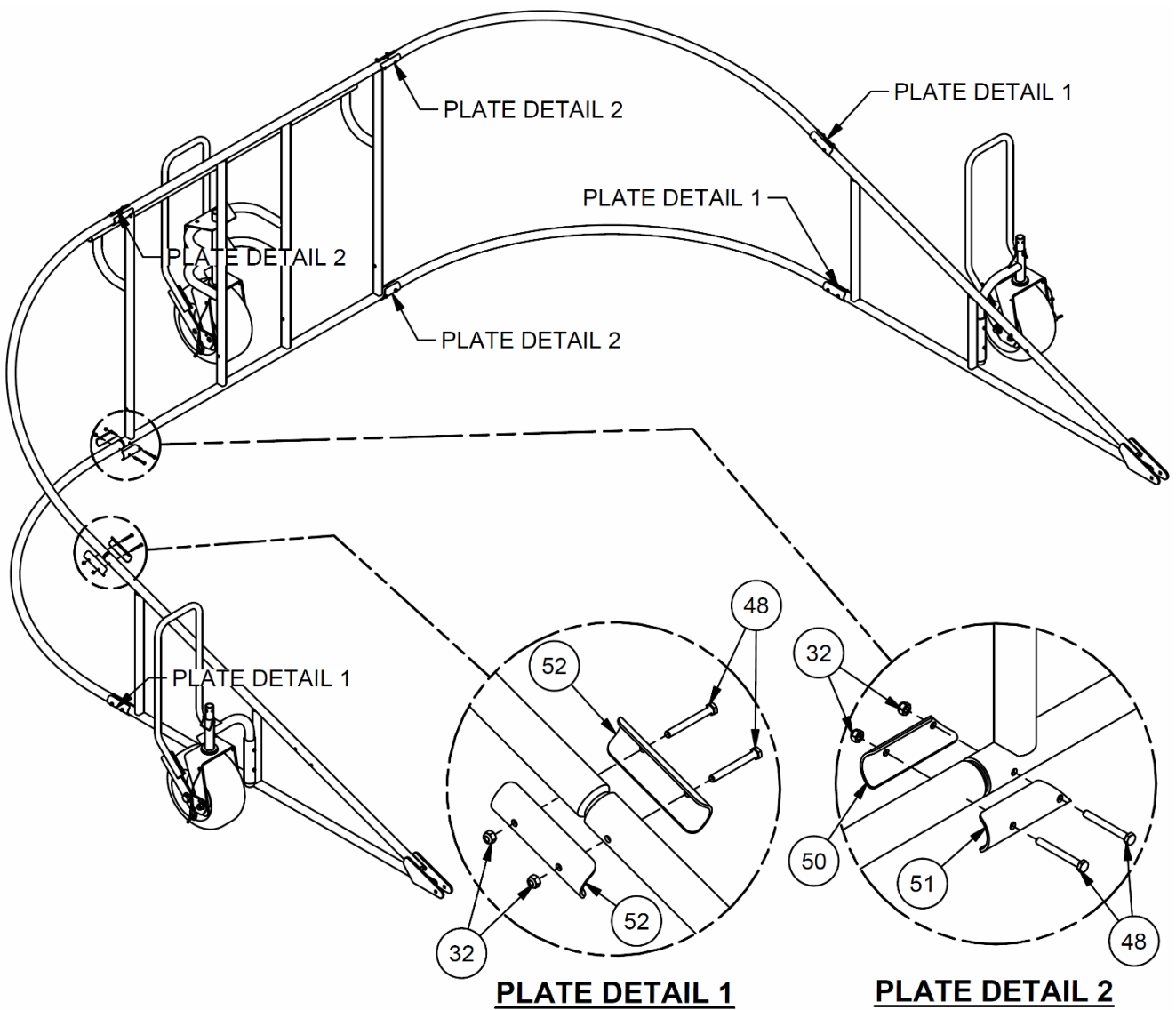
ITEM	QTY	PART #	DESCRIPTION
1	10	BGLC-1	CURVED FRAME PIPE, SWAGED 2X
5	1	BGLC-NGA	RIGHT SIDE WELDED SECTION
6	1	BGLC-NGB	LEFT SIDE WELDED SECTION
7	1	BGLC-B	BGLC-7500 REAR FRAME WELDMENT



Install reinforcing clamps: (Note: Used tapered drive rod (supplied) to help align holes)

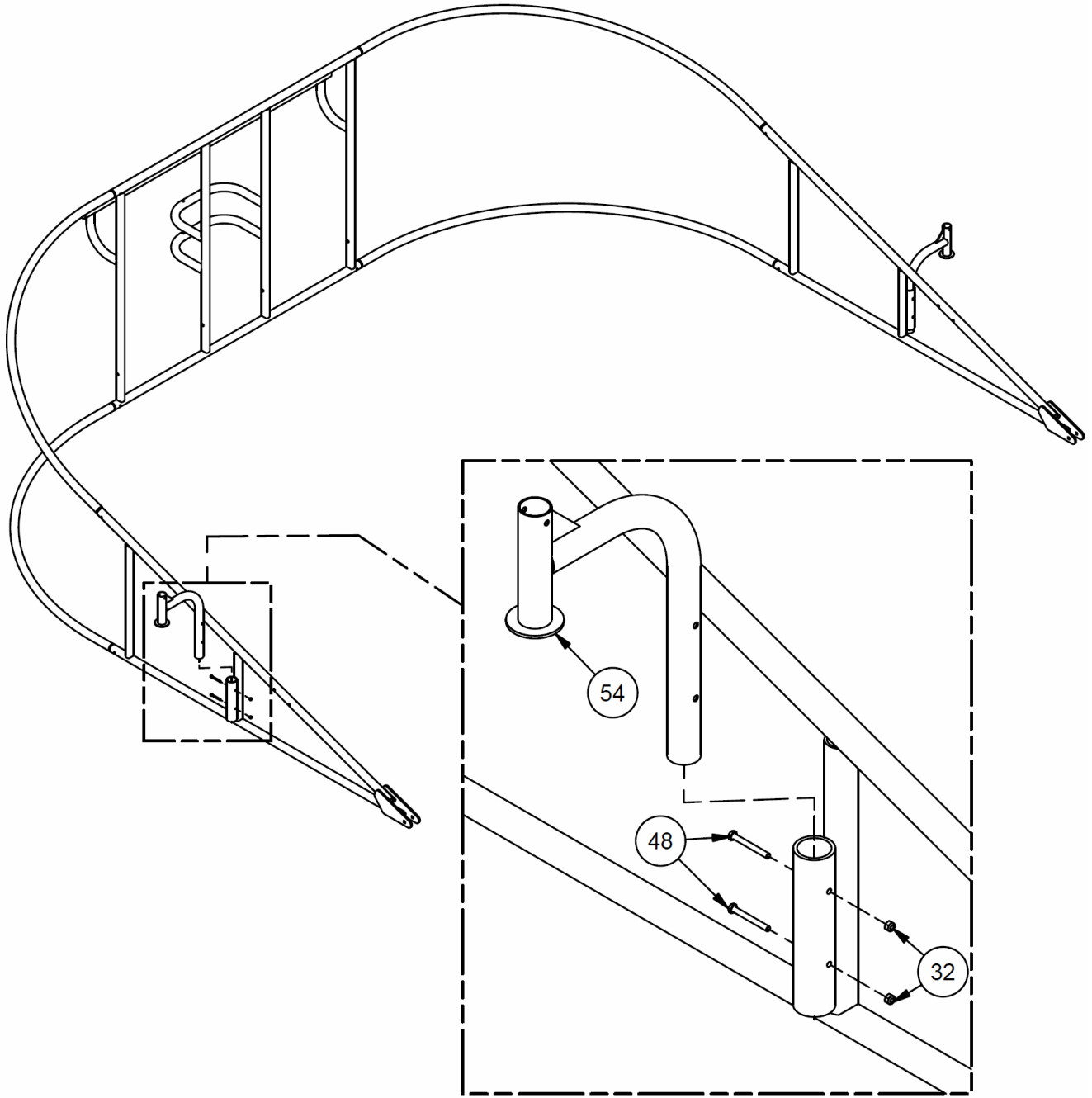
1) Drill hole for 5/16" bolt, use clamps as a template.

ITEM	QTY	PART #	DESCRIPTION
32	50	HN261	5/16-18 UNC-Nylon Lock Nut-ZP-GrNC
48	20	HS5024	5/16-18 x 2-3/4 HEX CAP SCREW-ZP-GrNC
50	4	AR-RT-03A	CLAMP RIGHT
51	4	AR-RT-03B	CLAMP LEFT
52	8	AR-RT-01A	STANDARD PIPE CLAMP

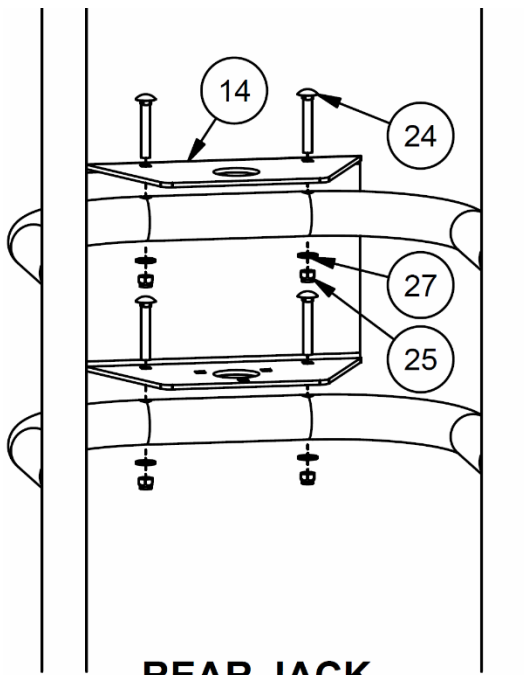
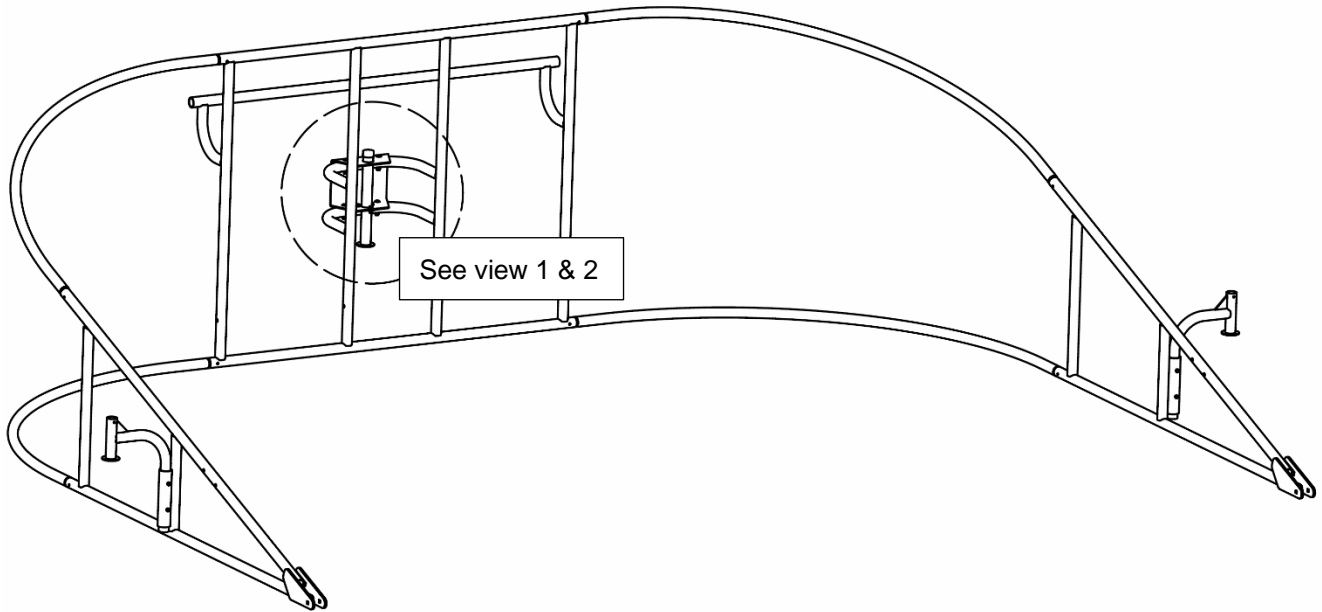


Install side wheel swivel arms:

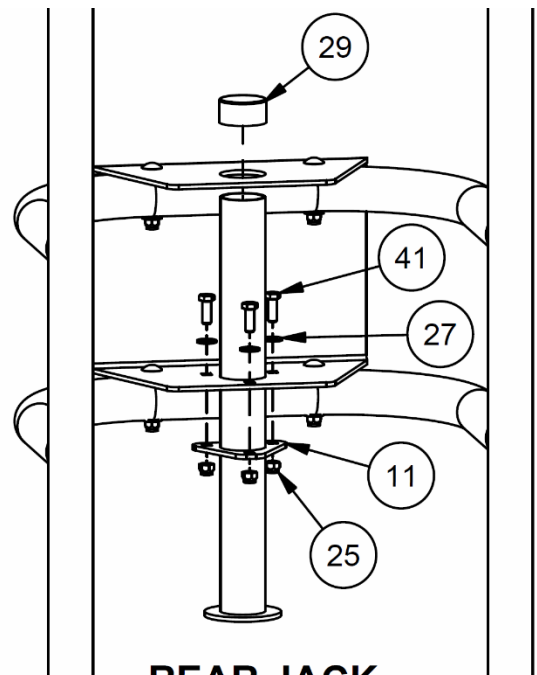
ITEM	QTY	PART #	DESCRIPTION
32	50	HN261	5/16-18 UNC-Nylon Lock Nut-ZP-GrNC
48	20	HS5024	5/16-18 x 2-3/4 HEX CAP SCREW-ZP-GrNC
54	2	NGW-A	WHEEL SWIVEL ARM



ITEM	QTY	PART #	DESCRIPTION
11	1	BGLC-K	REAR WHEEL RECEIVER
14	1	BGLC-P	REAR WHEEL JACK BRACKET
24	4	HB5038	3/8-16 x 2 1/2 CARRIAGE BOLT GRD 5
25	7	HN265	3/8-16 UNC-Nylon Lock Nut-ZP-GrNC
27	7	HW2047	3/8 SAE WASHER-ZP-GrNC
29	1	RP473	1 1/2" END CAP
41	3	HS286	3/8-16 x 1 HEX CAP SCREW-ZP-GrNC

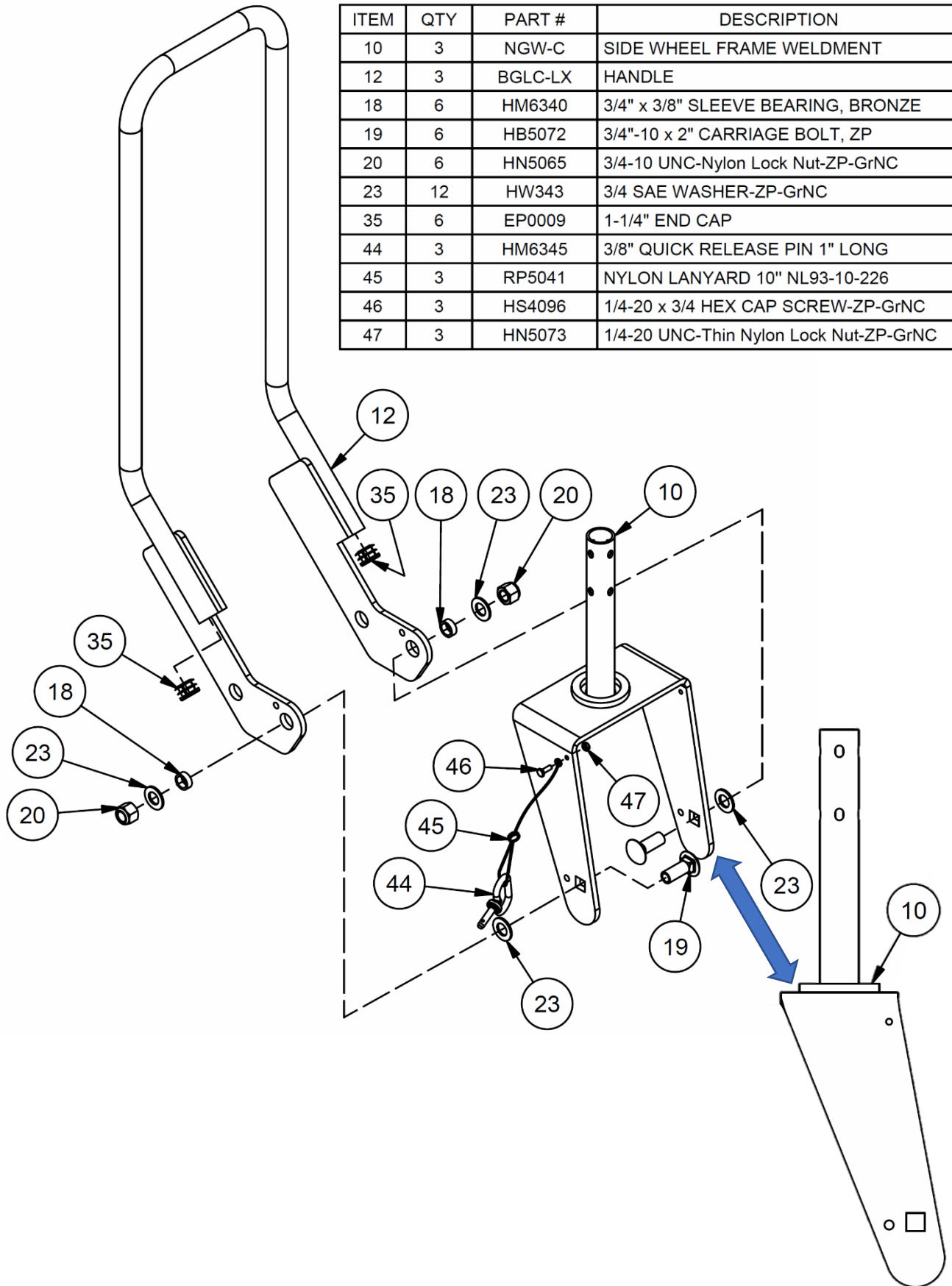


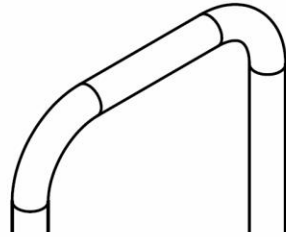
REAR JACK
VIEW 1



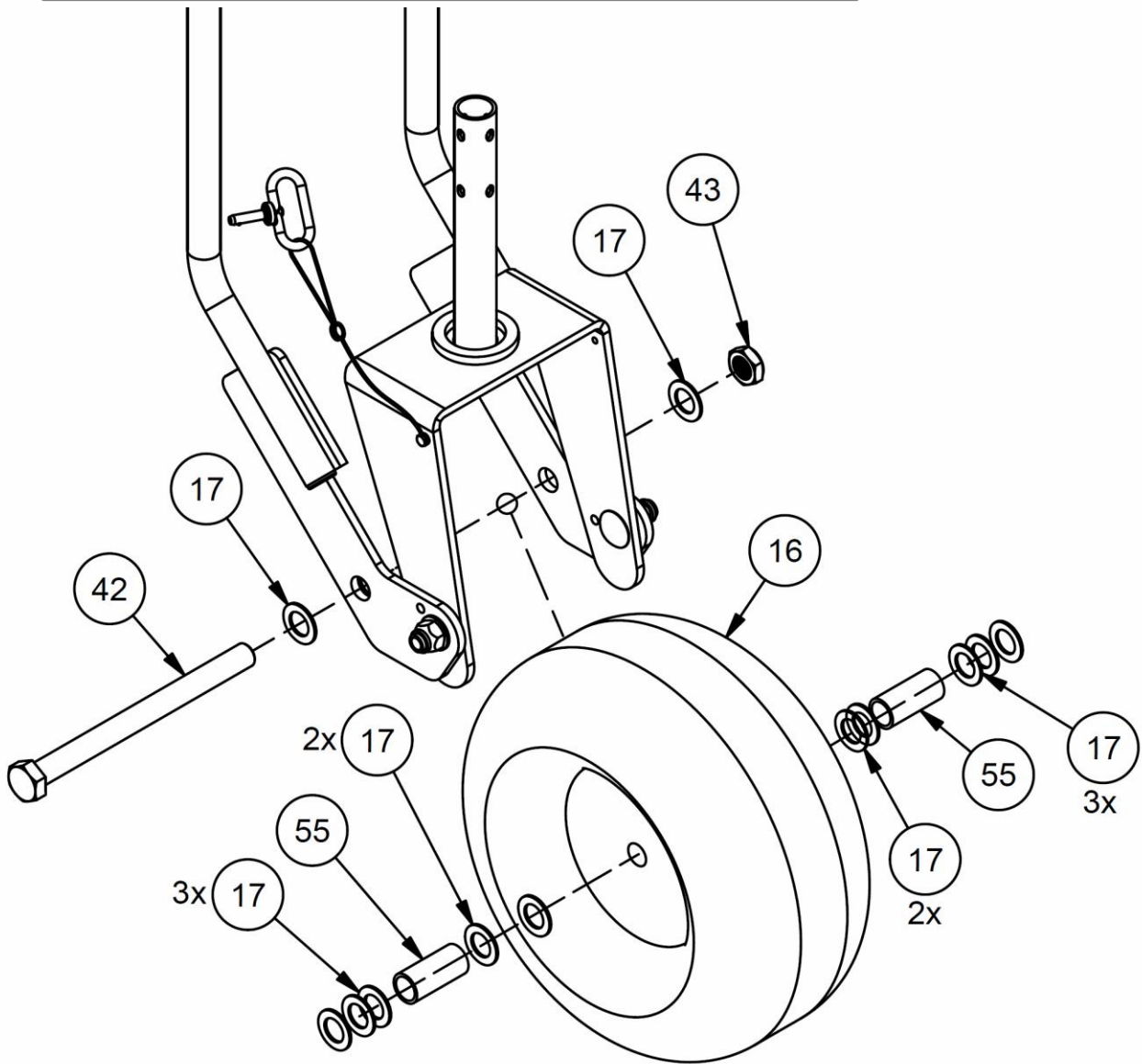
REAR JACK
VIEW 2

ITEM	QTY	PART #	DESCRIPTION
10	3	NGW-C	SIDE WHEEL FRAME WELDMENT
12	3	BGLC-LX	HANDLE
18	6	HM6340	3/4" x 3/8" SLEEVE BEARING, BRONZE
19	6	HB5072	3/4"-10 x 2" CARRIAGE BOLT, ZP
20	6	HN5065	3/4-10 UNC-Nylon Lock Nut-ZP-GrNC
23	12	HW343	3/4 SAE WASHER-ZP-GrNC
35	6	EP0009	1-1/4" END CAP
44	3	HM6345	3/8" QUICK RELEASE PIN 1" LONG
45	3	RP5041	NYLON LANYARD 10" NL93-10-226
46	3	HS4096	1/4-20 x 3/4 HEX CAP SCREW-ZP-GrNC
47	3	HN5073	1/4-20 UNC-Thin Nylon Lock Nut-ZP-GrNC





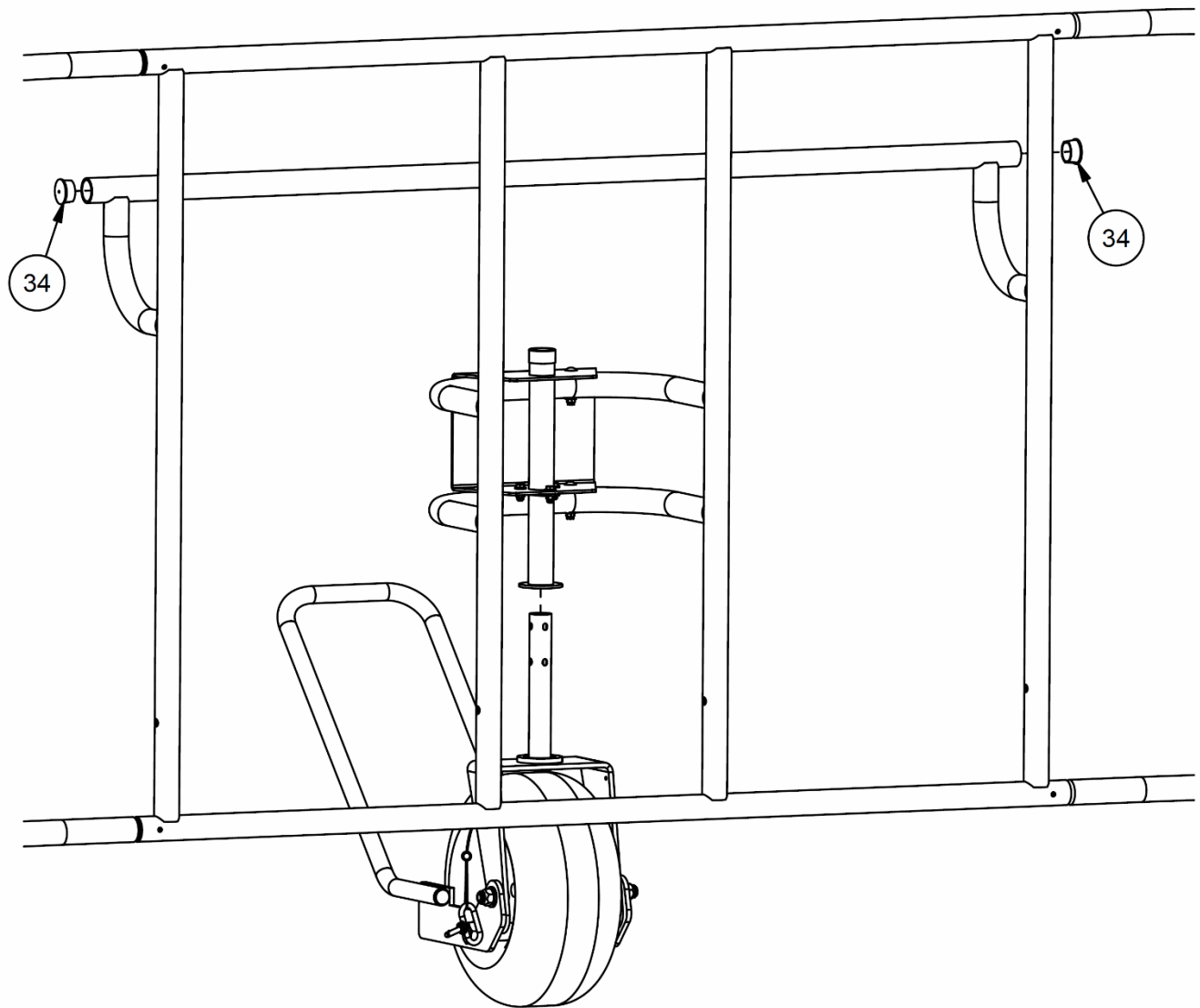
ITEM	QTY	PART #	DESCRIPTION
16	3	RW5012	18"/8.75" x 8" PNEUMATIC TIRE
17	36	HW5038	1" WASHER, ZP
42	3	HS5356	1"-8 x 12" HEX HEAD CAP SCREW Zinc Plated
43	3	90566A253	1"-8 THIN NYLON LOCK NUT
55	6	NGW-S1	WHEEL TUBE SPACER



Install side wheels:

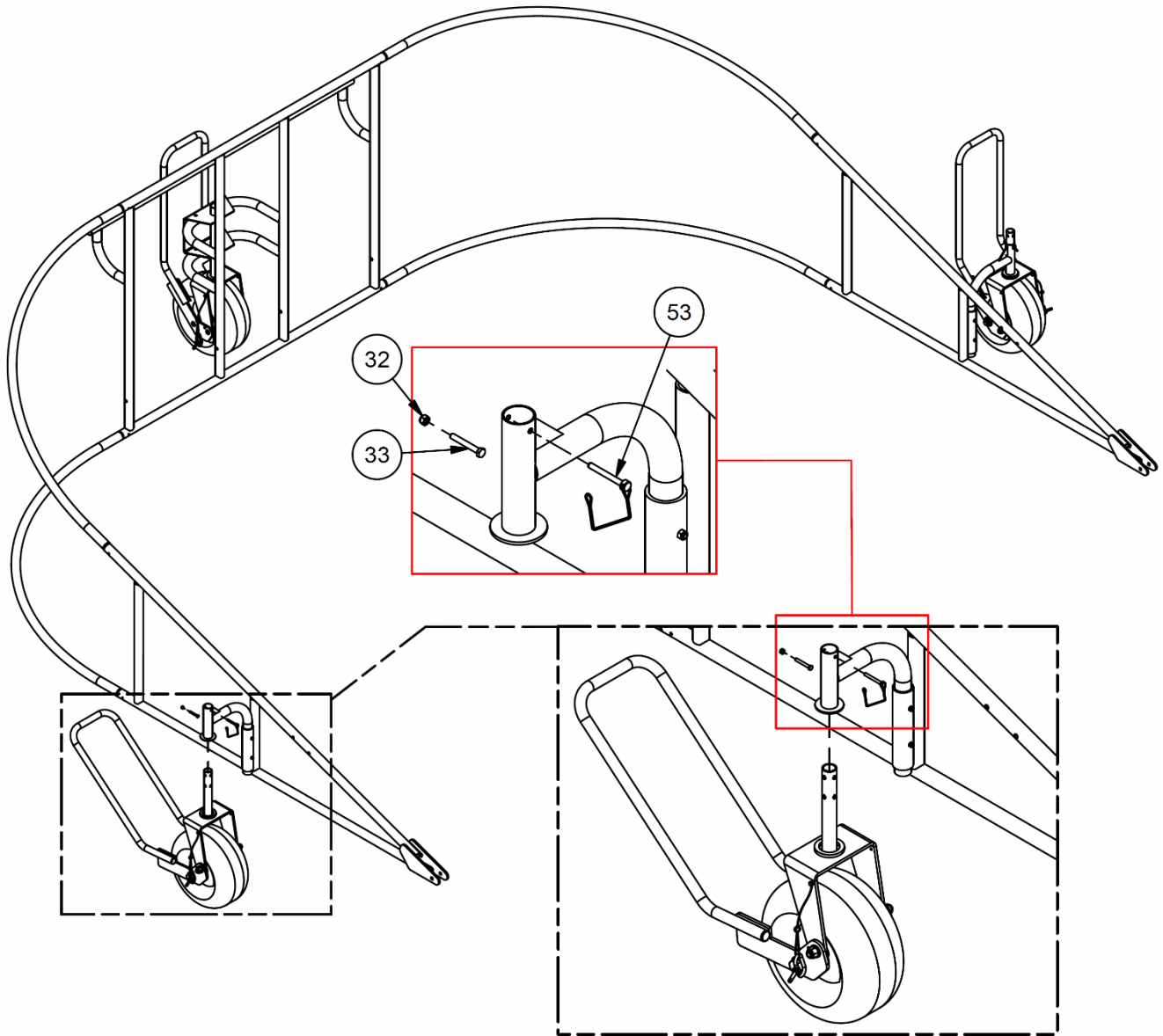
- 1) Apply a light amount of lithium grease to the length of the rear wheel stem.
- 2) Lift the rear frame and slide the rear wheel stem into the receiver.

ITEM	QTY	PART #	DESCRIPTION
34	6	EP0019	PLASTIC END PLUG 77-8

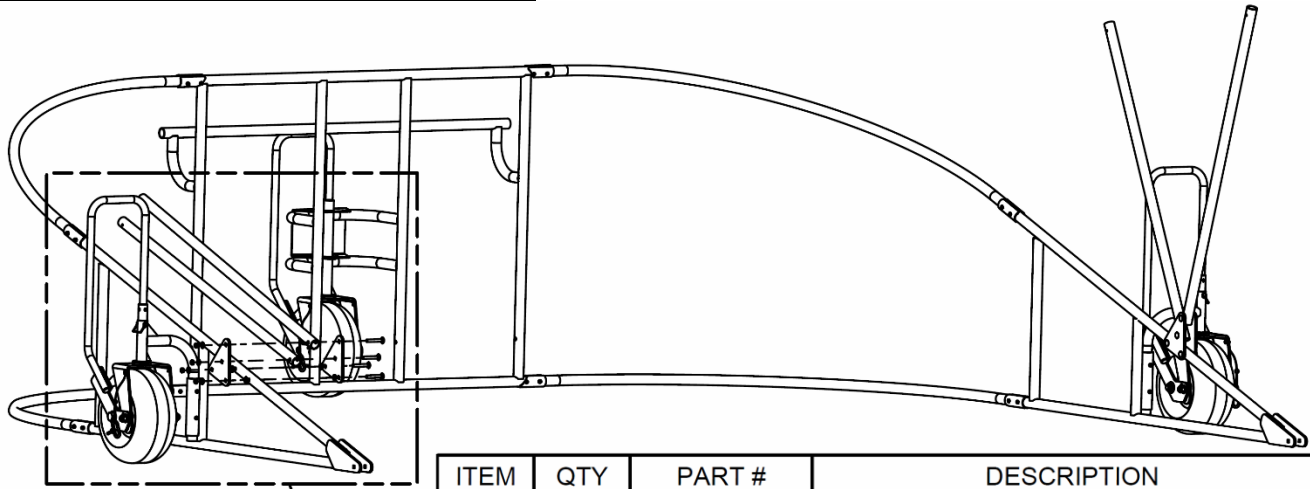


ITEM	QTY	PART #	DESCRIPTION
32	50	HN261	5/16-18 UNC-Nylon Lock Nut-ZP-GrNC
33	14	HS5015	5/16-18 x 2-1/4 HEX CAP SCREW-ZP-GrNC
53	2	HM233	5/16 x 2 3/4 WIRE LOCK PIN ZP

Note: Use optional screw for permanent assembly. Pin is for quick disconnect.

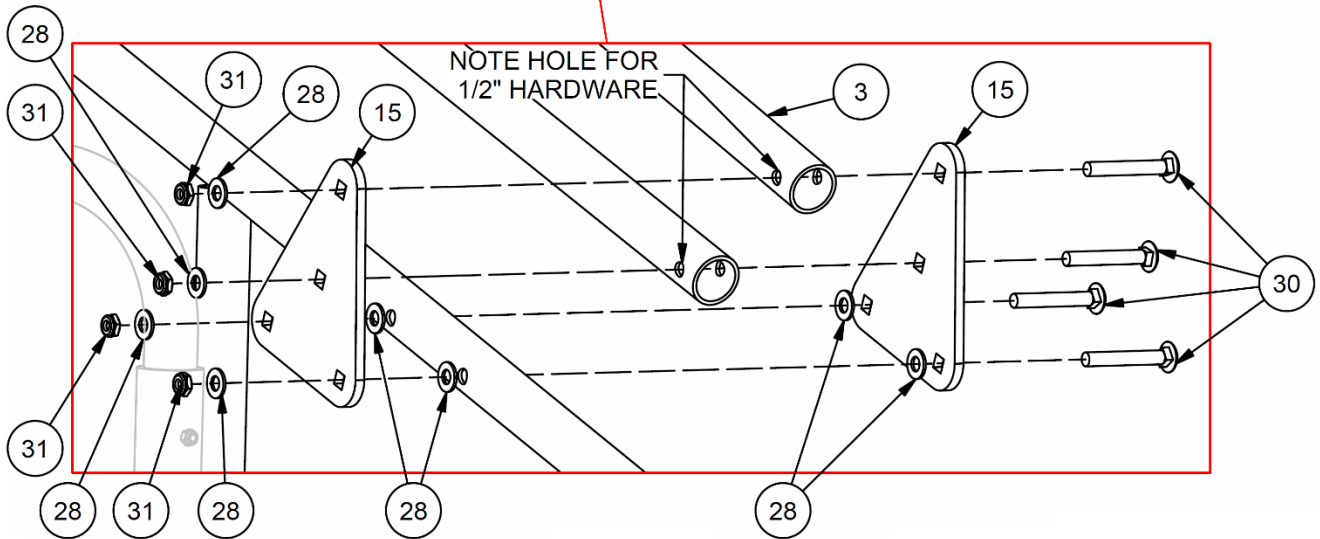
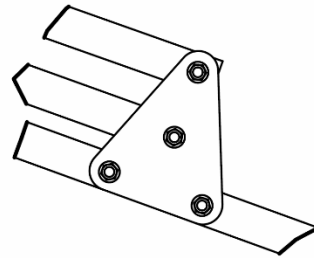
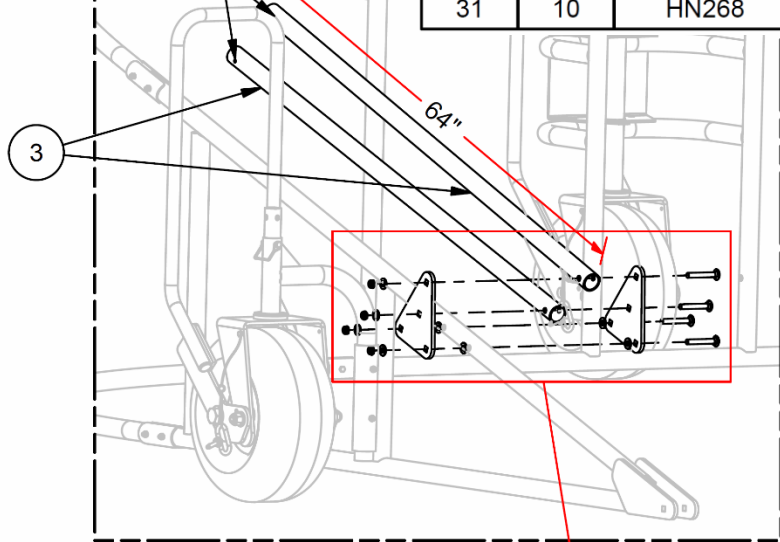


Install upper frame mounting brackets:



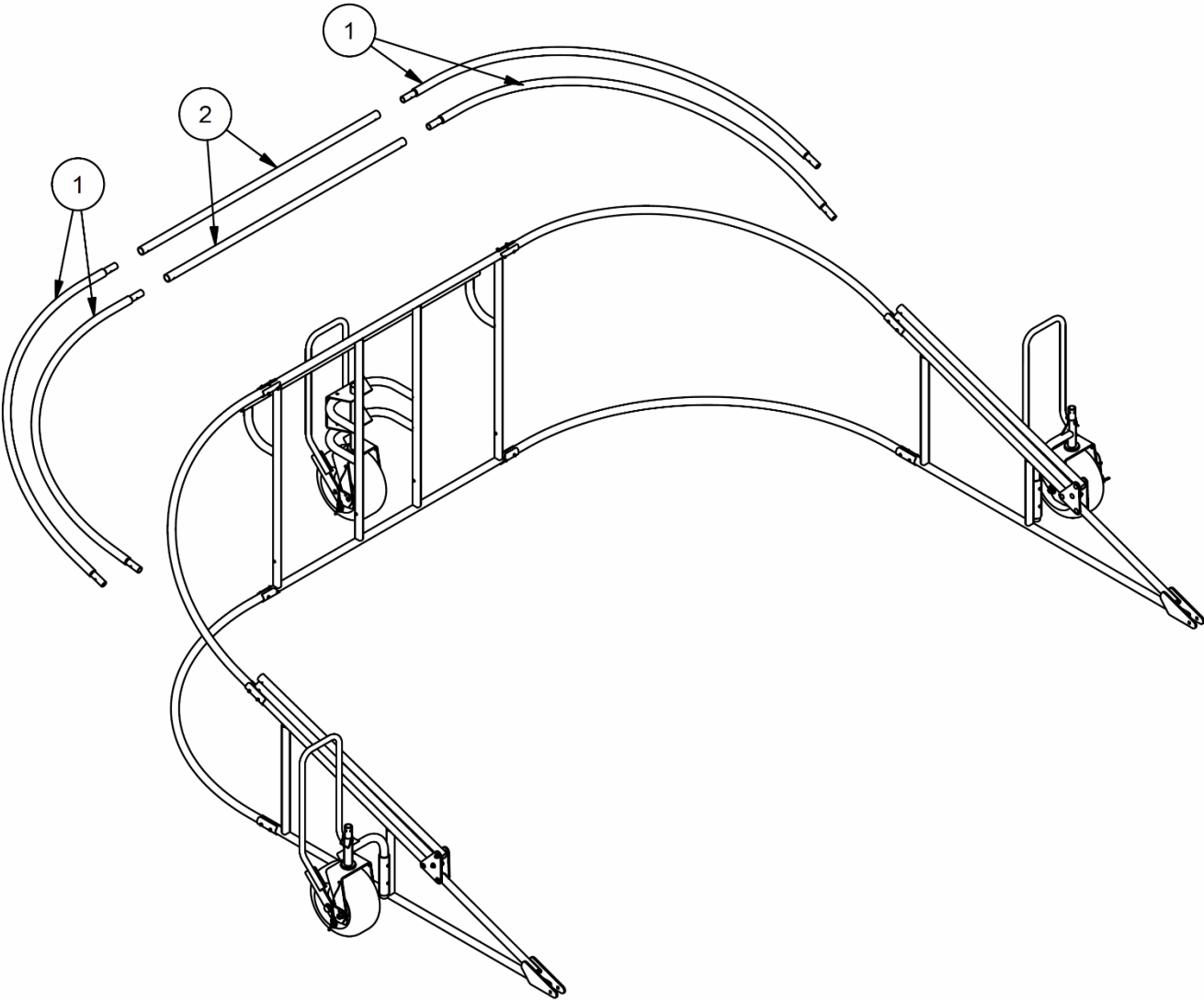
ITEM	QTY	PART #	DESCRIPTION
3	4	BGLC-3	UPPER FRAME HINGE PIPE x 64" L
15	4	AR5299	SIDE FRAME HINGE PLATES
28	22	HW2044	1/2 SAE WASHER-ZP-GrNC
30	10	HB5051	1/2"-13 x 3 1/2" CARRIAGE BOLT, ZP
31	10	HN268	1/2-13 UNC-Thin Nylon Lock Nut-ZP-GrNC

NOTE HOLE FOR 5/16" HARDWARE

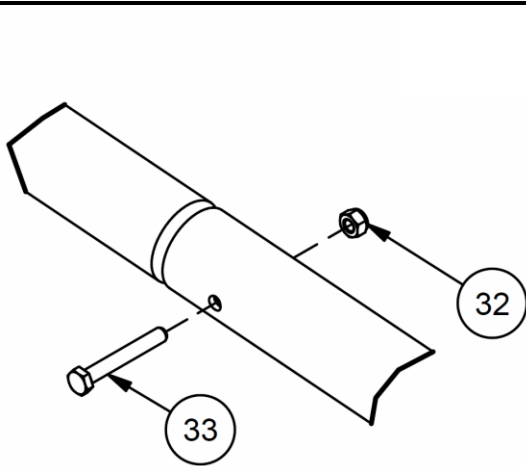
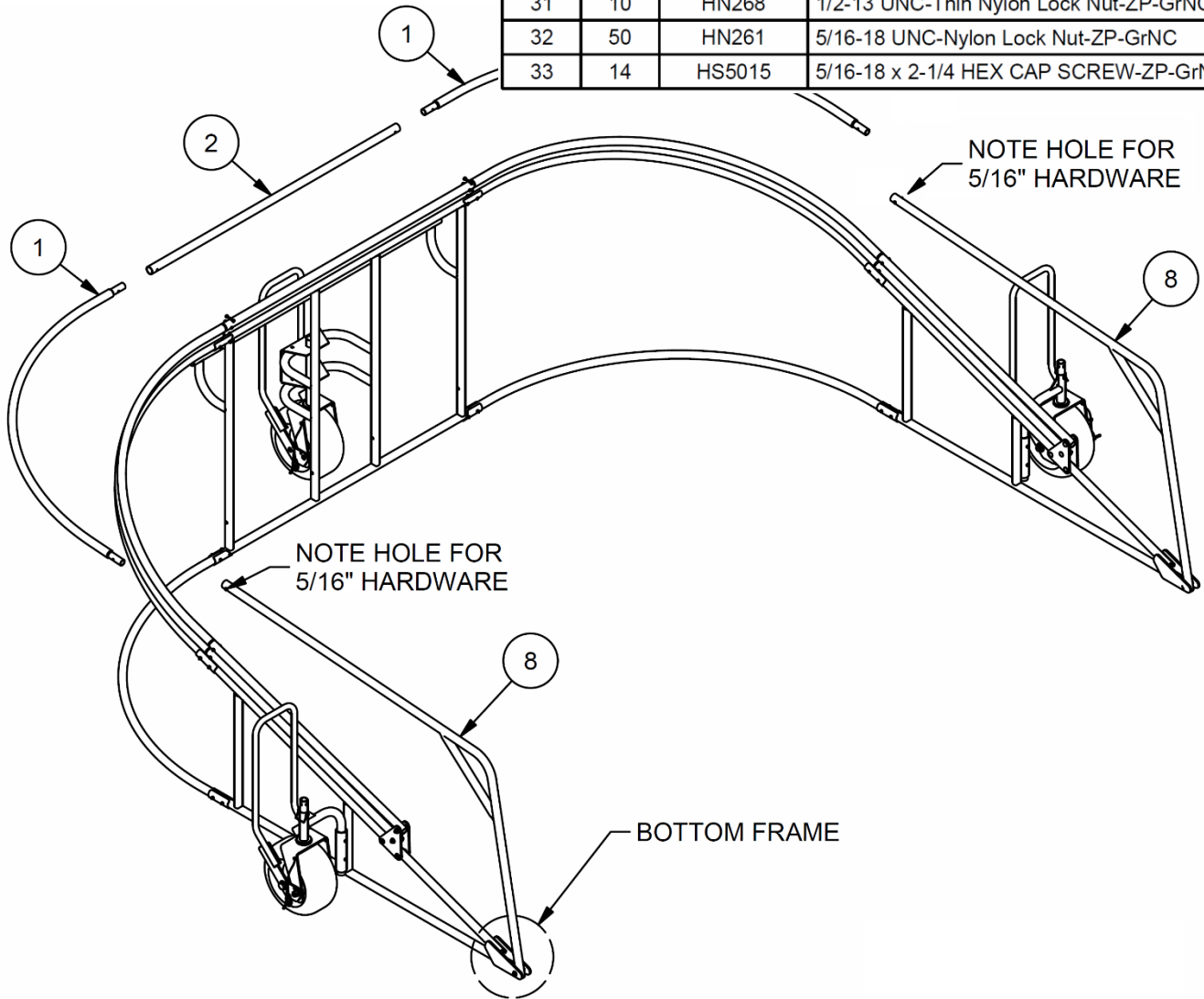


Install upper frame: (One at a time)

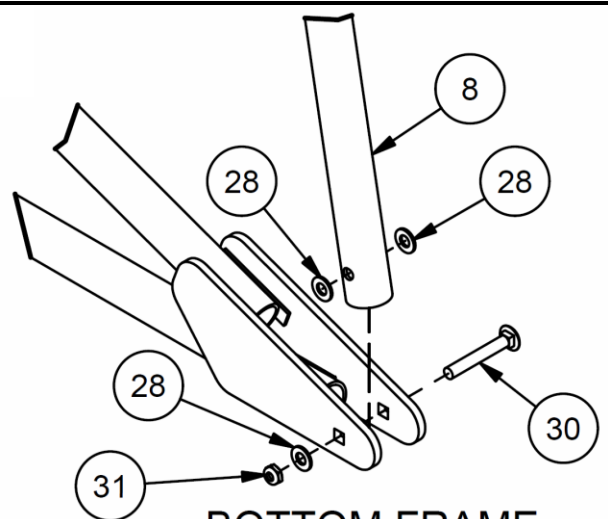
ITEM	QTY	PART #	DESCRIPTION
1	10	BGLC-1	CURVED FRAME PIPE, SWAGED 2X
2	3	BGLC-2	UPPER FRAME HORIZONTAL PIPE x 78" L



ITEM	QTY	PART #	DESCRIPTION
1	10	BGLC-1	CURVED FRAME PIPE, SWAGED 2X
2	3	BGLC-2	UPPER FRAME HORIZONTAL PIPE x 78" L
8	2	BGLC-C	BGLC FRONT FRAME SECTION
28	22	HW2044	1/2 SAE WASHER-ZP-GrNC
30	10	HB5051	1/2"-13 x 3 1/2" CARRIAGE BOLT, ZP
31	10	HN268	1/2-13 UNC-Thin Nylon Lock Nut-ZP-GrNC
32	50	HN261	5/16-18 UNC-Nylon Lock Nut-ZP-GrNC
33	14	HS5015	5/16-18 x 2-1/4 HEX CAP SCREW-ZP-GrNC

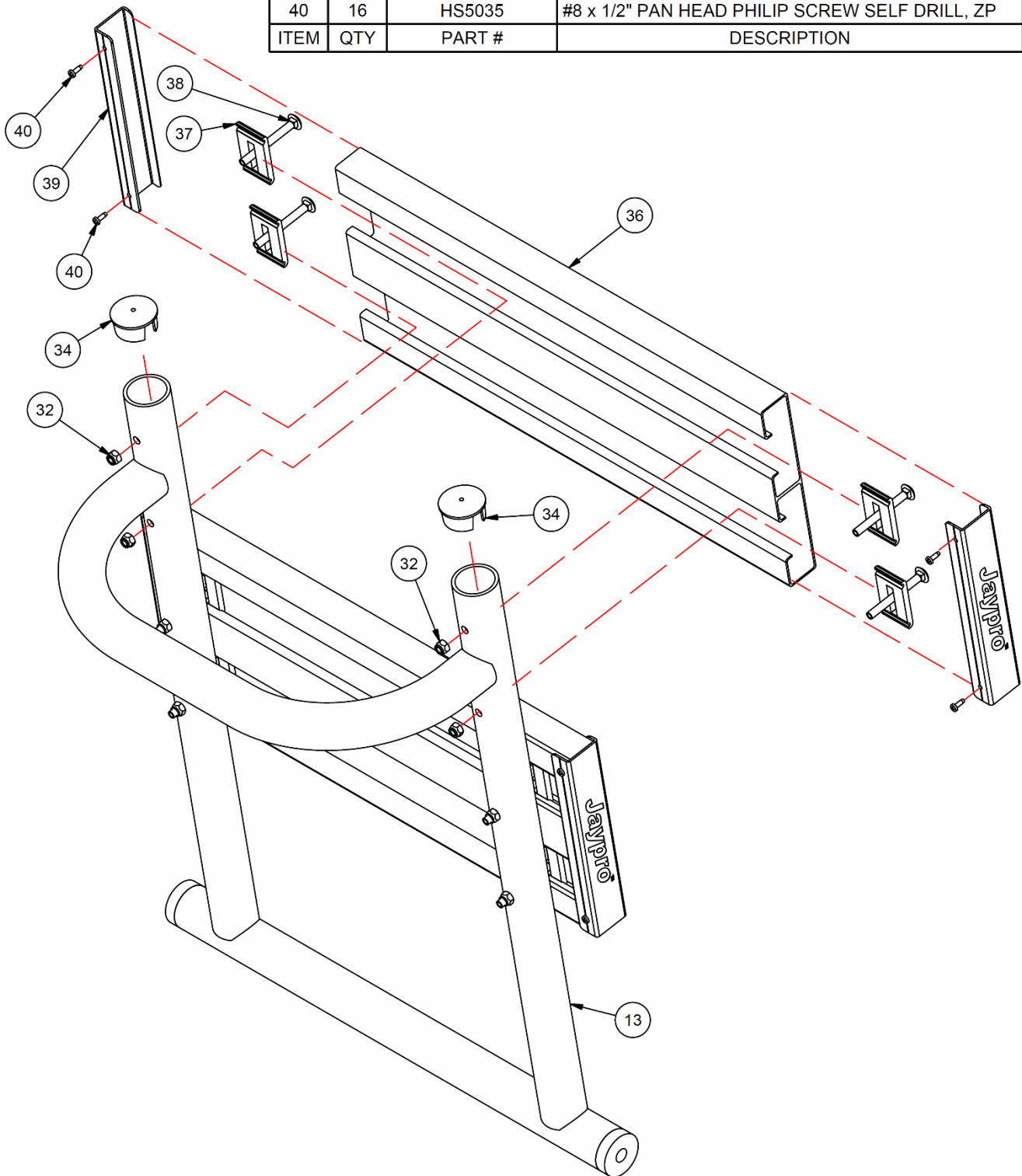


SWAGE FRAME

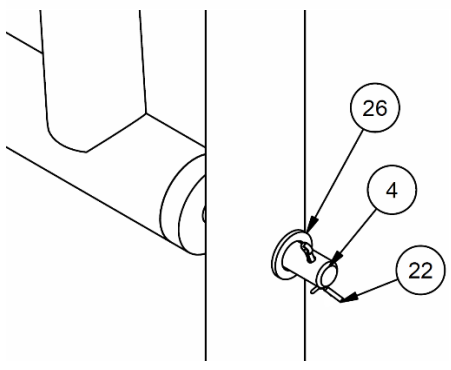
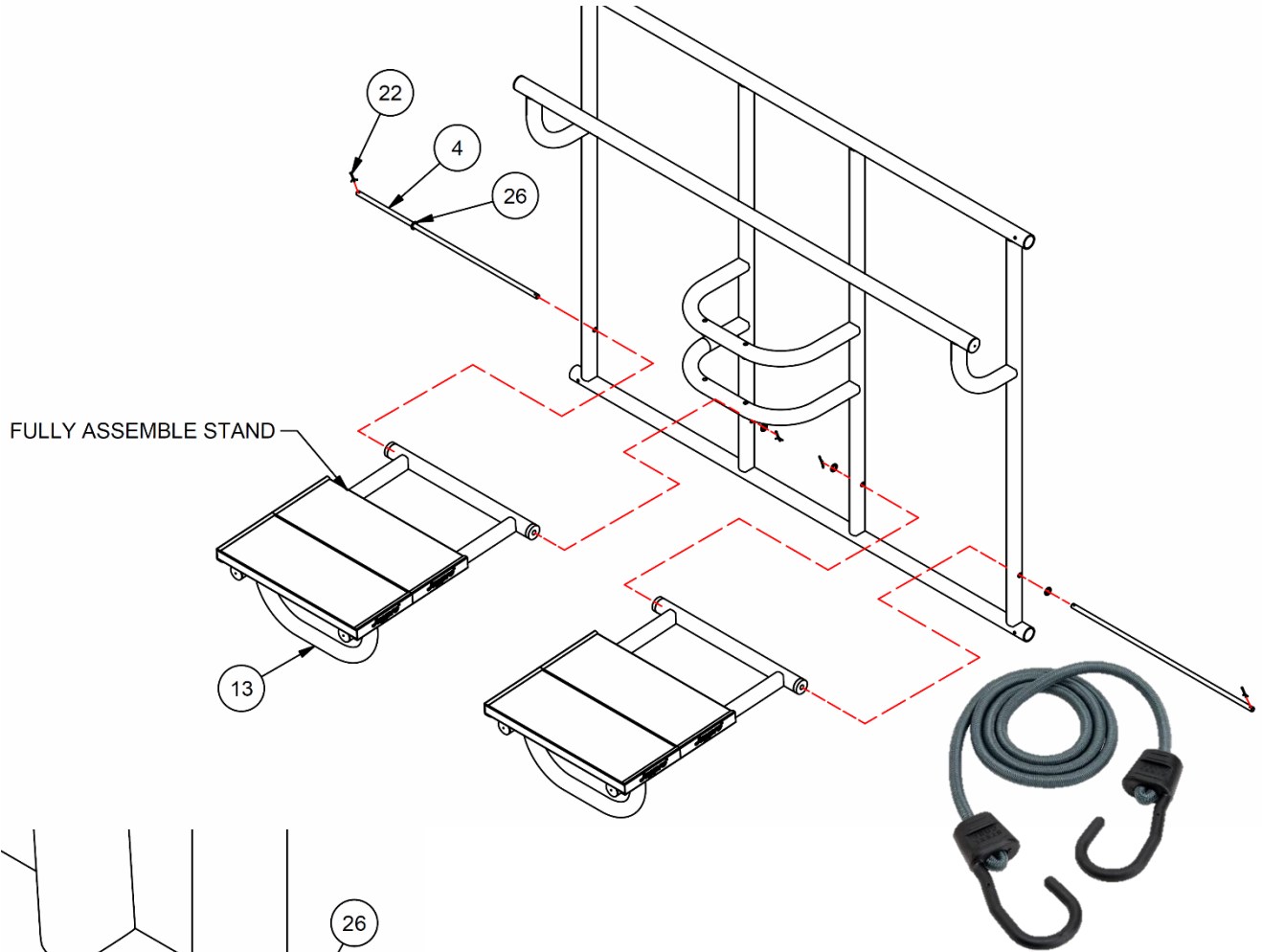


BOTTOM FRAME

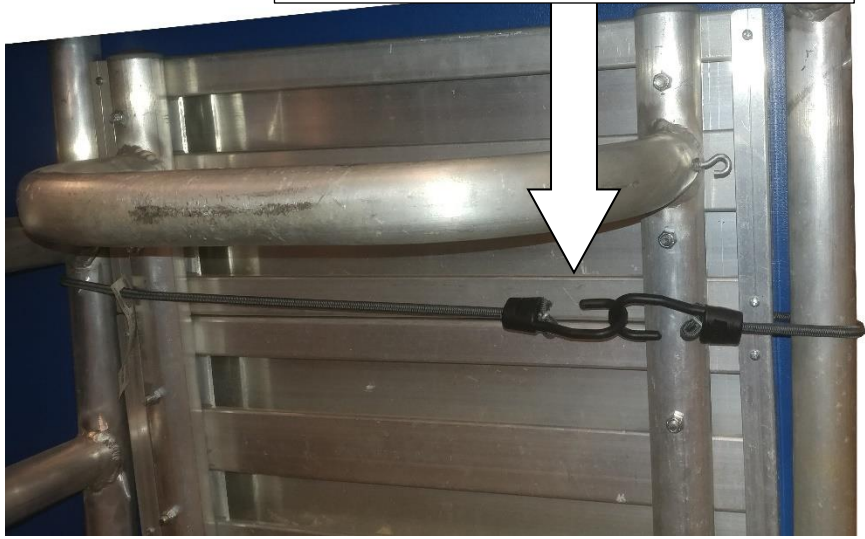
13	2	BGLC-N	COACH STAND WELDMENT
32	32	HN261	5/16-18 UNC-Nylon Lock Nut-ZP-GrNC
34	4	EP0019	PLASTIC END PLUG 77-8
36	4	PLANK-A	9 1/2" x 1 1/2" x 24" PLANK
37	16	AR5044	5/16" BOLT CLIP
38	16	HB5030	5/16-18 x 3 CARRIAGE BOLT ZP
39	8	AR5045A	9 1/2" ALUMINUM SEAT PLANK END CAP
40	16	HS5035	#8 x 1/2" PAN HEAD PHILIP SCREW SELF DRILL, ZP
ITEM	QTY	PART #	DESCRIPTION



4	2	BGLC-5	9/16" x 31" SHAFT STAND
13	2	BGLC-N	COACH STAND WELDMENT
22	4	HM6344	1/8" OD x 1 1/2" COTTER
26	4	HW5037	9/16" FLAT WASHER, ZP
ITEM	QTY	PART #	DESCRIPTION



48" BUNGIE CORDS W/ HOOKS STL CORE
P/N: RR5035



After the frame is fully assembled check all hardware to make sure it is tightened and all joints are secured. Raise the upper frame arches into position, using the strut pipes, and check for alignment. (See setup instructions)

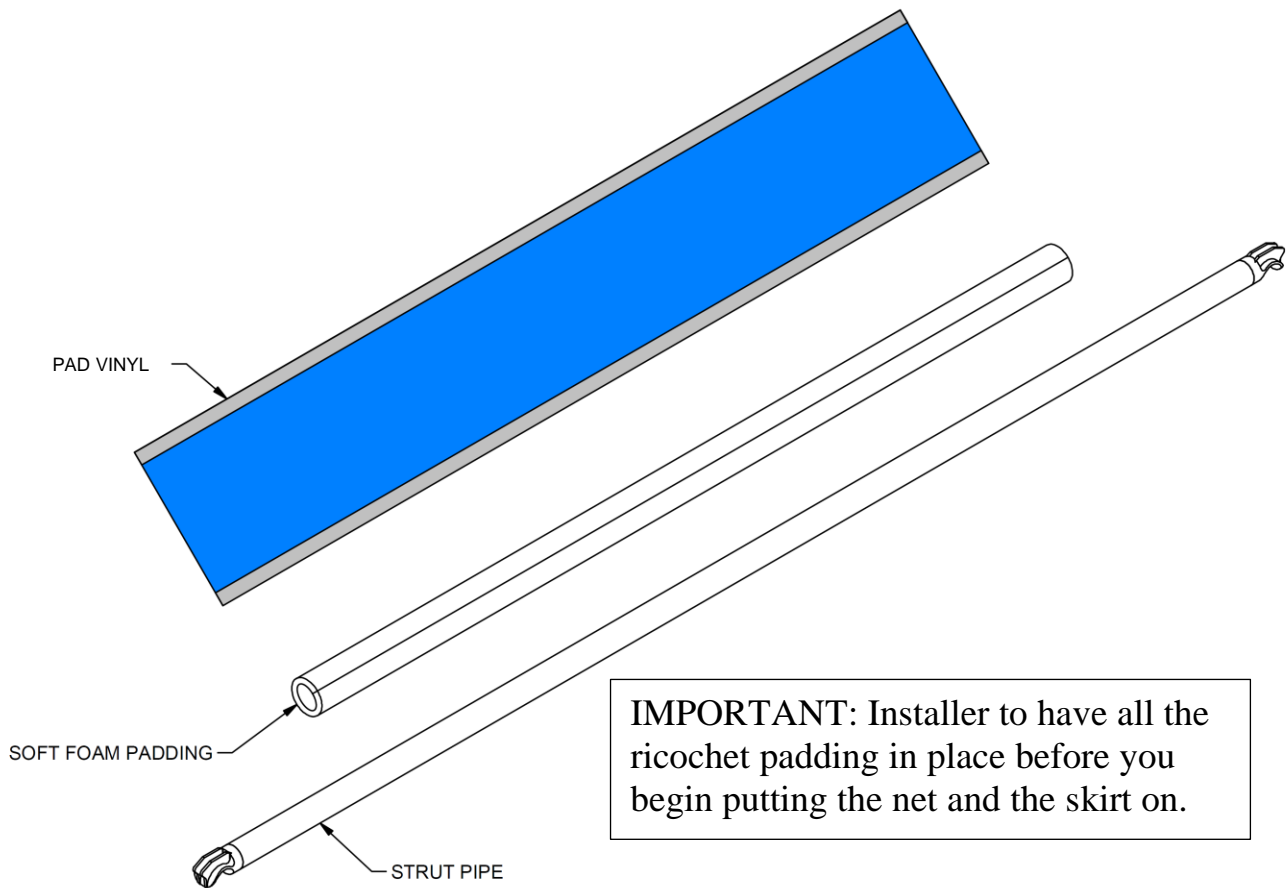
- Before installing the net and padding wipe frame clean with a clean rag or scrubbing pad.

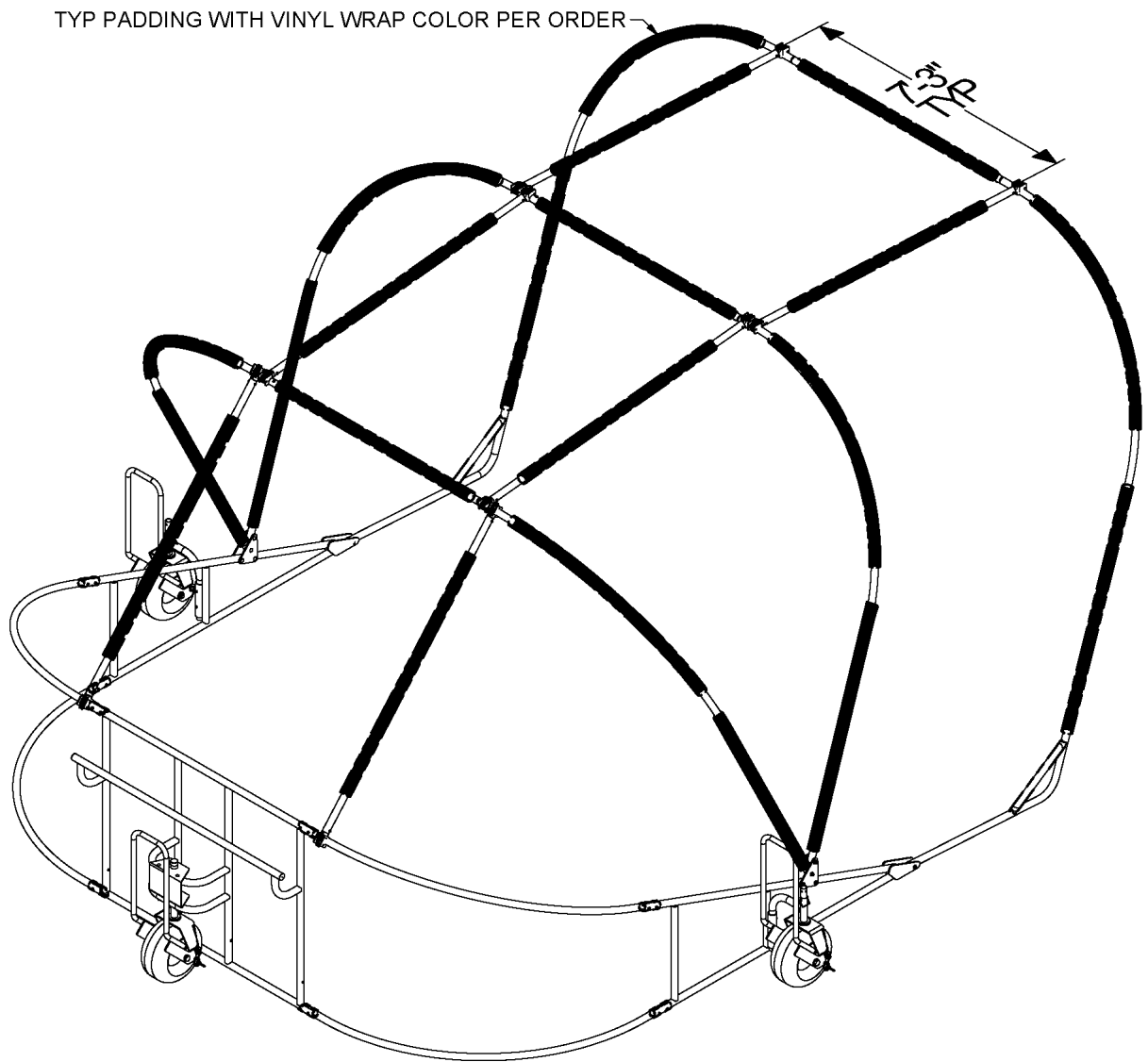
LIST OF MATERIALS (Net and Padding)

ITEM	QTY	PART #	DESCRIPTION
1	1	BLN-3	NET WITH BAFFLE
2	1	SKT-75	VINYL SKIRT
3	1	THUD-46	THUD PAD
4	1	CR0016	1/8" CORD (300 FT ROLL)
5	1	RP5012	ZIP TIES (BAG OF 100)
6	4	RP5066	ADJUSTABLE 6 FOOT STRAP
7	21	FM0028	SOFT FOAM PADDING (OPTIONAL)
8	4	FG5206	BLACK GAFFERS TAPE (OPTIONAL)
9	21	RPAD-UKITXX	PAD VINYL (OPTIONAL)

Optional Ricochet Padding P/N: BGLC-75KF

1. Attach the ricochet padding to the frame and strut members as shown, using black gaffer tape.
2. The pad material is slit along its length. Open the padding up and slide it over the pipe members. Cover each pad section with the velcro edged vinyl wrap.



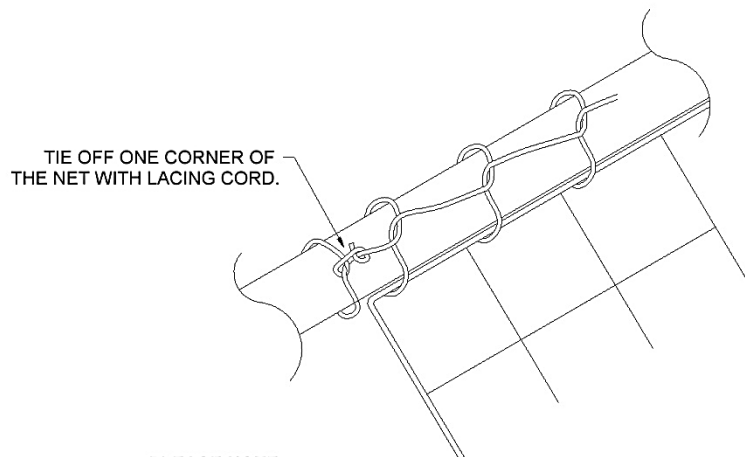


Attach net:

Description: The outer perimeter of the net is to be fully laced to both the front arch and the top member of the lower frame. (See detail showing how to lace if unfamiliar with lacing). The net will be suspended off the center two arches, by about 6”.

1. Cut a couple dozen 18” long cords from the roll of 1/8” black cord.
2. Remove the net and spread it out in front of the cage.
3. Locate the tags that call out the FRONT CORNERS, FRONT TOP and MIDDLE BACK.
4. With the frame in the folded position, take the section labeled FRONT TOP and position it in the center of the top center crossbar. Using one of the temporary cords tie off the net to the crossbar. Using additional cord pieces, tie off the leading edge of the net every couple of feet to either side of the center. Continue tying off the net, working towards the front.
5. When done, verify that the net is truly centered and the labels, LEFT FRONT CORNER and RIGHT FRONT CORNER (when looking into the cage), are in the proper corners. Note: If the labels are reversed it means the net is upside down and the baffle will end up on the wrong side (outside) of the cage – reverse the net if needed.
6. Shift the net, from side to side, as needed to center it.
7. Once the net is properly centered, go back to the TOP FRONT center point and lace the leading edge of net securely to the front arch. Starting from the center, lace to one side and then the other.

8. After the net is fully laced to the front arch – from the rear of the cage, carefully raise the front arch section using two struts.
9. Locate the next reinforced section of the net (about 8’ back from the front edge) and loosely tie it in place to the 2nd arch using the temporary positioning cords. Again, start at the middle and work to either side, tying off every couple of feet. The net should hang at least 6” away from the tubing to lessen any potential ricochet.
10. Raise the 2nd arch, using two strut and repeat step 9 for the third arch. When complete raise the third arch into position.
11. Starting at the center, tie off (every couple of ft) the net to the top member of the lower frame. Center the net, from side to side as needed, and then fully lace the back and bottom edge of the net to the top member of the lower frame.
12. Adjust the length and position of the cords on the 2nd and 3rd arches, so the net is properly positioned. Securely tie each cord. This can be done using a stepladder, with the frame in the raised position, or by lowering the frame and adjusting one section at a time. .



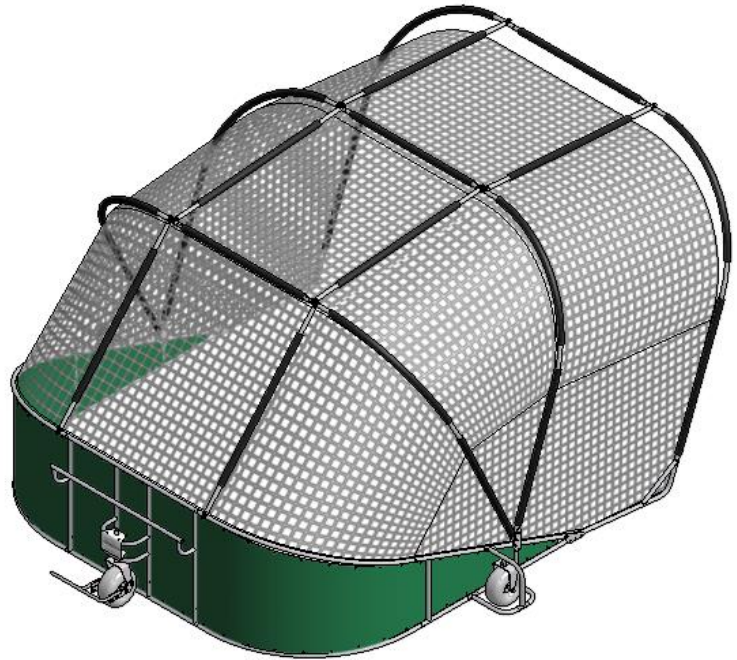
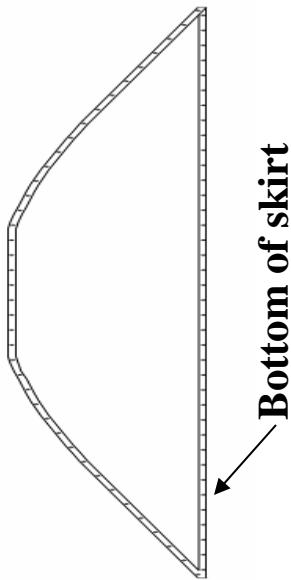
PLEASE NOTE:

- THE TYPE OF MATERIAL AND SIZE OF THE MESH WILL DETERMINE THE APPROPRIATE LACING DIMENSION.
- ALWAYS LACE CLOSE ENOUGH TO PREVENT THE PLAYING BALL FROM PASSING THROUGH ANY GAPS.
- USE HALF HITCH TYPE KNOTS ALONG THE LENGTH OF YOUR FRAME.
- DRAW EACH KNOT TIGHT BEFORE CONTINUING.



Attach skirt:

1. Fully raise the upper portion of the cage.
2. Attach the vinyl skirt to the top and bottom pipes of the lower frame, using the zip ties.
3. For best results, start at the center and work out to the front corners.



Attach thud pad:

1. With the cage in the open position, attach the thud pad to the upper member of the rear frame; using 18" lengths of the 1/8" cord.
2. Center the pad vertically.



SET-UP AND TRANSPORT

Raising and Lowering the Upper Cage:

***NOTE:** At least two people are required for the following steps.*

Caution: Keep body parts clear of pinch points between pipes and fittings.

1. Two struts are required to raise and support each arch. The raising of each arch must be done in tandem, with equal pressure and extension.
2. Attach one end of two struts to top front frame horizontal pipe, secure in place with a quick release pin or locking claw. Space these apart so that one of the struts is attached at each end of the horizontal frame pipe.
3. Push up and forward on each of the struts attached in the previous step; front section of frame should be moving easily and without binding while raising struts.
Caution: Watch for any binding of frame and/or netting while doing this, stop immediately if anything is caught on frame hardware. Take extreme care while doing these steps to prevent frame and/or net damage.
4. Place bottom end of struts onto next folding frame section, and secure in place with quick release pins or locking claw.
5. Take two more struts and place inboard of the previous two struts on the second frame folding section horizontal pipe. Secure using quick release pins or locking claw.
6. Push up and forward on each of the struts from the previous step; front and second sections of frame should be moving up and forward easily without binding while raising struts.
7. Repeat for the next frame section.
8. Attach the final two struts and move the entire upper frame into position. The entire front of cage may now begin to pull forward due to gravity at this point, and will come to rest on the ground.
9. Place the bottom clamp onto top pipe of the lower frame, and secure in place with quick release pins or locking claw. Some effort may be required to seat these last two fittings in place, depending on net tension and the ground formation in your assembly working area.
10. To disassemble, or 'fold', unit – reverse above steps. Use caution when lowering the frame sections to avoid injury.

After each use inspect all fittings, hardware, pipes, and net for integrity and tightness. Any damage or loose hardware may result in unsatisfactory performance or failure, Contact factory or dealer for replacement parts.

TRANSPORTING CAGE:

Cage can be transported by going forward or backward. Transporting the cage should be done with 2 or 3 people.

Note: Cage should only be transported in the fully folded position. Never move cage when fully raised.

1. To transport the cage fully lower the upper frame. Gather the net and baffle and secure it to the rear frame using the adjustable 6-foot strap (RP5066).
2. Lift the rear of the cage by lowering or raising the handle. With one operator steering and keeping the rear frame raised, two others are required to push against the cage in the two corners.

To transport the cage sideways, rotate side wheels by releasing the retaining pins and rotating the wheels 90 degrees. Reinsert retaining pins.

MAINTENANCE INSTRUCTIONS

Conduct a thorough inspection of the cage annually looking for loose bolts and nuts. Due to normal vibration during play, fasteners may work themselves loose. Tighten adequately on a regular basis to prevent injury.

Apply a small amount of lithium grease to any moving parts, especially axles and wheels. If wheels have zirk fittings, you may inject grease into wheel bearings using a commercially available grease gun.

Inspect net and padding for wear; contact factory to arrange for replacements or servicing.

Paint retouching – any commercially available rust-preventive paint is acceptable for touching up chipped paint and areas of rust. Follow paint manufacturer's suggestions for proper application of paint & primer. (All steel parts provided are either galvanized and/or powder coated for extra protection, but priming and painting should be adequate for proper maintenance of equipment after it leaves the factory.)

Storage: Unit can be stored outside, but if possible protected from the elements. Batting cage is designed with climatized and weather resistant materials, but will age over time. Aging is accelerated if exposed to the weather, especially in Northern regions where freezing is expected during winter months. If possible, as part of seasonal storage, store indoors (net can be removed if desired to extend the life of this item; see catalog or call number listed above if replacement net is needed).

For replacement parts, information, or questions, please call Jaypro Sports at 1-800-243-0533 or find us online at www.jaypro.com