

EcoLiner™ Plus Product Manual



Jasper St., Unit F, Aurora, CO 80011 T 800.624.6706 F 303.364.7796 • Newstripe.com

EcoLiner™ Plus Manual / 4484.0917

ECOLINER™ Plus

ALWAYS wear safety goggles or protective eye-wear when operating the unit!

TABLE OF CONTENTS

Precautionary Warning.....	Page 1
Assembly.....	Page 2 -3
Operation	Page 4
Recharging the Battery.....	Page 5
Cleaning Procedures.....	Page 6
Maintenance.....	Page 6
Parts List with Images.....	Page 7-8
Troubleshooting.....	Page 9
Warranty.....	Page 10

Thank you! And Congratulations on your purchase of the **EcoLiner™ Plus** paint marking machine.

With proper care, service and clean up, the **Newstripe EcoLiner™ Plus** is designed to give you years of trouble free, accurate line marking. It is important to familiarize yourself with the machine before start-up. Please take the time to **THOROUGHLY READ THIS MANUAL**. This will guarantee a good start using your **EcoLiner™ Plus** and a longer, trouble free machine life.

Please check the serial number on your unit. This Manual is for units with serial number 1017477 and above only. For units with serial numbers below 10177477, please contact Newstripe for the correct manual.



ECOLINER™ Plus

ALWAYS wear safety goggles or protective eye-wear when operating the unit!



PRECAUTIONARY WARNING!

- Please read and understand all operation instructions as detailed in this manual. Failure to follow specified instructions may result in equipment damage or serious injury to personnel up to and including death!
- **ALWAYS STRAIN THE PAINT.** Field marking paint often has oversized material, lumps, and debris. If not strained, these contaminants will be drawn into the pump, shut-off valve, hoses, etc., and may restrict paint flow.
- **THIN THE PAINT,** as per manufacturer's recommendations prior to placing the suction hose into the paint bucket. Almost all field-marking paints **MUST BE THINNED** before use with the EcoLiner™. These paints are typically thinned at a minimum ratio of 1:1. Follow suggested paint thinning guidelines per the paint manufacturer's instructions.
- **NEVER** perform maintenance on the machine while the system is running
- Please note that modifying, changing or servicing any portion of the machine, system or components outside of the procedures and parts outlined in the owner's manual will **VOID** the warranty.
- Always consult your Facility Safety and/or Personnel Department for specified safety protocols prior to operating this equipment.



ECOLINER™ Plus

ALWAYS wear safety goggles or protective eye-wear when operating the unit!

Your EcoLiner™ box should include:

- Chassis/Handle assembly with paint spray hose attached
- Cleaning Tank
- Paint pail lid
- Battery Charger
- Cloth/mesh strainer

Parts bag containing:

- Support Arm with Star Knob
- Spray gun assembly with Star Knob
- Paint Suction Hose
- Owner's manual



ASSEMBLY

Required Items and Tools

- 18AH SLA, 12 volt motorcycle battery with dimensions of 6 7/8"l x 3 7/16" w x 6 1/8" h (Not Included)
- 1/2" Wrenches or adjustable crescent Wrenches (2 required)

1. Remove packing from around parts box, pail lid, chassis and set aside. Leave foam wraps on handle braces at this time.
2. Rotate the handles to their raised position, while lifting up on the rear of the machine.
3. Remove the foam wraps from the handle braces.
4. Position the spray hose so that it is in front of the handle.
5. Insert one carriage bolt through the left hand brace and handle from the outside. Use one female star knob to secure the brace.
6. Insert the second carriage bolt through the right-hand brace and handle from the outside. (Pic 2)
7. Place the retaining clip for the spray hose over the bolt and secure with a female star knob.
8. Insert support arm into receiver tube on right-hand side of the chassis until it stops and secure with one large star knob.



Pic 1



Pic 2



ECOLINER™ Plus

ALWAYS wear safety goggles or protective eye-wear when operating the unit!

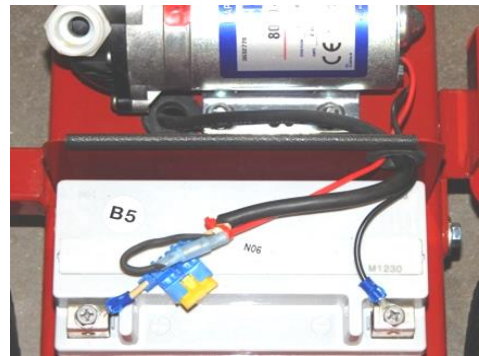
9. Slide spray gun onto upright with mounting tube facing forward and nozzle facing downward. Secure with one large star knob. Raise or lower to adjust line width.
10. Attach spray hose to gun and lightly tighten with a wrench.
11. Attach suction hose to pump outlet and hand tighten only. (Pic 3)
12. Insert cleaning tank in cleaning tray by simply pressing into place. (Pic 6)
13. Install one 18AH SLA, 12 volt motorcycle battery with dimensions of 6 7/8"l x 3 7/16"w x 6 1/8"h (Not included) into battery tray and attach the black wire to the negative (-) terminal and the white wire to the positive terminal (+). (Pic 4, 5)



Pic 3



Pic 4



Pic 5



Pic 6



ECOLINER™ Plus

ALWAYS wear safety goggles or protective eye-wear when operating the unit!

OPERATION

1. Always pre-lubricate the sprayer with water prior to operation. Fill the pail ½ full with water and secure the lid, making sure the suction hose with filter screen is at the bottom of the pail. It is advisable to familiarize yourself with the equipment operation by using water the first time.
2. Turn on the pump with spray rocker switch on the handle. Allow 15-30 seconds for the pump to prime.
3. The unit is shipped with the nozzle for a 4" wide line installed. Note: The height of the spray nozzle will increase or decrease the line width. Raise or lower as needed
4. Unsnap the pail lid and pour properly thinned paint into the pail. **NOTE:** These paints are typically thinned at a minimum ratio of 1:1. Follow suggested paint thinning guidelines per the paint manufacturer's instructions.
5. Press the forward part of the spray rocker switch to the on position. Allow 15-30 seconds for the pump to prime. Check for leaks and tighten any fittings as required.
NOTE: Back position is momentary on, center is off, forward position is continuous operation.
6. Position the spray nozzle and shields where the painted line is to begin, and engage the spray rocker switch to desired position. An even flow of paint should spray from the nozzle.
8. Put spray rocker switch into center position, when you would like to machine to stop spraying.
9. To use the spray gun as a hand sprayer, remove the gun from the gun mount. Place the spray rocker switch to forward (continuous) position. After use, turn off spray rocker switch (center position) and return gun to gun mount.



OPERATIONAL NOTE!



- **NOTE:** if the pump does not run, check the fuse in the blue fuse holder. Check first to make sure the fuse is secured pushed in all the way. If this is not the problem, replace the fuse. If the unit will still not run, and both power supply cables are attached correctly to a fully charged battery, contact Customer Service at 1-800-624-6706.



1700 Jasper St., Unit F, Aurora, CO 80011 T 800.624.6706 F 303.364.7796 • Newstripe.com

EcoLiner™ Plus Manual / 4484.0917

Page 4 of 10

ECOLINER™ Plus

ALWAYS wear safety goggles or protective eye-wear when operating the unit!

RECHARGING THE BATTERY

Before using the battery charger, Please Read All Instructions.

1. Connect red lead to positive battery terminal (+).
2. Connect black lead to negative battery terminal (-).
3. Plug charger in any standard 110 volt AC outlet.
4. The green LED will flash when fully charged. Normal charge cycle is overnight.
5. The battery charger is equipped with a self-resetting circuit breaker. In the event of an overload, the breaker will trip. After a cooling off period, it will reset with an audible clicking sound. Repeated or continuous clicking (more than 30 minutes) may indicate reversed cables or faults in the battery.



PRECAUTIONARY WARNING!



- **Before** using the battery charger, Please Read All Instructions that came with the charger.
- **NOTE:** The power supply cord does not have to be detached to recharge the battery. However, the spray pump toggle switch must be in “OFF” position.
- **NOTE:** If all connections are correct, have the battery inspected for function at a reputable dealer.



1700 Jasper St., Unit F, Aurora, CO 80011 T 800.624.6706 F 303.364.7796 • Newstripe.com

EcoLiner™ Plus Manual / 4484.0917

Page 5 of 10

ECOLINER™ Plus

ALWAYS wear safety goggles or protective eye-wear when operating the unit!

CLEANING PROCEDURES

CLEAN AFTER EVERY USE

1. When your striping job is complete, remove the pail lid and set aside. Pull out the suction hose and place the end into a clean water container. Remove paint pail and place empty pail on machine.
2. Wipe off or rinse off pick up tube, screen on pick up tube, and pail lid.
3. Remove nozzle cap, nozzle, and valve seat and put in container of water to soak.
4. Turn on the spray rocker switch to “spray” position and flush clean water through nozzle.
5. Operate spray nozzle until the gun is cleared of all paint.
6. Clean nozzle parts (26, 27, 28) that have been soaking and reassemble on spray gun.
7. Clean and rinse exterior of machine. Pressure washing is not recommended. Use soapy water (dishwashing detergent or Simple Green) once each week.

NOTE: Always leave some of the cleaning solution or Newstripe’s pump protector in the pump when not in use. This keeps the internal pump components lubricated. **DO NOT** run the pump without liquid. If you need to store the unit for **extended periods** or in **freezing areas**, run water and dishwashing detergent through the pump to clean out all paint and replace with Newstripe’s pump protector. For further protection, order Newstripe pump protector to use during storage.



Pic 7

MAINTENANCE

ITEM	CHECK	MAINTENANCE ACTION
Paint Pail/Tank	After every use	Clean paint pail/tank, hoses and nozzle
Hoses and Pump	After every use	Run soapy water through pump and hoses for additional cleaning
Handles	Monthly	Check handles for tightness to frame

****For additional instructions please contact Newstripe, Inc at 800-624-6706**



1700 Jasper St., Unit F, Aurora, CO 80011 T 800.624.6706 F 303.364.7796 • Newstripe.com

EcoLiner™ Plus Manual / 4484.0917

ECOLINER™ Plus

ALWAYS wear safety goggles or protective eye-wear when operating the unit!

PARTS LIST

<u>Item Number</u>	<u>Description</u>	<u>Part Number</u>	<u>Item Number</u>	<u>Description</u>	<u>Part Number</u>
#1	Chassis	10004487	#11	Suction filter, dip tube	10002842
#2	Handle	10004488	#12	Power Supply Harness (To Battery)	10004499
#3	Handle Support Braces (2)	10004489	#13	Fuse 20 AMP, ATO	10002836
#4	Spray Gun Assembly	10004601	#14	Hose, Paint	10000695
#5	Spray Control, Rocker Switch	10004474	#15	Spray Shields (2) (optional kit)	10004506
#6	Cleaning Tank	10004482	#16	Star Knob (2)	10000007
#7	Support arm (for spray head)	10004491	#17	Female Star Knob	10004480
#8	Lid, 5-gallon pail	10004516	#18	Wheel & Tire Assembly	10004705
#9	Pump, 12 volt, diaphragm	10004551			
#10	Hose, Dip Tube	10004498			

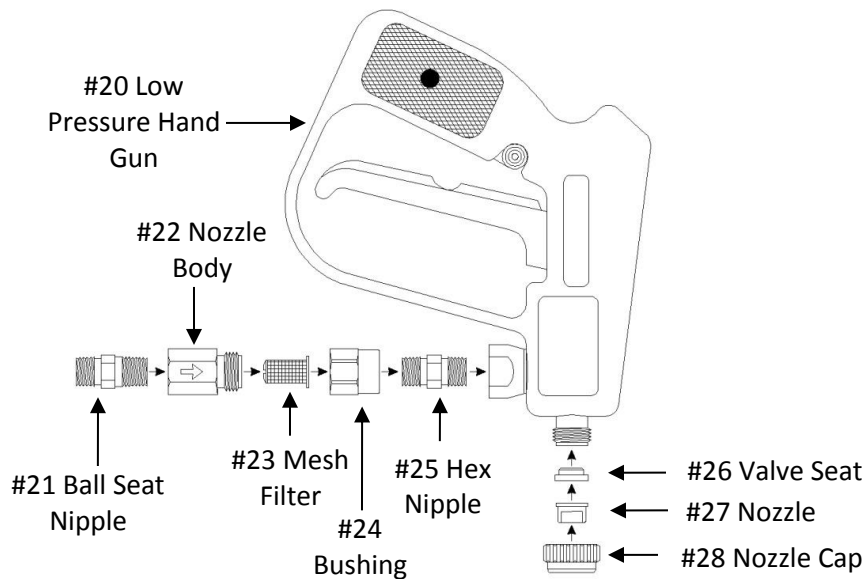
* See Spray Gun Assembly below for breakdown of part numbers

SPRAY GUN ASSEMBLY

<u>Item</u>	<u>Description</u>	<u>Part Number</u>
#20	Low Pressure Hand Gun	10004481
#21	¼" Ball Seat Nipple	10000731
#22	Nozzle Body	10000028
#23	Nozzle Screen Pack of 4	10003496
#24	3/8" x ¼" Bushing	10002641
#25	¼" Hex Nipple	10004130
#26	Valve Seat	10000136
#27	Nozzle (4 pack)	Select Nozzle
#28	Nozzle Cap (4 pack)	10001890

SELECT NOZZLE FOR APPLICATION

<u>Item</u>	<u>Description</u>	<u>Part Number</u>
5002	2" Line	10001891
8005	4" -5" Line (Heavy Turf)	10003493
8004	4" -5" Line (Turf/Asphalt)	10001893
8002	4" -5" Line (Concrete)	10001892
9505	5" -6" Line	10001894



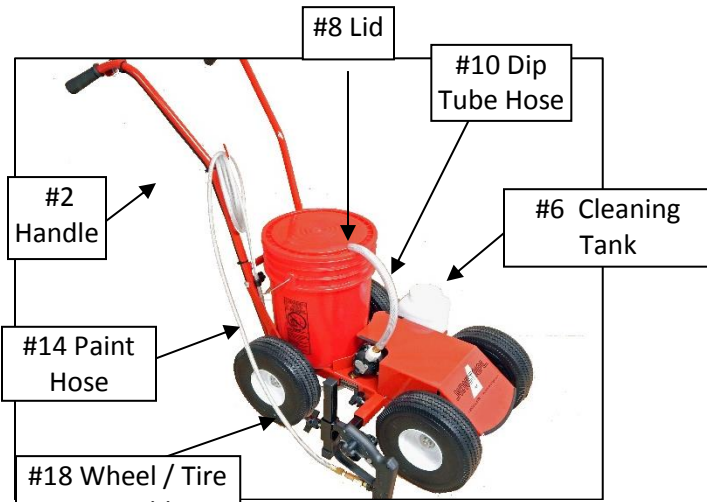
1700 Jasper St., Unit F, Aurora, CO 80011 T 800.624.6706 F 303.364.7796 • Newstripe.com

EcoLiner™ Plus Manual / 4484.0917

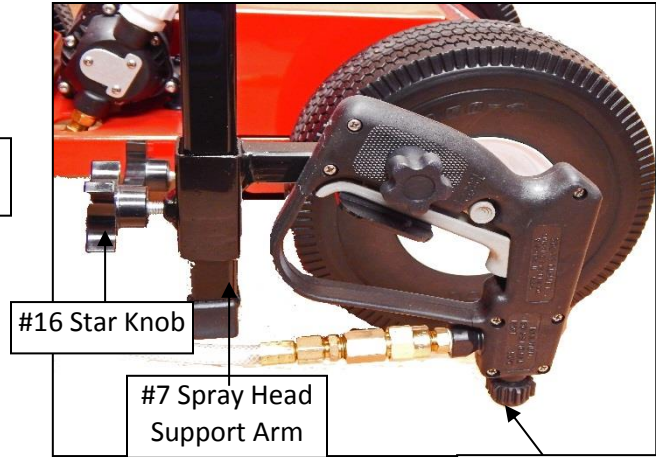
Page 7 of 10

ECOLINER™ Plus

ALWAYS wear safety goggles or protective eye-wear when operating the unit!



Pic 8

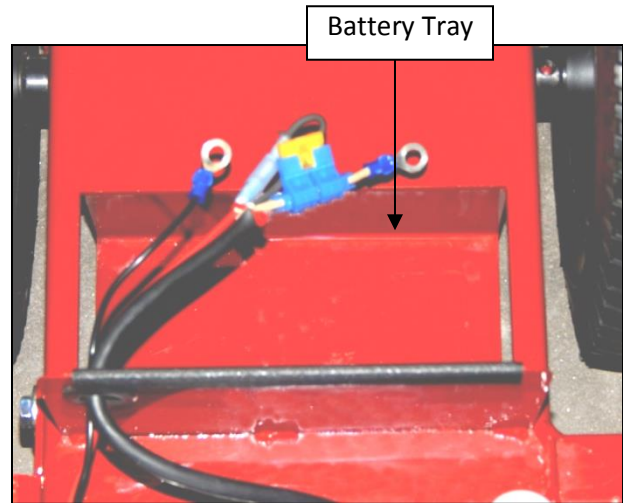


Pic 9

#4 Spray Gun Assembly



Pic 10



Pic 11



1700 Jasper St., Unit F, Aurora, CO 80011 T 800.624.6706 F 303.364.7796 • Newstripe.com

EcoLiner™ Plus Manual / 4484.0917

ECOLINER™ Plus

ALWAYS wear safety goggles or protective eye-wear when operating the unit!

TROUBLESHOOTING GUIDE

PROBLEM	POSSIBLE CAUSE	REMEDY
Pump will not run	Battery not charged Fuse blown Fuse disconnected	Charge Battery Change Fuse Check fuse holder connection and wires
Pump will not prime	Pump or hoses may be restricted	Disconnect supply and discharge hoses. Clean out hoses. Pour hot water into inlet opening of pump and let soak. Reconnect hoses and start pump again.
Pump still won't prime		If hot water alone does not remove clog, pour liquid dish soap or the "Simple Green" product into the pump inlet. Jog the pump (operate toggle switch briefly) to get the soap into the pump and let it soak (15-30 minutes). Attach hoses and try pumping water. If pump start pumping, let it circulate on the water for 5-10 minutes before adding paint. The pump does not need to be rinsed of the soap as the soap will mix easily with the paint. If still not working, call factory. Disassembly of pump will VOID the warranty.
Paint leaving nozzle in stream, not spray	Paint too thick	Thin paint.
Spray inconsistent	Obstruction in nozzle	Remove nozzle screen. Clean or Replace.
Spray inconsistent	Obstruction or clog in pick up tube screen	Remove pick up tube and filter screen. Filter paint, clean screen and remove clogs.
Spray pattern too thin or uneven	Wrong nozzle or spray head height is incorrect. Viscosity may be too thick	See Selection Guide. Adjust spray head height up or down. Nozzle slot has to be horizontal to ground. Thin paint as per manufacturer recommendation
Paint drips after being shut off	Dirty or worn check ball in nozzle or gun filter Faulty control lever	Disassemble and clean, or replace Replace

Please call us! If you have any questions during setup, painting or cleaning 1-800-624-6706



1700 Jasper St., Unit F, Aurora, CO 80011 T 800.624.6706 F 303.364.7796 • Newstripe.com

EcoLiner™ Plus Manual / 4484.0917

Page 9 of 10

ECOLINER™ Plus

ALWAYS wear safety goggles or protective eye-wear when operating the unit!

THE NEWSTRIPE WARRANTY – 12 MONTH

NEWSTRIPE, INC., WARRANTS TO THE ORIGINAL PURCHASER, FOR 12 (TWELVE) MONTHS AFTER DATE OF PURCHASE, THAT THE EQUIPMENT* HEREBY SOLD SHALL BE FREE OF DEFECTS IN MATERIALS AND WORKMANSHIP. THIS WARRANTY DOES NOT EXTEND TO ANY DAMAGE OR MALFUNCTION RESULTING FROM MISUSE, NEGLIGENCE, ACCIDENT, IMPROPER OPERATION, OR NORMAL WEAR AND TEAR.

Damage incurred in shipment from Newstripe, Inc. to the customer is the total responsibility of the carrier. The CUSTOMER MUST NOTE DAMAGES on the Bill of Lading of Trucking Company or Railroad; and Newstripe, Inc. will furnish to the customer the cost or parts and labor. The customer can then bill the common carrier for the damages by placing his signature on the documents.

The Newstripe, Inc. obligation under this warranty and any implied warranties is limited to replacement or repair of defective parts of its manufacture without charge for 12 (Twelve) months from date of purchase. For service under this warranty, buyer shall ship the defective part or parts of the equipment, transportation prepaid, to Newstripe, Inc. together with a written description of any claimed defect and proof of purchase date of the materials being returned. **Prior to retuning any part or machine, the CUSTOMER must obtain a Return Materials Authorization number. Call 1-800-624-6706.**

***Gasoline engines, compressors, pumps (including airless) and Transaxles are furnished with their respective manufacturer's warranties only. Such components are not covered by any warranty of Newstripe, Inc. Where Newstripe elects to extend manufacturers' warranties, the warranty shall be pro-rated as to cover 100% of the cost to replace or repair materials and parts for the first 12 months of ownership and 60% for the remaining 6 month period.**

The responsibilities described above are the only responsibilities of Newstripe, Inc. under this written warranty or any implied warranty, and may be exercised only within 12 (Twelve) months from the date of purchase. In no event shall Newstripe, Inc. be liable for incidental or consequential damages and no person had any authority to bind it to any representation or warranty, not be responsible for work done, materials furnished or repairs made by others without its' specific written authorization.

THIS WARRANTY SHALL BE IN LIEU OF ANY AND ALL OTHER WARRANTIES, EXPRESSED OR IMPLIED, INCLUDING ANY WARRANTIES OF MERCHANTABILITY OR FITNESS FOR A PARTICULAR PURPOSE, AND THERE IS NO OTHER REPRESENTATION OR WARRANTY OF ANY KIND WITH RESPECT TO THE GOODS SOLD HEREBY EXCEPT AS SET FORTH HEREIN. IT IS EXPRESSLY AGREED THAT THIS WARRANTY SHALL BE LIMITED TO THE ADJUSTMENT, REPAIR OR REPLACEMENT OF PARTS AND THE LABOR AND SERVICES REQUIRED THEREBY. IN NO EVENT, INCLUDING ANY CLAIM FOR NEGLIGENCE, SHALL NEWSTRIPE, INC. BE LIABLE FOR INCIDENTAL OR CONSEQUENTIAL DAMAGES.

Sincerely,
Newstripe, Inc



1700 Jasper St., Unit F, Aurora, CO 80011 T 800.624.6706 F 303.364.7796 • Newstripe.com

EcoLiner™ Plus/4484.0615