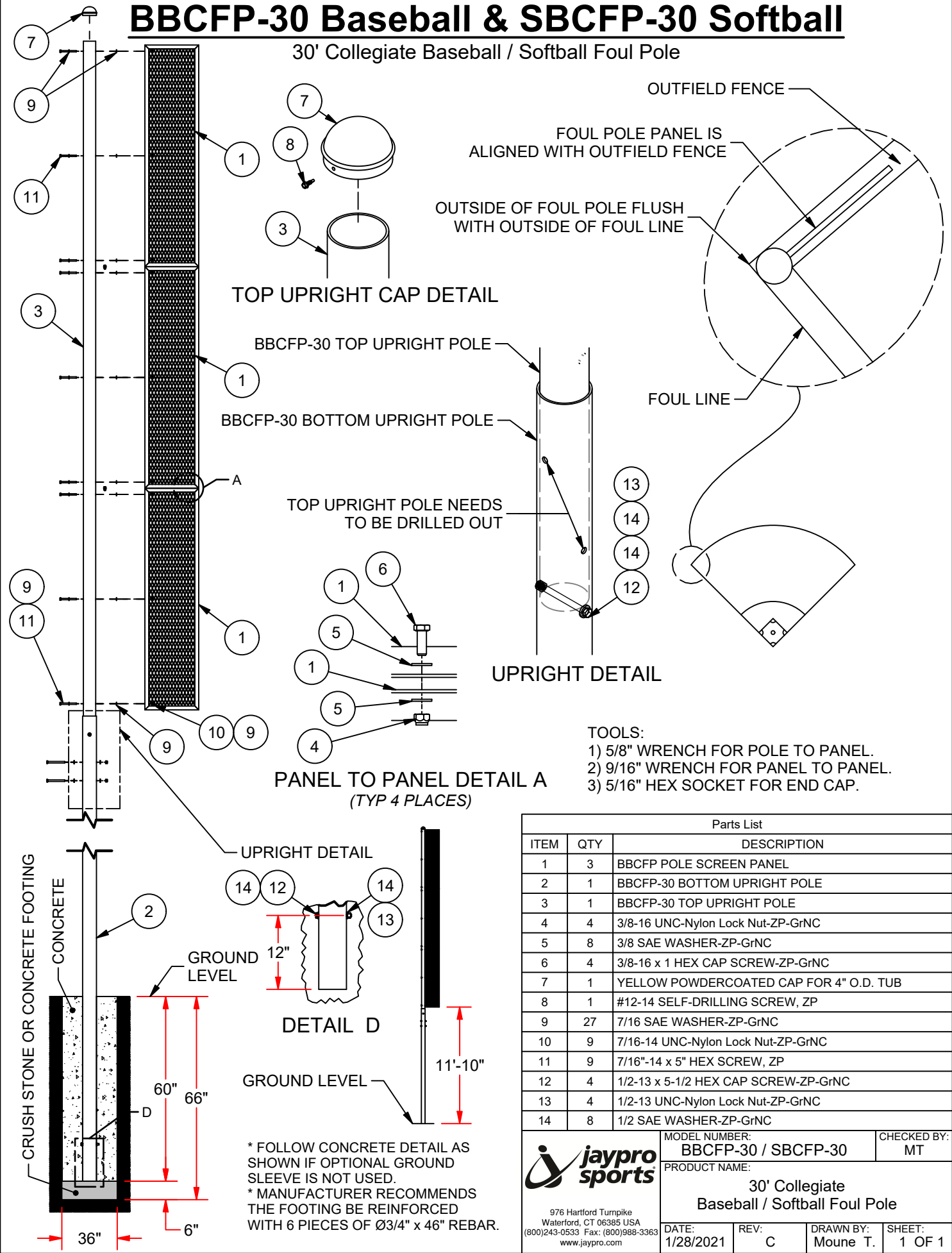


# BBCFP-30 Baseball & SBCFP-30 Softball

30' Collegiate Baseball / Softball Foul Pole



FOUL POLE PANEL IS ALIGNED WITH OUTFIELD FENCE

OUTSIDE OF FOUL POLE FLUSH WITH OUTSIDE OF FOUL LINE

### TOP UPRIGHT CAP DETAIL

BBCFP-30 TOP UPRIGHT POLE

BBCFP-30 BOTTOM UPRIGHT POLE

TOP UPRIGHT POLE NEEDS TO BE DRILLED OUT

### PANEL TO PANEL DETAIL A (TYP 4 PLACES)

### UPRIGHT DETAIL

TOOLS:

- 1) 5/8" WRENCH FOR POLE TO PANEL.
- 2) 9/16" WRENCH FOR PANEL TO PANEL.
- 3) 5/16" HEX SOCKET FOR END CAP.

### UPRIGHT DETAIL

### DETAIL D

GROUND LEVEL

\* FOLLOW CONCRETE DETAIL AS SHOWN IF OPTIONAL GROUND SLEEVE IS NOT USED.  
 \* MANUFACTURER RECOMMENDS THE FOOTING BE REINFORCED WITH 6 PIECES OF Ø3/4" x 46" REBAR.

### Parts List

ITEM	QTY	DESCRIPTION
1	3	BBCFP POLE SCREEN PANEL
2	1	BBCFP-30 BOTTOM UPRIGHT POLE
3	1	BBCFP-30 TOP UPRIGHT POLE
4	4	3/8-16 UNC-Nylon Lock Nut-ZP-GrNC
5	8	3/8 SAE WASHER-ZP-GrNC
6	4	3/8-16 x 1 HEX CAP SCREW-ZP-GrNC
7	1	YELLOW POWDERCOATED CAP FOR 4" O.D. TUB
8	1	#12-14 SELF-DRILLING SCREW, ZP
9	27	7/16 SAE WASHER-ZP-GrNC
10	9	7/16-14 UNC-Nylon Lock Nut-ZP-GrNC
11	9	7/16"-14 x 5" HEX SCREW, ZP
12	4	1/2-13 x 5-1/2 HEX CAP SCREW-ZP-GrNC
13	4	1/2-13 UNC-Nylon Lock Nut-ZP-GrNC
14	8	1/2 SAE WASHER-ZP-GrNC

976 Hartford Turnpike  
 Waterford, CT 06385 USA  
 (800)243-0533 Fax: (800)988-3363  
 www.jaypro.com

MODEL NUMBER: <b>BBCFP-30 / SBCFP-30</b>	CHECKED BY: MT		
PRODUCT NAME: <b>30' Collegiate Baseball / Softball Foul Pole</b>			
DATE: 1/28/2021	REV: C	DRAWN BY: Moune T.	SHEET: 1 OF 1