

QUALITY. EXCELLENCE. PERFORMANCE.

A PORTABLE SOLUTION WITH **PERFECT DESIGN.**
THE PERFECT MOUND™

The Perfect Mound™ portable pitching mound offers consistent playability for ALL ages and levels. The lightweight design, accurate specifications, and an industry leading 10-year limited warranty, makes The Perfect Mound™ the only solution.



**FOUR COUNTRIES.
 NEARLY EVERY STATE.
 HUNDREDS OF LOCATIONS.**

*"We specialize in building synthetic playing surfaces for youth and pro's throughout the Midwest. The Perfect Mound is truly its name-sake and we endorse and prefer this product fully. As a pitcher myself, I have been on many different surfaces and mounds and this product is the **only portable option** that has **true playability**."*

JAMESON SHELEY
 General Manager
 Byrne & Jones Sports Construction

WE
V



Easy assembly process -
 see the video now!



PORTABLE.

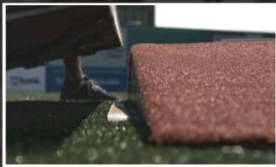
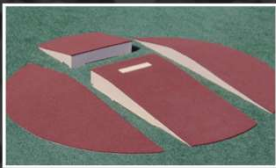


YOUTH MOUND



AUTHENTIC.

MAJOR LEAGUE SPECS - BUILT FOR THE ULTIMATE YOUTH EXPERIENCE



"We host twelve and under Little League teams from across the nation. We own more than eight Perfect Mounds and we service forty teams per week. The Perfect Mound stands up to tough play and conditions. They are easy to maintain and are a real labor saver."

JIM WISE
*Head Groundskeeper
Cooperstown All-Star Village*



EASY ASSEMBLY PROCESS

LEARN MORE @

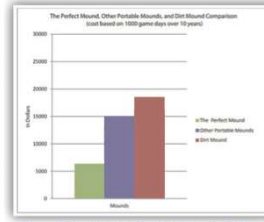


DURABLE.

Industrial grade materials intended to perform - saving you thousands...



YOUTH MOUND



YOU SAVE ▼
\$8,905
 SAVINGS COMPARED TO OTHER PORTABLE MOUNDS...
\$11,905
 SAVINGS COMPARED TO A DIRT MOUND...

*10-year total cost of owning The Perfect Mound - \$6,905
 *10-year total cost of owning other portable mounds - \$15,000
 *10-year total cost of owning dirt mounds - \$18,000
 *Cost based on 2019-2020 USD

ADULT MOUND



YOU SAVE ▼
\$26,505
 SAVINGS COMPARED TO DIRT MOUNDS...

*10-year total cost of owning The Perfect Mound - \$22,495
 *10-year total cost of owning dirt mounds - \$49,000
 *Cost based on 2019-2020 USD

NEVER REPAIR OR BUILD MOUNDS AGAIN. PERIOD.

RUGGED ENGINEERING WITH THOUGHTFUL DESIGN.

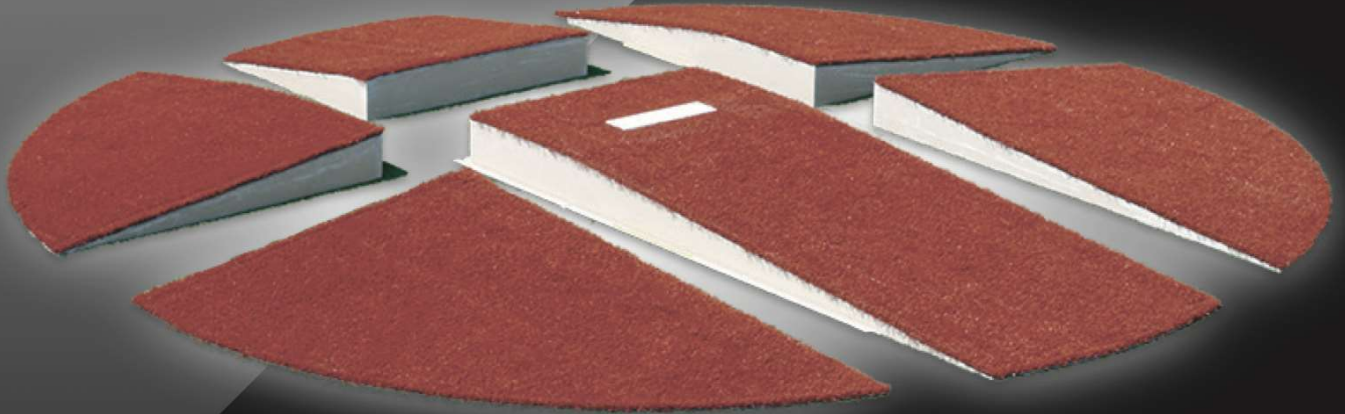


NO MORE WASTED HOURS.
FULLY REPLACEABLE TURF - FEATURING AN INDUSTRY LEADING 10-YEAR FIBERGLASS LIMITED WARRANTY

CHOOSE TURF COLOR AND BRANDING OPTIONS

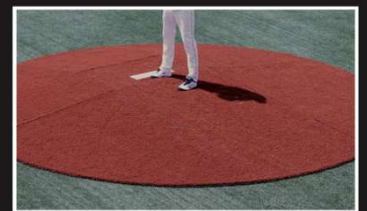


LEARN MORE @



"I pitched on The Perfect Mound for years on my way to the Big Leagues. No matter the conditions or the opponent, I was ready to perform knowing that the mound was ready as well. I'm proof that this mound gets pitching results."

TREVOR RICHARDS
Major League Baseball RHP
*Pitched on The Perfect Mound 2015-'17



PERFORMANCE.

MAJOR LEAGUE SPECS AND FIELD COMPATIBLE TURF
BRING YOU THE MOST REALISTIC MOUND ON THE MARKET



ADULT MOUND

OUR PRODUCTS

COMPATIBLE.
Any field. Any surface.
EVERY level of play.



YOUTH MOUND

- > 4 Piece - 10' Circle Designed for Youth Baseball
- > 2 Person Portability Lift-&Carry Design
- > Engineered with Industrial Grade Fiberglass
- > Patented Interlocking Flange Technology
- > Entire Mound Turf Replacement System
- > Industry Leading 10-Year Limited Warranty



ADULT PITCHING MOUND

- > 6 Piece - 18' Circle Designed to Major League Specs.
- > Lift-&Carry Design Allows for Portability
- > Engineered with Industrial Grade Fiberglass
- > Patented Interlocking Flange Technology
- > Entire Mound Turf Replacement System
- > Industry Leading 10-Year Limited Warranty



BULLPEN CONFIGURATIONS

- > Only Specifically Designed Bullpens on the Market
- > Multi Piece Designed to Meet Major League Specs.
- > Lift-&Carry Design Allows for Portability
- > Engineered with Industrial Grade Fiberglass
- > Patented Interlocking Flange Technology
- > Industry Leading 10-Year Limited Warranty



CUSTOMIZABLE SPORTURF SURFACE

- 9/16" pile height
- Polypropylene
- Available in additional special order colors



INDUSTRIAL GRADE FIBERGLASS

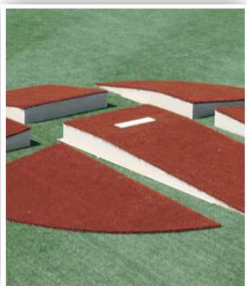
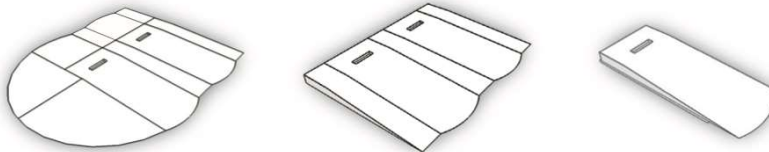
- 10-year limited warranty
- Patented "flange locking system"™
- Made in USA



LOW PROFILE HOOK & LOOP

- Polyester fastener with acrylic adhesive
- .3mm product thickness
- 1.1lb/in(sq) static shear strength
- Dynamic tensile: >0.69N/cm(sq)

SEE OUR
PURCHASING
OPTIONS @



BULLPEN CONFIGURATIONS



ONE OF A KIND.

**CUSTOM CONFIGURATIONS SOLVE
ALL YOUR FIELD OR COMPLEX'S NEEDS**

LEARN MORE @



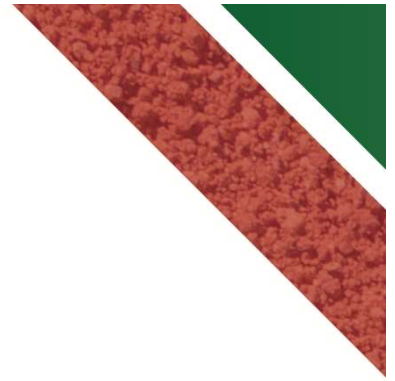
The Bullpen Configurations from The Perfect Mound are nothing short of amazing. Getting the work in at our level is paramount, and bullpens deliver rain or shine with no worry at all. Every program should have this product.

MIK AOKI
*Head Coach | Morehead State
Former Head Coach | Notre Dame*



YOUR SPECS - ENDLESS OPTIONS...





***THANK YOU FOR YOUR INTEREST IN THE PERFECT MOUND
FOR PRICING AND HOW TO ORDER, PLEASE VISIT***



**THE PERFECT MOUND
2041 GOOSE LAKE RD. SUITE 2A
SAUGET, IL - 62206
618.215.4135**

- THE PERFECT MOUND ALL RIGHTS RESERVED -

