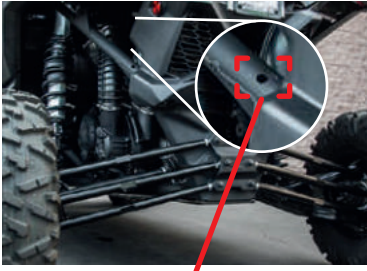
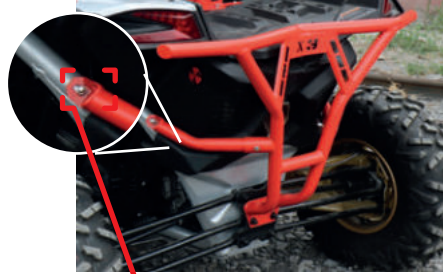


**4** Align the Perforation of the arm with the frame's original perforation of the vehicle (as it is shown in the image). Use a 3/8 x 3 1/2" screw with washer and nuts



Use the frame's original perforation.



3/8 x 3 1/2" screw

**5** Set the Rear Bumper in order that it will be aligned in the Right position and tighten the bolts of the Rear Suspension Plate of the vehicle and the screws of the side arms of the Rear Bumper.



## STEEL REAR BUMPER INSTALLATION MANUAL

For technical support , please write us to:  
info@afxmotorsports.com or call us at:  
Ph. 956-242-6521

**HAVE FUN AND A SAFE RIDE!**



www.afxmotorsports.com

4610 Modern Lane, Laredo, TX 78041 Ph. 956-242-6521

**THIS PRODUCT IS FOR OFF ROAD USE ONLY**

## CAN AM X3

## DEF036



# THANK YOU!

## FOR PURCHASING AT AFX MOTORSPORTS



### STEEL REAR BUMPER FOR CAN AM X3

## HOW TO INSTALL

Pieces included:



■ Rear Bumper

### Hardware:

- (2x) 3/8" x 3 1/2" Bolts with nuts.
- (2x) 3/8" x 2 1/2" Bolts with nuts.
- (4x) Washer 3/8"

### Tools needed (Not included):

- 3/4" Wrench.
- 7/32" Allen Key.
- 9/16" or 14mm Combination Wrench.

#### Liability Statement

AFX Motorsports products are designed to best fit user's ATV/UTV under stock conditions. Adding, modifying, or fabricating any factory or aftermarket parts will void any warranty provided by AFX Motorsports and is not recommended. AFX Motorsports products could interfere with other aftermarket accessories. If user has aftermarket products on machine, contact AFX Motorsports to verify that they will work together. Although AFX Motorsports has thousands of satisfied customers, user should be aware that installing bumpers, rock sliders, spare tire carriers, etc. will change the ride of machine and may increase maintenance and part wear. Operating any off-road machine while, or after, consuming alcohol and/or drugs increases risk of bodily harm or death. No warranty or representation is made as to this product's ability to protect user from severe injury or death. AFX Motorsports urges operators and occupants to wear a helmet and appropriate riding gear at all times. By purchasing and installing AFX Motorsports products, user agrees that should damages occur, AFX Motorsports will not be held responsible for loss of time, use, labor fees, replacement parts, or freight charges. AFX Motorsports, nor any 3rd party, will not be held responsible for any direct, indirect, incidental, special, or consequential damages that result from any product purchased from AFX Motorsports. The total liability of seller to user for all damages, losses, and causes of action, if any, shall not exceed the total purchase price paid for the product that gave rise to the claim. AFX Motorsports will warranty only parts provided by AFX Motorsports. Any damage or problems with OEM housings, bearings, seals, or other manufacturers' products will not be covered by AFX Motorsports. AFX Motorsports parts and products are not warranted if item was not installed properly, misused, or modified.

1

Remove the 2 central nuts of the screws located on the rear suspension plate of the vehicle.



Remove the 2 central nuts

2

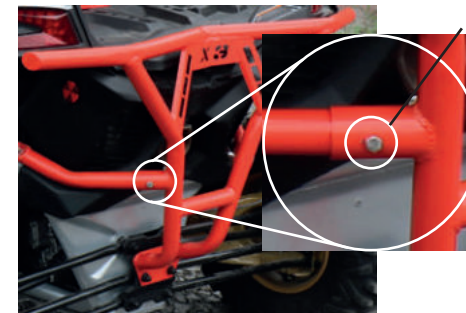
Place the rear bumper in order that the lower plate of the bumper would be in position with the 2 central screws of the rear suspension. Then place the 2 nuts again in the 2 central screws of the rear suspension plate of the vehicle. Do not tight them yet.



Original nuts

3

Install one of the two arms of the Rear Bumper align the perforation (as it shown in the image). Use a 3/8" x 2 1/2" screw with washer and nut. Do not tighten yet. Repeat this step in te other side.



3/8" x 2 1/2" Screw