

PULLMAN[®]

QUALITY CLEANING SOLUTIONS



IDEAL FOR:

- Shops
- Garages
- Motels & Hotels
- Restaurants & Cafes

CB80

**80L WET & DRY
VACUUM CLEANER**

3000W (15AMP)



IMPORTANT

Always switch off the cleaner and remove the plug from the electricity power supply before cleaning your appliance, when not in use, or attempting any maintenance task. The cleaner must only be connected to an AC power supply at the voltage shown on the rating label. This cleaner should only be used for its intended purpose as described in this instruction manual.

SAFETY PRECAUTIONS AND WARNING:

WHEN USING YOUR VACUUM CLEANER BASIC PRECAUTIONS SHOULD ALWAYS BE OBSERVED, INCLUDING THE FOLLOWING;

1. This appliance is **not** intended for use by persons (including children) with reduced physical, sensory or mental capabilities, or lack of experience and knowledge unless they have been given supervision or instruction concerning the use of the appliance by a person responsible for their safety.
2. Children should be supervised to ensure that they **do not** play with the appliance.
3. To prevent electrical shock **do not** immerse the appliance, power cord or power plug into water or other liquids.
4. To prevent electrical shock **do not** use the vacuum cleaner outdoors.
5. Always check the power cord before use. The power cord and the plug should be in a good condition and must not be damaged. If the power cord is damaged or defective, it must be replaced by the manufacturer, its service agent, or similarly qualified persons in order to avoid a hazard.
6. **Do not** unplug by pulling on the power cord. To unplug, grasp the plug not the power cord. Use only Australian and New Zealand electrical safety approved extension cords.
7. **Do not** pull or carry the appliance by the power cable, use the power cable as a handle or pull the power cable around sharp edges or corners. Avoid running the appliance over the power cable.
8. Ensure the appliance is switched off before unplugging.
9. **Do not** handle or operate the appliance with wet hands, and follow electrical safety precautions at all times.
10. Extreme caution should be exercised when using the appliance on stairs.
11. **Do not** attempt to change the attachments while the appliance is plugged in to mains power supply. Switch off and remove plug from mains power supply. Use only manufacturer's recommended accessories.
12. **Do not** operate the vacuum cleaner too close to heaters, radiators and other hot surfaces.
13. **Do not** use the appliance to pick up hot water/ liquids, flammable items or combustible liquids (i.e. petrol, hot ashes cigarettes, matches, explosive materials or anything burning) or use in areas where such substances and items may be present.
14. **Do not** use the appliance to pick up toxic materials (i.e. chlorine bleach, ammonia).
15. Ensure the appliance is disconnected from the main power supply before connecting the hose to the unit.
16. **Do not** operate or use the appliance without dust bag and/or filters in place while dry vacuum cleaning.
17. Before vacuuming, remove any large or sharp objects from the floor or cleaning surface in order to prevent damage to the filter.

18. If the hose inlet, floor tool, or the 2 piece metal tube is blocked, switch off the cleaner straight away and disconnect from the main power. Clear the blockage object before attempting to start the vacuum cleaner again.
19. **Do not** leave the appliance unattended when it is connected to a mains power supply.
20. Before carrying out any maintenance service or cleaning the filters, always switch off the vacuum cleaner and disconnect the plug from the power supply.
21. Keep the ends of the hose, telescopic tube and other openings away from your face and body.
22. **Do not** use the vacuum cleaner if it is damaged or breaks down. Check the electrical cable regularly for defects. If cables, hose, electrical contacts and/or metal tubes are damaged, have them replaced immediately.
23. **Never** clean the vacuum cleaner or any of the electrical parts with water or liquid cleaners.
24. **Never** attempt to make any electrical modifications to the vacuum cleaner.
25. Always store the appliance indoors in a cool and dry place.
26. Damage caused by improper use or by **not** observing the instructions in this manual will void the warranty.
27. Only plug the machine into a 15amp power socket.

BEFORE YOU BEGIN



1. **Do not** operate the vacuum cleaner too close to heaters, radiators, and other hot surfaces.



2. Before inserting the plug into the wall, make sure your hand is dry.



3. Before turning on the vacuum cleaner, remove any large or sharp objects from the floor or cleaning surface in order to prevent damage to the filter.



4. When you want to pull the plug from the wall, **do not** use the power cable, gently pull the plug from the power socket.

5. If the hose inlet or telescopic chrome tube are blocked, you should switch off the cleaner straight away and remove from mains power. Clear the blockage before attempting to start the vacuum cleaner again.

This machine is equipped with a cord and plug. In the event that either of these parts get damaged, it must be repaired by a qualified technician.

KNOW YOUR PRODUCT

1. Lid Handle
2. On/Off Switch
3. Tank
4. Hose Inlet
5. Hose
6. Castor Wheels
7. Drain Hose
8. Cord Holder
9. Connection Latches
10. 2 Piece Metal Tube
11. Carry Handles
12. Dry Pick Up Tool (hard floor only)
13. Wet Pick Up Tool
14. Crevice Tool
15. Dusting Brush

Technical Information

Model: CB80
 240V ~ 50Hz
 3000W



12.



13.



14.



15.

ASSEMBLY (WITH HOSE)

Part 1



1. Connect the 2-piece metal tube together.



2. Connect the handle on the hose to the tube.



3. Connect the tube to the desired cleaning accessory.



4. Connect the hose to the Pullman CB80.

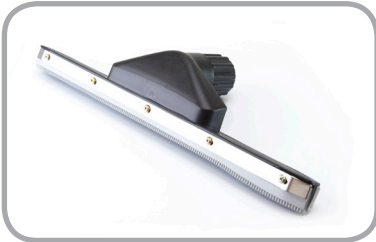
ACCESSORIES



Dry Pick Up Floor Tool

The dry pick up floor tool is ideal for vacuuming hard floors.

Do not use the dry pick up floor tool on carpets.



Wet Pick Up Floor Tool

The wet pick-up tool is ideal for wet applications.



Crevice Tool

Dusting Brush

Fitting dusting brush and crevice tool

To fit the accessories to the 2 piece metal tube, gently insert the tube into the top of the dusting brush or crevice tool.

Dusting Brush – ideal for cleaning furniture, curtains and upholstery

Crevice Tool – ideal for cleaning in tight spaces

OPERATION

IMPORTANT: DISCONNECT THE CLEANER BEFORE CHANGING ACCESSORIES OR TO EMPTY THE CLEANER.



Before turning on the Pullman CB80 Vacuum Cleaner, please check that the Drain Hose is secure to the tank and the cap is fully closed.

Dry Vacuum Cleaning



1. Release the connection latches to remove the canister lid.



2. Ensure the cloth filter bag is always installed before dry use.



3. Turn the switch of the vacuum cleaner to position "1".
4. You can determine the suction by using either 1, 2 or 3 motors. Each motor is controlled by a switch located on the front.
5. Empty the dust tank or dust bag when it's full or after each use.
6. The cloth filter also needs to be cleaned accordingly.

OPERATION

Wet Vacuum Cleaning



1. Ensure the cloth filter is removed before the cleaner is used.



2. Turn the switch of the vacuum cleaner to position "I".
3. You can determine the suction by using either 1, 2 or 3 motors. Each motor is controlled by a switch located on the front.



4. Empty the tank by the Drain Hose .
5. Empty the tank after each use. Avoid leaving dust or dirty water in the tank.
6. Wipe the machine inside and out from time to time, using only lukewarm water. Before use always examine the power cable for cuts and/or damage.
7. Wet pick up accessories should be washed periodically.

MAINTENANCE

ATTENTION: DISCONNECT FROM MAINS POWER SUPPLY BEFORE DOING ANY MAINTENANCE WORK. IF PROPER CARE IS TAKEN TO MAINTAIN YOUR CLEANER, MOTOR MAINTENANCE IS UNNECESSARY. HOWEVER WE RECOMMEND THAT YOUR CLEANER IS SERVICED ONCE A YEAR.



1. Release the connection latches to remove the canister lid.
2. Remove the cloth filter.
3. The cloth filter bag can be washed under luke warm water.
4. Dry by airing for at least 24 hours.



SPECIFICATIONS

Watts: 3000W

Capacity: 80L

Power Cable Length: 8m

Net Weight: 26.5kg

TROUBLESHOOTING

TROUBLE	POSSIBLE CAUSE	REMEDY
Suction weakens or cleaner runs hot	Clogged filter	Brush dirt from filter. If condition continues, change filter.
	Air leak	Check all fittings for tight fit (floor tool, hoses, etc.). Check that tank cover is sealed properly.
	Obstruction in hose or floor tool	Check floor tool, hose, etc. for obstructions, and remove if present.
Misting in the exhaust air	Saturated filter	Replace saturated filter and the filter mesh.

CUSTOMER CARE

For customer service or product enquiries please contact 1800 815 270 (AU) or 0800 282 288 (NZ)

PRODUCT NUMBER	PRODUCT DESCRIPTION
33500316	Small Castor Wheels
33500315	Rear Wheels
31150055	Squeegee Replacement
33200523	On/Off Switch
31110125	Combination Floor Tool (OPTIONAL)
31110126	Hard Floor Squeegee Tool
31150014	Hard Floor Tool
31220267	Hose Assembly
31300392	2-Piece Chrome Tube
31130037	Dusting Brush
31120070	Crevice Tool
33701473	Float Cage
33400126	Cloth Filter
33101028	Pipe, Drain Assembly
33101026	Trolley Base

Conditions of warranty



Your Pullman cleaner has a one year parts and labour warranty against product defects and failures when the product is used in accordance with the terms and conditions of this warranty statement.

The cleaner must be operated in accordance with these instructions. This cleaner is not designed for the collection of vitreous building material including particle board, construction products and similar products such as wood/fibres, cement, fillers, fibre glass etc or excessive or frequent sand. The infrequent pick-up of these materials in these circumstances may be harmful to your cleaner and may void the manufacturer's warranty.

Accessories and consumables including dust bags and filters, unless defective in manufacture, are not subject to this warranty. In order to prolong the life of accessories and consumables, regular care and maintenance is recommended.

When properly used and cared for, your cleaner will render excellent service; refer to the instruction manual for further details, as misuse or failure to follow the instructions makes this warranty void. In the event of service or advice being needed, please contact Electrical Home-Aids Pty Ltd, ABN 62 007 539 577, Ground Level, Building 3 Brandon Business Park, 530 Springvale Rd, Glen Waverley, VIC 3150. Customer Care: 1800 815 270.

The decision to repair or replace the cleaner is at the sole discretion of Electrical Home-Aids Pty Ltd. If International Cleaning Solutions Pty Ltd decide

to repair or replace the cleaner, it will do so at its own cost.

Electrical Home-Aids Pty Ltd is unable to accept responsibility under this warranty for any repair work not carried out by an authorised Electrical Home-Aids Service Agent or from the use of non-genuine parts. If any part is no longer available or manufactured, International Cleaning Solutions will replace it with a genuine functional replacement part. This warranty does not apply to the cost of replacing any parts of the product due to normal wear and tear, alterations, improper installation, physical abuse, misuse or accidental damage. Any transportation costs involved in the repair of defective parts shall be borne by the claimant.

If proof of purchase cannot be provided at the time of a warranty claim or service, any work carried out on the cleaner is chargeable. The repair or replacement of the cleaner under this warranty does not extend the original period of warranty.

The benefits conferred by this warranty are in addition to all other rights and remedies in respect of the product as outlined under the Competition and Consumer Act and other State and Territory laws.

"Our goods come with guarantees that cannot be excluded in the Australian Consumer Law. You are entitled to a replacement or refund for a major failure and for compensation for any other reasonably foreseeable loss or damage. You are also entitled to have the goods repaired or replaced if the goods fail to be of acceptable quality and the failure does not amount to a major failure."



Electrical Home-Aids Pty. Ltd.

ABN 62 007 539 577

Ground Level, Building 3, Brandon Business Park
530 Springvale Road, Glen Waverley, Victoria 3150

Pullman is a registered trademark.

Contact Electrical Home-Aids Pty. Ltd. for your nearest authorised service centre on 1800 815 270 (AU) or 0800 282 288 (NZ).

customerservice@godfreys.com.au