

f @Gyrootboard | y @Gyroor | i @Gyrootboard | t @Gyrootboard

www.gyroor.com

GYROOR[®]



USER MANUAL

Folding Electric Bike **C2 Pro**

Scan GYROOR Twitter QR
Code to Get More Informations





Scan GYROOR Twitter QR Code to Get More Informations

*The manufacturer reserves the right to make changes to the product,
and update this manual at any time Visit www.gyroor.com to
download the latest user manual.*

www.gyroor.com

Table of Content

1. What is in the box	1	6. Care and maintenance	11
2. How to assemble	2	6.1 Storage	
3. Features and Specifications	5	6.2 Cleaning	
3.1 Product serial number		6.3 Inflation and tire replacement	
3.2 Dimension		7. Safety warnings	12
3.3 Specifications		8. How to fold bike	13
3.4 Product composition		9. Warranty	16
3.5 Function		9.1 Guarantees Standard	
4. Charging the battery	9	9.2 Limited product warranty	
4.1 How to charge		9.3 Warranty policy	
4.2 Cautions when charging		10. Contact	19
5. Riding	10		
5.1 Before riding			
5.2 Cautions when riding			

1. What is in the box

The foldable electric bike (electric scooter) leaves factory with the following components. Please check after opening the box. If there are any missing, please contact us directly. Our after-sales support email is: help@gyroor.com

Model	C2 Pro	
Number	Name	Quantity
1	Vehicle	1 pc
2	Charger	1 pc
3	User Manual	1 pc
4	Pedal lever*2	1 pair
5	4mm Hexagonal Spoon	1 pc

The use of unauthorized parts and incorrect assembly can result in damage. For the sake of personal safety and vehicle quality, the vehicle must be properly unfolded and folded in accordance with the instructions, using components supplied by the original manufacturer.

Please don't try to ride on a electric bike(electric scooter) that is not properly and effectively installed.

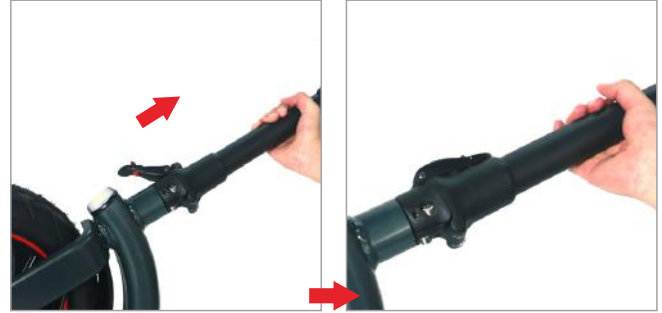
Do not disassemble or refit electric bike(electric scooter) without permission, otherwise it may cause irreversible damage to the vehicle and may cause personal injury.

2. How to assemble

This is the video steps:<https://bit.ly/3jL9zTL>



1. Please spread head tube.



2. Please close the quick release.



3. Please pull up the red sliding cap of rear wheel quick release and rotate the quick release downward.



4. Unfold the front wheel quick release.



5. Loosen the nut counterclockwise into position.

6. Please hold the head tube and adjust the front wheel to balance point. Then rotate the front wheel quick release up.



7. Please turn the front wheels to the left and keep the front wheels straight.



8. Please rotate the front wheel quick release downward to hold front wheel.



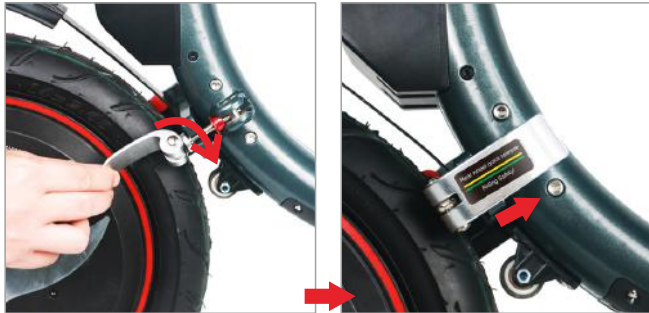
9. Please tighten the nut clockwise into position and close the lid to hold the front wheel.



10. Please adjust the rear wheel to balance point and pull up the red rear wheel screw pin then turn left, then revolving and unfolding the rear wheel.



11. Please pull up the red sliding cap of rear wheel quick release into position and rotate the quick release downward.



12. Tighten the quick release into position, then close the lid.



13. Please install the saddle and tighten four screws.

3. Feature and Specifications

The electric bike(electric scooter) is a compact, efficient and economical personal walking tool. Its styling has a trendy sense of science and technology, portable folding design,extremely light structure design, powerful lithium battery power, to provide you with a pleasant driving experience.

3.1 Product Dimension



3.2 Specifications

Name	Parameter values
Waterproof grade	IPX4
Speed	6-19mph
Load	265lbs
Distance	20miles
Max. Slope	10°
Charger time	5.5h
Braking distance	8m (Dry state)
Braking mode	Disc Brake + Electronic Brake
Age range	12-50 years old

Height range	120-190mm
working temperature	-10~40°C
Storage temperature	-20~45°C
Net weight	47LBS
Gross weight	50LBS
Battery Capacity	10AH
Rated Voltage	36V
Charging Voltage	42V DC
Input Voltage	100-240V AC

3.3 Product composition



3.4 Function

1) Turn on/off:

Press the button 3-4 seconds to turn it on/off, the Automatic shutdown time: 10 minutes without operation

2) Set the speed:

When the power is on, single click the power switch to adjust the speed between high, medium and low gear.
low gear 10km/h, medium gear 20km/h, high gear 30km/h.

3) Cruise control:

When it is running, keep the same speed about 6-7 seconds enter cruise mode;

Press the speed control button or brake gently to cancel the cruise mode;

When speed over 25km/h, can not set cruise mode.

4) Front light & Tail light:

When the power is on, double-click the power switch to turn on the front light and tail light, double-click again to turn off the front light and tail light; the tail light flash when braking.

5) Switch km/h & miles/h:

When the power is on, three-click the power switch to change between km/h & miles/h.

4. Charging the battery

4.1 How to charge

First step : Plug the charger into power socket then into bike charge port.

Second step: Red light indicate battery is charging

Green light indicate charging is complete

Last step: Don't forget to plug the dustproof cap back after charging complete

4.2 Cautions when charging

Please charge for more than 5 hours before first use.

Please charge once a month or 2 days after each ride to maximize battery life and avoid battery to be over-discharged.

Please only use the included charger and cable supplied by the original manufacturer In order to avoid battery overcharge.

Please make sure the charger cable is properly connected

Please be sure to charge in a dry environment. Never allow the charger or cable to come into contact with water as this may result in electric shock. Never touch with wet hands. Unplug the power cord immediately if any problems occur during charging.

Please do not let the charger or cable to touch sharp or hot items.

Please do not use the charger to avoid further damage, and contact for replacement if the charger or cable is damaged

Do not repair the battery, charger or cable by yourself. If you have any questions, please contact us to serve you.

5.Riding

5.1 Before riding

please make sure following items:

Make sure that the parts of the bike are securely assembled and undamaged.

Make sure the brakes are functioning properly.

Make sure the folding mechanism is locked.

Make sure you battery have enough power.

Make sure the tires are intact.

Make sure the handlebars are secure and tighten without looseness.

Please have an person assists you if it is the first time you learn to ride. This person needs to be proficient in operating electric vehicle.

5.2 Cautions when riding

Please do not ride on a smooth, slippery road.

Always wear a safety helmet and protective gear to avoid injury.

Please note that riding on rainy days should increase the braking distance.

Please don't use this product in a day with bad weather such as in rain, snow, or ice.

Do not exceed 18° when going up and down, and do not accelerate or decelerate on the slope.

Pay attention to obstacles and road skidding; do not ride on grass or pebbles.

The wading depth should not exceed 30mm.

It is forbidden to ride the stairs up and down.

It is forbidden to drive on the motorway.

The bike is a single-passenger tool that prohibits multiple people from riding at the same time.

Please confirm that the battery is fully charged before use and the tire is inflated normally.

The bike is only used for daily travel, and should not be used for extreme sports or dangerous riding meth.

6.Care and maintenance

6.1 Storage

- Avoid storing electric bike(electric scooter) in direct sunlight (even in yourtrunk) because the temperature of the body and battery can be as high as 50 degrees Celsius after a period of time,resulting in damage to battery function and product life.
- Avoid storing electric bike(electric scooter) in humid environments.
- When the electric bike(electric scooter) is not in use, the battery will also discharge slowly and automatically. Battery power should be monitored at least every three months and charged in time to ensure that the battery has sufficient power. Avoid irreparable losses caused by long-term storage of batteries without electricity (e.g. deep discharge of batteries)
- In winter, batteries may lose power faster because of low temperatures.
- The unreasonable storage will lead to the life of lithium batteries or other hidden dangers. Please store the electric vehicle in a dry, humid place indoors. If you don't use electric bike(electric scooter) for a long time, please fill the battery and charge it at least once a month.
- If you need to store electric bike(electric scooter) for a long time, please fully charge it.

6.2 Cleaning

- Make sure that the car body shuts down before cleaning, then pull out the charging wire and close the charging port. During cleaning, be careful not to let water flow into the charging port.
- Use soapy water or clean water and soft cloth to wipe the shell of the electric vehicle, and prohibit the use of high-pressure water guns to wash the electric vehicle.
- The waterproof and dust-proof grade of electric bike(electric scooter) is IP54, that is, anti-splash and dust-proof. Therefore, the electric vehicle should not be immersed in water, which will lead to permanent damage to the electric vehicle.

6.3 Inflation and tire replacement

When there is insufficient air pressure in the tire or when the pressure of the two tires is different, please inflate them in time to ensure that the pressure of the two tires is the same. The default factory tire pressure of electric bike(electric scooter) is 2.8 Bar for front wheel and 2.5 Bar for rear wheel.

If the electric vehicle needs to be replaced due to tire burst or other reasons, please contact after-sales department for repair (or repair at the bicycle repair shop).

7.Safety warning

For your safety and good driving experience, we ask you to use the product strictly according to the following requirements:

1. Be sure to read carefully and fully understand the electric bike User Manual before use it.
2. Do not let people who are not 14 to 50 years to use it.
3. Pregnant women and persons who are physically or mentally unsuitable are prohibited from using them.
4. It is forbidden for two or more adults to ride one bicycle at the same time. It is also forbidden to ride with children or heavy loads.
5. Do not refit and repair electric bike privately or by non-manufacturer authorized personnel. If there are any problems with the product, please contact the manufacturer after-sales immediately.
6. Please use the electric vehicle after ensuring that there is no looseness, damage, malfunction and other abnormal conditions.
7. Before charging, make sure the outlet is dry, trouble-free and free of foreign matter. When charging, be sure to insert the correct socket and avoid children and pets contacting, staying away from flammable items.
8. The batteries must be stored in an environment of -20 ° C to 45 ° C. Do not put it in an environment where the temperature is higher than 45 degrees .
9. If the battery leaks (including damage, odor, smoke or overheating) and other abnormalities, please immediately stop using and avoid contacting with other objects.
10. Do not attempt to open or disassemble the battery and any abnormal operation or use of the battery.
11. Full-charged electric bike (display screen shows full power), due to different battery status and storage environment, standby time is up to 180 days; Non-full-charged electric bike (display screen shows 1 grid power), standby time is up to 30 days, please pay attention to standby time to prevent irreparable damage to the battery caused by not charging in time.
12. Do not wear shoes that are not suitable for driving, such as high-heeled shoes, too-loose clothes . Wear professional protective gear when using.
13. It is forbidden to ride electric bike on rainy weather and other wet roads, because when the road is wet and slippery, the grip of tires decreases, the braking distance increases, and it is easy to slip and cause accidents such as electric vehicles out of control.
14. It is forbidden to use electric bike in bad weather, low visibility and poor light. Do not use in extreme fatigue.
15. Do not use in stairs, elevators or through revolving doors which are not suitable for road conditions and environments.

16. Do not turn at high speed, and do not brake suddenly on a smoother road. The above-mentioned behavior can easily lead to skidding and other out-of-control situations.

17. Please drive on non-motorized lanes, prohibit driving in inappropriate places such as motorized lanes, and strictly abide by laws and regulations such as traffic rules. When approaching or passing intersections, motor lanes, turning points, doors and other places, please pay attention to deceleration and avoidance, but also have a sense of defense, pay attention to the traffic vehicles and pedestrians may cause dangerous behavior.

18. Do not answer the phone or do any activities or actions that may distract your attention while driving electric bike(electric scooter) , so that you can focus on monitoring the external environment at any time.

8.How to fold bike

This is the video steps:<https://bit.ly/3zKpwz3>



1.Fold the kickstand



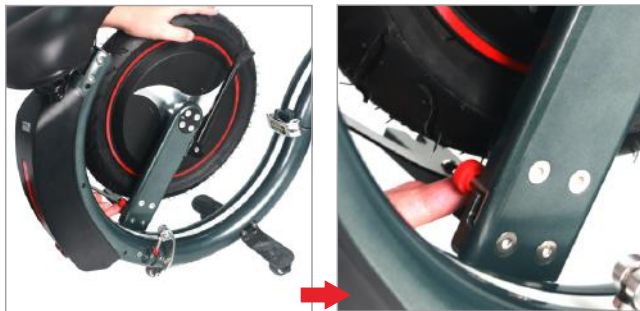
2.Open the lid of rear wheel quick release



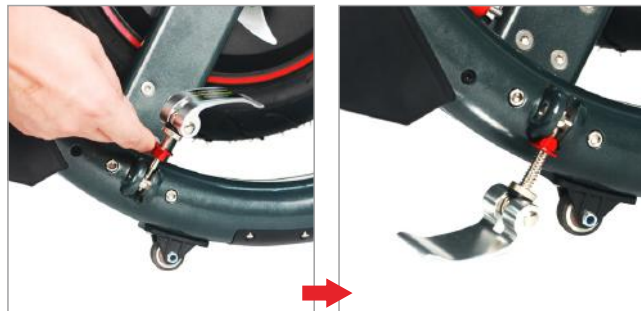
3. Pull down the red sliding cap of rear wheel quick release and rotate the quick release upward.



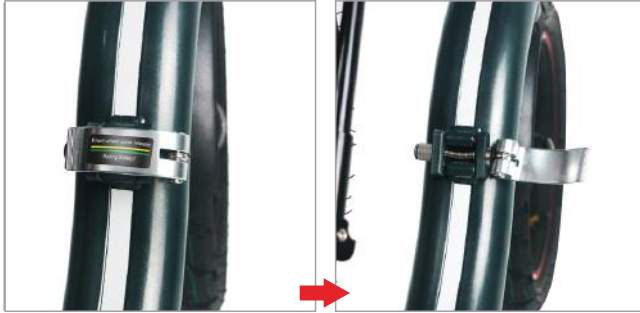
4. Fold the rear wheel



5. Adjust the rear wheel to balance point then turn the red rear wheel screw pin to right so that it holds the rear wheel.



6. Pull up the red sliding cap of rear wheel quick release and rotate quick release downward.



7. Open the lid of front wheel quick release.



8. Please unscrew the nut in place counterclockwise and adjust the front wheel to balance point, then rotate the front wheel quick release upward.



9. Please fold front wheel.



10. Please rotate front wheel quick release downward and close the lid to hold front wheel.

9. Warranty

This folding version of electric bike core parts warranty for 1 year or cumulative mileage of 2000 kilometers, the two are based on the first period or mileage (the core components include the motor and frame of the electric vehicle), other electric vehicle parts warranty should be implemented in accordance with the Electric Vehicle Guarantees Standard".

9. Electric Vehicle Guarantees Standard

	PRODUCT	DETAILS	WARRANTY PERIOD
Frame	Frame, handlebar	Desoldering, fracture naturally	12 Months
	Front wheel	Deformation, fracture naturally, etc. due to poor manufacturing quality problems	12 Months
	Painted parts, plated parts	Paint peeling, blistering, cracking for large area	6 Months
	Seat, foot support	Deformation, fracture naturally, etc. due to poor manufacturing quality	6 Months
	Plastic, inside tire, brake wire, foot pedal	Damage easily	Not including

Component	Charger, light, switch, brake	Performance failure due to poor manufacturing and cannot be repaired	6 months
	Controller, main cable	Performance failure due to poor manufacturing and cannot be repaired	12 months
Motor	Motor	Damaged; demagnetization	12 months
	Hall, bearing	Hall damaged; bearing with abnormal sound	6 months
Battery	DC charger; USB charger	Damage easily	Not including
	Battery	<p>The range of environment temperature of Lithium battery charging is 1 °C-34 °C, ambient temperature range -10 ° C-45 ° C. At low temperatures, lithium battery capacity will have varying degrees of decline, the specific reference level is: The capacity is 68% when -10° C. The capacity is 85% when 0° C. The capacity is 100% when 25° C.</p> <p>The warranty includes these situation, abnormal voltage, unable to charge, less than 60% of capacity detected by discharge meter, when the vehicle is not affected by external force, (not including the battery is not protected according to the user manual, and the battery is not periodically charged during storage.)</p>	6 months

9.2 LIMITED PRODUCT WARRANTY

The following conditions are not covered by the warranty. Customers should afford the related costs

- (1)The accumulated mileage over 2000 kilometers;
- (2)Any damage caused by failure to use, maintain and adjust as required by the User Manual;
- (3)Serial number is deleted or is changed;
- (4)Serial number in the warranty card is not matched the product;
- (5)Dismantled or repaired with unauthorized person;
- (6)Beyond normal use conditions, using this product deliberately to cause malfunction or damage;
- (7)Damage caused by overloading, falling, or other extreme exercises;
- (8)Other failures or damages not caused by this product itself design, manufacturing and quality;
- (9)Damage caused by irresistible factors;
- (10)Exceeding the expiration date;
- (11)Warranty card lost;

If any situation mentioned above happens, customers should afford the costs of repairs.

9.3 Warranty policy

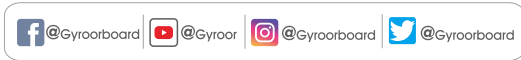
1. Customers can seek technical support from after-sales assistance through the manufacturer, or they can directly contact the dealer at the place of purchase to assist in the after-sales service process.
2. Within 3 working days after receiving the customer's faulty product, our company will report to the customer with the product failure analysis, fault responsibility, maintenance cost and estimated repair completion time.
3. After the customer has no objection to the cause of the fault, the fault responsibility, the repair cost and the repair completion time, the company will begin to repair the product.

10.Contact

Contact us if you experience issues relating to riding, maintenance and safety, or errors/faults with your C2Pro.

Messenger: Gyroorboard

E-mail Service: help@gyroor.com



www.gyroor.com

Please offer your order id when contacting Gyroor.



Scan GYROOR Twitter QR
Code to Get More Informations