



LED Corn Lights Instruction Guide

WARNING

1. Please disconnect power prior to installation
2. This model is not suitable for dimming, electronic switch, emergency exit lights, or remote controlled system.
3. Do not use if moisture higher than 85%.
4. To use in damp locations, please use our IP64 Rated LED Corn Light
5. Do not touch the lamp body when on, or serious injuries may occur.
6. Please turn off the Corn Light if you encounter something unusual while operating. Please contact HTM Lighting Solutions at +1 (813) 649-8899
7. Do not stare directly at the light while operating.
8. Added weight of the device may cause instability of a free-standing portable luminaire. Use only with a portable luminaire that is provided with a shade. This lamp employs light emitting diode technology and unlike tungsten-halogen lamps does not require a ballast.
9. LED Corn Lights are suitable for enclosed luminaires (Check SKU#)
10. For lamps with a weight significantly higher than the lamps they are replacing, special care and attention should be drawn to the fact that the increased weight may reduce the mechanical stability of certain luminaires and lampholders.

Customer Support

If you may have any questions, or concerns, please call or email our lighting specialists at:



T: +1 (813) 649-8899



E: sales@htm-lighting.com



To help protect the environment, please dispose of the product properly when it has reached the end of its use. Do not dispose of in household waste. Information on collection points and their opening hours can be obtained from your local municipalities.



LED Corn Lights Instruction Guide

Model



CLW-HO27W-5K



CLW-HO36W-5K



CLW-HO54W-5K



HTM-CLW-LED-80WB1



HTM-CLW-LED-120WB1



HTM-CLW-LED-150WB1

Table 1

Models	Watts	HID Equivalent	Input Voltage	Lumens
CLW-HO27W-5K	27W	100W	100-277VAC	3,645 lm
CLW-HO36W-5K	36W	150W	100-277VAC	4,860 lm
CLW-HO54W-5K	54W	200W	100-277VAC	7,290 lm
HTM-CLW-LED-80WB1	80W	250W	100-277VAC	9,400 lm
HTM-CLW-LED100WA1	100W	350W	100-277VAC	11,500 lm
HTM-CLW-LED-120WB1	120W	400W	100-277VAC	13,500 lm
HTM-CLW-LED-150WB1	150W	700W	100-277VAC	17,400 lm



LED Corn Lights Instruction Guide



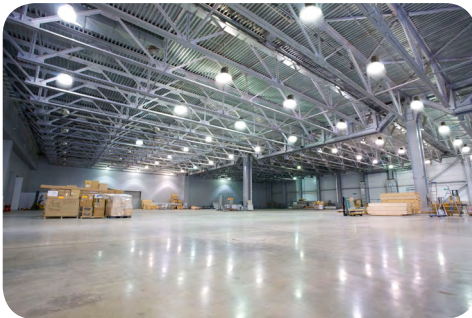
LED Corn Lights Instruction Guide

Product Features

- Up to 75% More Efficient than Metal Halide / HPS Equivalent
- 360° Beam Angle!
- Longer life and lower maintenance cost
- Active Sunnon Fan heat exchange cooling
- Mercury / Lead / UV / IR free
- Instant on, no warm up or start time
- Some models suitable for enclosed luminaires (Please Check SKU#)

Application

Widely used in high bay, and low bay fixtures, wallpacks, gas stations canopy kits, post top lamps, street lights, warehouses, supermarkets, parking garages, schools, and shipping centers among many other applications.



Installation

Warning: Please make sure the power is off before installation.

1. Disconnect Power Prior to Installation
2. Unscrew the MHL / HPS / CFL Bulb
3. Remove & Bypass the Ballast / Capacitor & Ignitor as per Figure (6)
4. Refer to Figure (1) & Figure (2) to identify the Line (L), and the Neutral (N)
5. For Corn Lights With Internal Power Supply, Follow Instructions On Figure (6). Bypass the ballast, and rewire the Line (Black) & Neutral (White) Wire
6. For Corn Lights With External Power Supply, Follow Instructions On Figure (5) Remove the ballast, and replace it with the provided Meanwell Power Supply from the Corn Light
7. After rewiring the E39 or E26 Socket as per Figure (6) - LED (In Driver), verify that everything is attached, and wired correctly
8. You may now screw in your new LED Corn Light, turn on the Power, and Enjoy your savings

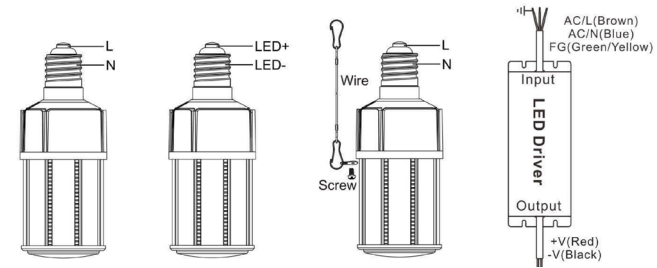


Figure (1) Figure (2) Figure (3) Figure (4)

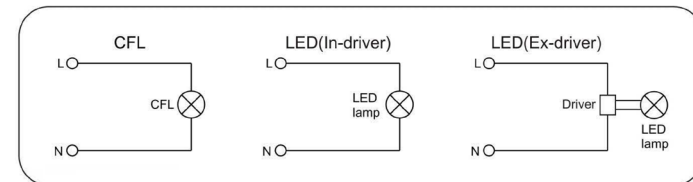


Figure (5)

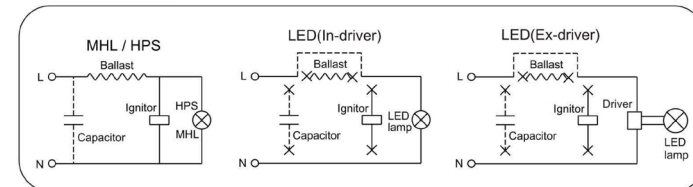


Figure (6)