



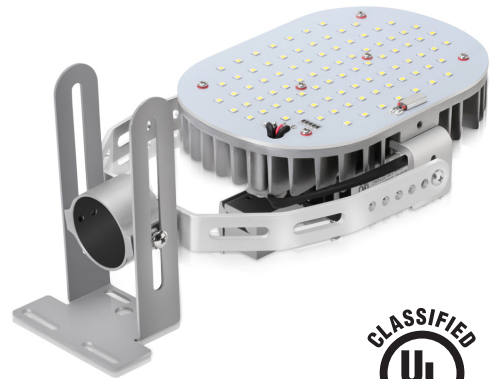
TECHNICAL DATA SHEET

Project Name Catalog #
 Comments Date

LED Retrofit Kits | 45W/65W/80W/120W/150W/200W/300W/320W

Benefits **RKXUS-LED-XXXW**

- Up to 75% More Efficient than HID Equivalent
- Longer life and lower maintenance cost
- Active fan heat exchange cooling
- Mercury and lead free, as well as UV and IR free
- Instant on, no warm up or start time
- Cree XTE / Philips SMD Chip: High Lumen Output
- Meanwell HLG Driver w/ temp. control system to reduce heat output
- 5 Years HTM Lighting Warranty



Specifications

Equivalent	150-1000 Watts HID
Average Rated Life	50,000+ Hours
Housing	Die Cast Aluminum
Base	Custom Mounting System For HID Fixtures
Power	100-277 VAC (Higher Upon Demand)
Dimmable	Non-Dimmable
Beam	110°
Color (K)	3000K-5700K



Application Notes

1. High Output Retrofit Kit For Outdoor-Pole/Arm Mounted Area & Roadway Luminaires
2. Operating temperature range between -20°C and 45°C (-4°F and 113°F)
3. Storage temperature range between -30°C and 80°C (-22°F and 176°F)
4. Not for use with emergency light fixtures or exit lights
5. Suitable for indoor/damp locations and sheltered outdoor use (IP40)
6. Requires HD ballast bypass, see htm-lighting.com for instructions



This device complies with Part 15 of the FCC Rules and has been tested and found to comply with the limits for a Class B digital device



TECHNICAL DATA SHEET

Project Name Catalog #
 Comments Date

LED Retrofit Kits | 45W/65W/80W/120W/150W/200W/300W/320W

Application Info RKNUS-LED-XXXW



Parking Lot



Pathway fixture



Wall Pack Fixture



Street fixture



Cobra Fixture

Ordering Info

Part #	Watts	Replaces	Voltage	CCT	Lumens	Length	Width	Height
HTM-RKNUS-LED-45WV1	45W	150W HID	100-277VAC	3000-5700K	4,800	4.7" (Round)	4.7" (Round)	1.7"
HTM-RKNUS-LED-65WV1	65W	200W HID	100-277VAC	3000-5700K	6,800	4.7" (Round)	4.7" (Round)	1.7"
HTM-RKPUS-LED-80WV2	80W	250W HID	100-277VAC	3000-5700K	9,700	7"	5.75"	2.5"
HTM-RKPUS-LED-120WD2	120W	400W HID	100-277VAC	3000-5700K	15,600	7"	5.75"	2.5"
HTM-RK-LED-120WA1E39-HV	120W	400W HID	200-480VAC	3000-5700K	13,928	7"	5.75"	2.5"
HTM-RKPUS-LED-150WD2	150W	500W HID	100-277VAC	3000-5700K	19,300	10.4"	6.3"	2.4"
HTM-RK-LED-150WA1E39-HV	150W	500W HID	200-480VAC	3000-5700K	17,000	10.4"	6.3"	2.4"
HTM-RKPUS-LED-200WD2	200W	600W HID	100-277VAC	3000-5700K	21,000	10.4"	6.3"	2.4"
HTM-RKPUS-LED-300WD2	300W	1,000W HID	100-277VAC	3000-5700K	36,000	12.6"	9.3"	3"
HTM-RKPUS-LED-300WD2-HV	300W	1,000W HID	200-480VAC	3000-5700K	36,000	12.6"	9.3"	3"
HTM-RKNUS-LED-320WV1	320W	1,000W HID	100-277VAC	3000-5700K	32,600	12.6"	9.3"	3"