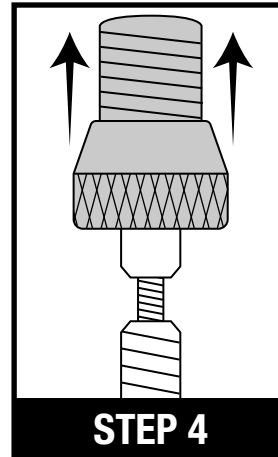
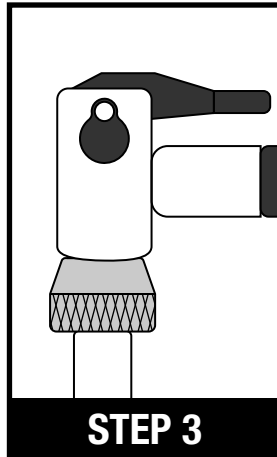
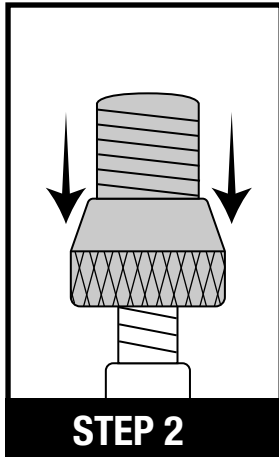
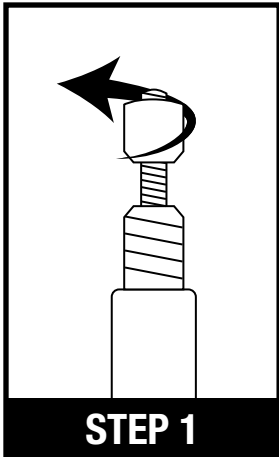


NEW!

# VALVE ADAPTER

Press On Presta to Schrader

- Easy press on
- Fits all Presta valves
- Use with any tire pump, inflator or gauge



## INSTRUCTIONS

1. Loosen the nut on the Presta valve core and press down.
2. Press on the Presta valve adapter.
3. Use with any tire pump, inflator or gauge.
4. Remove the Presta valve adapter and tighten the nut on the Presta valve core.

**PRO TIP:** You can store the presta valve adapter on your valve after you use it.