



Blazemaker Road Glide LED Headlight Kit Installation Instructions

GENERAL

It is **strongly advised** that this kit be installed by an authorized Harley-Davidson dealer.

Installation Requirements

WARNING

Rider and passenger safety depend upon the correct installation of this kit. Use the appropriate service manual procedures. If the procedure is not within your capabilities or you do not have the correct tools, have a Harley-Davidson dealer perform the installation. Improper installation of this kit could result in death or serious injury.

NOTE

This instruction sheet refers to service manual information. A service manual for this year/model motorcycle is required for this installation and is available from a Harley-Davidson dealer.

PREPARATION

NOTE

For vehicles equipped with security siren: Verify that the Hands-Free Fob is present. Turn the ignition key switch to IGNITION.

WARNING

To prevent accidental vehicle start-up, which could cause death or serious injury, remove main fuse before proceeding.

1. Reference the service manual and remove the main fuse.

INSTALLATION

1. Remove the windshield per the service manual instructions. Set the windshield aside in a protected location.

NOTE

Cover the front fender with H-D Service Covers or clean shop towels to prevent scratching the finish.

2. 2010 and later models:

- a. Remove the outer fairing per service manual instructions. Lay the fairing front face down, on a protected work surface.
- b. Reference the service manual to remove the headlight assembly.

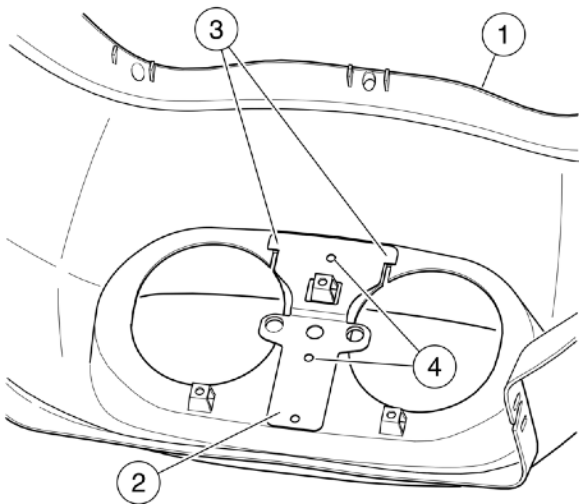
2. 2009 and earlier models:

- a. Remove the outer fairing per service manual instructions. Lay the fairing bottom side down, on a protected work surface.
- b. Reference the service manual to remove the headlight assembly.

Use of the original equipment (OE) clear headlight cover is not permitted over LED headlights. It will not be reinstalled, and can be set aside.

NOTE

- Ambient temperature should be **at least** 16 °C (60 °F) for proper adhesion of the lamp support bracket to the fairing.
 - Allow **at least** 24 hours after applying the bracket before exposing the area to extreme weather.
 - The adhesive bond will increase to maximum strength after about 72 hours at normal room temperature.
3. See **Figure 2**. Get the lamp support bracket (14) from the kit. Test-fit the bracket to the back side of the outer fairing, between the headlight openings as shown in **Figure 1** before installation. Do not remove the liners until ready to apply the bracket.



1. Outer fairing
2. Lamp Support Bracket
3. L-shaped notch (2)
4. Drill (2) holes in fairing

Figure 1. Install Lamp Support Bracket

4. Clean the bracket mounting area on the fairing (1) with a 50-50 mixture of isopropyl alcohol and distilled water. Allow to dry thoroughly.
5. Remove the liners from the adhesive backing of the lamp support bracket (2). Carefully position the bracket to the back side of the outer fairing, aligning the edges of the L-shaped notches (3) with the edges of the slots in the fairing. Press the bracket firmly into place. Hold the bracket in position with steady pressure for about one minute.
6. Using the bracket holes (4) as a guide, drill two 6.8 mm (17/64 in) to 7 mm (9/32 in) diameter holes in the fairing.
7. On the front side of the fairing, chamfer the newly drilled holes to clean up any burrs.
8. See **Figure 2**.
 - a. Get the front support plate (15) and two lock nuts (16) from the kit.
 - b. Align the cutout in the support plate with the pocket in the fairing.
 - c. Insert the studs of the support plate through the fairing and support bracket.
 - d. Fasten the support plate to the fairing with the lock nuts, and tighten to 8.1–10.8 N·m (6–8 ft·lbs).
9. Install the adjusting screws (7) and (8) to the LED headlight assembly, using the bolts (10) and mounting plates (9).
10. Use the two screws (13) to install the heat shield (12) behind the upper left-side headlight.

11. Install the LED headlight assembly into the outer fairing.
 - a. Align the adjusting screws (7) and (8) with the holes at the base of the three pockets (A) in the dual headlight bezel. Start the screw threads into the holes.
 - b. Align the three headlight mounting clips (11) with the sides of the pockets. Align the two bushings (3) with the holes in the LED light support bracket (15).
 - c. Make sure the wings of the headlight clips are fully engaged and sprung out in the rectangular holes in the fairing. Make sure no flash is present along the edges preventing full engagement.
12. There is an orange/white wire and a black wire (both labeled [29B]) on the main vehicle harness. Each has a spade receptacle connector on the end.

On U.S. versions, the wires are taped back unused.
For all other applications, the wires were connected to the position lamp, removed earlier with the OE headlight assembly.
In either case, tape back the orange/white & black wires.

NOTE

Cover the front fender with H-D Service Covers or clean shop towels to prevent scratching the finish.

13. Bring the outer fairing to the vehicle and mate the two sets of H4 (18) headlight connectors.
14. Install the outer fairing to the vehicle per the service manual instructions. Verify full engagement between the outer fairing and the hooks on the radio bracket.
15. Install the windshield per the service manual instructions.

RETURN TO SERVICE

NOTE

*To prevent possible damage to the sound system, verify that the ignition key switch is in the OFF position **before** installing the main fuse.*

1. Reference the service manual and install the main fuse.
2. Turn the ignition key switch to IGN, but do not start the motorcycle. The headlights should illuminate. Check both high and low beam operation.
3. Check headlight alignment per service manual instructions.

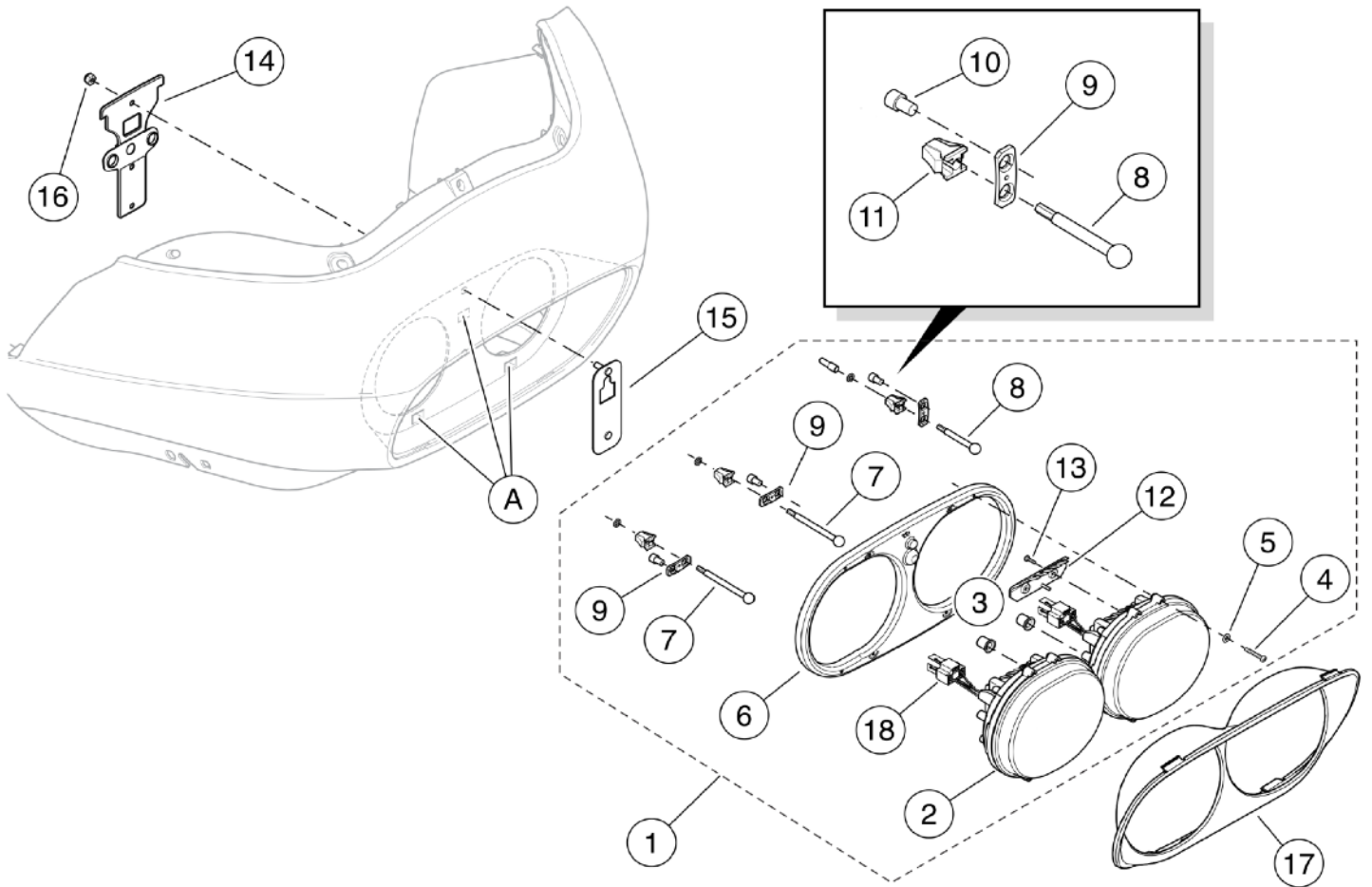


Figure 2. Headlight Assembly & Parts - RRI Blazemaker Road Glide LED Headlight Kit