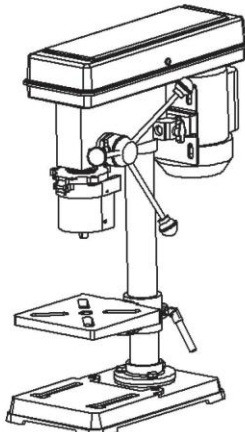


**DIRTY PRO  
TOOLS®**

97-105 MONK STREET DERBY UK DE22 3QE

# INSTRUCTION MANUAL



**DRILL PRESS**

**FMNO: ??**

Model Number : A805 DBR500



# **Table of Contents:**

Page

Technical specifications.....	1
Safety regulations.....	2
Intended Use.....	4
Device description.....	5
Mounting.....	6
Operation.....	7
Service and maintenance .....	9
Troubleshooting.....	10



Please read before first using the instructions carefully, to avoid mishandling . Keep these instructions in a safe place, so that the information available at any time .

# **Technical specifications:**

Mains voltage	230 V~, 50 Hz
Power	550 W
Idle speed	2350 min-1
Speed levels	9
Chuck	3-16 mm
Throat	127 mm
Spindle	60 mm
Table dimensions	200 x 195 mm
Weight	ca. 18 kg

## **Safety regulations:**

You should check the following before using the router table:

- The router table and all the accessories are mounted and are functioning properly.
- The router table is fixed firmly on a flat surface.
- All fittings and screws are properly tightened.
- The fittings that are holding the routers fully tightened so that the router relative to the router table can not move.
- The cutter is mounted correctly on the router.
- The work area is free from sawdust and the like.
- The router and all accessories are correctly set.
- Use the router table not as a workbench or carpenter's bench, because this could damage the router table.
- The equipment should always be carried out at the stop, otherwise parts could the work material are hurled through the air and cause personal injury.
- Use existing auxiliary equipment to handle very long working materials, because the table could tip otherwise.
- Never stand on the table.
- Keep away from children.
- Work material can be placed only in the working direction of the upper milling.
- Keep your hands away from the cutter. Use to carry a stick or similar small parts for milling.
- Do not use cutters of a diameter greater than 38mm Types
- If some router types are vertically mounted under the router table, this may fall down when adjusting the cutting depth. Be especially careful when you hold the router while setting the depth of cut.
- Start and Turn on the router with the central switch on the router table from.
- Run your hand never under the router table when the Router is powered on.
- The central switch can be used only if it is mounted at the table.
- Provide for a tidy work space and adequate lighting conditions.
- Never use damaged or defective mains and extension cables.
- Do not install any provisional electrical connections.
- Avoid body contact with earthed surfaces (heater, stove, refrigerator, etc.).
- Keep the machine away from humidity and wetness. Never in the snow, or humidity
- Use rain.
- Wear protective clothing (gloves, goggles, dust mask, hearing protection)
- Check the unit regularly for loose, broken, or damaged parts. Damaged
- Replacing or defective parts immediately, tighten loose parts.
- Use only original spare parts
- Use only matching accessories.

- Never pull on the power cord !
- Always disconnect mains plug before moving or relocating !
- If you change the tool , be sure to disconnect the mains plug !
- Always disconnect mains plug before maintenance and repair work !
- Disconnect Before Troubleshooting / Troubleshooting from the power source !
- Only use sockets which have a FI circuit breaker . Missing this must
- Unit can be powered via a GFCI switch .
- Store the device in a dry place at constant temperatures .

## **General safety**


- For safe use of this machine , the user of the machine must have read and understood before the first use of this manual .
- Observe all safety instructions ! If you disregard the safety instructions , you endanger yourself and others .
- Keep all operating instructions and safety for the future .
- Keep children away from the machine . Keep the machine away from children and unauthorized persons on .
- Powered-off machine always secure it against inadvertent switching on .
- All parts of the machine , especially safety equipment must be fitted correctly to ensure proper operation .
- Tags, or making unauthorized alterations to the machine and the use of unauthorized parts is prohibited.

## **Electric security**

- The machine may only be connected to a socket with the properly installed earthing contact.
- Protection must be provided with a residual-current circuit breakers (RCD) carried out with a rated residual current not exceeding 30 mA.
- Before connecting the machine must be ensured that the power supply conforms to the data connection of the machine.
- The machine may only be used within the specified limits for voltage, power and rated speed (see nameplate).
- If necessary, use an extension cord suitable for the machine and environment.
- The machine must never be operated in a damp or wet environment.
- Do not lift the machine by the cable or cable divert elsewhere.
- Immediately unplug the mains plug of the power cord if damaged. Never use the machine with a damaged cord.
- When working with the machine no earthed object (radiators, water pipes etc.) touch
- When not in use always the plug must be pulled.
- Before plugging in the power cord to make sure that the machine is powered off.
- Always turn off the machine before unplugging it.
- The machine during transport de-energize.

## **Risks**

Even under normal use of the machine and in observance of all safety in this manual have the following residual risks may arise:

- Touch the current sandpaper surfaces in the non- covered area .
- Kickback of workpieces and workpiece parts .
- When editing some materials carcinogenic dust can occur . Use in such work necessarily an appropriate respirator (  Persönliche protective equipment ) . Observe manufacturer's instructions ! The contact or inhalation of the dust represents a danger to the operator , and near work area. Function of the suction check regularly and ensure sufficient ventilation .

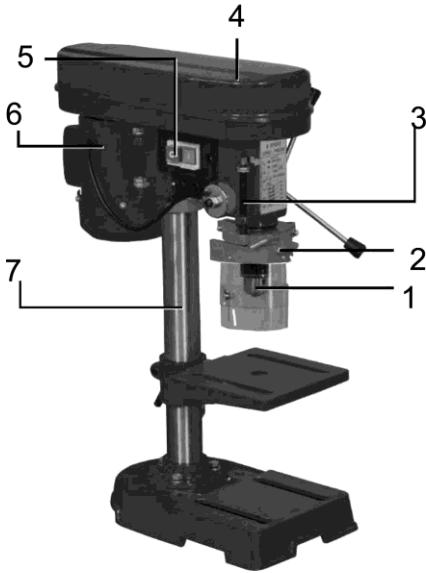
## **Personal protective equipment**

- Wear a dust mask when working with heavy dust.
- Wear protective goggles when working with abrasive tools.
- Wear ear protection when working with strong noise.
- Wear tight-fitting workwear.
- Apply a head covering for long hair.
- Never wear protective gloves on rotating machine parts.
- Never remove dust with the bare hand! Remove dust after switching off the machine with a brush or hand-held.

## **Intended Use**

This vertical , bench-mounted drilling machine drills apart from masonry , in a variety of materials . Both precise adjustment of the drilling depth , the hole position and the drilling angle are possible . The machine has a stable Drilling table and is geeignet for using conventional drill chucks .

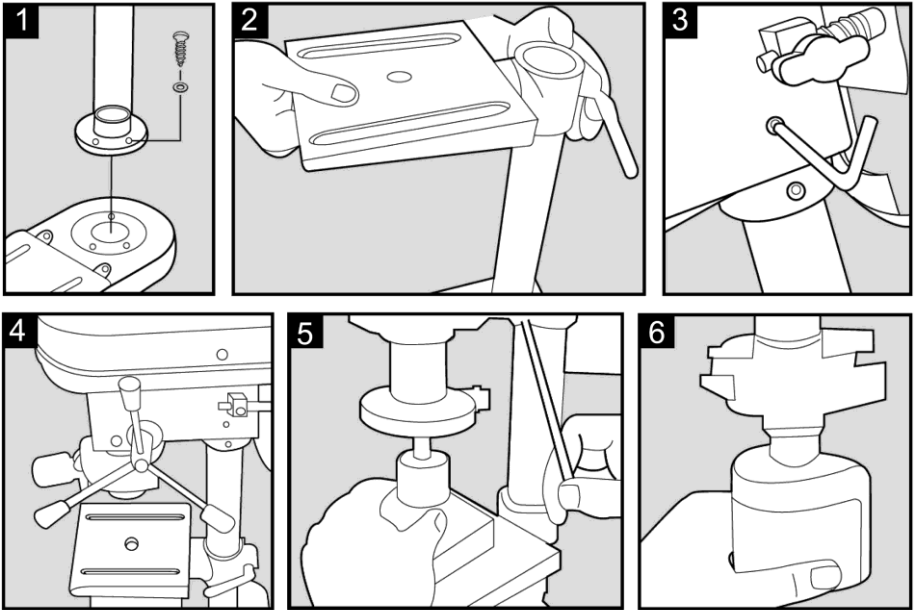
# Device Description



1	Chuck
2	Chuck cover
3	drilling depth scale
4	Pulley cover
5	On / off switch
6	Motor
7	Column
8	Table angle screw (concealed)
9	Table angle scale
10	Bottom plate holes
11	Baseplate
12	Drilling table
13	Table clamping lever
14	Twist grip
15	Drive belt tension adjustment screw
16	Motor pulley
17	Spindle pulley



# Mounting



Be sure to observe the order of the assembly:

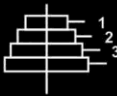
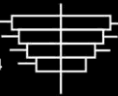

1. Mount the column of the drill on the drill base. Use the supplied screws to secure the screws.
2. Take the drilling table and pull it onto the column of the drill. The table can then be adjusted and inclined in height. The table height can be fixed at the back.
3. Mount the motor part of the table boring machine onto the column. This can be placed on the column. Use the allen head screws to secure it to the side.
4. Now mount the handles. These have a thread at the end and are simply turned into the shaft at the intended location.
5. Now mount the drill chuck. Caution, the drill chuck is fixed by means of a force connection. There is no thread. Press the drill chuck from below and hold it firmly. Rotate it several times, after that it is fixed.
6. Finally, mount the screen.

# Operation

## Setting the speed

**Note : Adjust the drive belt screw (10) before using the device.**

- The drill has 9 speed levels. You can refer to the respective speeds and the corresponding drive belt positions the following table. Moreover, approximate values with respect to the drill types are specified .

SPINDLE			MIDDLE			MOTOR		
								
① A-4	280RPM	② B-4	450RPM	③ C-4	540RPM			
④ A-3	620RPM	⑤ A-2	800RPM	⑥ B-3	1000RPM			
⑦ C-2	1550RPM	⑧ B-1	1700RPM	⑨ C-1	2350RPM			

1. Before speed settings are made, the machine must be disconnected from the mains .
2. Remove the screw. The pulley cover ( 4 ) on the tensioning screw ( 10 ) and open the cover
3. The speed depends on the position of the intermediate spindle ( 8 ) and the motor pulley ( 9 ) .
4. Loosen the drive belt tension adjustment screw ( 10 ) and pull the motor ( 2 ) toward the front .
5. Position the drive belt to the desired position .
6. Tighten the belt by pushing back the engine again and then tighten the clamping screw. Close the cover and replace the screw on.



# Operating instructions

## Twist grip

Take lead in the material to be drilled the rotary handle ( 11 ) to the drill . The chuck embarks independently when not using the rotation handle in the starting position .

## Operation of the drill

The chuck ( 7 ) can be opened using the supplied key and close .  
Make sure that the chuck is clamped properly before you use the appliance safely.

## On / off switch

To start the tool , press I on the ON / OFF switch ( 3 ) . To turn off the 0 key.  
Let the machine no longer than 15 minutes to run in continuous operation.

## Setting the drilling table

The drilling table can be in height, tilt , and adjust rotation .

To adjust the **table position**

- Loosen the table clamping lever ( 12 ) .
- Bring the table into the desired position and tighten the table clamping lever again .
- With the right tool, loosen the table angle screw (17) and can thus the inclination angle based on the table angle scale ( 16 ) to adjust . Tighten the screw again.

To adjust the **drilling depth**

- The drilling depth can be adjusted to the desired level between 0 and 50 mm on the two nuts on the depth scale ( 5 ) .
- Excessive pressure does not lead to quicker or more efficient drilling but also shortens its life. Reduce the pressure as soon as the speed of the drill down markedly.

## Drilling in wood

- Ensure that the clamped drill is suitable for wood , and its maximum speed is greater than the set working speed.

## Drilling of metals

- Ensure that the clamped drill is suitable for the respective hardness of the metal and its maximum speed is greater than the set working speed.
- Practice when drilling only slight pressure and remove any burrs on the holes with an appropriate tool.

# **Maintenance and Storage**

**Disconnect the device from the power supply before performing maintenance always!**

## **General**

- Check periodically all the fastening screws as they will work loose over time .
- Check before use always the power cord and the plug for damage. Repairs may be performed only by authorized repairers.
- Moving parts must be lubricated periodically with areas equipped spray lubricant.

## **Cleaning**

- Keep the product clean at all times.
- Clean the device with a dry cloth or similar . If a dry-cleaning is not sufficient , use a mild detergent and a damp cloth .
- Before re-use , the device must be completely dry .

## **Storage and disposal**

- The device must be stored in a clean , dry place and be accessible to children.
- Power tools and electronic equipment must not be disposed of with household waste.
- Let yourself where appropriate, by the competent authorities regarding proper disposal.

# Troubleshooting

<b>Disorder</b>	<b>Possible Cause</b>	<b>Solution</b>
Bench drill does not start	No mains connection	Set is sure that the power cord is plugged in and powered
	Blown fuse plug	Check the fuse of the plug and replace it if necessary
	Pulley cover (4) is not closed	Completely close the belt cover. In addition, check the safety switch
	Equipment failures	Consult a dealer authorized
Unusual / very loud operation sound	Incorrect belt tension	Change belt tension
	Spindle must be lubricated	Grease on the inner spindle between chuck (7) and spindle pulley (8).
	Damaged / Worn drive belt	Replace drive belt.
	Loosened screws	Check all parts for proper installation.
Drill generates smoke or unusual heat	Wrong speed setting	Change speed.
	Blunt drills	Replace or sharpen drills.
	Material / drill drilled dry	Use lubricant or cutting fluid.
Drill wobbles or off-balance	Bent drills	Drill replaced
	Drill not right in the feed	Drill reseal into the lining.
	Worn spindle bearings	Consult a dealer authorized.
Drill clamped in the workpiece	Too low voltage of the drive belt	Change belt tension.

# DECLARATION OF CONFORMITY



**DIRTY PRO  
TOOLS®**

97-105 MONK STREET DERBY UK DE22 3QE

## DECLARATION OF CONFORMITY

This is an important document and should be retained.

<sup>1</sup> We hereby declare that this product(s) complies with the following directive(s):

2004/108/EC *Electromagnetic Compatibility Directive.*

2006/42/EC *Machinery Directive.*

2011/65/EU *Restriction of Hazardous substances.*

The following standards have been applied to the product(s):

*EN 61029-1+A11:2010, EN ISO 12100:2010, EN 55014-1+A2:2011, EN 55014+A2:2008,*

*EN 61000-3+A2: 2009, EN 61000-3-3:2008.*

**DIRTY PRO TOOLS MODEL NO : A805 DRILL PRESS**

Signed

DIRECTOR - RUGBIR JOHAL

DATE ISSUED - 01/12/2019