

J.S.T.MEDICAL

MEDICAL + DENTAL + VETERINARY

INSTALLATION REQUIREMENTS for MELAG CLINIKAVE 45 SERIES SINGLE DOOR STERILISERS

Models covered are the Cliniklave 45 and 45M

These units require the correct location and services to ensure the correct functioning of the units. The services listed below are to be provided by trades other than the sterilising installing and commissioning companies.

Services required.

Cold Water:

We require a cold water tap (example below) to be supplied for connection of cold water to the steriliser. The water pressure range is 2.5 - 4 bars at a minimum flow rate of 15 L/Minute. The maximum static pressure is 10 bar. Water quality is to be of drinking ability. The outlet thread of the tap is to be 20 mm BSP. This valve is to be on either the left hand or right hand side of the unit and within 1 meter of the steriliser.



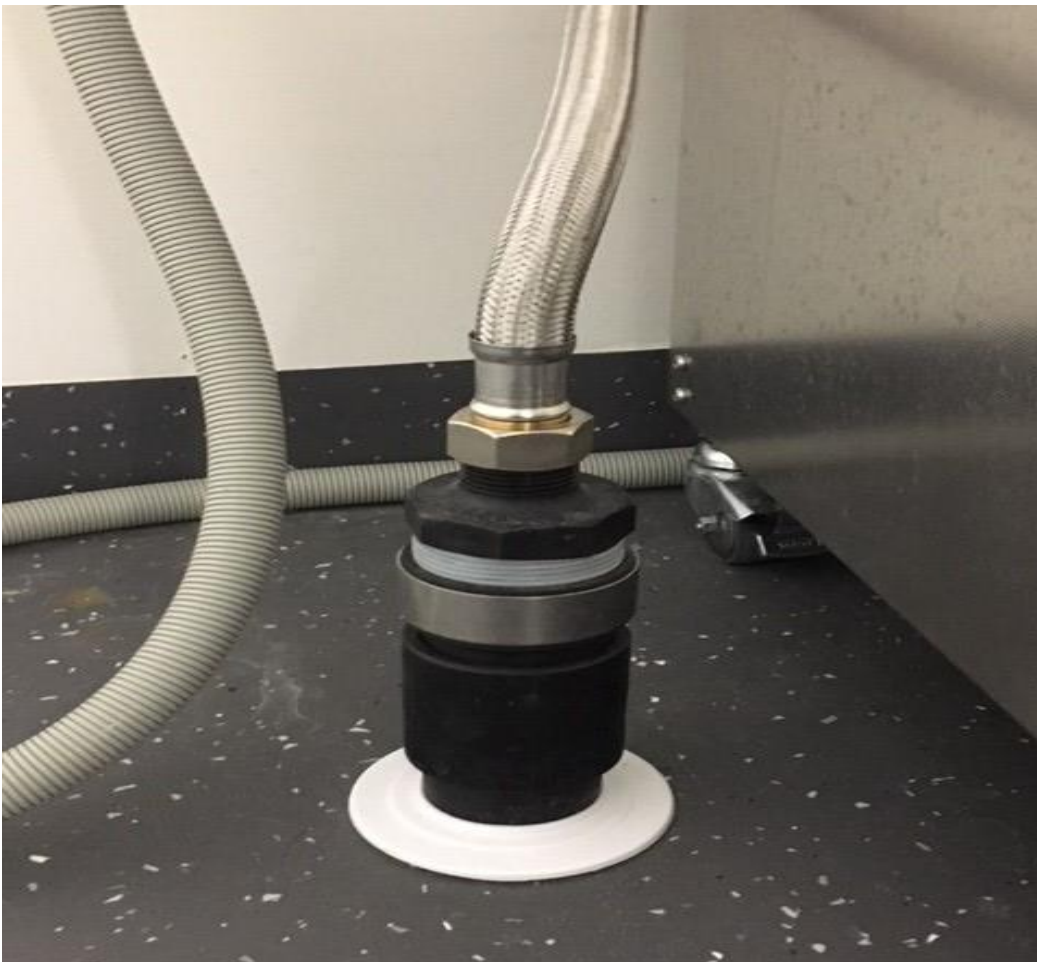
We strongly recommend adding a [water stop valve](#) to the installation.

Drain;

To ensure quiet operation of the steriliser we require a separate drain for the steriliser and cannot connect direct to a “spigot” on the ‘S’ trap of a sink. The discharge temperature does not exceed 83^{OC}. The drain is to be HDPE pipe 50 mm diameter and terminating with a 25 mm BSP male thread. We connect our drain hose to this male thread.

This drain is to be located on either the left hand side or right hand side of the unit and within 150 mm of the unit. The connection thread is to terminate no higher than 450 mm above the floor.

The picture below shows the drain detail we require.



Electrical Connection:

Cliniklave 45 (105 litre unit)

The power supply is 16 Amps per phase 3 phase and Neutral.

Cliniklave 45M (200 litre unit)

The power supply is 32 Amps per phase 3 phase and Neutral.

This power is to be located on either the left hand side or right hand side of the unit and within 150 mm of the unit.

Both units come with a European plug top. We have a European base and socket available as an installation extra. This is a \$230.00 + GST option and is Australian / New Zealand Standards accepted, these can be ordered through J.S.T. . Should the site supervisor elect to use an Australian / New Zealand style base and socket such as a Clipsal model P520 then the site electrician supplies this base, socket and plug top for the steriliser at their cost.

Ethernet connection:

The unit has the ability to communicate with a network system should this option be needed for tracking or downloading of records to a network. The unit is supplied standard with an Ethernet point and requires a Cat 5 point to enable networking.

Space required.

Please [click here](#) or refer to the installation drawing from Melag that will be on our website

General Notes:

There are several options of printers these being log printers and bar code label printers. For any electrical accessories chosen we require a standard 10 Amp GPO to be provided for these accessories. We suggest a double GPO is provided within 50 cm of the steriliser for accessories.

The units must be serviced annually to meet the requirements of AS/NZS 4815 and AS/NZS 4187. Consideration must be given to the space required so that technician can service the sterilisers efficiently thus reducing the downtime when servicing is required. Melag units can be repaired and serviced on site and do not require removal to effect repairs except in very rare occasions.

For technical assistance please contact James on 021667987 or email info@jstmedical.co.nz

J.S.T. MEDICAL

MEDICAL + DENTAL + VETERINARY

MELAG