



Customer: Hemped Rx
 Customer Sample ID: Bee Balm
 Laboratory Number: 20B0238-01



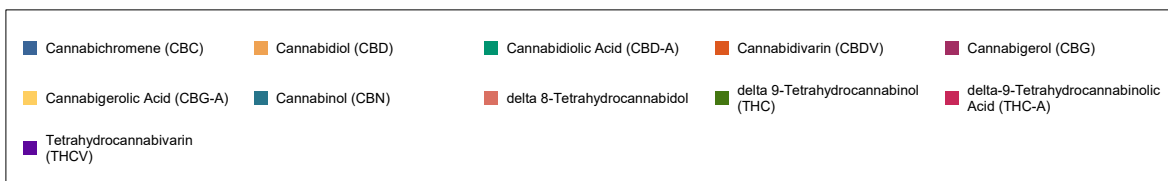
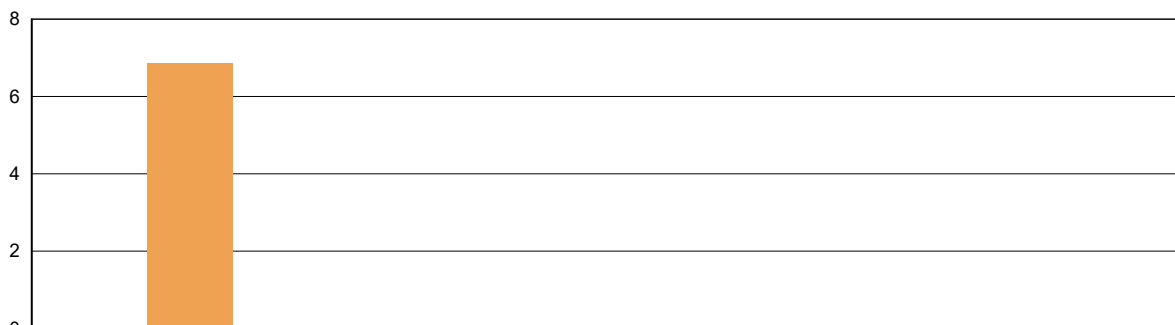
Cannabinoid Profile

Extraction Technician: MF
 Analytical Chemist: CB

Extraction Date(s)	Analysis Date(s)
2/20/2020	2/20/2020

Cannabinoids (HPLC)		Results	
	LOD (mg/g)	%	mg/g
Cannabidivarin (CBDV)	<0.20		
Cannabidiolic Acid (CBD-A)	<0.20		
Cannabigerolic Acid (CBG-A)	<0.20		
Cannabigerol (CBG)	<0.20		
Cannabidiol (CBD)		0.69	6.87
Tetrahydrocannabivarin (THCV)	<0.20		
Cannabinol (CBN)	<0.20		
delta 9-Tetrahydrocannabinol (THC)	<0.20		
delta 8-Tetrahydrocannabidol	<0.20		
Cannabichromene (CBC)	<0.20		
delta-9-Tetrahydrocannabinolic Acid (THC-A)	<0.20		
Cannabinoids Total		%	mg/g
Max Active THC		0.00	0.00
Max Active CBD		0.69	6.87
T.Active Cannabinoids		0.69	6.87
Total Cannabinoids		0.69	6.87
Ratios			
NA:1 CBD to THC		0.00:1 THC to CBD	

Cannabinoid (mg/g)



Altitude Consulting, LLC utilizes NIST traceable Reference Standards and Certified Reference Material to calibrate analytical instruments along with proven analytical methods . The methods are applied in the most ethical manner following good laboratory practice guidelines. The results of this report are based solely on the sample submitted and cannot be reproduced.



Customer: Hemped Rx
Customer Sample ID: Tincture - Strawberry
Laboratory Number: 20B0238-02

Density: 0.9435



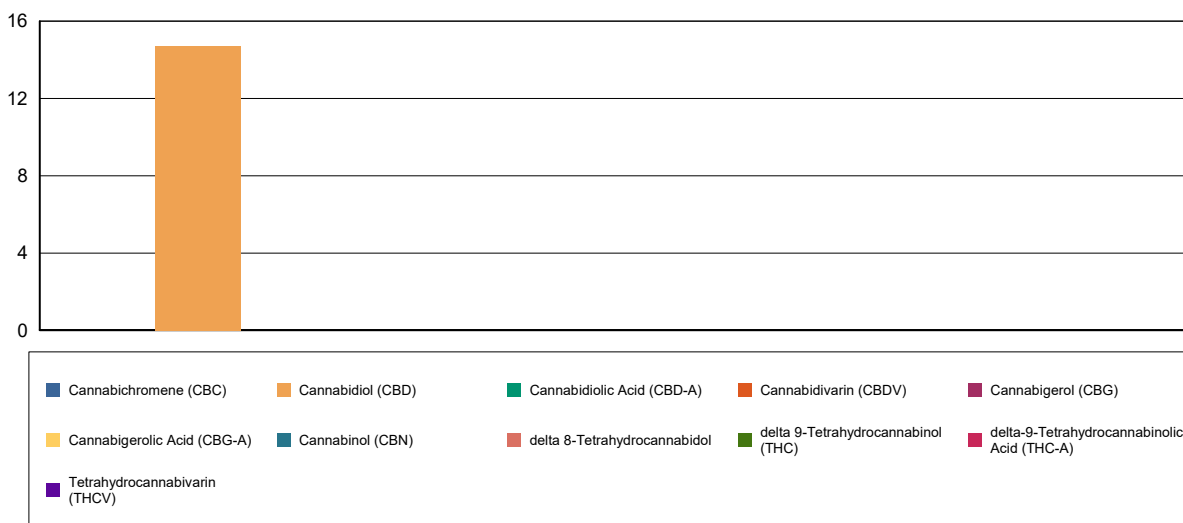
Cannabinoid Profile

Extraction Technician: MF
Analytical Chemist: CB

Extraction Date(s)	Analysis Date(s)
2/20/2020	2/20/2020

Cannabinoids (HPLC)		Results	
	LOD (mg/mL)	%	mg/mL
Cannabidivarin (CBDV)	<0.090		
Cannabidiolic Acid (CBD-A)	<0.090		
Cannabigerolic Acid (CBG-A)	<0.090		
Cannabigerol (CBG)	<0.090		
Cannabidiol (CBD)		1.47	14.7
Tetrahydrocannabivarin (THCV)	<0.090		
Cannabinol (CBN)	<0.090		
delta 9-Tetrahydrocannabinol (THC)	<0.090		
delta 8-Tetrahydrocannabidol	<0.090		
Cannabichromene (CBC)	<0.090		
delta-9-Tetrahydrocannabinolic Acid (THC-A)	<0.090		
Cannabinoids Total		%	mg/mL
Max Active THC		0.00	0.00
Max Active CBD		1.47	14.70
T.Active Cannabinoids		1.47	14.70
Total Cannabinoids		1.47	14.70
Ratios			
NA:1 CBD to THC		0.00:1 THC to CBD	

Cannabinoid (mg/mL)



Altitude Consulting, LLC utilizes NIST traceable Reference Standards and Certified Reference Material to calibrate analytical instruments along with proven analytical methods. The methods are applied in the most ethical manner following good laboratory practice guidelines. The results of this report are based solely on the sample submitted and cannot be reproduced.



Customer: Hemped Rx
Customer Sample ID: Tincture - Cool Mint
Laboratory Number: 20B0238-03

Density: 0.9435



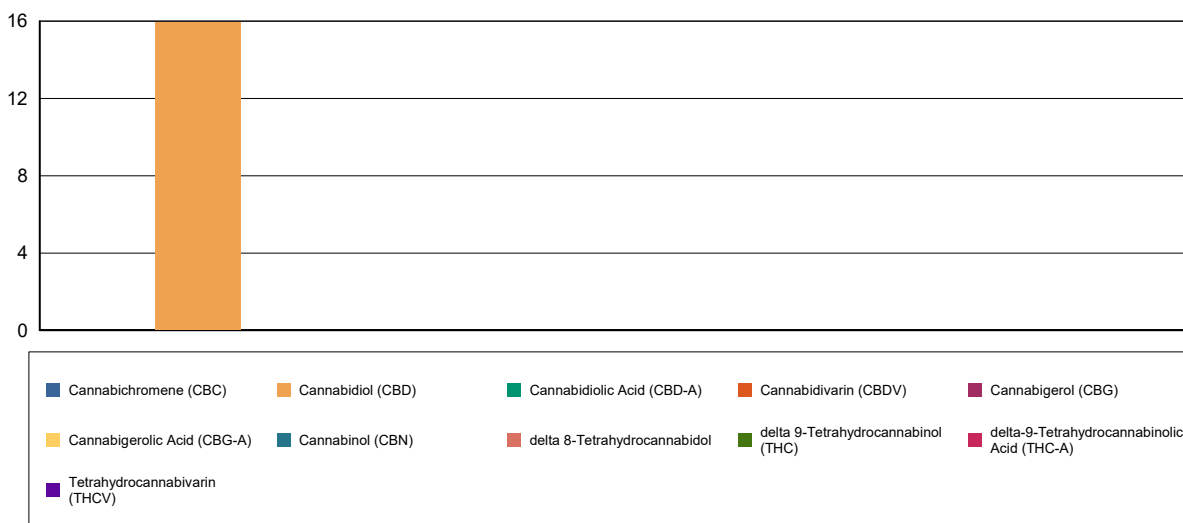
Cannabinoid Profile

Extraction Technician: MF
Analytical Chemist: CB

Extraction Date(s)	Analysis Date(s)
2/20/2020	2/20/2020

Cannabinoids (HPLC)		Results	
	LOD (mg/mL)	%	mg/mL
Cannabidivarin (CBDV)	<0.090		
Cannabidiolic Acid (CBD-A)	<0.090		
Cannabigerolic Acid (CBG-A)	<0.090		
Cannabigerol (CBG)	<0.090		
Cannabidiol (CBD)		1.59	15.9
Tetrahydrocannabivarin (THCV)	<0.090		
Cannabinol (CBN)	<0.090		
delta 9-Tetrahydrocannabinol (THC)	<0.090		
delta 8-Tetrahydrocannabidol	<0.090		
Cannabichromene (CBC)	<0.090		
delta-9-Tetrahydrocannabinolic Acid (THC-A)	<0.090		
Cannabinoids Total		%	mg/mL
Max Active THC		0.00	0.00
Max Active CBD		1.59	15.90
T.Active Cannabinoids		1.59	15.90
Total Cannabinoids		1.59	15.90
Ratios			
NA:1 CBD to THC		0.00:1 THC to CBD	

Cannabinoid (mg/mL)



Altitude Consulting, LLC utilizes NIST traceable Reference Standards and Certified Reference Material to calibrate analytical instruments along with proven analytical methods. The methods are applied in the most ethical manner following good laboratory practice guidelines. The results of this report are based solely on the sample submitted and cannot be reproduced.



Customer: Hemped Rx
Customer Sample ID: Tincture - Original
Laboratory Number: 20B0238-04

Density: 0.9435



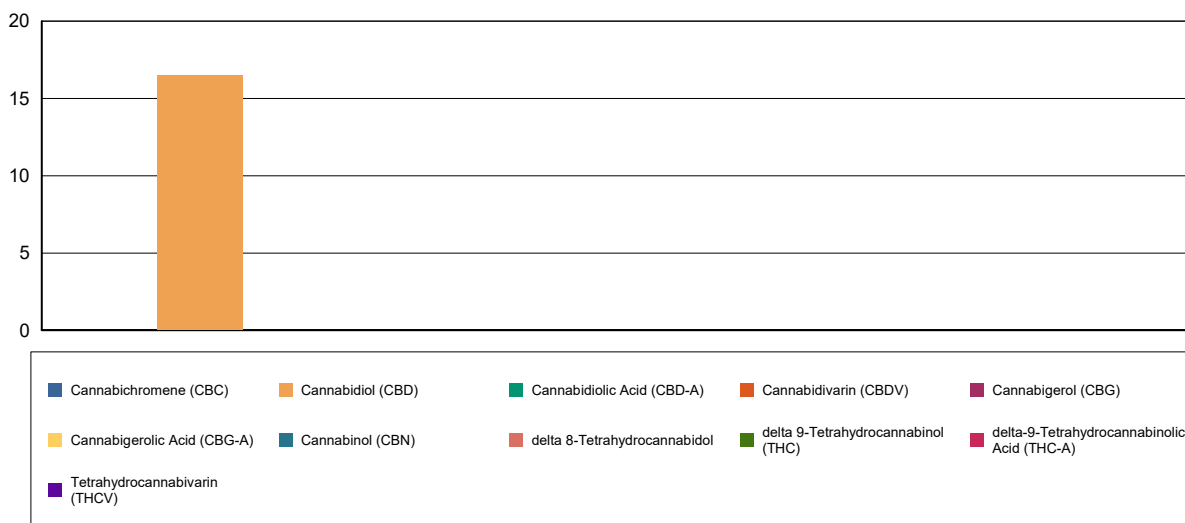
Cannabinoid Profile

Extraction Technician: MF
Analytical Chemist: CB

Extraction Date(s)	Analysis Date(s)
2/20/2020	2/20/2020

Cannabinoids (HPLC)		Results	
	LOD (mg/mL)	%	mg/mL
Cannabidivarin (CBDV)	<0.080		
Cannabidiolic Acid (CBD-A)	<0.080		
Cannabigerolic Acid (CBG-A)	<0.080		
Cannabigerol (CBG)	<0.080		
Cannabidiol (CBD)		1.65	16.5
Tetrahydrocannabivarin (THCV)	<0.080		
Cannabinol (CBN)	<0.080		
delta 9-Tetrahydrocannabinol (THC)	<0.080		
delta 8-Tetrahydrocannabidol	<0.080		
Cannabichromene (CBC)	<0.080		
delta-9-Tetrahydrocannabinolic Acid (THC-A)	<0.080		
Cannabinoids Total		%	mg/mL
Max Active THC		0.00	0.00
Max Active CBD		1.65	16.50
T.Active Cannabinoids		1.65	16.50
Total Cannabinoids		1.65	16.50
Ratios			
NA:1 CBD to THC		0.00:1 THC to CBD	

Cannabinoid (mg/mL)

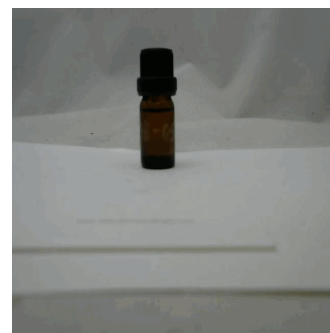


Altitude Consulting, LLC utilizes NIST traceable Reference Standards and Certified Reference Material to calibrate analytical instruments along with proven analytical methods. The methods are applied in the most ethical manner following good laboratory practice guidelines. The results of this report are based solely on the sample submitted and cannot be reproduced.



Customer: Hemped Rx
Customer Sample ID: Ollie Oil
Laboratory Number: 20B0238-05

Density: 0.9435



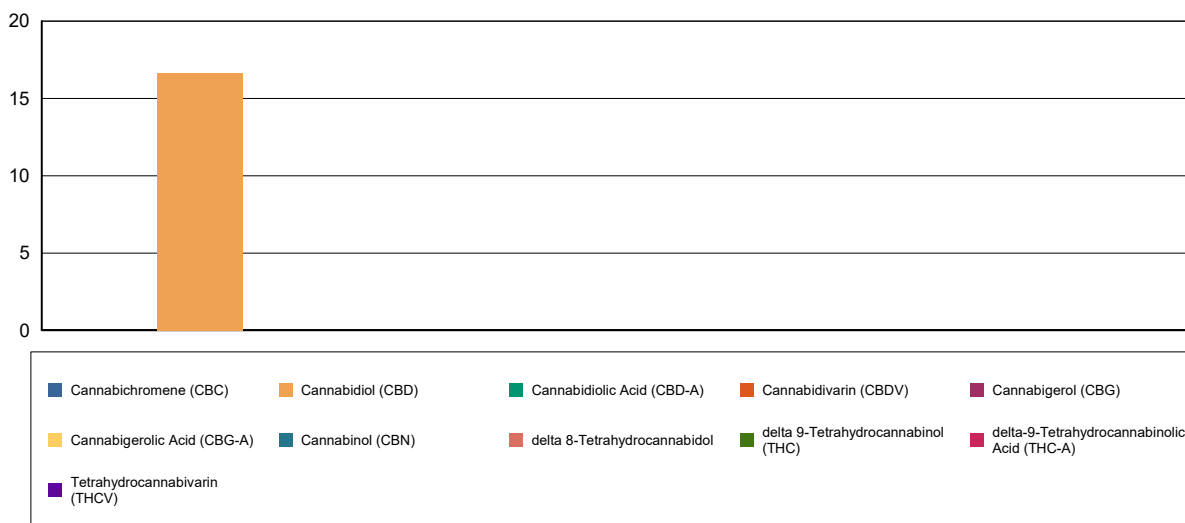
Cannabinoid Profile

Extraction Technician: MF
Analytical Chemist: CB

Extraction Date(s)	Analysis Date(s)
2/20/2020	2/20/2020

Cannabinoids (HPLC)		Results	
	LOD (mg/mL)	%	mg/mL
Cannabidiol (CBD)	<0.090	1.66	16.6
Tetrahydrocannabivarin (THCV)	<0.090		
Cannabidiol (CBD)	<0.090		
Cannabigerol (CBG)	<0.090		
Cannabigerolic Acid (CBG-A)	<0.090		
Cannabidiolic Acid (CBD-A)	<0.090		
Cannabidivarin (CBDV)	<0.090		
delta 9-Tetrahydrocannabinol (THC)	<0.090		
delta 8-Tetrahydrocannabinol	<0.090		
Cannabichromene (CBC)	<0.090		
delta-9-Tetrahydrocannabinolic Acid (THC-A)	<0.090		
Cannabinoids Total		%	mg/mL
Max Active THC		0.00	0.00
Max Active CBD		1.66	16.60
T.Active Cannabinoids		1.66	16.60
Total Cannabinoids		1.66	16.60
Ratios			
NA:1 CBD to THC		0.00:1 THC to CBD	

Cannabinoid (mg/mL)



Altitude Consulting, LLC utilizes NIST traceable Reference Standards and Certified Reference Material to calibrate analytical instruments along with proven analytical methods. The methods are applied in the most ethical manner following good laboratory practice guidelines. The results of this report are based solely on the sample submitted and cannot be reproduced.