



BARREL SAUNA HEAT SHIELD INSTALLATION GUIDE



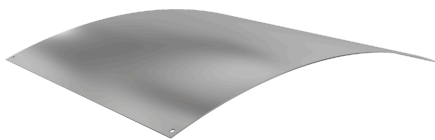


Barrel Heat Shield Installation Guide

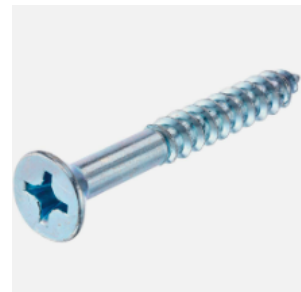
Congratulations on your purchase of the Sauna Shield Barrel Sauna Heat Shield! If you have any questions during assembly, please feel free to call us at 877-260-7478, or email info@saunashield.co. We are open Monday to Friday and our business hours are 9 am – 6 pm PST. Your barrel sauna heat shield can be applied to any brand of 6'-7' barrel saunas. Our installation guide is simplified since there are no placers, parts, or components other than the SHIELD and screws. You made a great choice on protecting your barrel sauna!

SAFETY DISCLAIMER: FOR YOUR SAFETY, PLEASE WEAR GLOVES WHEN INSTALLING THE SHIELD TO AVOID CUTS ON YOUR HAND. THE STAINLESS STEEL IS FINISHED BUT WE RECOMMEND WEARING GLOVES AS A PRECAUTION. PLEASE NOTE THE SHIELD PROTECTS THE CEILING FROM CHARRING, DISCOLORATION, AND DAMAGE. PLEASE REFER TO YOUR HEATER MANUAL FOR ELECTRICAL INFORMATION

What's Included:



STAINLESS STEEL HEAT SHIELD:
Quantity: 1



2 1/2" WOOD SCREWS:
Quantity: 4

Step 1:

Place and hold your shield directly at the curve of the barrel. Option to leave a 1-1.5" gap from the back wall or place the shield directly against the wall.



Step 2:

Screw in the 2" wood screws, starting with the center. Leave at least a 1" gap between the ceiling and stainless heat shield for the recommended airspace.



Step 3:

Relax and enjoy! Your sauna now has protection for the ceiling and a stainless steel heat reflector to radiate and distribute heat back into the room.



Sauna Shield
info@saunashield.co
877-260-7478

