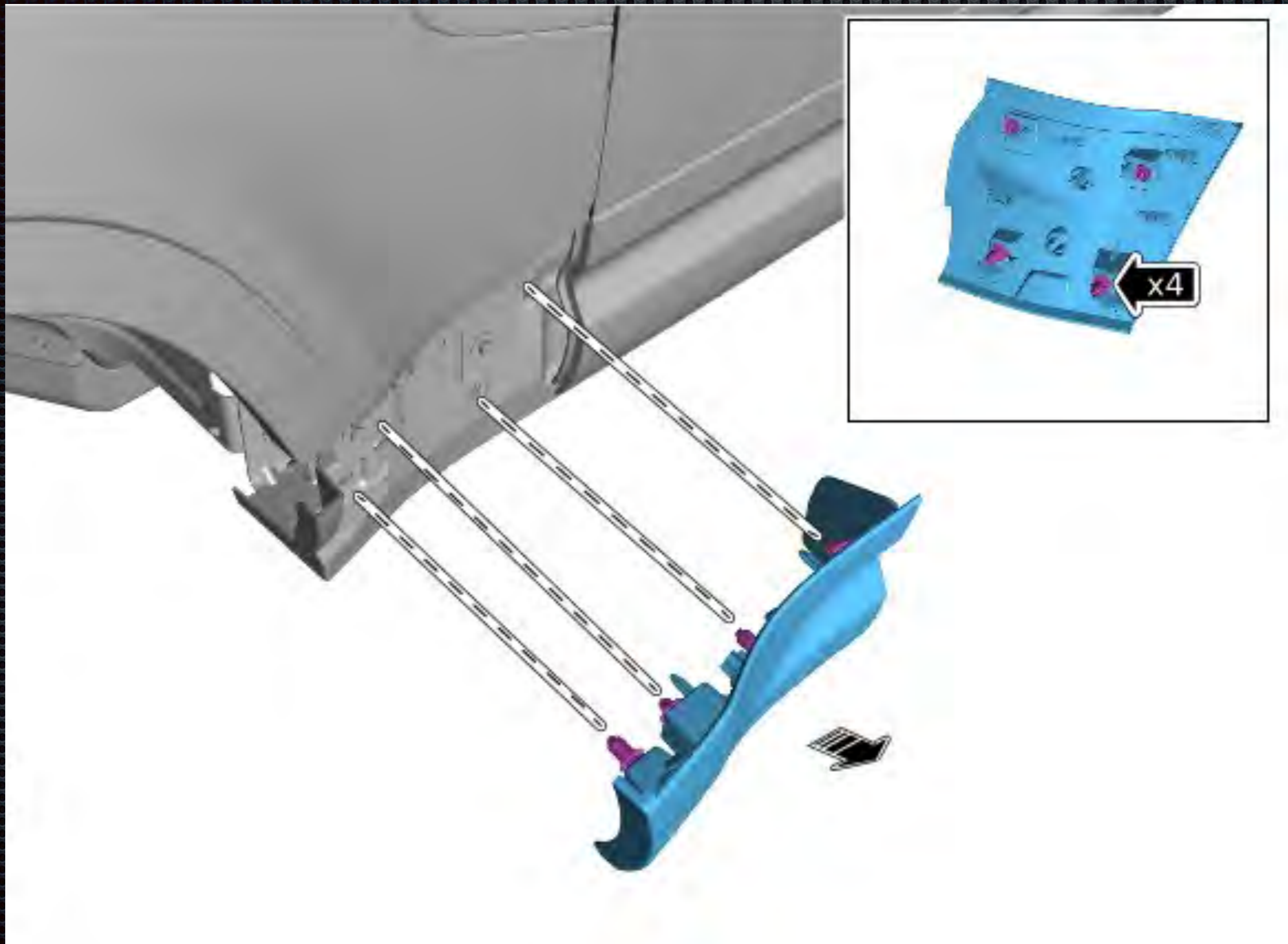


Defender 2

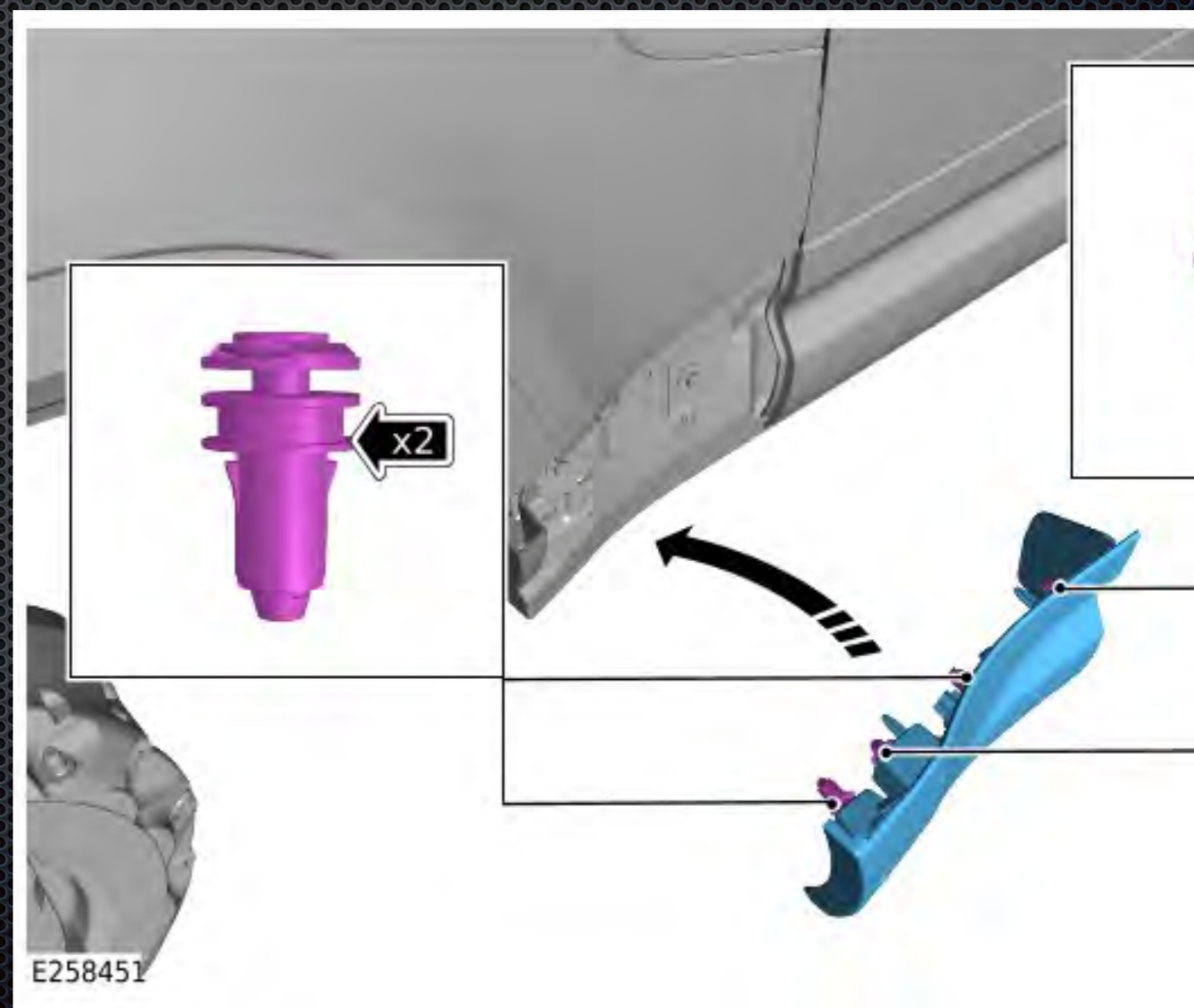
Rock Slider Installation Instructions



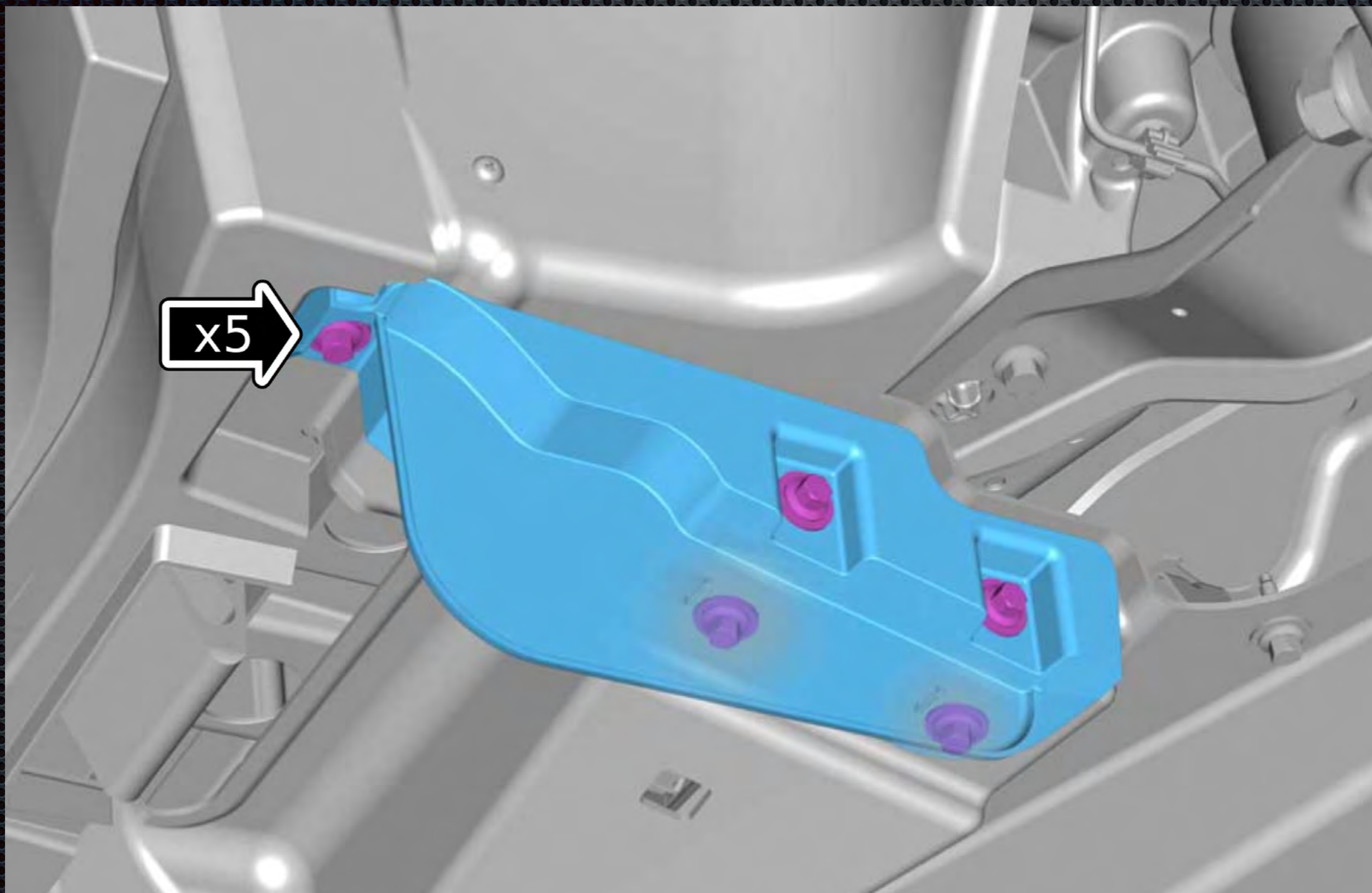
Remove Front Fender moulding.



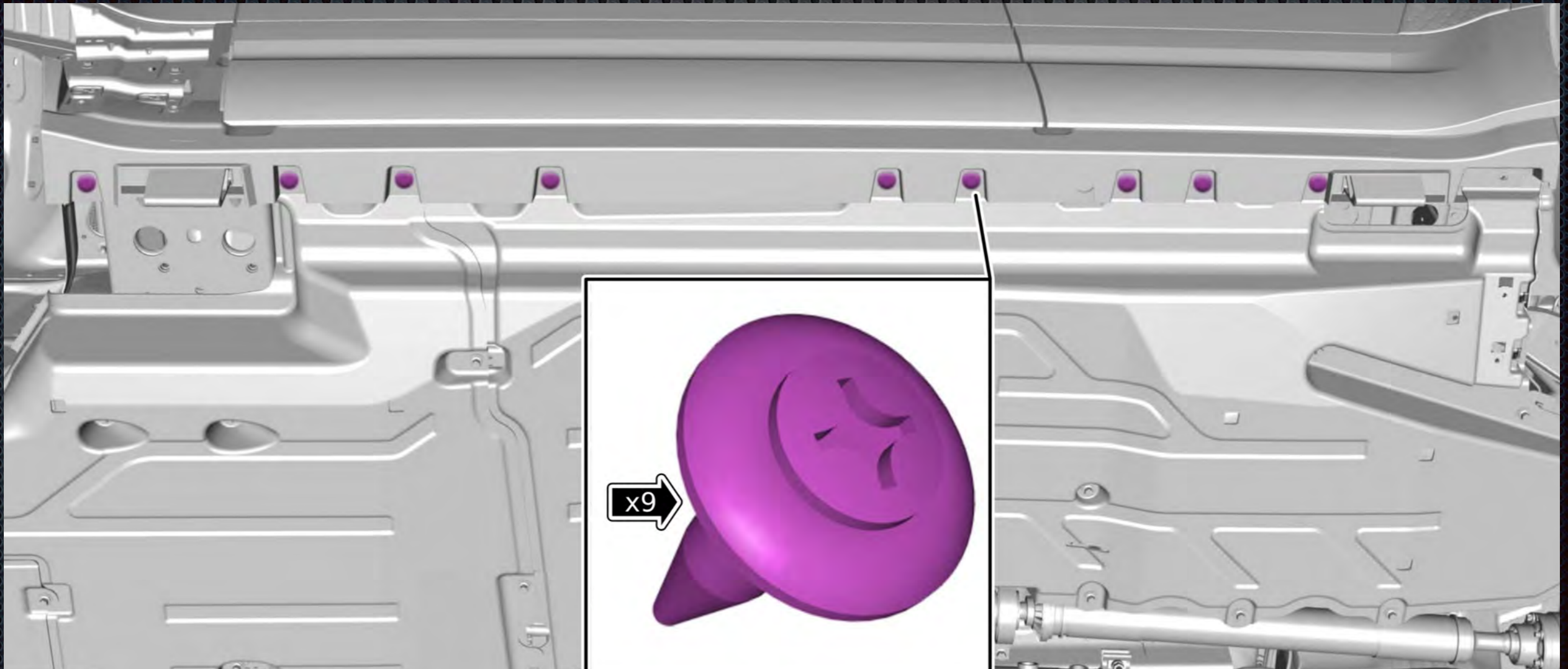
Note: Save these clips to be reused.



Remove rear fender splash guards.

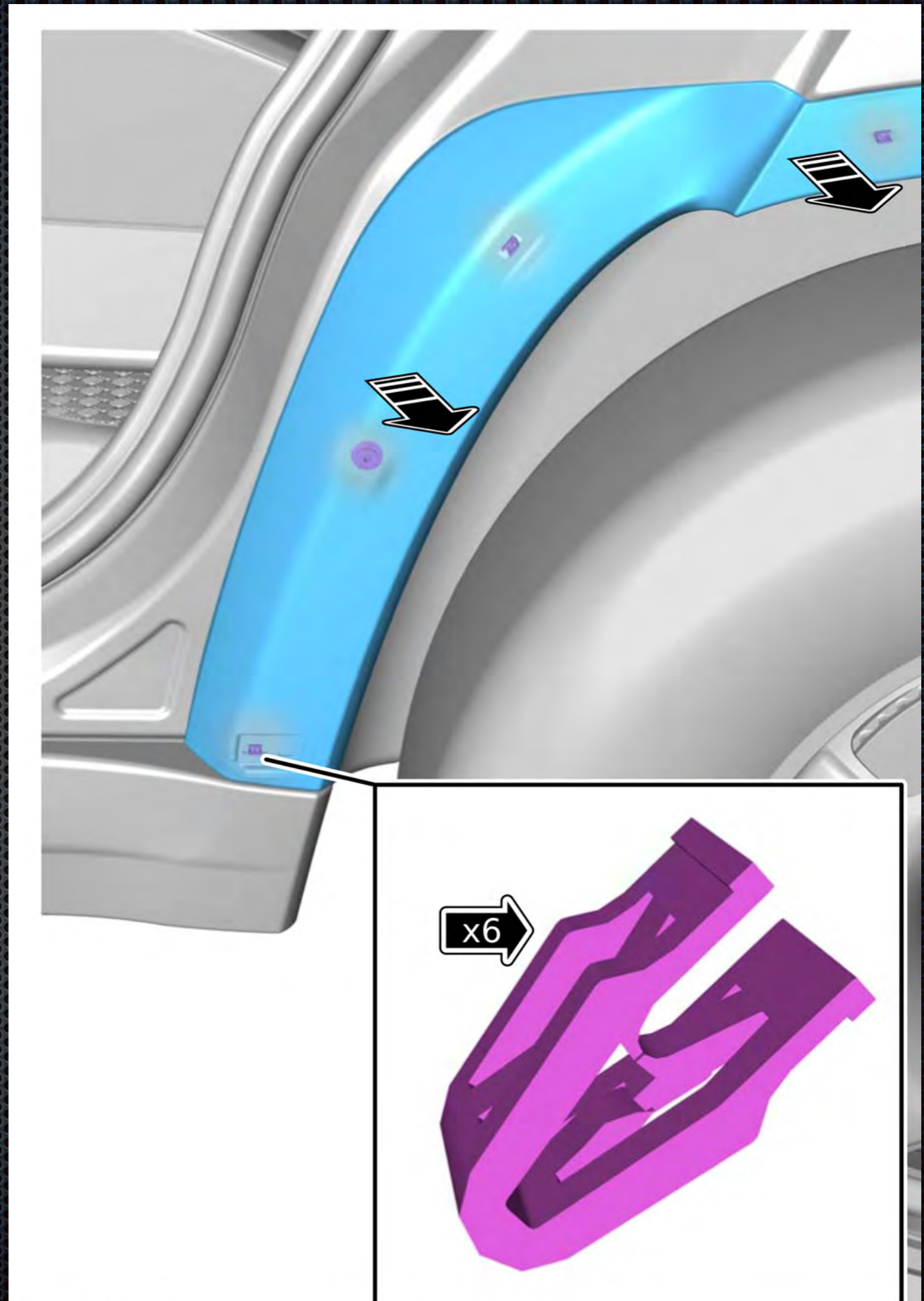


Remove the 9 lower rocker panel clips on both sides.

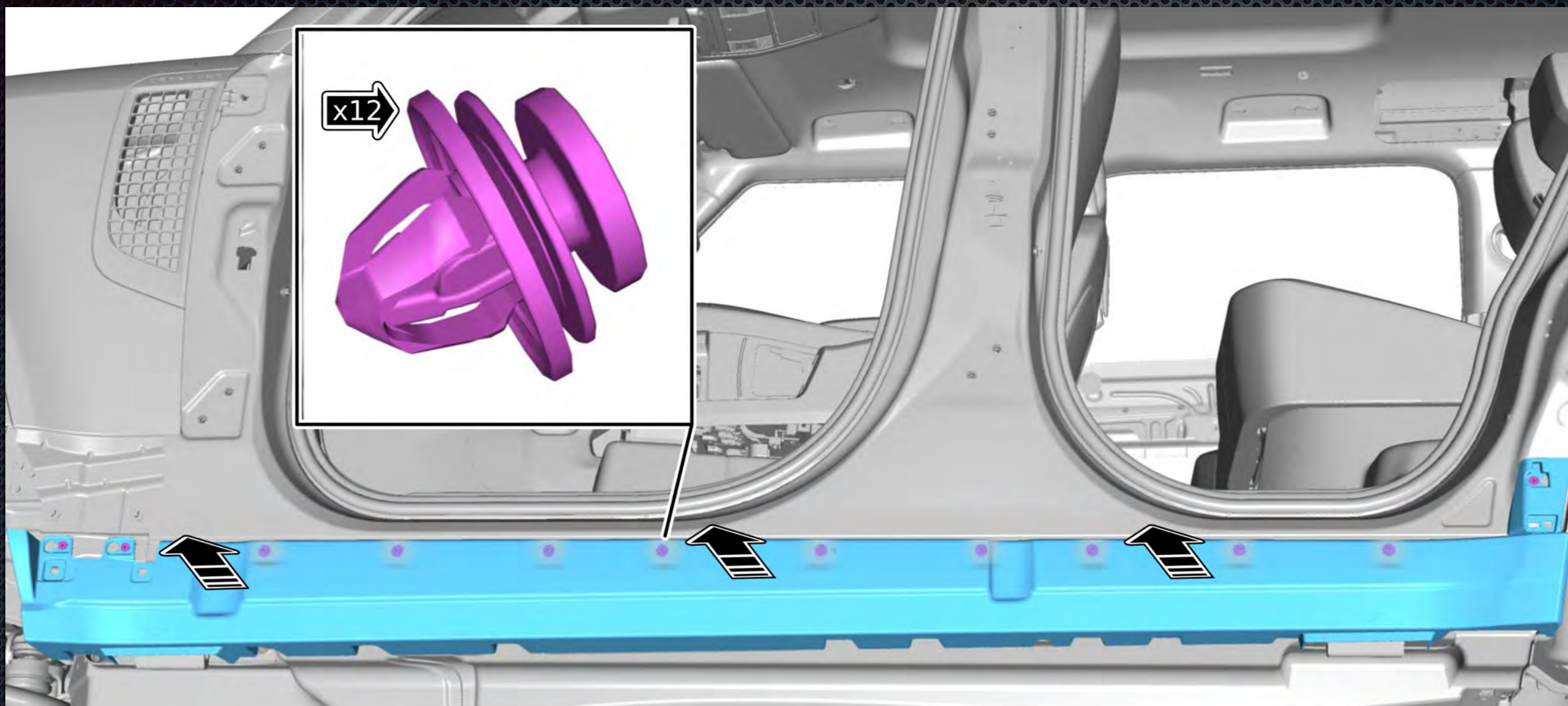


Gently pull rear fender flare forward a bit to release the lower clip that holds it on to the rocker panel.

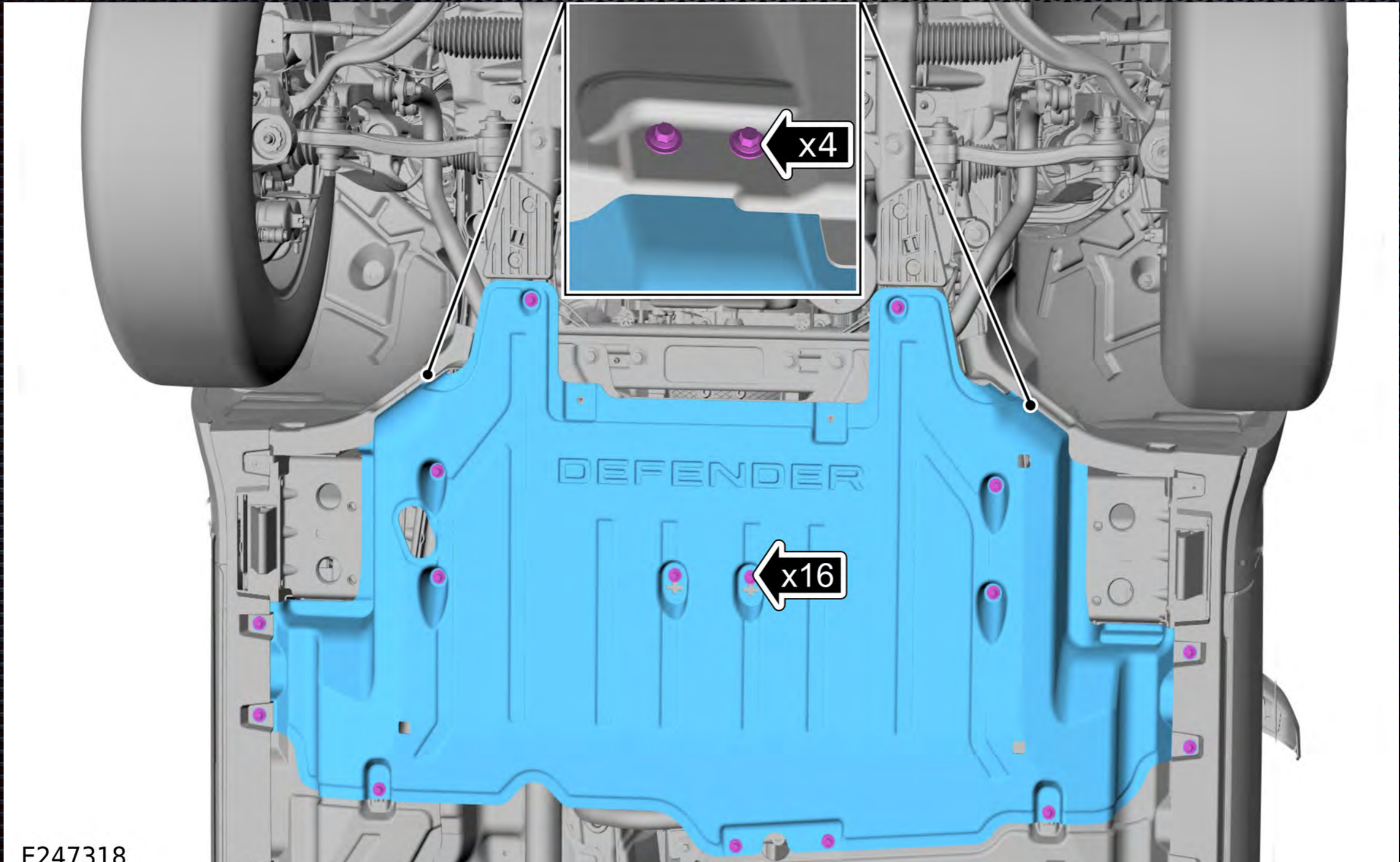
Note: You do not need to remove the fender, you just need to free the lower clip.



Pull rocker panel from body.

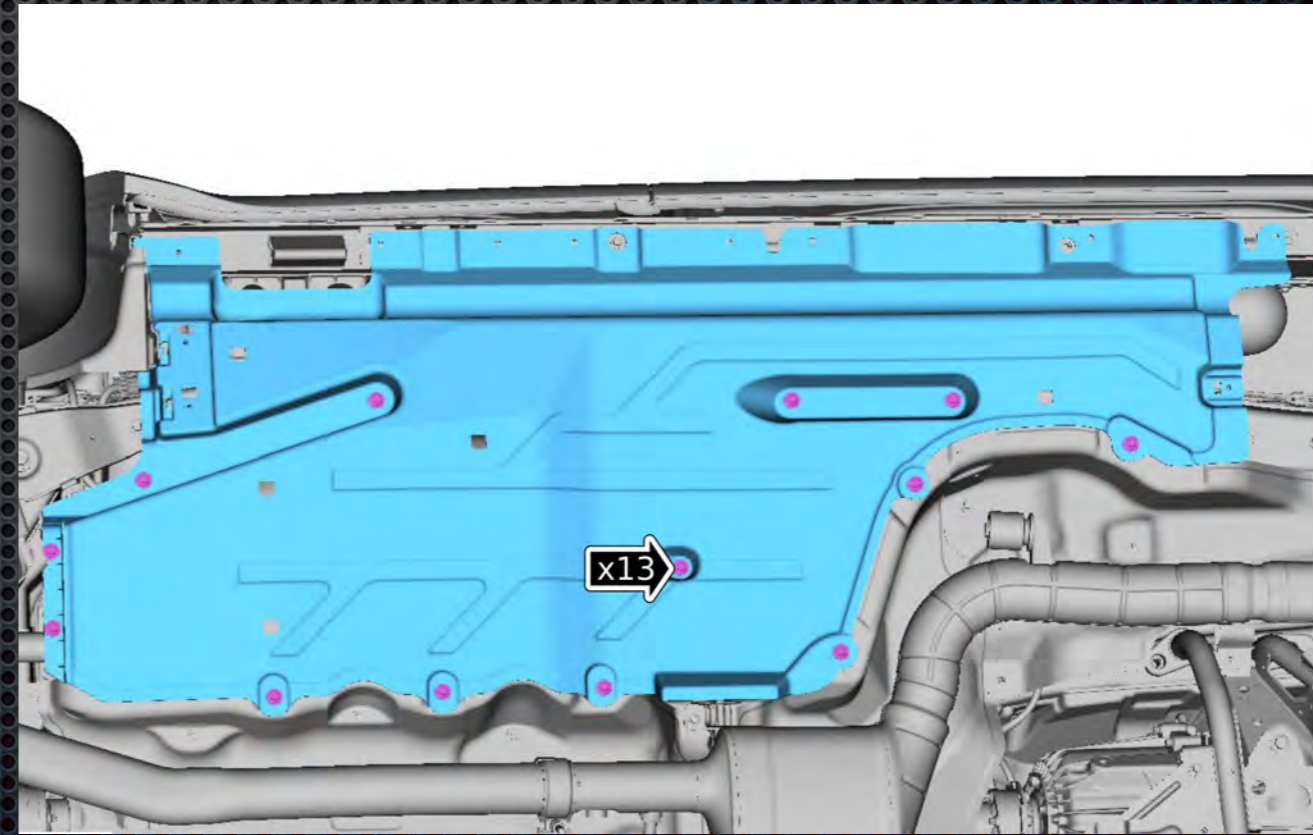
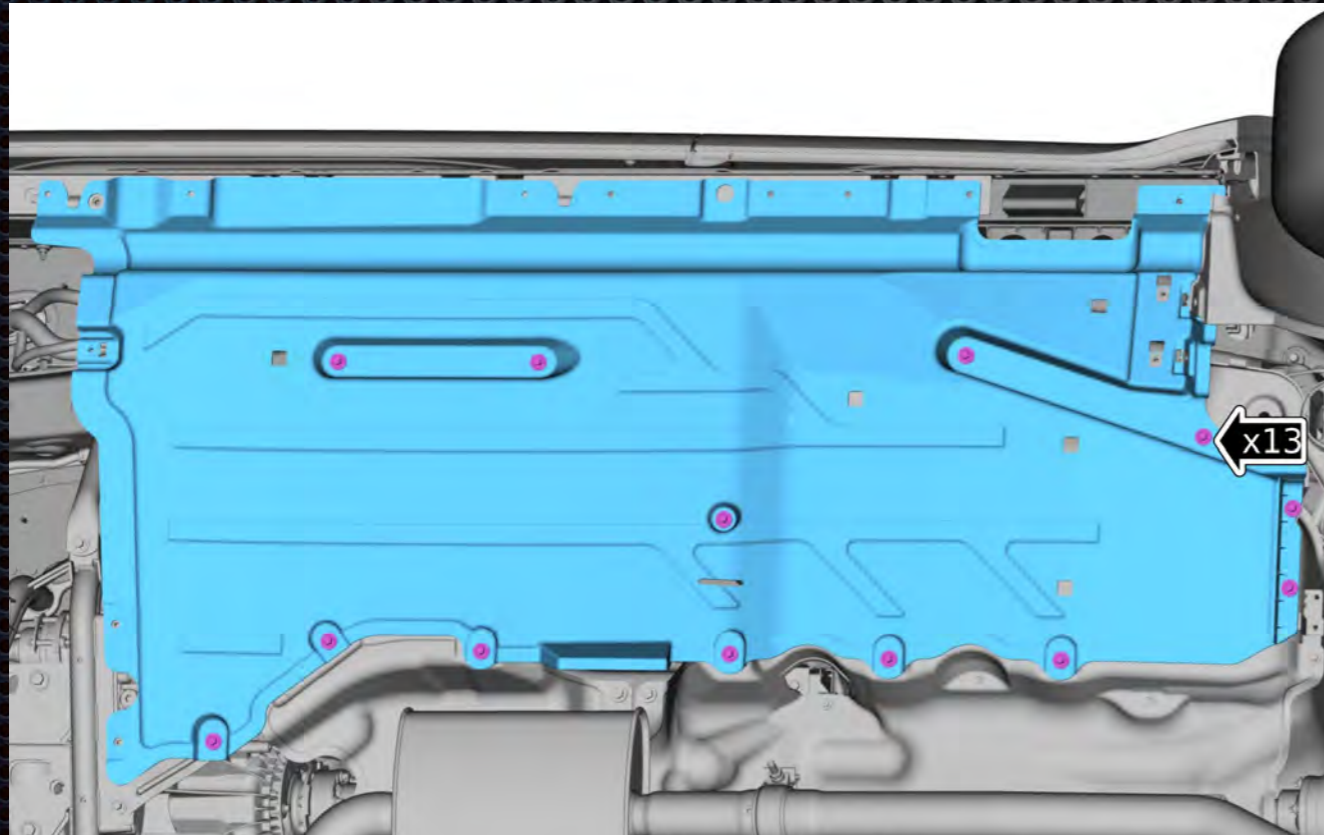


Remove the transmission splash guard.
Note: this will need to be reinstalled.



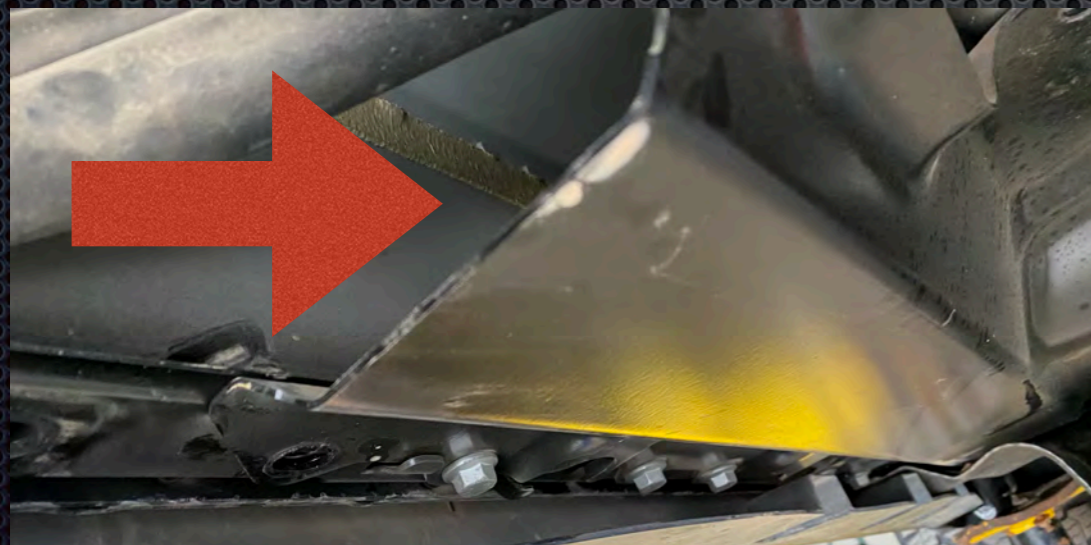
Remove the left and right fiber board under shields.

Note: Save the hardware you will need to reuse some for the sliders.



Remove the various metal supports that hold the fiber board from the sides that will interfere with mounting the sliders.

Continued on next page.



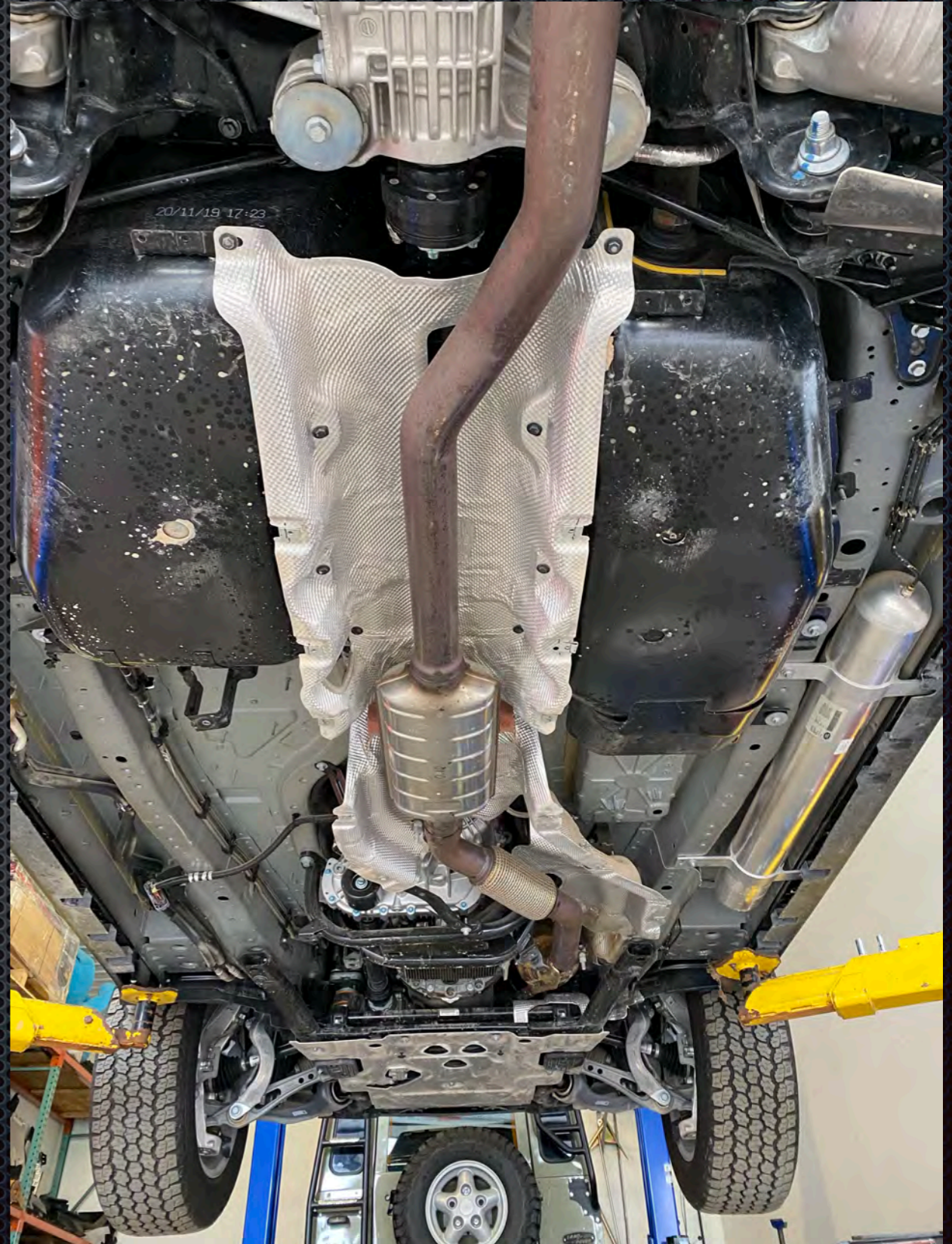
Remove the various metal supports that hold the fiber board from the sides that will interfere with mounting the sliders.



Before



After



Position the slider for install.



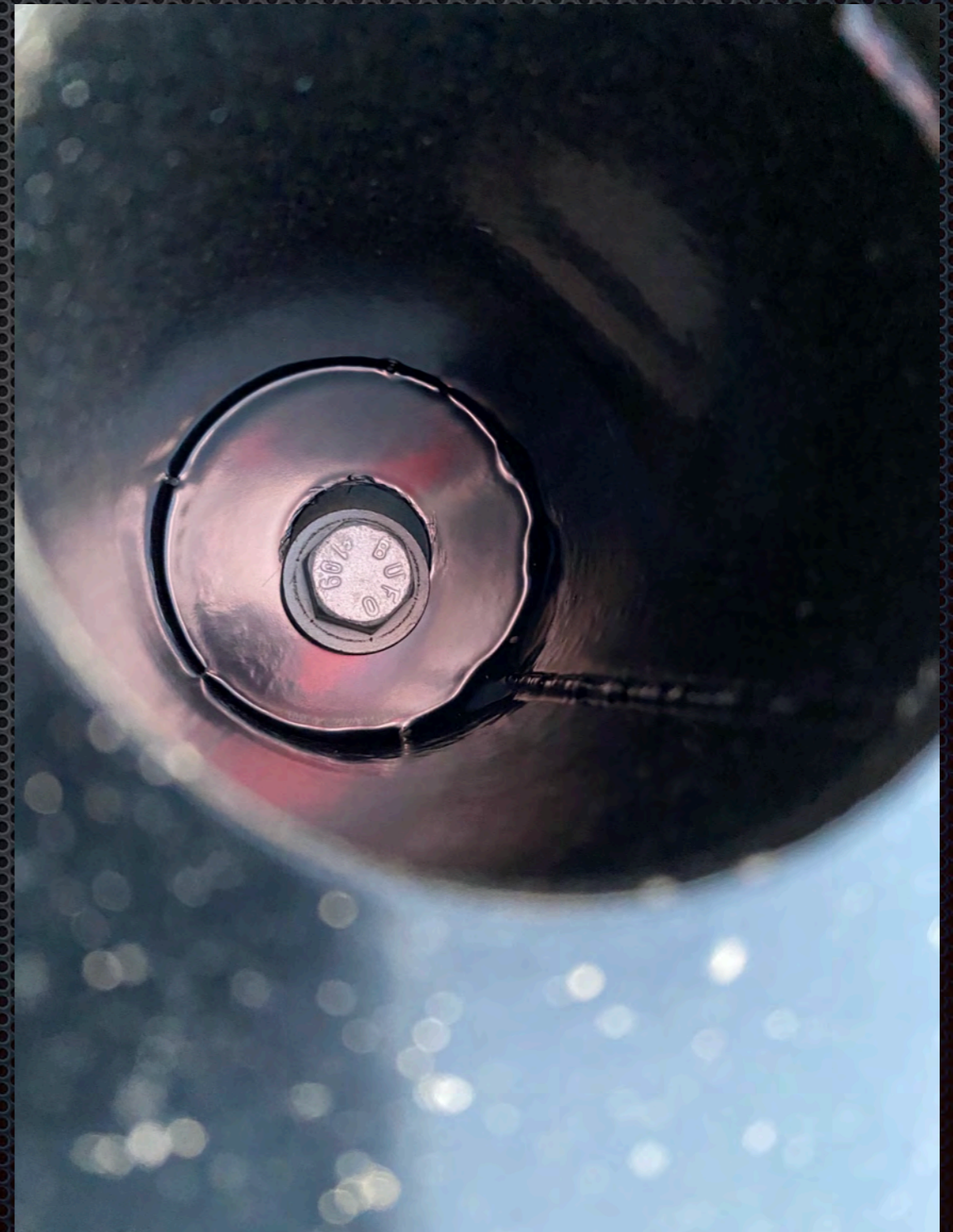
These are the 18 bolts you will reuse.
They are 2.5" long.



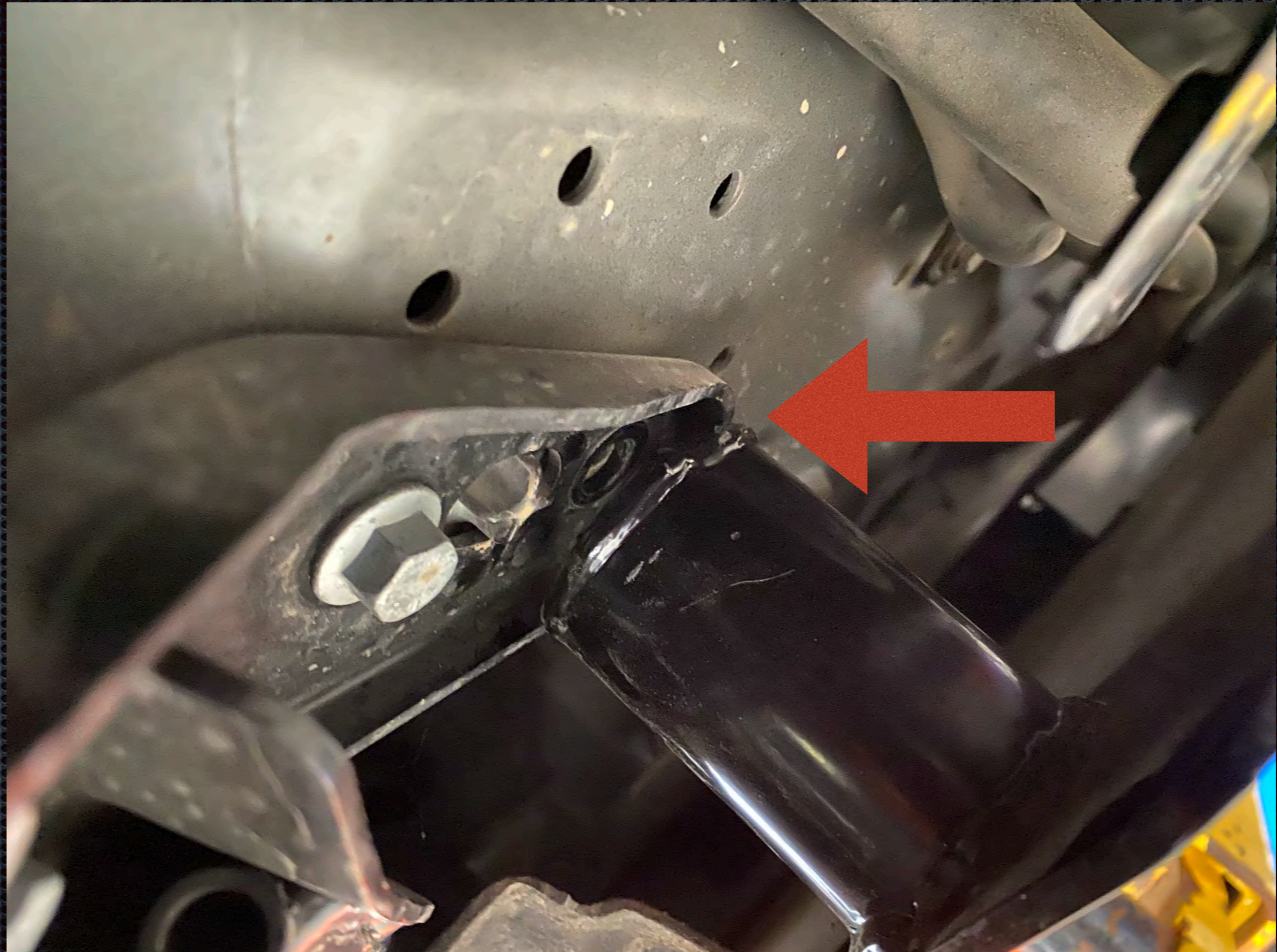
Align the sliders on the side of the truck. Make sure the small support tube is in the rear. The small tube will need the spacer to offset the slider down to avoid the body mount.



Align the support tubes first and insert the mounting bolts. **Do not tighten yet.**
First, align the the sill mounting bolts.



Spacer goes above the rear support tube.



Align and insert
the 5 sill bolts.
Do not fully tighten
yet.



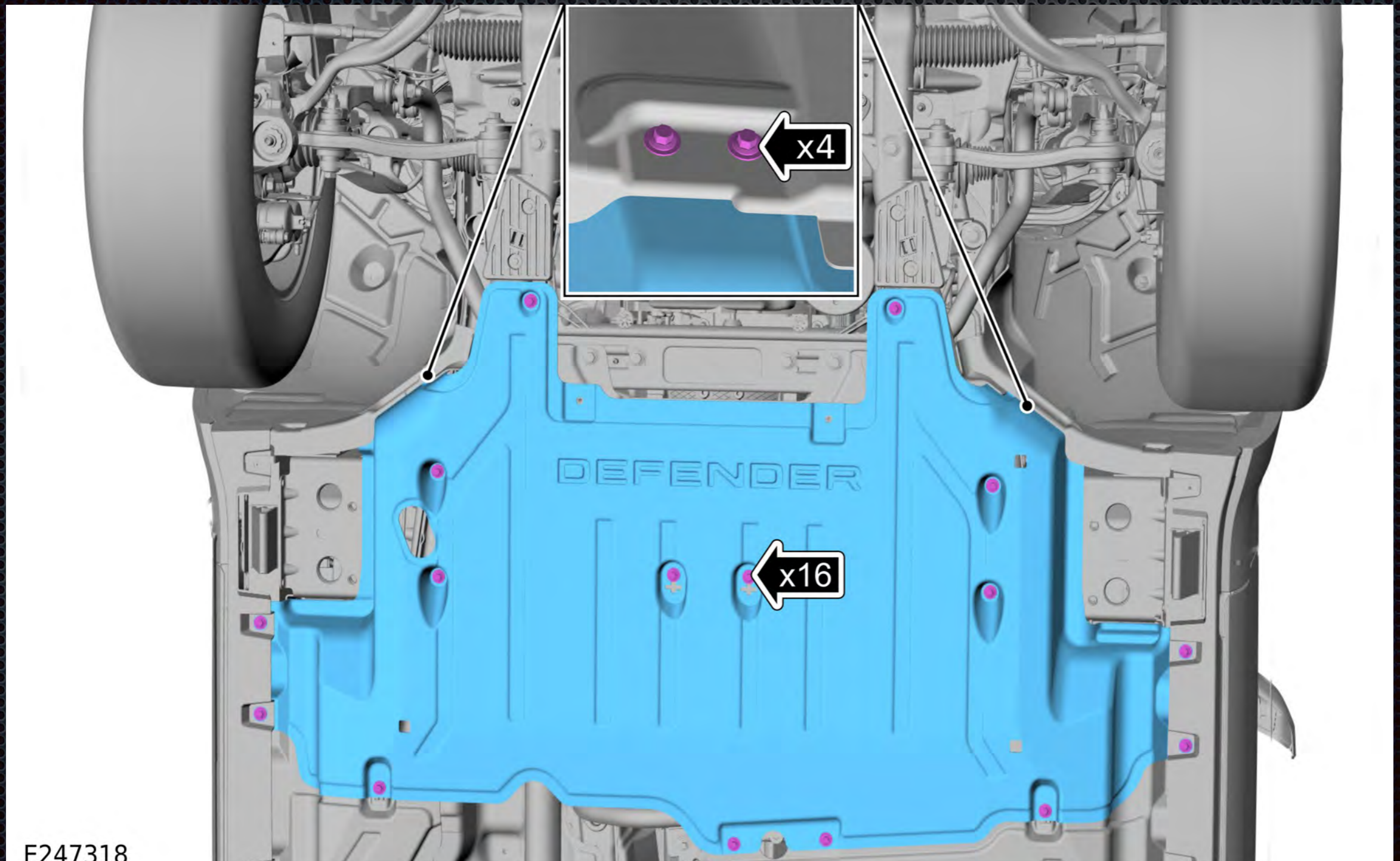
Slide in the center support brackets and align 2 bolt holes.
Note: These will vary from side to side and truck to truck.



With all the bolts in place,
tighten all the hardware down.



Reinstall transmission splash guard.



E247318

Remove all the plastic clips from the door sill.



There is a left and right hand sill trim piece.
The hole that is 8" back aligns with the hole
on the truck towards the front.



Drill the holes to
the rivet size
needed.



Using a rivnut tool, install the rivnuts.



Install the sill trim plate using the allen head bolts.



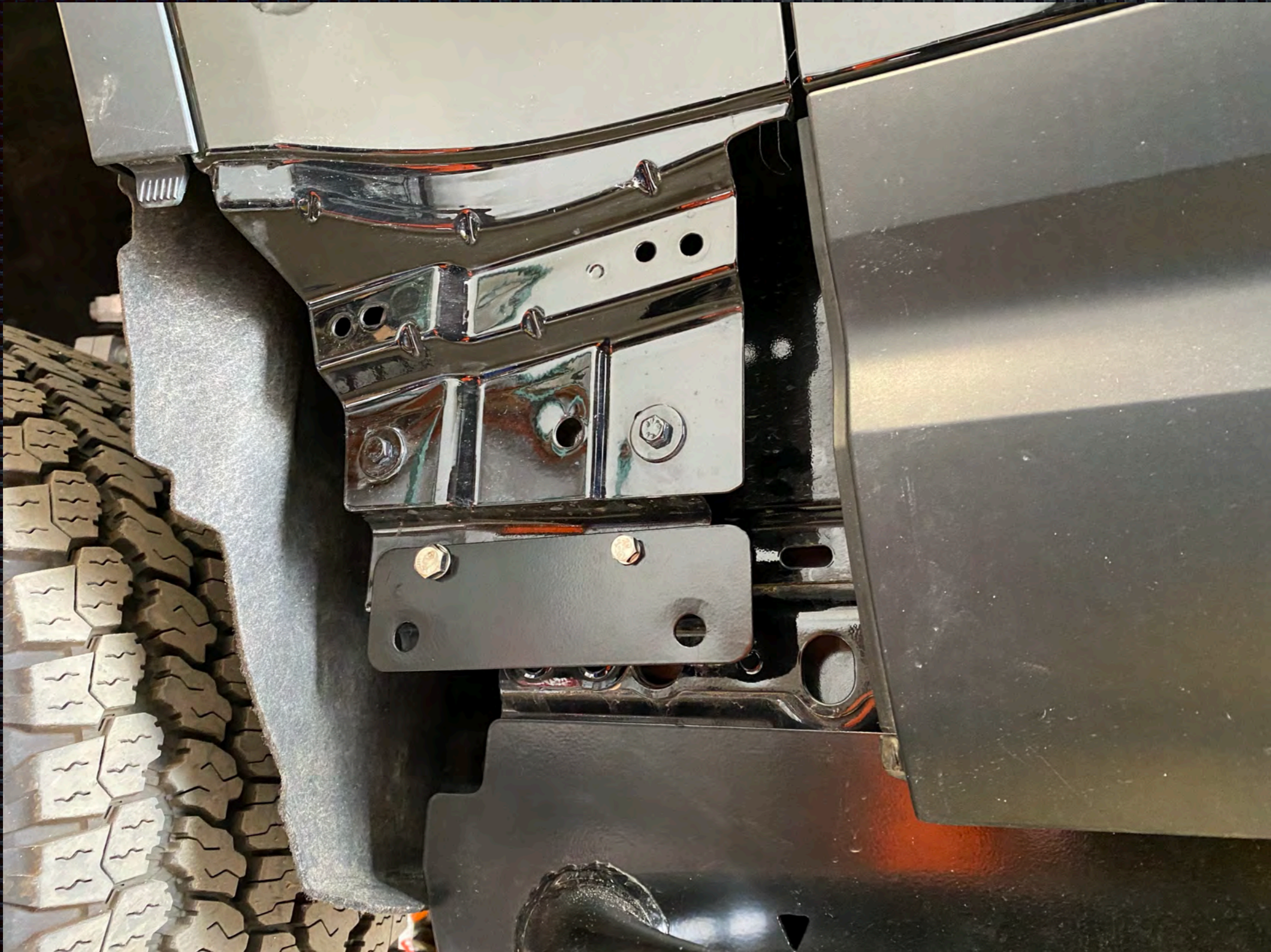
Mount the front fender moulding piece bracket to the fender.



Note the location of the spacer.



Tighten the bracket to the fender



Snap the front fender moulding into place.



The slack in the fender liner needs to be tucked and pinned back.



Use the self tapping screws to hold the liner in place.



Repeat the steps on the other side.



Installation complete.

