

Spring 2018

SANTA
BARBARA

Purnell

WORK
WEAR

Purnell is made for those who live and work with passion. It's for the movers, the makers, the innovators. You need clothes that keep up and still look sharp. Our apparel flows effortlessly with you from the place you get your hands dirty to the place you ink the deals or drink the beer -- whatever your preference, we're flexible.



Men's



Performance Knit Polo

#10103500

- 8 oz. midweight heather jersey knit
- Wicking properties
- Purnell neck seam tape
- Slim-fit torso
- 62% polyester / 33% cotton / 5% elastane
- Sizes S - XXL
- Retail \$68.00



Blue, Green, Grey



Performance Knit Short Sleeve Button-Up

#10103501

- 8 oz. midweight heather jersey knit
- Wicking properties
- Purnell neck seam tape
- 62% polyester / 33% cotton / 5% elastane
- Sizes S - XXL
- Retail \$68.00



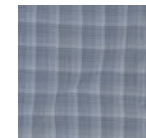
Blue, Green, Grey



4-Way Stretch Quick Dry Grey Plaid

#10104623

- 2 oz. lightweight yarn-dyed woven plaid
- Sun protective fabric UPF 30+
- 4-way stretch
- Quick dry and wicking properties
- 87% nylon / 13% elastane
- Sizes S - XXL
- Retail \$75.00



Grey



4-Way Stretch Quick Dry
Checked Plaid
#10104622

- 2 oz. lightweight yarn-dyed woven plaid
- Sun protective fabric UPF 30+
- 4-way stretch
- Quick dry and wicking properties
- Purnell neck seam tape
- 87% nylon / 13% elastane
- Sizes S - XXL
- Retail \$75.00



Blue, Green



Quick Dry Brenton Plaid
#10104624

- 3 oz. lightweight woven plaid
- Clean-edge seams
- Quick dry and wicking properties
- Comfort finish
- Purnell neck seam tape
- 84% polyester / 16% nylon
- Sizes S - XXL
- Retail \$75.00



Blue, Orange



Quick Dry Plaid
#10104602

- 3 oz. lightweight yarn-dyed woven plaid
- Clean-edge seams
- Enamel buttons
- Quick dry and wicking properties
- Purnell neck seam tape
- 55% nylon / 45% polyester
- Sizes S - XXL
- Retail \$72.00



Green, Blue



Sequoia Madras Plaid

#10104625

- 4 oz. lightweight yarn-dyed woven plaid
- Enzyme-washed, silicone softened
- Antique nickel buttons
- Clean-edge seams
- Purnell neck seam tape
- 100% cotton
- Sizes S - XXL
- Retail \$68.00



Brown



Evergreen Madras Plaid

#10104626

- 3 oz. lightweight yarn-dyed woven plaid
- Enzyme-washed, silicone softened
- Enamel Purnell buttons
- Clean-edge seams
- Purnell neck seam tape
- 100% cotton
- Sizes S - XXL
- Retail \$68.00



Green



Redwood Madras Plaid

#10104627

- 3 oz. lightweight yarn-dyed woven plaid
- Enzyme-washed, silicone softened
- Antique nickel buttons
- Clean-edge seams
- Purnell neck seam tape
- 100% cotton
- Sizes S - XXL
- Retail \$68.00



Brown



Short-Sleeved Classic Plaid

#00344013

- 3 oz. cotton woven plaid
- Enzyme-washed, silicone softened
- Left chest pocket
- 2" side vents
- Black contrast top-stitch
- 100% cotton
- Sizes S - XXL
- Retail \$68.00



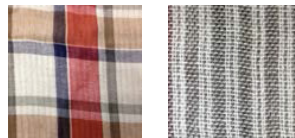
Black/White



Short-Sleeved Double-Sided Red Plaid Button-Up

#10104592

- 3 oz. lightweight double-sided plaid
- Enzyme-washed, silicone softened
- Left chest pocket
- Open-weave for extra comfort
- Classic ticking stripe contrast pattern on inside
- 100% cotton
- S - XXL
- Retail \$68.00



Red/Contrast Stripe



Short-Sleeved Indigo Chambray

#10104628

- 3 oz. lightweight yarn-dyed woven plaid
- Enzyme-washed, silicone softened
- Enamel Purnell buttons
- Clean-edge seams
- Purnell neck seam tape
- 100% cotton
- Sizes S - XXL
- Retail \$68.00



Indigo



Short-Sleeved Flax Shirt

#10104560

- 6 oz. midweight cotton / flax blend
- Enzyme-washed, silicone softened
- Left chest pocket
- Slim-fit torso
- Patterned neck seam tape
- Contrast top-stitching
- 70% cotton / 15% flax / 15% polyester
- Sizes S - XXL
- Retail \$68.00



Natural



Short-Sleeved Delmar Shirt

#10104579

- 6 oz. midweight, texturized cotton
- Enzyme-washed, silicone softened
- Left chest pocket
- 2" side vents
- Antique nickel buttons
- Contrast neck seam tape
- 100% cotton
- Sizes S - XXL
- Retail \$68.00



Navy



Short-Sleeved Harland Striped Shirt

#10104576

- 7 oz. midweight, woven flax blend
- Enzyme-washed, silicone softened
- Left chest pocket
- 2" side vents
- Contrast neck seam tape
- Antique nickel buttons
- 55 % flax / 45 % cotton
- Sizes S - XXL
- Retail \$68.00



Tan



Short-Sleeved Striped Shirt

#00344016

- 4 oz. lightweight, open weave flax blend
- Enzyme-washed, silicone softened
- Left chest pocket
- 2" side vents
- Hidden placket for clean front finish
- Contrast neck seam tape
- 55% flax / 45% cotton blend
- Sizes M - XXL
- Retail \$68.00



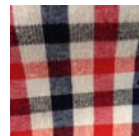
Indigo



Short-Sleeved Checkered Shirt

#10104577

- 6 oz. midweight cotton
- Enzyme-washed, silicone softened
- Left chest pocket
- 2" side vents
- Contrast neck seam tape
- 100% cotton
- Sizes M - XXL
- Retail \$68.00



Navy/Red



Ticking Stripe Shirt

#10104545

- 3 oz. lightweight yarn-dyed woven
- Enzyme-washed, silicone softened
- Left chest pocket
- Classic ticking stripe pattern
- Red contrast top-stitch
- 98% cotton / 2% elastane
- Sizes S - XXL
- Retail \$75.00



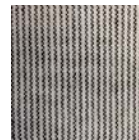
Black/White



Pinstripe Button-Up Shirt

#00314001

- 5 oz. midweight stretch chambray
- Enzyme-washed, silicone softened
- Left chest pocket
- Slim-fit torso
- Contrast chambray yoke and chambray lined cuffs
- 97% cotton / 3% elastane
- Sizes S - XXL
- Retail \$75.00



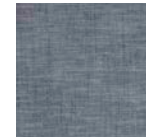
Black/White



Indigo Chambray Shirt

#00314003

- 5 oz. midweight stretch chambray
- Enzyme-washed, silicone softened
- Left chest pocket
- Slim-fit torso
- 98% cotton / 2% elastane
- Sizes S - XXL
- Retail \$75.00



Indigo



Double-Sided Chambray
Shirt
#10104539

- 3 oz. lightweight double-sided chambray
- Enzyme-washed and softened
- Left chest pocket
- Open-weave for extra comfort
- Contrast pinstripe pattern on inside
- 100% cotton
- Sizes S - XXL
- Retail \$72.00



Indigo/Contrast Stripe



Double-Sided Navy Plaid
Button-Up
#10104538

- 3 oz. lightweight double-sided plaid
- Enzyme-washed, silicon softened
- Left chest pocket
- Open weave for extra comfort
- Classic ticking stripe contrast pattern on inside
- 100% cotton
- Sizes S - XXL
- Retail \$72.00

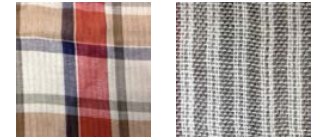


Navy/Contrast Stripe



Double-Sided Red Plaid
Button-Up
#10104544

- 3 oz. lightweight double-sided plaid
- Enzyme-washed, silicon softened
- Left chest pocket
- Open-weave for extra comfort
- Classic ticking stripe contrast pattern on inside
- 100% cotton
- Sizes S - XXL
- Retail \$72.00



Red/Contrast Stripe



Lawson Button-Up

#10104582

- 5 oz. open weave flax
- Enzyme-washed, silicone softened
- Contrast neck seam tape
- Left chest pocket
- 100% flax
- Sizes S - XXL
- Retail \$80.00



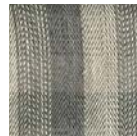
Herringbone Checkered Shirt

#10104580

- 4 oz. yarn-dyed cotton woven
- Enzyme-washed, silicone softened
- Bone contrast top stitch
- Contrast neck seam tape
- Left chest pocket
- 100% cotton
- Sizes S - XXL
- Retail \$75.00



Green



Olive



Heather Quick Dry 10" Short

#10106586

- 5 oz. lightweight stretch melange blend
- Single welt back pockets
- Plaid pocket lining
- Quick dry and wicking properties
- 10" inseam
- 95% polyester / 5% elastane
- Sizes 30" - 38"
- Retail \$68.00



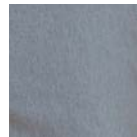
Grey



Heather Quick Dry 8" Short

#10106589

- 5 oz. lightweight stretch melange blend
- Single welt back pockets
- Plaid pocket lining
- Quick dry and wicking properties
- 8" inseam
- 95% polyester / 5% elastane
- Sizes 30" - 38"
- Retail \$68.00



Grey



Quick Dry 10" Indigo Short

#10106587

- 5 oz. lightweight mechanical stretch blend
- Single welt back pockets
- Quick dry and wicking properties
- Sun protective fabric UPF 30+
- 10" inseam
- 72% nylon / 28% polyester
- Sizes 30" - 38"
- Retail \$68.00



Indigo



Quick Dry 8" Indigo Short

#10106588

- 5 oz. lightweight mechanical stretch blend
- Single welt back pockets
- Quick dry and wicking properties
- Sun protective fabric UPF 30+
- 8" inseam
- 72% nylon / 28% polyester
- Sizes 30" - 38"
- Retail \$68.00



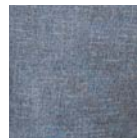
Indigo



Indigo Crosshatch Short

#10106584

- 7 oz. midweight crosshatch stretch blend
- Enzyme-washed, silicone softened
- Single welt back pockets
- Plaid pocket lining
- 10" inseam
- 72% polyester / 27% rayon / 1% elastane
- Sizes 30" - 38"
- Retail \$68.00



Indigo



Flax Blend Crosshatch Short

#10106582

- 7 oz. crosshatch flax blend
- Enzyme-washed, silicone softened
- Single welt back pockets
- Ticking stripe pocket lining
- 10" inseam
- 70% rayon / 30% flax
- Sizes 30" - 38"
- Retail \$68.00



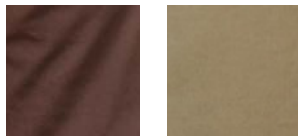
Grey



Weibull Distribution Short

#10106583

- 8 oz. midweight stretch canvas
- Enzyme-washed, silicone softened
- Reinforced large back pockets & side pocket for cell phone
- Triple-needle top stitching
- Gusseted crotch for ease of movement
- 12 1/2" Inseam
- 98% cotton / 2% elastane
- Sizes 30" - 38"
- Retail \$68.00



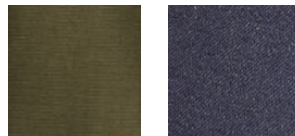
Brown, Olive



Vintage Twill 4-Pocket Pant

#10102548

- 9 oz. heavyweight stretch micro-twill
- Brushed and enzyme-washed for softness
- Two-tone finishing
- Chambray pocket lining
- Double needle top-stitch
- 98% cotton / 2% elastane
- Sizes 30" - 38" waist, 30" - 34" inseam
- Retail \$86.00



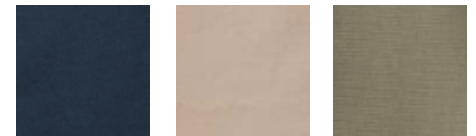
Forest, Indigo



Canvas 4-Pocket Pant

#342006

- 8 oz. midweight stretch canvas
- Enzyme-washed, silicone softened
- Plain back pocket
- Double needle top-stitch
- 98% cotton / 2% elastane
- Sizes 30" - 38" waist, 30" - 34" inseam
- Retail \$76.00



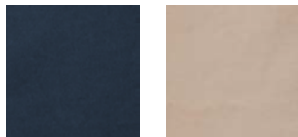
Navy, Tan, Olive



Canvas Cargo Pant

#00342005

- 8 oz. midweight stretch canvas
- Enzyme-washed, silicone softened
- Large 7" x 7" cargo pockets with snap closures
- Triple needle top-stitching
- 98% cotton / 2% elastane
- Sizes 30" - 38" waist, 30" - 34" inseam
- Retail \$76.00



Navy, Tan



Women's





Plaid Boyfriend Shirt

#10204598

- 3 oz. lightweight yarn-dyed woven plaid
- Enzyme-washed, silicone softened
- Matte black metal buttons
- Purnell neck seam tape
- 100% cotton
- Sizes XS - XL
- Retail \$68.00



Black/White



Boyfriend Shirt

#10204597

- 3 oz. lightweight yarn-dyed woven
- Enzyme-washed, silicone softened
- Contrast top stitching
- Carved wood buttons
- Purnell neck seam tape
- 100% cotton
- Sizes XS - XL
- Retail \$68.00



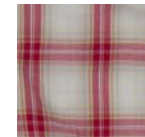
Blue



Red Madras Plaid Shirt

#10204596

- 3 oz. lightweight yarn-dyed woven plaid
- Enzyme-washed, silicone softened
- Pearl snaps
- Contrast neck seam tape
- 100% cotton
- Sizes XS - XL
- Retail \$64.00



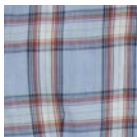
Red



Blue Madras Plaid Shirt

#10204595

- 3 oz. lightweight yarn-dyed woven plaid
- Enzyme-washed, silicone softened
- Pearl snaps
- Contrast neck seam tape
- 100% cotton
- Sizes XS - XL
- Retail \$64.00



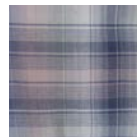
Blue



Pink/Navy Madras Plaid Shirt

#10204593

- 3 oz. lightweight yarn-dyed woven plaid
- Enzyme-washed, silicone softened
- Grey snaps
- Contrast neck seam tape
- 100% cotton
- Sizes XS - XL
- Retail \$64.00



Pink/Navy



Turquoise Madras Plaid Shirt

#10204594

- 3 oz. lightweight yarn-dyed woven plaid
- Enzyme-washed, silicone softened
- Pearl snaps
- Purnell neck seam tape
- 100% cotton
- Sizes XS - XL
- Retail \$64.00



Turquoise



Garnet Madras Plaid Shirt

#10204579

- 3 oz. midweight yarn-dyed woven plaid
- Enzyme-washed, silicone softened
- Clean-edge seams
- Pearl snaps
- Purnell neck seam tape
- 100% cotton
- Sizes XS - XL
- Retail \$64.00



Red



Classic Gingham Shirt

#10204524

- 2 oz. light cotton woven
- Enzyme-washed, silicone softened
- Left chest pocket
- Clean-edge seams
- Contrast neck seam tape
- White contrast top-stitch
- 100% cotton
- Sizes XS - XL
- Retail \$64.00



Navy/White



Checkered Shirt

#10204583

- 2 oz. lightweight, yarn dyed cotton button up
- Enzyme-washed, silicone softened
- Clean-edge seams
- Antique nickel-finished buttons
- Contrast neck seam tape
- 98% cotton / 2% elastane
- Sizes XS - XL
- Retail \$64.00



Aqua



Roll-Up-Sleeve Shirt

#10204564

- 2 oz. lightweight and sheer cotton woven
- Enzyme-washed, silicone softened
- Left chest pocket
- Carved wood buttons
- Adjustable sleeves
- 100% cotton
- Sizes XS - XL
- Retail \$64.00



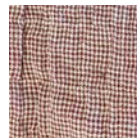
Light Blue



Roll-Up-Sleeve Checkered Shirt

#10204565

- 2 oz. lightweight soft seer-sucker gingham
- Enzyme-washed, silicone softened
- Left chest pocket
- Carved wood buttons
- Adjustable sleeves
- 99% cotton / 1% elastane
- Sizes XS - XL
- Retail \$64.00



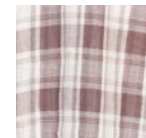
Burgundy/White



Double-sided Roll Up Sleeve

#10204581

- 5 oz. midweight double-sided yarn-dyed woven plaid
- Enzyme-washed, silicone softened
- Clean-edge seams
- Antique nickel-finished buttons
- 100% cotton
- Sizes XS - XL
- Retail \$64.00



Iron



Double-Sided Striped Tunic

#10204562

- 4 oz. lightweight double sided cotton
- Enzyme-washed, silicone softened
- Rouched back yoke for ease of movement
- 100% cotton
- Sizes XS - XL
- Retail \$64.00



Navy Stripe



Classic Chambray Shirt

#10204523

- 5 oz. midweight stretch chambray
- Enzyme-washed, silicone softened
- Left chest pocket
- Clean-edge seams
- Contrast neck seam tape
- Contrast top-stitching
- 98% cotton / 2% elastane
- Sizes XS - XL
- Retail \$64.00



Indigo



Short-Sleeved Pinstripe Shirt

#10204531

- 2 oz. lightweight cotton stretch dobby woven fabric
- Enzyme-washed, silicone softened
- Unique elastane threads add texture to subtle pinstripe pattern
- Pearl buttons
- 99% cotton / 1% elastane
- Sizes XS - XL
- Retail \$58.00



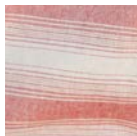
White/Grey



Striped Pullover

#10204582

- 5 oz. cotton woven
- Enzyme-washed, silicone softened
- Clean-edge seams
- Front kangaroo pocket
- Drawstring hood
- 100% cotton
- Sizes XS - XL
- Retail \$64.00



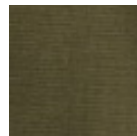
Red



Linen Field Jacket

#10208552

- 5 oz. midweight, open-weave flax blend
- Enzyme-washed, silicone softened
- Unlined with hidden waist drawstring
- Antique brass buttons
- 55% linen / 45% cotton
- Sizes S - XL
- Retail \$99.00



Olive

The Original K Arya Tank Top

Our patent-pending solution to every woman's secret wish to ditch the bra. It's comfortable enough to feel like you're wearing nothing at all but stylish enough that no one will know.

FIT - Versatile enough to wear by itself or as a layer

STRAPS - have "stays" to keep them from peeking out under tank top

BUILT-IN-BRA - innovative design combines the ease & comfort of a shelf bra with the structure & support of a traditional bra

CUPS - removable inserts for optional additional coverage

FABRIC - shell & bra cups made with cool, soft, poly/tencel/elastane blend

HEM - Figure-flattering scalloped hemline - ample length with enough coverage so it won't ride up



K Arya Classic Tank Top

#10203581

- 7 oz. poly blend knit
- Wicking properties
- Built-in support
- Scalloped hemline
- Back band and straps 90% polyester / 10% elastane
- Shell 79% polyester / 14% tencel / 7% elastane
- Sizes S - L
- Retail \$60.00



Black, Heather Grey



Karya Racerback Tank Top

#10203580

- 7 oz. poly blend knit
- Wicking properties
- Built-in support
- Removable foam inserts
- Back band and straps 90% poly / 10% elastane
- Shell 79% poly / 14% tencel / 7% elastane
- Sizes S - L
- Retail \$60.00



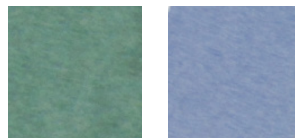
Black, Heather Grey



Raglan Tee

#10203584

- 4 oz. lightweight stretch knit
- Wicking finish
- Contrast topstitching
- Quarter length sleeve
- Purl stitch hem
- 90% cotton / 10% polyester
- Sizes XS - XL
- Retail \$34.00



Green/Grey, Blue/Grey



Heathered Tee

#10203585

- 4 oz. lightweight stretch knit
- Wicking finish
- Split neckline
- Cuffed sleeve
- Purl stitch hem
- 90% cotton / 10% polyester
- Sizes XS - XL
- Retail \$32.00



Heather - Black, Grey, Blue



Bamboo Knit Tank Dress

#10212573

- 6 oz. bamboo cotton blend knit
- Silicone washed for extra softness
- Scalloped front and back hem
- 70% bamboo / 30% cotton
- Sizes XS - XL
- Retail \$65.00



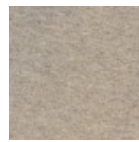
Santa Barbara Blue



Bamboo Knit Tank Dress

#10212572

- 7 oz. midweight stretch jersey
- Silicone washed for extra softness
- Scalloped front and back hem
- Red contrast stitching
- 67% bamboo / 33% poly
- Sizes XS - XL
- Retail \$68.00



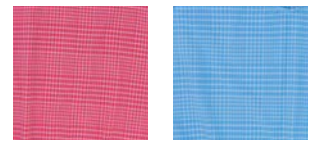
Grey



Quick Dry Summer Tunic

#10204592

- 2 oz. lightweight yarn-dyed woven plaid
- Quick dry properties
- 4-way stretch
- Loose-fitting hood
- Right-side seam pocket
- 88% nylon / 12% elastane
- Sizes XS - XL
- Retail \$75.00



Red, Turquoise



Quick Dry A-Line Skort

#10213582

- 4 oz. lightweight stretch woven
- Sun protective fabric UPF 30+
- Quick dry properties
- 100% polyester shell
- 87% polyester / 13% elastane lining
- Sizes XS - XL
- Retail \$68.00



Taupe



Quick Dry Circle Skort

#10213584

- 4 oz. lightweight stretch woven
- Sun protective fabric UPF 30+
- Quick dry properties
- 100% polyester shell
- 87% polyester / 13% elastane lining
- Sizes XS - XL
- Retail \$68.00



Turquoise



Jersey Knit Circle Skort

#10213583

- 7 oz. midweight heather knit
- Wicking properties
- Elastic waistband
- 79% poly / 14% tencel / 7% elastane shell
- 79% / 21% elastane lining
- Sizes XS - XL
- Retail \$62.00



Heather Grey, Heather Red



Quick Dry Wrap Around Skirt

#10213579

- 4 oz. nylon blend woven
- Adjustable hook and loop fastener
- Quick dry and wicking properties
- 75% nylon / 17% poly / 8% elastane
- Sizes 2 - 12
- Retail \$66.00



Navy



Chambray Skirt

#10213576

- 5 oz. stretch chambray
- Enzyme-washed, silicone softened
- Single back pocket
- Contrast top-stitching
- 17" length
- 97% cotton / 3% elastane
- Sizes 4 - 12
- Retail \$66.00



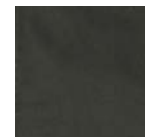
Indigo



Vintage Twill Skirt

#10213573

- 9 oz. heavyweight stretch micro twill
- Enzyme-washed, silicone softened
- Chambray lined waistband
- 15" length
- 98% cotton / 2% elastane
- Sizes 4 - 12
- Retail \$66.00



Forest



Hybrid Stretch Short

#10206578

- 5 oz. lightweight mechanical stretch woven
- Water resistant
- Contrast top stitching
- Mesh pocket lining
- 5" inseam
- 95% polyester / 5% polyurethane
- Sizes 2 - 12
- Retail \$65.00



Slate, Khaki



Quick Dry Short

#10206577

- 7 oz. midweight stretch blend
- Two single-welted back pockets
- Checkered pocket lining
- Quick dry and wicking properties
- 5" inseam
- 67% cotton / 27% nylon / 6% elastane
- Sizes 4 - 12
- Retail \$65.00



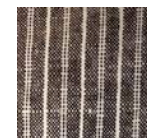
Olive, Khaki



Flax Short

#10206517

- 6 oz. soft-drape, linen blend casual shorts
- Enzyme-washed, silicone softened
- Versatile 5" inseam
- Two single-welted back pockets
- 55% linen / 45% cotton blend
- Sizes 2 - 12
- Retail \$62.00



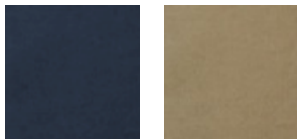
Black/White



Canvas Short

#10202513

- 8 oz. stretch cotton canvas
- Enzyme-washed, silicone softened
- Two single-welted back pockets
- Colorful plaid pocket lining
- Double-needle top stitching
- 5" inseam
- 98% cotton / 2% elastane
- Sizes 4 - 12
- Retail \$59.00



Navy, Olive



Chambray Short

#10206576

- 5 oz. stretch chambray
- Enzyme-washed, silicone softened
- Indigo chambray pocket lining
- Contrast top-stitching
- 5" inseam
- 97% cotton / 3% elastane
- Sizes 4 - 12
- Retail 62.00



Black



Quick Dry Gingham Pant

#10202524

- 3 oz. lightweight stretch woven
- Sun protective fabric UPF 30+
- Quick dry properties
- Hidden side zipper
- Ankle-length 25" inseam
- 90% nylon / 10% elastane
- Sizes 2 - 12
- Retail \$72.00



Blue/White



French Terry Pant

#10202523

- 8 oz. midweight french terry knit
- Contrast top stitching
- Silicone washed and brushed for softness
- Stain-resistant finish
- 28" inseam
- 98% cotton / 2% elastane
- Sizes 2 - 12
- Retail \$76.00



White, Slate



Striped Capri

#10202519

- 9 oz. midweight railroad stripe stretch denim
- Enzyme-washed, silicone softened
- Single welt back pockets
- Chambray pocket lining
- Heavy-duty double-needle top-stitching
- Ankle length 24" Inseam
- 98% cotton / 2% elastane
- Sizes 4 - 12
- Retail \$72.00



Navy/White



Dungaree Stripe

#10202515

- 9 oz. midweight railroad stripe stretch denim
- Enzyme-washed and silicone softened
- Heavy double-needle top stitching
- Chambray pocket lining
- 98% cotton / 2% elastane
- Sizes 4 - 12
- Retail \$76.00



Navy/White



Canvas Dungaree

#10202514

- 8 oz. stretch cotton canvas
- Enzyme-washed, silicon softened
- Colorful plaid pocket lining
- Heavy double-needle top stitching
- 98% cotton / 2% elastane
- Sizes 4 - 12
- Retail \$66.00



Tan



Vintage Twill 4-Pocket Pant

#10202521

- 9 oz. heavyweight stretch micro twill
- Brushed and enzyme-washed for softness
- Two tone finishing
- Chambray pocket lining
- 98% cotton / 2% elastane
- Sizes 4 - 12
- Retail \$76.00



Indigo

Contact Us

Email:

Customerservice@purnellgear.com

Phone:

800 667 0145

805 770 2437

805 845 7266

toll-free

main

fax (really?)

Snail mail:

101 E. Victoria St

Santa Barbara, CA 93101

Morse code:

.- / .-... -... / -... - / --- .. / -... / -...
-... .

SANTA
BARBARA

Purnell

WORK
WEAR



6-7-17