

SANTA BARBARA WORK WEAR

Purnell



Fall / Winter  
2017

Purnell is made for those who live and work with passion. It's for the movers, the makers, the innovators. You need clothes that keep up and still look sharp. Our apparel flows effortlessly with you from the place you get your hands dirty to the place you ink the deals or drink the beer -- whatever your preference, we're flexible.

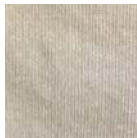


Stretch

## Corduroy Slate Shirt Jacket

#10108549

- 9 oz. midweight 21-wale stretch corduroy
- Enzyme-washed, silicone softened
- Antique nickel finish snaps
- Contrast neck seam tape
- 100% polyester plaid fleece lining
- 98% cotton / 2% elastane body
- S - XXL
- Retail \$90.00



Slate



Stretch

## Indigo Shirt Jacket

#10108550

- 11 oz. midweight stretch velour
- Enzyme-washed, silicone softened
- Antique nickel finish snaps
- Contrast neck seam tape
- 100% polyester plaid fleece lining
- 98% cotton / 2% elastane body
- S - XXL
- Retail \$90.00



Indigo



Stretch

## Corduroy Sand Shirt Jacket

#10108548

- 9 oz. midweight 21-wale stretch corduroy
- Enzyme-washed, silicone softened
- Antique nickel finish snaps
- Contrast neck seam tape
- 100% polyester plaid fleece lining
- 98% cotton / 2% elastane body
- S - XXL
- Retail \$90.00



Sand



Heavyweight Moleskin Shirt

#10108546

- 11 oz. heavyweight moleskin
- Enzyme-washed, silicone softened
- Left chest pocket
- Contrast chambray on yoke and button placket
- Antique brass buttons
- 100 % cotton
- S - XXL
- Retail \$82.00



Brown, Indigo



Canvas Sherpa-Lined Jacket

#00347002

- Durable 8 oz. midweight stretch canvas duck
- Enzyme-washed, silicone softened
- Poly sherpa lining
- 98% cotton / 2% elastane body
- M - XXL
- Retail \$130.00



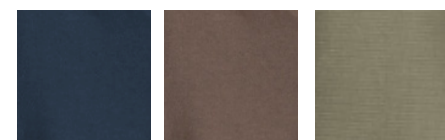
Navy, Tan, Olive



Hoodie for Backpacks

#00346002

- 9 oz. cotton / poly combed jersey-knit fleece
- Chin-high collar layers perfectly under a jacket
- Dropped shoulder seams for added comfort
- Zippered front kangaroo pocket
- Easy access zippered sleeve cell phone pocket
- 80% cotton / 20% poly
- S - XXL
- Retail \$76.00



Navy, Brown, Olive



Quick Dry

Insulating

Brown Performance Plaid Flannel

#10104617

- 5 oz. midweight yarn-dyed woven plaid flannel
- Brushed for softness
- Insulating
- Quick dry
- Wrinkle free
- 100% hollow-yarn polyester
- S - XXL
- Retail \$76.00



Brown/Blue



Quick Dry

Insulating

Red Performance Plaid Flannel

#10104621

- 4 oz. midweight yarn-dyed woven plaid flannel
- Brushed for softness
- Insulating
- Quick dry
- Purnell neck seam tape
- 100% hollow-yarn polyester
- S - XXL
- Retail \$76.00



Red/Cream



Quick Dry

Insulating

Lake Performance Plaid Flannel

#10104616

- 4 oz. midweight yarn-dyed woven plaid flannel
- Brushed for softness
- Insulating
- Quick dry
- Purnell neck seam tape
- 100% hollow-yarn polyester
- S - XXL
- Retail \$76.00



Green



Quick Dry

Insulating

Horizon Performance Plaid Flannel

#10104619

- 4 oz. midweight yarn-dyed woven plaid flannel
- Brushed for softness
- Insulating
- Quick dry
- Wrinkle free
- 100% hollow-yarn polyester
- S - XXL
- Retail \$76.00



Navy



Quick Dry

Reflection Performance Plaid Flannel

#10104615

- 5 oz. midweight yarn-dyed woven plaid flannel
- Quick dry
- Purnell neck seam tape
- 55% cotton / 45% polyester
- S - XXL
- Retail \$76.00



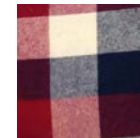
Teal/Grey



Burgundy/Navy Plaid Flannel

#10104598

- 6 oz. midweight yarn-dyed plaid woven flannel
- Washed and silicone softened
- Left chest pocket
- Enamel buttons
- Contrast neck seam tape
- Bone contrast top-stitching
- 100% cotton
- S - XXL
- Retail \$76.00



Burgundy/Navy



Blue/Cream Plaid Flannel

#10104597

- 6 oz. midweight yarn-dyed plaid woven flannel
- Washed and silicone softened
- Left chest pocket
- Contrast neck seam tape
- Bone contrast top-stitching
- 100% cotton
- S - XXL
- Retail \$76.00



Blue/Cream



Brick/Olive Plaid Flannel

#10104596

- 6 oz. midweight yarn-dyed plaid woven flannel
- Washed and silicone softened
- Left chest pocket
- Antique nickel finish buttons
- Contrast neck seam tape
- Taupe contrast top-stitching
- 100% cotton
- S - XXL
- Retail \$76.00



Brick/Olive



Vintage Plaid Button-Up

#10104543

- 3 oz. lightweight yarn-dyed plaid
- Enzyme-washed, silicone softened
- Left chest pocket
- Metal finish buttons
- 100% cotton
- S - XXL
- Retail \$72.00



Dark Grey



Heavyweight Stretch Chambray  
#10104620

- 9 oz. heavyweight yarn-dyed woven stretch chambray
- Enzyme-washed, silicone softened
- Contrast inside neck yoke and sleeve cuffs
- 54% cotton / 43% polyester / 3% elastane
- S - XXL
- Retail \$76.00



Black, Dark Olive



Stretch

Stretch Twill Shirt  
#10104587

- 7 oz. midweight stretch twill woven
- Enzyme-washed, silicone softened
- Left chest pocket
- Enamel buttons
- 97% cotton / 3% elastane
- S - XXL
- Retail \$76.00



Light Olive



Wicking

Jersey Knit Button-Up  
#10103010

- 8 oz. midweight jersey knit blend
- Wicking properties
- Purnell neck seam tape
- 62% polyester/ 33% cotton / 5% elastane
- S - XXL
- Retail \$72.00



Heather Green, Heather Grey





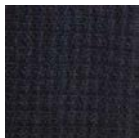
Wicking

Insulating

Bamboo Thermal

#00343007

- 7 oz. midweight stretch soft waffle knit
- Ribbed collar
- Reinforced seams
- Natural wicking properties
- 70% bamboo / 30% cotton blend
- S - XXL
- Retail \$45.00



Navy



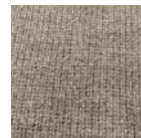
Wicking

Insulating

Heavyweight Bamboo Thermal

#10103008

- 10 oz. heavyweight stretch waffle knit
- Enzyme-washed, silicone softened
- Ribbed collar
- Reinforced seams
- Natural wicking properties
- 98% bamboo / 2% elastane
- S - XXL
- Retail \$55.00



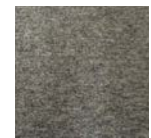
Heather Grey



French Terry Pullover

#10103009

- 9 oz. midweight stretch French terry knit
- Enzyme-washed, silicone softened
- Ribbed collar
- Contrast top-stitching
- 95% polyester / 5% elastane
- M - XXL
- Retail \$72.00



Olive, Heather Grey

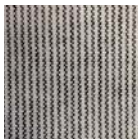


Stretch

Pinstripe Button-Up Shirt

#00314001

- 5 oz. midweight stretch chambray
- Enzyme-washed, silicone softened
- Left chest pocket
- Slim-fit torso
- Contrast chambray yoke and cuffs
- 97% cotton / 3% elastane
- M - XXL
- Retail \$76.00



Black/White



Stretch

Indigo Chambray Shirt

#00314003

- 5 oz. midweight stretch chambray
- Enzyme-washed, silicone softened
- Left chest pocket
- Slim-fit torso
- 98% cotton / 2% elastane
- S - XXL
- Retail \$76.00



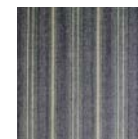
Indigo



Striped Chambray Shirt

#10104583

- 5 oz. midweight cotton woven
- Enzyme-washed, silicone softened
- Contrast neck seam tape
- Left chest pocket
- 100% cotton
- S - XXL
- Retail \$76.00



Blue/Green Stripe

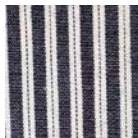


Lightweight Stretch

### Ticking Stripe Shirt

#10104545

- 3 oz. lightweight yarn-dyed woven
- Enzyme-washed, silicone softened
- Left chest pocket
- Classic ticking stripe pattern
- Red contrast top-stitch
- 98% cotton / 2% elastane
- S - XXL
- Retail \$76.00



Black/White



### Herringbone Checkered Shirt

#10104580

- 4 oz. midweight yarn-dyed cotton woven
- Enzyme-washed, silicone softened
- Bone contrast top stitch
- Contrast neck seam tape
- Left chest pocket
- 100% cotton
- S - XXL
- Retail \$76.00



Olive

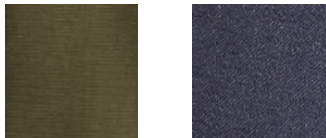


Stretch

Vintage Twill 4-Pocket Pant

#10102548

- 9 oz. heavyweight stretch micro-twill
- Brushed and enzyme-washed for softness
- Two-tone finishing
- Chambray pocket lining
- Double needle top-stitch
- 98% cotton / 2% elastane
- 30" - 38" waist, 30" - 34" inseam
- Retail \$86.00



Forest, Indigo



Stretch

Twill Flat Front Pant

#00342012

- 8 oz. midweight stretch twill
- Enzyme-washed, silicone softened
- Flat front pockets
- Chambray lined waistband and pockets
- Double welted back pockets
- 98% cotton / 2% elastane
- 28" - 38" waist, 30" - 34" inseam
- Retail \$86.00



Charcoal, Khaki

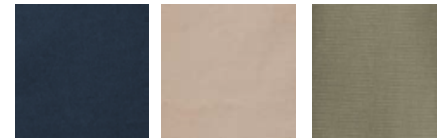


Stretch

Canvas 4-Pocket Pant

#00342006

- 8 oz. midweight stretch canvas
- Enzyme-washed, silicone softened
- Plain back pocket
- Double needle top-stitch
- 98% cotton / 2% elastane
- 30" - 38" waist, 30" - 34" inseam
- Retail \$76.00



Navy, Tan, Olive



Stretch

## Canvas Cargo Pant

#00342005

- 8 oz. midweight stretch canvas
- Enzyme-washed, silicone softened
- Large 7" x 7" cargo pockets with snap closures
- Triple needle top-stitching
- 98% cotton / 2% elastane
- 30" - 38" waist, 30" - 34" inseam
- Retail \$76.00



Navy, Tan



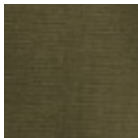




Linen Field Jacket

#10208552

- 5 oz. midweight, open-weave flax blend
- Enzyme-washed, silicone softened
- Unlined with hidden waist drawstring
- Antique brass buttons
- 55% linen / 45% cotton
- S - XL
- Retail \$99.00



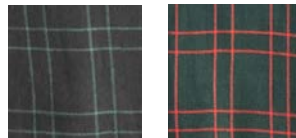
Olive



Plaid Button-Up Tunic

#10204589

- 4 oz. lightweight yarn-dyed woven plaid
- Enzyme-washed, silicone softened
- Left chest pocket
- Roll-up sleeves
- Side seam pockets
- 65% rayon / 35% polyester
- XS - XL
- Retail \$69.00



Navy/Green, Navy/Red



Quick Dry

Insulating

Fuschia Performance Plaid Flannel

#10204584

- 5 oz. midweight yarn-dyed woven plaid
- Brushed for softness
- Insulating
- Quick dry
- Wrinkle free
- 100% hollow-yarn polyester
- XS - XL
- Retail \$72.00



Fuschia





Quick Dry

Insulating

Green Performance Plaid

#10204587

- 4 oz. midweight yarn-dyed woven plaid
- Brushed for softness
- Insulating
- Quick dry
- Purnell neck seam tape
- 100% hollow-yarn polyester
- XS - XL
- Retail \$72.00



Green



Quick Dry

Insulating

Black/Yellow Performance Plaid

#10204586

- 4 oz. midweight yarn-dyed woven plaid
- Brushed for softness
- Insulating
- Quick dry
- Purnell neck seam tape
- 100% hollow-yarn polyester
- XS - XL
- Retail \$72.00



Black/Yellow



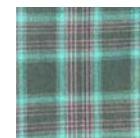
Quick Dry

Insulating

Turquoise Performance Plaid Flannel

#10204591

- 5 oz. midweight yarn-dyed woven plaid
- Brushed for softness
- Insulating
- Quick dry
- Wrinkle free
- 100% hollow-yarn polyester
- XS - XL
- Retail \$72.00



Turquoise



Blue Plaid Flannel Shirt

#10204569

- 5 oz. midweight brushed cotton woven plaid
- Enzyme-washed, silicone softened
- Antique brass flower buttons
- 100% cotton
- XS - XL
- Retail \$64.00



Blue/Green



Vintage Flannel Button-Up Shirt

#10204548

- 5 oz. midweight yarn-dyed plaid
- Enzyme-washed, silicone softened
- Clean-edge seams
- Antique brass flower buttons
- Contrast top-stitching
- 100% cotton
- S - XL
- Retail \$64.00



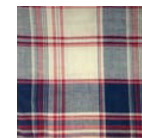
Red



Double Placket Madras Plaid Shirt

#10204526

- 3 oz. lightweight, yarn-dyed cotton plaid
- Enzyme-washed, silicone softened
- Contrast neck seam tape
- Navy contrast fabric on cuff and back yoke
- Antique brass buttons
- 100% cotton
- S - XL
- Retail \$64.00



Navy/Tan



## Classic Chambray Shirt

#10204523

- 5 oz. midweight stretch chambray
- Enzyme-washed, silicone softened
- Left chest pocket
- Clean-edge seams
- Contrast neck seam tape
- Contrast top-stitching
- 98% cotton / 2% elastane
- XS - XL
- Retail \$64.00



Indigo



Wicking

Fair Isle Knit Skirt

#10213580

- 8 oz. midweight Fair Isle patterned knit
- Wicking properties
- Side slit
- Elastic waistband
- 65% cotton / 32% polyester / 3% elastane
- XS - XL
- Retail \$68.00



Grey/White, Maroon, Black/White



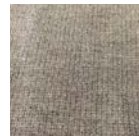
Wicking

Insulating

Long Knit Skirt

#10213577

- 10 oz. heavyweight heathered bamboo waffle knit
- Enzyme-washed, silicone softened
- Contrast top-stitching
- Side slit
- Extra-height elastic waistband
- 98% bamboo / 2% elastane
- 2 - 12
- Retail \$76.00



Heather Grey

# Purnell Ambassador

Megan Birney - President of Unite to Light, providing low cost solar lighting to communities without access to electricity.





Knit Roll-Up Sleeve

#10203583

- 7 oz. midweight polyester blend knit
- Wicking properties
- Left chest pocket
- Adjustable sleeves
- 79% polyester / 14% tencel / 7% elastane
- XS - XL
- Retail \$64.00



Heather Red, Heather Grey



French Terry Tunic

#10202574

- 9 oz. midweight stretch terry knit
- Enzyme-washed, silicone softened
- Right-side seam pocket
- Contrast top-stitching
- 96% cotton / 4% elastane
- S - XL
- Retail \$75.00



Heather Grey, Heather Blue, Oatmeal



Grey Wool Zip Skirt

#10213575

- 21 oz. wool blend
- Rip stop lining
- Zig zag contrast top-stitch
- Asymmetrical zipper closure
- 60% wool / 35% polyester / 5% other
- 4 - 12
- Retail \$76.00



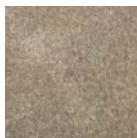
Grey



Brown Wool Zip Skirt

#10213578

- 21 oz. wool blend
- Rip stop lining
- Contrast double needle top-stitch
- Asymmetrical zipper closure
- 60% wool / 40% polyester
- 2 - 12
- Retail \$76.00



Brown



Wool Circle Skirt

#10213581

- 12 oz. wool melange rib knit blend
- Clean edge seams
- Elastic waistband
- Length 18"
- 19% wool / 62% acrylic / 17% polyester / 2% elastane
- 2 - 12
- Retail \$76.00



Light Grey



Wicking

Tribal Crossover Tights

#10207511

- 9 oz. midweight interlock jersey knit
- Wicking properties
- Hidden waistband pocket
- Flatlock stitching
- 79% recycled polyester / 21% elastane
- XS - XL
- Retail \$72.00



Black/White



Wicking

Insulating

Plaid Crossover Tights

#10207509

- 9 oz. midweight interlock jersey knit
- Wicking properties
- Hidden waistband pocket
- Flatlock stitching
- 79% recycled polyester / 21% elastane
- XS - XL
- Retail \$72.00



Navy/White



Wicking

Floral Crossover Tights

#10207513

- 9 oz. midweight interlock jersey knit
- Wicking properties
- Hidden waistband pocket
- Flatlock stitching
- 79% recycled polyester / 21% elastane
- XS - XL
- Retail \$72.00



Red



Wicking

Diamond Crossover Tights

#10207510

- 9 oz. midweight interlock jersey knit
- Wicking properties
- Hidden waistband pocket
- Flatlock stitching
- 79% recycled polyester / 21% elastane
- XS - XL
- Retail \$72.00



Grey/White





Wicking

Camo Leggings

#10207503

- 11 oz. plaid-patterned jacquard knit
- Wicking properties
- Silicone softened
- Contrast elastic rib waistband
- 70% polyester / 25% cotton / 5% elastane
- S - XL
- Retail \$39.00



Light Grey, Dark Grey

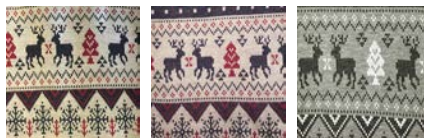


Wicking

Winter Print Base Layer Leggings

#10207502

- 8 oz. reindeer-patterned knit
- Wicking properties
- Extra-height waistband
- Silicone softened
- 70% polyester / 25% cotton / 5% elastane
- S - XL
- Retail \$39.00



Navy/Cream, Navy/Grey, Black/Grey

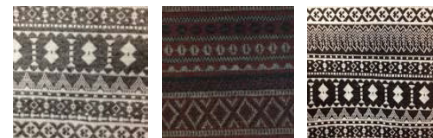


Wicking

Nordic Print Base Layer Leggings

#10202554

- 8 oz. Fair Isle-patterned knit
- Wicking properties
- Extra-height waistband
- Silicone softened
- 70% polyester / 25% cotton / 5% elastane
- S - XL
- Retail \$39.00



Grey/White, Maroon, Black/White

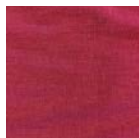
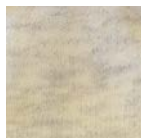


Wicking

Drop-Shoulder Knit Top

#10203578

- 7 oz. midweight polyester blend knit
- Wicking properties
- Left chest pocket
- 79% polyester / 14% tencel / 7% elastane
- XS - XL
- Retail \$38.00



Heather Grey, Oatmeal, Heather Red



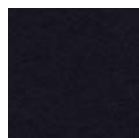
Wicking

Support

KArya Racerback Tank Top

#10203580

- 7 oz. poly blend knit
- Wicking properties
- Built-in support
- Back band and straps 90% poly / 10% elastane
- Shell 79% poly / 14% tencel / 7% elastane
- S - L
- Retail \$60.00



Black, Heather Grey



Wicking

Support

KArya Classic Tank Top

#10203581

- 7 oz. poly blend knit
- Wicking properties
- Built-in support
- Scalloped hemline
- Back band and straps 90% polyester / 10% elastane
- Shell 79% polyester / 14% tencel / 7% elastane
- S - L
- Retail \$60.00



Black, Heather Grey

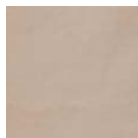


Stretch

Canvas Dungaree

#10202514

- 8 oz. stretch cotton canvas
- Enzyme-washed, silicone softened
- Colorful plaid pocket lining
- Heavy double-needle top stitching
- 98% cotton / 2% elastane
- 4 - 12
- Retail \$66.00



Tan



Stretch

Vintage Twill 4-Pocket Pant

#10202521

- 9 oz. heavyweight stretch micro twill
- Brushed and enzyme-washed for softness
- Two tone finishing
- Chambray pocket lining
- 98% cotton / 2% elastane
- 4 - 12
- Retail \$76.00



Indigo



Stretch

Dungaree Stripe

#10202515

- 9 oz. midweight railroad stripe stretch denim
- Enzyme-washed, silicone softened
- Heavy-duty double-needle top-stitching
- Chambray pocket lining
- 98% cotton / 2% elastane
- 4 - 12
- Retail \$76.00



Navy/White

# New Zealand Possum Beanie

On a trip to New Zealand a few years back, I came across the tale of the brushtail possum, an underloved animal (to say the least), with a 100-year track record of ecological mayhem. The possum arrived in New Zealand in the late 1800s, unchallenged by natural predators and obviously delighted at the easy prey of kokako, kereru and kiwi – New Zealand’s iconic national bird. Its numbers grew over the next century to more than 70 million, wreaking havoc on native vegetation and food crops along the way.

But the possum’s dark legacy has a bright future, as the animal has recently been embraced for its incredibly soft, mink-like fur. Possum fur has a hollow core that’s naturally insulating, keeping you cooler in the summer and warmer in the winter. Recognizing that the possum’s ultra-fine fibers are ideal for complex knitwear, we developed a collection of headgear that look fantastic and feel even better.

- Brent Dehlsen, Designer in Residence



Insulating

Ribbed NZ Brushtail Possum  
Knit Beanie  
#10308009

- 7 gauge knit blend
- Naturally resistant to dirt, stain, and odors
- 40% NZ Brushtail possum / 50% merino / 10% nylon
- One size
- Retail \$45.00



Forest Green, Grey, Red, Purple



Insulating

NZ Brushtail Possum Knit Hat  
#10308010

- 7 gauge knit blend
- Naturally resistant to dirt, stain, and odors
- 40% NZ Brushtail possum / 50% merino / 10% nylon
- One size
- Retail \$50.00



Forest Green, Grey, Red, Purple

## Purnell

Our family heritage is rooted in solving global problems through sustainable product innovation. We're bringing the same engineering mindset to making clothes. Our classic apparel transitions from desk to trail, city to field -- all the ways you live. No changing necessary.

Co-founder Brent Dehlsen, leading a successful wind energy company, was unsatisfied with the everyday gear available to outfit the "techs" who spent their days hundreds of feet off the ground in crazy weather conditions.

He visualized something they could wear both on and off the job and wanted some specific design tweaks – like added stretch to canvas and rearranged pockets and seams so they'd fit better under a safety harness.

Years later that vision became real when he joined forces with sister-in-law and retail veteran Brita Womack. Together, they searched for new ideas, rethought common clothing assumptions, and were rewarded with an incredible response to their first designs.

Even though those first styles were "officially" workwear, they were clearly just as appealing for people heading out on the trail or in to town. They knew they'd hit a nerve, so they applied their design approach to creating a fresh collection of revisited classics for men and women.

