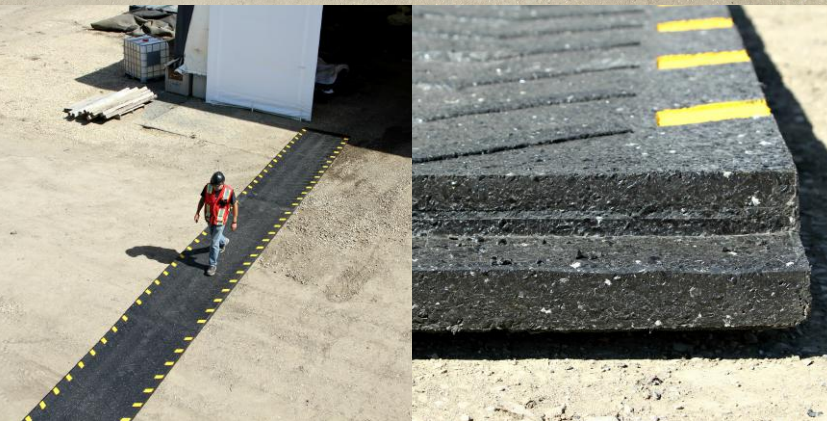


# ECO-WALK INDUSTRIAL WALKWAYS



## DETAILS:

- Size: 14' L x 46" W x 3.2" |  
4.27 m L x 1.17 m W x 0.08 m
- Weight: 950 lbs [+/- 50 lbs] |  
431 kg [+/- 23 kg]
- Applications: Industrial walkways, Road crossings and more
- Shipping: 42 Mats per 20 Overseas Container | FOB, Legal, Alberta, Canada.



## ADVANTAGES:

- Permanent and **portable** and offer the durability required to withstand constant pedestrian and vehicular traffic.
- Reflective yellow tape** on edges to promote visibility and safety.
- Flexible** and will not crack or separate from frost heaves like concrete.
- All season**, all weather durability including snow plowing and de-icing.
- Safe, **anti-slip** surface can reduce liability claims.
- Unique over/underlap design to help **prevent weed growth** while also reinforcing proper installation.
- Surfaces are comfortable to walk on and will be sure to put a "**bounce**" into everyone's step
- Made from **recycled rubber tires**, the structures resist corrosion and can handle great loads

