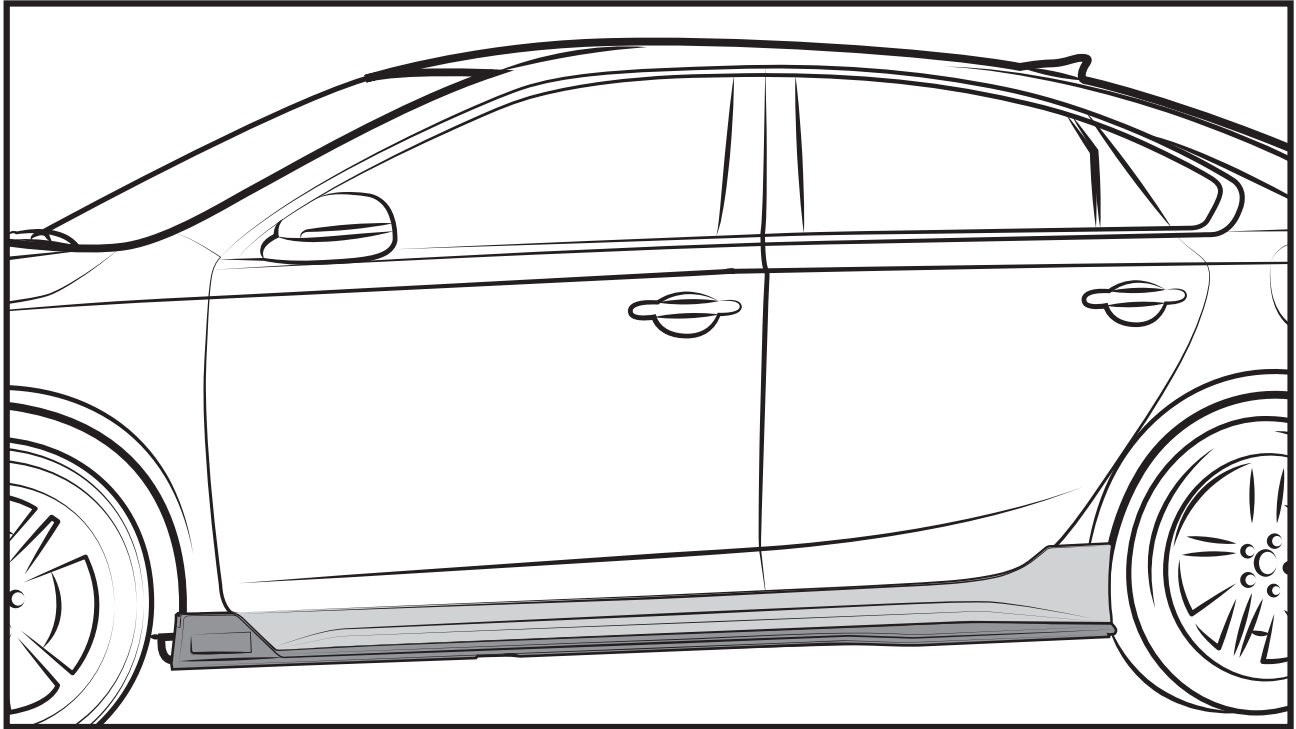


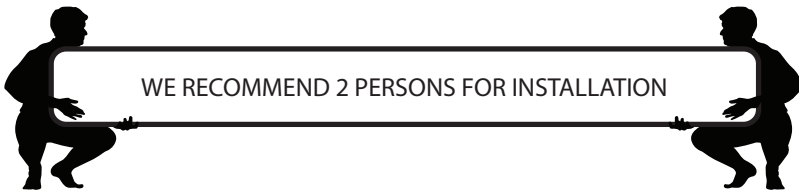
**SIDE SKIRTS SET**  
PART # AD : K105A06


  
**READ CAREFULLY BEFORE  
INSTALLATION**



  
**WASH BEFORE INSTALLING**



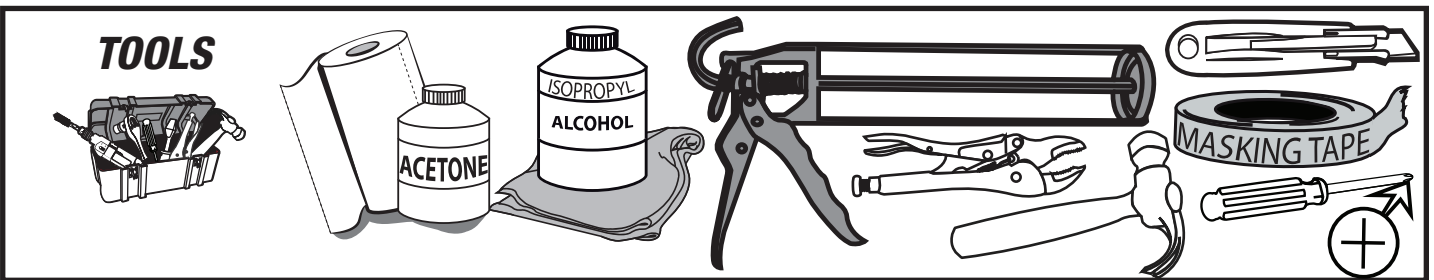
**AFTER INSTALLING**








**DO NOT WASH CAR**  **DRIVE SLOWLY 25 mph max**

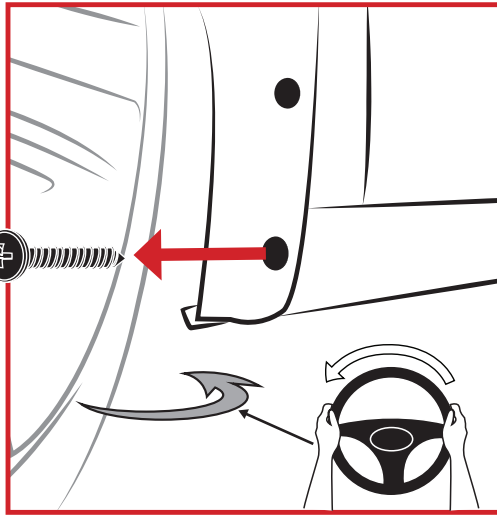
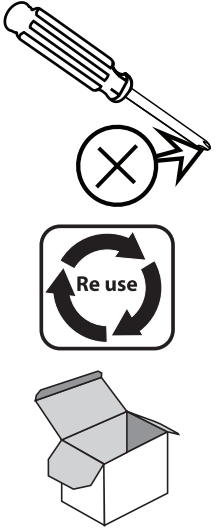
**24 hrs**



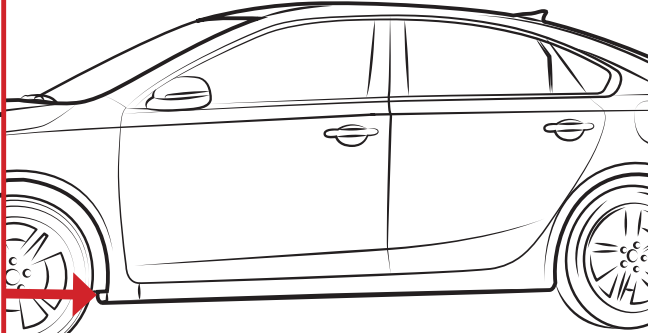
<b>CHECK LIST</b>		<b>*ALREADY INSTALLED ON THE PART</b>	
<b>ITEM</b>	<b>DESCRIPTION</b>	<b>DRAWING</b>	<b>AMOUNT</b>
<b>A</b>	*VHB TAPE		<b>N/A</b>
<b>B</b>	SILVER ZINC AXIS CLIP 68111 169		<b>2 PCS</b>
<b>C</b>	SCREW WÜRTH 3.9 x 25MM		<b>2 PCS</b>
<b>D</b>	POLYURETHANE ADHESIVE 310 ml		<b>1 PC</b>
<b>F</b>	WASHER NICKEL-PLATED 3/16"		<b>2 PCS</b>

The ideal temperature range of the part and the vehicle when installing must be 16°C (60°F) to 40°C (104°F), this guarantees a correct assembly.

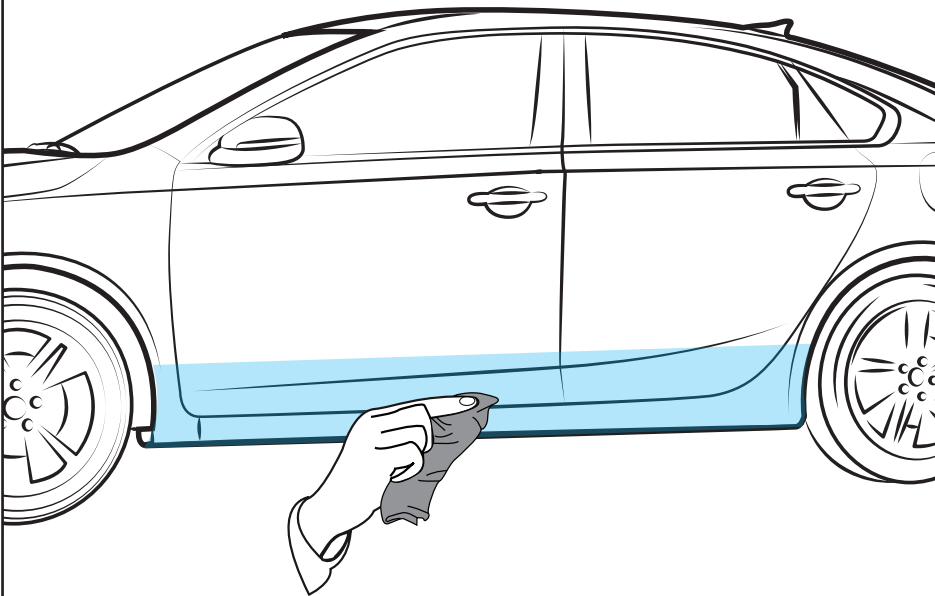
**1 REMOVE ORIGINAL FIXATION**



**! TURN TIRE**



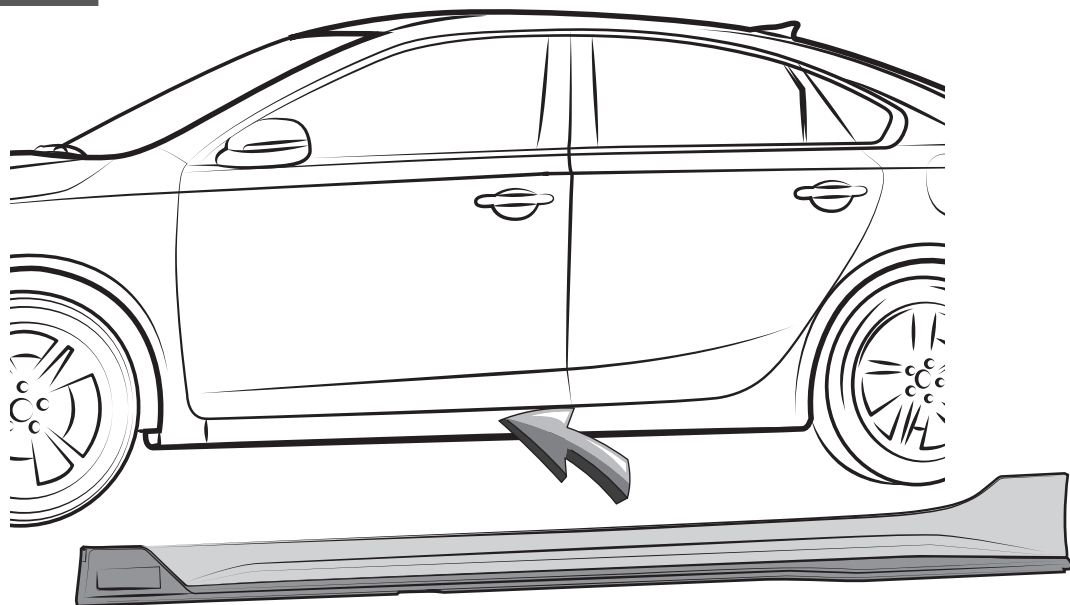
**2 CLEAN**



**! DO NOT HAVE ACETONE  
USE ALCOHOL**

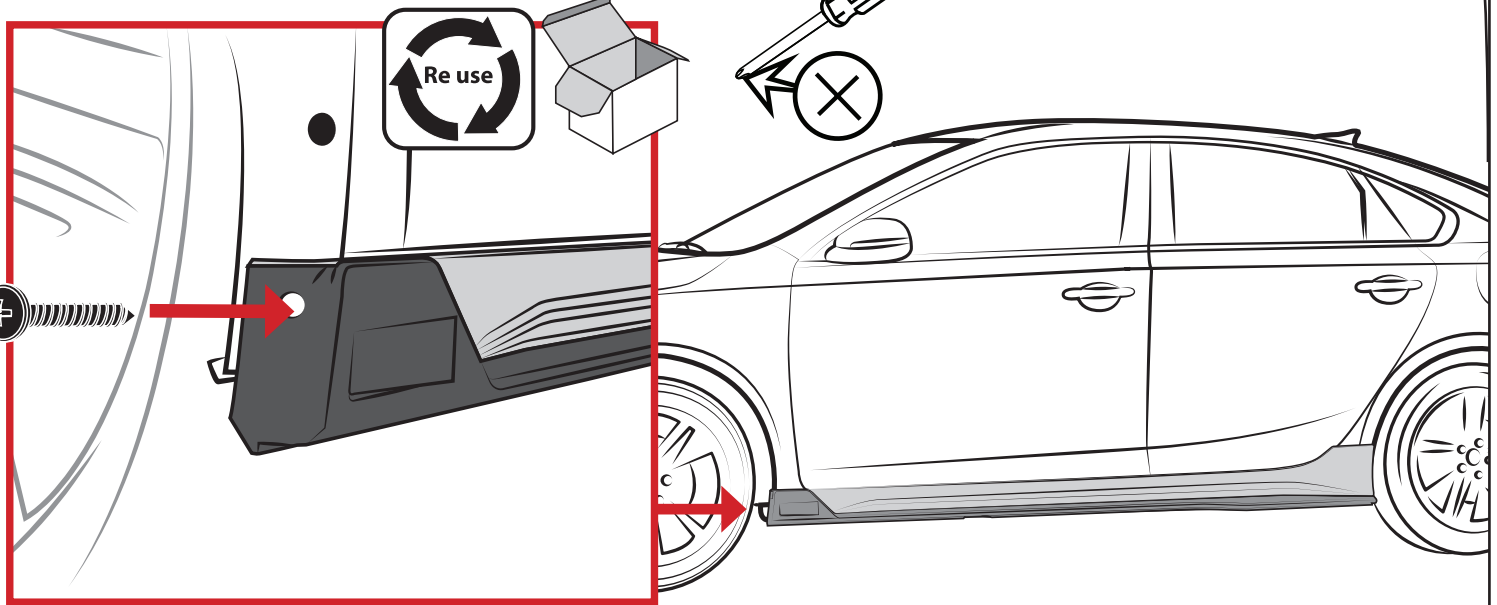


**3 PRE-INSTALL**





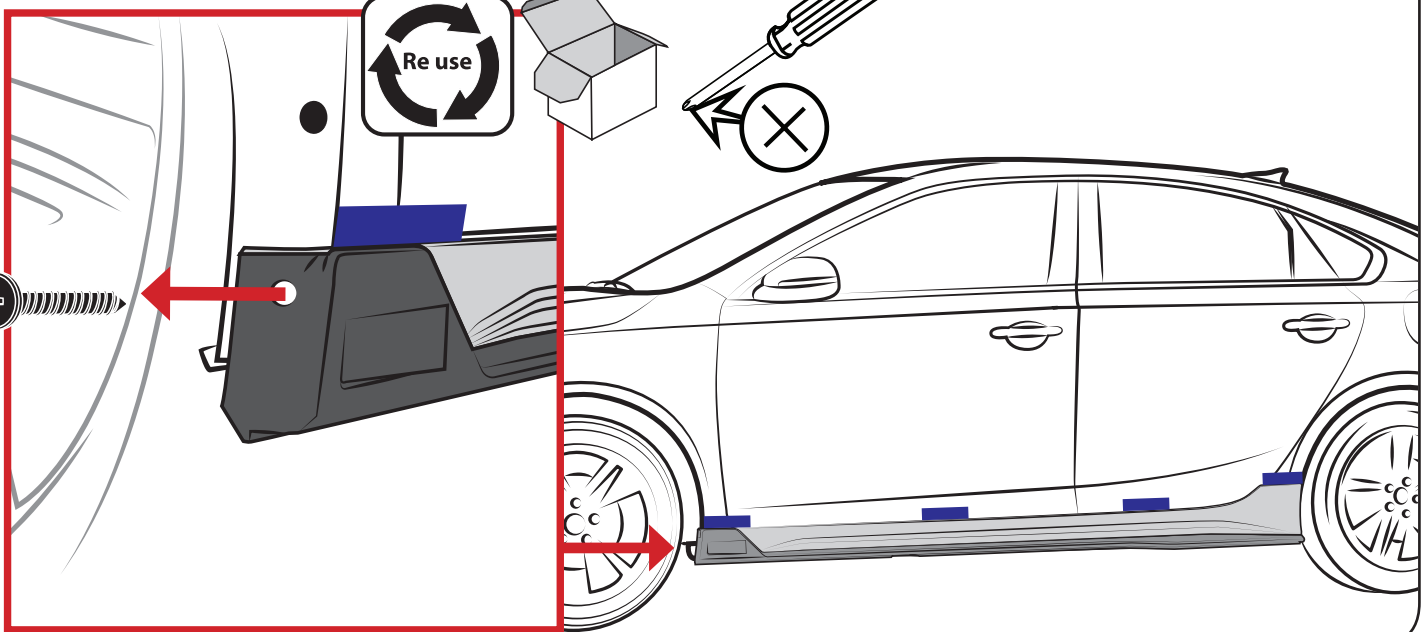
**4 PLACE ORIGINAL SCREW**



**5 MARK**

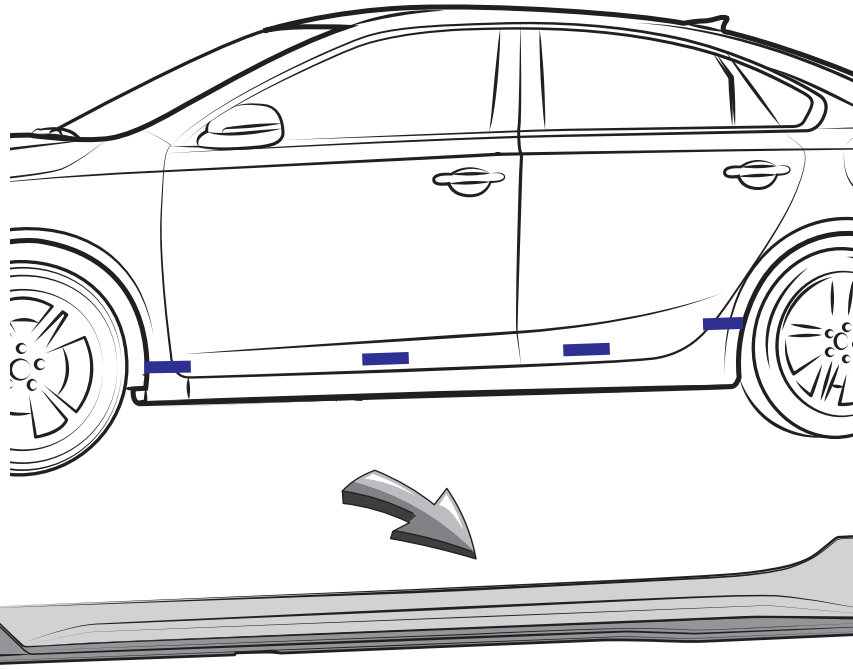


**6 REMOVE ORIGINAL SCREW**

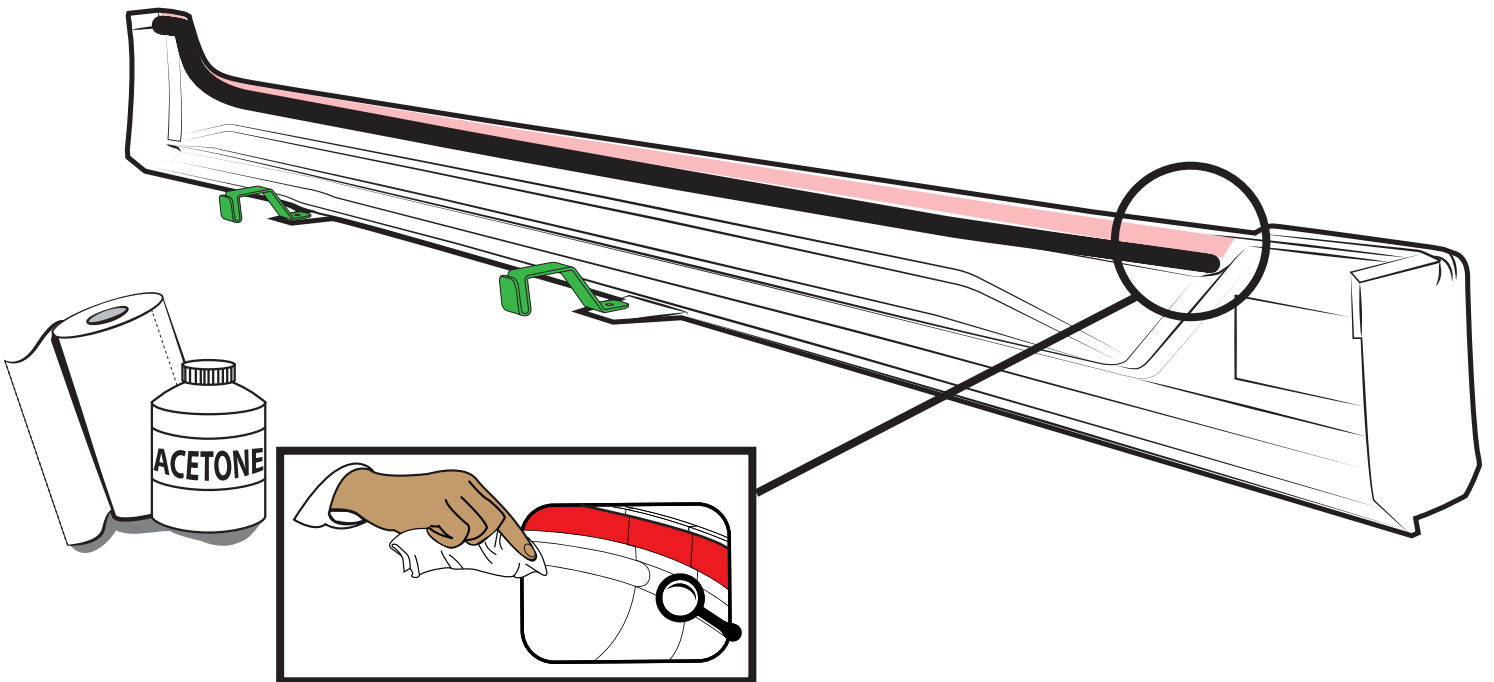




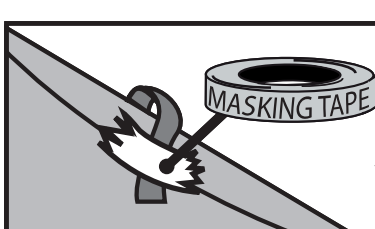
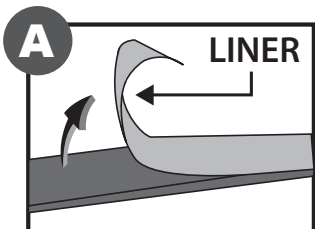
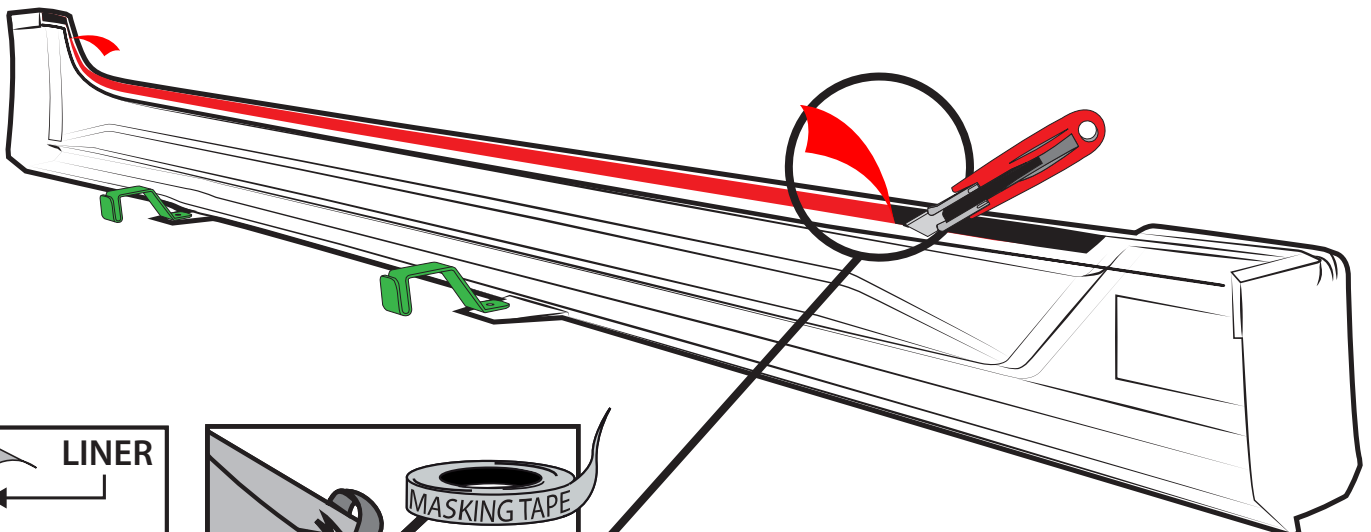
**7 REMOVE**



**8 CLEAN ADHESIVE CHANNEL**

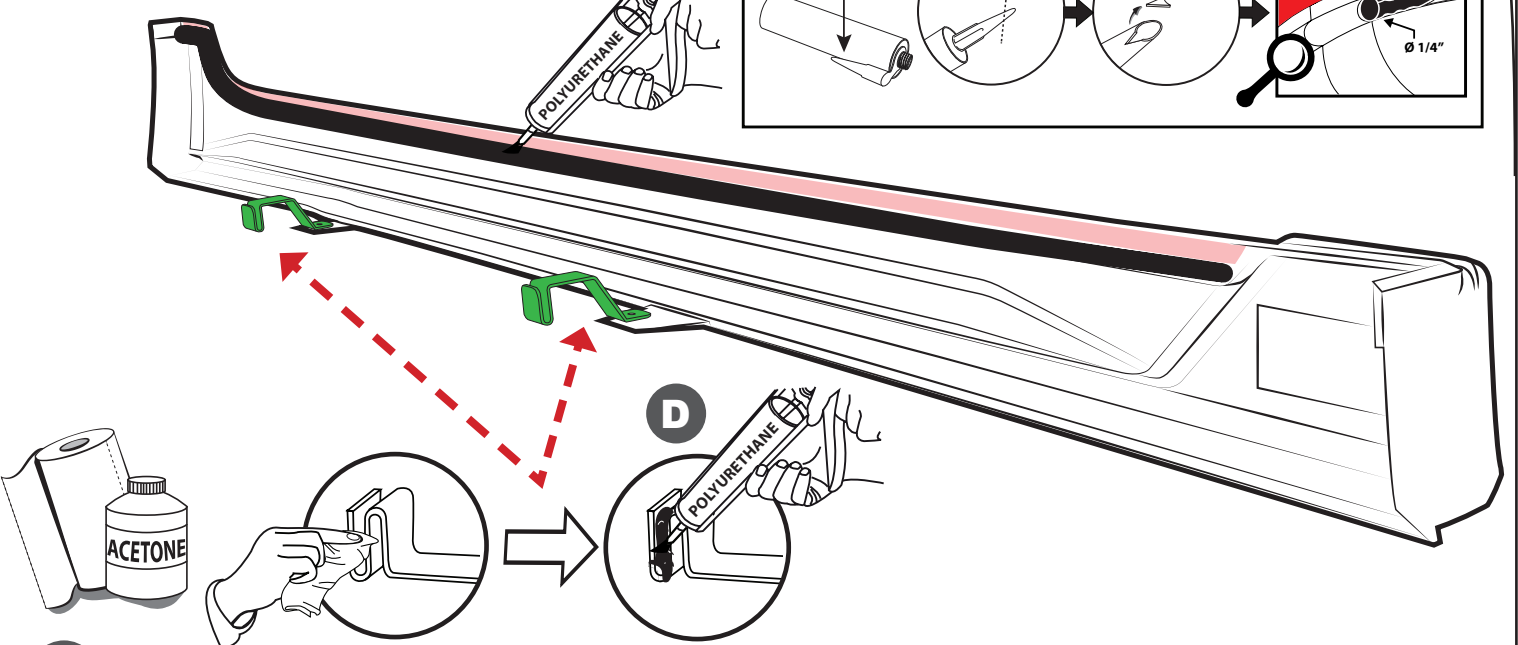
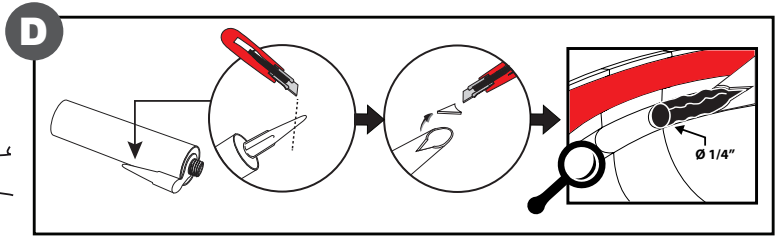


**9 PEEL**

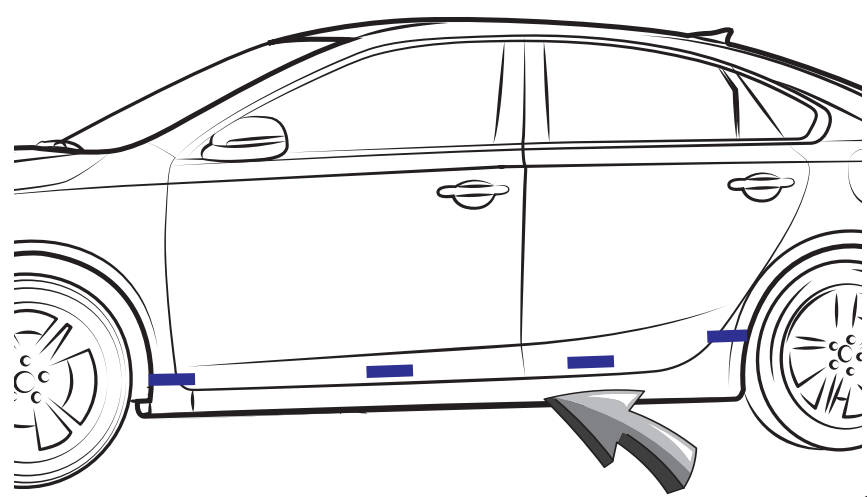




10 POLYURETHANE ADHESIVE

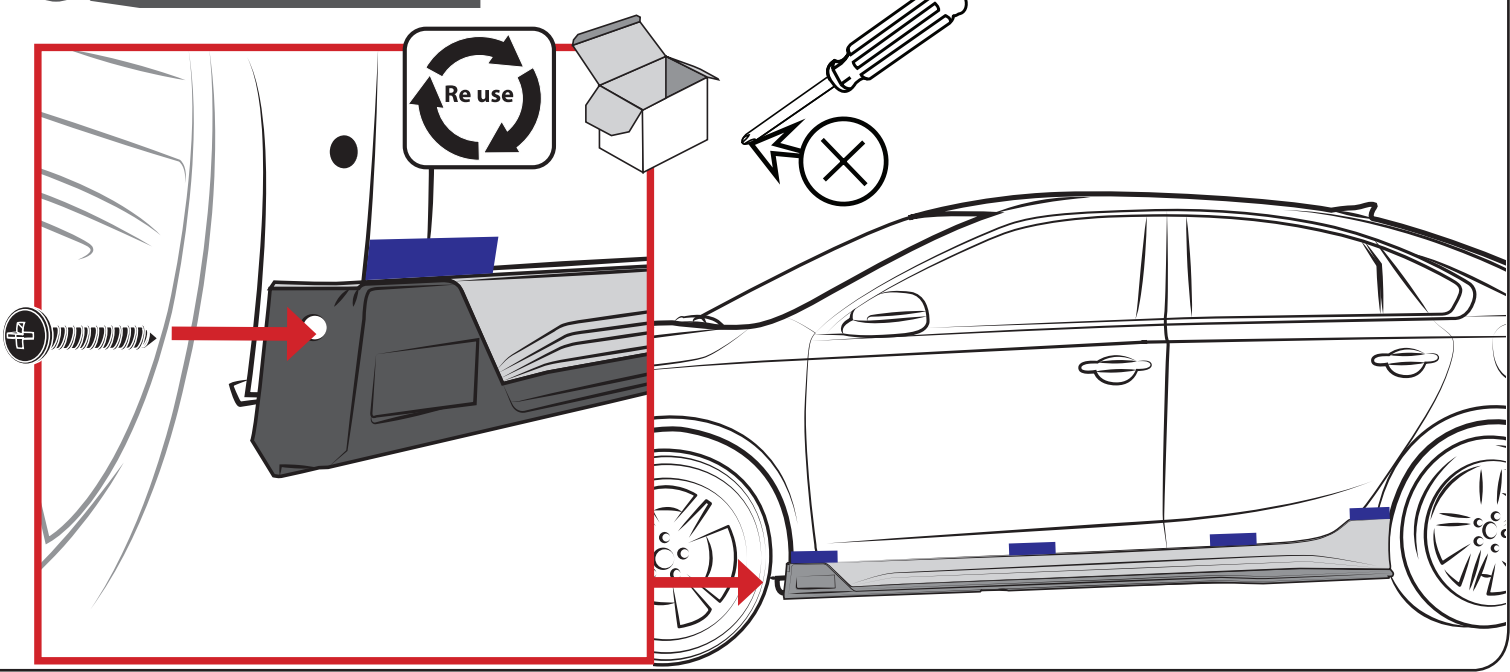


11 PLACE



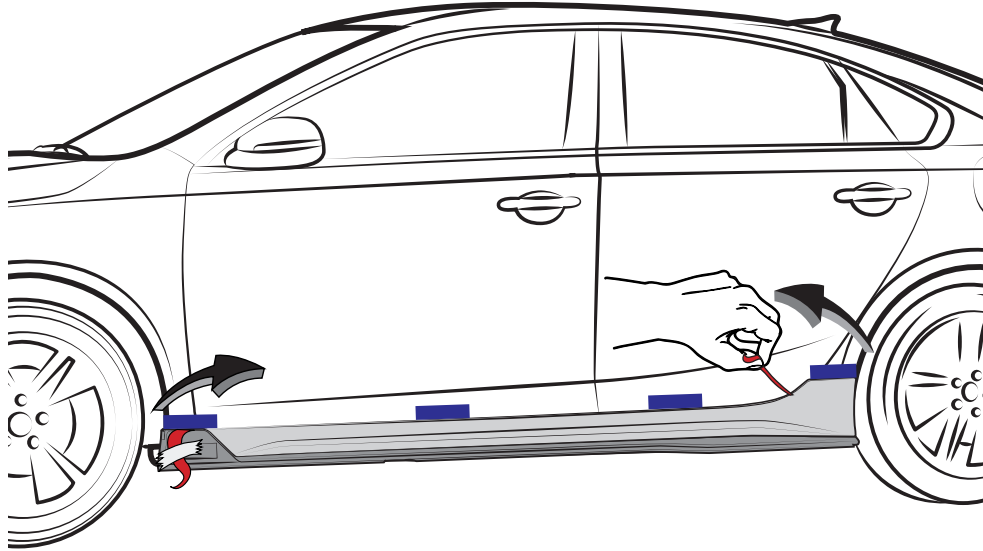
**!**  
MATCH WITH MASKING

12 PLACE ORIGINAL SCREW

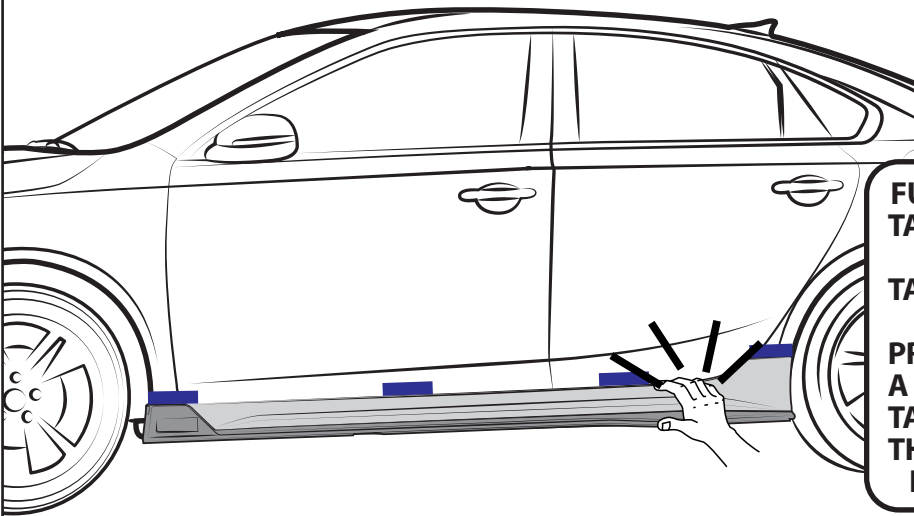




**13 REMOVE LINER**

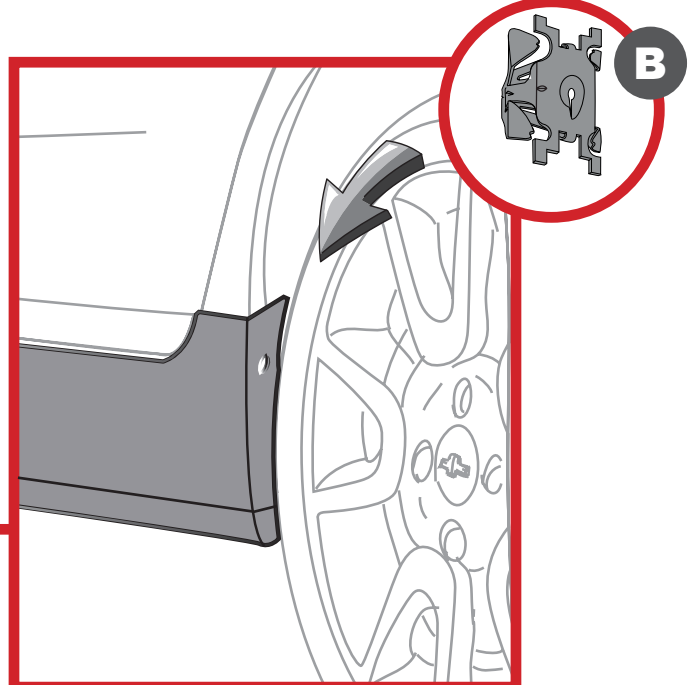
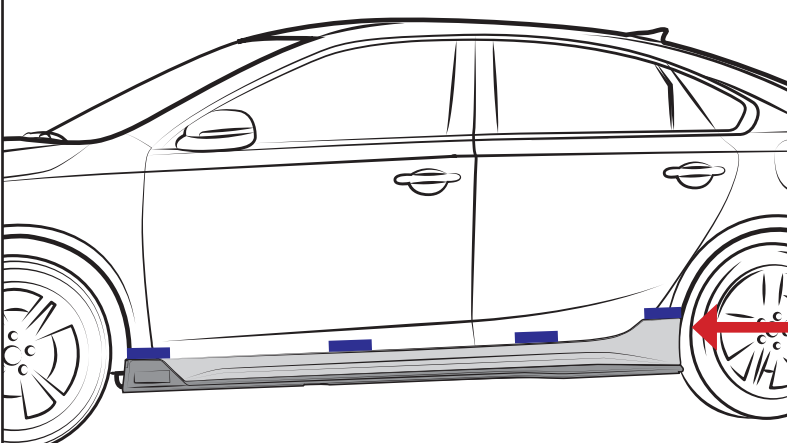


**14 PRESS**

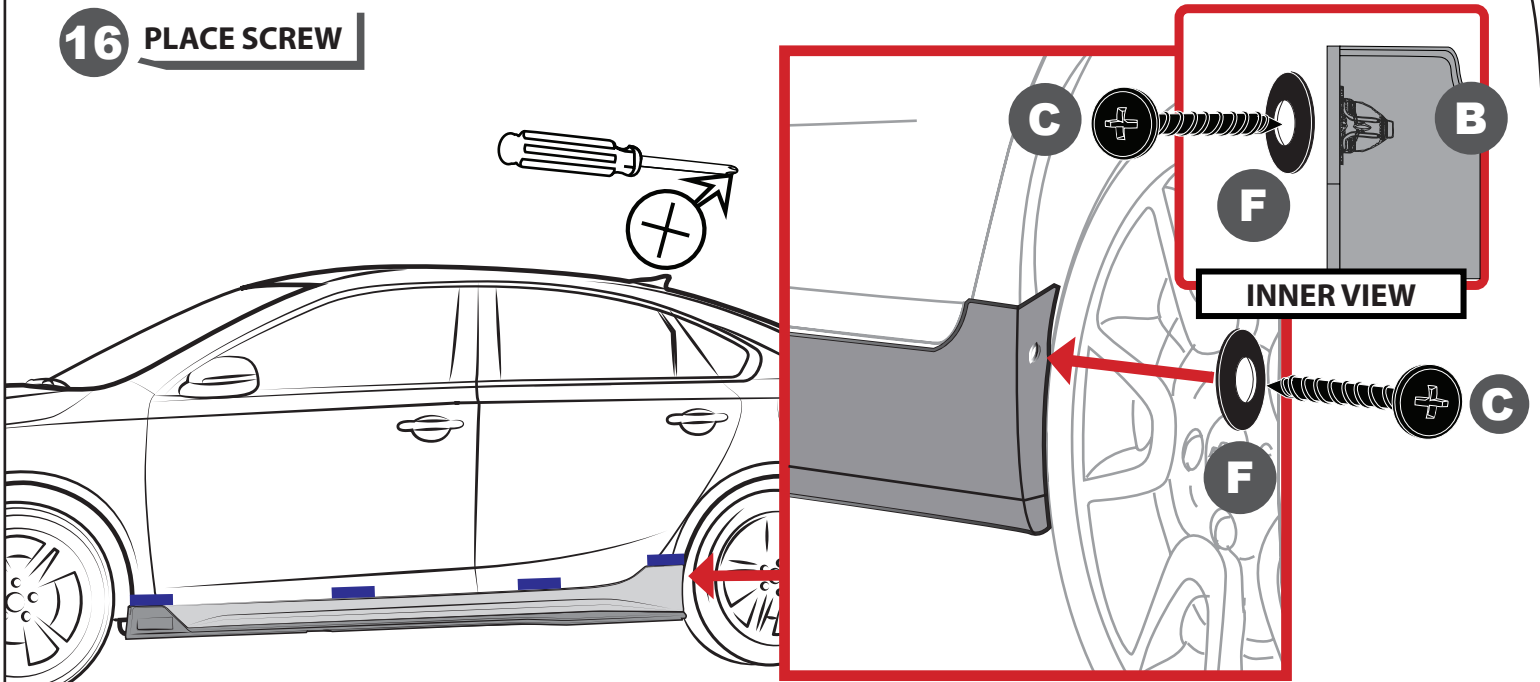


**FULL AND COMPLETE CONTACT BETWEEN TAPE AND VEHICLE SURFACE IS CRUCIAL FOR GOOD ADHESION PERFORMANCE! TAPE IS PRESSURE AND TEMPERATURE SENSITIVE! PROPER CONTACT IS ACHIEVED BY APPLYING A PRESSURE BETWEEN 40 AND 50 N/CM<sup>2</sup>. TAPE AND VEHICLE SURFACES SHOULD BE THE SAME TEMPERATURE AND MUST BE AT LEAST 60°F (25°F) DURING INSTALLATION!**

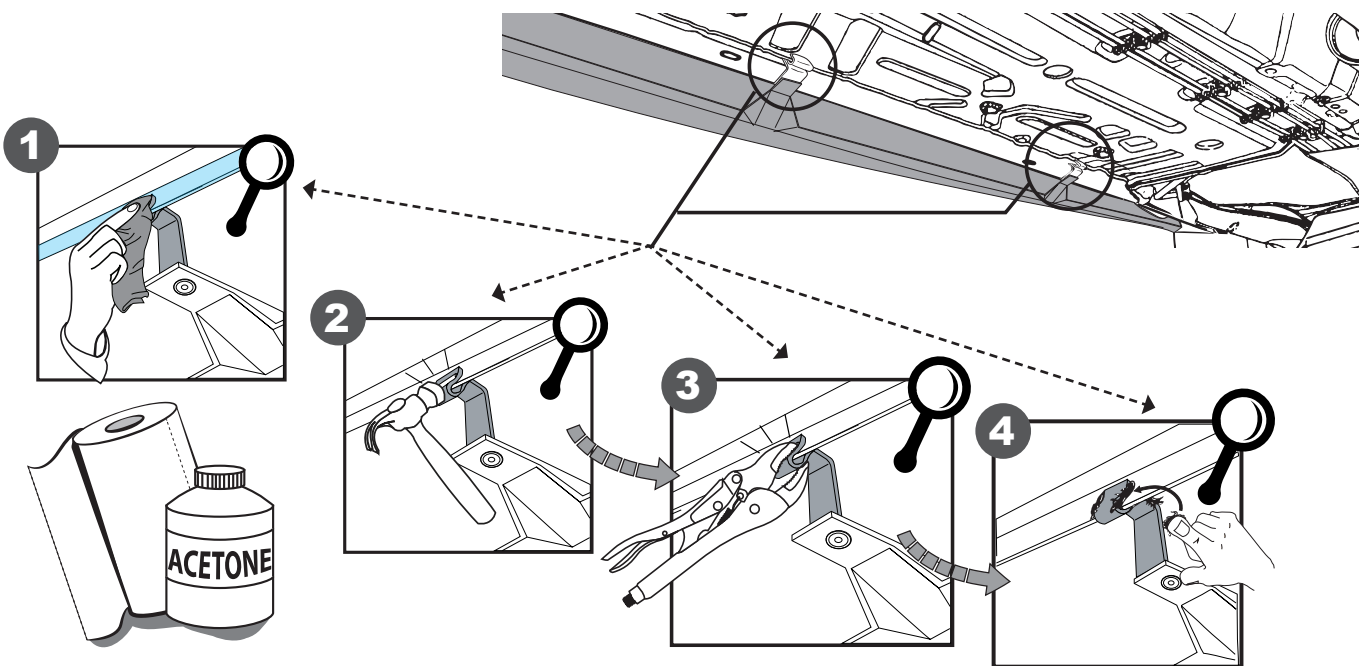
**15 PLACE AXIS CLIP**



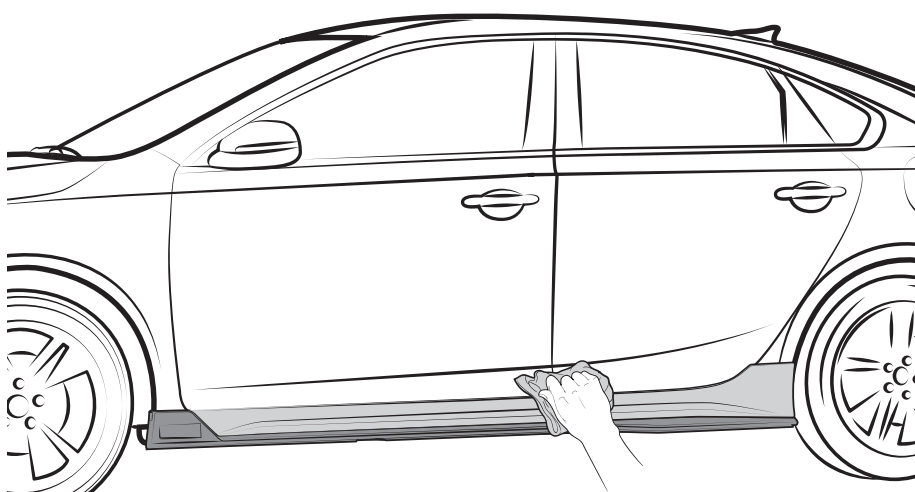
**16 PLACE SCREW**



**17 SECURE THE BRACKETS**



**18 CLEAN**

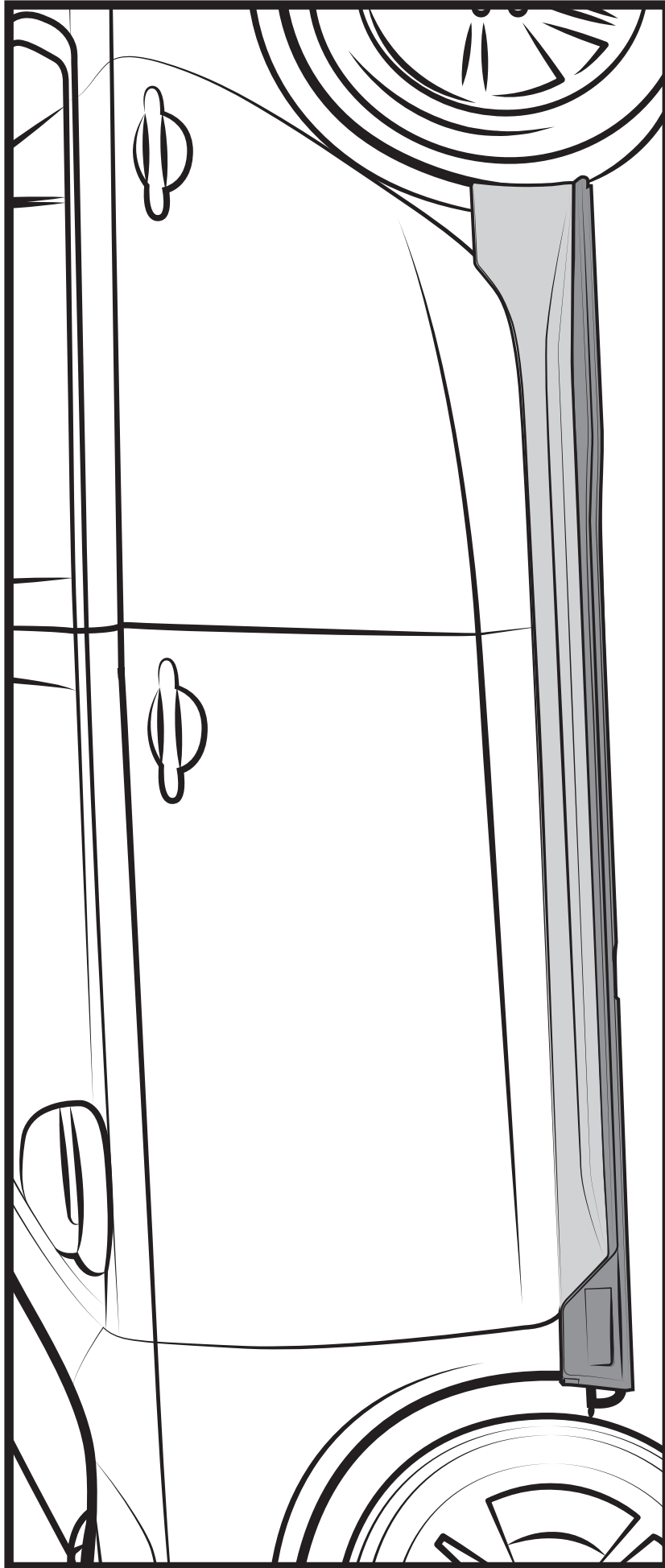


**REMOVE MASKING**





**!**  
**REPEAT ALL STEPS FOR RH SIDE**



**INSTALLED PART**


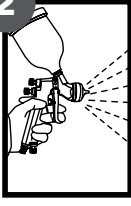


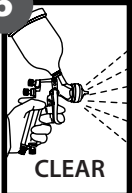

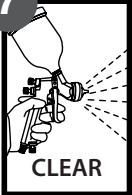

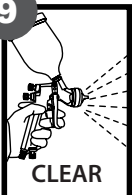
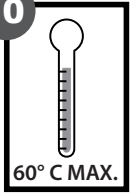


**INSTRUCTIONS PAINTING**

**IF THE PART IS IN FIRST, APPLY THE FOLLOWING PROCESS**

**! PLEASE READ CAREFULLY BEFORE STARTING WITH PAINTING PROCESS**

**BODYCOLOR PAINTING INSTRUCTIONS**

- |                                                                                                                  |                                                                                                                                                                                           |                                                                                                                         |                                                                                                           |
|------------------------------------------------------------------------------------------------------------------|-------------------------------------------------------------------------------------------------------------------------------------------------------------------------------------------|-------------------------------------------------------------------------------------------------------------------------|-----------------------------------------------------------------------------------------------------------|
| <p><b>1</b></p>                 | <p>SAND THE PART SOFTLY WITH A 400 GRAINS SAND PAPER OR WITH A SCOTCH-BRITE RED SPONGE. BE CAREFUL NOT TO DAMAGE FACTORY SATIN BLACK FINISH. CLEAN WITH ISOPROPYL ALCOHOL AFTERWARDS.</p> | <p><b>2</b></p>                       | <p>APPLY A GOOD QUALITY 2K PRIMER.</p>                                                                    |
| <p><b>3</b></p>               | <p>CHECK THE PARTS MINUTELY, THESE MUST HAVE A SMOOTH FINISH.</p>                                                                                                                         | <p><b>4</b></p>                     | <p>DUST ANY POWDER PARTICLE WITH A FLANNEL TOWEL BEFORE APPLYING THE PAINT.</p>                           |
| <p><b>5</b></p>  <p>CLEAR</p> | <p>APPLY BASE COAT TO GET A SMOOTH AND FINE FINISH.</p>                                                                                                                                   | <p><b>6</b></p>  <p>15 MIN</p>      | <p>WAIT 15 MINUTES, CHECK MINUTELY AND DETAIL WHERE NECESSARY.</p>                                        |
| <p><b>7</b></p>  <p>CLEAR</p> | <p>APPLY A THIN LAYER OF VARNISH.</p>                                                                                                                                                     | <p><b>8</b></p>  <p>5 MIN</p>       | <p>WAIT 5 MORE MINUTES.</p>                                                                               |
| <p><b>9</b></p>  <p>CLEAR</p> | <p>VARNISH PLENTY UNTIL YOU GET THE DESIRED BRIGHT AND FINISH. WAIT 5 MORE MINUTES.</p>                                                                                                   | <p><b>10</b></p>  <p>60° C MAX.</p> | <p>CURE AT A MAXIMUM TEMPERATURE OF 60°C (140°F) FOR 15 MINUTES. DO NOT EXCEED SUGGESTED TEMPERATURE.</p> |

**! IMPORTANT !**  
**MAKE SURE THE PART IS SECURED CORRECTLY TO THE BASE DURING PAINT AND CURE PROCESS TO AVOID ANY RISK OF FALLING.**