

INSTALLATION MANUAL

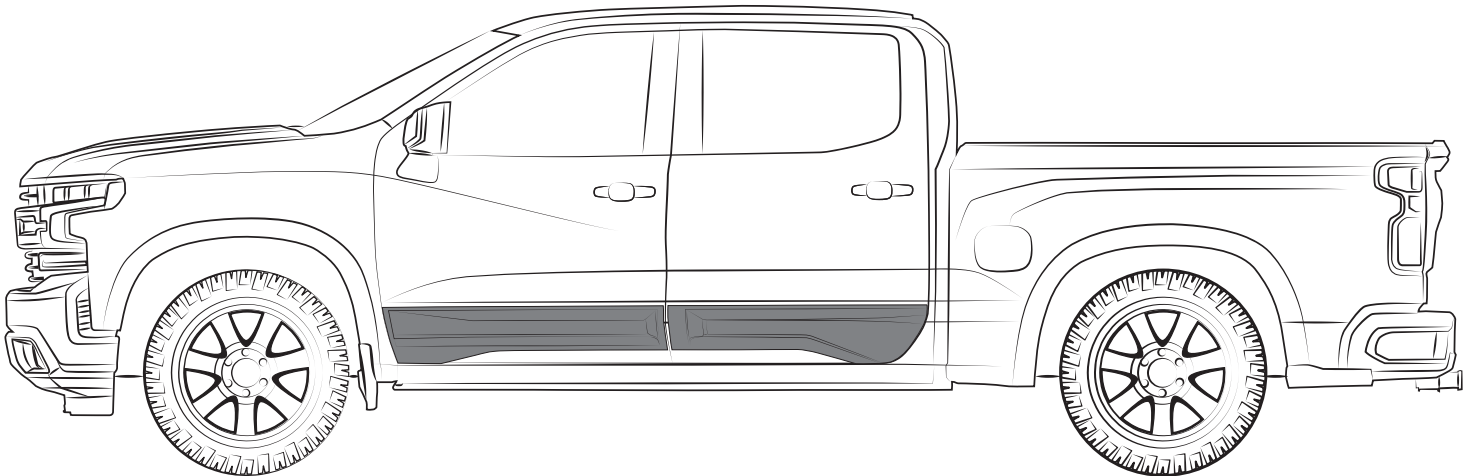


**READ CAREFULLY
BEFORE INSTALLATION**



**WASH & CLEAN
PROPERLY BEFORE
INSTALLING**

**DOOR ROCKERS PANELS SET CREW CAB
AD PART #: GM39D10**



**WE RECOMMEND
2 PERSON
INSTALLATION**

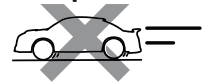
AFTER INSTALLING

**DO NOT
WASH CAR**

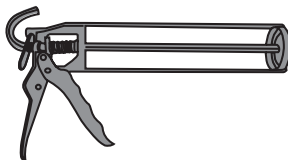


24 hrs

**DRIVE SLOWLY
25 mph max**





TOOLS



CHECK LIST

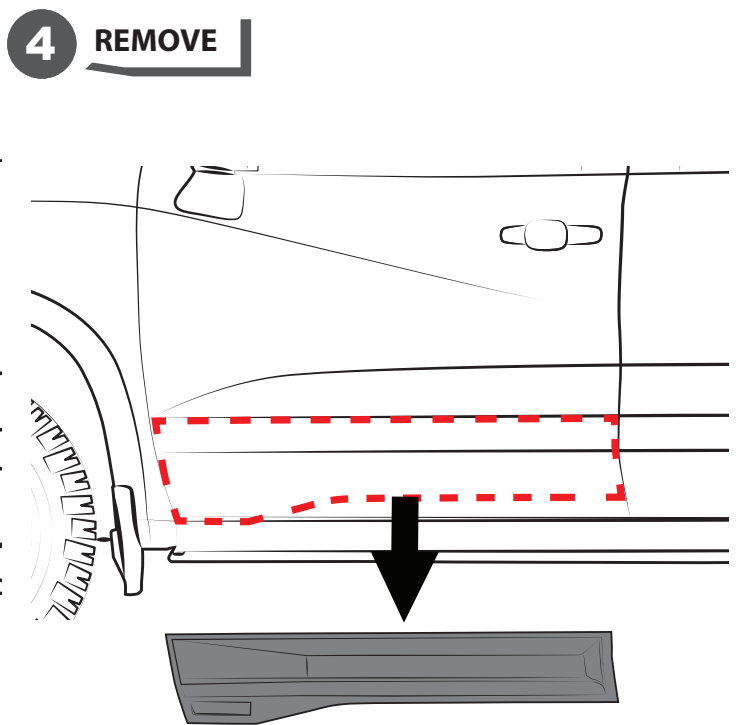
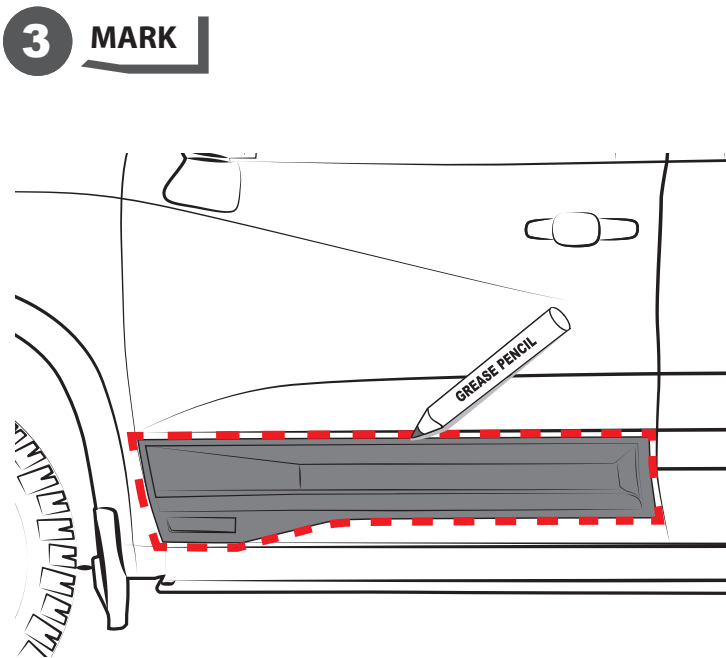
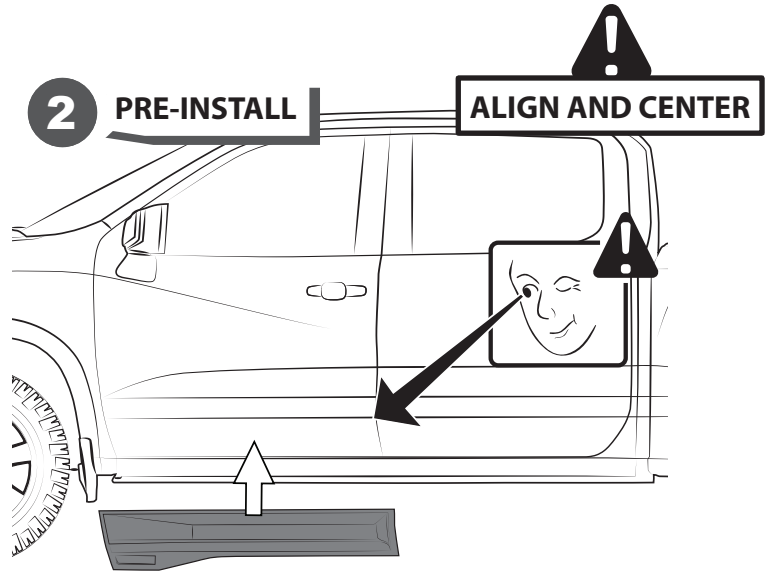
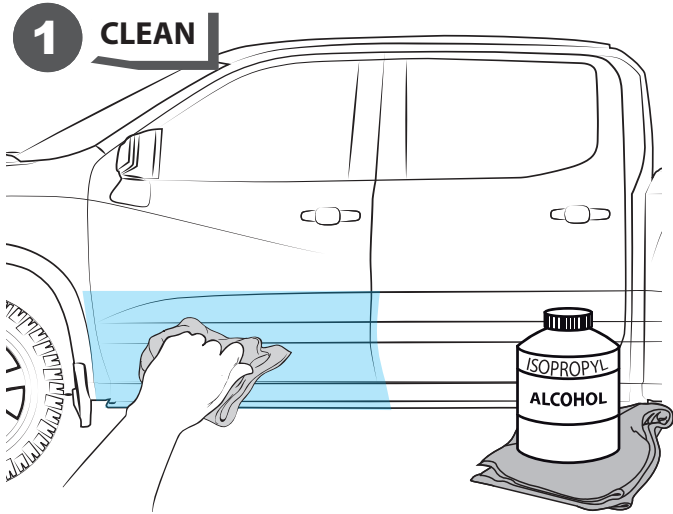
*Already installed in the part

ITEM	DESCRIPTION	DRAWING	AMOUNT
A	*VHB TAPE		N/A
B	POLYURETHANE ADHESIVE 310 ml		1 PC

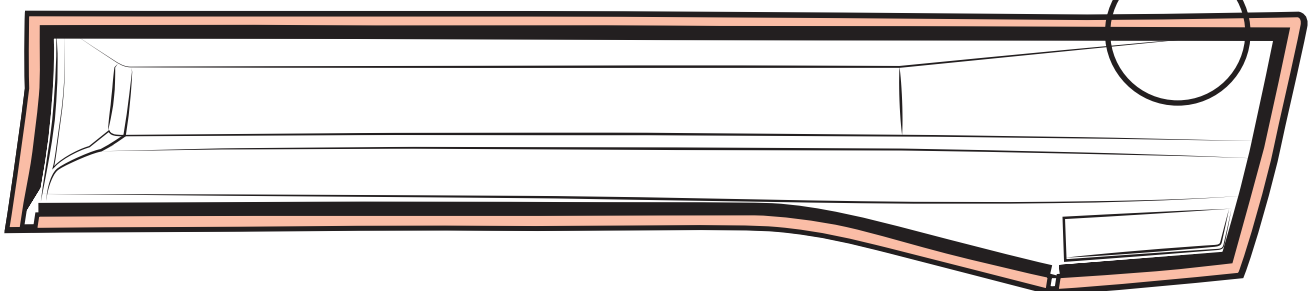
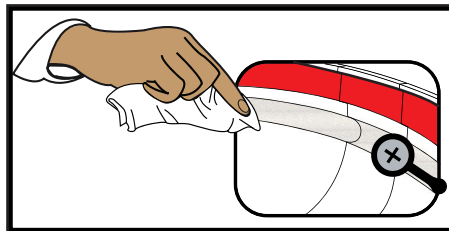
INSTALLATION MANUAL

The ideal temperature range of the part and the vehicle when installing must be 16°C (60°F) to 40°C (104°F), this guarantees a correct assembly.

FRONT ROCKER PANEL

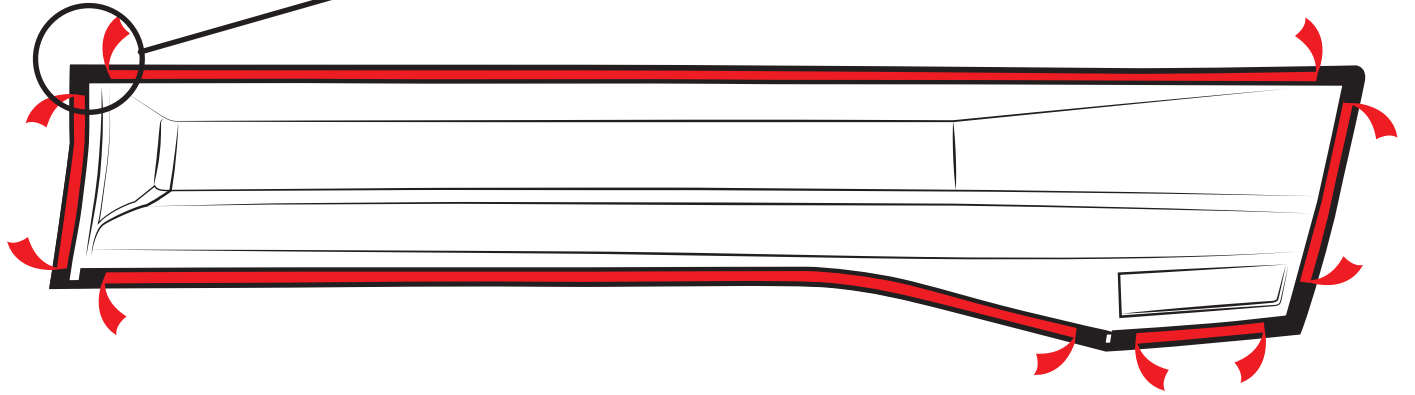
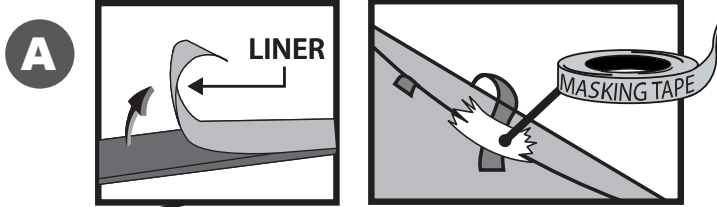


5 CLEAN INNER CHANNEL

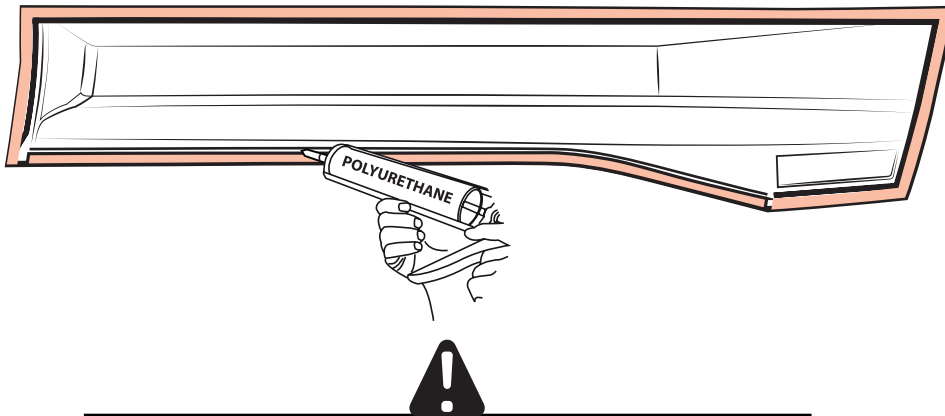


INSTALLATION MANUAL

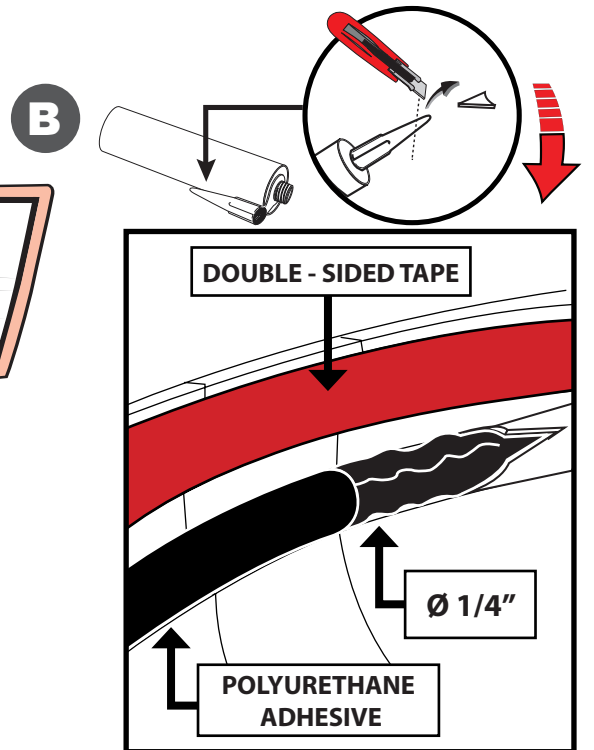
6 PEEL



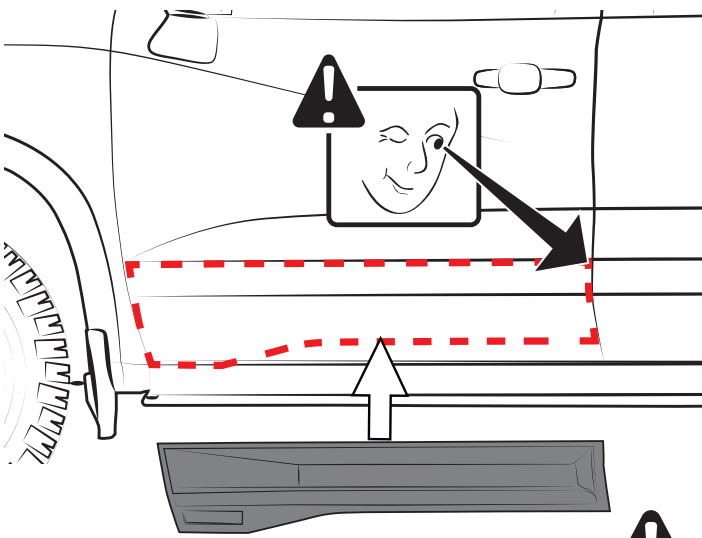
7 APPLY POLYURETHANE ADHESIVE



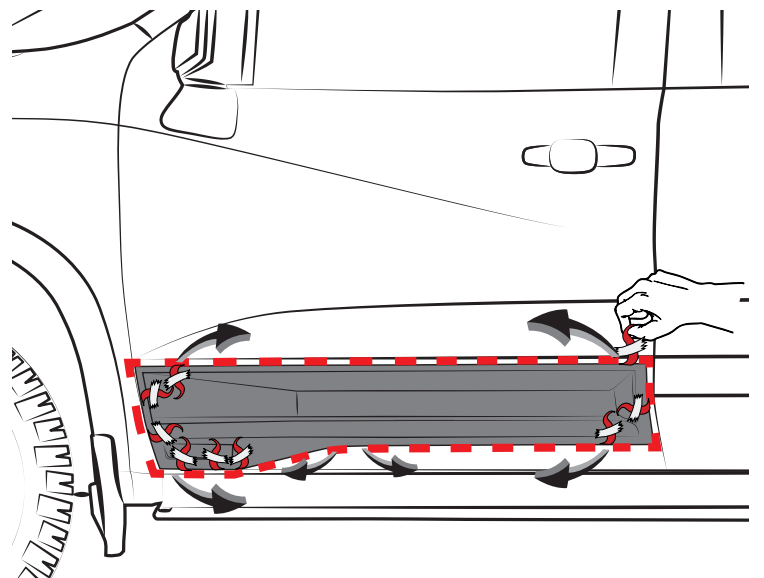
POLYURETHANE ADHESIVE MUST NEVER TOUCH THE DOUBLE SIDED TAPE



8 PLACE



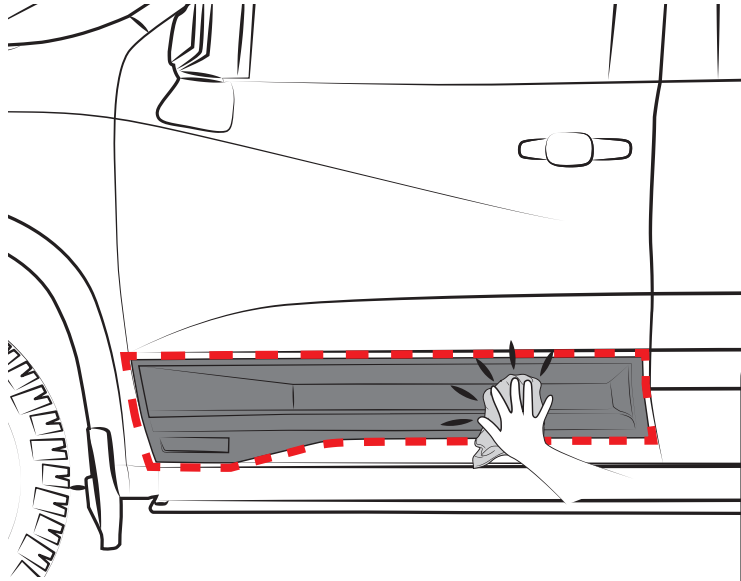
9 REMOVE LINER



WARM SURFACES WITH HEAT GUN IF SURFACE TEMPERATURE IS TOO COLD.

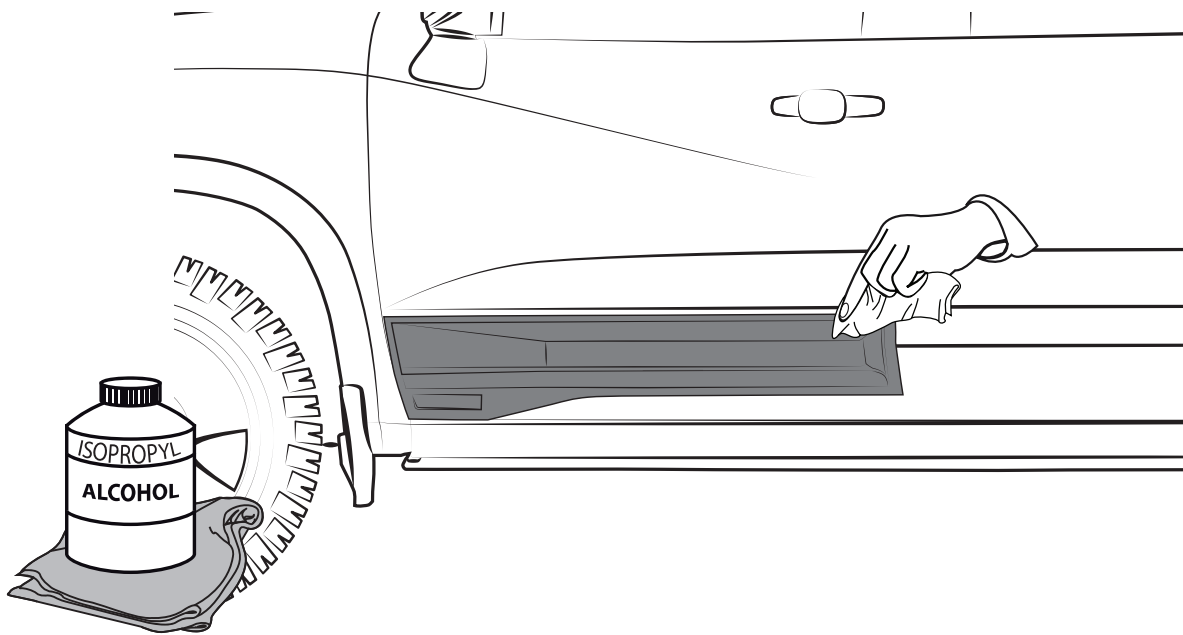
INSTALLATION MANUAL

10 PRESS FIRMLY

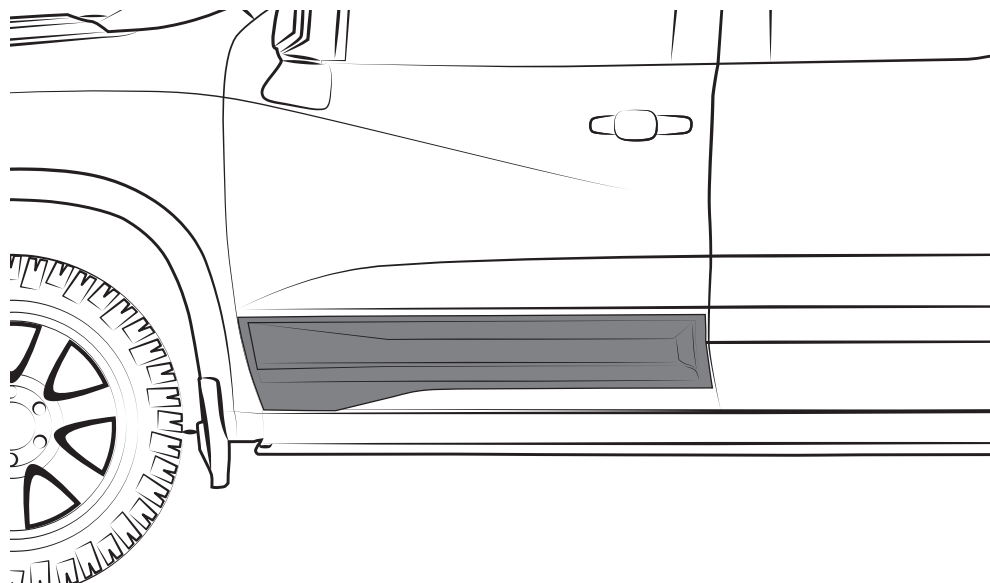


! DURING APPLICATION, THE VEHICLE, ADD ON PARTS AND TAPE MUST BE AT OR ABOVE 16 °C OR 60 °F. A FULL SURFACE CONTACT BETWEEN TAPE AND SUBSTRATE IS IMPORTANT FOR GOOD ADHESION PERFORMANCE. CONTACT IS ACHIEVED BY APPLYING PRESSURE. IN PRACTICE A PRESSURE BETWEEN 40 AND 5 N/CM² IS USUALLY NEEDED.

11 CLEAN OFF GREASE PENCIL MARK

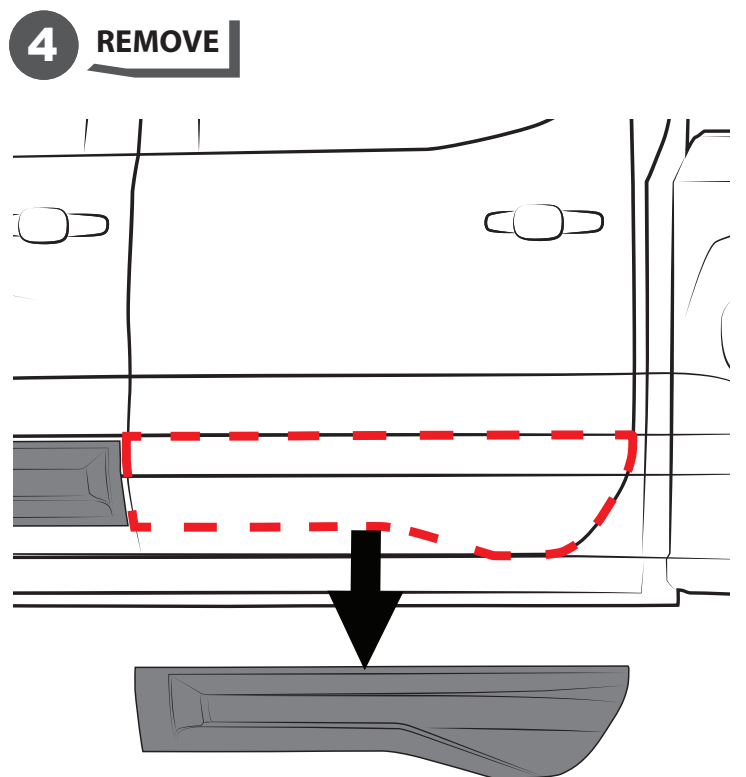
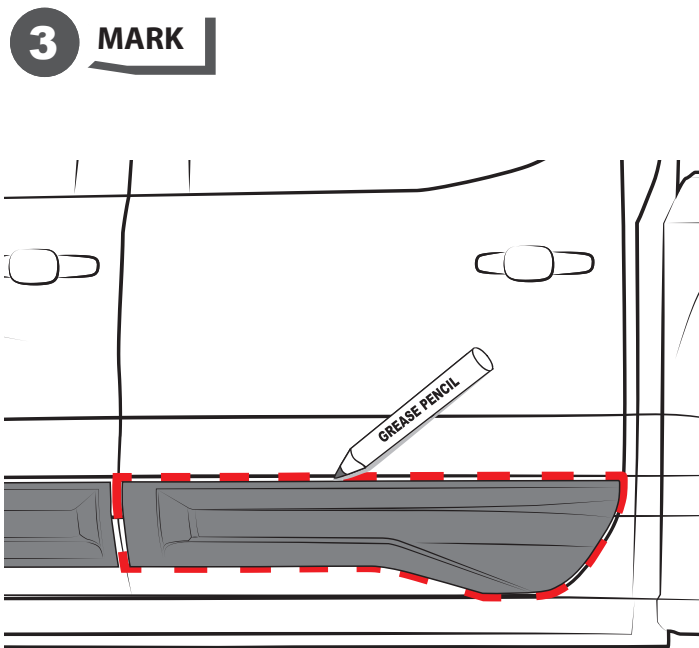
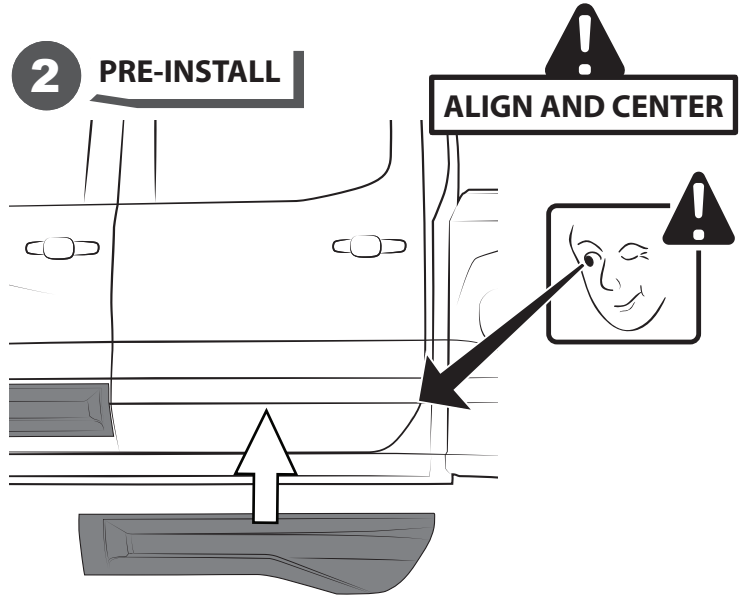
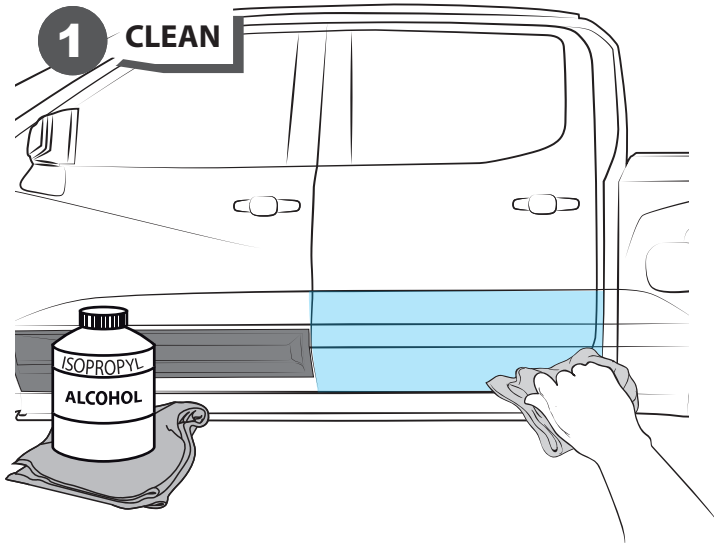


INSTALLED PART

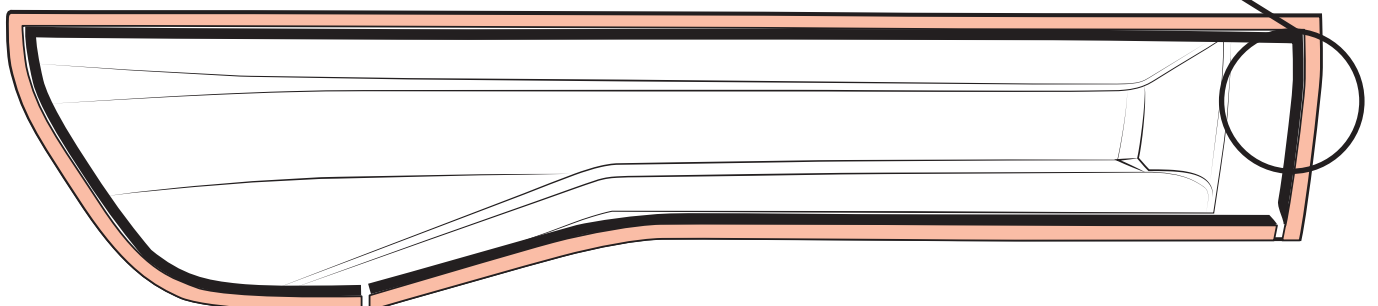
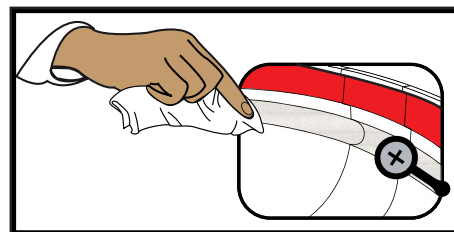


INSTALLATION MANUAL

REAR ROCKER PANEL



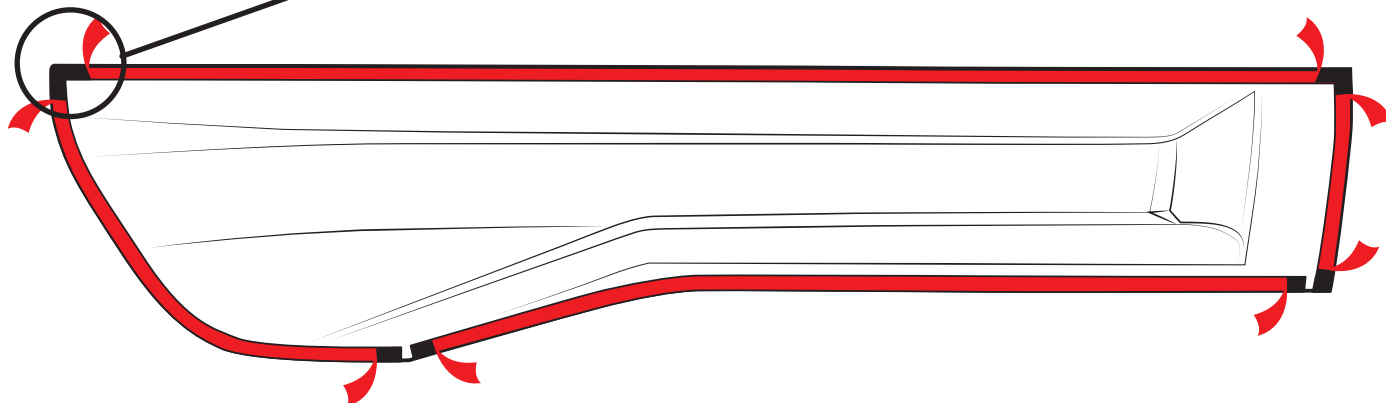
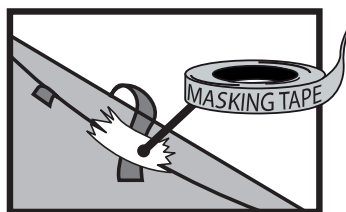
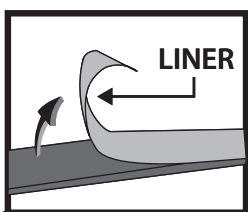
5 CLEAN INNER CHANNEL



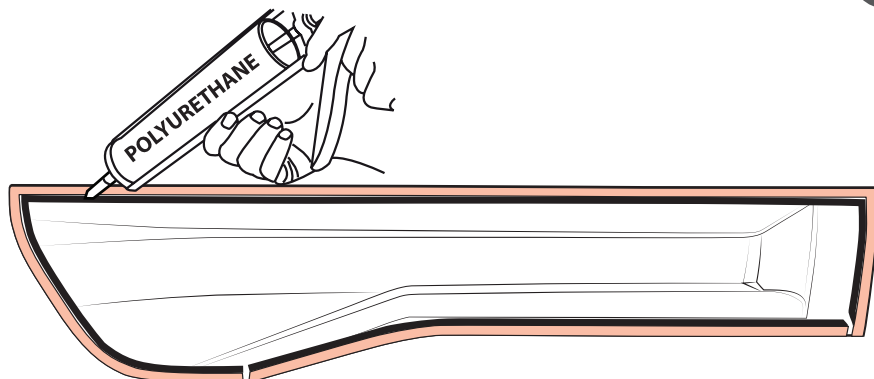
INSTALLATION MANUAL

6 PEEL

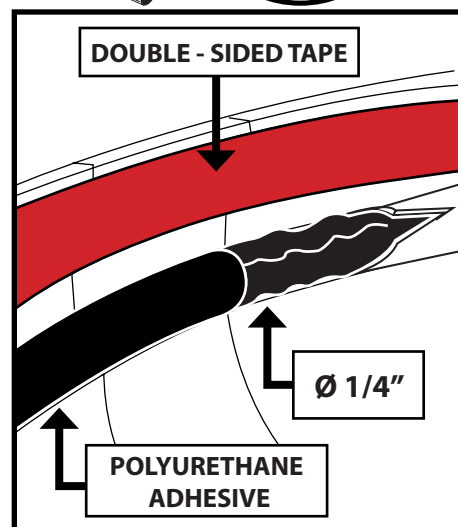
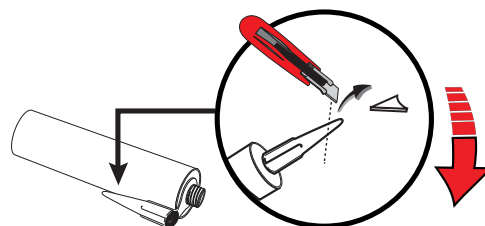
A



7 APPLY POLYURETHANE ADHESIVE

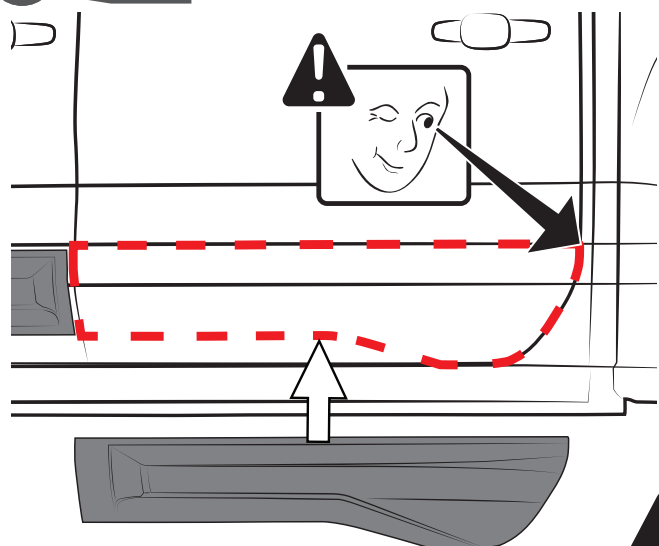


B

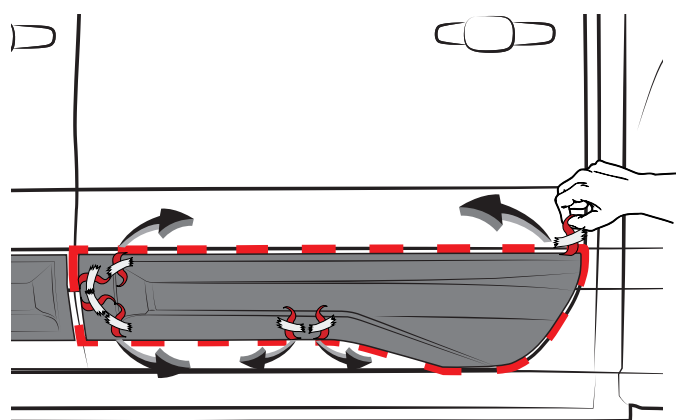


POLYURETHANE ADHESIVE MUST NEVER TOUCH THE DOUBLE SIDED TAPE

8 PLACE



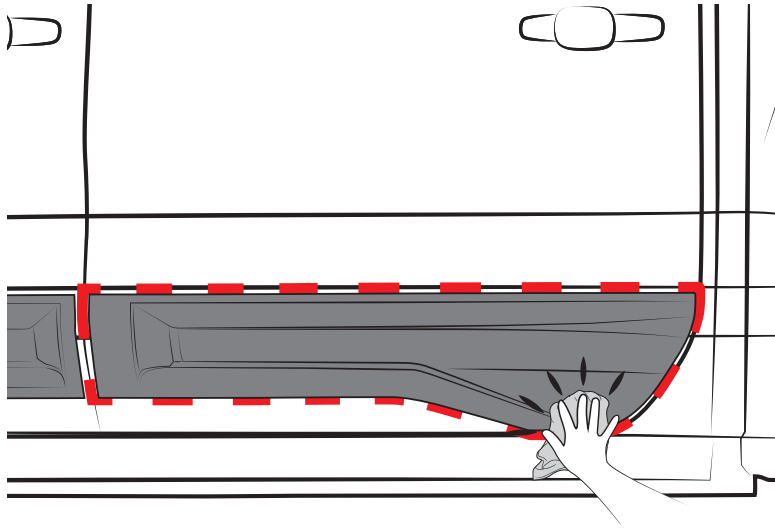
9 REMOVE LINER



WARM SURFACES WITH HEAT GUN IF SURFACE TEMPERATURE IS TOO COLD.

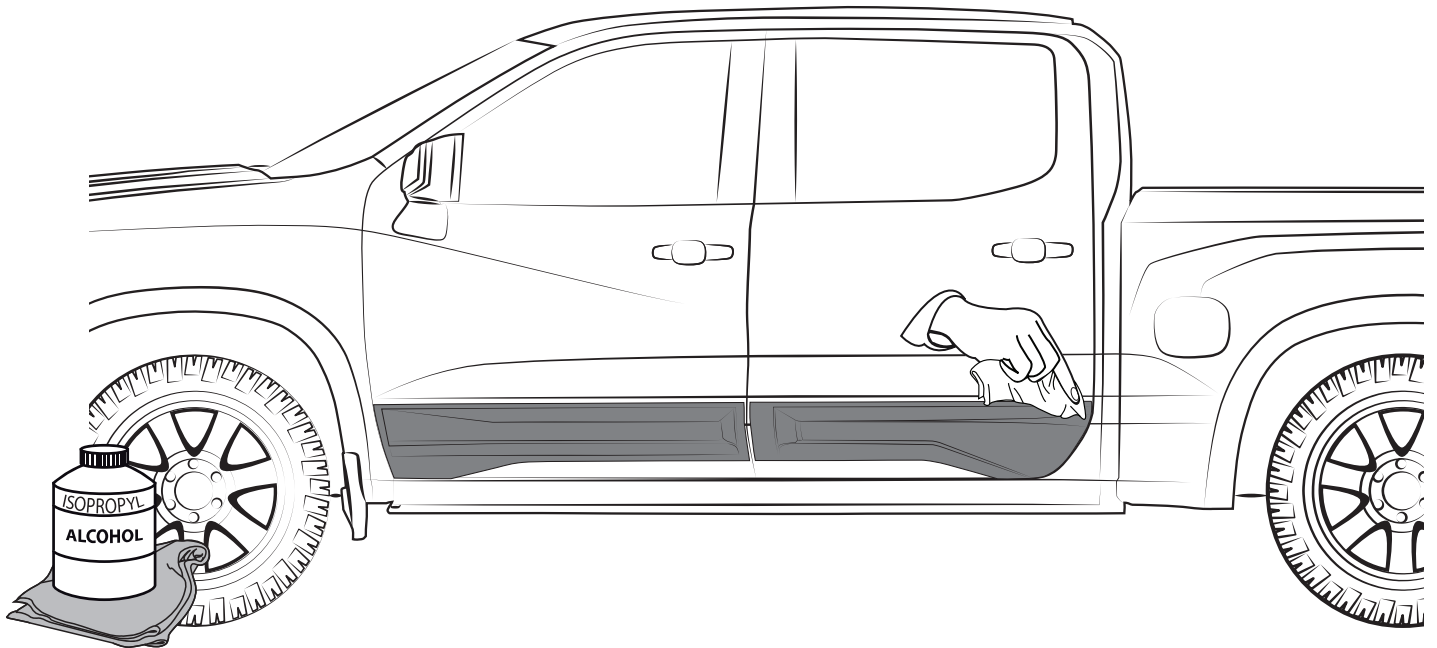
INSTALLATION MANUAL

10 PRESS FIRMLY

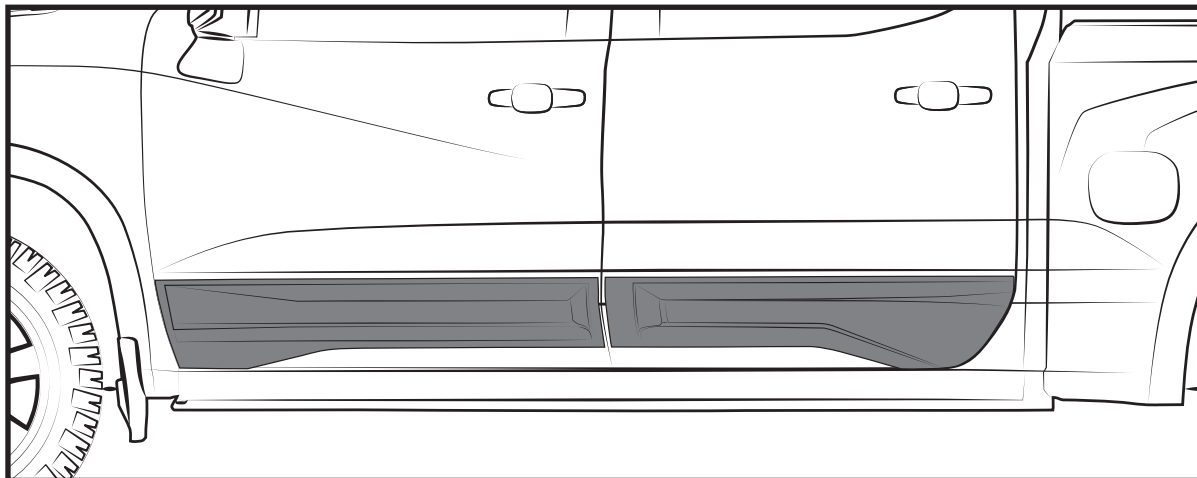


! DURING APPLICATION, THE VEHICLE, ADD ON PARTS AND TAPE MUST BE AT OR ABOVE 16 °C OR 60 °F. A FULL SURFACE CONTACT BETWEEN TAPE AND SUBSTRATE IS IMPORTANT FOR GOOD ADHESION PERFORMANCE. CONTACT IS ACHIEVED BY APPLYING PRESSURE. IN PRACTICE A PRESSURE BETWEEN 40 AND 50 N/CM² IS USUALLY NEEDED.

11 CLEAN OFF GREASE PENCIL MARK



INSTALLED PART



! REPEAT ALL STEPS FOR RH SIDE