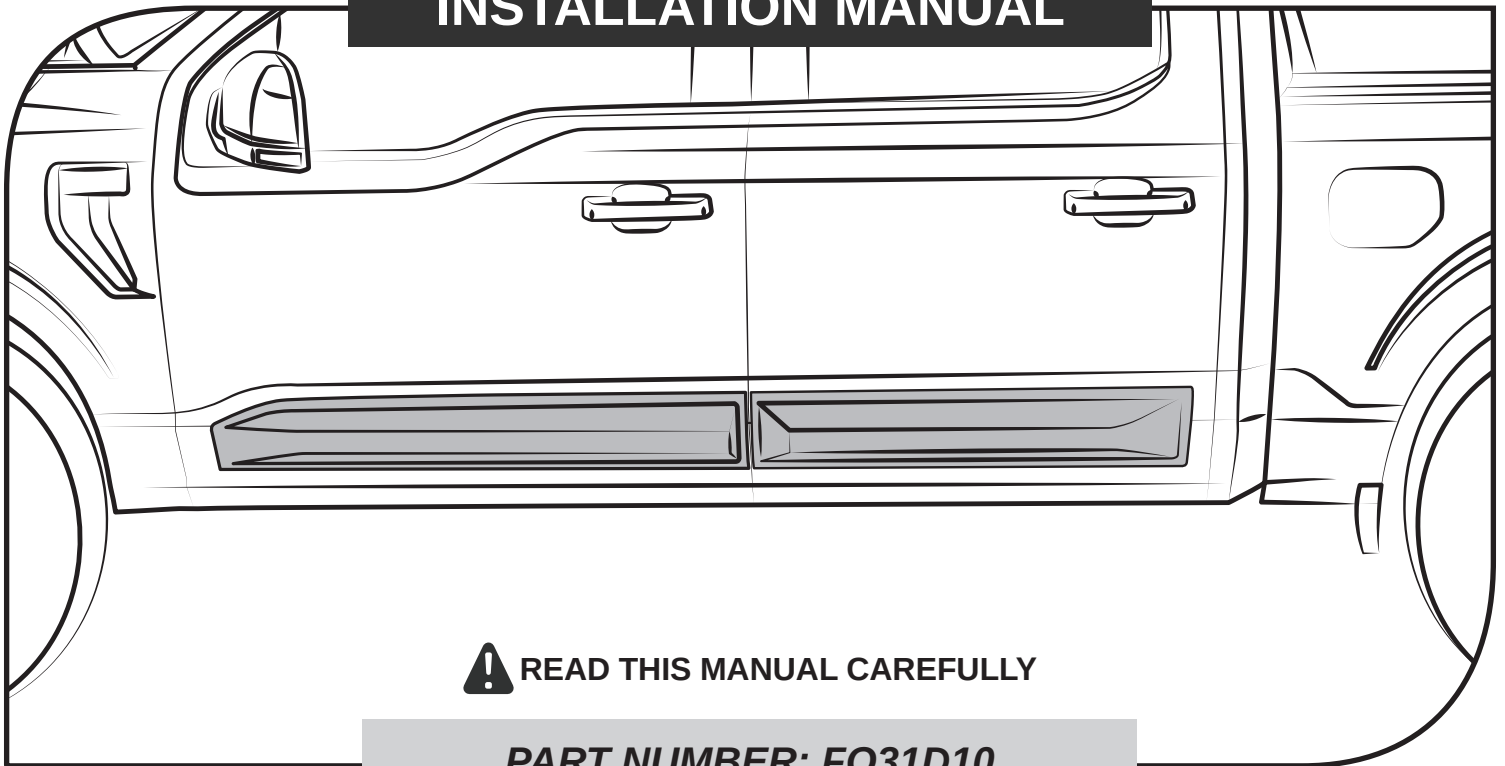


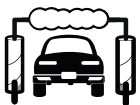
INSTALLATION MANUAL



! READ THIS MANUAL CAREFULLY

PART NUMBER: FO31D10

BEFORE INSTALLING



**WASH & CLEAN
PROPERLY**



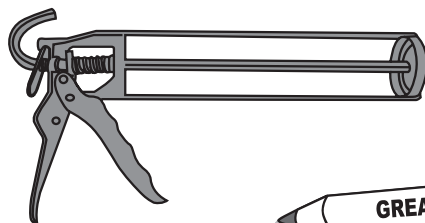
**WE RECOMMEND
2 PERSONS FOR
INSTALLATION**

AFTER INSTALLING



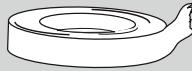

**DO NOT WASH
IN 48 HRS**

TOOLS



CHECK LIST

***ALREADY INSTALLED ON THE PART**

ITEM	DESCRIPTION	DRAWING	AMOUNT
A	*VHB TAPE		N/A
B	POLYURETHANE ADHESIVE 310 ml		1 PC

CREW CAB DOOR ROCKER PANEL SET

PART NUMBER: FO31D10



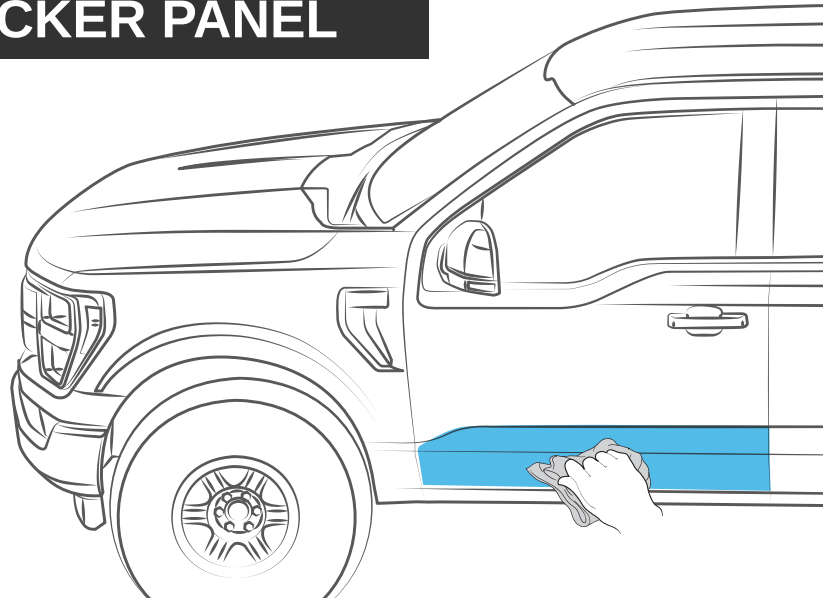
THE IDEAL TEMPERATURE RANGE OF THE PART AND THE VEHICLE WHEN INSTALLING MUST BE 16°C (60°F) TO 40°C (104°F), THIS GUARANTEES A CORRECT ASSEMBLY.

FRONT ROCKER PANEL

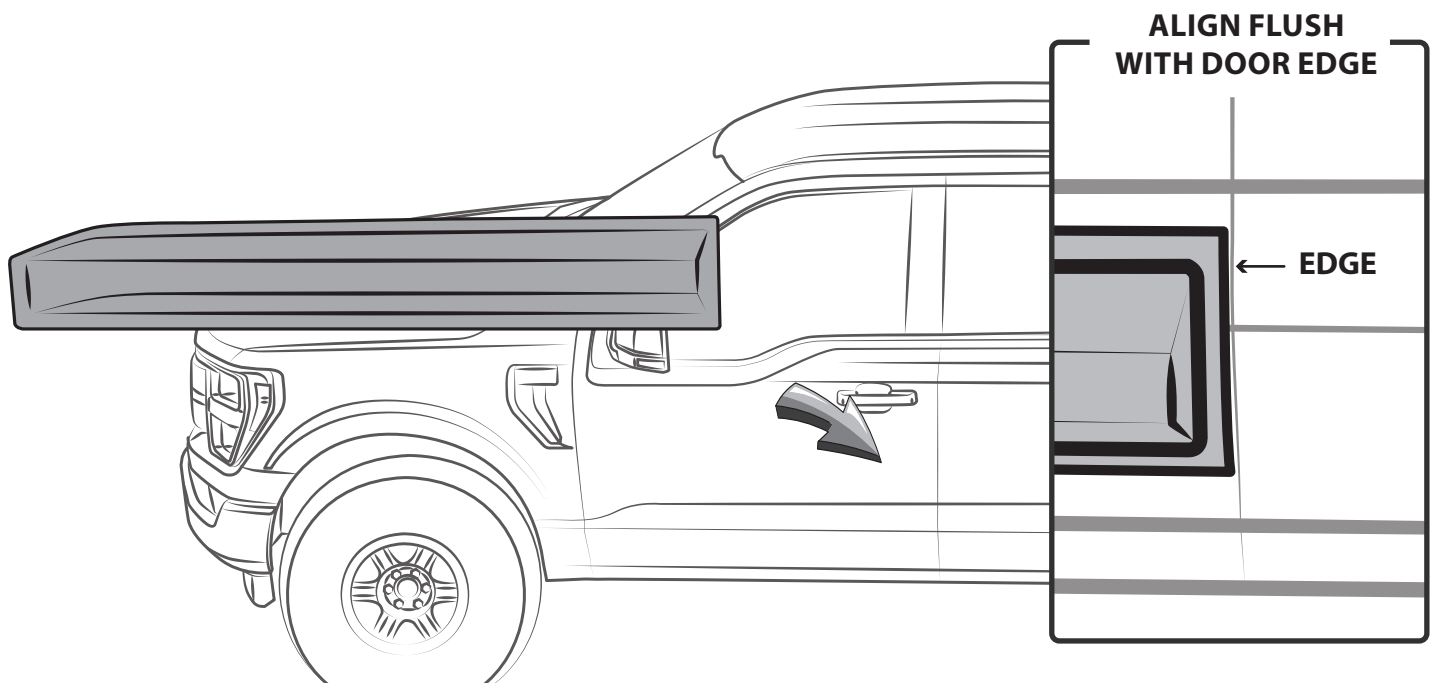
1 CLEAN



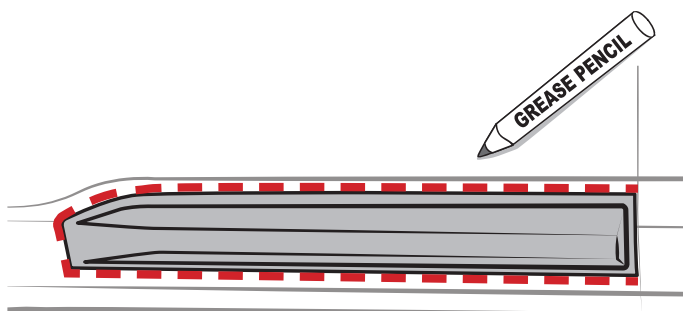
REMOVE ANY RINSE AID OR GLOSS ENHANCERS RESIDUE



2 TEST FIT THE PART



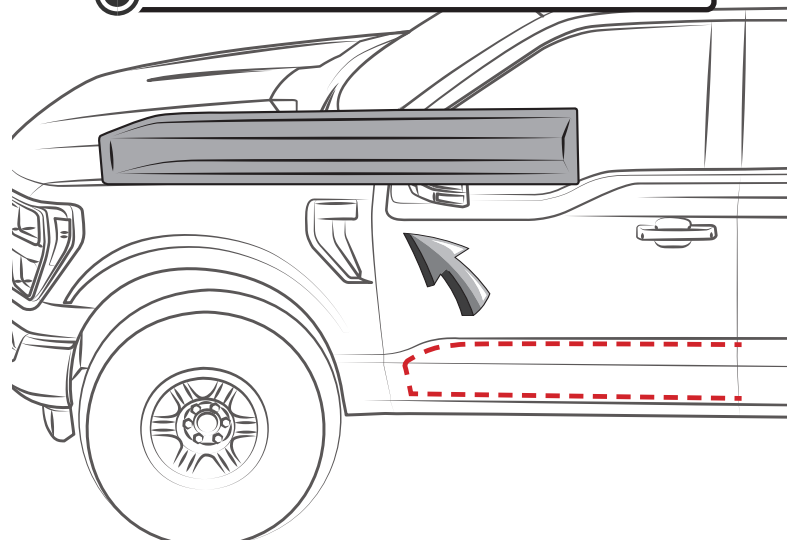
3 MARK THE OUTLINE



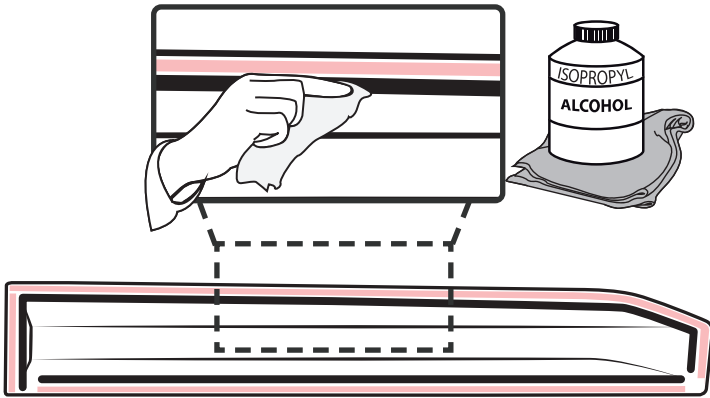
4 REMOVE



WARM SURFACES WITH HEAT GUN IF SURFACE TEMPERATURE IS TOO COLD

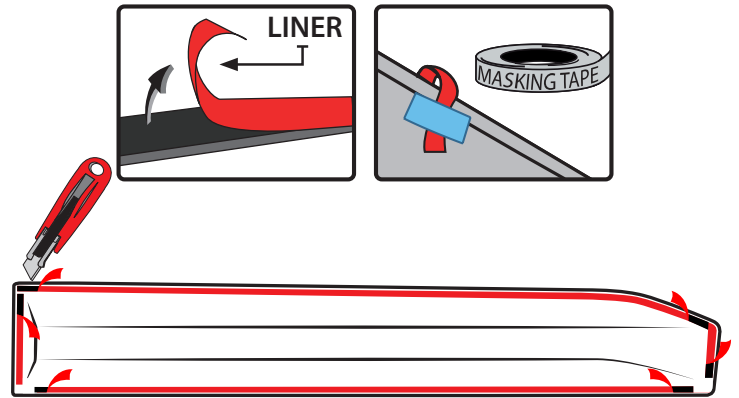


5 CLEAN INNER CHANNEL



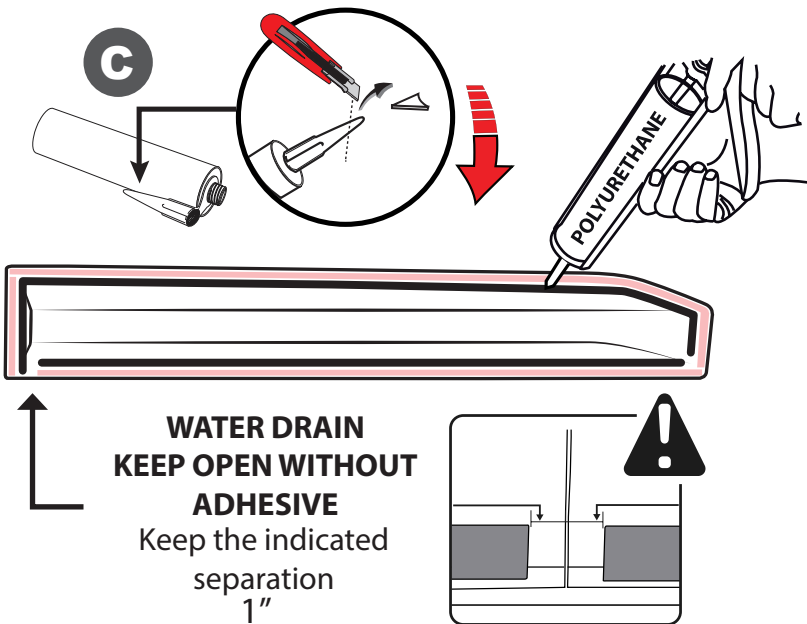
! CLEAN THOROUGHLY TO ENSURE PROPER ADHESION

6 PEEL

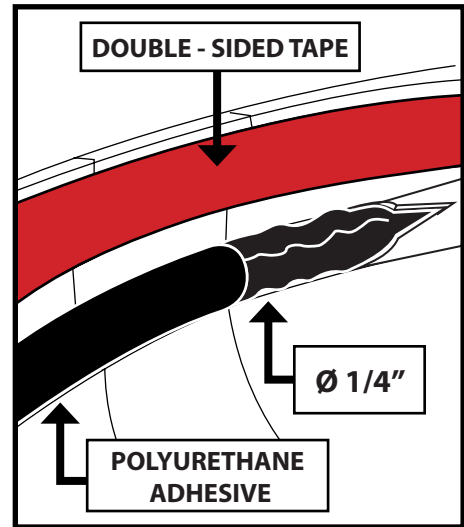


! STICK THE LINER LEAD ON THE OUTSIDE OF THE PART

7 APPLY POLYURETHANE ADHESIVE

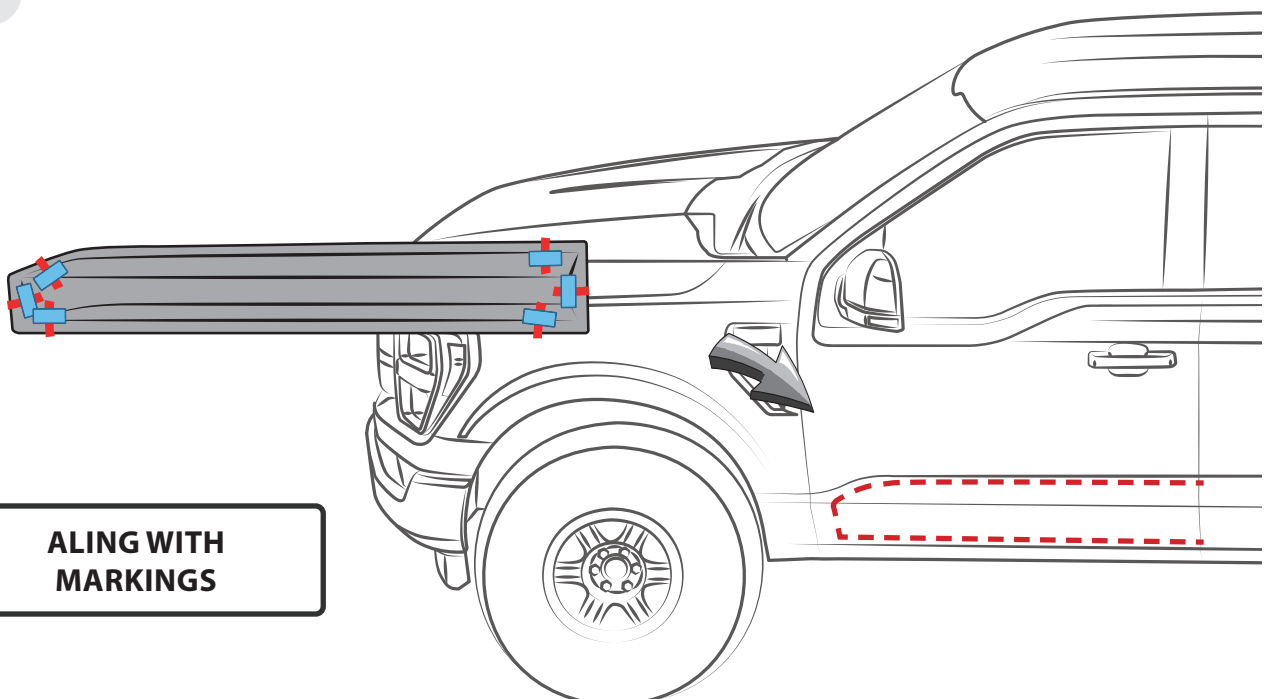


**WATER DRAIN
KEEP OPEN WITHOUT
ADHESIVE**
Keep the indicated
separation
1"



! POLYURETHANE ADHESIVE MUST NEVER TOUCH DOUBLE SIDED TAPE

8 PLACE

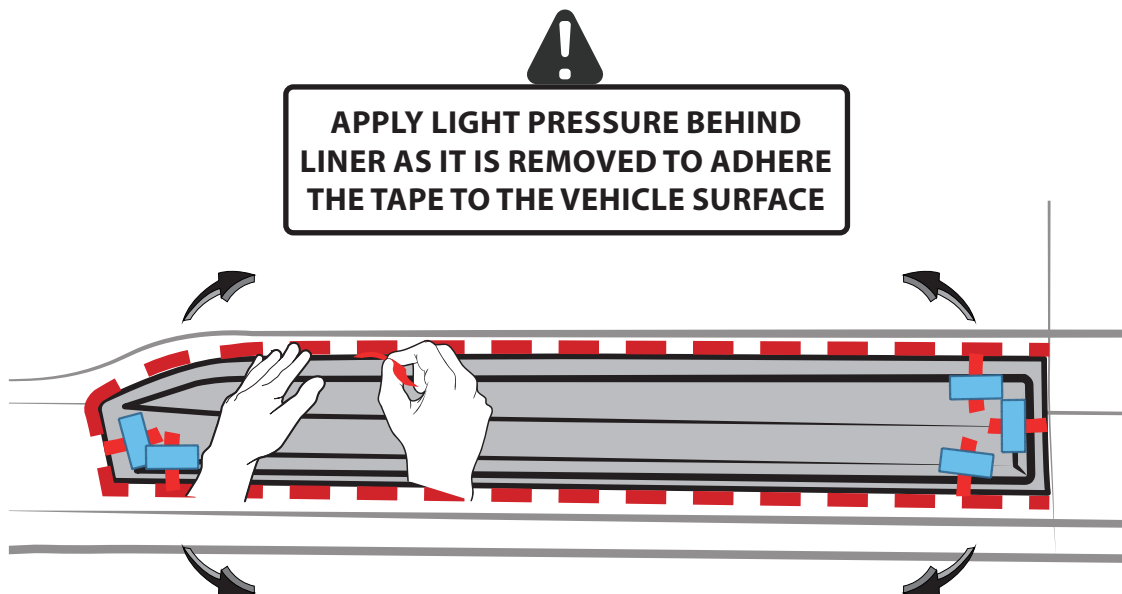


! ALING WITH MARKINGS

CREW CAB DOOR ROCKER PANEL SET

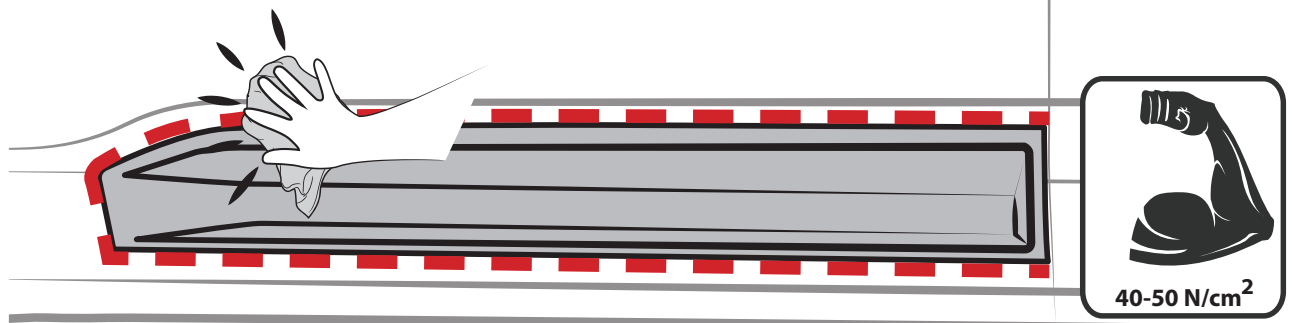
PART NUMBER: FO31D10

9 REMOVE LINER

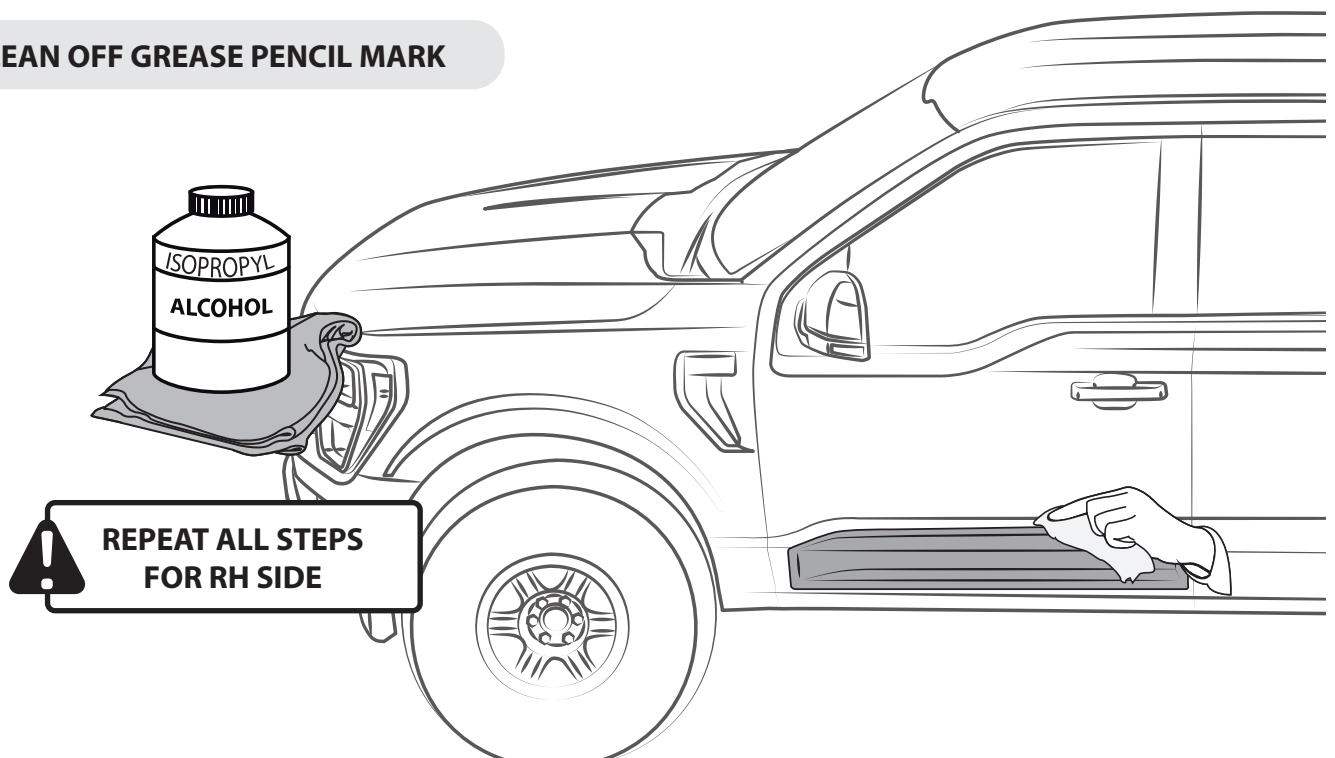


10 PRESS FIRMLY

DURING APPLICATION, THE VEHICLE, ADD ON PARTS AND TAPE MUST BE AT OR ABOVE 16 °C OR 60 °F. A FULL SURFACE CONTACT BETWEEN TAPE AND SUBSTRATE IS IMPORTANT FOR GOOD ADHESION PERFORMANCE. CONTACT IS ACHIEVED BY APPLYING PRESSURE. IN PRACTICE, A PRESSURE BETWEEN 40 AND 50 N/cm² IS USUALLY NEEDED.



11 CLEAN OFF GREASE PENCIL MARK

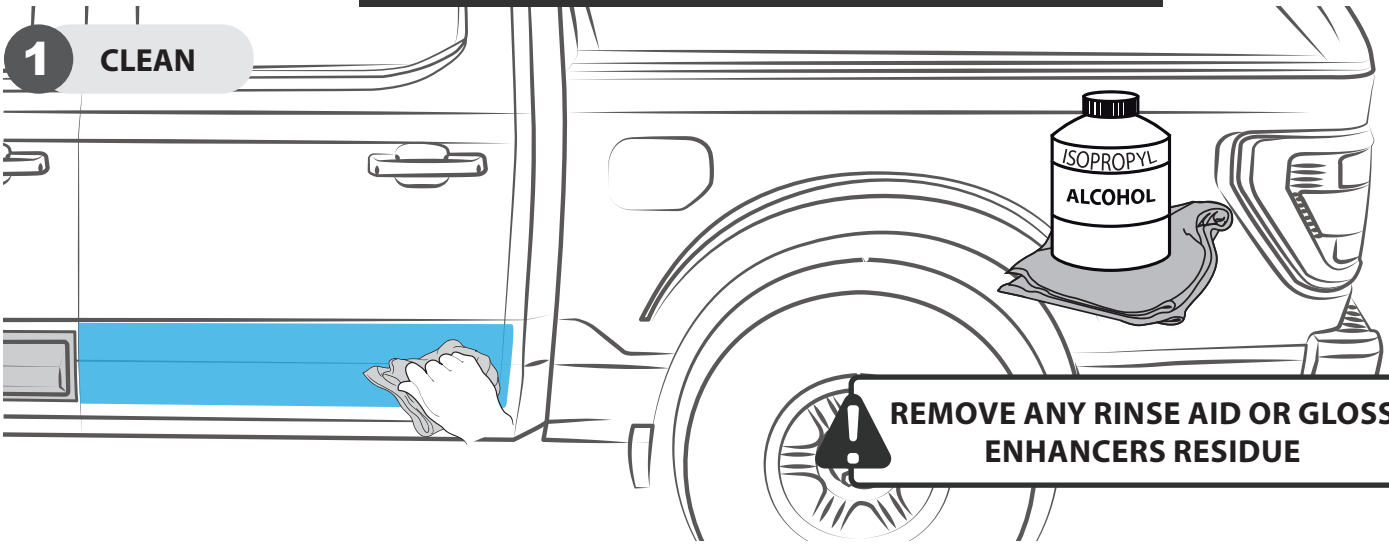




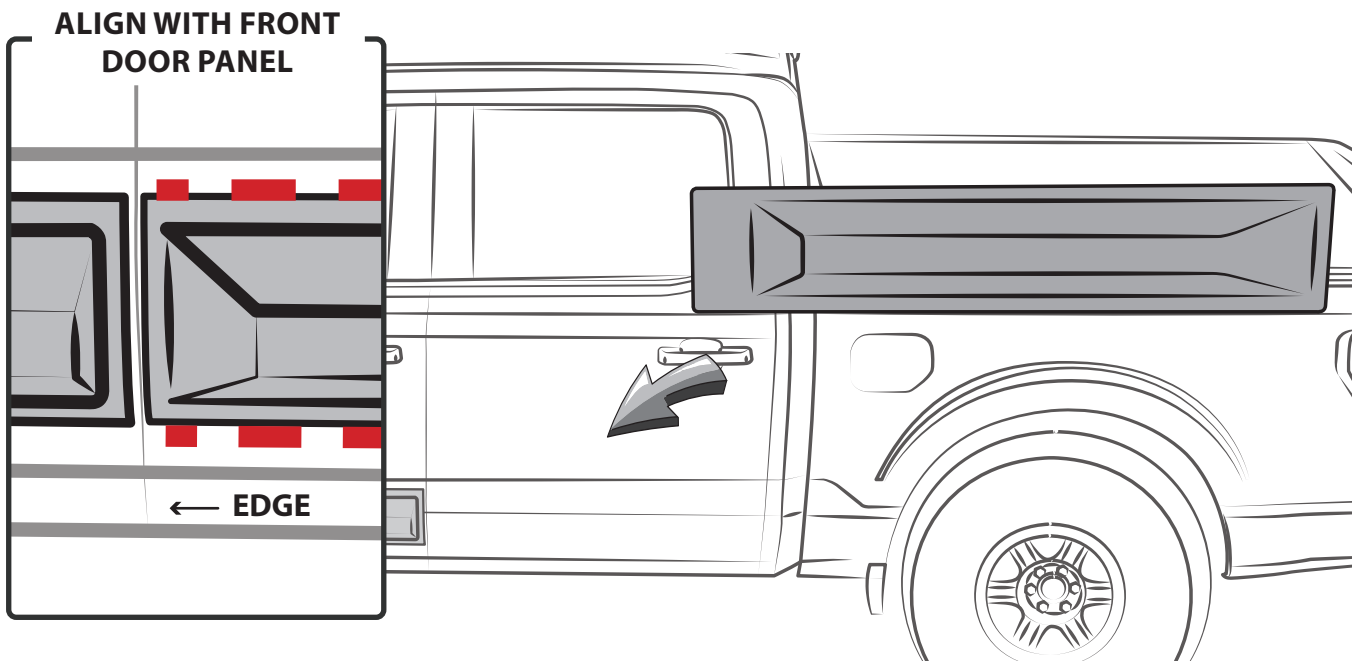
THE IDEAL TEMPERATURE RANGE OF THE PART AND THE VEHICLE WHEN INSTALLING MUST BE 16°C (60°F) TO 40°C (104°F), THIS GUARANTEES A CORRECT ASSEMBLY.

REAR ROCKER PANEL

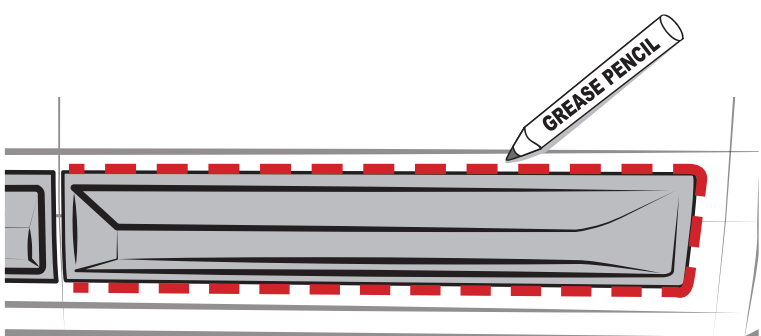
1 CLEAN



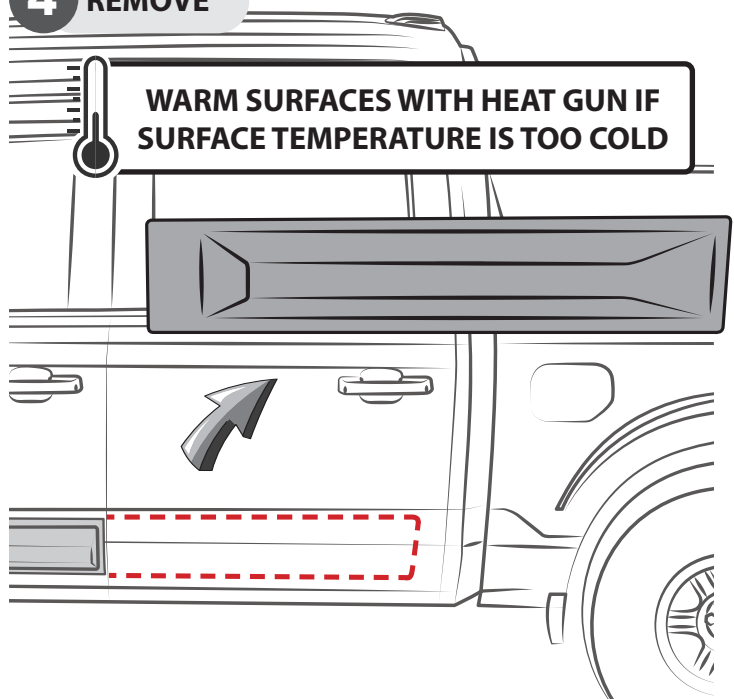
2 TEST FIT THE PART



3 MARK THE OUTLINE



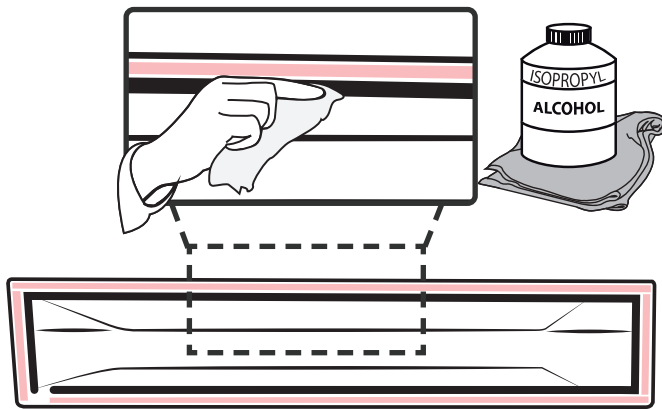
4 REMOVE



CREW CAB DOOR ROCKER PANEL SET

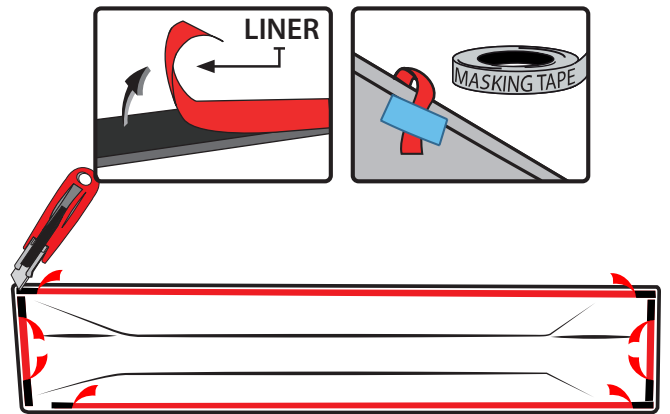
PART NUMBER: FO31D10

5 CLEAN INNER CHANNEL



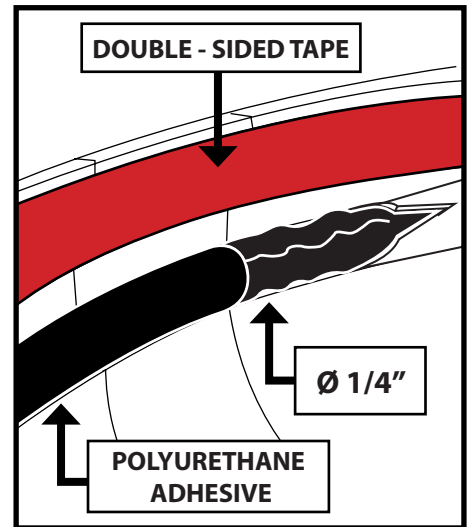
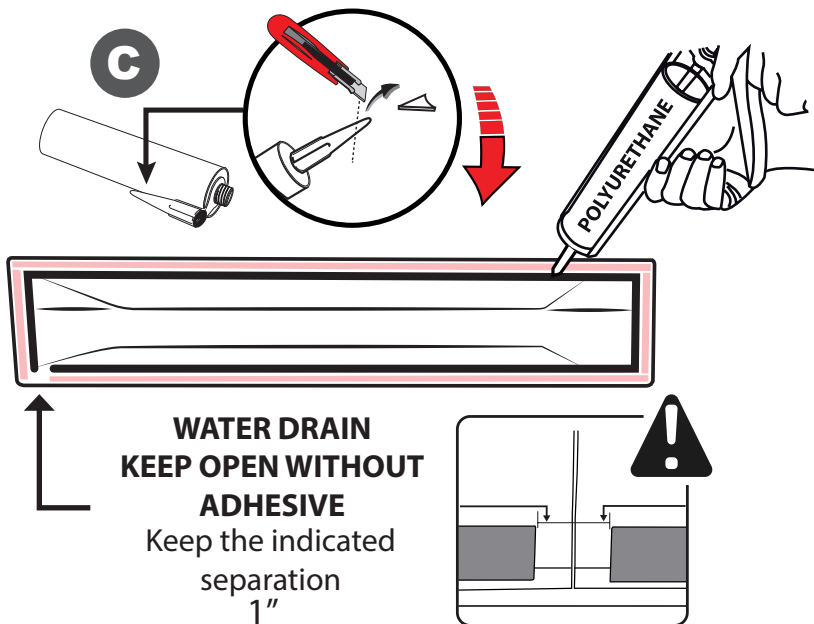
! CLEAN THOROUGHLY TO ENSURE PROPER ADHESION

6 PEEL



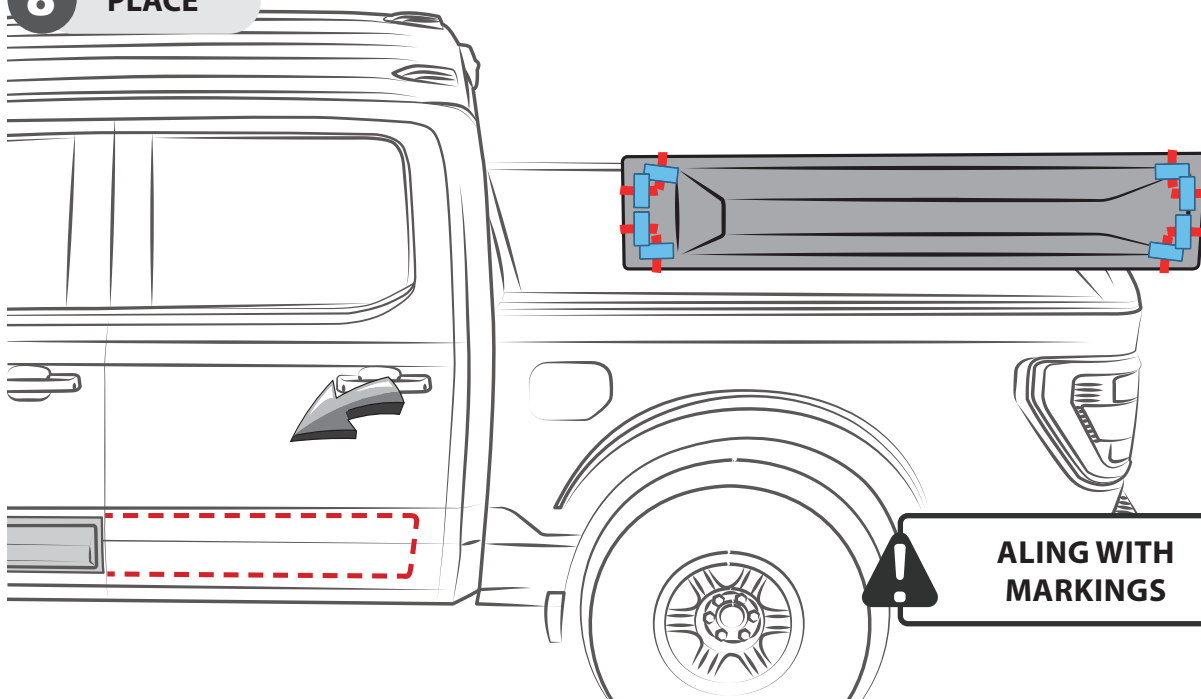
! STICK THE LINER LEAD ON THE OUTSIDE OF THE PART

7 APPLY POLYURETHANE ADHESIVE



! POLYURETHANE ADHESIVE MUST NEVER TOUCH DOUBLE SIDED TAPE

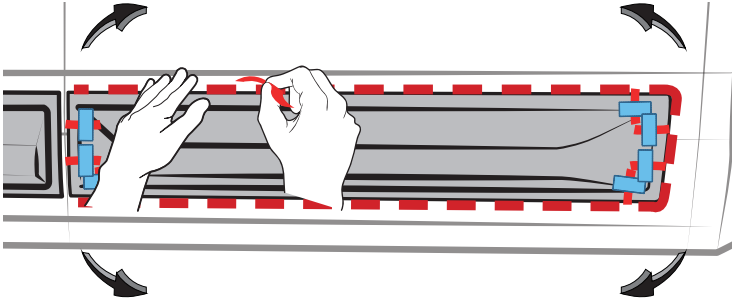
8 PLACE



! ALING WITH MARKINGS

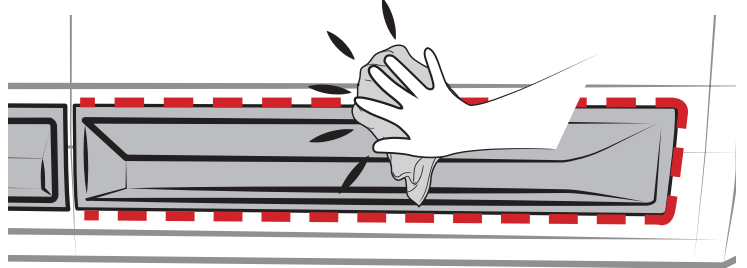
9 REMOVE THE LINER

APPLY LIGHT PRESSURE BEHIND LINER AS IT IS REMOVED TO ADHERE THE TAPE TO THE VEHICLE SURFACE

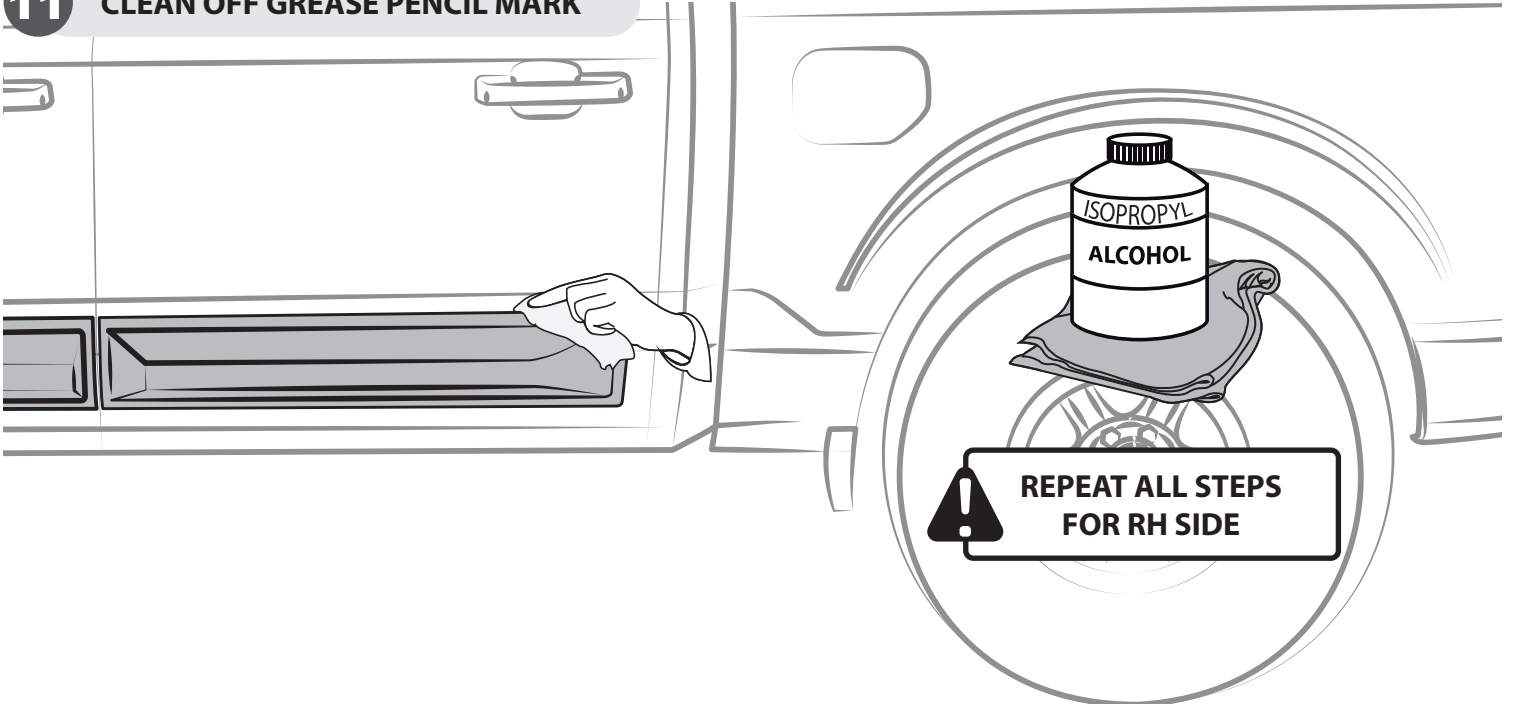


10 PRESS FIRMLY

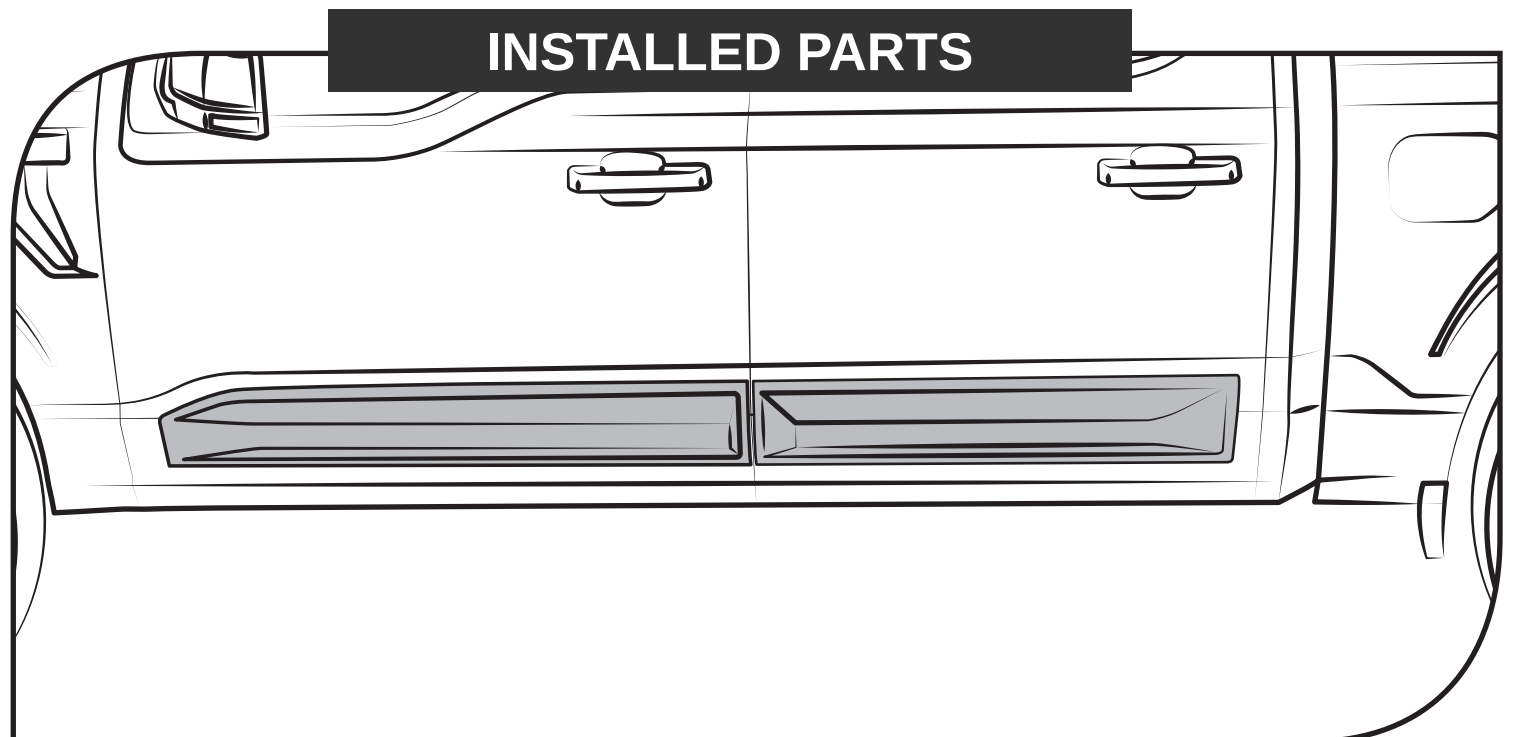
DURING APPLICATION, THE VEHICLE, ADD ON PARTS AND TAPE MUST BE AT OR ABOVE 16 °C OR 60 °F. A FULL SURFACE CONTACT BETWEEN TAPE AND SUBSTRATE IS IMPORTANT FOR GOOD ADHESION PERFORMANCE. CONTACT IS ACHIEVED BY APPLYING PRESSURE. IN PRACTICE, A PRESSURE BETWEEN 40 AND 50 N/cm² IS USUALLY NEEDED.

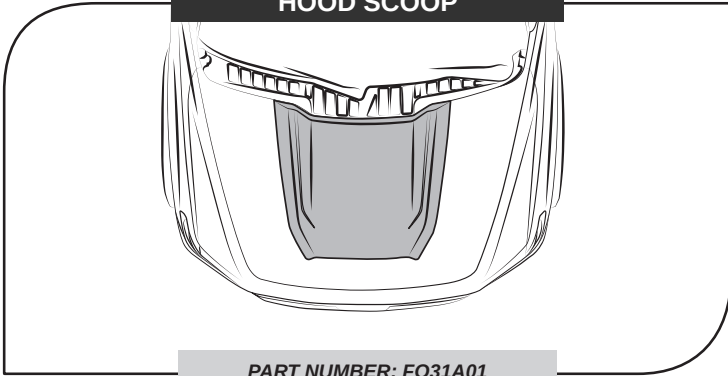


11 CLEAN OFF GREASE PENCIL MARK

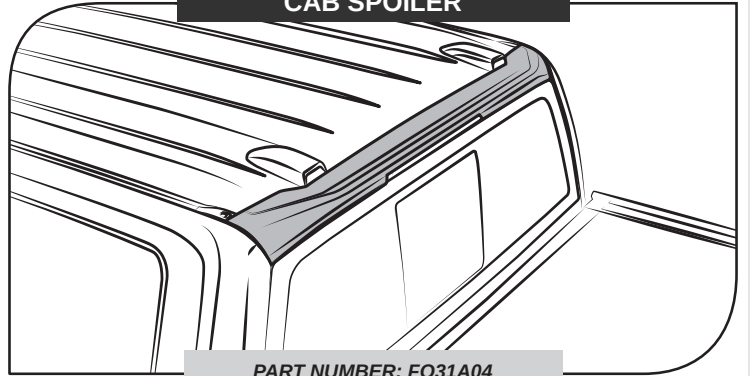


INSTALLED PARTS



BODY KIT OFF ROAD**HOOD SCOOP**

PART NUMBER: FO31A01

CAB SPOILER

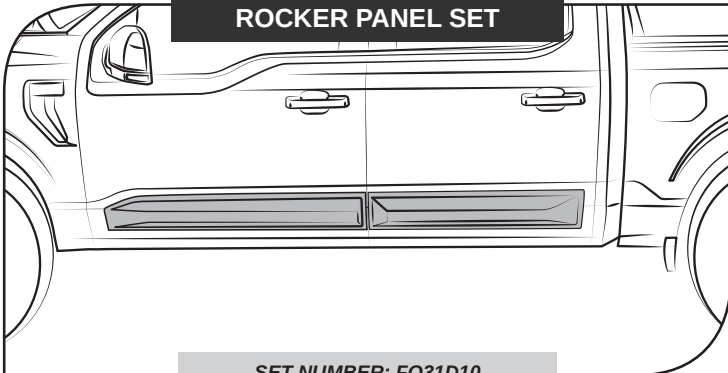
PART NUMBER: FO31A04

TAILGATE SPOILER

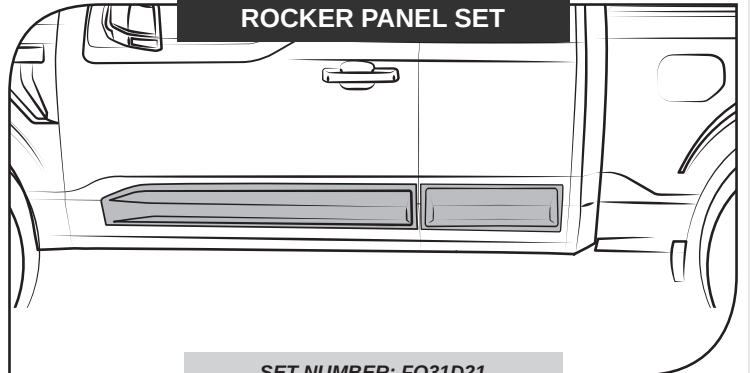
PART NUMBER: FO31A05

TAILGATE APPLIQUE

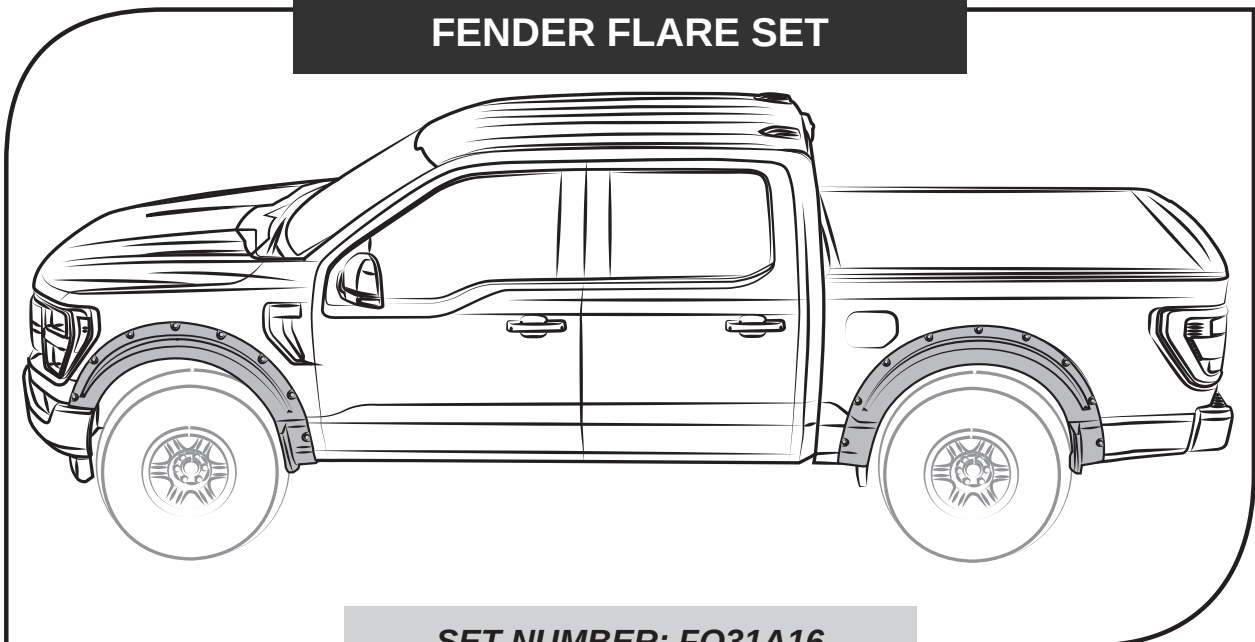
PART NUMBER: FO31A06

**CREW CAB DOOR
ROCKER PANEL SET**

SET NUMBER: FO31D10

**SUPER CAB DOOR
ROCKER PANEL SET**

SET NUMBER: FO31D21

**AIR DESIGN SUPER BOLTS
FENDER FLARE SET**

SET NUMBER: FO31A16