



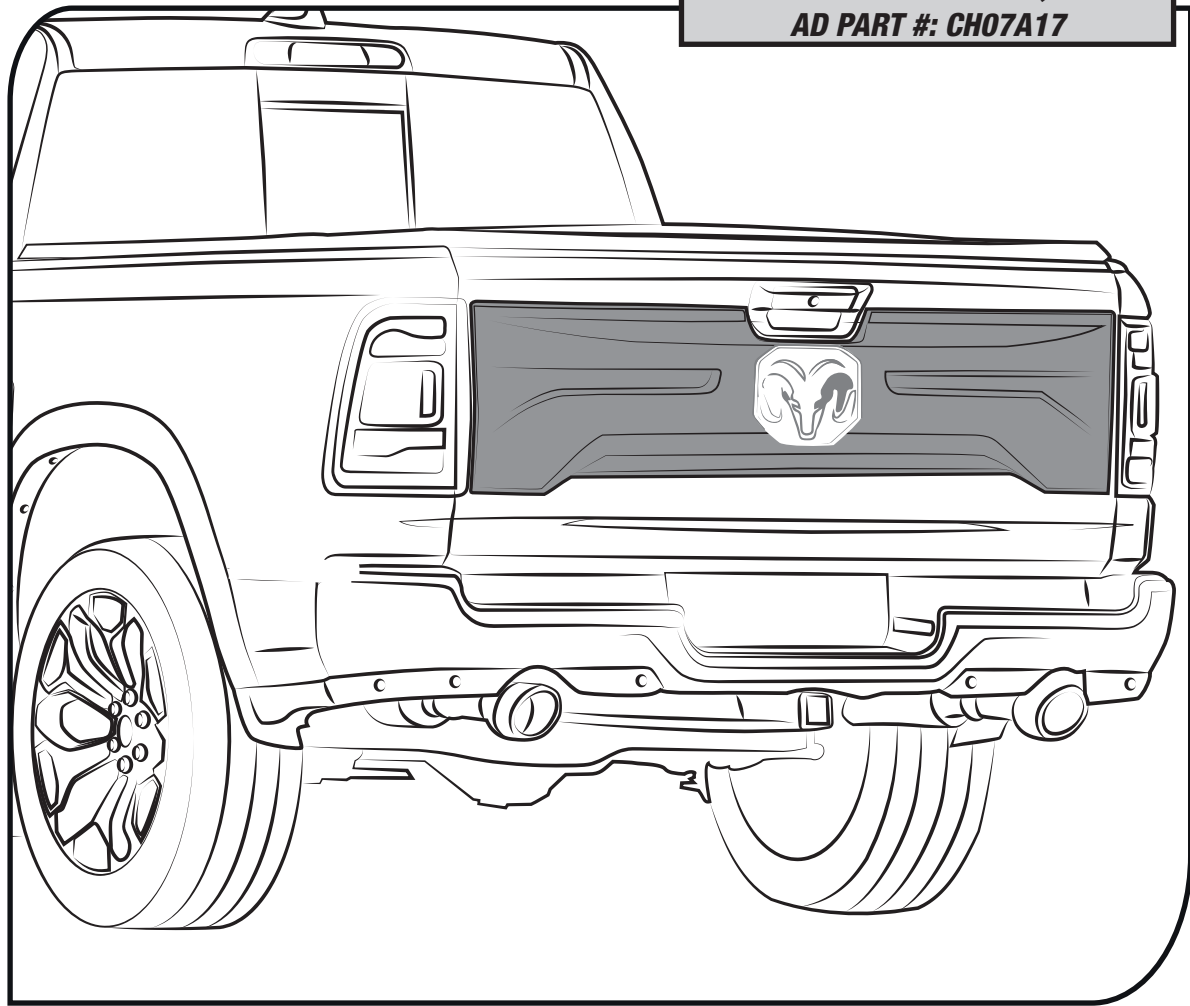
DODGE - RAM 1500 2019

INSTALLATION MANUAL

TAILGATE APPLIQUE
AD PART #: CH07A17


READ CAREFULLY
BEFORE INSTALLATION


WASH BEFORE
INSTALLING




WE RECOMMEND
2 PERSONS FOR
INSTALLATION

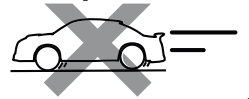
AFTER INSTALLING

DO NOT
WASH CAR




24 hrs

DRIVE SLOWLY
25 mph max



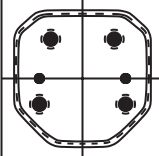


TOOLS



CHECK LIST

***ALREADY INSTALLED IN THE PART**

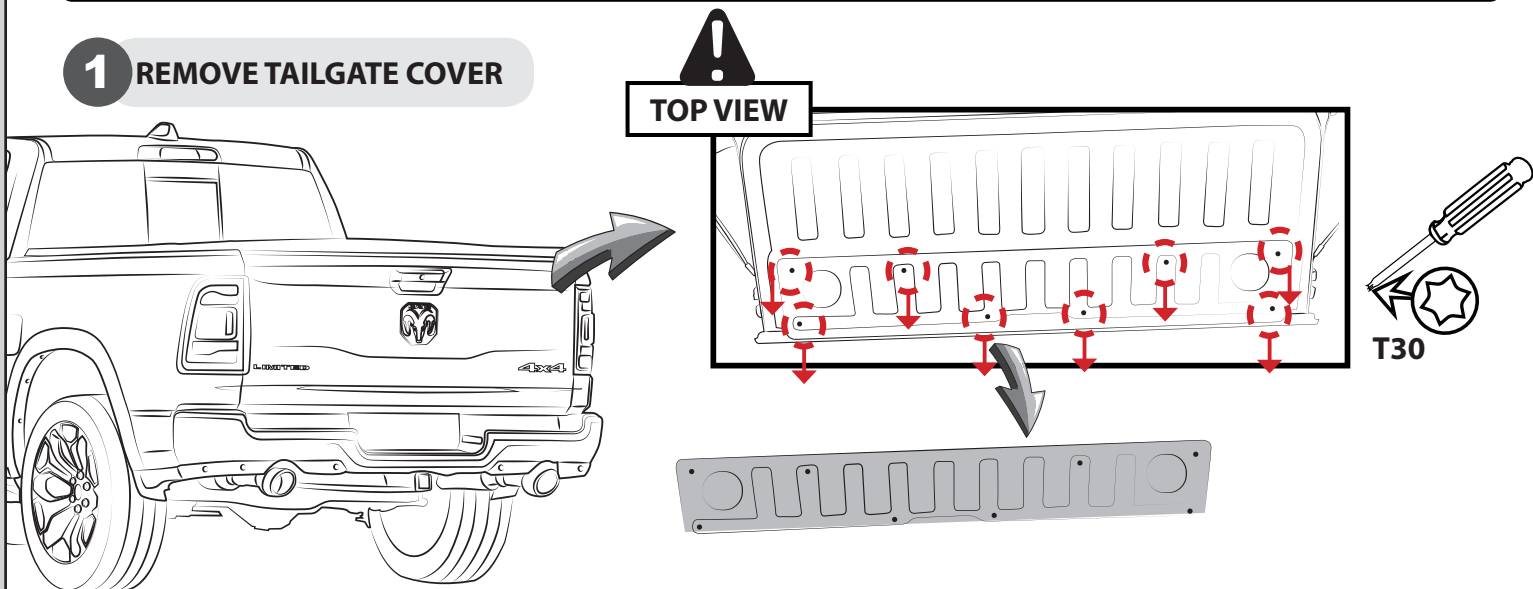
ITEM	DESCRIPTION	DRAWING	AMOUNT
A	*VHB TAPE		*INCLUDED IN THE PART
B	ADHESION PROMOTER		1 PC
C	VHB DIE CUT		1 PC



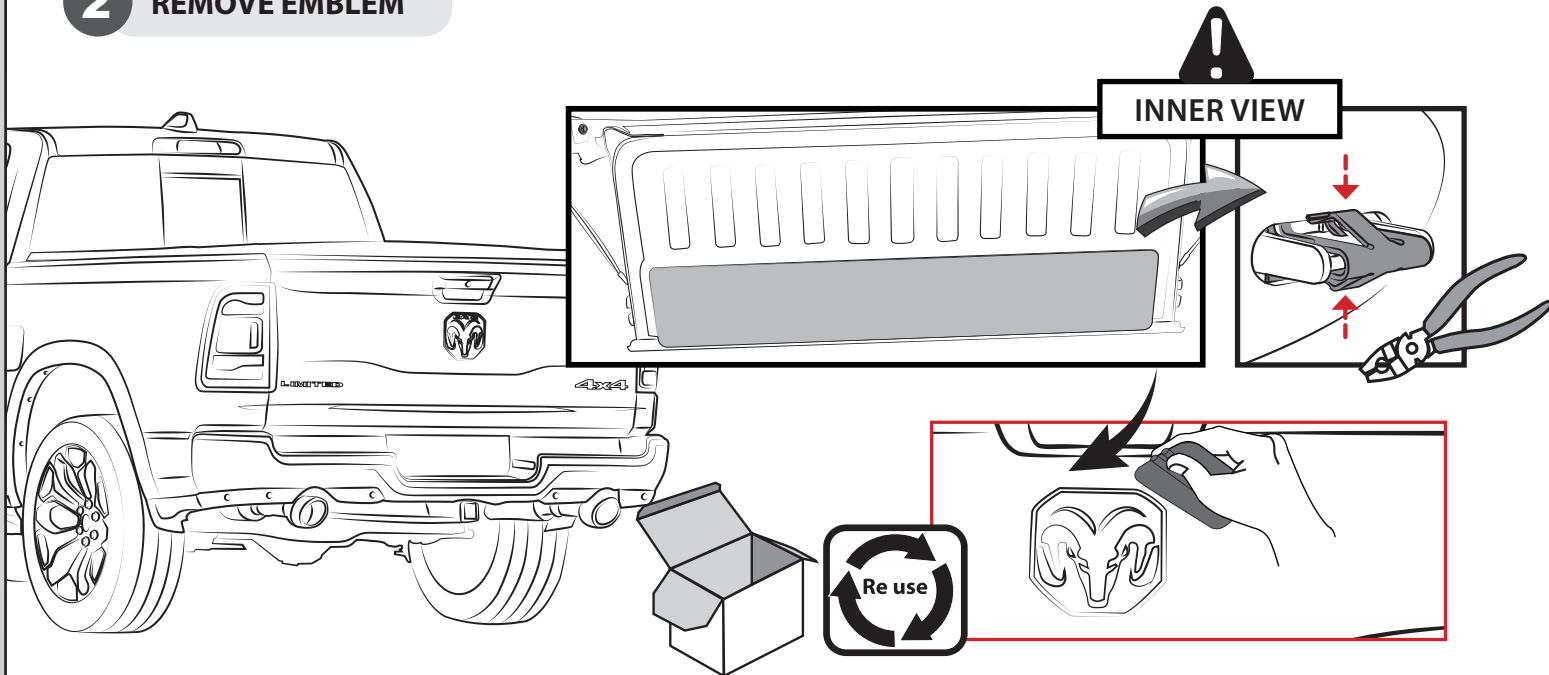
Vehicle and part must be at 16°C or 60°F or more before installation.

Keep the vehicle and parts in an environment that is within the recommended installation temperature range for 4 hours.

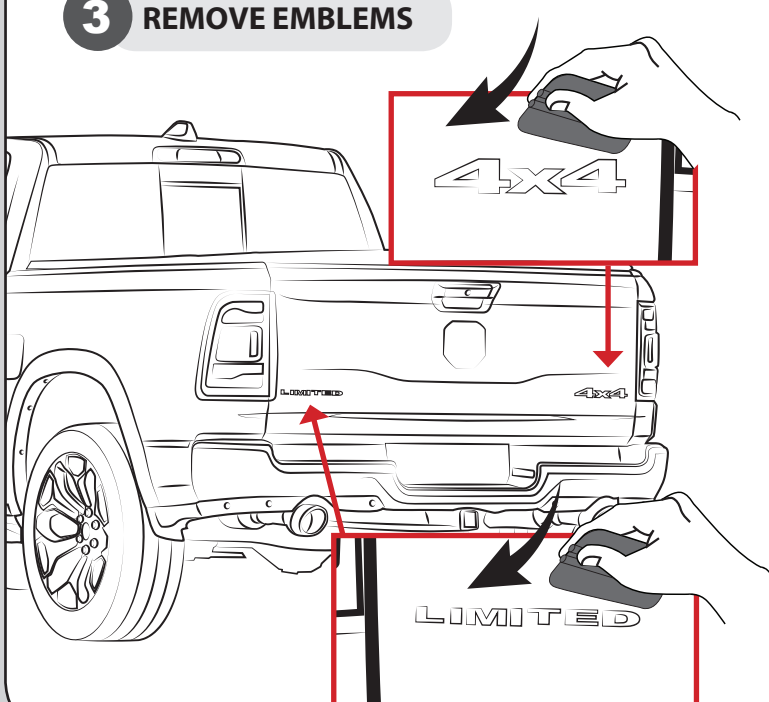
1 REMOVE TAILGATE COVER



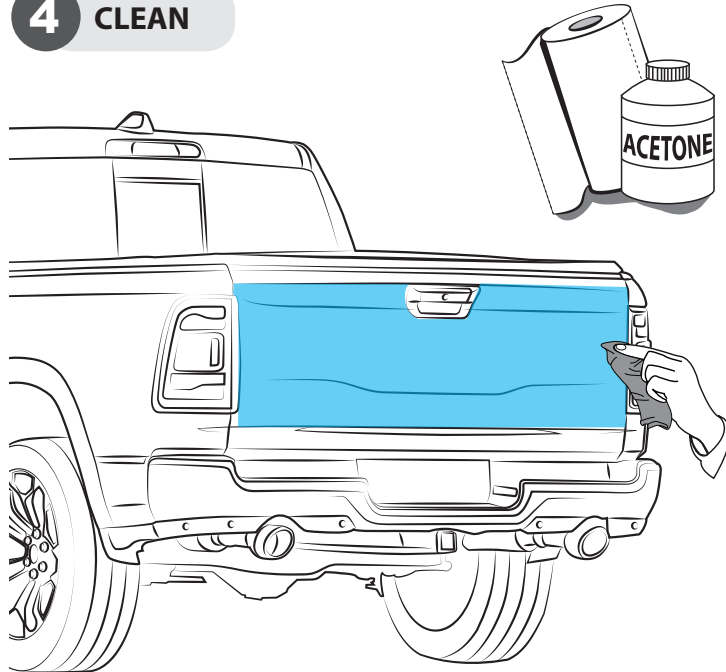
2 REMOVE EMBLEM



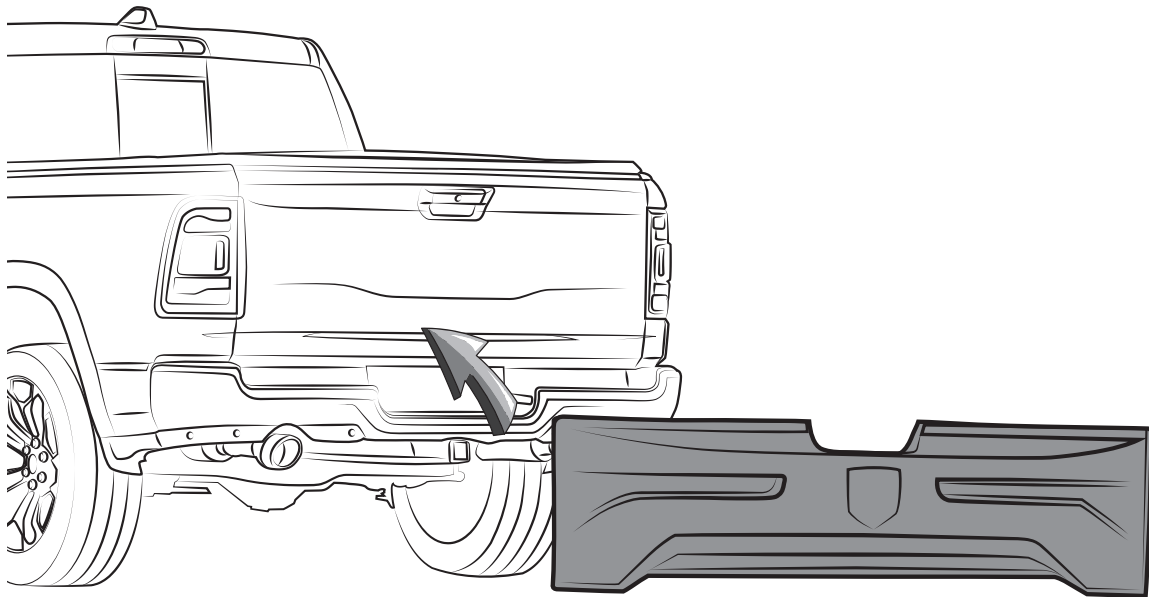
3 REMOVE EMBLEMS



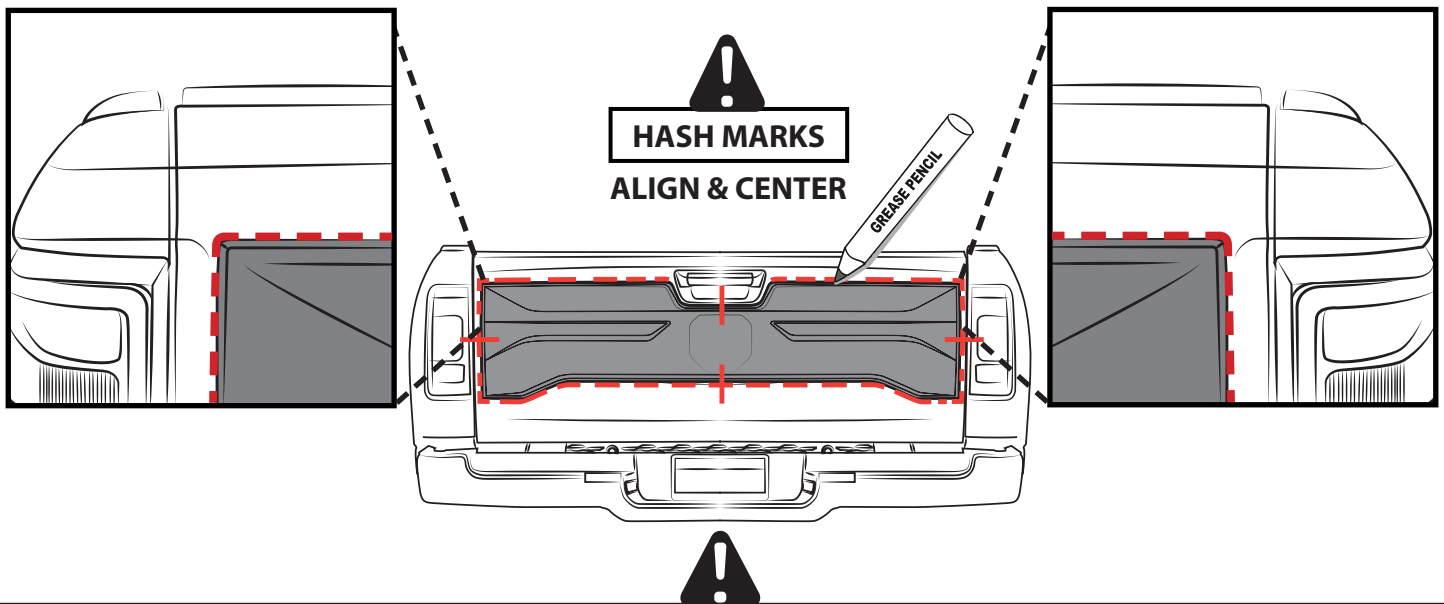
4 CLEAN



5 PRE-INSTALL

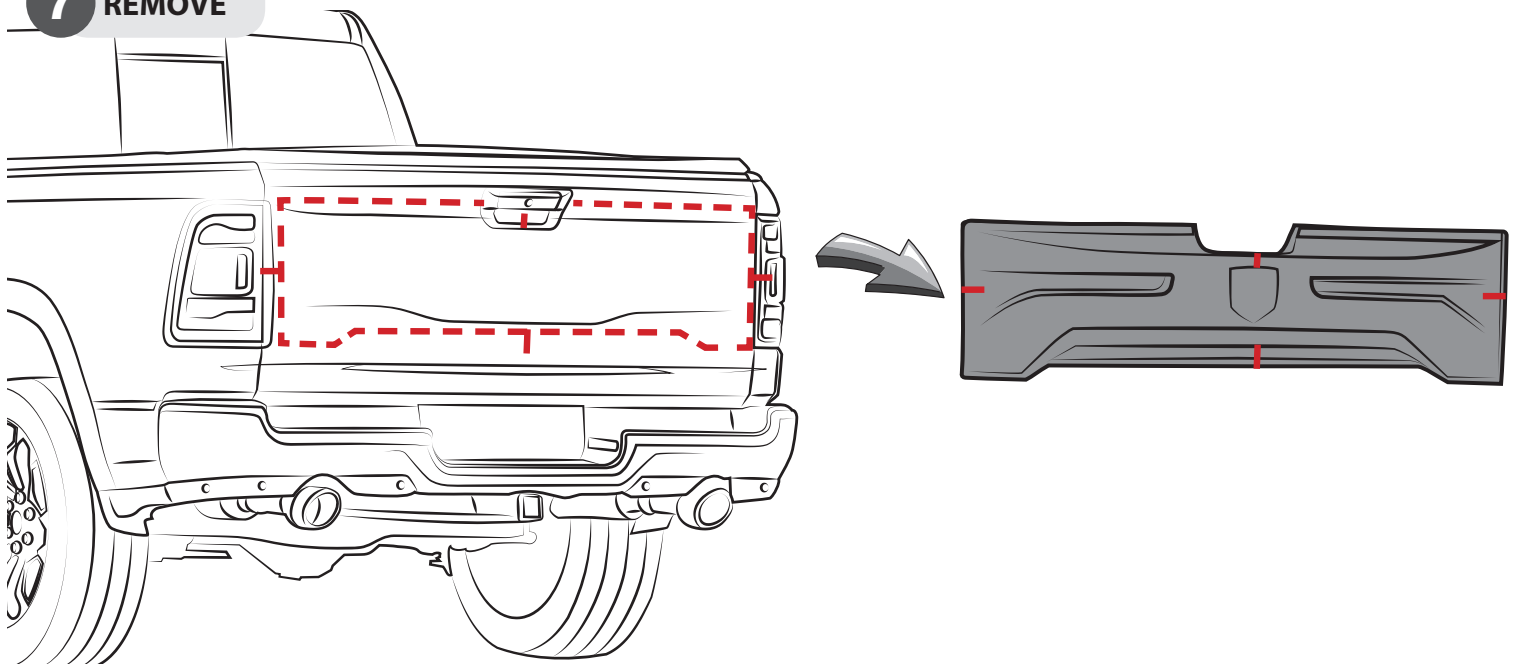


6 MARK

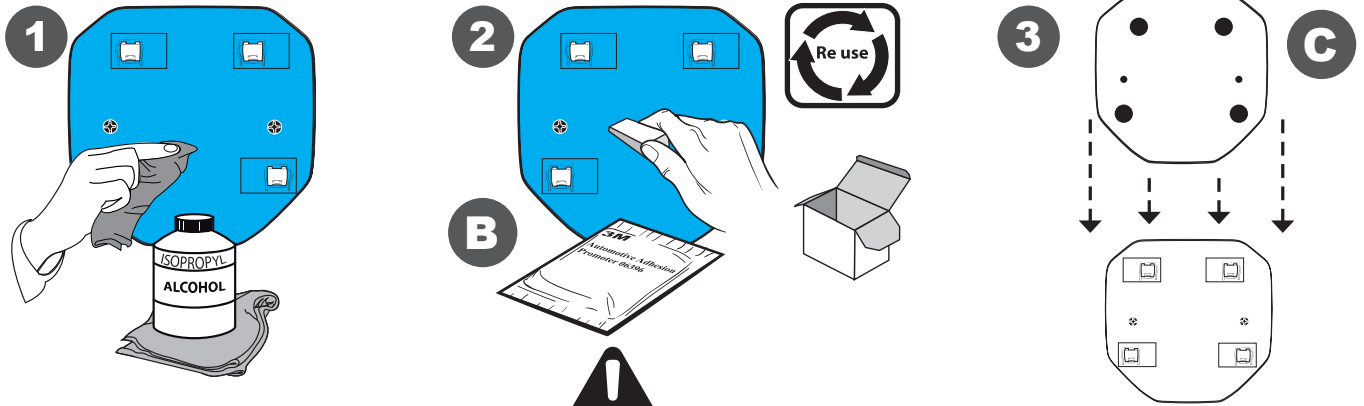


DRAW HASH MARK WITH GREASE PENCIL ON TAILGATE APPLIQUE AND SHEET METAL, THIS WILL ENSURE TAILGATE APPLIQUE WILL BE CENTERED TO GREASE PENCIL OUTLINE.

7 REMOVE



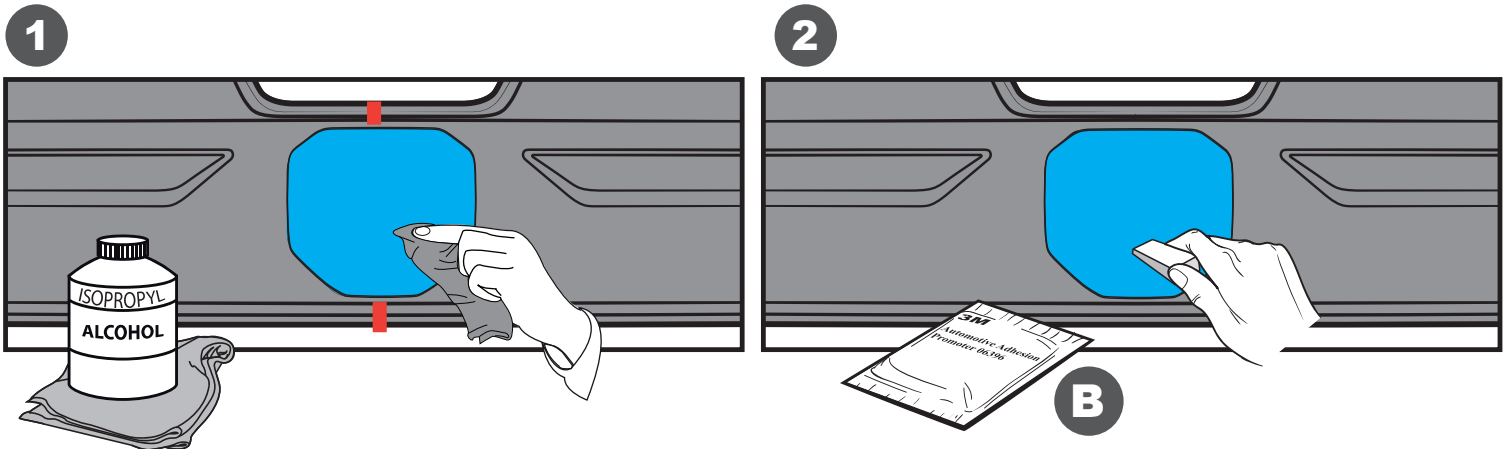
8 PLACE DIE CUT



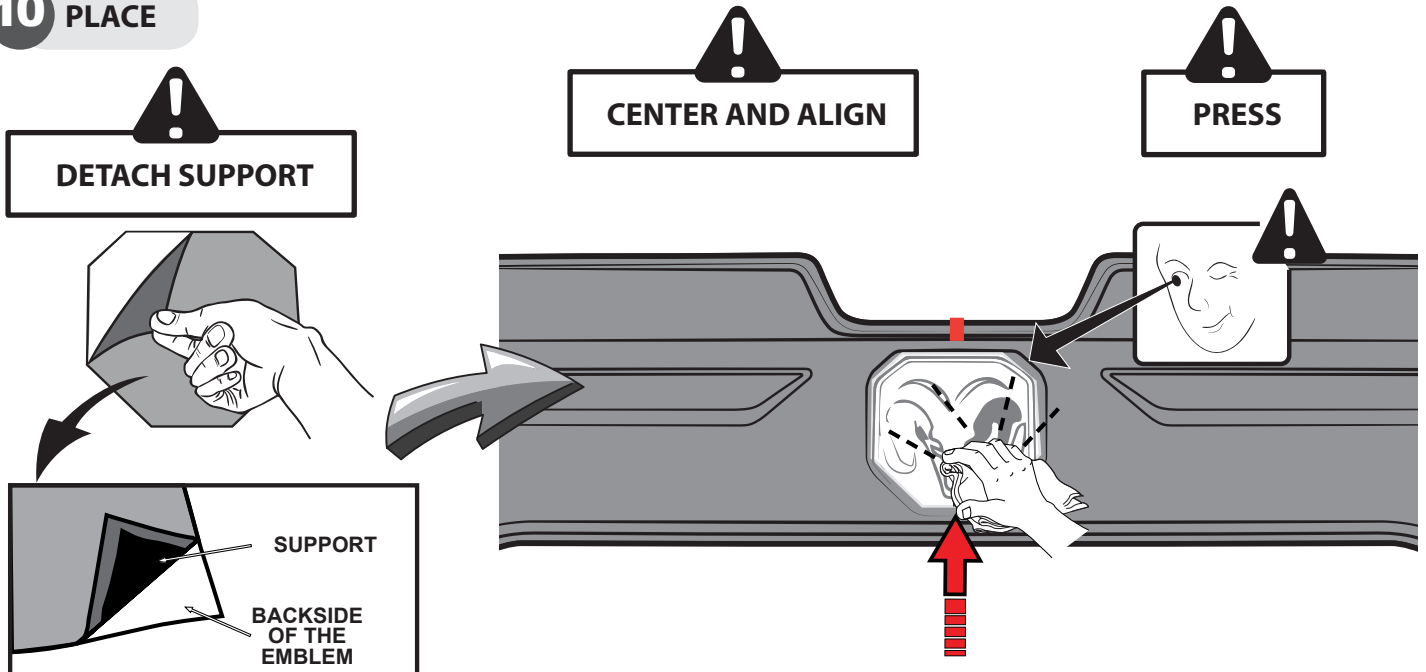
1. FIRST CLEAN THE BACKSIDE OF THE EMBLEM THOROUGHLY WITH ALCOHOL, WIPE OFF WITH A CLEAN CLOTH.
2. THEN APPLY ADHESION PROMOTER ALL OVER THE AREA.
3. PLACE VHB DIE CUT TO THE ORIGINAL EMBLEM

9 ADHESION PROMOTER

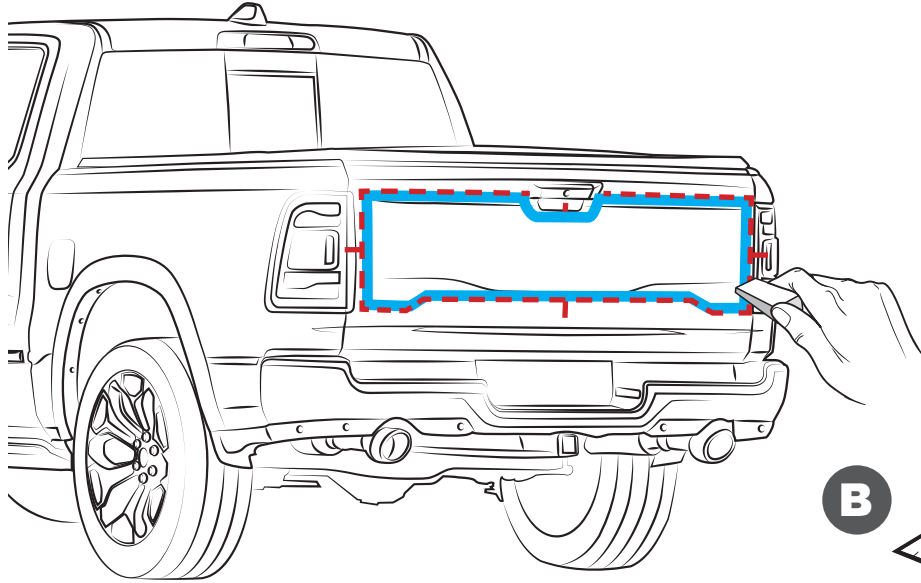
1. FIRST CLEAN ALL OVER THE APPLICATION AREA WITH ALCOHOL
2. THEN APPLY ADHESION PROMOTER ALL OVER THE AREA



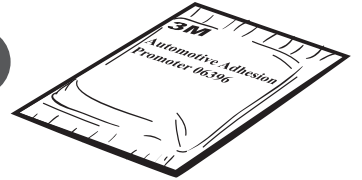
10 PLACE



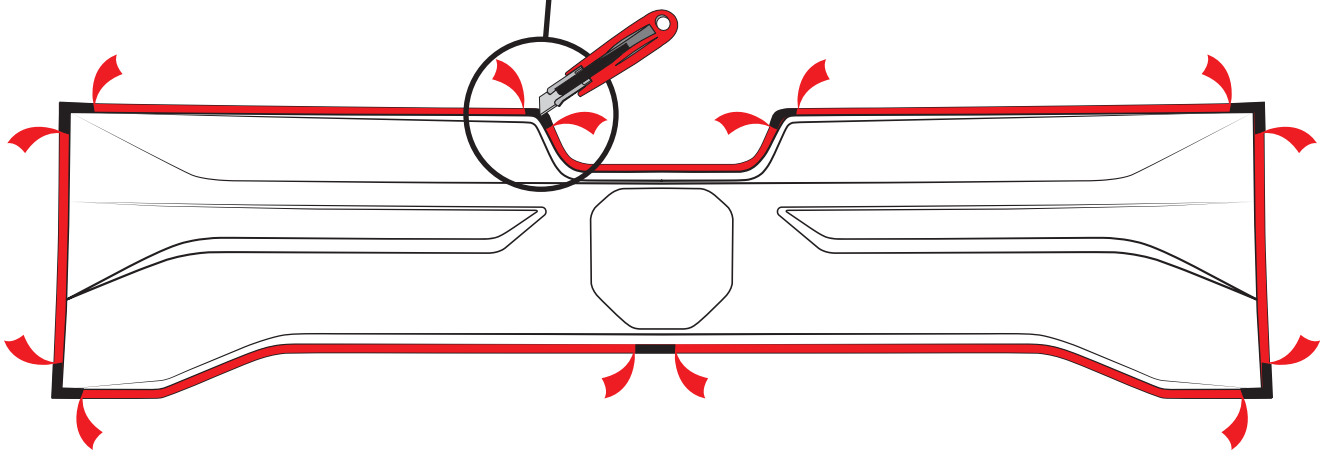
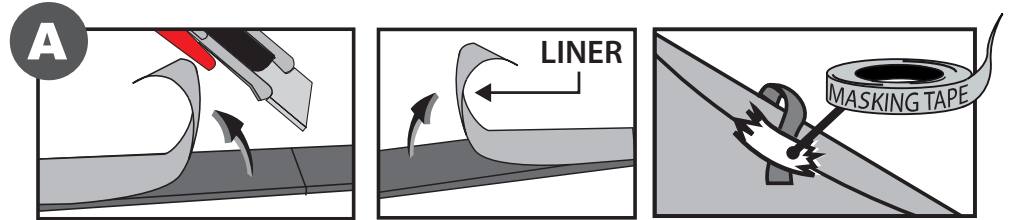
11 ADHESION PROMOTER



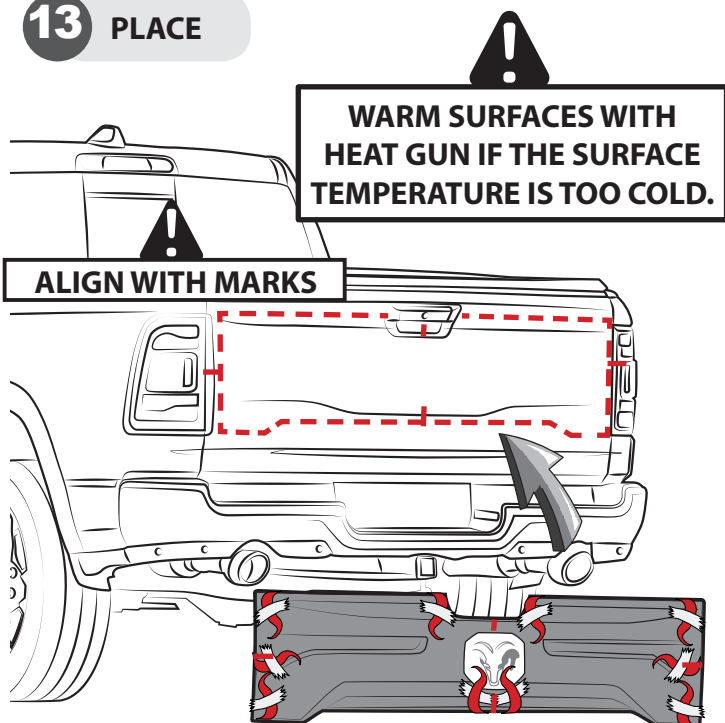
B



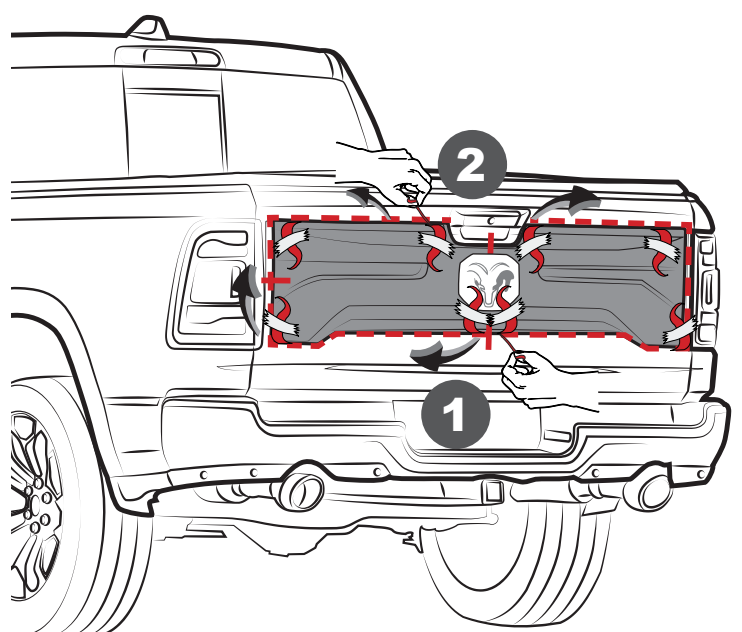
12 PEEL



13 PLACE

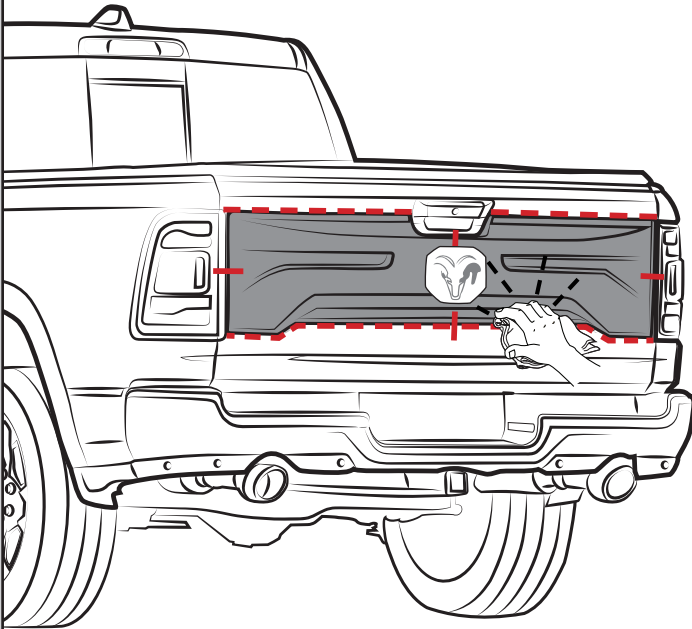


14 REMOVE LINER



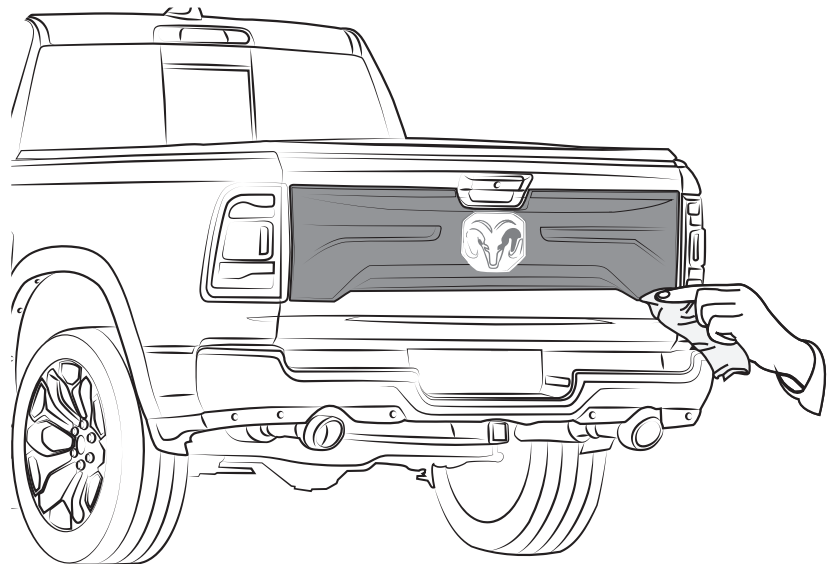
INSTALLATION MANUAL

15 PRESS

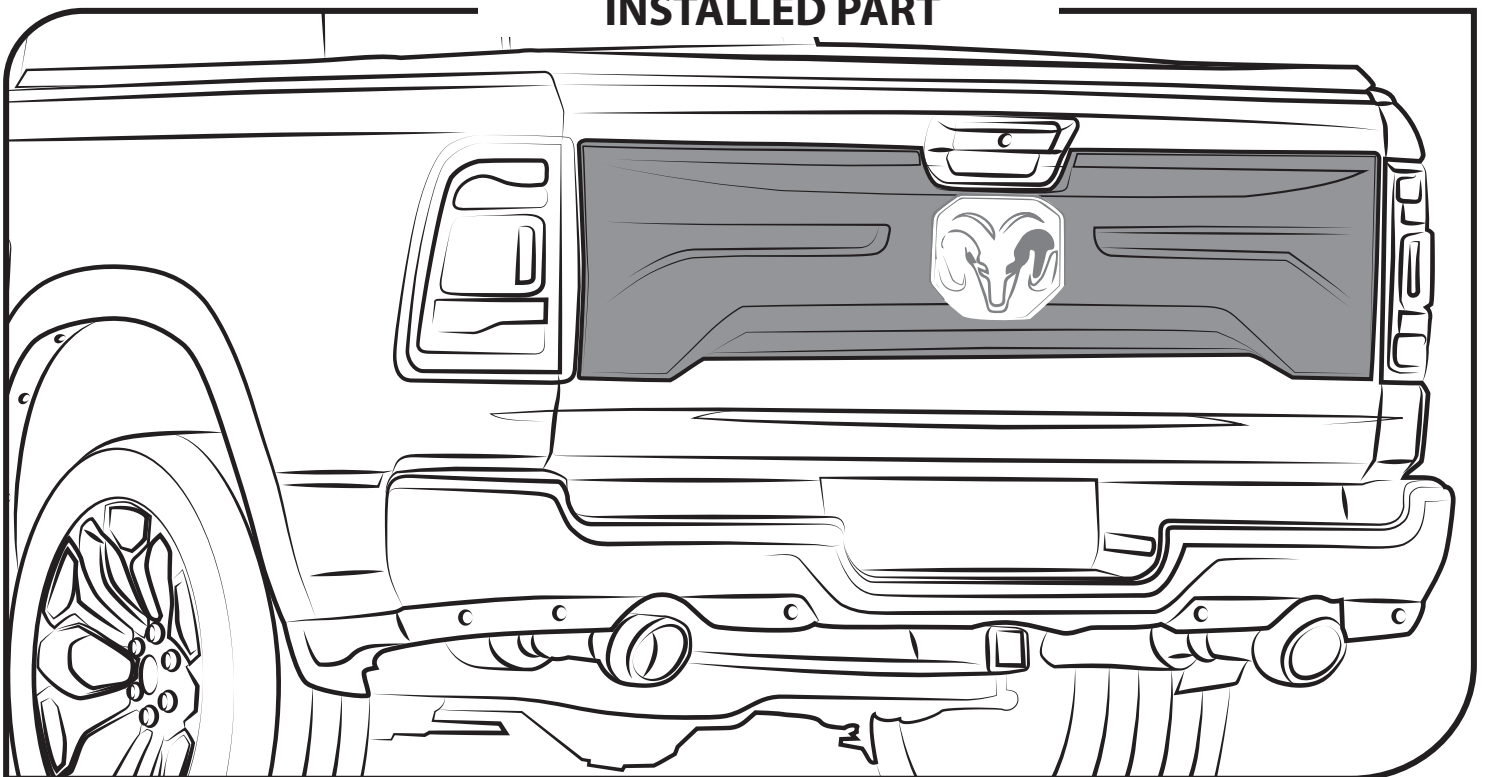


DURING APPLICATION, THE VEHICLE, ADD ON PARTS AND TAPE MUST BE AT OR ABOVE 16 °C OR 60 °F. A FULL SURFACE CONTACT BETWEEN TAPE AND SUBSTRATE IS IMPORTANT FOR GOOD ADHESION PERFORMANCE. CONTACT IS ACHIEVED BY APPLYING PRESSURE. IN PRACTICE A PRESSURE BETWEEN 40 AND 50 N/CM² IS USUALLY NEEDED.

16 CLEAN OFF GREASE PENCIL MARK



INSTALLED PART




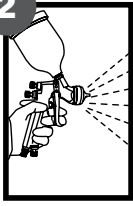
INSTRUCTIONS PAINTING


IF THE PART IS IN FIRST, APPLY THE FOLLOWING PROCESS


! PLEASE READ CAREFULLY BEFORE STARTING WITH PAINTING PROCESS


BODYCOLOR PAINTING INSTRUCTIONS


- 

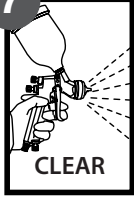
1 SAND THE PART SOFTLY WITH A 400 GRAINS SAND PAPER OR WITH A SCOTCH-BRITE RED SPONGE. BE CAREFUL NOT TO DAMAGE FACTORY SATIN BLACK FINISH. CLEAN WITH ISOPROPYL ALCOHOL AFTERWARDS.
- 


2 APPLY A GOOD QUALITY 2K PRIMER.
- 

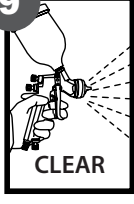
3 CHECK THE PARTS MINUTELY, THESE MUST HAVE A SMOOTH FINISH.
- 

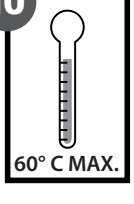
4 DUST ANY POWDER PARTICLE WITH A FLANNEL TOWEL BEFORE APPLYING THE PAINT.
- 

5 APPLY BASE COAT TO GET A SMOOTH AND FINE FINISH.
CLEAR
- 

6 WAIT 15 MINUTES, CHECK MINUTELY AND DETAIL WHERE NECESSARY.
15 MIN
- 

7 APPLY A THIN LAYER OF VARNISH.
CLEAR
- 

8 WAIT 5 MORE MINUTES.
5 MIN
- 

9 VARNISH PLENTY UNTIL YOU GET THE DESIRED BRIGHT AND FINISH. WAIT 5 MORE MINUTES.
CLEAR
- 

10 CURE AT A MAXIMUM TEMPERATURE OF 60°C (140°F) FOR 15 MINUTES. DO NOT EXCEED SUGGESTED TEMPERATURE.
60° C MAX.

! IMPORTANT !
MAKE SURE THE PART IS SECURED CORRECTLY TO THE BASE DURING PAINT AND CURE PROCESS TO AVOID ANY RISK OF FALLING.