



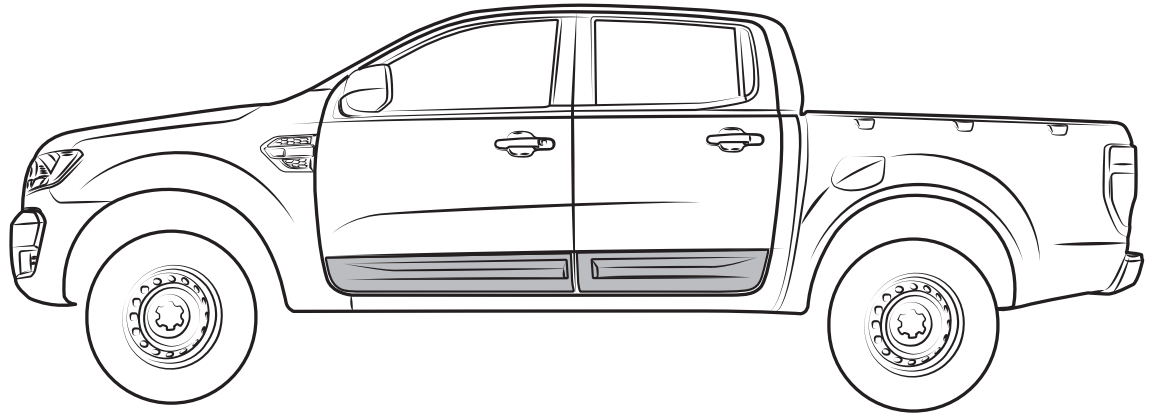
DODGE - RAM 1500 2019

INSTALLATION MANUAL

DOOR ROCKER PANEL SET AD PART #: CH07D06



**READ CAREFULLY
BEFORE INSTALLATION**

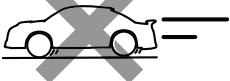

**WASH BEFORE
INSTALLING**




**WE RECOMMEND
2 PERSONS FOR
INSTALLATION**

AFTER INSTALLING

DO NOT WASH CAR  **DRIVE SLOWLY**
24 hrs **25 mph max**





TOOLS



CHECK LIST

***ALREADY INSTALLED IN THE PART**

ITEM	DESCRIPTION	DRAWING	AMOUNT
A	*VHB TAPE		*INCLUDED IN THE PART
B	POLYURETHANE ADHESIVE 310 ml.		1 PC

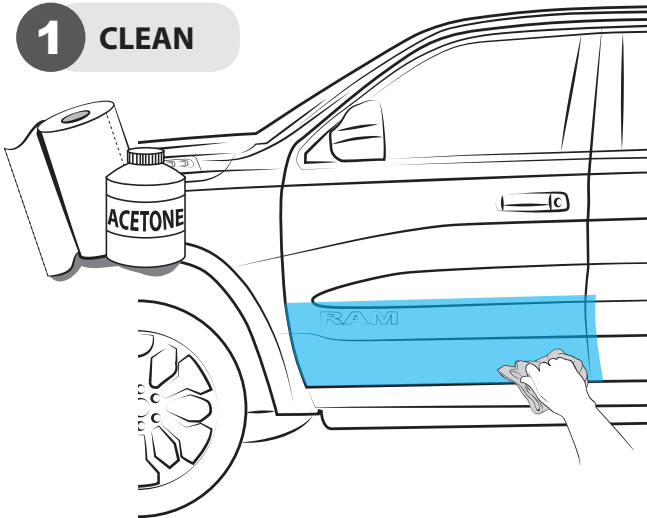


Vehicle and part must be at 16°C or 60°F or more before installation.

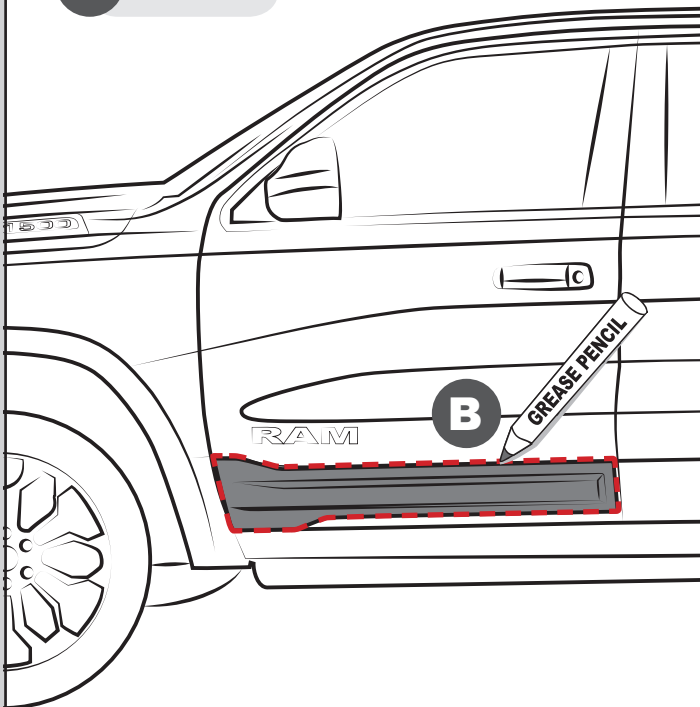
Keep the vehicle and parts in an environment that is within the recommended installation temperature range for 4 hours.

FRONT ROCKER PANEL

1 CLEAN



3 MARK

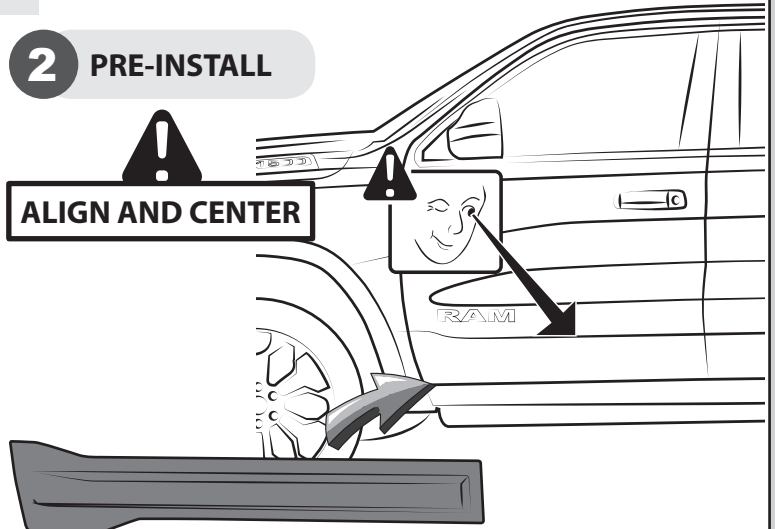


5 CLEAN INNER CHANNEL

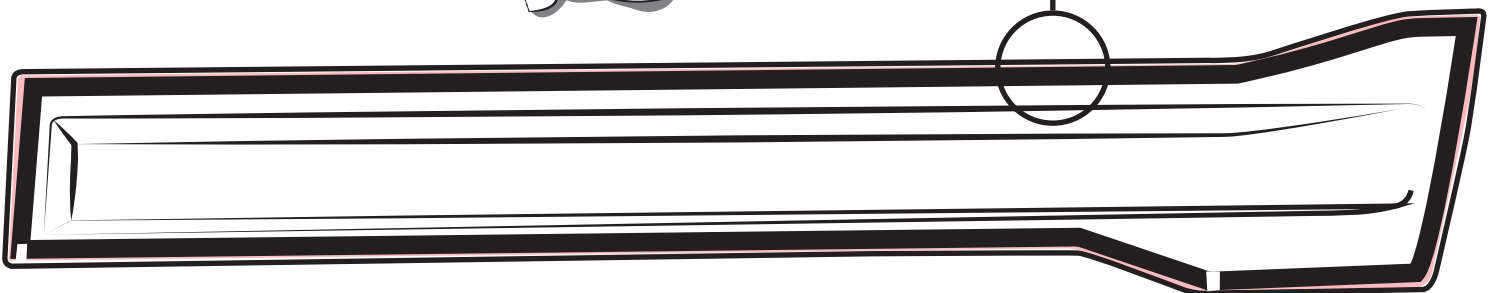
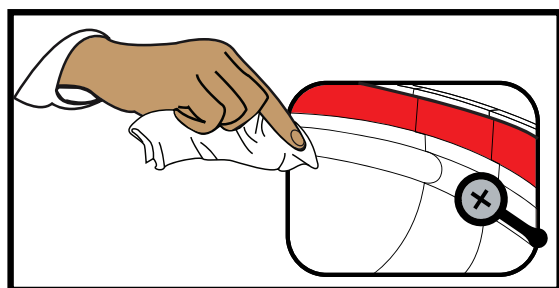
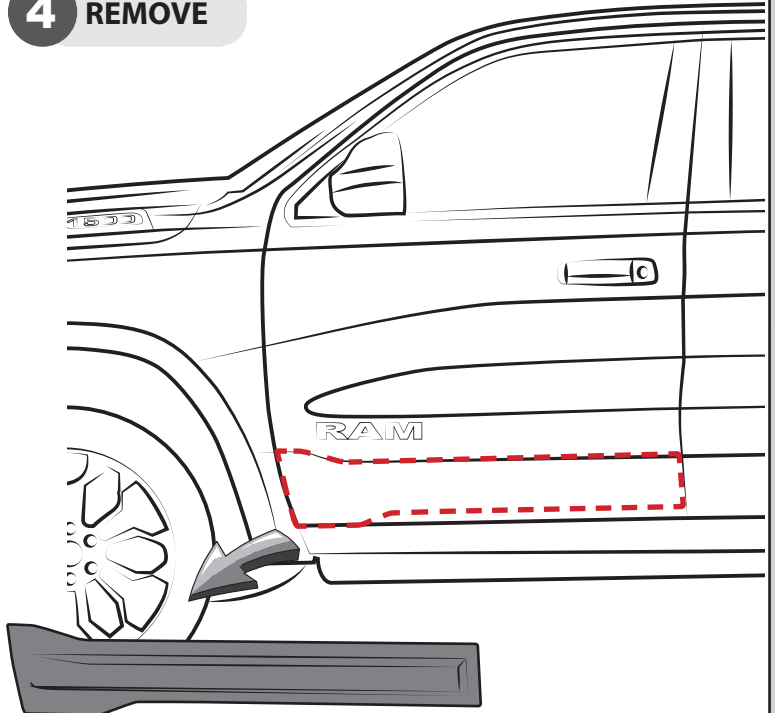


2 PRE-INSTALL

ALIGN AND CENTER

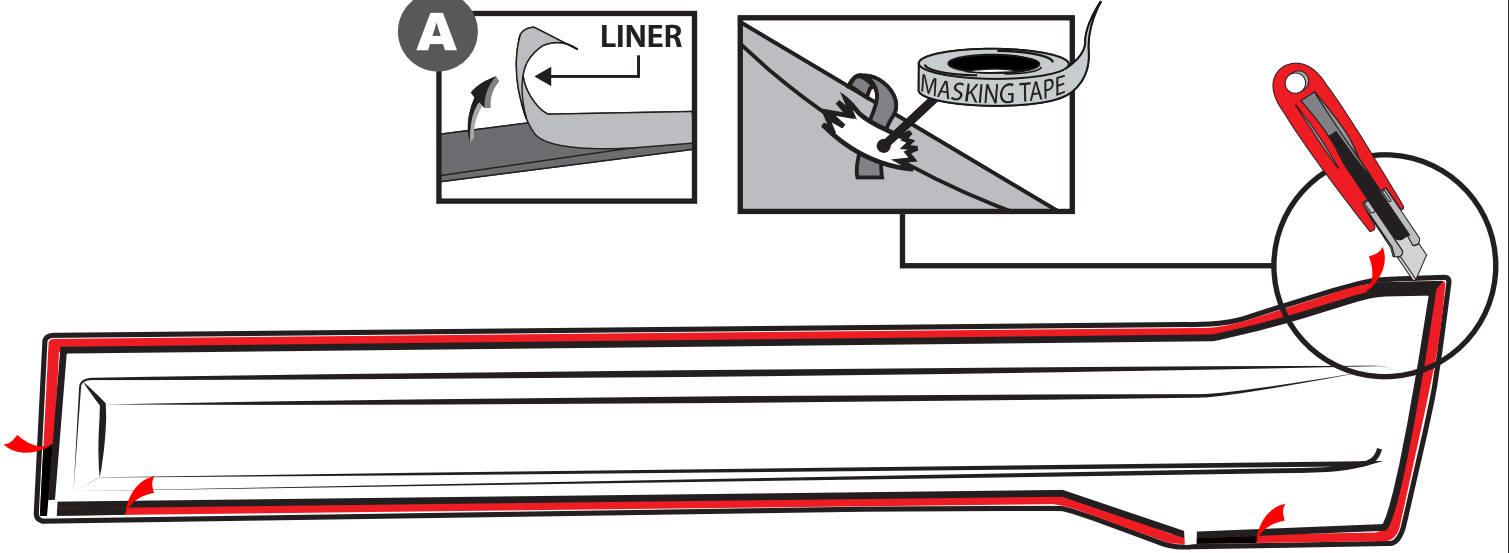
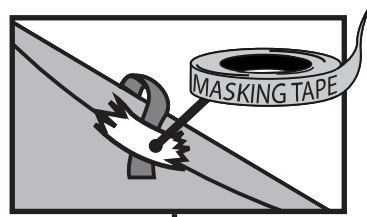
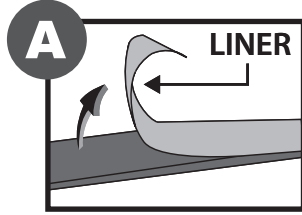


4 REMOVE

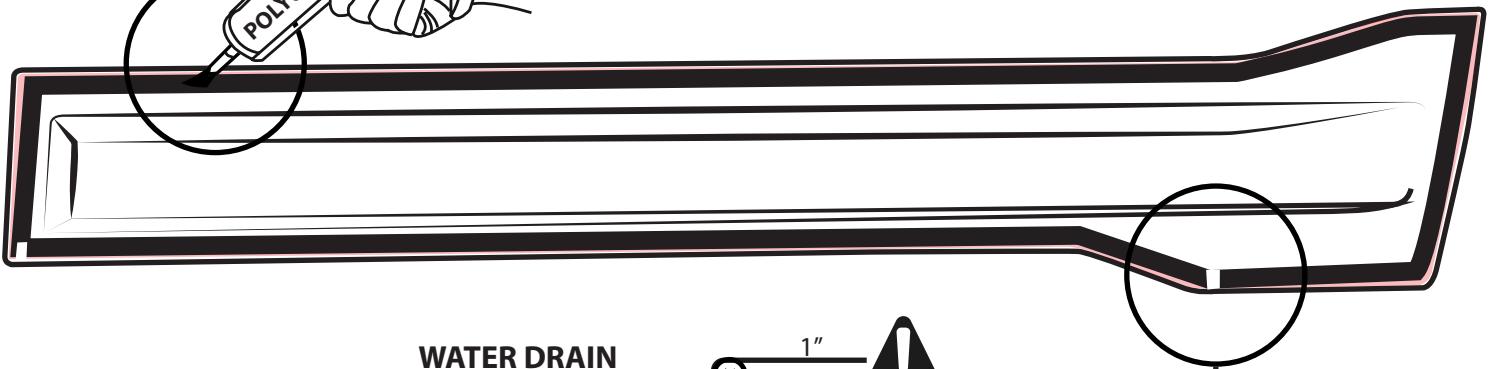
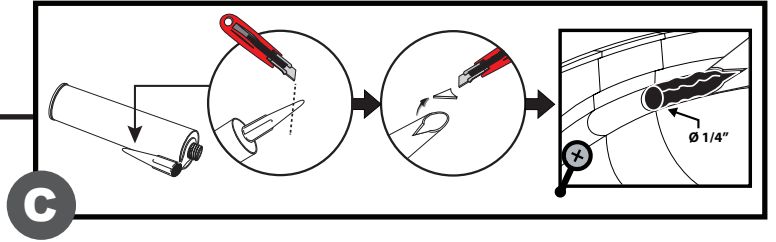
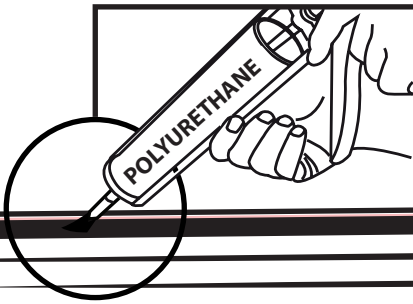


INSTALLATION MANUAL

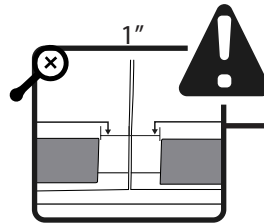
6 PEEL



7 APPLY POLYURETHANE ADHESIVE

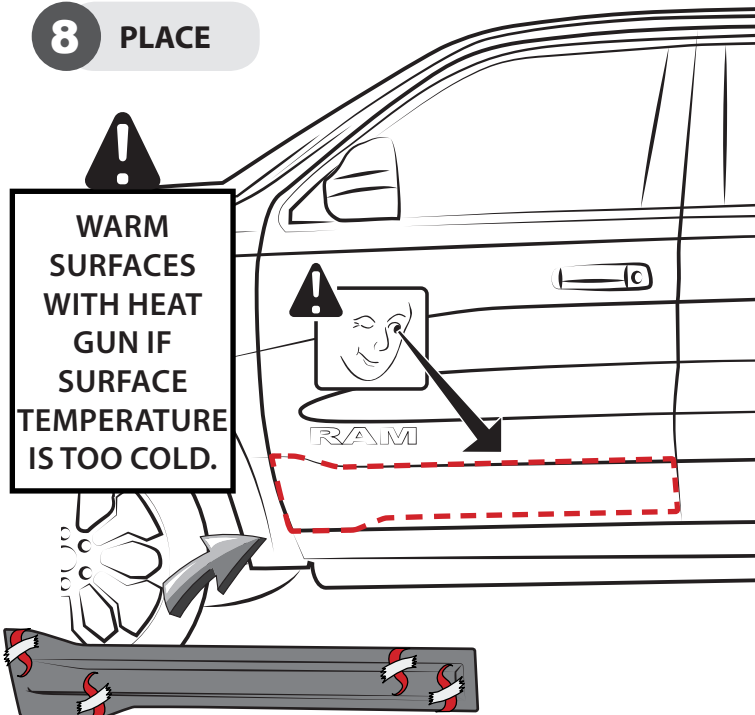


**WATER DRAIN
KEEP OPEN WITHOUT
ADHESIVE**
Keep the indicated
separation

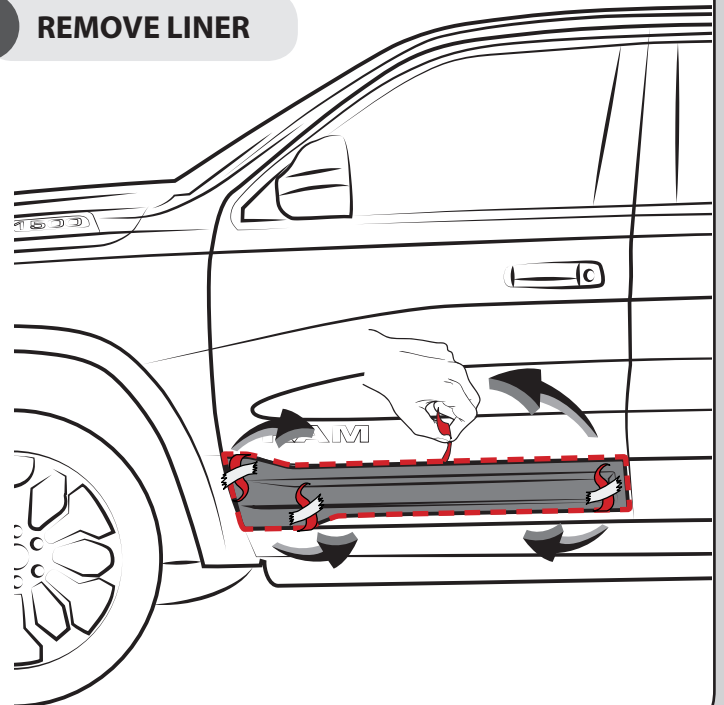


8 PLACE

**WARM
SURFACES
WITH HEAT
GUN IF
SURFACE
TEMPERATURE
IS TOO COLD.**

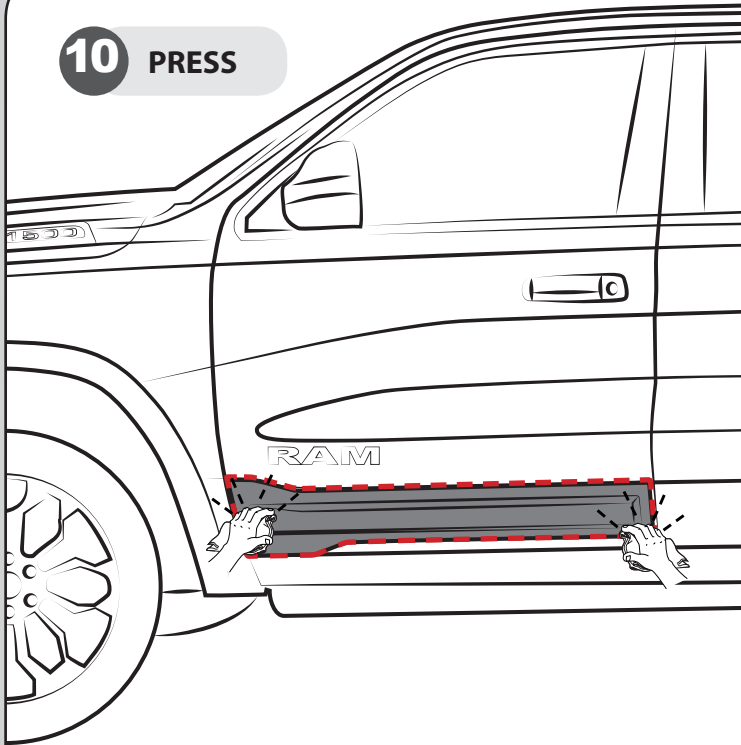


9 REMOVE LINER



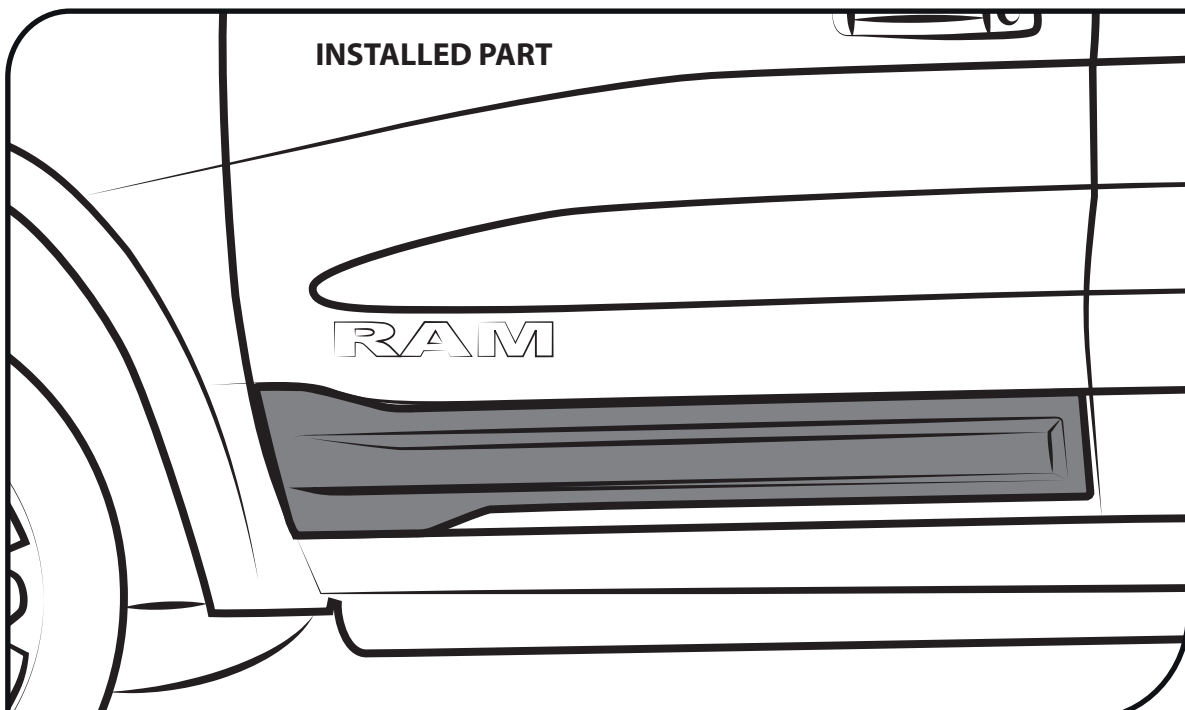
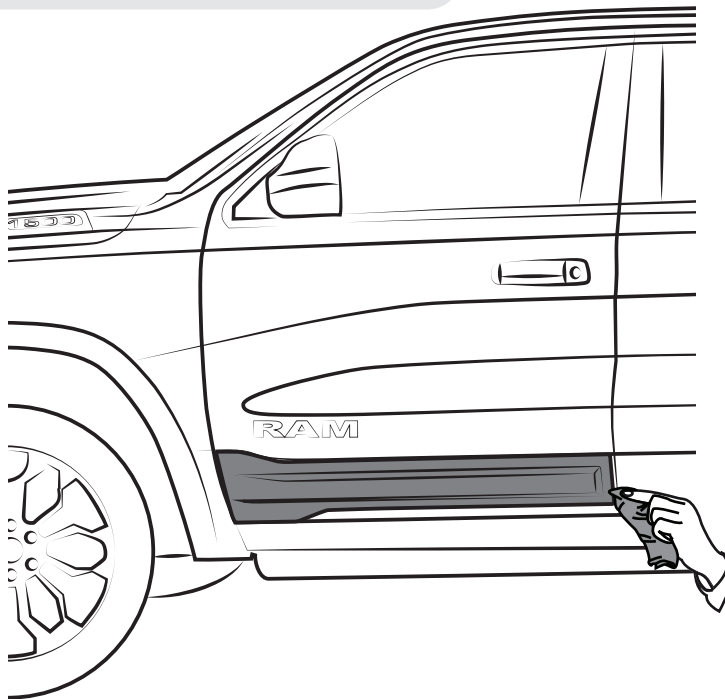
INSTALLATION MANUAL

10 PRESS



DURING APPLICATION, THE VEHICLE, ADD ON PARTS AND TAPE MUST BE AT OR ABOVE 16 °C OR 60 °F. A FULL SURFACE CONTACT BETWEEN TAPE AND SUBSTRATE IS IMPORTANT FOR GOOD ADHESION PERFORMANCE. CONTACT IS ACHIEVED BY APPLYING PRESSURE. IN PRACTICE A PRESSURE BETWEEN 40 AND 50 N/CM² IS USUALLY NEEDED.

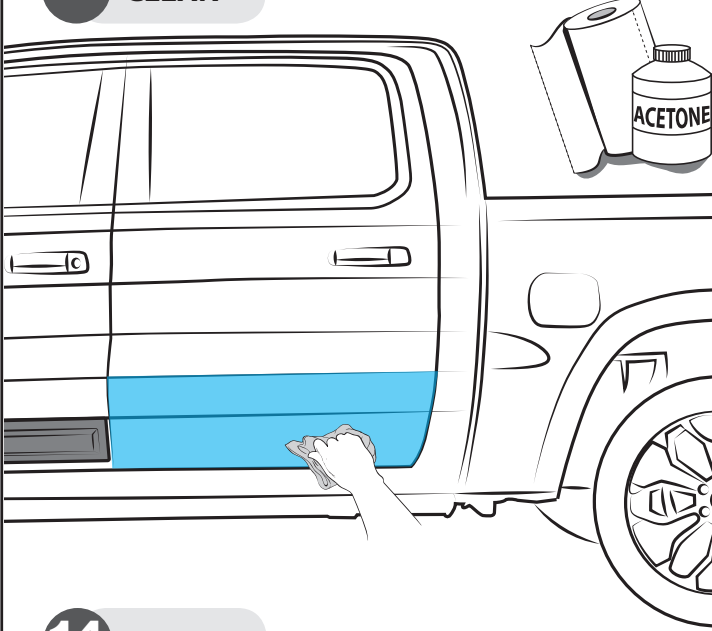
11 CLEAN OFF GREASE PENCIL MARK



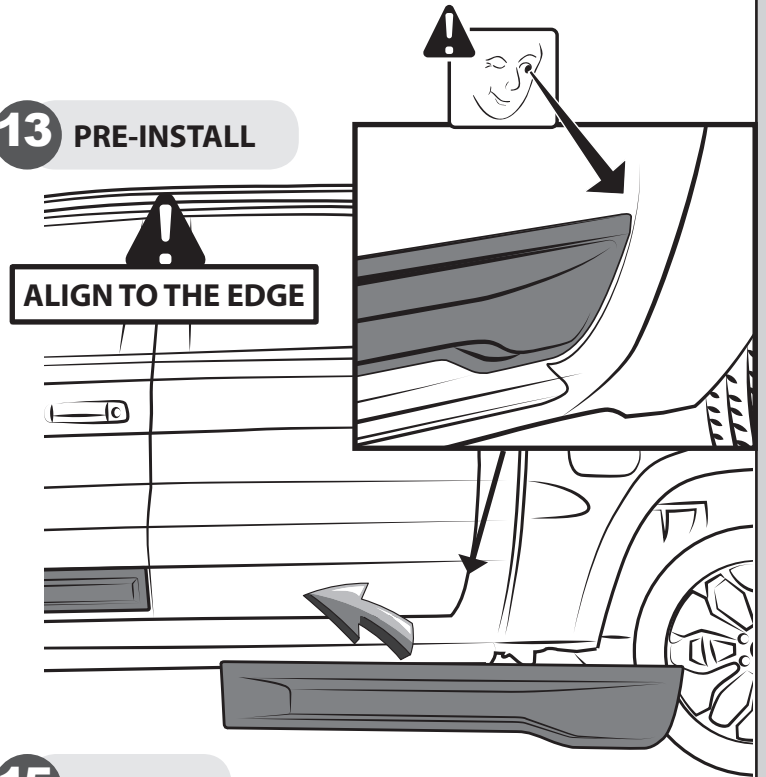
INSTALLATION MANUAL

REAR ROCKER PANEL

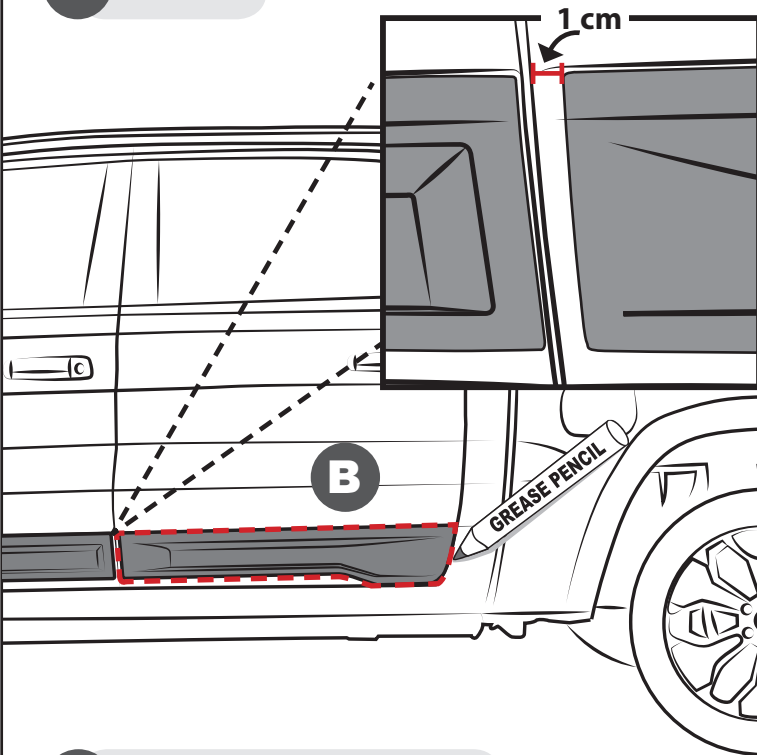
12 CLEAN



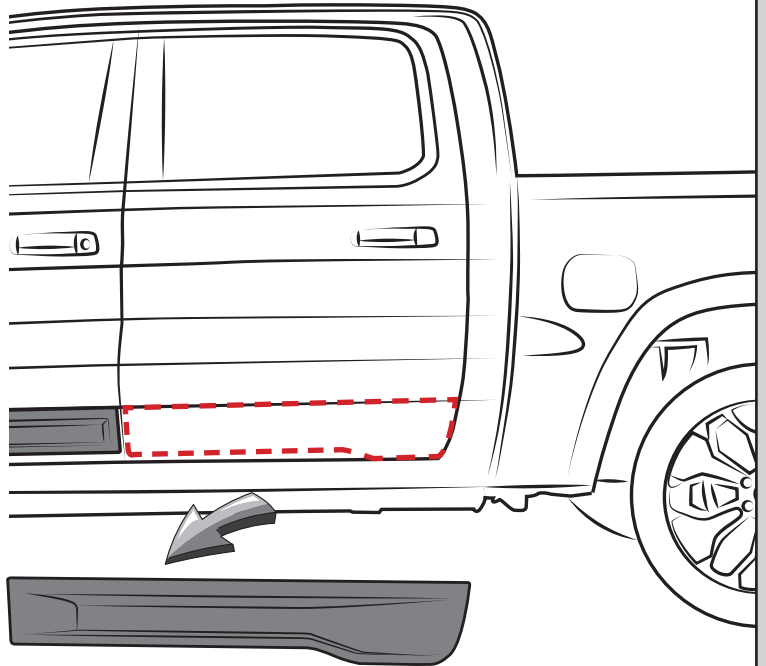
13 PRE-INSTALL



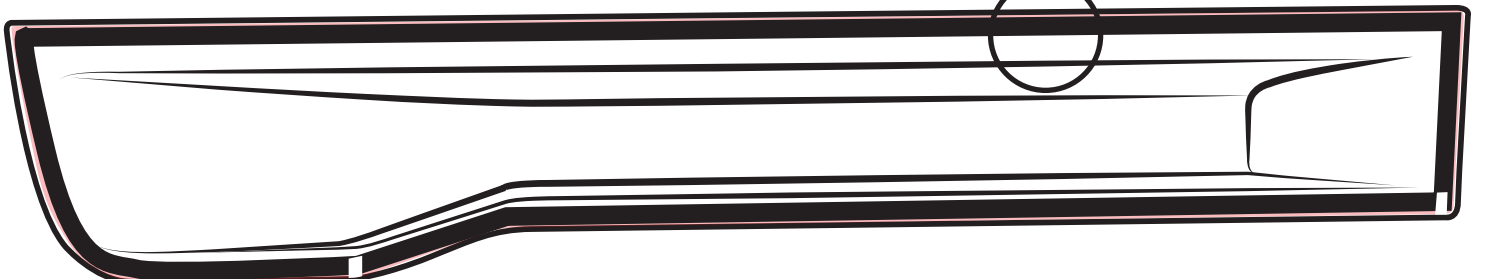
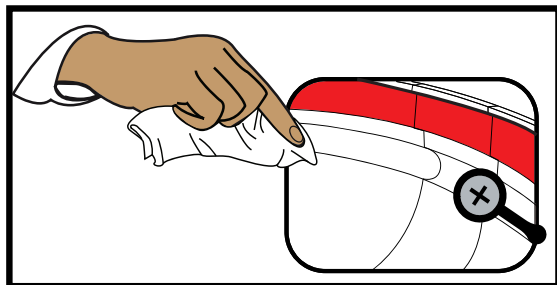
14 MARK



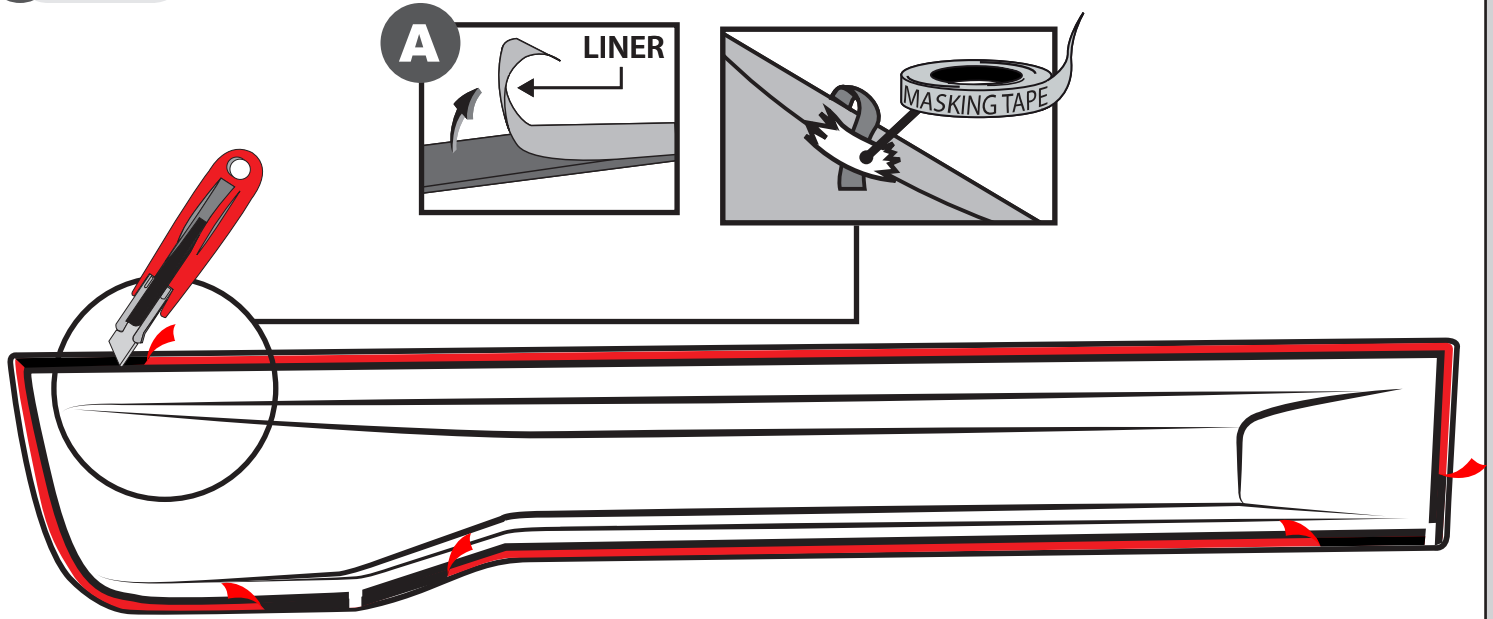
15 REMOVE



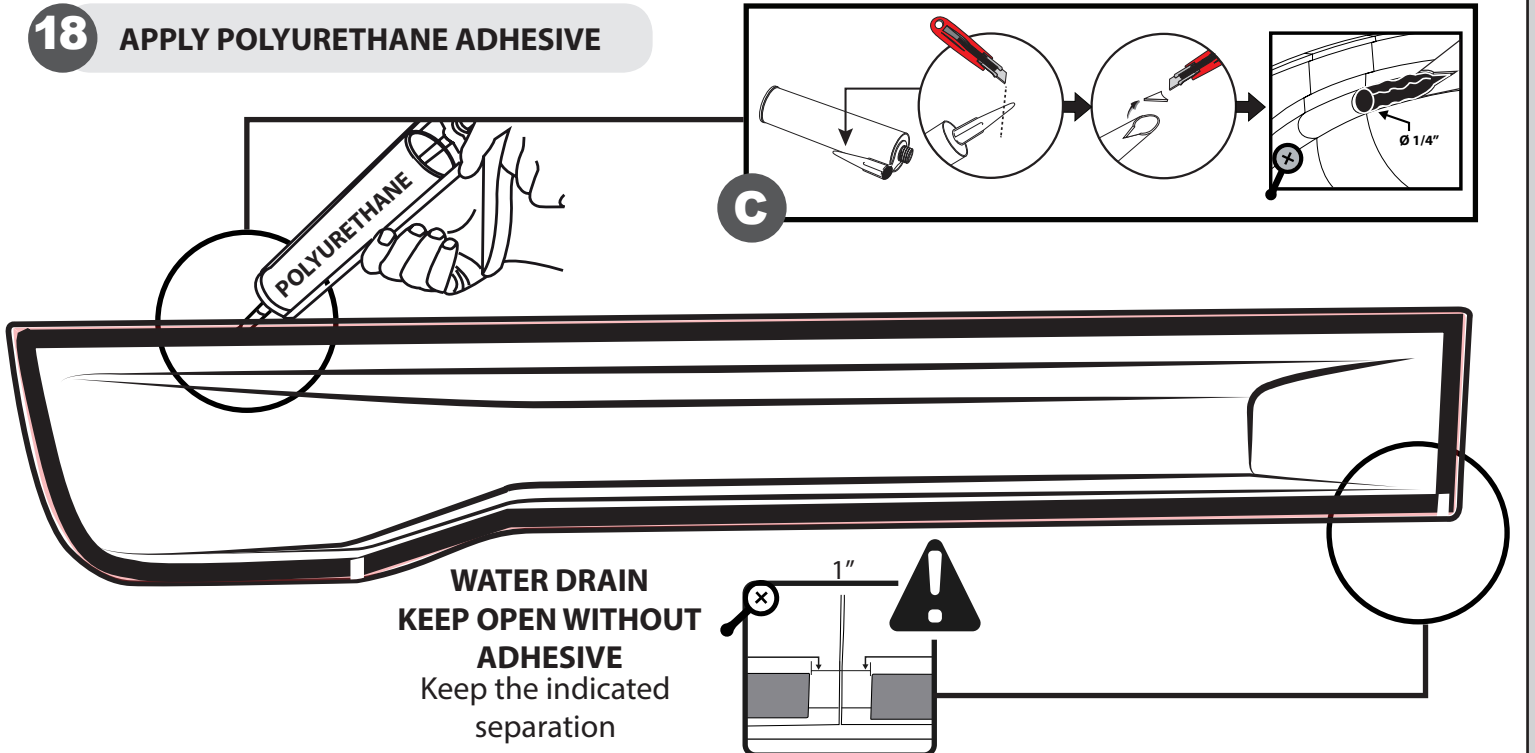
16 CLEAN INNER CHANNEL



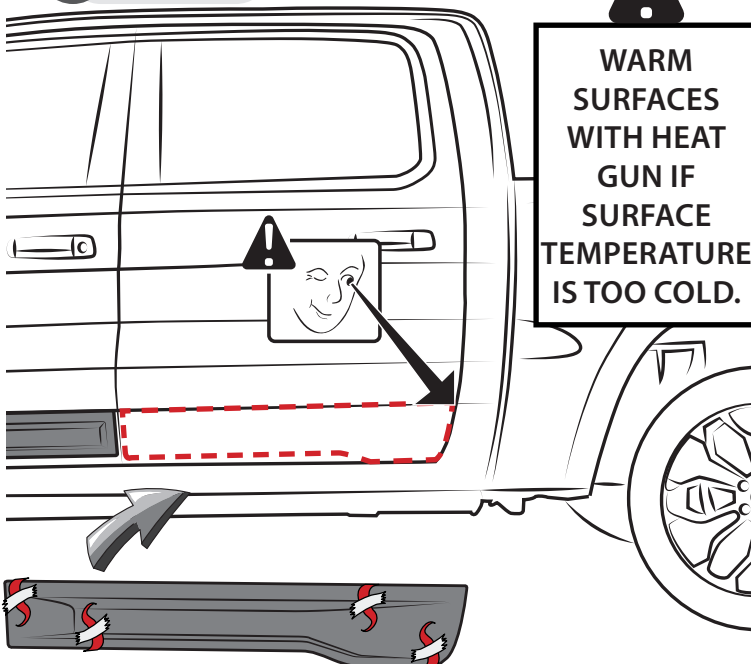
17 PEEL



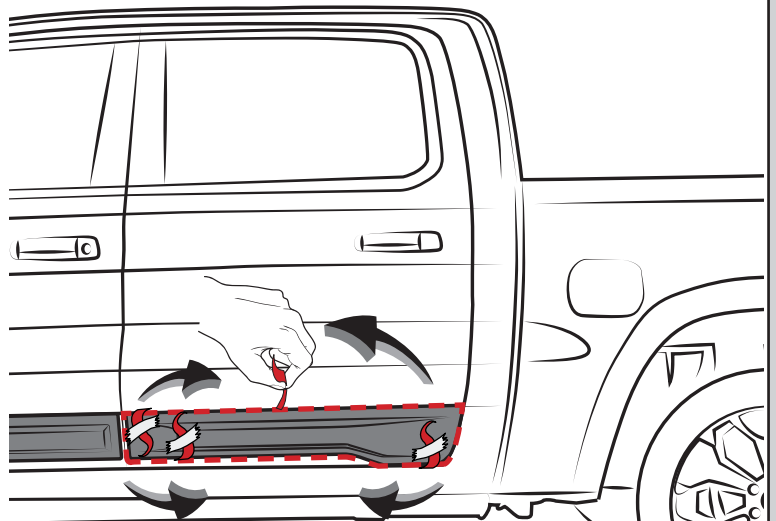
18 APPLY POLYURETHANE ADHESIVE



19 PLACE

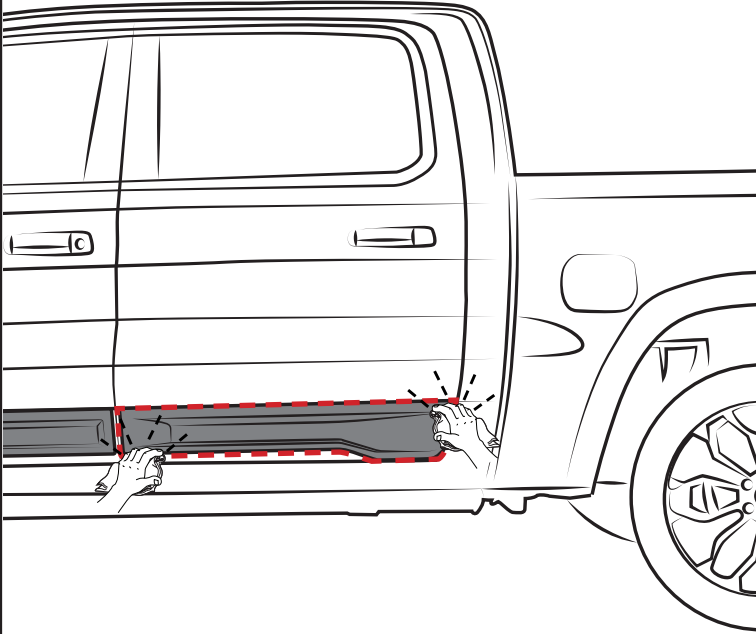


20 REMOVE LINER



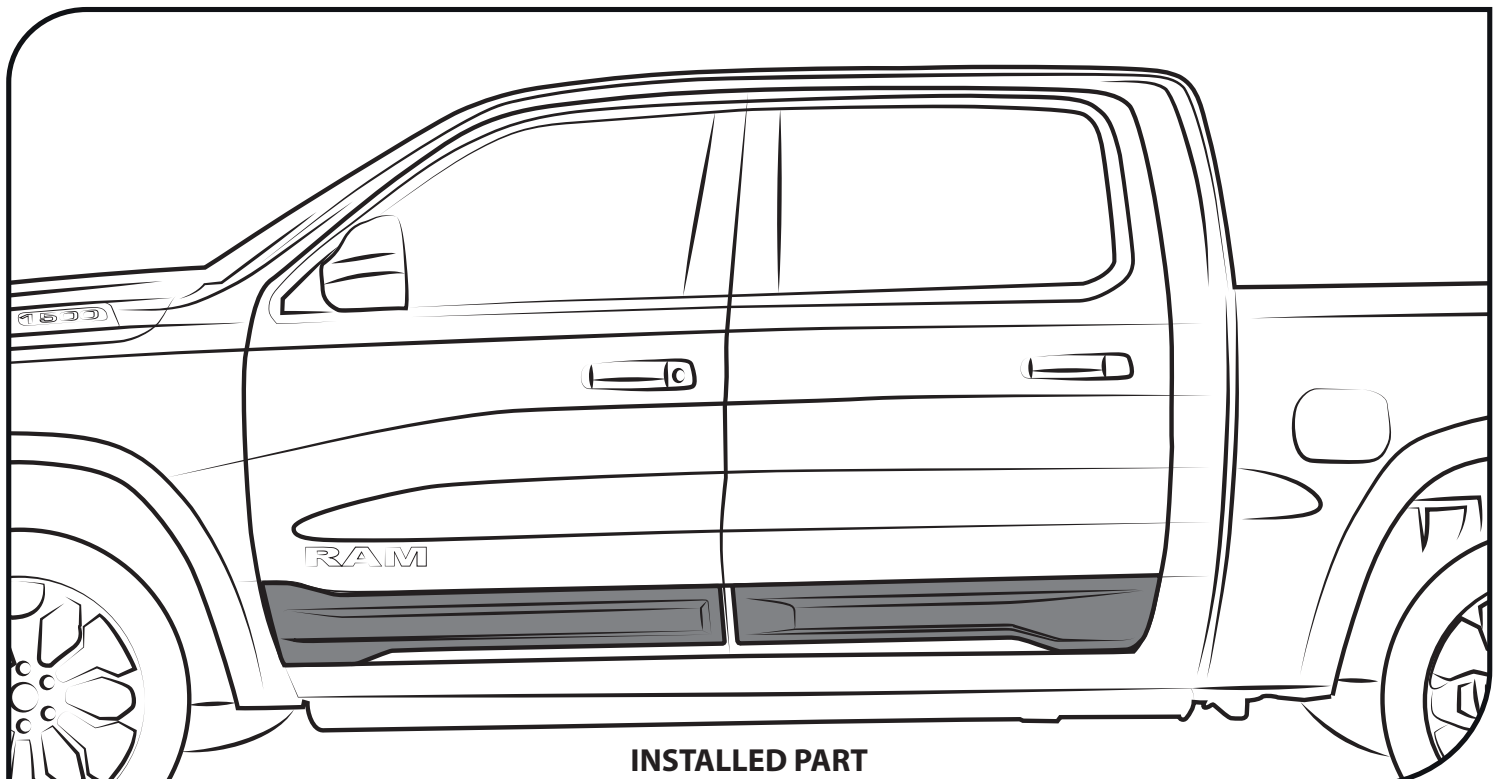
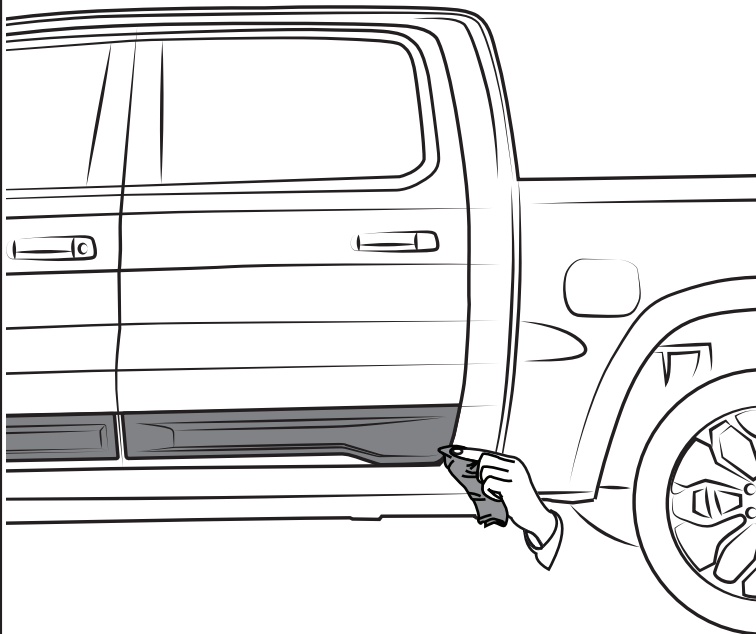
INSTALLATION MANUAL

21 PRESS



DURING APPLICATION, THE VEHICLE, ADD ON PARTS AND TAPE MUST BE AT OR ABOVE 16 °C OR 60 °F. A FULL SURFACE CONTACT BETWEEN TAPE AND SUBSTRATE IS IMPORTANT FOR GOOD ADHESION PERFORMANCE. CONTACT IS ACHIEVED BY APPLYING PRESSURE. IN PRACTICE A PRESSURE BETWEEN 40 AND 50 N/CM² IS USUALLY NEEDED.

22 CLEAN OFF GREASE PENCIL MARK



INSTALLED PART

INSTRUCTIONS PAINTING

IF THE PART IS IN FIRST, APPLY THE FOLLOWING PROCESS

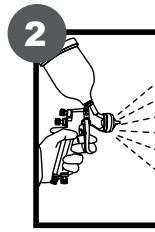


PLEASE READ CAREFULLY BEFORE STARTING WITH PAINTING PROCESS

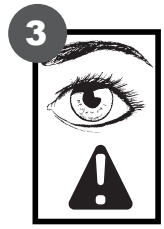
BODYCOLOR PAINTING INSTRUCTIONS



1 SAND THE PART SOFTLY WITH A 400 GRAINS SAND PAPER OR WITH A SCOTCH-BRITE RED SPONGE. BE CAREFUL NOT TO DAMAGE FACTORY SATIN BLACK FINISH. CLEAN WITH ISOPROPYL ALCOHOL AFTERWARDS.



2 APPLY A GOOD QUALITY 2K PRIMER.



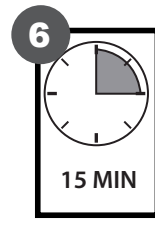
3 CHECK THE PARTS MINUTELY, THESE MUST HAVE A SMOOTH FINISH.



4 DUST ANY POWDER PARTICLE WITH A FLANNEL TOWEL BEFORE APPLYING THE PAINT.



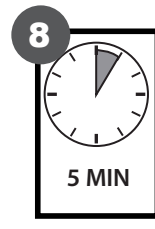
5 APPLY BASE COAT TO GET A SMOOTH AND FINE FINISH.
CLEAR



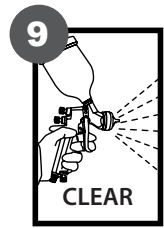
6 WAIT 15 MINUTES, CHECK MINUTELY AND DETAIL WHERE NECESSARY.
15 MIN



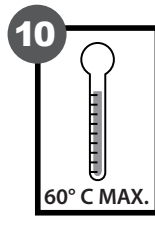
7 APPLY A THIN LAYER OF VARNISH.
CLEAR



8 WAIT 5 MORE MINUTES.
5 MIN



9 VARNISH PLENTY UNTIL YOU GET THE DESIRED BRIGHT AND FINISH. WAIT 5 MORE MINUTES.
CLEAR



10 CURE AT A MAXIMUM TEMPERATURE OF 60°C (140°F) FOR 15 MINUTES. DO NOT EXCEED SUGGESTED TEMPERATURE.
60° C MAX.



IMPORTANT

MAKE SURE THE PART IS SECURED CORRECTLY TO THE BASE DURING PAINT AND CURE PROCESS TO AVOID ANY RISK OF FALLING.