



### **STAINLESS STEEL FLOATING SHELVES:**

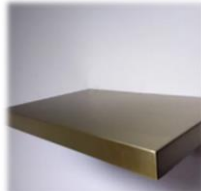
MATERIAL: STAINLESS STEEL AISI 304 GRADE, SEAMLESS, BRUSHED FINISH. LENGTH: 12 - 110 INCHES, WIDTH: 4-20 INCHES, THICK: 1.5-5 INCHES



[NATURAL](#)



[MATTE BLACK](#)



[BRASS](#)

FRAME TO FACE CONSTRUCTION WITH SCREW-BOLTS. HARDWARE FOR INSTALL ON STONE WALLS (SCREWS, ANCHORS) IS INCLUDED. LOAD CAPACITY: 2.5LBS/INCH OF LENGTH. MAX.LOAD CAPACITY: 5.0LBS/INCH OF LENGTH.

[HOW TO INSTALL SHELVES PONOMA.](#)

**CUSTOMIZATION IS AVAILABLE!**



### **STAINLESS STEEL COUNTERTOPS WITH INTEGRATED SINK:**

MATERIAL: STAINLESS STEEL AISI 304 GRADE, SEAMLESS, BRUSHED FINISH.

LENGTH: 48 INCHES, WIDTH: 25 INCHES, THICK: 2 INCHES +2 INCHES OF BACKSPLASH



RIGHT



LEFT



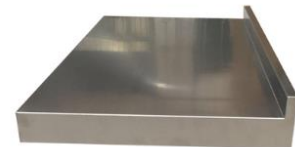
2 BOWL SINK TOP 66,72INCHES

### **STAINLESS STEEL COUNTERTOPS WITH BACKSPLASH:**

MATERIAL: STAINLESS STEEL AISI 304 GRADE, SEAMLESS, BRUSHED FINISH.

LENGTH: 30/36/48/60/72/84/96/120 INCHES, WIDTH: 25 INCHES,

THICK: 1.5/2.0/3.0 INCHES + 1.5/2.0/3.0 INCHES OF BACKSPLASH



### **ISLAND STAINLESS STEEL COUNTERTOPS:**

MATERIAL: STAINLESS STEEL AISI 304 GRADE, SEAMLESS, BRUSHED FINISH.

LENGTH: 36/48/60/72/84 INCHES, WIDTH: 18/26/36/48 INCHES, THICK: 1.5/2.0/3.0 INCHES

[HOW TO INSTALL COUNTERTOPS PONOMA](#)

**CUSTOMIZATION IS AVAILABLE!**

